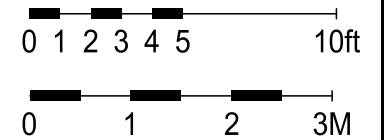
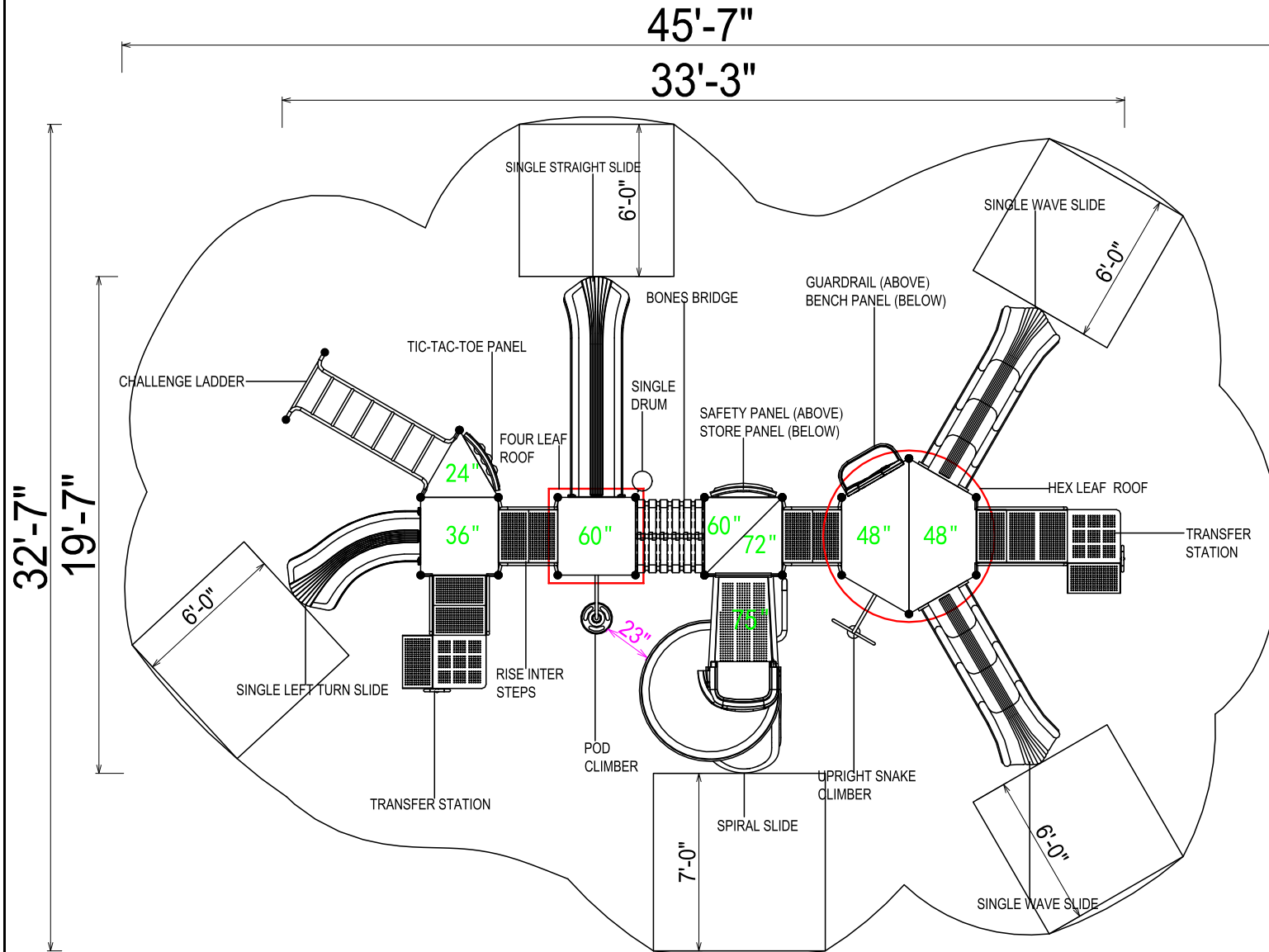


Compliance:
 This play structure has been designed to meet the safety requirements established in:
 - 2010 ADA Standard
 - ASTM F1487
 - CPSC Pub #325
 when the play structure is installed over a properly maintained surfacing material which is in compliance with:
 - ASTM F1292
 - ASTM F1951
 and is appropriate for the highest designated play surface of the structure.



Shaker Meadows

Drawing No: KP-22019 Layout 2
 Date: 18-11-2025
 Scale: To Fit



Structure Size: 33'-3" x 19'-7" x 14'-6"
 Recommended Use Zone: 45'-7" x 32'-7"
 Surface Area: 1518 Sq Ft

HDPS: 7'
 Age Group: 5-12
 Capacity: 42-46
 Weight: 3520 lbs

Kinetic Recreation