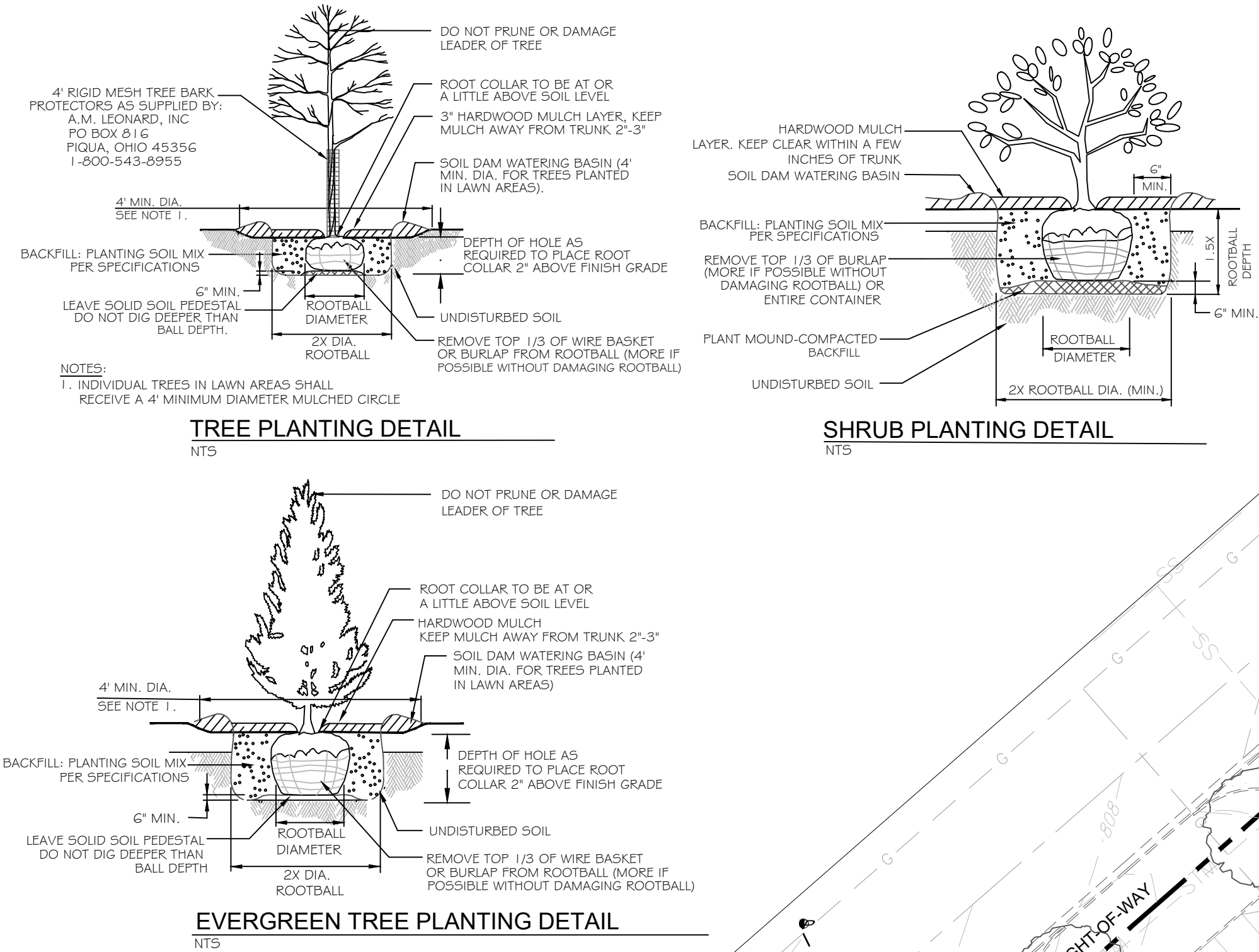


PLANT INSTALLATION DETAILS



LANDSCAPE CODE DATA

REQUIRED BUFFER YARDS: For Class IV: Industrial
 STREET FRONTAGE 675.6 LF (minus drives) = 620.6 LF
 TYPE 'A' 15' WIDE BUFFER YARD REQUIRED
 PROPOSED 2 DECIDUOUS TREES PER 100 LF 620.6/100 = 6.2 x 2 = 12.4 or 13 TREES REQUIRED
 20+ WIDE BUFFER YARD AS 3 EXISTING DECIDUOUS TREES
 10 PROPOSED DECIDUOUS TREES
 13 TREES AS SHOWN

2 EVERGREEN TREES PER 100 LF 620.6/100 = 6.2 x 2 = 12.4 or 13 EVERGREEN TREES REQUIRED
 1 EXISTING EVERGREEN TREE
 12 PROPOSED EVERGREEN TREES
 13 EVERGREEN TREES AS PROPOSED
 NOT APPLICABLE - SHARED PROPERTIES

EAST/NORTHEAST PROPERTY LINE
 INTERIOR PARKING AREAS (IPA) FOR PARKING LOTS:
 CONTAINING MORE THAN 16,000 SQUARE FEET OF AREA SHALL HAVE LANDSCAPED AREAS EQUAL TO FIVE PERCENT (5%) OF PARKING AREA. MINIMUM ISLAND OR PENINSULA SIZE SHALL BE TWO HUNDRED SQUARE FEET (200 SQ. FT.)
 ONE (1) DECIDUOUS TREE SHALL BE REQUIRED FOR EVERY TEN (10) PARKING SPACES.
 22,753 SF AS PROPOSED @ 5% = 1,137.65 SF REQUIRED 1,697 SF AS PROPOSED
 17 PARKING SPACES / 10 = 1.7 OR 2 TREES REQUIRED 2 TREES AS PROPOSED

LOT INTERIOR:
 THREE (3) DECIDUOUS TREES SHALL BE REQUIRED FOR EACH ONE HUNDRED LINEAR FEET (100') OF BUILDING PERIMETER.
 SUCH TREES MAY BE PLACED CLOSE TO THE BUILDING OR MAY BE USED TO ADD TO REQUIRED PARKING AREA LANDSCAPING.
 483.88 LF / 100 = 4.84 x 3 = 14.52 OR 15 TREES REQUIRED 8 TREES AS PROPOSED

BUILDING FOUNDATION PLANTINGS:
 TEN (10) SHRUBS SHALL BE REQUIRED FOR EVERY ONE HUNDRED LINEAR FEET (100') OF BUILDING PERIMETER
 483.88 LF / 100 = 4.84 x 10 = 48.4 OR 49 SHRUBS REQUIRED 49 SHRUBS AS PROPOSED

DUMPSTER SCREENING: NATURAL VEGETATION SHALL HAVE A MINIMUM OPAQUENESS OF SEVENTY-FIVE PERCENT (75%) AT ALL TIMES.
 NATURAL VEGETATION SHALL BE A VARIETY WHICH WILL ATTAIN SIX FEET (6') IN HEIGHT WITHIN FIVE (5) YEARS OF PLANTING.
 MEETS REQUIREMENT AS PROPOSED

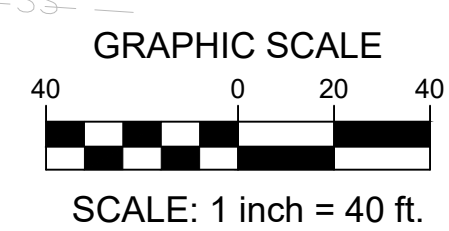
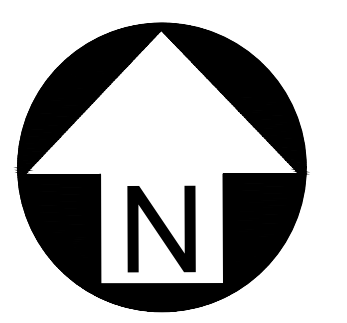
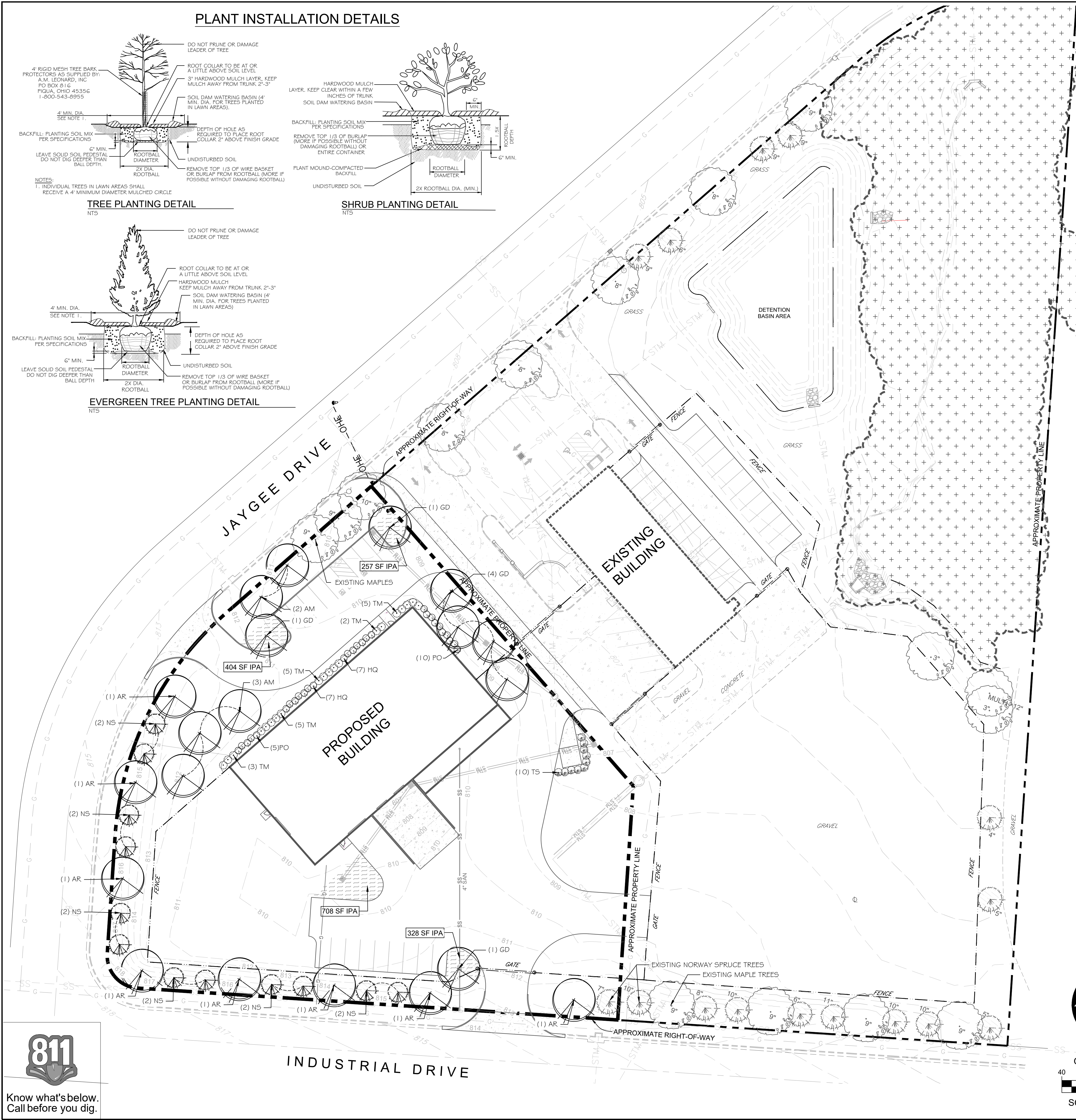
PLANT MATERIALS LIST

KEY	QTY	DECIDUOUS TREES	MIN. INSTALLED SIZE	MATURE HT / SPRD.
AR	8	RED MAPLE - <i>Acer rubrum</i> "October Glory"	2-1/2" cal. B/B 5' Clear Trunk	45/ 35'
AM	5	SUGAR MAPLE - <i>Acer saccharum</i> "Flax Mill"	2-1/2" cal. B/B 5' Clear Trunk	60/ 45'
GD	7	KENTUCKY COFFEE TREE - <i>Gymnocladus dioica</i> "Espresso-JFS" (Seedless)	2-1/2" cal. B/B 5' Clear Trunk	50/ 35'
EVERGREEN TREES				
NS	12	NORWAY SPRUCE - <i>Picea abies</i>	6' ht. B/B	55/ 30'
SHRUBS				
HQ	14	RUBY SLIPPERS HYDRANGEA - <i>Hydrangea quercifolia</i> "Ruby Slippers"	# 3 cont.	4/ 5'
PO	15	SUMMER WINE NINEBARK - <i>Physocarpus opulifolius</i> "Seward"	# 3 cont.	5/ 5'
TM	20	DENSE YEW - <i>Taxus media densiformis</i>	24" B/B	3/ 5'
TS	10	EMERALD GREEN ARBORVITAE - <i>Thuja occidentalis</i> "Smaragd"	5' ht. B/B or cont.	15/ 4'

* DENOTES OHIO NATIVE PLANT

GENERAL LANDSCAPE REQUIREMENTS

1. DIAMETERS OF PLANT MATERIALS AS DRAWN ARE REPRESENTATIVE OF PLANTS AT OR NEAR MATURITY RATHER THAN AT INITIAL PLANTING.
2. THE PLANT LIST IS INTENDED AS A GUIDE FOR THE LANDSCAPE CONTRACTOR. IN THE EVENT OF DISCREPANCY BETWEEN THE NUMBER OF PLANTS ON THE PLANT LIST AND ON THE DRAWING, THE GREATER NUMBER SHALL APPLY.
3. ADJUSTMENTS IN LOCATIONS OF PLANT MATERIALS MAY BE NECESSARY DUE TO NEW OR EXISTING UTILITIES OR SITE OBSTRUCTIONS. ADVISE ARCHITECT'S REPRESENTATIVE BEFORE ADJUSTMENTS ARE MADE.
4. TREES AND SHRUBS SHALL BE NURSERY GROWN UNLESS OTHERWISE APPROVED AND BE HEALTHY AND VIGOROUS PLANTS, FREE FROM DEFECTS, DECAY, DISFIGURING ROOTS.
5. SUN SCALD, INJURIES, ABRASIONS OF THE BARK, PLANT DISEASES, INSECT PEST EGGS, BORERS AND ALL FORMS OF INFESTATIONS OF OBJECTIONABLE DISFIGUREMENTS. PLANTS SHALL BE IN ACCORDANCE WITH THE CURRENT AMERICAN ASSOCIATION OF NURSERYMEN'S STANDARDS AND CONFORM IN GENERAL TO REPRESENTATIVE SPECIES.
6. BALLED AND BURLAPPED OR CONTAINER TREES AND SHRUBS SHOULD BE DUG WITH FIRM, NATURAL BALLS OF EARTH OF ADEQUATE SIZE AS SPECIFIED BY THE AMERICAN ASSOCIATION OF NURSERYMEN, "AMERICAN STANDARD FOR NURSERY STOCK" WITH THE BALLS SECURELY WRAPPED.
7. ALL SHRUBS OCCURRING IN CONTINUOUS ROW OR FORMAL ARRANGEMENT SHALL BE OF UNIFORM HEIGHT, SPREAD AND HABIT OF GROWTH.
8. A MINIMUM OF 4" DEPTH OF TOPSOIL SHALL BE PLACED IN ALL BED AREAS BY LANDSCAPE CONTRACTOR PRIOR TO PLANT INSTALLATION. BACKFILL ALL SHRUBS AND TREES WITH BACKFILL MIX OF ONE PART PEAT TO THREE PARTS TOPSOIL.
9. MULCH TREES AND SHRUBS WITH MIN. 3" DEPTH. MULCH SHALL EXTEND IN A CONTINUOUS LAYER WITHIN PLANTING BEDS FROM FACE TO FACE OF SITE STRUCTURES - WALKS, BUILDING OR OTHER PLANT BED LIMITS. KEEP MULCH MIN. 1/2" BELOW TOP OF CURB & ADJACENT PAVED SURFACES.
10. SEED ALL DISTURBED LAWN AREAS WITHIN PROJECT LIMITS. REFER TO CIVIL DRAWINGS FOR REQUIREMENTS AND EXTENT OF WORK AND VERIFY EXTENT WITH ARCHITECT'S REPRESENTATIVE.
11. THE LANDSCAPE CONTRACTOR SHALL MAINTAIN ALL PLANTS AND BEDS FOR A MIN. OF 30 DAYS AFTER ACCEPTANCE OF THE WORK BY THE ARCHITECT'S REPRESENTATIVE. THIS INCLUDES REGULAR WATERING, WEEDING AND MOWING.
12. THE LANDSCAPE CONTRACTOR SHALL GUARANTEE ALL PLANT MATERIALS FOR ONE-YEAR FROM DATE AT END OF MAINTENANCE PERIOD. BEFORE END OF WARRANTY PERIOD CONTRACTOR SHALL REPLACE ALL TREES, SHRUBS OR PLANTINGS NOT ALIVE OR IN A HEALTHY GROWING CONDITION.



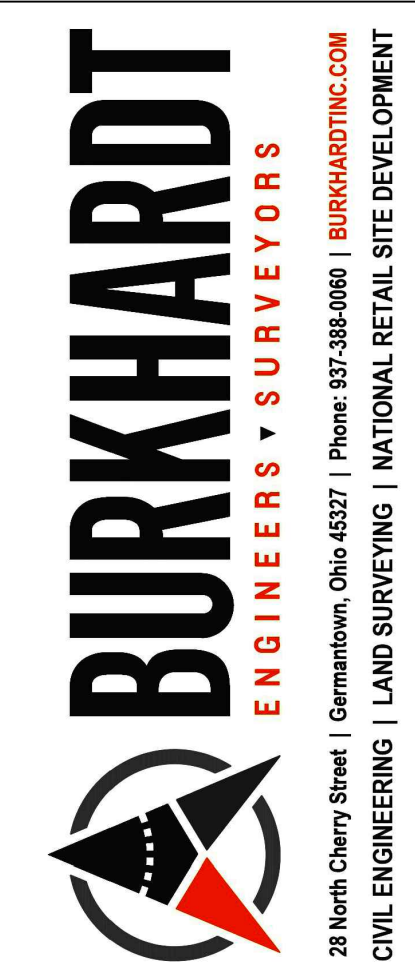
Know what's below.
Call before you dig.

LANDSCAPE ARCHITECT:
YELLOW SPRINGS DESIGN
 PO Box 472 205 PARK MEADOWS DR.
 YELLOW SPRINGS, OHIO 45397
 (O) 937.767.8199 (M) 937.654.8199
 yellowspringsdesign@bizwoh.com
 LICENSED IN: OH, KY, PA, VA, IN, IL,
 MI, MO, TX, OK, KS, IA, NM, AZ, CO & UT



Date	Description
05.21.2026	Resubmittal for Major Site Plan Application

SITE DEVELOPMENT PLANS FOR:
AMERICAN ROOFING
EXPANSION
 250 INDUSTRIAL DRIVE
 FRANKLIN, WARREN COUNTY, OHIO

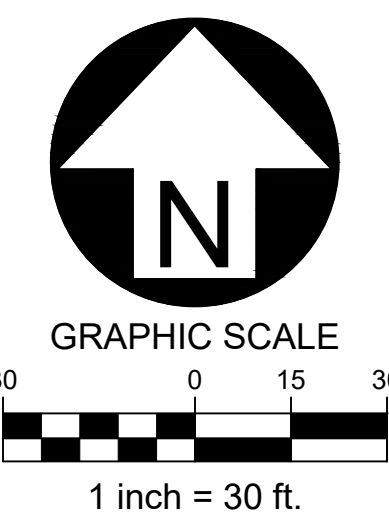


Design: REB	Proj: 26120
Draw: REB	Dwg:
Check: REB	Tab: L-1.0
Scale: 1"=40'	
Date:	05.01.2026
Sheet:	SITE LANDSCAPE PLAN
Sheet No.:	L-1.0

w:\civil_3d\projects\expansion\CAD\Civil\Sheets\26120_UTILITY_PLAN.dwg 5/21/2026 11:43 AM Steve Fox



Know what's below.
Call before you dig.



UTILITY KEYNOTES

- 01 REMOVE EXISTING CATCH BASIN TOP
- REPLACE TOP OF STRUCTURE WITH MANHOLE TOP & LID
- ADJUST RIM TO ELEVATION SHOWN ON SHEET C-3.0
- 02 REMOVE EXISTING HEADWALL
- REPLACE STRUCTURE WITH MANHOLE TOP & LID
- 03 REMOVE PIPE
- REPLACE WITH NEW PIPE AT THE EXISTING INVERT
- 04 WYE CONNECTION INTO EXISTING SANITARY PIPE
- CONTRACTOR TO VERIFY EXISTING PIPE ELEVATION AT CONNECTION LOCATION
- 05 PROP. POND OUTLET STRUCTURE
- SEE DETAIL ON SHEET C-7.0 FOR OUTLET STRUCTURE INFORMATION
- 06 EX. FIRE HYDRANT

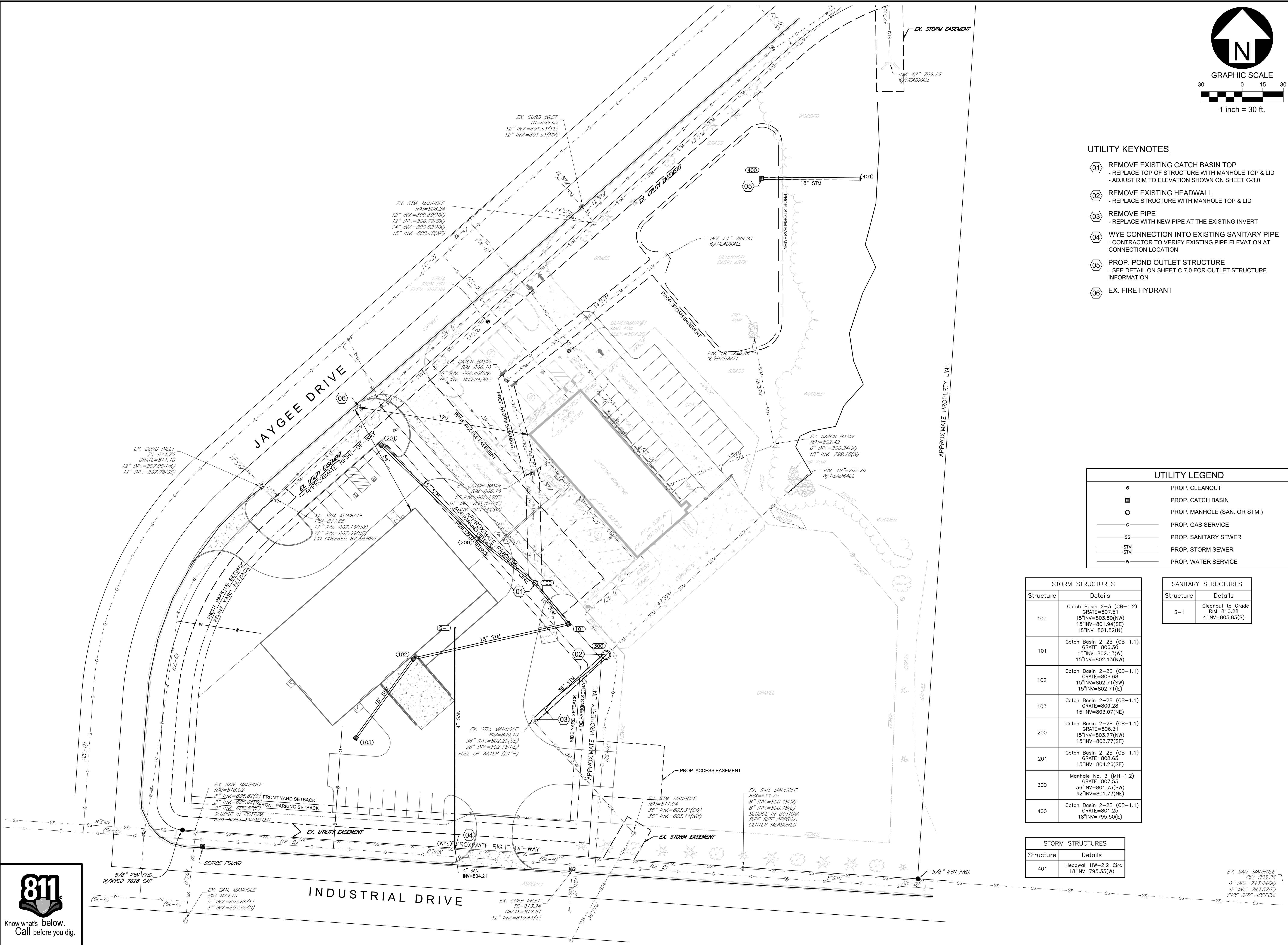
UTILITY LEGEND

●	PROP. CLEANOUT
■	PROP. CATCH BASIN
○	PROP. MANHOLE (SAN. OR STM.)
—G—	PROP. GAS SERVICE
—SS—	PROP. SANITARY SEWER
—STM—	PROP. STORM SEWER
—W—	PROP. WATER SERVICE

STORM STRUCTURES	
Structure	Details
100	Catch Basin 2-3 (CB-1.2) GRATE=807.51 15" INV.=803.50(NW) 15" INV.=801.94(SE) 18" INV.=801.82(N)
101	Catch Basin 2-2B (CB-1.1) GRATE=806.30 15" INV.=802.13(W) 15" INV.=802.13(NW)
102	Catch Basin 2-2B (CB-1.1) GRATE=806.68 15" INV.=802.71(SW) 15" INV.=802.71(E)
103	Catch Basin 2-2B (CB-1.1) GRATE=809.28 15" INV.=803.07(NE)
200	Catch Basin 2-2B (CB-1.1) GRATE=806.31 15" INV.=803.77(NW) 15" INV.=803.77(SE)
201	Catch Basin 2-2B (CB-1.1) GRATE=804.63 15" INV.=804.26(SE)
300	Manhole No. 3 (MH-1.2) GRATE=807.53 36" INV.=801.73(SW) 42" INV.=801.73(NE)
400	Catch Basin 2-2B (CB-1.1) GRATE=801.25 18" INV.=795.50(E)

SANITARY STRUCTURES	
Structure	Details
S-1	Cleanout to Grade RIM=810.28 4" INV.=805.83(S)

STORM STRUCTURES	
Structure	Details
401	Headwall HW-2.2_Circ 18" INV.=795.33(W)

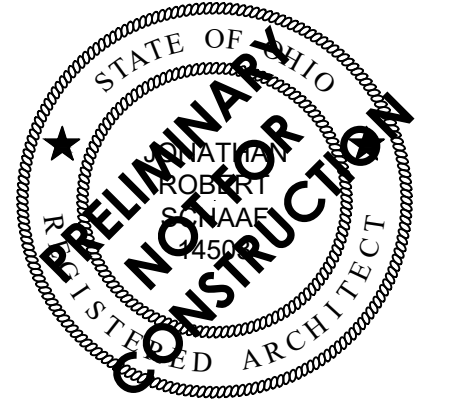


SITE DEVELOPMENT PLANS FOR:
**AMERICAN ROOFING
EXPANSION**
250 INDUSTRIAL DRIVE
FRANKLIN, WARREN COUNTY, OHIO



Design:	MES	Proj:	26120
Draw:	MES	Dwg:	
Check:	SRF	Tab:	
Scale:	SEE SHEET		
Date:	04.30.2026		
Sheet:	UTILITY PLAN		
Sheet No.:	C-4.0		





Jonathan Robert Schaaf #14503
Expiration Date 12/31/2027

This drawing is the architect's instrument of service for use solely with respect to this project. RDA Group Architects is the author of this document and shall retain all copyrights and other reserved rights, unless otherwise agreed upon in writing.
© RDA 2025

RDA GROUP ARCHITECTS
7662 PARAGON ROAD | DAYTON, OH 45459 | 937.610.3440



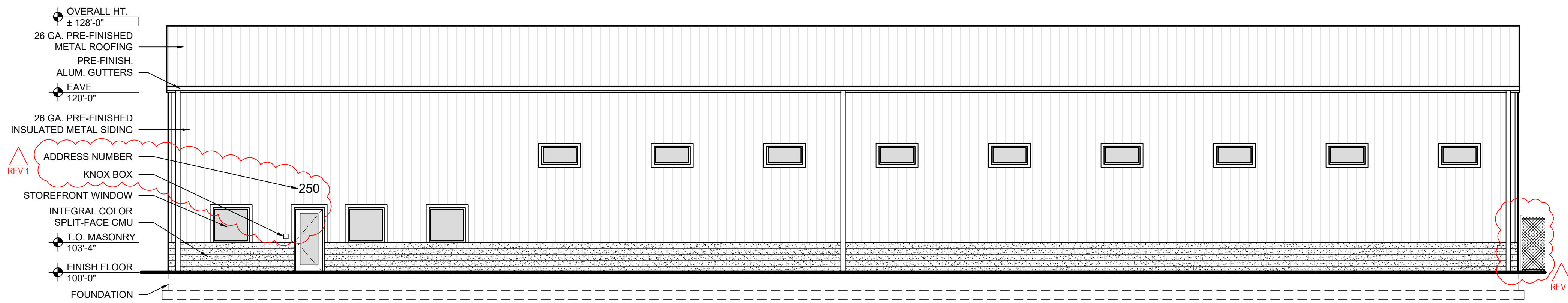
New Fabrication Building For:
American Roofing
250 Industrial Drive
Franklin, OH 45005

Project Number	2025-071
Date	May 21, 2026
Date	Issue
05.01.26	Planning Submittal
05.21.26	Planning REV 1

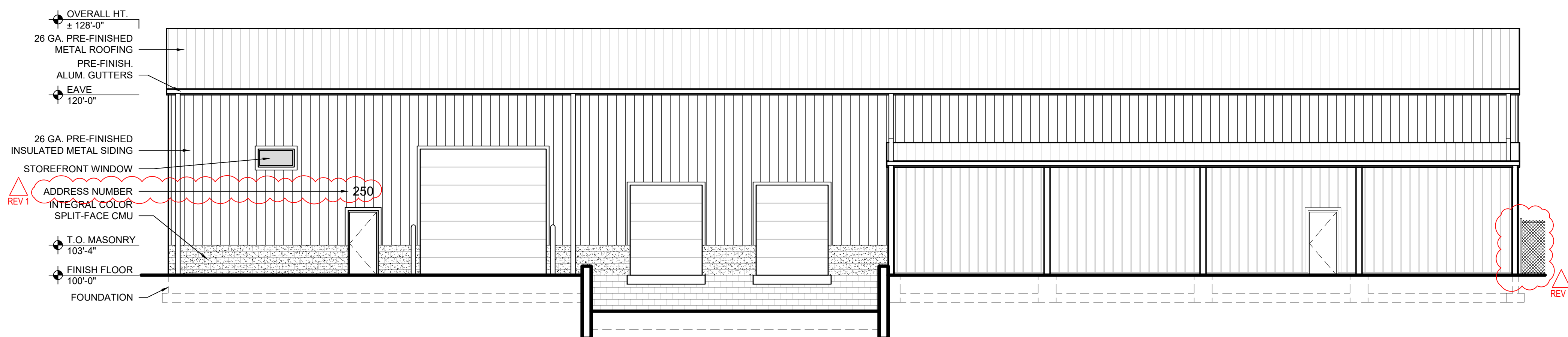
Sheet Title
Exterior Elevations

Sheet Number

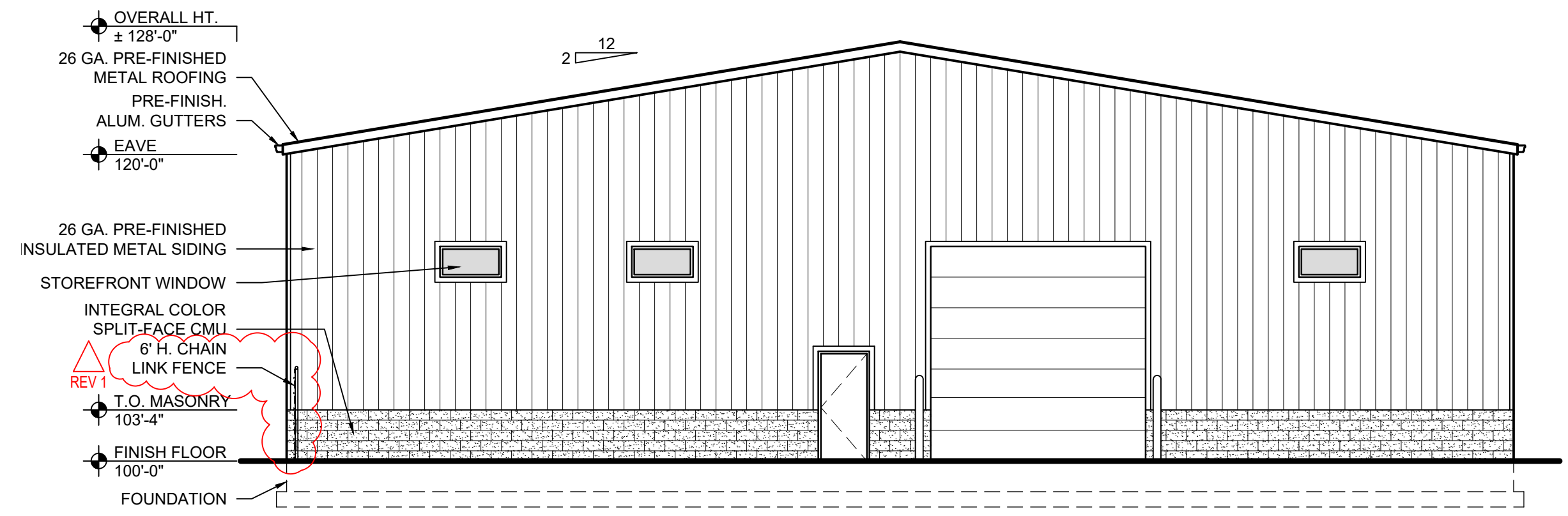
A2.1



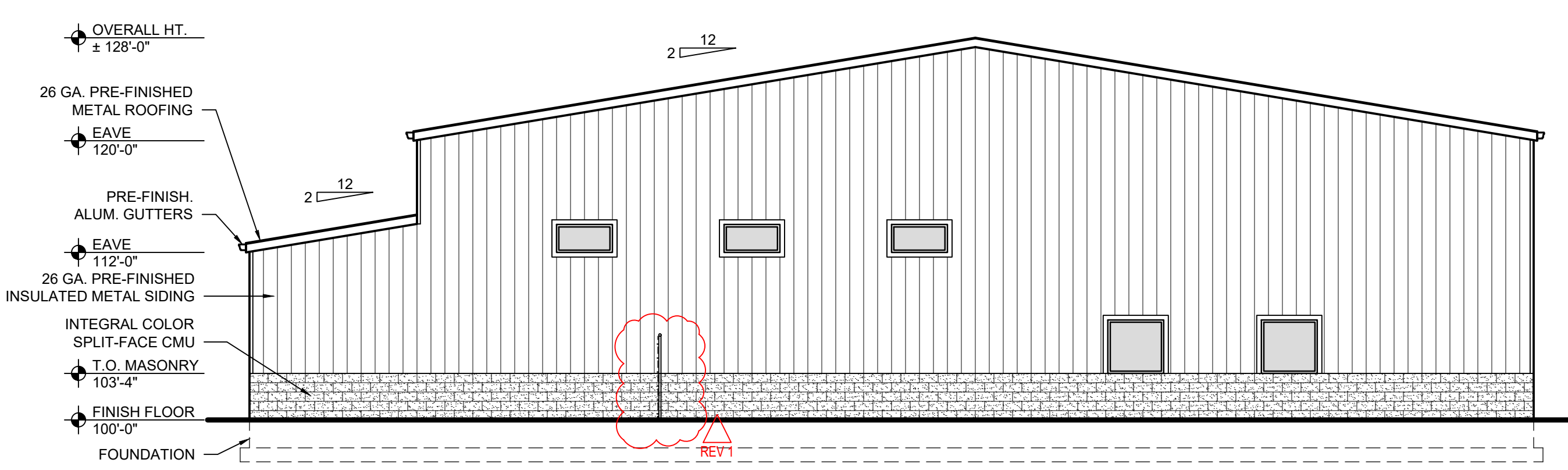
A NORTH ELEVATION
SCALE: 1/8" = 1'-0"



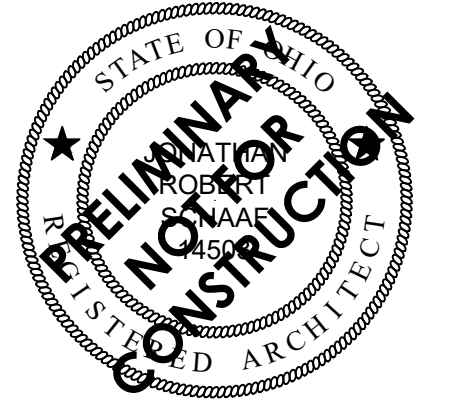
B SOUTH ELEVATION
SCALE: 1/8" = 1'-0"



C WEST ELEVATION
SCALE: 1/8" = 1'-0"



D EAST ELEVATION
SCALE: 1/8" = 1'-0"



Jonathan Robert Schaal #14503
Expiration Date 12/31/2027

This drawing is the architect's instrument of service for use solely with respect to this project. RDA Group Architects is the author of this document and shall retain all copyrights and other reserved rights, unless otherwise agreed upon in writing. © RDA 2025

RDA GROUP ARCHITECTS
7662 PARAGON ROAD | DAYTON, OH 45459 | 937.610.3440



New Fabrication Building For:
American Roofing
250 Industrial Drive
Franklin, OH 45005



A NORTH ELEVATION
SCALE: 1/8" = 1'-0"
0 4 8 16



B SOUTH ELEVATION
SCALE: 1/8" = 1'-0"
0 4 8 16



C WEST ELEVATION
SCALE: 1/8" = 1'-0"
0 4 8 16



D EAST ELEVATION
SCALE: 1/8" = 1'-0"
0 4 8 16

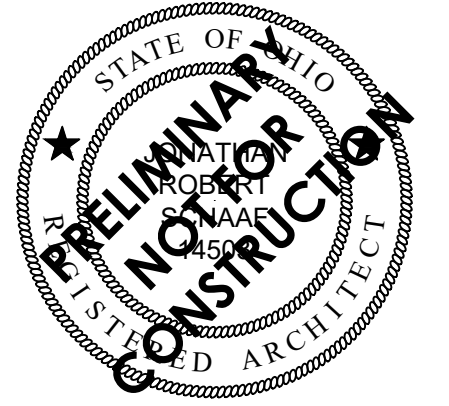
Project Number
2025-071

Date
May 1, 2026

Date Issue
05.01.26 Planning Submittal

Sheet Title
Rendered
Exterior Elevations

Sheet Number
A2.2



Jonathan Robert Schaaf #14503
Expiration Date 12/31/2027

This drawing is the architect's instrument of service for use solely with respect to this project. RDA Group Architects is the author of this document and shall retain all copyrights and other reserved rights, unless otherwise agreed upon in writing. © RDA 2025

RDA GROUP ARCHITECTS
7662 PARAGON ROAD | DAYTON, OH 45459 | 937.610.3440



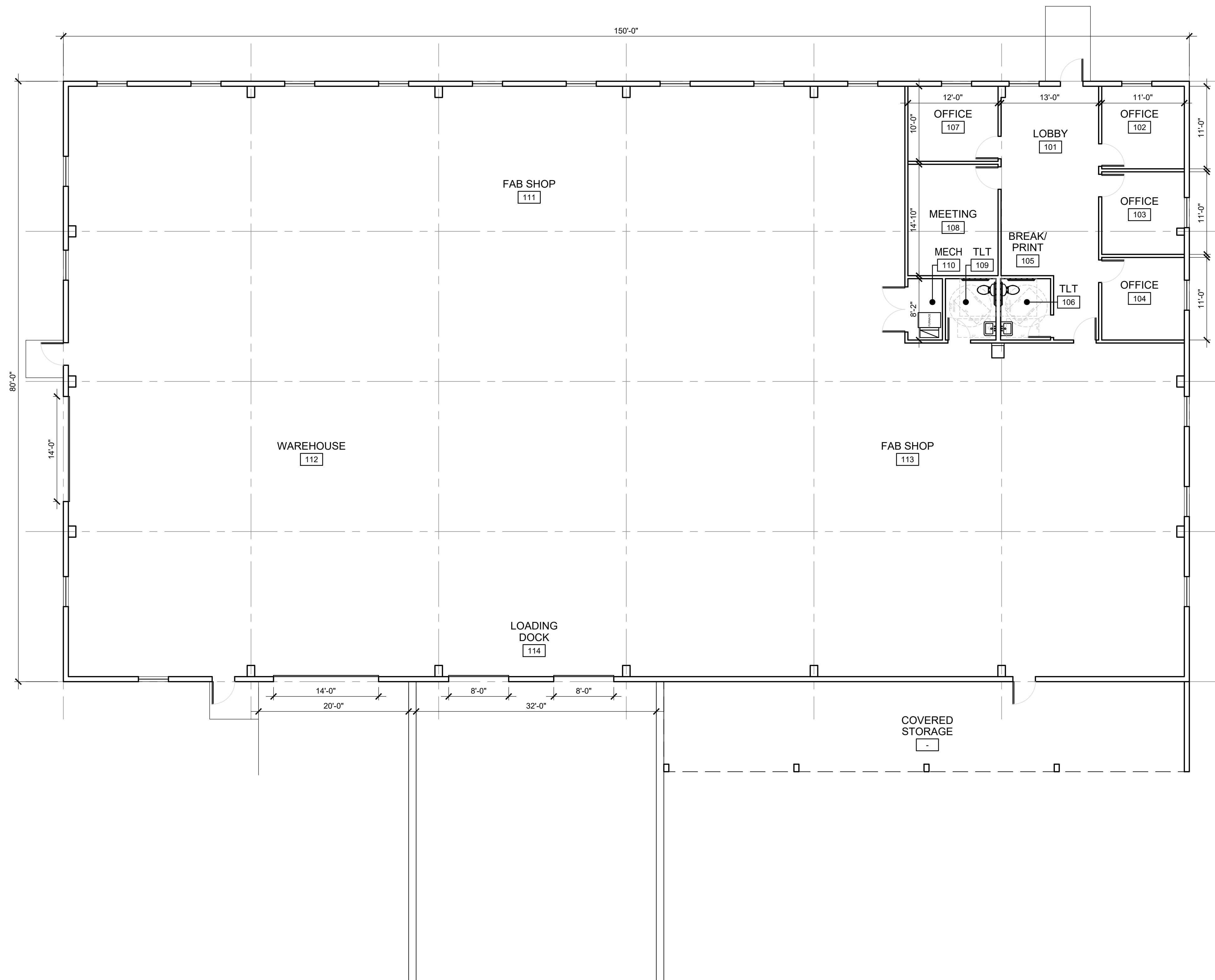
New Fabrication Building For:
American Roofing
250 Industrial Drive
Franklin, OH 45005

Project Number	2025-071
Date	May 21, 2026
Date	Issue
05.01.26	Planning Submittal
05.21.26	Planning REV 1

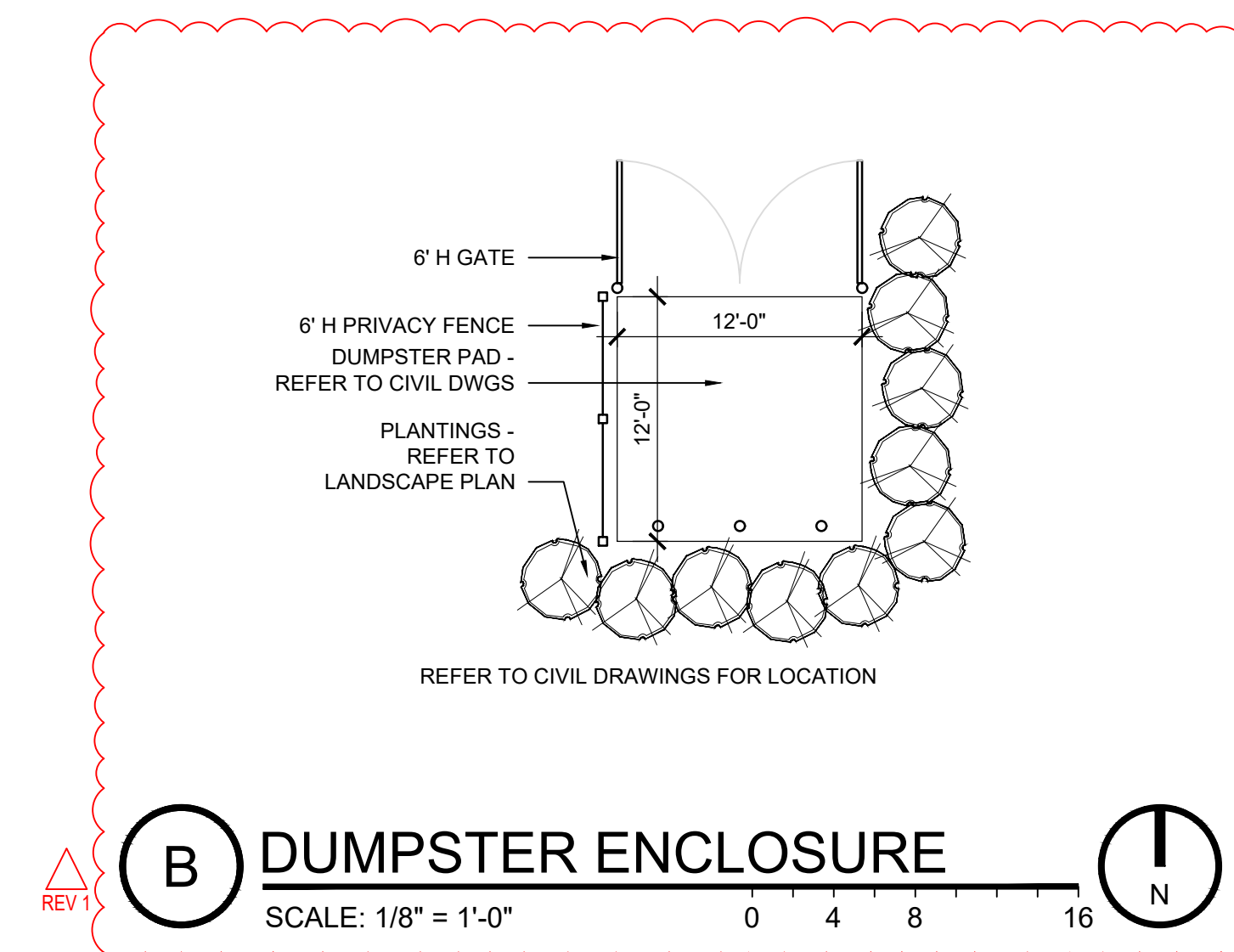
Sheet Title
Proposed Floor Plan

Sheet Number

A1.1



A PROPOSED FLOOR PLAN
SCALE: 1/8" = 1'-0"
0 4 8 16



B DUMPSTER ENCLOSURE
SCALE: 1/8" = 1'-0"
0 4 8 16

Luminaire Schedule									
Project: American Roofing - Site									
Symbol	Qty	Label	Arrangement	Description	LF	Luminaire Lumens	Luminaire Watts	Total Watts	
II	15	WP1	Single	Lithonia VDG3 LED P4 40K 70CRI RFT MVOLT SRM FINISH	0.363	12277	87.89	1318.35	

Calculation Summary							
Project: American Roofing - Site							
Label	CalcType	Units	Avg	Max	Min	Avg/Min	Max/Min
CalcPts taken Overall	Illuminance	Fc	1.00	10.4	0.0	N.A.	N.A.

NOTES:
FIXTURES ARE MOUNTED ON THE BUILDINGS AT 16'-0" A.F.G.



IF USING PRODUCTS WITH SELECTABLE KELVIN TEMPERATURES AND/OR ADJUSTABLE LUMEN PACKAGES, PLEASE ENSURE THOSE FIXTURES ARE SET IN THE FIELD TO THE DESIGN PROVIDED ON THIS DRAWING

THIS DOCUMENT IS THE PRODUCT AND EXCLUSIVE PROPERTY OF KING LIGHTING, INC. NEITHER THE DOCUMENT NOR THE INFORMATION IT CONTAINS MAY BE COPIED OR USED BY ANY COMPANY OTHER THAN THE COMPANY FOR WHICH IT WAS PREPARED WITHOUT THE EXPLICIT CONSENT OF KING LIGHTING, INC. ANY VIOLATION MAY RESULT IN APPROPRIATE LEGAL ACTION.

Design Criteria

DESIGN FILE: AmericanRoofing_Site043026.dwg	FIXTURE LAYOUT IS BASED ON A 0.90LIGHT LOSS FACTOR AND REFLECTANCE VALUES UNLESS NOTED OTHERWISE.
MINIMUM: MAXIMUM: AVERAGE:	AVE./MIN: MAX./AVE: MAX./MIN:
INTERIOR LIGHTING LEVELS ARE SHOWN AT 0'-0" A.F.G. UNLESS NOTED OTHERWISE	EXTERIOR LIGHTING LEVELS ARE SHOWN AT 0'-0" A.F.G. UNLESS NOTED OTHERWISE

King Lighting, Inc.
700 West Pete Ross Way - Suite 215
Cincinnati, OH 45203
(859) 261-5511 Fax (859) 261-2228
www.king-lighting.com

Lighting Calculations for
American Roofing - Site

LIGHTING SITE PLAN	SCALE 1"=30'-0"	DESIGNER JJ	CHECKED JJ	DATE 04/30/26	SHEET S1
--------------------	-----------------	-------------	------------	---------------	----------

Disclaimer: AGI and Genlyte has made great efforts to ensure the accuracy of their program, however AGI, Genlyte and King Lighting Inc. assume no liability for the decisions made with the assistance of these design programs. Actual light levels generated by installed luminaires may differ from the light levels predicted by AGI or GENLYTE for a number of reasons including (but not limited to) electrical supply, equipment tolerances, installation details, lamp/ballast interaction, thermal factors and obstructions from within the space.



WEDGE3 LED Architectural Wall Sconce

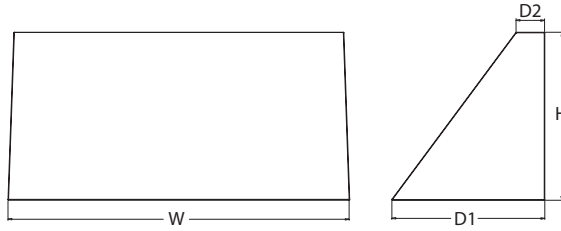


Catalog Number
Notes
Type

Hit the Tab key or mouse over the page to see all interactive elements.

Specifications

Depth (D1):	8"
Depth (D2):	1.5"
Height:	9"
Width:	18"
Weight: (without options)	19.5 lbs



Introduction

The WEDGE LED family is designed to meet specifier's every wall-mounted lighting need in a widely accepted shape that blends with any architecture. The clean rectilinear design comes in four sizes with lumen packages ranging from 1,200 to 25,000 lumens, providing a true site-wide solution. Embedded with nLight® AIR wireless controls, the WEDGE family provides additional energy savings and code compliance.

WEDGE3 has been designed to deliver up to 12,000 lumens through a precision refractive lens with wide distribution, perfect for augmenting the lighting from pole mounted luminaires.



Items marked by a shaded background qualify for the Design Select program and ship in 15 days or less. To learn more about Design Select, visit www.acuitybrands.com/designselect.
*See ordering tree for details

WEDGE LED Family Overview

Luminaire	Optics	Standard EM, 0°C	Cold EM, -20°C	Sensor	Approximate Lumens (4000K, 80CRI)						
					P0	P1	P2	P3	P4	P5	P6
WEDGE1 LED	Visual Comfort	4W		--	750	1,200	2,000	--	--	--	--
WEDGE2 LED	Visual Comfort	10W	18W	Standalone / nLight	--	1,200	2,000	3,000	4,500	6,000	--
WEDGE2 LED	Precision Refractive	10W	18W	Standalone / nLight	700	1,200	2,000	3,200	4,200	--	--
WEDGE3 LED	Precision Refractive	15W	18W	Standalone / nLight	6,000	7,500	8,500	10,000	12,000	--	--
WEDGE4 LED	Precision Refractive			Standalone / nLight	--	12,000	16,000	18,000	20,000	22,000	25,000

Ordering Information

EXAMPLE: WEDGE3 LED P3 40K 70CRI R3 MVOLT SRM DDBXD

Series	Package	Color Temperature	CRI	Distribution	Voltage	Mounting
WEDGE3 LED	P0 P1 P2 P3 P4	30K 3000K 40K 4000K 50K 5000K	70CRI 80CRI	R2 Type 2 R3 Type 3 R4 Type 4 RFT Forward Throw	MVOLT 347 ¹ 480 ¹	Shipped included SRM Surface mounting bracket ICW Indirect Canopy/Ceiling Washer bracket (dry/damp locations only) ²
						Shipped separately AWS 3/8 inch Architectural wall spacer ³ PBBW Surface-mounted back box (top, left, right conduit entry). Use when there is no junction box available. ³

Options	Finish
<p>E15WH Emergency battery backup, Certified in CA Title 20 MAEDBS (15W, 5°C min)</p> <p>E20WC Emergency battery backup, Certified in CA Title 20 MAEDBS (18W, -20°C min)</p> <p>PE Photocell, Button Type⁴</p> <p>DMG 0-10V dimming wires pulled outside fixture (for use with an external control, ordered separately)⁵</p> <p>BCE Bottom conduit entry for back box (PBBW). Total of 4 entry points.</p> <p>SPD10KV 10kV Surge pack⁶</p> <p>CCE Coastal Construction³</p>	<p>Standalone Sensors/Controls</p> <p>PIR Bi-level (100/35%) motion sensor for 8-15' mounting heights. Intended for use on switched circuits with external dusk to dawn switching.</p> <p>PIRH Bi-level (100/35%) motion sensor for 15-30' mounting heights. Intended for use on switched circuits with external dusk to dawn switching.</p> <p>PIR1FC3V Bi-level (100/35%) motion sensor for 8-15' mounting heights with photocell pre-programmed for dusk to dawn operation.</p> <p>PIRH1FC3V Bi-level (100/35%) motion sensor for 15-30' mounting heights with photocell pre-programmed for dusk to dawn operation.</p> <p>Networked Sensors/Controls</p> <p>NLTAIR2 PIR Embedded wireless controls by nLight with Passive Infrared Occ sensor and on/off photocell for 8-15' mounting heights.</p> <p>NLTAIR2 PIRH Embedded wireless controls by nLight with Passive Infrared Occ sensor and on/off photocell for 15'-30' mounting heights.</p> <p>NLTAIREM2 PIR Embedded wireless controls by nLight with UL924 listed emergency operation, Passive Infrared Occ sensor and on/off photocell for 8-15' mounting heights⁷</p> <p>NLTAIREM2 PIRH Embedded wireless controls by nLight with UL924 listed emergency operation, Passive Infrared Occ sensor and on/off photocell for 15'-30' mounting heights</p> <p>See page 4 for out of box functionality</p>
	<p>DDBXD Dark bronze</p> <p>DBLXD Black</p> <p>DNAXD Natural aluminum</p> <p>DWHXD White</p> <p>DSSXD Sandstone</p> <p>DBBTXD Textured dark bronze</p> <p>DBLTXD Textured black</p> <p>DNATXD Textured natural aluminum</p> <p>DWHGXD Textured white</p> <p>DSSTXD Textured sandstone</p>

Accessories

Ordered and shipped separately.

WEDGEAWS DDBXD	WEDGE 3/8inch Architectural Wall Spacer (specify finish)
WEDGE3PBBW DDBXD U	WEDGE3 surface-mounted back box (specify finish)

NOTES

- 347V and 480V not available with E15WH and E20WC.
- Not qualified for DLC. Not available with emergency battery backup or sensors/controls.
- For PBBW and AWS with CCE option, require an RFA.
- PE not available in 480V and with sensors/controls.
- DMG option not available with sensors/controls.
- Not available with E20WC option.
- Available with MVOLT only and only rated to 25C ambient.



COMMERCIAL OUTDOOR

One Lithonia Way • Conyers, Georgia 30012 • Phone: 1-800-705-SERV (7378) • www.lithonia.com
© 2019-2025 Acuity Brands Lighting, Inc. All rights reserved.

WEDGE3 LED
Rev. 02/24/25

Performance Data

Lumen Output

Lumen values are from photometric tests performed in accordance with IESNA LM-79-08. Data is considered to be representative of the configurations shown, within the tolerances allowed by Lighting Facts. Contact factory for performance data on any configurations not shown here.

Performance Package	System Watts	Dist. Type	30K (3000K, 70 CRI)					40K (4000K, 70 CRI)					50K (5000K, 70 CRI)				
			Lumens	LPW	B	U	G	Lumens	LPW	B	U	G	Lumens	LPW	B	U	G
P0	41W	R2	6,172	151	1	0	1	6,104	149	2	0	1	6,394	156	2	0	1
		R3	6,071	148	1	0	2	6,004	146	1	0	2	6,290	153	1	0	2
		R4	6,256	153	1	0	2	6,187	151	1	0	2	6,481	158	1	0	2
		RFT	6,126	149	1	0	2	6,058	148	1	0	2	6,347	155	1	0	2
P1	52W	R2	7,037	136	1	0	1	7,649	148	2	0	1	7,649	148	2	0	1
		R3	6,922	134	1	0	2	7,524	145	1	0	2	7,524	145	1	0	2
		R4	7,133	138	1	0	2	7,753	150	1	0	2	7,753	150	1	0	2
		RFT	6,985	135	1	0	2	7,592	147	1	0	2	7,592	147	1	0	2
P2	59W	R2	7,968	135	2	0	1	8,661	147	2	0	1	8,661	147	2	0	1
		R3	7,838	133	1	0	2	8,519	144	1	0	2	8,519	144	1	0	2
		R4	8,077	137	1	0	2	8,779	149	1	0	2	8,779	149	1	0	2
		RFT	7,909	134	1	0	2	8,597	146	2	0	2	8,597	146	2	0	2
P3	71W	R2	9,404	132	2	0	1	10,221	143	2	0	1	10,221	143	2	0	1
		R3	9,250	130	2	0	2	10,054	141	2	0	2	10,054	141	2	0	2
		R4	9,532	134	2	0	2	10,361	145	2	0	2	10,361	145	2	0	2
		RFT	9,334	131	2	0	2	10,146	142	2	0	2	10,146	142	2	0	2
P4	88W	R2	11,380	129	2	0	1	12,369	140	2	0	1	12,369	140	2	0	1
		R3	11,194	127	2	0	2	12,167	138	2	0	2	12,167	138	2	0	2
		R4	11,535	131	2	0	2	12,538	142	2	0	2	12,538	142	2	0	2
		RFT	11,295	128	2	0	2	12,277	139	2	0	2	12,277	139	2	0	2

Lumen Output in Emergency Mode (4000K, 70 CRI)

Option	Dist. Type	Lumens
E15WH	R2	3,185
	R3	3,133
	R4	3,229
	RFT	3,162
E20WC	R2	3,669
	R3	3,609
	R4	3,719
	RFT	3,642

Electrical Load

Performance Package	System Watts	Current (A)					
		120V	208V	240V	277V	347V	480V
P1	52W	0.437	0.246	0.213	0.186	0.150	0.110
P2	59W	0.498	0.287	0.251	0.220	0.175	0.126
P3	71W	0.598	0.344	0.300	0.262	0.210	0.152
P4	88W	0.727	0.424	0.373	0.333	0.260	0.190

Lumen Multiplier for 80CRI

CCT	Multiplier
30K	0.891
40K	0.906
50K	0.906

Lumen Ambient Temperature (LAT) Multipliers

Use these factors to determine relative lumen output for average ambient temperatures from 0-40°C (32-104°F).

Ambient	Lumen Multiplier
0°C / 32°F	1.05
10°C / 50°F	1.03
20°C / 68°F	1.01
25°C / 77°F	1.00
30°C / 86°F	0.99
40°C / 104°F	0.97

Projected LED Lumen Maintenance

Data references the extrapolated performance projections for the platforms noted in a 25°C ambient, based on 10,000 hours of LED testing (tested per IESNA LM-80-08 and projected per IESNA TM-21-11).

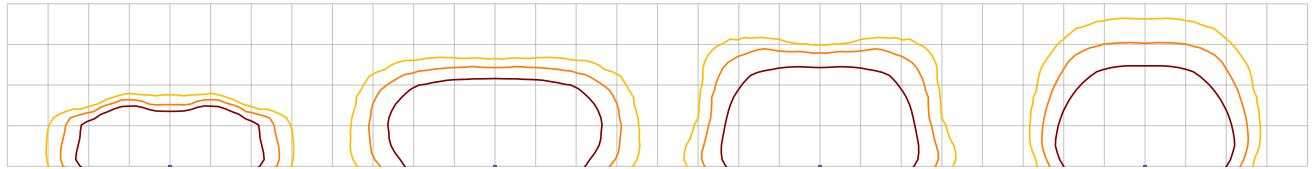
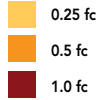
To calculate LLF, use the lumen maintenance factor that corresponds to the desired number of operating hours below. For other lumen maintenance values, contact factory.

Operating Hours	0	25,000	50,000	100,000
Lumen Maintenance Factor	1.0	>0.98	>0.97	>0.92

Photometric Diagrams

To see complete photometric reports or download .ies files for this product, visit the Lithonia Lighting WDGE LED homepage. Tested in accordance with IESNA LM-79 and LM-80 standards.

LEGEND



MH = 15ft
Grid = 15ft x 15ft

WDGE3 LED P3 40K 70CRI R2

WDGE3 LED P3 40K 70CRI R3

WDGE3 LED P3 40K 70CRI R4

WDGE3 LED P3 40K 70CRI RFT

Emergency Egress Options

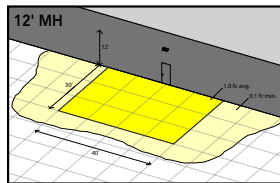
Emergency Battery Backup

The emergency battery backup is integral to the luminaire — no external housing required! This design provides reliable emergency operation while maintaining the aesthetics of the product. All emergency battery backup configurations include an independent secondary driver with an integral relay to immediately detect loss of normal power and automatically energize the luminaire. The emergency battery will power the luminaire for a minimum duration of 90 minutes (maximum duration of three hours) from the time normal power is lost and maintain, minimum of 60% of the light output at the end of 90minutes.

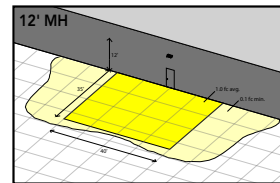
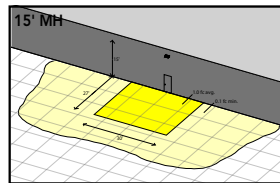
Applicable codes: NFPA 70/NEC – section 700.16, NFPA 101 Life Safety Code Section 7.9

The examples below show illuminance of 1 fc average and 0.1 fc minimum in emergency mode with E15WH or E20WC and R4 distribution.

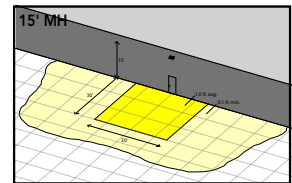
Grid = 10ft x 10ft



WDGE3 LED xx 40K 70CRI R4 MVOLT E15WH



WDGE3 LED xx 40K 70CRI R4 MVOLT E20WC



Control / Sensor Options

Motion/Ambient Sensor (PIR, PIRH)

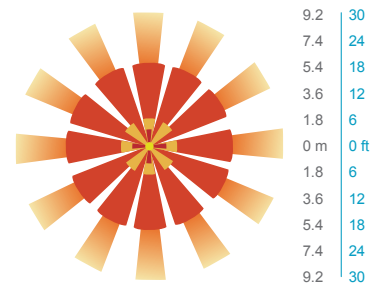
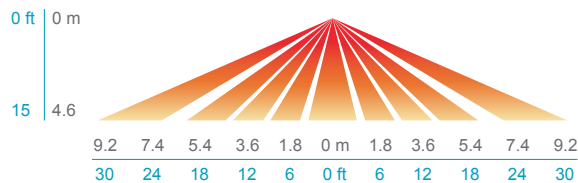
Motion/Ambient sensor (Sensor Switch MSOD) is integrated into the the luminaire. The sensor provides both Motion and Daylight based dimming of the luminaire. For motion detection, the sensor utilizes 100% Digital Passive Infrared (PIR) technology that is tuned for walking size motion while preventing false tripping from the environment. The integrated photocell enables additional energy savings during daytime periods when there is sufficient daylight. Optimize sensor coverage by either selecting PIR or PIRH option. PIR option comes with a sensor lens that is optimized to provide maximum coverage for mounting heights between 8-15ft, while PIRH is optimized for 15-40ft mounting height.

Networked Control (NLTAIR2)

nLight® AIR is a wireless lighting controls platform that allows for seamless integration of both indoor and outdoor luminaires. Five-tier security architecture, 900 MHz wireless communication and app (CLAIRITY™ Pro) based configurability combined together make nLight® AIR a secure, reliable and easy to use platform.

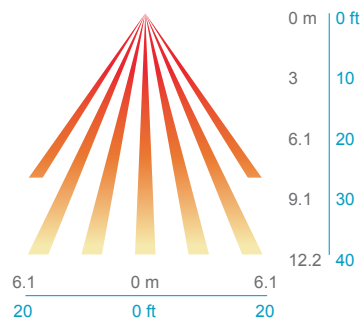
PIR

HIGH VIEW

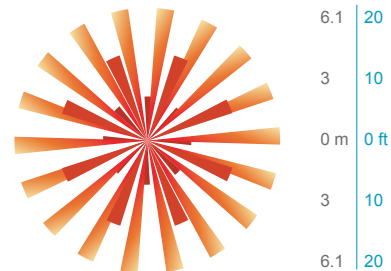


PIRH

SIDE VIEW



TOP VIEW



Motion/Ambient Sensor Default Settings

Option	Dim Level	High Level (when triggered)	Photocell Operation	Motion Time Delay	Ramp-down Time	Ramp-up Time
PIR or PIRH	Motion - 3V (37% of full output) Photocell - 0V (turned off)	10V (100% output)	Enabled @ 5fc	5 min	5 min	Motion - 3 sec Photocell - 45 sec
PIR1FC3V, PIRH1FC3V	Motion - 3V (37% of full output) Photocell - 0V (turned off)	10V (100% output)	Enabled @ 1fc	5 min	5 min	Motion - 3 sec Photocell - 45 sec
NLTAIR2 PIR, NLTAIR2 PIRH, NLTAIREM2 PIR, NLTAIREM2 PIRH (out of box)	Motion - 3V (37% of full output) Photocell - 0V (turned off)	10V (100% output)	Enabled @ 5fc	7.5 min	5 min	Motion - 3 sec Photocell - 45 sec

UL 924 Response - nLight AIR Devices with EM Option

- NLTAIREM2 devices will remain at their high-end trim and ignore wireless lighting control commands, unless a normal-power-sensed (NPS) broadcast is received at least every 8 seconds.
- Using the CLAIRITY+ mobile app, NLTAIREM2 devices must be associated with a group that includes a normal power sensing device to receive NPS broadcasts.
- The non-emergency devices, NLTAIR2 PIR and NLTAIR2 PIRH, with version 3.4 or later firmware can be used for normal power sensing.



**NLTAIR2 PIR – nLight AIR
Motion/Ambient Sensor**

D = 8"
H = 11"
W = 18"



PBBW – Surface-Mounted Back Box
Use when there is no junction box available.

D = 1.75"
H = 9"
W = 18"



AWS – 3/8inch Architectural Wall Spacer

D = 0.38"
H = 4.4"
W = 7.5"

FEATURES & SPECIFICATIONS

INTENDED USE

Common architectural look, with clean rectilinear shape, of the WDGE LED was designed to blend with any type of construction, whether it be tilt-up, frame or brick. Applications include commercial offices, warehouses, hospitals, schools, malls, restaurants, and other commercial buildings.

CONSTRUCTION

The single-piece die-cast aluminum housing to optimize thermal transfer from the light engine and promote long life. The driver is mounted in direct contact with the casting for a low operating temperature and long life. The die-cast door frame is fully gasketed with a one-piece solid silicone gasket to keep out moisture and dust, providing an IP65 rating for the luminaire.

FINISH

Exterior painted parts are protected by a zinc-infused Super Durable TGIC thermoset powder coat finish that provides superior resistance to corrosion and weathering. A tightly controlled multi-stage process ensures a 3 mils thickness for a finish that can withstand extreme climate changes without cracking or peeling. Standard Super Durable colors include dark bronze, black, natural aluminum, sandstone and white. Available in textured and non-textured finishes.

OPTICS

Individually formed acrylic lenses are engineered for superior application efficiency which maximizes the light in the areas where it is most needed. Light engines are available in 3000 K, 4000 K or 5000 K configurations. The WDGE LED has zero uplight and qualifies as a Nighttime Friendly™ product, meaning it is consistent with the LEED® and Green Globes™ criteria for eliminating wasteful uplight.

ELECTRICAL

Light engine consists of high-efficacy LEDs mounted to metal-core circuit boards to maximize heat dissipation and promote long life (up to L92/100,000 hours at 25°C). The electronic driver has a power factor of >90%, THD <20%. Luminaire comes with built in 6kV surge protection, which meets a minimum Category C low exposure (per ANSI/IEEE C62.41.2). Fixture ships standard with 0-10v dimmable driver.

INSTALLATION

A universal mounting plate with integral mounting support arms allows the fixture to hinge down for easy access while making wiring connections. The 3/8" Architectural Wall Spacer (AWS) can be used to create a floating appearance or to accommodate small imperfections in the wall surface. The ICW option can be used to mount the luminaire inverted for indirect lighting in dry and damp locations. Design can withstand up to a 1.5 G vibration load rating per ANSI C136.31.

LISTINGS

CSA certified to U.S. and Canadian standards. Light engines are IP66 rated; luminaire is IP65 rated. PIR options are rated for wet location. Rated for -40°C minimum ambient. DesignLights Consortium® (DLC) Premium qualified product and DLC qualified product. Not all versions of this product may be DLC Premium qualified or DLC qualified. Please check the DLC Qualified Products List at www.designlights.org/QPL to confirm which versions are qualified. International Dark-Sky Association (IDA) Fixture Seal of Approval (FSA) is available for all products on this page utilizing 3000K color temperature and SRM mounting only.

GOVERNMENT PROCUREMENT

BABA – Build America Buy America: Product qualifies as produced in the United States under the definitions of the Build America, Buy America Act. Please refer to www.acuitybrands.com/buy-american for additional information.

WARRANTY

5-year limited warranty. This is the only warranty provided and no other statements in this specification sheet create any warranty of any kind. All other express and implied warranties are disclaimed. Complete warranty terms located at: www.acuitybrands.com/support/warranty/terms-and-conditions

Note: Actual performance may differ as a result of end-user environment and application. All values are design or typical values, measured under laboratory conditions at 25 °C. Specifications subject to change without notice.