



K|B|A INCORPORATED
ARCHITECTS

29 HIGH STREET | 613.752.7800
Milford, OH 45150 | www.kbainc.com

SHEET CONTENTS:
FLOOR PLAN



Proposed Facility For:
SUBURBAN ACCESSORIES
Shaker Industrial Park
Franklin, Ohio

REV. CKD

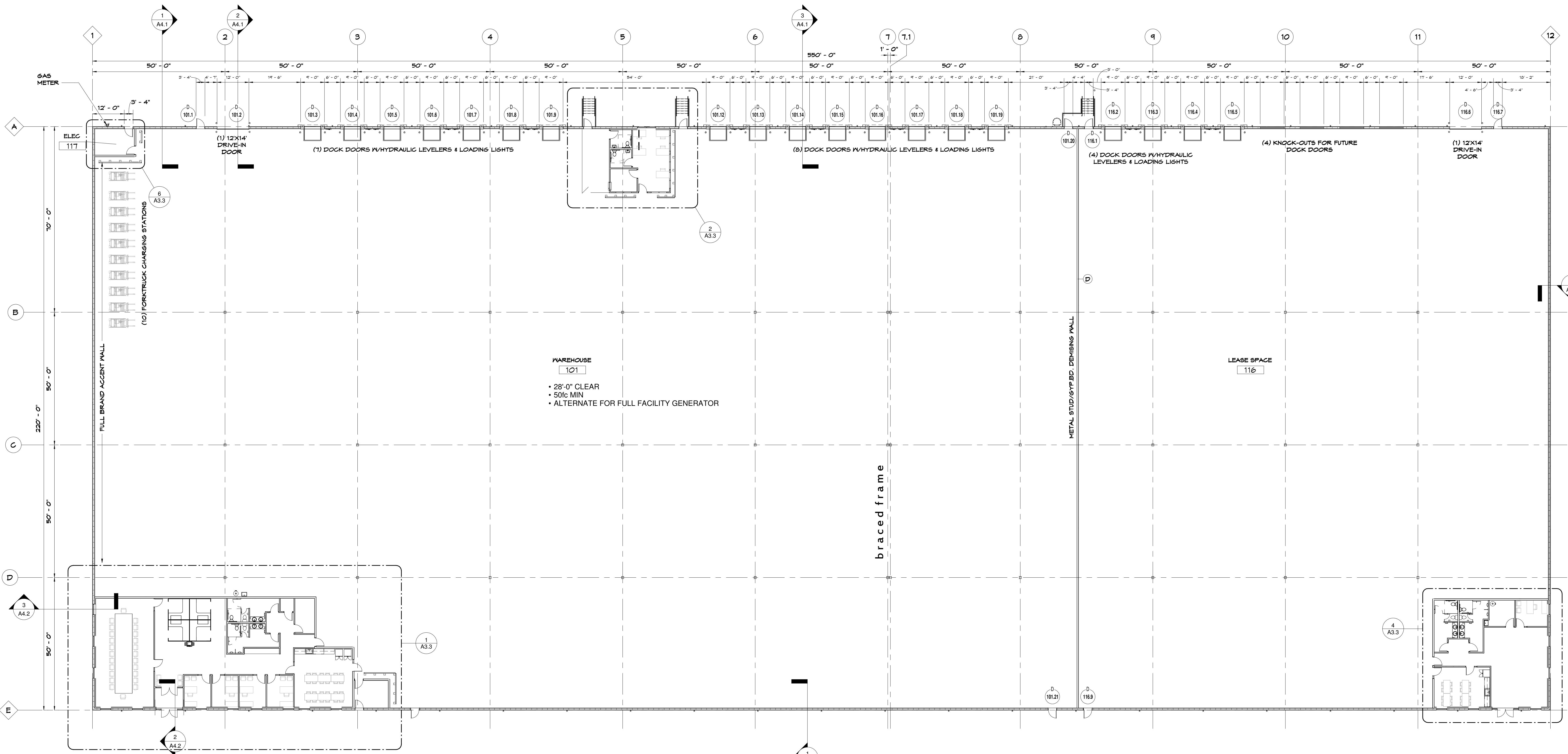
Drawn By: WNS Checked By: WNS

Preliminary
Not for
Construction

Date: 04.27.26 Job No: 26.028

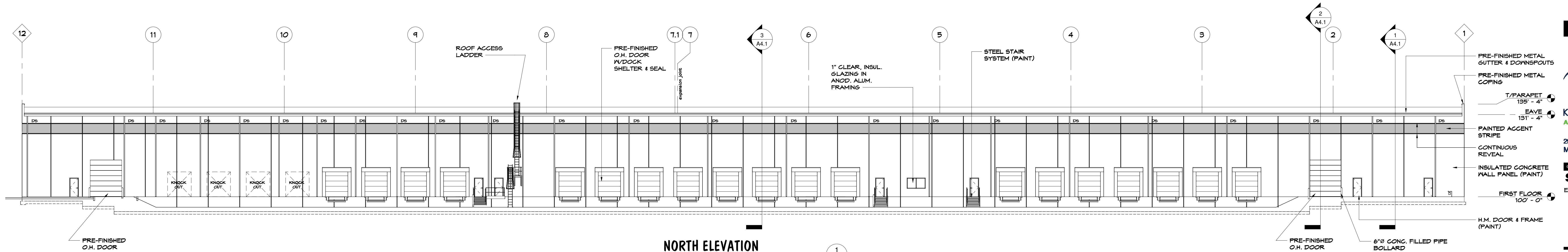
A1.1

of: 1

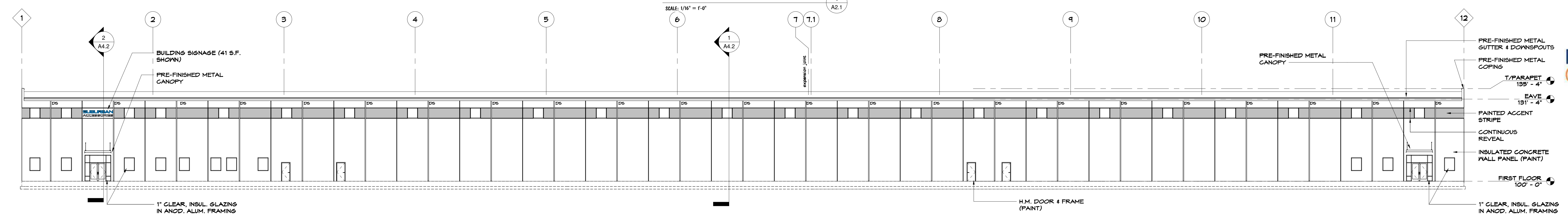


FIRST FLOOR
SCALE: 1/8" = 1'-0"

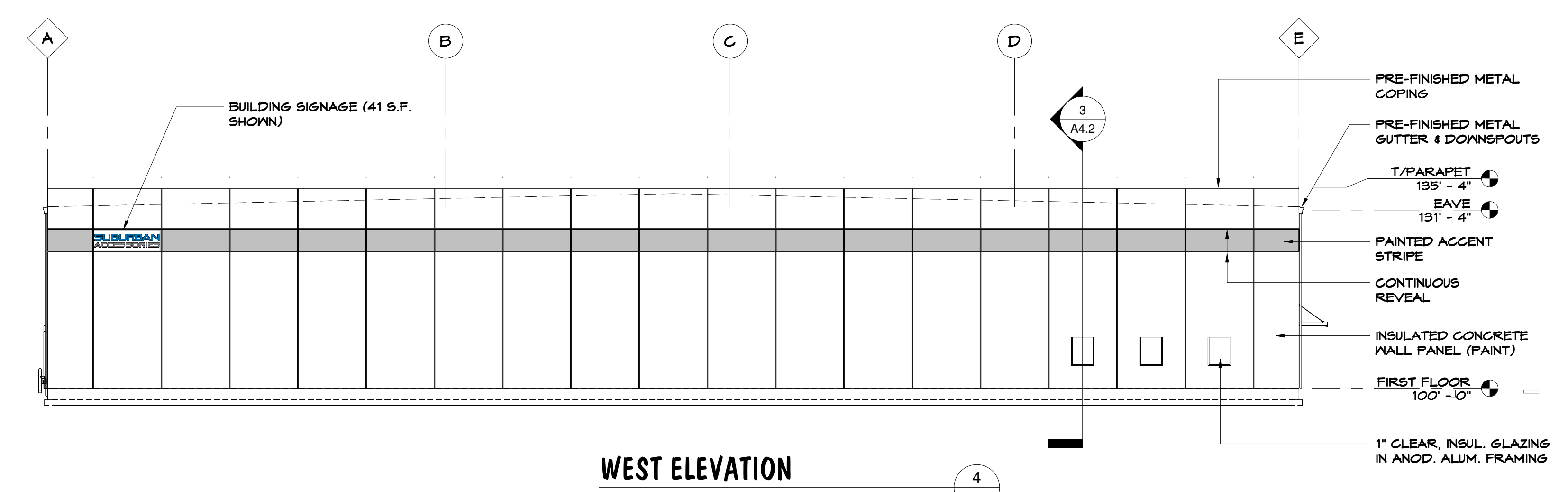
1
A1.1



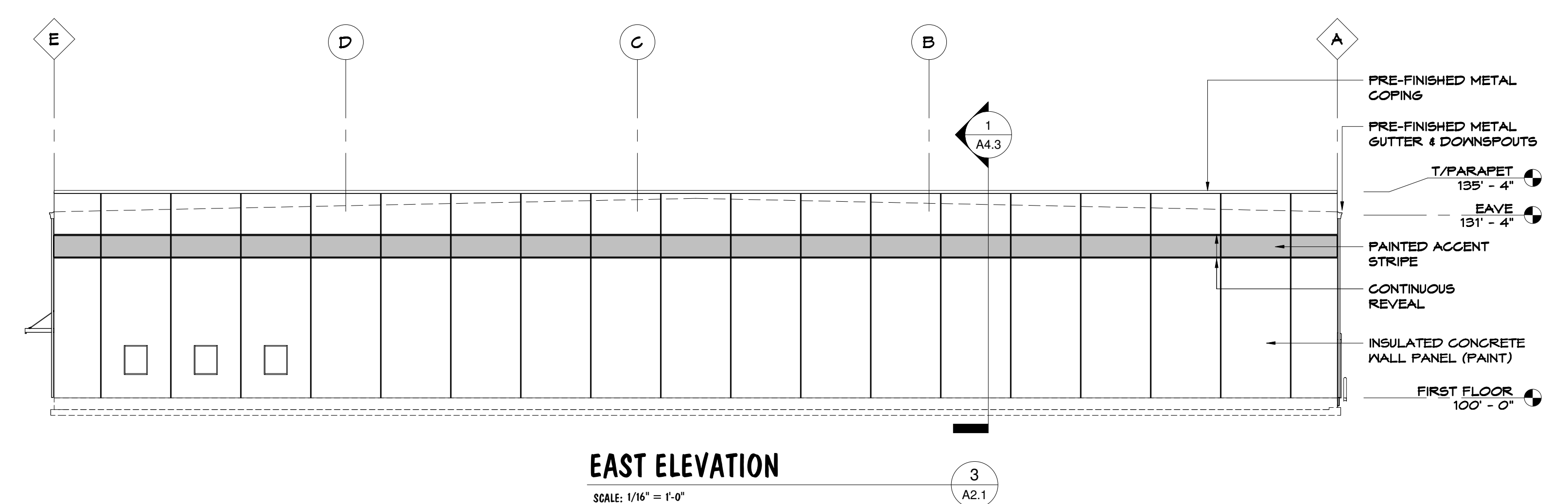
NORTH ELEVATION
SCALE: 1/16" = 1'-0"



SOUTH ELEVATION
SCALE: 1/16" = 1'-0"



WEST ELEVATION
SCALE: 1/16" = 1'-0"



EAST ELEVATION
SCALE: 1/16" = 1'-0"



KBJA INCORPORATED
ARCHITECTS
29 HIGH STREET | 613.752.7800
Milford, OH 45150 | www.kbjainc.com

SHEET CONTENTS:
ELEVATIONS



Bunnell Hill
Construction

Proposed Facility For:
SUBURBAN ACCESSORIES
 Shaker Industrial Park
 Franklin, Ohio

REV. CKD

Drawn By: WNS Checked By: WNS

Preliminary
 Not for
 Construction

Date: 04.27.26 Job No: 26.028

A2.1
of: 1



LOOKING NORTHEAST
SCALE: 1/2" = 1'-0"
1
RND1



LOOKING NORTHWEST
SCALE: 1/2" = 1'-0"
2
RND1



LOOKING SOUTHWEST
SCALE: 1/2" = 1'-0"
4
RND1



LOOKING SOUTHEAST
SCALE: 1/2" = 1'-0"
44
RND1



K|B|A INCORPORATED
ARCHITECTS
29 HIGH STREET | 513.752.7800
Millford, OH 45150 | www.kbalnc.com

SHEET CONTENTS:
RENDERINGS



Proposed Facility For:
SUBURBAN ACCESSORIES
Shaker Industrial Park
Franklin, Ohio

REV. CKD

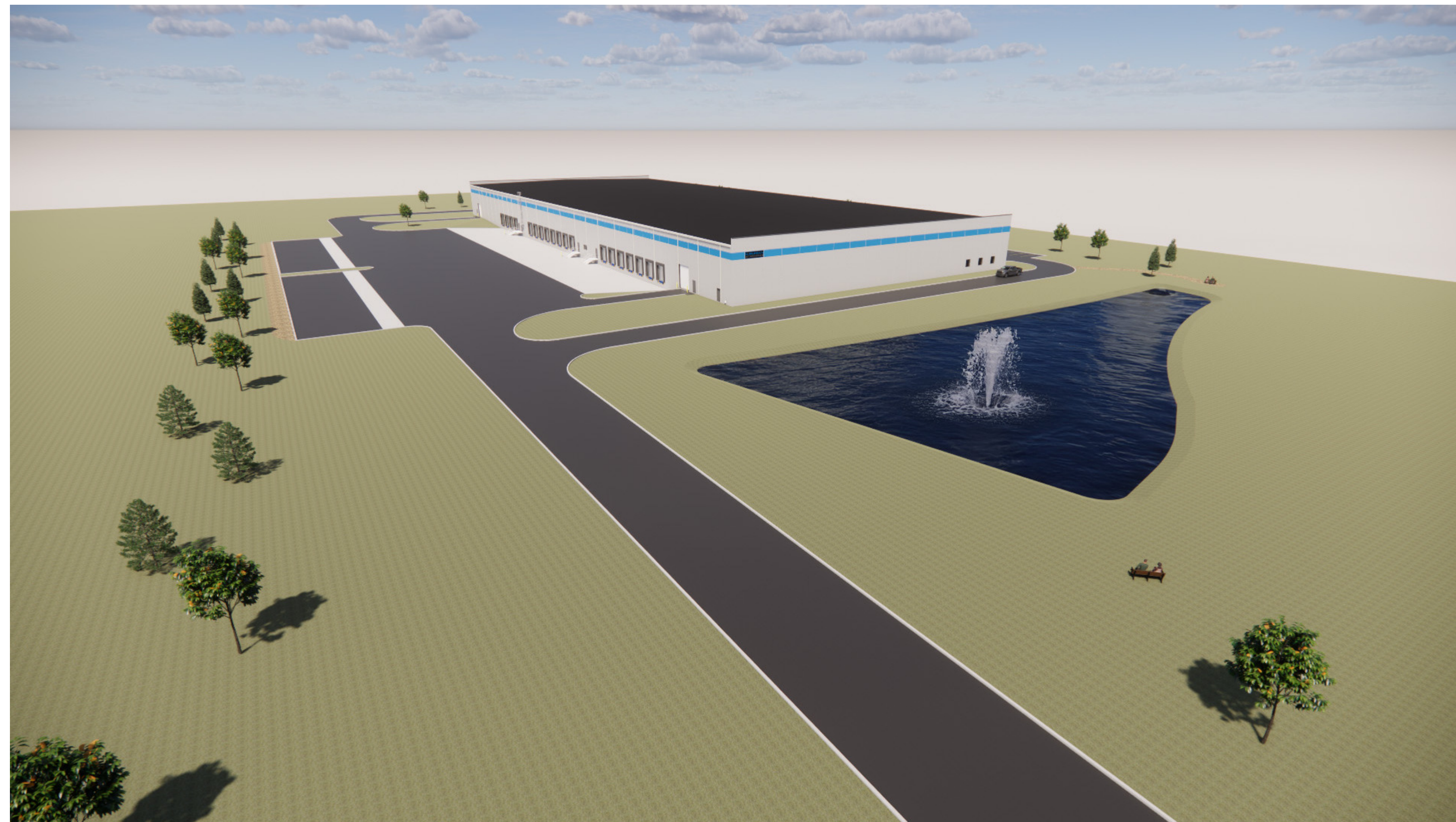
Drawn By: WNS Checked By: WNS

Preliminary
Not for
Construction

Date: 04.27.26 Job No: 26.028

RND1

of: 1



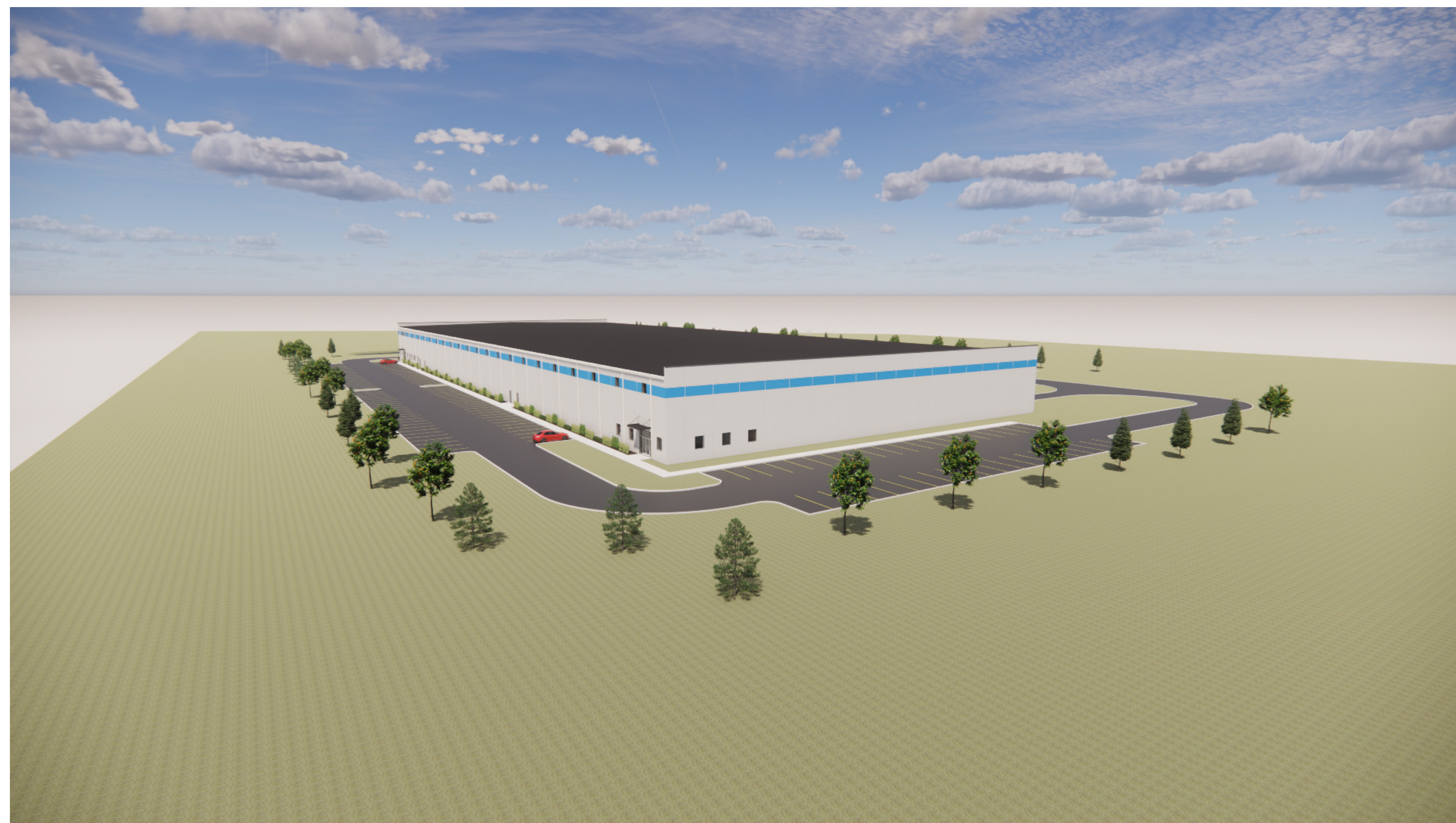
LOOKING SOUTHWEST
SCALE: 1/2" = 1'-0"

1
RND2



LOOKING NORTHEAST
SCALE: 1/2" = 1'-0"

2
RND2



LOOKING NORTHWEST
SCALE: 1/2" = 1'-0"

3
RND2



LOOKING SOUTHWEST
SCALE: 1/2" = 1'-0"

4
RND2



K|B|A INCORPORATED
ARCHITECTS
29 HIGH STREET | 613.752.7800
MILFORD, OH 45150 | www.kbalnc.com

SHEET CONTENTS:
RENDERINGS



Proposed Facility For:
SUBURBAN ACCESSORIES
Shaker Industrial Park
Franklin, Ohio

REV. CKD

Drawn By: WNS Checked By: WNS

Preliminary
Not for
Construction

Date: 04.27.26 Job No: 26.028

RND2

of: 1