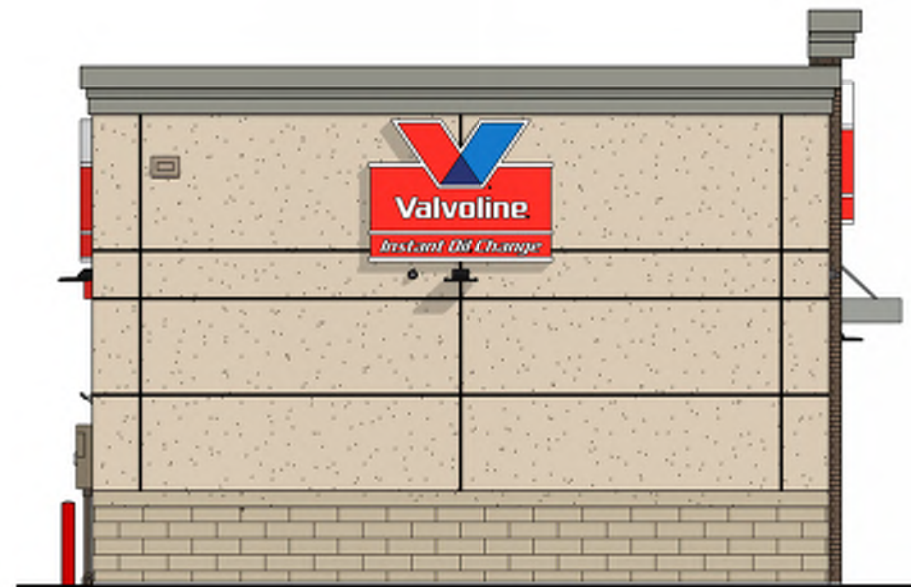




2 EXTERIOR ELEVATION (RIGHT)  
Scale: 1/8" = 1'-0"



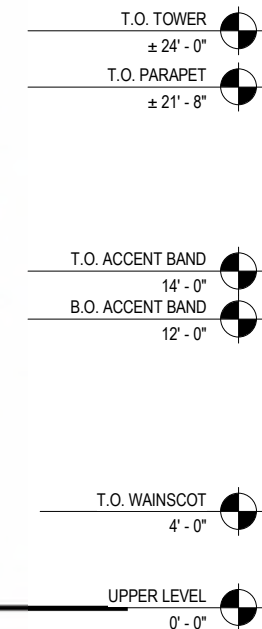
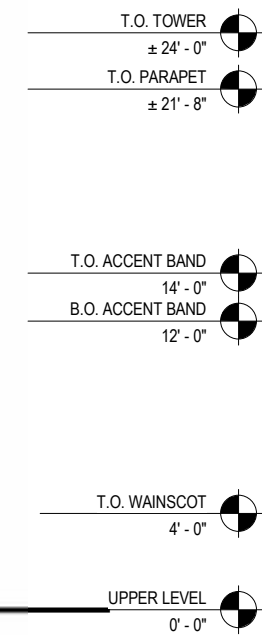
1 EXTERIOR ELEVATION (REAR)  
Scale: 1/8" = 1'-0"



4 EXTERIOR ELEVATION (LEFT)  
Scale: 1/8" = 1'-0"



3 EXTERIOR ELEVATION (FRONT)  
Scale: 1/8" = 1'-0"



5 TRASH ENCLOSURE ELEVATIONS  
Scale: 1/8" = 1'-0"

**EXTERIOR FINISHES - BRICK / EIFS**

EXTERIOR INSULATED FINISH SYSTEM:	DRYVIT (SANDPEBBLE FINE) COLOR #1: #113 AMARILLO WHITE	PREFABRICATED METAL CANOPY:	AWNEX INC. "SEATTLE" DESIGN PREFINISHED AWNEX "BENGAL SILVER"	STOREFRONT SYSTEM:	2x4 1/2" KAWNEER TRIFAB VG 451T SERIES CLEAR ANODIZED ALUMINUM STOREFRONT SYSTEM W/ 1" INSULATED GLAZING.
THIN BRICK #1 (TOWER):	GLEN-GERY "MODULAR BAXTER BROWN WIRECUT"	PARAPET CAP FLASHING:	ALUMINUM BREAK METAL PREFINISHED TO MATCH PAC-CLAD "SILVER"	TRASH ENCLOSURE GATE SYSTEM:	FIELD PAINT-SHERWIN-WILLIAMS SW-7515 "HOMESTEAD BROWN". PROVIDE MOCK-UP AND VERIFY COLOR W/ OWNER
THIN STONE SYSTEM:	ARRISCRAFT "ARRIS-CLIP" RENAISSANCE COLOR: 'MAGNOLIA' FINISH: SMOOTH	TOWER SOFFIT AND FASCIA:	PAC-CLAD SNAP EDGE EXTENDED FASCIA (12-12") PREFINISHED PAC-CLAD "SILVER"	O.H. DOOR FINISH:	CLEAR ANODIZED ALUMINUM
THIN STONE SILL:	ARRISCRAFT "ARRIS-CLIP" RENAISSANCE COLOR: 'MAGNOLIA' FINISH: ROCKED	THRU-WALL SCUPPER:	ALUMINUM BREAK METAL - PREFINISHED TO MATCH DIMENSIONAL METALS, INC. - "BEIGE"	ACCESS PANEL:	STAINLESS STEEL
PRECAST CAP TRASH ENCLOSURE:	CUSTOM CAST STONE - "LIGHT BUFF"				
MORTAR:	LEHIGH STANDARD KIT - "BEIGE"				
MASONRY SEALER:	ALL MASONRY SURFACES SHALL BE TREATED w/ SEALER.				

ISSUE RECORD	DATE

VIOC - FRANKLIN, OH (E 2ND)



Project No: 767517.01