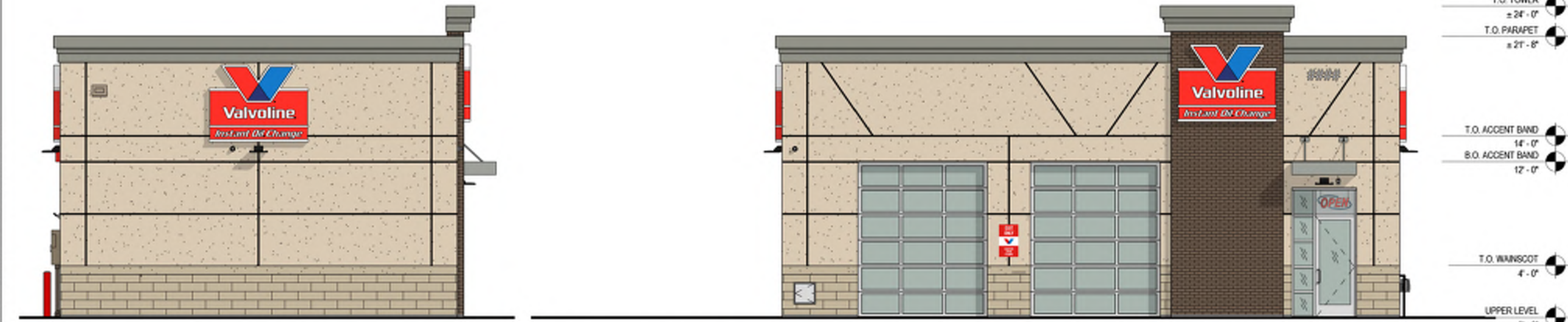




2 EXTERIOR ELEVATION (RIGHT)
Scale: 1/8" = 1'-0"

1 EXTERIOR ELEVATION (REAR)
Scale: 1/8" = 1'-0"

- T.O. TOWER ± 24'-0"
- T.O. PARAPET ± 21'-8"
- T.O. ACCENT BAND 14'-0"
- B.O. ACCENT BAND 12'-0"
- T.O. WANSCOT 4'-0"
- UPPER LEVEL 0'-0"



4 EXTERIOR ELEVATION (LEFT)
Scale: 1/8" = 1'-0"

3 EXTERIOR ELEVATION (FRONT)
Scale: 1/8" = 1'-0"

- T.O. TOWER ± 24'-0"
- T.O. PARAPET ± 21'-8"
- T.O. ACCENT BAND 14'-0"
- B.O. ACCENT BAND 12'-0"
- T.O. WANSCOT 4'-0"
- UPPER LEVEL 0'-0"



5 TRASH ENCLOSURE ELEVATIONS
Scale: 1/8" = 1'-0"

EXTERIOR FINISHES - BRICK / EIFS

EXTERIOR INSULATED FINISH SYSTEM:	DRYWIT (SANDBLEBBLE FINE) COLOR #1: #113 AMARILLO WHITE	PREFABRICATED METAL CANOPY:	AWNEX INC. "SEATTLE" DESIGN PREFINISHED AWNEX "BENGAL SILVER"	STOREFRONT SYSTEM:	2x4 1/2" KAWNEER TRIFAB VG 451T SERIES CLEAR ANODIZED ALUMINUM STOREFRONT SYSTEM W/ 1" INSULATED GLAZING
THIN BRICK #1 (TOWER):	GLEN-GERY "MODULAR BAXTER BROWN WIRECUT"	PARAPET CAP FLASHING:	ALUMINUM BREAK METAL PREFINISHED TO MATCH PAC-CLAD "SILVER"	TRASH ENCLOSURE GATE SYSTEM:	FIELD PAINT SHERWIN-WILLIAMS SW-7515 "HOMESTEAD BROWN". PROVIDE MOCK-UP AND VERIFY COLOR W/ OWNER
THIN STONE SYSTEM:	ARRISCRAFT "ARRIS-CLIP" RENAISSANCE COLOR: "MAGNOLIA" FINISH: SMOOTH	TOWER SOFFIT AND FASCIA:	PAC-CLAD SNAP EDGE EXTENDED FASCIA (12-12") PREFINISHED PAC-CLAD "SILVER"	O.H. DOOR FINISH:	CLEAR ANODIZED ALUMINUM
THIN STONE SILL:	ARRISCRAFT "ARRIS-CLIP" RENAISSANCE COLOR: "MAGNOLIA" FINISH: ROCKED	THRU-WALL SCUPPER:	ALUMINUM BREAK METAL - PREFINISHED TO MATCH DIMENSIONAL METALS, INC. - "BEIGE"	ACCESS PANEL:	STAINLESS STEEL
PRECAST CAP TRASH ENCLOSURE:	CUSTOM CAST STONE - "LIGHT BUFF"				
MORTAR:	LEHIGH STANDARD KIT - "BEIGE"				
MASONRY SEALER:	ALL MASONRY SURFACES SHALL BE TREATED w/ SEALER				

ISSUE RECORD	DATE

VIOC - FRANKLIN, OH (E 2ND)



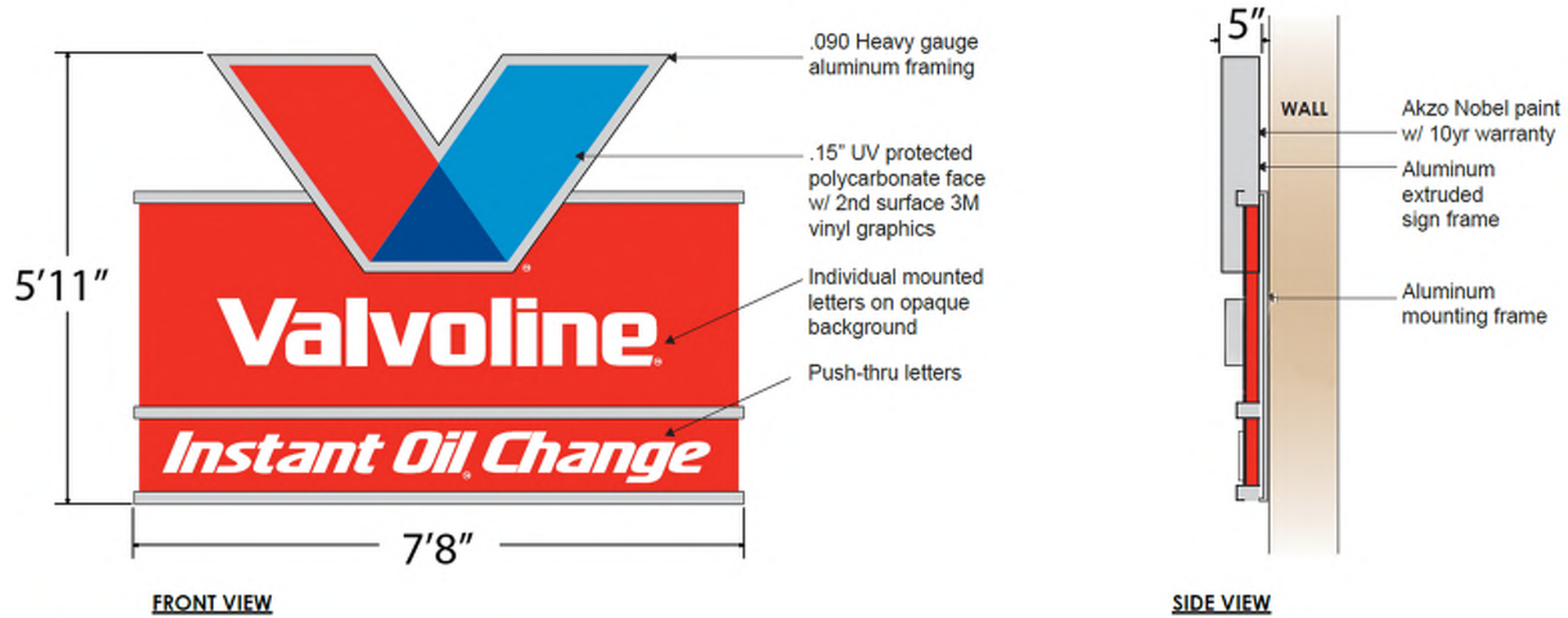
Project No: 767517.01

2/9/2026 4:01:10 PM Autodesk Docs/VIOC Franklin OH (SR72)VIOC - Franklin, OH (SR72) - Rev04.rvt



(E 2nd) Franklin, OH

45sf Wall sign

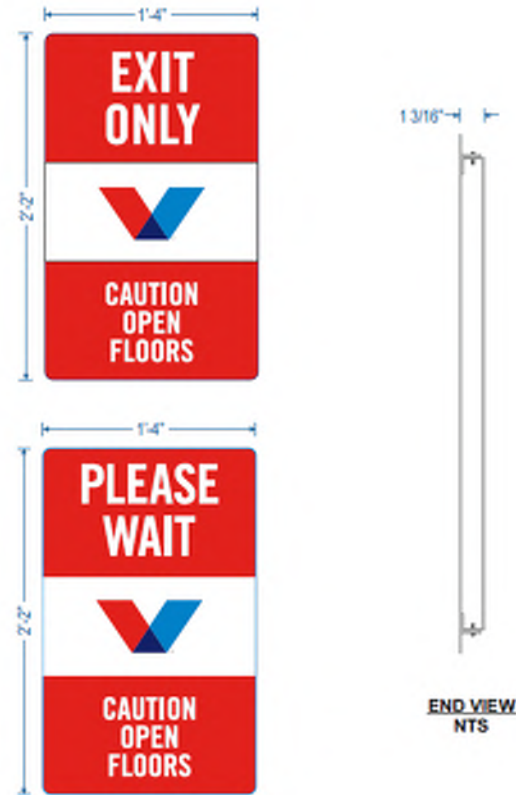


(E 2nd) Franklin, OH

BETWEEN BAY SIGNS Not-Illuminated

Between Bay Sign Specifications:

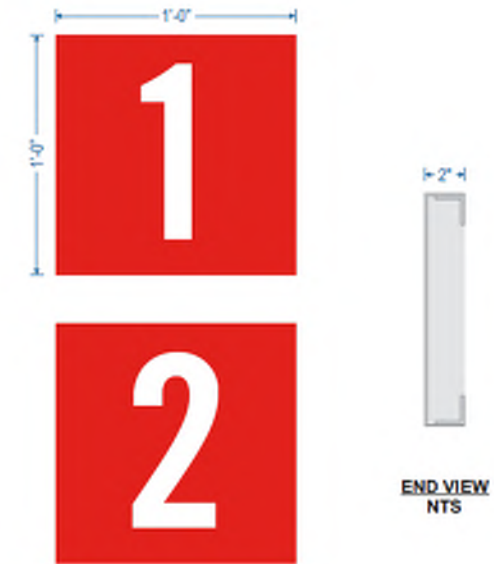
- Face Material: .080" aluminum
- Face Decoration: digitally printed decal (1st surface)
- Mounting: 1" aluminum angle glued to back of face with bent-up .080" aluminum mounting bracket



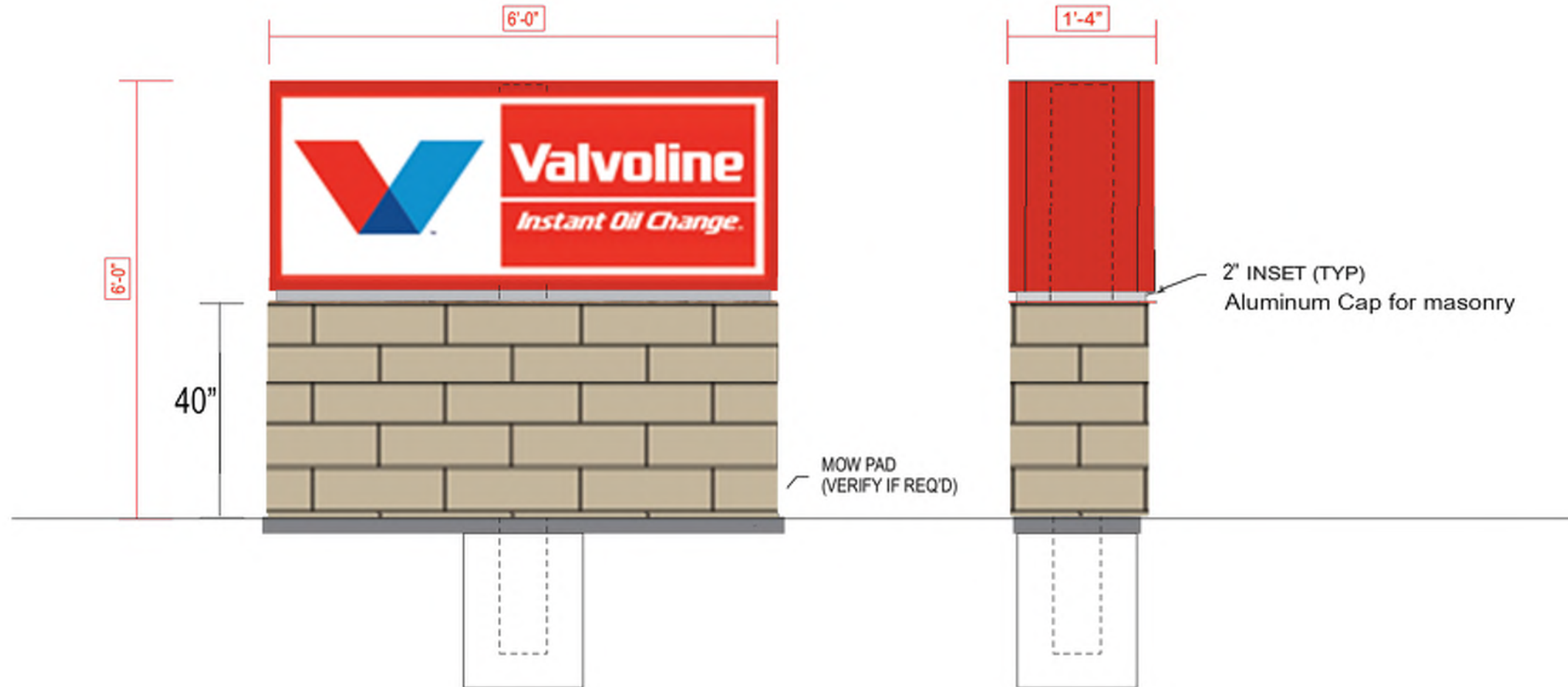
BAY INDICATOR SIGNS Not-Illuminated

Bay Indicator Sign Specifications:

- Face Material: shoebox .080" aluminum painted Akzo Nobel Valvoline red, gloss finish
- Face Decoration (1st surface):
 - 3M 3635-20B white blackout film
- Mounting: 1 1/2" X 1 1/2" X 3/16" aluminum angle wall mounting frame, face fastened on top and bottom with countersunk screws



Masonry by GC/to Match Building
Foundation Design and Permit By Sign Company



COLOR SPECIFICATIONS					
	VINYL: 3M 3630-337 Process Blue PAINT: N/A PANTONE: Process Blue C		VINYL: Avery Red PAINT: Akzo Nobel 337 Red PANTONE: PMS 485 C		VINYL: 3M 3630-20 White PAINT: Akzo Nobel SIGN10150 White PANTONE: N/A
	VINYL: 3M 3630-137 Blue PAINT: N/A PANTONE: PMS 280 C		VINYL: 3M 3630-121 Silver PAINT: Akzo Nobel Brushed Alum. PANTONE: N/A		



(E 2nd) Franklin, OH