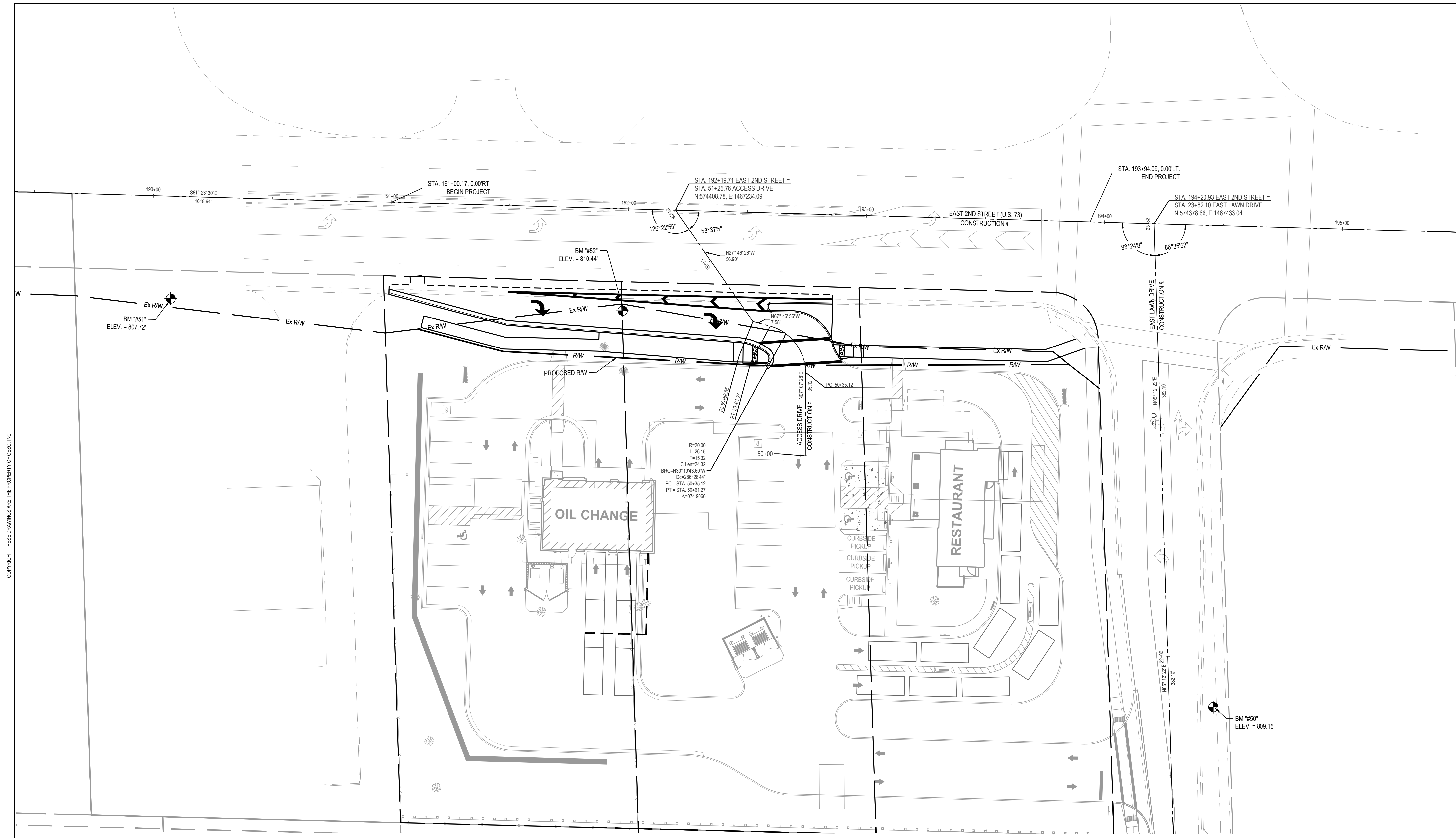


CALCULATED
BAG
CHECKED
PJD

SCHEMATIC PLAN
EAST 2ND STREET (U.S. 73)

EAST 2ND ST ROADWAY IMPROVEMENTS
FRANKLIN, OH

R2
R12



COPYRIGHT: THESE DRAWINGS ARE THE PROPERTY OF CESO, INC.

BENCHMARKS	
BM "50"	Bench tie set in side of a power pole located on the east side of East Lawn Drive. It is the 3rd pole south of the intersection of S.R. 73 and East Lawn Drive. ELEVATION = 809.15' (NAVD 88)
BM "51"	Cross notch set on south bolt of fire hydrant. Located on the south side of S.R. 73 in front of the Napa Auto Parts. ELEVATION = 807.72' (NAVD 88)
BM "52"	Bench tie set on south side of a power pole located on the south side of S.R. 73. It is the second pole west of the intersection of S.R. 73 and East Lawn Drive. ELEVATION = 810.44' (NAVD 88)

BENCHMARK NOTES:
REFER TO ORIGINAL SURVEY CONDUCTED BY CESO, INC. DATED 01/27/2026 FOR ALL BENCHMARK LOCATIONS AND ADDITIONAL DATUM NOTES.

HORIZONTAL DATUM: US STATE PLANE, NAD83, OHIO SOUTH ZONE (2011)

VERTICAL DATUM: NAVD88 derived from GPS Observations

BASIS OF BEARINGS:
NAD 83 (2011), OHIO SOUTH, Derived from GPS Observations

SPECIFICATIONS AND STANDARD CONSTRUCTION DRAWINGS
THE STATE OF OHIO DEPARTMENT OF TRANSPORTATION, 2023 CONSTRUCTION AND MATERIALS SPECIFICATIONS, AND THE NOTED STANDARD CONSTRUCTION DRAWINGS SHALL GOVERN THIS IMPROVEMENT. WHEREVER THE WORD "STATE" OCCURS, IT IS TO MEAN THE OHIO DEPARTMENT OF TRANSPORTATION (ODOT).

WHENEVER THE WORD "ENGINEER" OR "DEPARTMENT" IS USED HEREIN, IT SHALL BE HELD TO MEAN THE ODOT PROJECT ENGINEER, OR DULY AUTHORIZED AUTHORITY.

EXISTING SURVEY MONUMENTS
EXISTING SURVEY MONUMENTS, INCLUDING BUT NOT LIMITED TO PROPERTY CORNERS, CENTERLINE MONUMENTS, RIGHT-OF-WAY MONUMENTS, ETC., MAY POTENTIALLY BE DISTURBED OR DESTROYED BY CONSTRUCTION OF THESE ROADWAY IMPROVEMENTS. THE CONTRACTOR SHALL RETAIN A PROFESSIONAL SURVEYOR, LICENSED IN THE STATE OF OHIO, TO IDENTIFY MONUMENTS THAT MAY BE DISTURBED AND TO PROPERLY REPLACE DISTURBED MONUMENTS IN-KIND AFTER CONSTRUCTION IS COMPLETE.

PERMITS FEES AND NOTICES
THE CONTRACTOR SHALL OBTAIN, AT HIS EXPENSE, ANY AND ALL PERMITS AND INSPECTIONS REQUIRED FOR THE PROSECUTION OF THE WORK BY LOCAL LAWS, ORDINANCES, RULES AND REGULATIONS.

MATERIALS AND WORKMANSHIP
UNLESS OTHERWISE SPECIFIED, ALL MATERIALS SHALL BE NEW AND BOTH WORKMANSHIP AND MATERIALS SHALL BE OF THE FIRST QUALITY, PROPER AND SUFFICIENT FOR THE PURPOSE CONTEMPLATED. THE CONTRACTOR SHALL FURNISH, IF SO REQUIRED, SATISFACTORY EVIDENCE AS TO THE KIND AND QUALITY OF MATERIALS AND WORKMANSHIP. ALL ITEMS OF EQUIPMENT AND/OR MATERIALS PROPOSED FOR SUBSTITUTION MUST BE APPROVED BY THE ENGINEER IN WRITING AND SHALL BE EQUAL OR BE SUPERIOR TO THE ITEMS SPECIFIED IN THE CONTRACT DOCUMENTS. IF SAID SUBSTITUTION PROPOSED BY THE CONTRACTOR FOR A SPECIFIED ITEM REQUIRED ENGINEERING REVISIONS, THE EXPENSE OF SUCH REVISIONS SHALL BE PAID FOR BY THE CONTRACTOR AT NO ADDITIONAL COST TO THE OWNER.

EXISTING FACILITIES
IT SHALL BE THE RESPONSIBILITY OF THE CONTRACTOR TO PERFORM HIS WORK IN SUCH A MANNER AS NOT TO DAMAGE OR DESTROY ANY EXISTING FACILITY. IF ANY SUCH DAMAGE DOES OCCUR DUE TO THE CONTRACTOR'S OPERATIONS, HE SHALL REPLACE THE DAMAGED PORTION AT HIS EXPENSE AND TO THE SATISFACTION OF THE ENGINEER.

EXAMINATION OF THE SITE
THE CONTRACTOR SHALL CAREFULLY EXAMINE THE SITE OF THE PROPOSED WORK, THE PLANS AND SPECIFICATIONS. THE SUBMISSION OF A BID SHALL BE CONSIDERED EVIDENCE THAT THE CONTRACTOR HAS MADE SUCH EXAMINATION AND IS SATISFIED AS TO THE CONDITIONS TO BE ENCOUNTERED IN PERFORMING THE WORK IN ACCORDANCE WITH THE PLANS AND SPECIFICATIONS.

WORK LIMITS
THE WORK LIMITS SHOWN ON THESE PLANS ARE FOR PHYSICAL CONSTRUCTION ONLY. THE INSTALLATION AND OPERATION OF ALL TEMPORARY TRAFFIC CONTROL AND TEMPORARY TRAFFIC CONTROL DEVICES REQUIRED BY THESE PLANS SHALL BE PROVIDED BY THE CONTRACTOR WHETHER INSIDE OR OUTSIDE THESE WORK LIMITS.

RELOCATION OF UTILITIES
ALL UTILITIES WHICH ARE SHOWN OR LOCATED DURING THE COURSE OF CONSTRUCTION THAT ARE FOUND TO BE IN CONFLICT WITH THESE PLANS ARE TO BE RELOCATED OR ADJUSTED BY THE OWNER OF THE UTILITY. CONTRACTOR MUST COORDINATE WITH UTILITY OWNER FOR RELOCATION/ADJUSTMENT.

UNDERGROUND UTILITIES
THE LOCATIONS OF THE UNDERGROUND UTILITIES SHOWN ON THE PLAN AREAS OBTAINED FROM THE OWNERS OF THE UTILITIES. THE SURVEYOR MAKES NO GUARANTEE THAT THE UTILITIES LOCATED HEREON COMPROMISE ALL SUCH UTILITIES IN THE AREA, EITHER IN SERVICE OR ABANDONED. THE SURVEYOR FURTHER DOES NOT WARRANT THAT THE UTILITIES LOCATED ARE IN THE EXACT LOCATION INDICATED ALTHOUGH HE/SHE DOES CERTIFY THAT THEY ARE LOCATED AS ACCURATELY AS POSSIBLE FROM INFORMATION AVAILABLE.

SEEDING AND MULCHING
SEEDING AND MULCHING SHALL BE APPLIED TO ALL AREAS OF EXPOSED SOIL BETWEEN THE RIGHT-OF-WAY LINES. AND WITHIN THE CONSTRUCTION LIMITS FOR AREAS OUTSIDE THE RIGHT -OF-WAY LINES COVERED BY WORK AGREEMENT OR SLOPE EASEMENT.

WEATHER CONDITIONS
NO CONSTRUCTION SHALL BE DONE DURING STORMY, FREEZING OR INCLEMENT WEATHER UNLESS PERMISSION IS GIVEN BY THE ENGINEER WHENEVER WORK PROCEEDS DURING SUCH WEATHER, THE CONTRACTOR SHALL PROVIDE APPROVED FACILITIES, INCLUDING HEAT (IF REQUIRED), FOR THE PROTECTION OF ALL MATERIALS AND FINISHED WORK.

AGENCY NOTIFICATIONS
CONTRACTOR TO NOTIFY LOCAL EMERGENCY SERVICE PROVIDERS, UNITED STATES POSTAL SERVICE, LOCAL SCHOOL DISTRICTS PRIOR TO START OF CONSTRUCTION.

COOPERATION WITH UTILITY COMPANIES
WHILE THE WORK OF THIS CONTRACT IS BEING PERFORMED, THE UTILITY COMPANIES MAY BE WORKING IN THE AREA ADJUSTING AND RESETTING EXISTING FACILITIES. THE CONTRACTOR SHALL FULLY COOPERATE WITH UTILITY COMPANIES SO THAT THE ENTIRE WORK IS COMPLETED IN A MANNER CONSISTENT WITH GOOD CONSTRUCTION PRACTICES. THE CONTRACTOR, UTILITIES, AND ENGINEER SHALL DISCUSS THE NECESSARY CONSTRUCTION SCHEDULES TO COMPLETE THE PROJECT.

CROSSINGS TO EXISTING PIPES AND UTILITIES
WHERE PLANS PROVIDE FOR A PROPOSED CONDUIT TO CROSS OVER OR UNDER AN EXISTING SEWER OR UNDERGROUND UTILITY, THE CONTRACTOR SHALL LOCATE THE EXISTING PIPES OR UTILITIES BOTH AS TO LINE AND GRADE BEFORE STARTING THE PROPOSED CONDUIT.

UTILITY COORDINATION
THE FOLLOWING IS A LIST OF THE KNOWN EXISTING UTILITIES IN THE PROJECT AREA ALONG WITH THE RESPECTIVE OWNERS. THE LIST IS INCLUDED FOR INFORMATIONAL PURPOSES ONLY. THE CONTRACTOR IS RESPONSIBLE FOR CONTACTING ALL UTILITY OWNERS IN THE PROJECT AREA PRIOR TO START OF CONSTRUCTION WHETHER LISTED ON THIS PAGE OR NOT.

ELECTRIC
DUKE ENERGY
PH: (877) 700-3853

GAS
DUKE ENERGY
PH: (877) 700-3853

COMMUNICATIONS
CINCINNATI BELL
PH: (513) 566-5254

STORMWATER
CITY OF FRANKLIN
PH: (937) 746-5001
CONTACT: STEVE INMAN
EMAIL: SINMAN@FRANKLINOHIO.ORG

WATER
CITY OF FRANKLIN
PH: (937) 746-5001
CONTACT: NICK MILLER
EMAIL: NMILLER@FRANKLINOHIO.ORG

ZONING
CITY OF FRANKLIN
PH: (937) 746-9921 EX. 1401
CONTACT: ERIC DAMIAN
EMAIL: EDAMIAN@FRANKLINOHIO.ORG

UTILITIES NOTIFICATION
AT LEAST TWO WORKING DAYS PRIOR TO COMMENCING CONSTRUCTION OPERATIONS IN AN AREA WHICH MAY INVOLVE UNDERGROUND UTILITY FACILITIES, THE CONTRACTOR SHALL NOTIFY THE ENGINEER, THE REGISTERED UTILITY PROTECTION SERVICE AND THE OWNERS OF EACH UNDERGROUND UTILITY FACILITY SHOWN ON THE PLAN.

THE OWNER OF THE UNDERGROUND FACILITY SHALL, WITHIN 48 HOURS (EXCLUDING SATURDAYS, SUNDAYS AND LEGAL HOLIDAYS), MARK THE LOCATION OF THE UNDERGROUND UTILITY FACILITIES IN THE CONSTRUCTION AREA IN SUCH A MANNER AS TO INDICATE THEIR COURSE AND THE APPROXIMATE DEPTH AT WHICH THEY WERE INSTALLED. THE MARKING OR LOCATING SHALL BE COORDINATED TO STAY APPROXIMATELY TWO DAYS AHEAD OF THE PLANNED CONSTRUCTION.

TEMPORARY TRAFFIC CONTROL
IT IS ESSENTIAL THAT THE ENGINEER HAVE THE AUTHORITY TO CONTROL THE PROGRESS OF THE WORK ON THE PROJECT IN ITS RELATION TO OBTAINING SAFE CONDITIONS. THIS INCLUDES THE AUTHORITY TO MODIFY CONDITIONS OR HALT WORK UNTIL APPLICABLE OR REMEDIAL SAFETY MEASURES ARE TAKEN. THE CONTRACTOR IS TO SUPPLY ALL TRAFFIC CONTROL, AS THE ENGINEER DEEMS NECESSARY. ALL TRAFFIC CONTROL DEVICES SHALL CONFORM TO THE APPLICABLE SPECIFICATIONS OF THE OHIO MANUAL OF UNIFORM TRAFFIC CONTROL DEVICES.

ALL WORK AND TRAFFIC CONTROL DEVICES SHALL BE IN ACCORDANCE WITH SECTION 614 OF THE ODOT STANDARD SPECIFICATIONS AND OTHER APPLICABLE PORTIONS OF THE ODOT SPECIFICATIONS, AS WELL AS THE OHIO MANUAL OF UNIFORM TRAFFIC CONTROL DEVICES.

RESTORATION
THE CONTRACTOR SHALL PROVIDE FOR PROTECTION OF THE FOLLOWING:

EXISTING STREETS, DRIVEWAYS, SIDEWALKS, CURBS, GUTTERS, RE-SEEDING/RE-SODDING, REMOVAL OF TREES, RESTORATION OF AGRICULTURAL LAND, THE MAINTENANCE OF THE CONSTRUCTION AREA DURING PROGRESS OF THE WORK AND THE COMPLETE RESTORATION OF THE CONSTRUCTION AREA TO ITS ORIGINAL CONDITION AT THE COMPLETION OF THE WORK. THE CONTRACTOR SHALL CONTINUOUSLY CARRY ON WITH THE FINAL RESTORATION OF THE CONSTRUCTION AREA AFTER THE BACKFILLING IS COMPLETED, AND HE SHALL PROCEED TO RESTORE TO ITS ORIGINAL CONDITION ALL STREETS, DRIVEWAYS, SIDEWALKS, CURBS, GUTTERS, STRUCTURES, AND ALL AREAS THAT WERE DAMAGED, DISTURBED, OR OCCUPIED BY THE CONTRACTOR IN CONNECTION WITH ANY PHASE OF THE WORK.

PAVEMENTS, PAVEMENT MARKINGS, TREES, SHRUBS, FENCES, POLES, OR OTHER PROPERTY AND SURFACE STRUCTURES WHICH HAVE BEEN DAMAGED, REMOVED, OR DISTURBED BY THE CONTRACTOR, WHETHER DELIBERATELY OR THROUGH FAILURE TO CARRY OUT THE REQUIREMENTS OF THE CONTRACT DOCUMENTS, STATE LAWS, MUNICIPAL ORDINANCES, THE SPECIFIC DIRECTION OF THE ENGINEER, OR THROUGH FAILURE TO EMPLOY USUAL AND REASONABLE SAFEGUARDS SHALL BE REPLACED AT THE EXPENSE OF THE CONTRACTOR.

ALL TEMPORARY SIGNS, SPRINKLER SYSTEMS, LANDSCAPING, ORNAMENTAL FENCING, ETC., LOCATED WITHIN THE PROJECT LIMITS MUST BE REPLACED OR RELOCATED UPON COMPLETION OF THE CONSTRUCTION

ITEM 832: EROSION CONTROL
ALL EROSION AND SEDIMENTATION CONTROL SHALL BE PERFORMED ACCORDING TO: DETAIL PLANS; ACCORDING TO THE LATEST OHIO EPA AUTHORIZATION FOR CONSTRUCTION ACTIVITY UNDER THE "NATIONAL POLLUTANT DISCHARGE ELIMINATION SYSTEM" (NPDES); ANY AND ALL REQUIRED PERMITS, REPORTS, AND RELATED DOCUMENTS. SEE OHIO EPA PERMIT NO. OHR000006 FOR REGULATIONS. ALL CONTRACTORS AND SUBCONTRACTORS MUST BECOME FAMILIAR WITH ALL OF THE ABOVE. ADDITIONAL EROSION CONTROL MEASURES MAY BE REQUIRED IN THE FIELD BY THE INSPECTOR.

THE CONTRACTOR IS RESPONSIBLE FOR ALL EROSION CONTROL MEASURES THAT ARE USED FOR WATER QUALITY. THE EROSION AND SEDIMENTATION CONTROL FACILITIES SHOWN ON THESE PLANS ARE TO BE CONSIDERED ADEQUATE BASIC REQUIREMENTS FOR THE ANTICIPATED SITE CONDITIONS. DURING CONSTRUCTION, DEVIATIONS FROM THIS PLAN MAY BE NECESSARY IN ORDER TO MAINTAIN WATER QUALITY.

THE CONTRACTOR SHALL ADHERE TO ODOT'S SUPPLEMENT SPECIFICATION 832 FOR EROSION AND SEDIMENTATION CONTROL.

ACCESS TO PRIVATE PROPERTY
ACCESS TO DRIVES SHALL BE MAINTAINED VIA EXISTING PAVEMENT, TEMPORARY PAVEMENT IN THE EVENT THAT A DRIVE CANNOT BE MAINTAINED AND A CLOSURE IS NEEDED THE CONTRACTOR WILL COORDINATE WITH PROPERTY OWNER TO MINIMIZE THE IMPACT TO THE OWNER.

COMMERCIAL PROPERTY WITH MULTIPLE DRIVES MAY HAVE ONE DRIVE CLOSED WHEN WORKING IN THE AREA OF THE DRIVE, COMMERCIAL PROPERTY WITH ONLY ONE DRIVEWAY OR DRIVEWAY WITH ONE DIRECTION TRAFFIC USE WILL BE CONSTRUCTED PART WIDTH. THE CONTRACTOR WILL COORDINATE WITH THE PROPERTY OWNER TO MINIMIZE THE IMPACT TO THE OWNER.

MAINTAIN ACCESS TO RESIDENTIAL PROPERTIES AT ALL TIMES. WHEN A RESIDENTIAL DRIVE IS CLOSED FOR CONSTRUCTION, MAINTAIN ALTERNATE ACCESS TO THE PROPERTY. IT MAY BE REQUIRED FOR THE CONTRACTOR TO MAINTAIN ONE PASSABLE LANE WITHIN A CLOSURE IN ORDER FOR VEHICLES TO ACCESS RESIDENCE WITH A VEHICLE.

UNLESS CALLED OUT IN THE PLANS THE CONTRACTOR WILL COORDINATED ANY CLOSURES WITH PROPERTY OWNERS AND BE RESPONSIBLE FOR ANY AND ALL PROPERTY USE AGREEMENTS FOR ALTERNATIVE ACCESS.

SUCCESSFULLY NOTIFY THE OCCUPANTS/OWNERS OF COMMERCIAL OR RESIDENTIAL DRIVES TO BE CLOSED AND COORDINATE THE CLOSURES AT LEAST 48 HOURS BEFORE THE CLOSURE BEGINS (SIMPLY LEAVING A WRITTEN NOTICE OR PHONE MESSAGE IS NOT SUFFICIENT). COORDINATE ALTERNATE ACCESS TO RESIDENTIAL PROPERTIES WITH THE OWNER/OCCUPANT.

PAYMENT FOR ALL LABOR, EQUIPMENT, LAW ENFORCEMENT OFFICERS, AND MATERIALS SHALL BE INCLUDED IN THE LUMP SUM CONTRACT PRICE FOR ITEM 614, MAINTAINING TRAFFIC UNLESS ITEMIZED SEPARATELY.

COPYRIGHT, THESE DRAWINGS ARE THE PROPERTY OF CESO, INC.

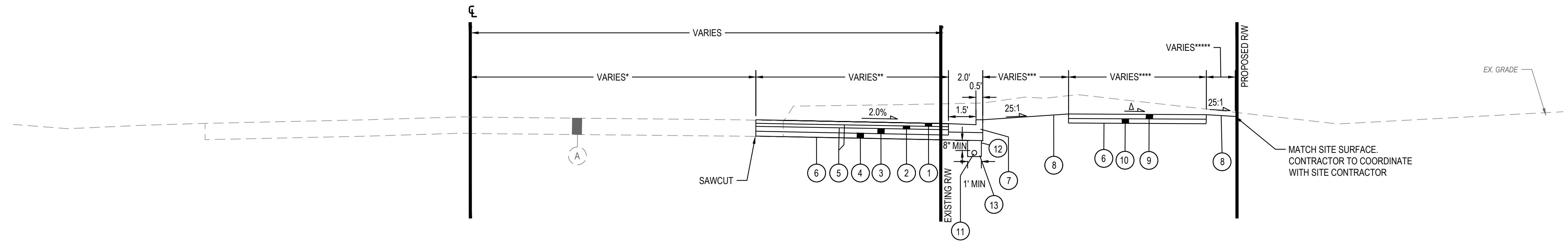
CALCULATED
BAG
CHECKED
P.I.D.

GENERAL NOTES
EAST 2ND STREET (U.S. 73)

EAST 2ND ST ROADWAY IMPROVEMENTS
FRANKLIN, OH

R3
R12

COPYRIGHT, THESE DRAWINGS ARE THE PROPERTY OF CESCO, INC.



TYPICAL SECTION - EAST 2ND STREET (U.S. 73)
STA. 191+00.16 TO STA. 192+86.74
NTS.

- △ VARIES SEE CROSS SECTIONS, 2% MAX CROSS SLOPE TYP.
- * VARIES 34.50' TO 33.51' FROM STA. 191+00.16 TO STA. 192+86.74
SEE PLAN AND PROFILE FOR SAWCUT DETAILS.
- ** VARIES 2 TO 14.01' FROM STA. 191+00.16 TO STA. 191+50.10.
VARIES 14.01' TO 18.99' FROM STA. 191+50.10 TO STA. 192+47.66.
INTERSECTION REGION BETWEEN STA. 192+47.66 AND STA. 192+86.74. SEE INTERSECTION DETAIL ON SHEET R11.
- *** 5' FROM STA. 191+00.16 TO STA. 191+49.43.
VARIES 5' TO 3' FROM STA. 191+49.43 TO STA. 191+88.99.
0' FROM STA. 191+88.99 TO STA. 192+47.66.
INTERSECTION REGION BETWEEN STA. 192+47.66 AND STA. 192+60.48. SEE INTERSECTION DETAIL ON SHEET R11.
- **** 5' FROM STA. 191+15.21 TO STA. 191+88.99.
8' FROM STA. 191+88.99 TO STA. 192+60.48.
5' FROM STA. 192+60.48 TO STA. 193+89.67.
INTERSECTION REGION BETWEEN STA. 192+60.48 AND STA. 192+87.02. SEE INTERSECTION DETAIL ON SHEET R11.
- ***** 1' FROM STA. 191+14.08 TO STA. 191+88.99.
0' FROM STA. 191+88.99 TO STA. 192+96.24.
1' FROM STA. 192+96.24 TO STA. 193+75.24.
0' FROM STA. 193+75.24 TO STA. 193+94.09.

NOTE: INTERSECTION BETWEEN STA. 192+47.66 TO STA. 192+86.74. INTERSECTION ASPHALT SECTION TO MATCH ROADWAY ASPHALT SECTION.

TYPICAL SECTION LEGEND

- | | |
|--|--|
| ① ITEM 441 - 1.5" ASPHALT CONCRETE SURFACE COURSE, TYPE 1, (448), PG64-22 | ⑧ ITEM 659 - SEEDING AND MULCHING, CLASS 1 |
| ② ITEM 441 - 2" ASPHALT CONCRETE INTERMEDIATE COURSE, TYPE 2, (448), PG64-22 | ⑨ ITEM 608 - 4" CONCRETE WALK |
| ③ ITEM 301 - 6" ASPHALT CONCRETE BASE, (449), PG64-22, (2-3" LIFTS) | ⑩ ITEM 304 - 4" AGGREGATE BASE |
| ④ ITEM 304 - 10" CRUSHED AGGREGATE BASE | ⑪ ITEM 605 - 6" RIGID PVC PERFORATED PIPE UNDERDRAIN |
| ⑤ ITEM 407 - NON-TRACKING TACK COAT, 0.10 GAL/SY | ⑫ ITEM SPL - WOVEN GEOTEXTILE, MIRAFI 600X OR EQUIVALENT,
ALL OVERLAPS TO BE 18" - TO BE USED AT ENGINEERS DISCRETION |
| ⑥ ITEM 204 - SUBGRADE COMPACTION | ⑬ ITEM 203 - GRANULAR MATERIAL (INCIDENTAL TO ITEM 605) |
| ⑦ ITEM 609 - CURB (0.5') AND GUTTER (1.5'), TYPE 2 (2' TOTAL) | Ⓐ EXISTING ASPHALT/CONCRETE PAVEMENT SECTION |

CALCULATED
BAG
CHECKED
P.I.D.

TYPICAL SECTIONS
EAST 2ND STREET (U.S. 73)

EAST 2ND ST ROADWAY IMPROVEMENTS
FRANKLIN, OH

R4
R12

MAINTAINING TRAFFIC

THE CONTRACTOR SHALL PROVIDE, ERECT, AND MAINTAIN SIGNS (IN PROPER POSITION, CLEAN AND LEGIBLE, AND IN GOOD WORKING CONDITION) AND PROVIDE ALL LIGHTS, SIGNS, CONES, DRUMS, AND ANY OTHER TRAFFIC CONTROL DEVICES NECESSARY FOR THE MAINTENANCE OF TRAFFIC ACCORDING TO THESE PLAN NOTES AND DETAILS.

NO CHANGES IN TRAFFIC CONTROL PATTERNS SHALL BE MADE BETWEEN THE HOURS OF 6:00 AM TO 9:00 AM AND 4:00 PM TO 7:00 PM, MONDAY THROUGH FRIDAY.

NO WORK SHALL BE PERFORMED ON EAST 2ND STREET AND THE SAME NUMBER OF LANES AS EXISTED BEFORE CONSTRUCTION SHALL BE OPEN TO TRAFFIC DURING THE FOLLOWING DESIGNATED HOLIDAYS AND SPECIAL EVENTS:

HOLIDAYS

- NEW YEAR'S (OBSERVED)
- LABOR DAY
- GENERAL/REGULAR ELECTION DAY (NOV)
- THANKSGIVING
- MEMORIAL DAY
- CHRISTMAS (OBSERVED)
- FOURTH OF JULY (OBSERVED)

THE PERIOD OF TIME THAT THE LANES ARE TO BE OPEN DEPENDS ON THE DAY OF THE WEEK ON WHICH THE HOLIDAY OR SPECIAL EVENT FALLS. THE FOLLOWING SCHEDULE SHALL BE USED TO DETERMINE THIS PERIOD:

DAY OF HOLIDAY OR EVENT: TIME ALL LANES MUST BE OPEN TO TRAFFIC:

SUNDAY	12:00N FRIDAY THROUGH 6:00 AM MONDAY
MONDAY	12:00N FRIDAY THROUGH 6:00 AM TUESDAY
TUESDAY	12:00N MONDAY THROUGH 6:00 AM WEDNESDAY
TUESDAY (GEN./REG. ELECTION)	5:00 AM TUESDAY THROUGH 6:00 AM WEDNESDAY
WEDNESDAY	12:00N TUESDAY THROUGH 6:00 AM THURSDAY
THURSDAY	12:00N WEDNESDAY THROUGH 6:00 AM FRIDAY
(THANKSGIVING ONLY)	6:00 AM WEDNESDAY THROUGH 6:00 AM MONDAY
FRIDAY	12:00N THURSDAY THROUGH 6:00 AM MONDAY
SATURDAY	12:00N FRIDAY THROUGH 6:00 AM MONDAY

NO EXTENSIONS OF TIME SHALL BE GRANTED FOR DELAYS IN MATERIAL DELIVERIES, UNLESS SUCH DELAYS ARE INDUSTRY-WIDE, OR FOR LABOR STRIKES, UNLESS SUCH STRIKES ARE AREA-WIDE.

LENGTH AND DURATION OF LANE CLOSURES AND RESTRICTIONS SHALL BE AT THE APPROVAL OF THE CITY OF FRANKLIN ENGINEER. IT IS THE INTENT TO MINIMIZE THE IMPACT TO THE TRAVELING PUBLIC. LANE CLOSURES OR RESTRICTIONS OVER SEGMENTS OF THE PROJECT IN WHICH NO WORK IS ANTICIPATED WITHIN A REASONABLE TIME FRAME, AS DETERMINED BY THE ENGINEER, SHALL NOT BE PERMITTED. THE LEVEL OF UTILIZATION OF MAINTENANCE OF TRAFFIC DEVICES SHALL BE COMMENSURATE WITH THE WORK IN PROGRESS.

14 DAYS BEFORE THE WORK BEGINS, THE CONTRACTOR SHALL SUBMIT TO THE CITY OF FRANKLIN ENGINEER THE NAMES AND TELEPHONE NUMBERS OF PERSONS WHO CAN BE CONTACTED TWENTY-FOUR (24) HOURS PER DAY BY THE CITY AND ALL INTERESTED POLICE AGENCIES. THIS PERSON OR PERSONS SHALL BE RESPONSIBLE FOR PLACING OR REPLACING NECESSARY TRAFFIC CONTROL DEVICES IN ACCORDANCE WITH THE OHIO MANUAL OF UNIFORM TRAFFIC CONTROL DEVICES.

IT IS THE CONTRACTOR'S RESPONSIBILITY TO MAINTAIN TRAFFIC AT ALL TIMES. IT IS THE INTENTION TO PERFORM THE REQUIRED WORK WITH THE LEAST INCONVENIENCE TO AND THE MAXIMUM SAFETY OF THE WORKERS AND THE TRAVELING PUBLIC OCCASIONALLY, MODIFICATIONS IN TRAFFIC CONTROLS OR WORKING CONDITIONS MAY BE REQUIRED IN ORDER TO EXPEDITE SAFE TRAFFIC MOVEMENT AND TO PROMOTE WORKER SAFETY.

ALL VEHICLES, EQUIPMENT AND WORKERS AND THEIR ACTIVITIES ARE RESTRICTED TO ONE SIDE OF THE PAVEMENT UNLESS OTHERWISE APPROVED BY THE ENGINEER. CONSTRUCTION VEHICLES SHALL ALWAYS MOVE WITH AND NOT AGAINST THE FLOW OF TRAFFIC. CONSTRUCTION VEHICLES AND EQUIPMENT SHALL ENTER AND LEAVE WORK AREAS IN A MANNER WHICH WILL NOT BE HAZARDOUS TO, OR INTERFERE WITH THE NORMAL FLOW OF TRAFFIC. PERSONAL VEHICLES ARE NOT PERMITTED IN THE RIGHT-OF-WAY EXCEPT IN SPECIFIC AREAS DESIGNATED BY THE ENGINEER.

MAINTAINING TRAFFIC (SIGNS AND BARRICADES)

THE CONTRACTOR SHALL PROVIDE, ERECT AND MAINTAIN SIGNS AND SIGN SUPPORTS, AS DETAILED IN THE OHIO MANUAL OF UNIFORM TRAFFIC CONTROL DEVICES, AND TYPE III BARRICADES AT THE LOCATIONS SPECIFIED IN PLANS.

TEMPORARY PAVEMENT WEDGE

TEMPORARY PAVEMENT WEDGES SHALL BE PROVIDED AT ALL TIMES WHERE TRAFFIC IS REQUIRED TO TRAVEL FROM OR ONTO A PAVEMENT SURFACE OF A DIFFERENT ELEVATION. THE MINIMUM SLOPE OF THE TEMPORARY PAVEMENT WEDGE SHALL BE 3:1 ALONG LONGITUDINAL JOINTS AND 120:1 AT TRANSVERSE JOINTS. THESE WEDGES SHALL BE REMOVED PRIOR TO PLACING THE SPECIFIED PAVEMENT COURSE.

TRENCH FOR WIDENING

TRENCH FOR EXCAVATION FOR BASE WIDENING SHALL BE FOR ONLY ONE SIDE OF THE PAVEMENT AT A TIME. THE OPEN TRENCH SHALL BE ADEQUATELY MAINTAINED AND PROTECTED WITH DRUMS OR BARRICADES AT ALL TIMES. PLACEMENT OF PROPOSED SUBBASE AND BASE MATERIAL SHALL FOLLOW CLOSELY AS POSSIBLE BEHIND EXCAVATION OPERATIONS. THE LENGTH OF WIDENING TRENCH WHICH IS OPEN AT ANY ONE TIME SHALL BE HELD TO A MINIMUM AND SHALL AT ALL TIMES BE SUBJECT TO APPROVAL BY THE ENGINEER.

THE CONTRACTOR SHALL ENSURE THAT THE TRENCH FOR WIDENING HAS A VERTICAL DROP OF NO MORE THAN 3.5 INCHES. THE TRENCH CAN BE BACKFILLED BY AN AGGREGATE WEDGE. THE MAXIMUM SLOPE OF THE TEMPORARY AGGREGATE WEDGE SHALL BE 3:1 ALONG THE EXISTING PAVEMENT AND PROTECTED WITH DRUMS AT ALL TIMES.

OVERNIGHT TRENCH CLOSING

THE BASE WIDENING SHALL BE COMPLETED TO A DEPTH OF NO MORE THAN 5 INCHES BELOW THE EXISTING PAVEMENT BY THE END OF EACH WORK DAY. NO TRENCH SHALL BE LEFT OPEN OVERNIGHT EXCEPT FOR A SHORT LENGTH (25 FEET OR LESS) OF A WORK SECTION AT THE END OF THE TRENCH. IN CASE WORK MUST BE SUSPENDED BECAUSE OF INCLEMENT WEATHER OR OTHER REASONS, THE TRENCH FOR THE UNCOMPLETED BASE WIDENING SHALL BE BACKFILLED AT THE DIRECTION OF THE ENGINEER.

CONSTRUCTION SEQUENCE

PHASE ONE:

CONSTRUCT SOUTH WIDENING OF EAST 2ND STREET (U.S. 73) BY CLOSING THE OUTSIDE EASTBOUND THROUGH LANE WHILE MAINTAINING TWO-WAY TRAFFIC AT ALL TIMES. LANES TO BE MINIMUM OF 10'. REFER TO MAINTENANCE OF TRAFFIC PLAN - PHASE ONE - SHEET R6

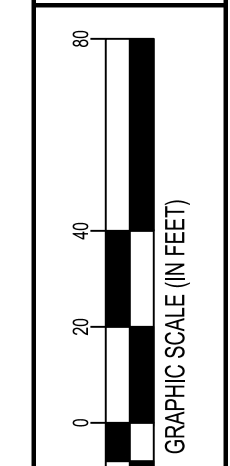
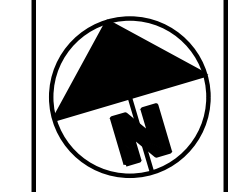
COPYRIGHT, THESE DRAWINGS ARE THE PROPERTY OF CESCO, INC.

CALCULATED	BAG	P.I.D.
	CHECKED	

MAINTENANCE OF TRAFFIC NOTES
EAST 2ND STREET (U.S. 73)

EAST 2ND ST ROADWAY IMPROVEMENTS
FRANKLIN, OH

R5
R12

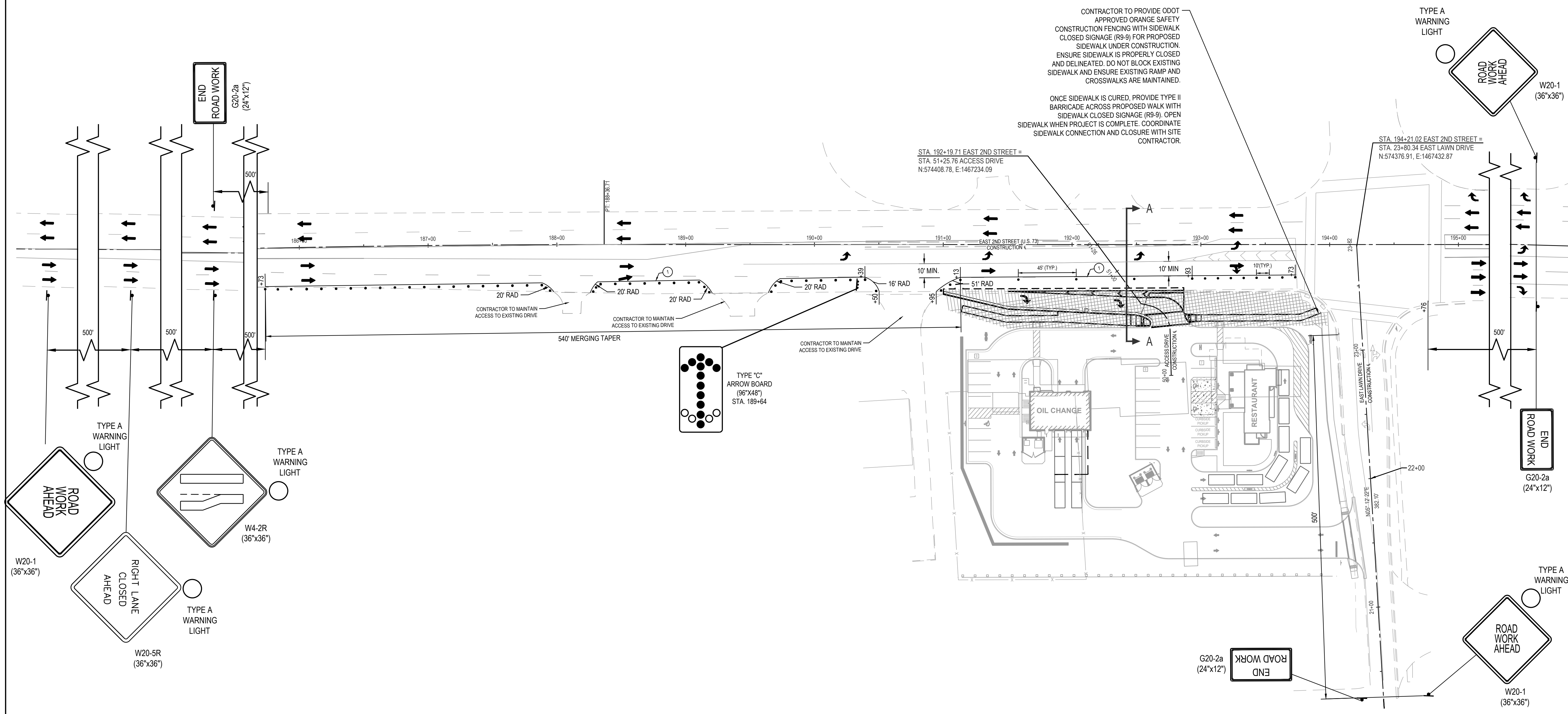


CALCULATED
BAG
CHECKED
P.I.D.

MAINTENANCE OF TRAFFIC PLAN - PHASE ONE
EAST 2ND STREET (U.S. 73)

EAST 2ND ST ROADWAY IMPROVEMENTS
FRANKLIN, OH

R6
R12

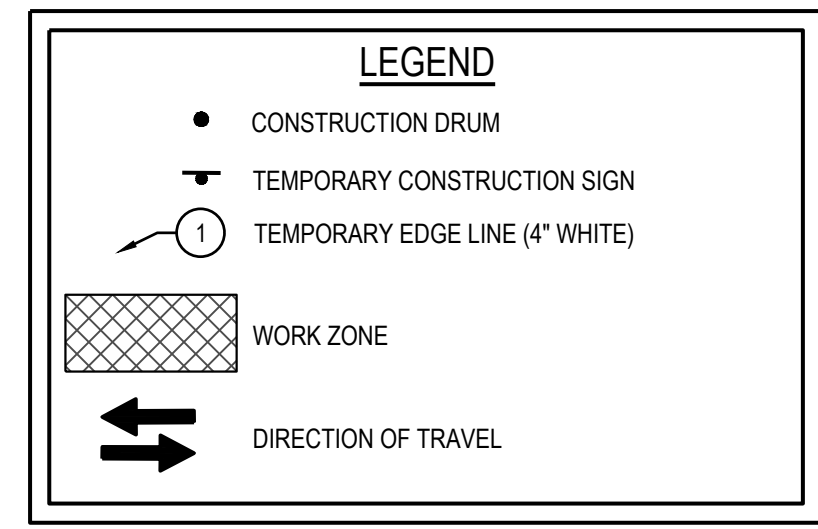
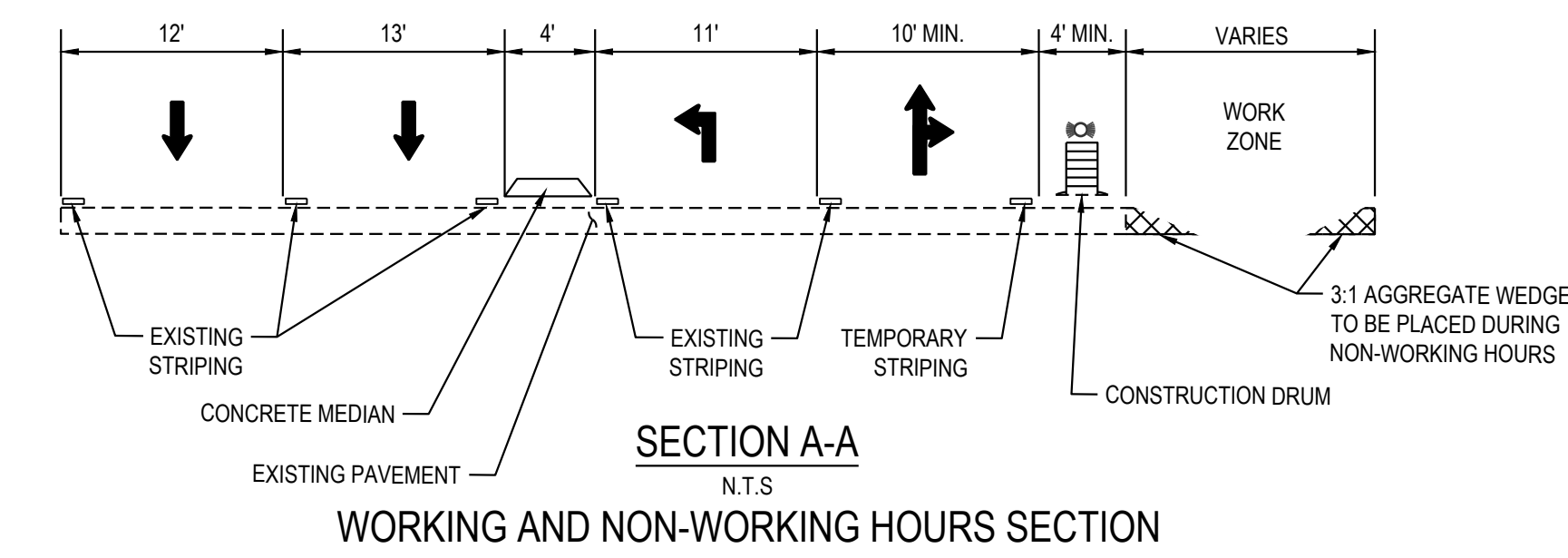
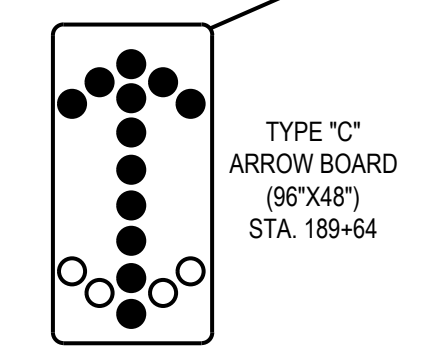


CONTRACTOR TO PROVIDE ODOT APPROVED ORANGE SAFETY CONSTRUCTION FENCING WITH SIDEWALK CLOSED SIGNAGE (R9-9) FOR PROPOSED SIDEWALK UNDER CONSTRUCTION. ENSURE SIDEWALK IS PROPERLY CLOSED AND DELINEATED. DO NOT BLOCK EXISTING SIDEWALK AND ENSURE EXISTING RAMP AND CROSSWALKS ARE MAINTAINED.

ONCE SIDEWALK IS CURED, PROVIDE TYPE II BARRICADE ACROSS PROPOSED WALK WITH SIDEWALK CLOSED SIGNAGE (R9-9). OPEN SIDEWALK WHEN PROJECT IS COMPLETE. COORDINATE SIDEWALK CONNECTION AND CLOSURE WITH SITE CONTRACTOR.

STA. 192+19.71 EAST 2ND STREET = STA. 51+25.76 ACCESS DRIVE N:574408.78, E:1467234.09

STA. 194+21.02 EAST 2ND STREET = STA. 23+80.34 EAST LAWN DRIVE N:574376.91, E:1467432.87



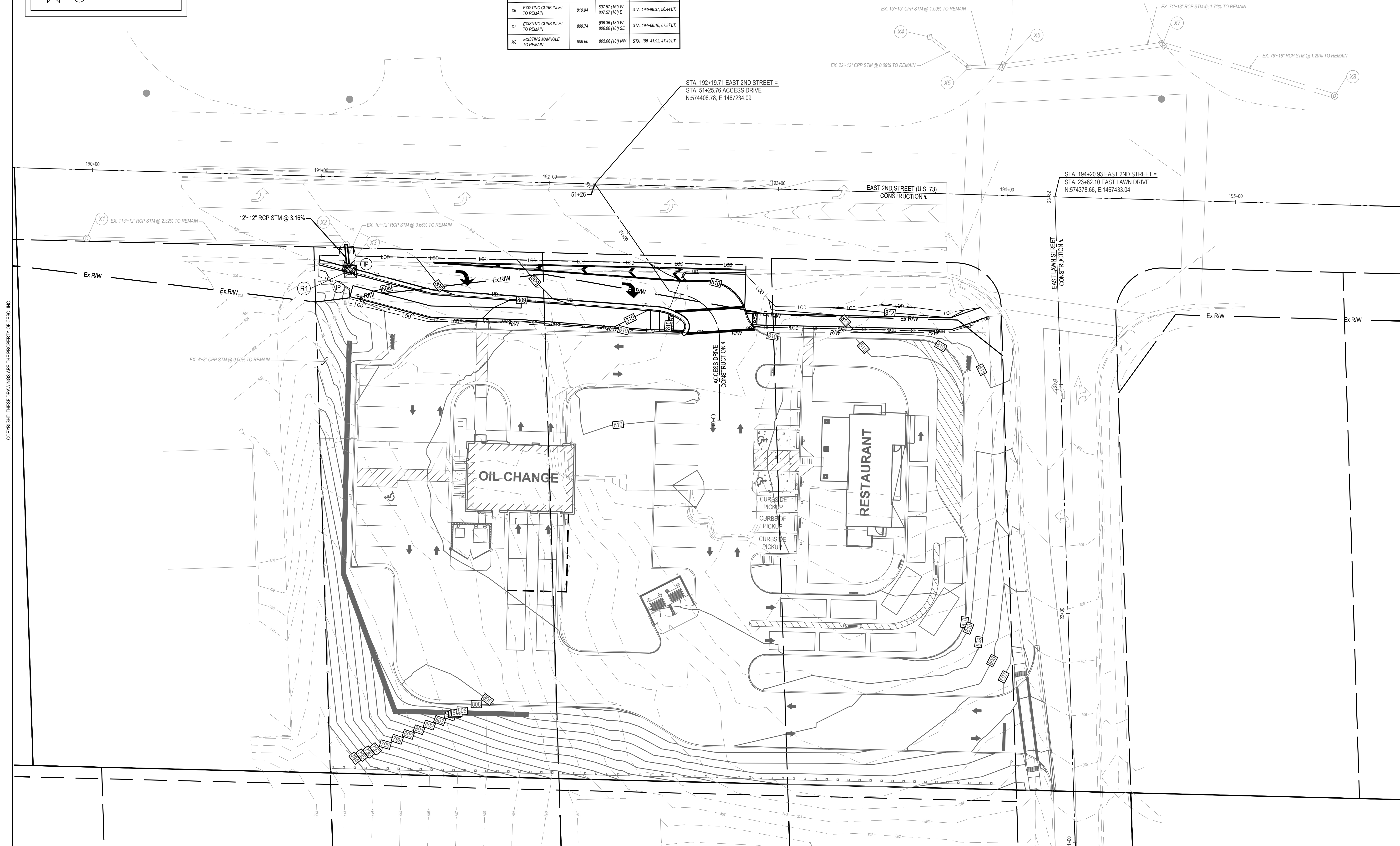
- NOTES:**
1. CONTRACTOR MUST MAINTAIN ACCESS TO ALL DRIVES WITHIN MAINTENANCE OF TRAFFIC LIMITS THROUGH THE DURATION OF CONSTRUCTION. CONTRACTOR TO COORDINATE ACCESS AND CLOSURES WITH PROPERTY OWNERS WITH DRIVEWAYS IMPACTED IN THE CONSTRUCTION ZONE.
 2. ALL TEMPORARY TRAFFIC CONTROL MARKINGS SHALL BE REMOVABLE TAPE.
 3. EXISTING PAVEMENT MARKINGS THAT CONFLICT WITH TEMPORARY TRAFFIC CONTROL MARKINGS OR ARE LABELED TO BE REMOVED SHALL BE COVERED WITH REMOVABLE BLACKOUT TAPE.
 4. TEMPORARILY BAG/COVER EXISTING SIGNS IN WORK ZONE WHEN THEY CONFLICT WITH INTENDED MAINTENANCE OF TRAFFIC PLAN.
 5. STEADY BURNING TYPE A WARNING LIGHTS SHOWN ON THE ADVANCE WARNING SIGNS ARE ONLY REQUIRED WHENEVER A NIGHT LANE CLOSURE/LANE SHIFT IS NECESSARY.
 6. ALL MATERIAL AND EQUIPMENT SHALL BE REMOVED FROM THE CLOSURE AND THE WORK AREA WHEN NO WORK IS BEING DONE.
 7. ALL TAPERS AND WORK ZONE TRAFFIC CONTROL SHALL COMPLY WITH REQUIREMENTS OUTLINED IN THE OMTCD MANUAL.
 8. ALL TEMPORARY TRAFFIC CONTROL DEVICES AND TEMPORARY PAVEMENT MARKINGS SHALL COMPLY WITH OMTCD MANUAL.

LEGEND	
	EXISTING CONTOURS
	PROPOSED CONTOURS
	SILT FENCE
	LIMITS OF DISTURBANCE
	INLET PROTECTION

- SWPPP NOTES:**
1. CONTRACTOR IS RESPONSIBLE TO MAINTAIN POST-CONSTRUCTION PERMANENT EROSION CONTROL MEASURES UNTIL ADEQUATE RE-VEGETATION AND STABILIZATION ARE ACHIEVED.
 2. CONTRACTOR TO PLACE ADDITIONAL SILT FENCE (PER ODOT STD. SPEC) AS NEEDED IN THE FIELD TO RETAIN ALL SOILS ON THE DISTURBED LAND AND PREVENT RUNOFF INTO THE SURROUNDING STORM WATER SYSTEM.
 3. CONTRACTOR TO PROVIDE EROSION CONTROL MEASURES IN ACCORDANCE WITH THE LATEST VERSION OF THE ODOT STANDARDS AND SPECIFICATIONS.

EXISTING STORM SEWER STRUCTURE SCHEDULE				
NO.	STRUCTURE	GRATERIM	INVERT	STATION/OFFSET
X1	EXISTING MANHOLE TO REMAIN	805.07	799.97 (12') W 799.97 (12') E	STA. 189+98.38, 29.99RT.
X2	EXISTING MANHOLE TO REMAIN	807.65	802.60 (12') W 802.60 (12') S	STA. 191+11.71, 29.44RT.
X3	EXISTING CURB INLET TO BE REMOVED	809.78	802.95 (12') N	STA. 191+13.14, 38.91RT.
X4	EXISTING CATCH BASIN TO REMAIN	811.67	807.82 (12') SE	STA. 193+64.27, 68.31LT.
X5	EXISTING CATCH BASIN TO REMAIN	810.94	807.94 (12') NW 807.79 (15') E	STA. 193+91.72, 55.56LT.
X6	EXISTING CURB INLET TO REMAIN	810.94	807.57 (15') W 807.57 (18') E	STA. 193+96.37, 56.44LT.
X7	EXISTING CURB INLET TO REMAIN	809.74	806.36 (18') W 806.00 (18') SE	STA. 194+66.16, 67.87LT.
X8	EXISTING MANHOLE TO REMAIN	809.60	805.06 (18') NW	STA. 195+41.92, 47.49LT.

STORM SEWER STRUCTURE SCHEDULE				
NO.	STRUCTURE	GRATERIM	INVERT	STATION/OFFSET
R1	ODOT CB-3	807.26	802.97 (12') SE 802.97 (12') N 804.60 (6') SE	STA. 191+13.09, 41.06RT.



COPYRIGHT, THESE DRAWINGS ARE THE PROPERTY OF CESCO, INC.

CALCULATED

BAG

P.I.D.

CHECKED

P.I.D.

R7

R12

EROSION CONTROL PLAN

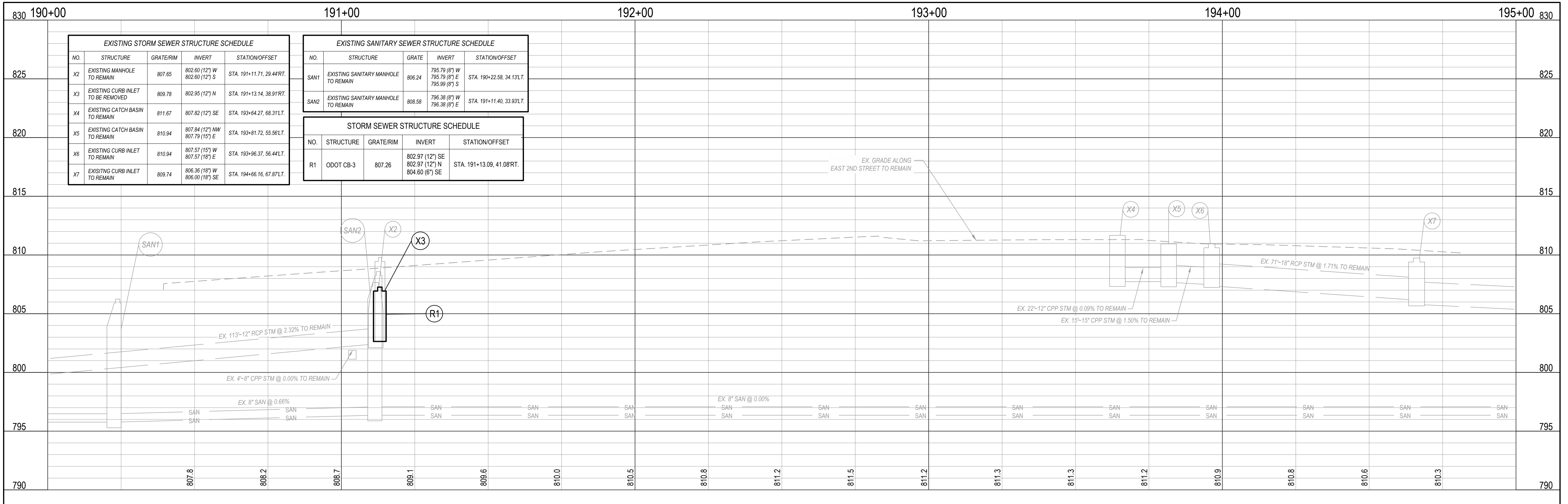
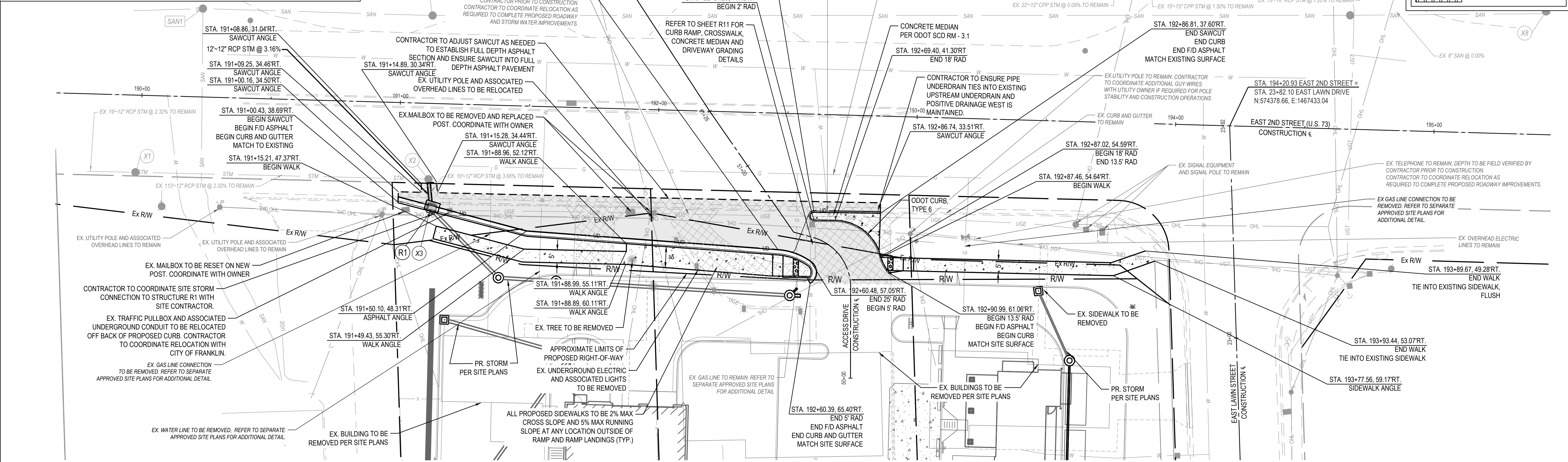
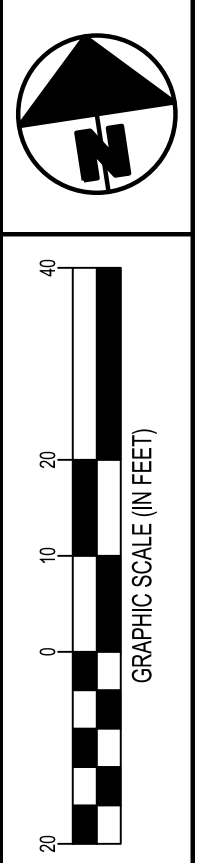
EAST 2ND STREET (U.S. 73)

EAST 2ND ST ROADWAY IMPROVEMENTS
FRANKLIN, OH

- NOTES:**
1. STATION/OFFSET IS MEASURED FROM EDGE OF ASPHALT/CONCRETE UNLESS OTHERWISE NOTED.
 2. THE REALTY LINK SITE IMPROVEMENTS ARE SHOWN FOR REFERENCE ONLY. SEE SITE CONSTRUCTION PLANS FOR DETAILS.
 3. SEE PAVEMENT MARKING AND SIGNAGE SHEET R12 FOR SIGN REMOVALS, RELOCATIONS, AND REPLACEMENTS.
 4. FID DENOTE FULL DEPTH. RAD. DENOTES RADIUS. RADIUS SHOWN IS MEASURED FROM EDGE OF ASPHALT PAVEMENT. EX. DENOTES EXISTING.
 5. CONTRACTOR MUST LOCATE ALL EXISTING UTILITIES IN PROJECT AREA PRIOR TO CONSTRUCTION. UPON LOCATION, IF ANY UTILITY WILL INHIBIT CONSTRUCTION OF PROPOSED ROADWAY IMPROVEMENTS OR BE IMPACTED, CONTRACTOR MUST COORDINATE WITH UTILITY COMPANY FOR RELOCATION AND NOTIFY THE ENGINEER IMMEDIATELY.
 6. REFER TO SHEET R2 FOR CONSTRUCTION CENTERLINE DETAILS.
 7. REFER TO SHEET R11 FOR INTERSECTION GRADING DETAILS.

LEGEND

- ASPHALT PAVEMENT
- REMOVE EXISTING PAVEMENT
- CONCRETE PAVEMENT
- DETECTABLE WARNINGS



EXISTING STORM SEWER STRUCTURE SCHEDULE

NO.	STRUCTURE	GRATE/RIM	INVERT	STATION/OFFSET
X2	EXISTING MANHOLE TO REMAIN	807.65	802.60 (12\"/>	

EXISTING SANITARY SEWER STRUCTURE SCHEDULE

NO.	STRUCTURE	GRATE	INVERT	STATION/OFFSET
SAN1	EXISTING SANITARY MANHOLE TO REMAIN	806.24	785.79 (8\"/>	

STORM SEWER STRUCTURE SCHEDULE

NO.	STRUCTURE	GRATE/RIM	INVERT	STATION/OFFSET
R1	ODOT CB-3	807.26	802.97 (12\"/>	

EAST 2ND STREET PROFILE
Scale: 1" = 20' Horiz.; 1" = 5' Vert.

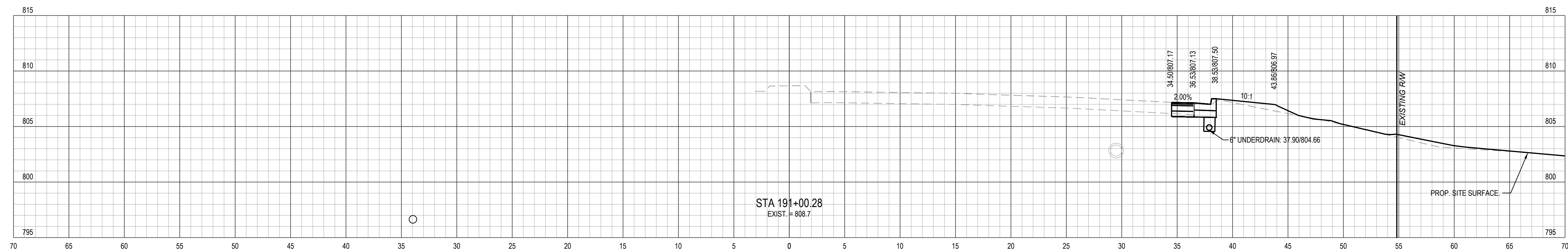
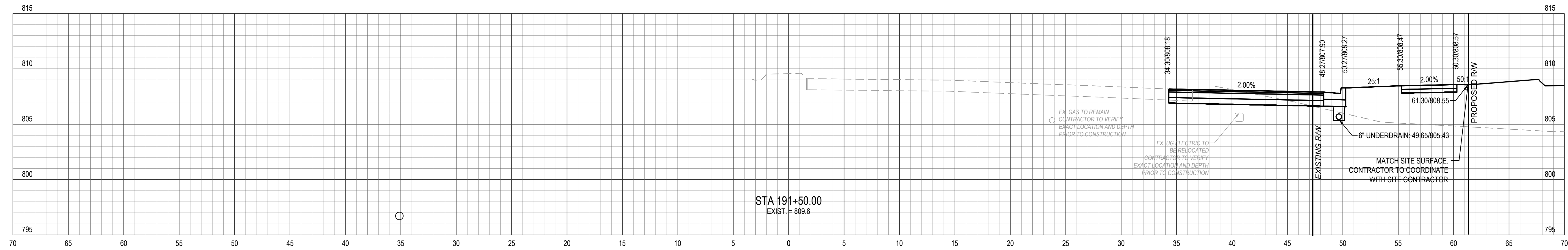
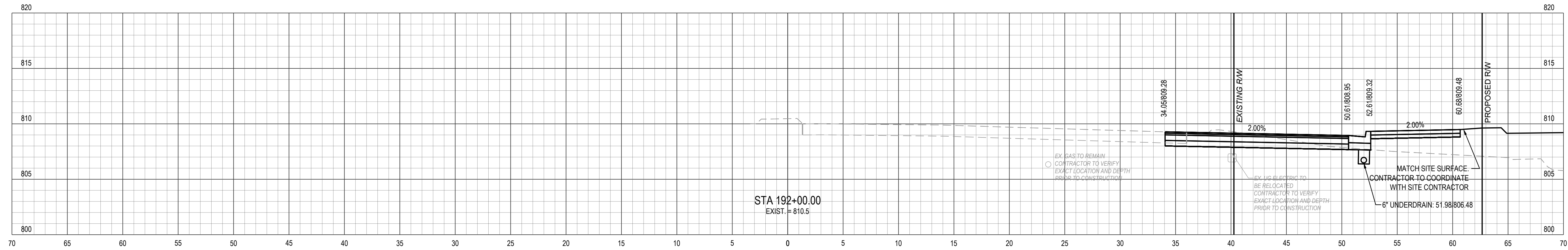
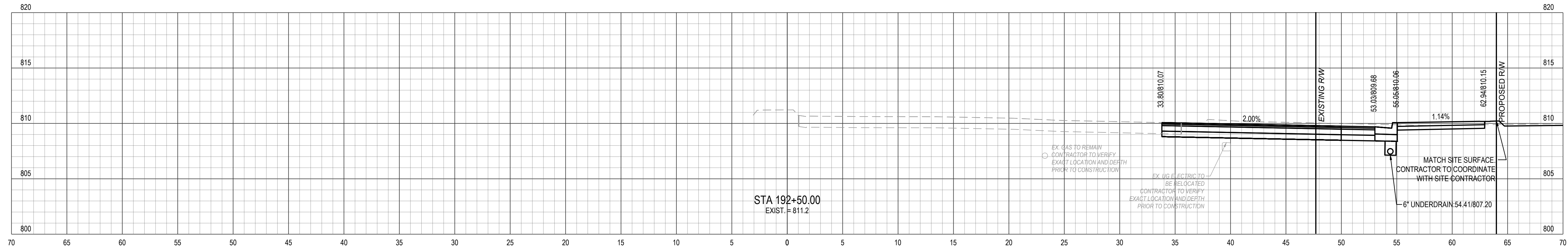
COPYRIGHT, THESE DRAWINGS ARE THE PROPERTY OF CESCO, INC.

CALCULATED
BAG
CHECKED
P.I.D.

PLAN AND PROFILE
EAST 2ND STREET (U.S. 73)

EAST 2ND ST ROADWAY IMPROVEMENTS
FRANKLIN, OH

R8
R12



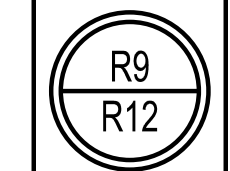
COPYRIGHT, THESE DRAWINGS ARE THE PROPERTY OF CESCO, INC.

CALCULATED
 BAG
 CHECKED
 P.I.D.

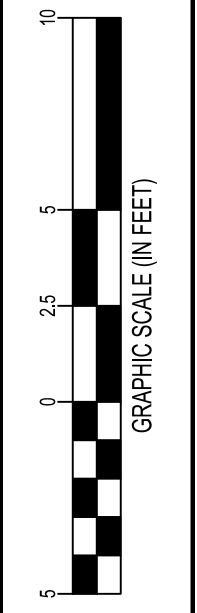
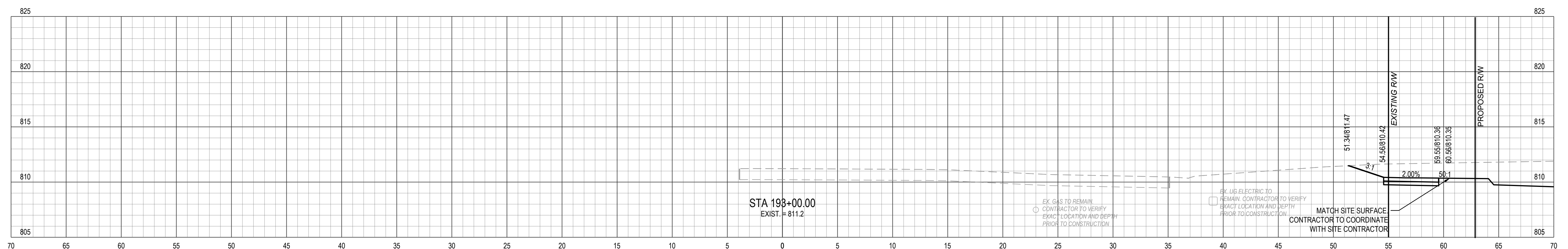
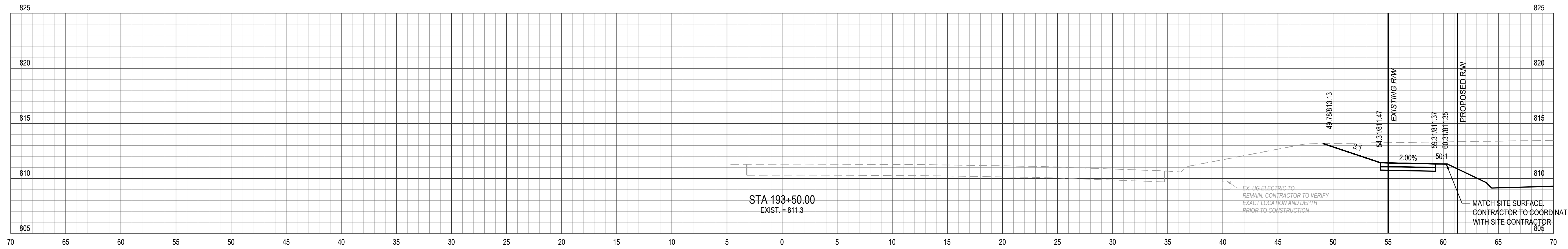
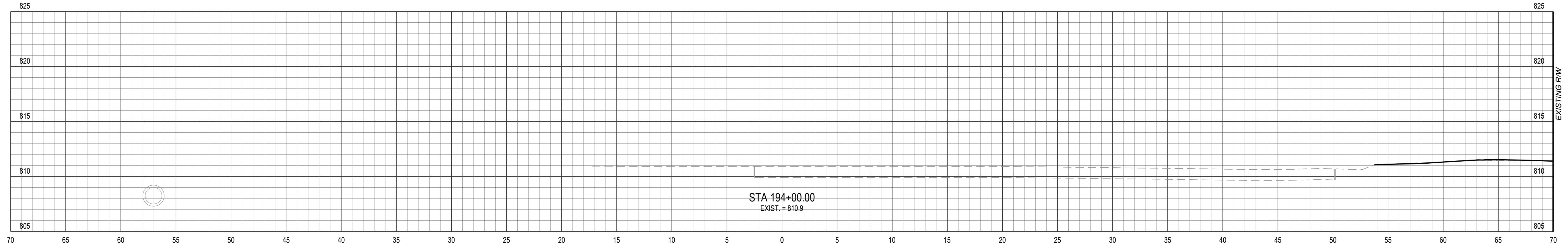
GRAPHIC SCALE (IN FEET)

CROSS SECTIONS - STA. 191+00 TO STA. 192+50
 EAST 2ND STREET (U.S. 73)

EAST 2ND ST ROADWAY IMPROVEMENTS
 FRANKLIN, OH



COPYRIGHT, THESE DRAWINGS ARE THE PROPERTY OF CESCO, INC.



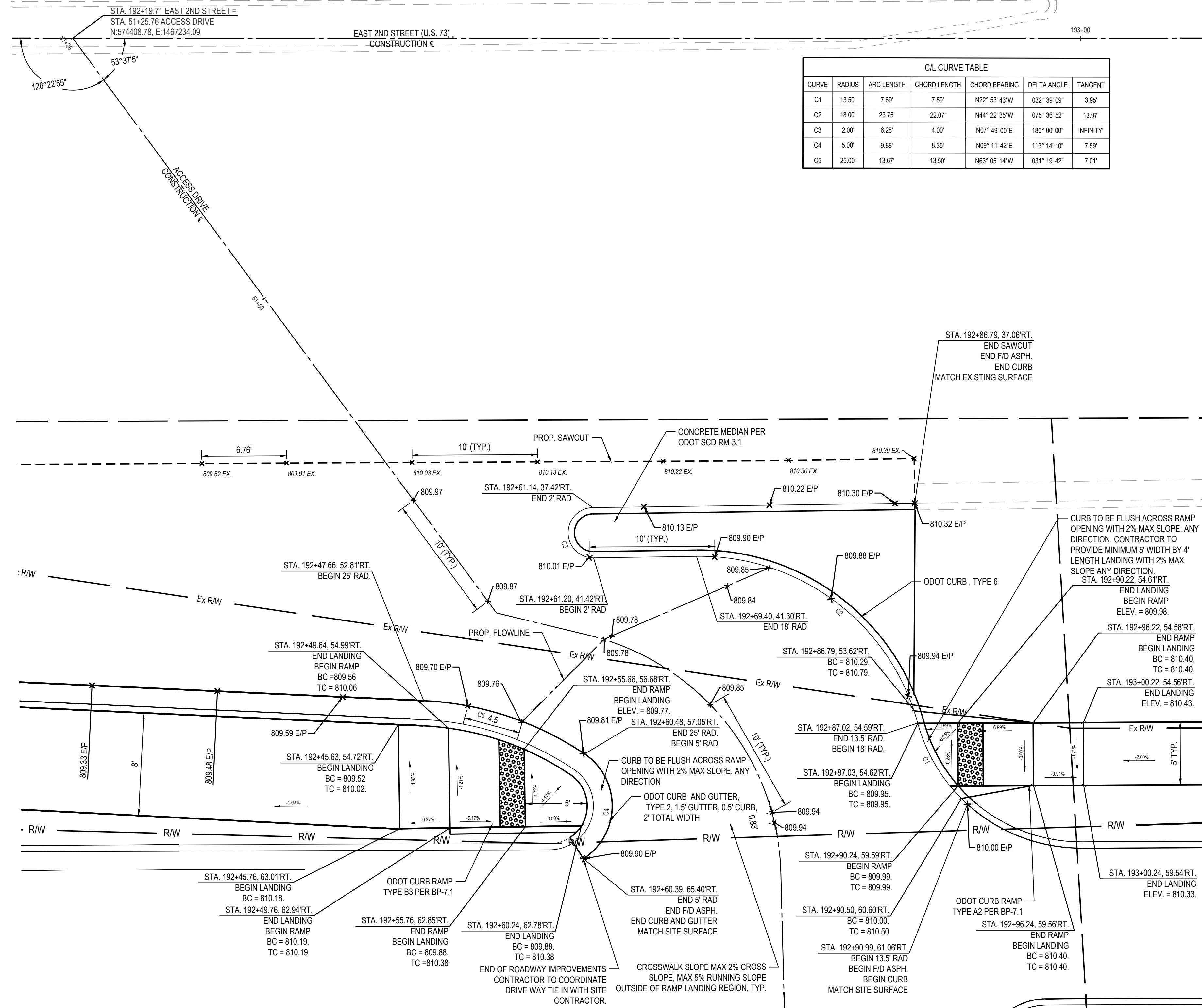
CALCULATED
BAG
CHECKED
P.I.D.

CROSS SECTIONS - STA. 193+00 TO STA. 194+00
EAST 2ND STREET (U.S. 73)

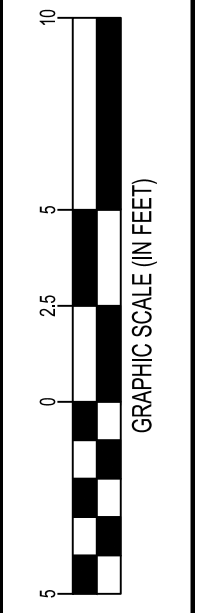
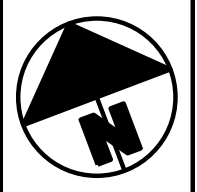
EAST 2ND ST ROADWAY IMPROVEMENTS
FRANKLIN, OH

R10
R12

- NOTES:**
1. STATION/OFFSET IS MEASURED FROM EDGE OF ASPHALT/CONCRETE UNLESS OTHERWISE NOTED.
 2. THE REALTY LINK SITE IMPROVEMENTS ARE SHOWN FOR REFERENCE ONLY. SEE SITE CONSTRUCTION PLANS FOR DETAILS.
 3. SEE PAVEMENT MARKING AND SIGNAGE SHEET R12 FOR SIGN REMOVALS, RELOCATIONS, AND REPLACEMENTS.
 4. F/D DENOTE FULL DEPTH, RAD. DENOTES RADIUS. RADIUS SHOWN IS MEASURED FROM EDGE OF ASPHALT PAVEMENT. EX. DENOTES EXISTING.
 5. CONTRACTOR MUST LOCATE ALL EXISTING UTILITIES IN PROJECT AREA PRIOR TO CONSTRUCTION. UPON LOCATION, IF ANY UTILITY WILL INHIBIT CONSTRUCTION OF PROPOSED ROADWAY IMPROVEMENTS OR BE IMPACTED, CONTRACTOR MUST COORDINATE WITH UTILITY COMPANY FOR RELOCATION AND NOTIFY THE ENGINEER IMMEDIATELY.
 6. REFER TO SHEET R2 FOR CONSTRUCTION CENTERLINE DETAILS.
 7. REFER TO SHEET R11 FOR INTERSECTION GRADING DETAILS.



C/I CURVE TABLE						
CURVE	RADIUS	ARC LENGTH	CHORD LENGTH	CHORD BEARING	DELTA ANGLE	TANGENT
C1	13.50'	7.69'	7.59'	N22° 53' 43"W	032° 39' 09"	3.95'
C2	18.00'	23.75'	22.07'	N44° 22' 35"W	075° 36' 52"	13.97'
C3	2.00'	6.28'	4.00'	N07° 49' 00"E	180° 00' 00"	INFINITY'
C4	5.00'	9.88'	8.35'	N09° 11' 42"E	113° 14' 10"	7.59'
C5	25.00'	13.67'	13.50'	N63° 05' 14"W	031° 19' 42"	7.01'



CALCULATED
BAG
CHECKED
P.I.D.

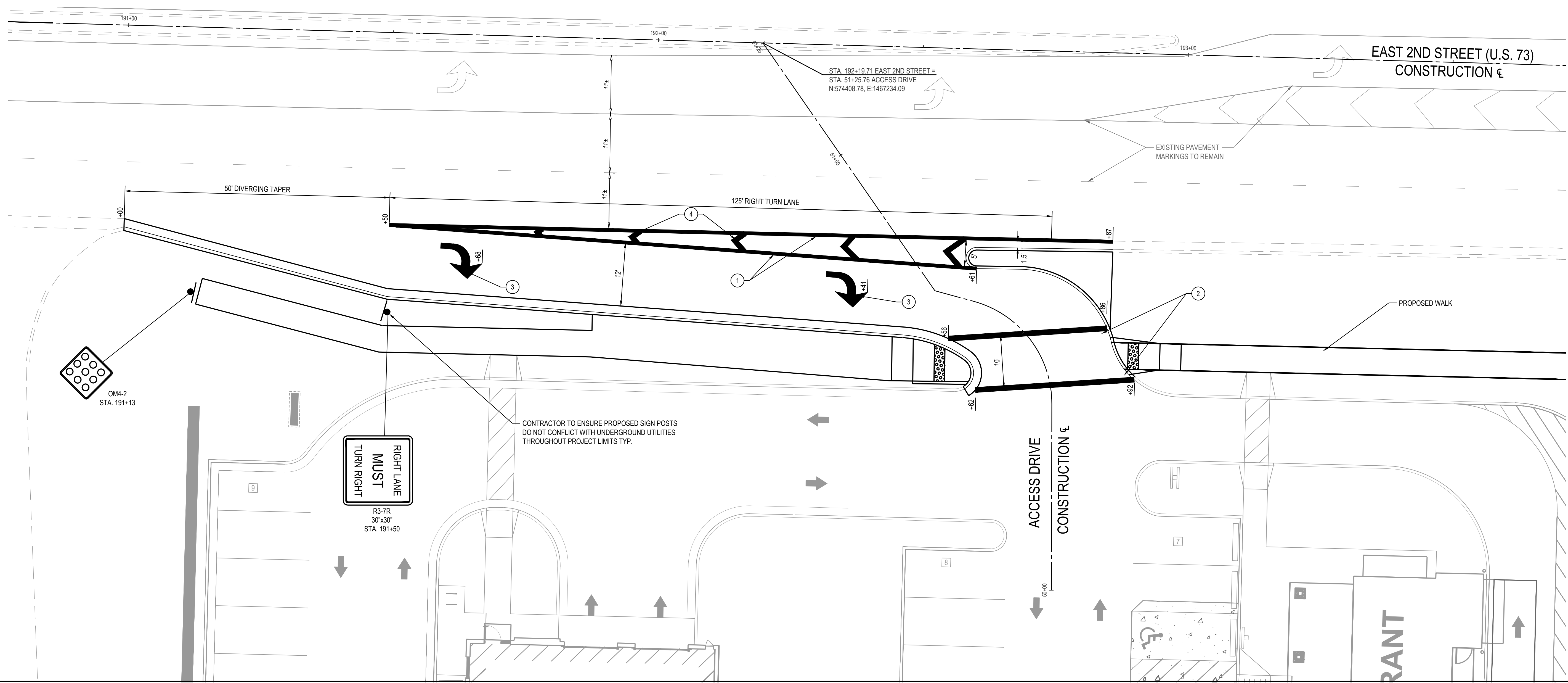
INTERSECTION DETAIL
EAST 2ND STREET (U.S. 73)

EAST 2ND ST ROADWAY IMPROVEMENTS
FRANKLIN, OH

R11
R12

COPYRIGHT, THESE DRAWINGS ARE THE PROPERTY OF CESCO, INC.

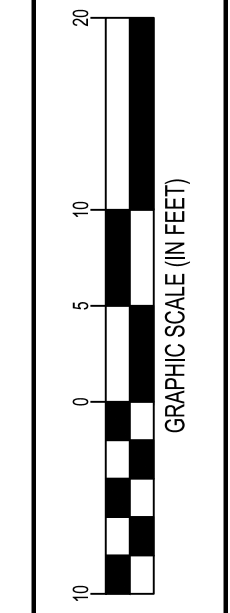
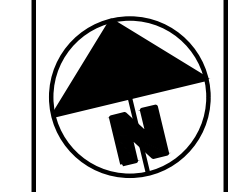
COPYRIGHT, THESE DRAWINGS ARE THE PROPERTY OF CESCO, INC.



PAVEMENT MARKING LEGEND

NO.	ITEM	MARKING
1	644	CHANNELIZING LINE, 8", WHITE
2	644	CROSSWALK LINE, 12", WHITE
3	647	LANE ARROW, WHITE
4	644	CHEVRON MARKING, 12", WHITE

CONTRACTOR TO PROVIDE PAVEMENT MARKINGS AND SIGNAGE IN ACCORDANCE WITH THE LATEST VERSION OF THE ODOT STANDARD SPECIFICATIONS, APPLICABLE ODOT STANDARD CONSTRUCTION DRAWINGS AND THE OHIO MANUAL ON UNIFORM TRAFFIC CONTROL DEVICES.



CALCULATED
BAG
CHECKED
P.I.D.

PAVEMENT MARKING AND SIGNAGE PLAN
EAST 2ND STREET (U.S. 73)

EAST 2ND ST ROADWAY IMPROVEMENTS
FRANKLIN, OH

R12
R12