

Project Update



Josh Adams,

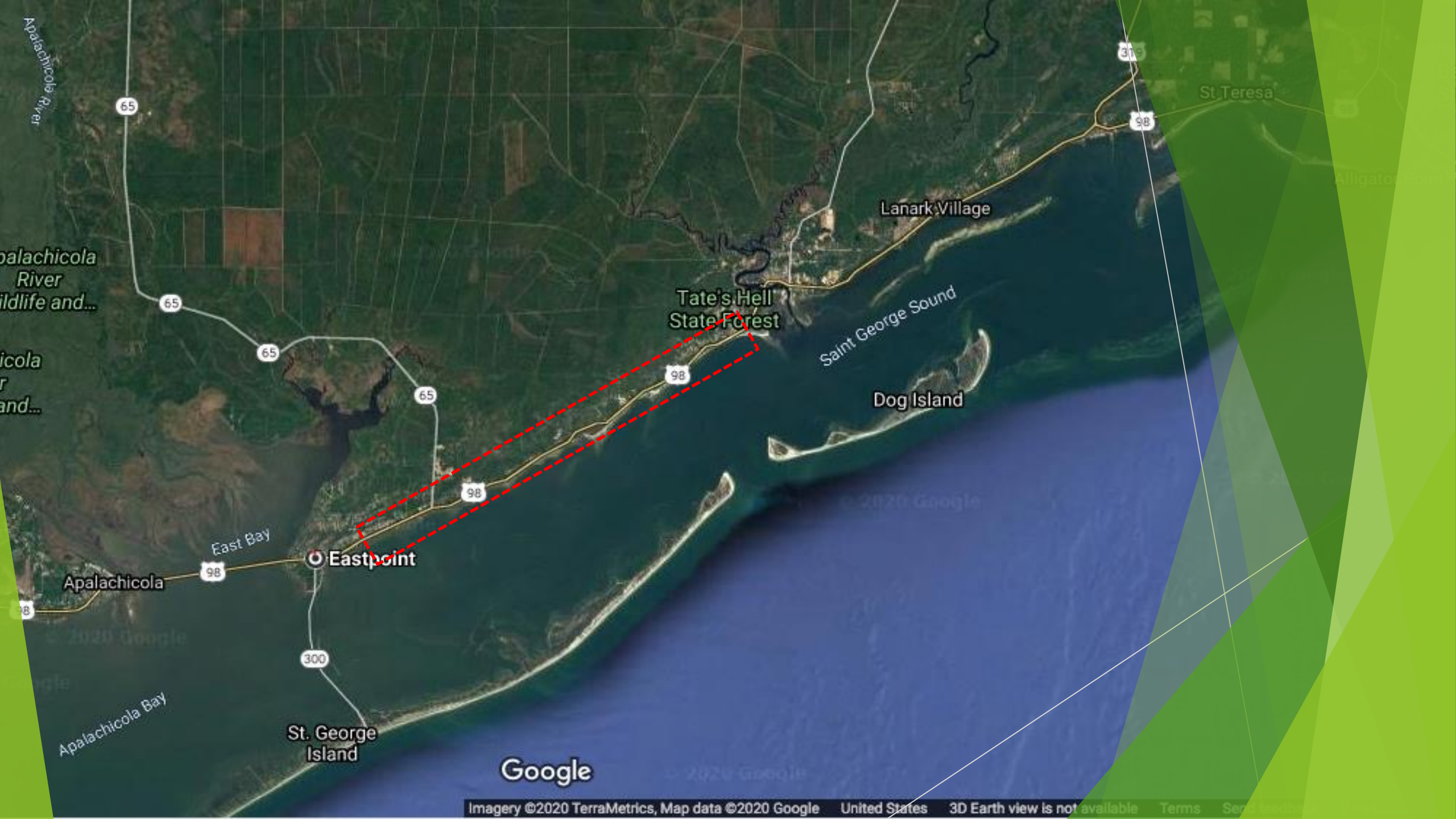
Apalachee Regional Planning Council (ARPC)



Rick Harter,

WSP USA, Inc. (formerly Ecology & Environment, Inc.)





Apalachicola River

St. Teresa

Alligator

Apalachicola
River
Wildlife and...

Apalachicola
River
Wildlife and...

Tate's Hill
State Forest

Lanark Village

Saint George Sound

Dog Island

Eastpoint

Apalachicola

East Bay

St. George
Island

Apalachicola Bay

Google



How Green or Gray Should Your Shoreline Solution Be?

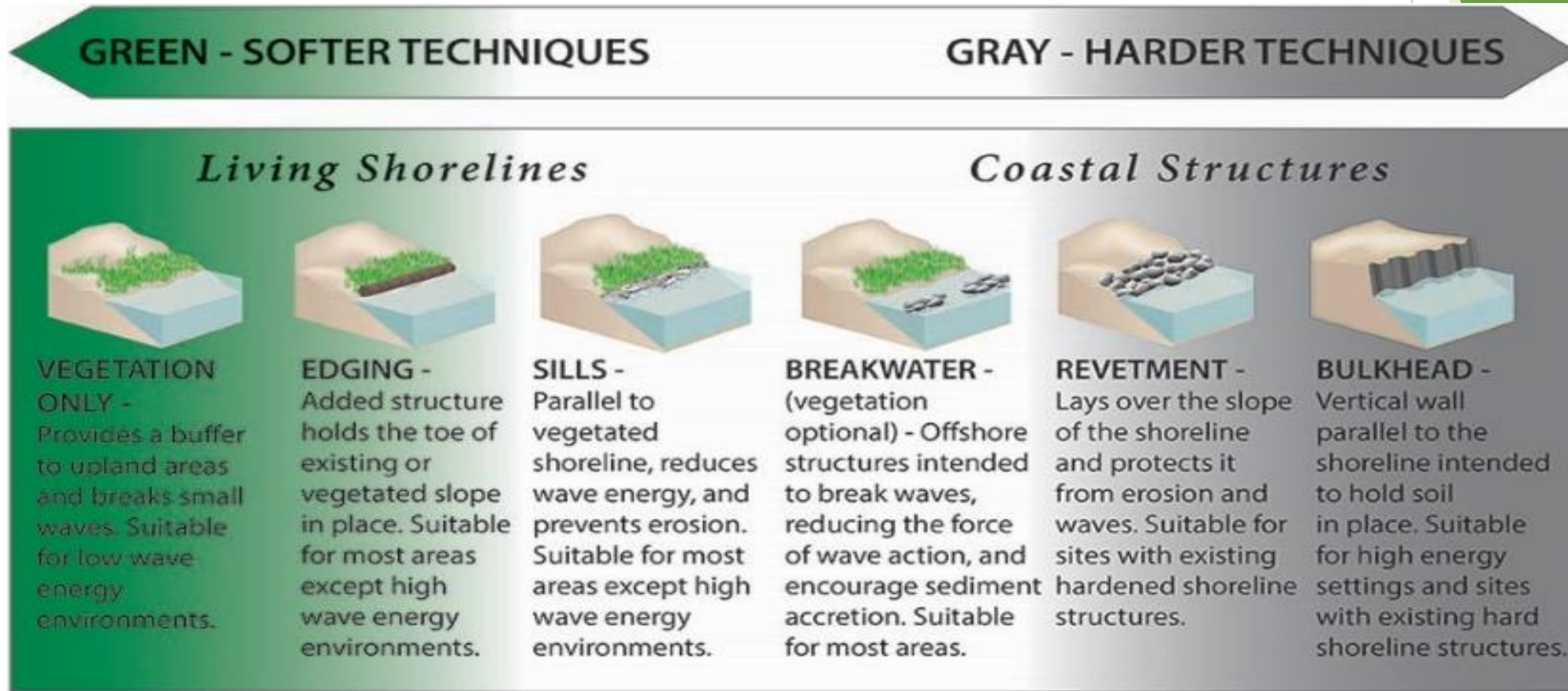


Diagram from [NOAA Living Shorelines](#).



Before Hurricane Michael

After
Hurricane
Michael



Background

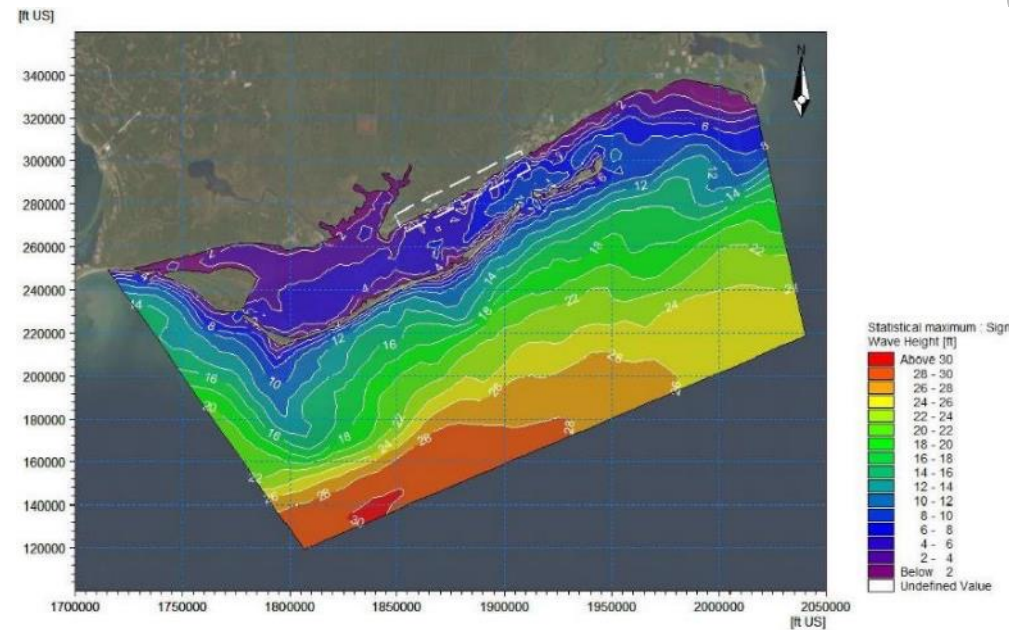
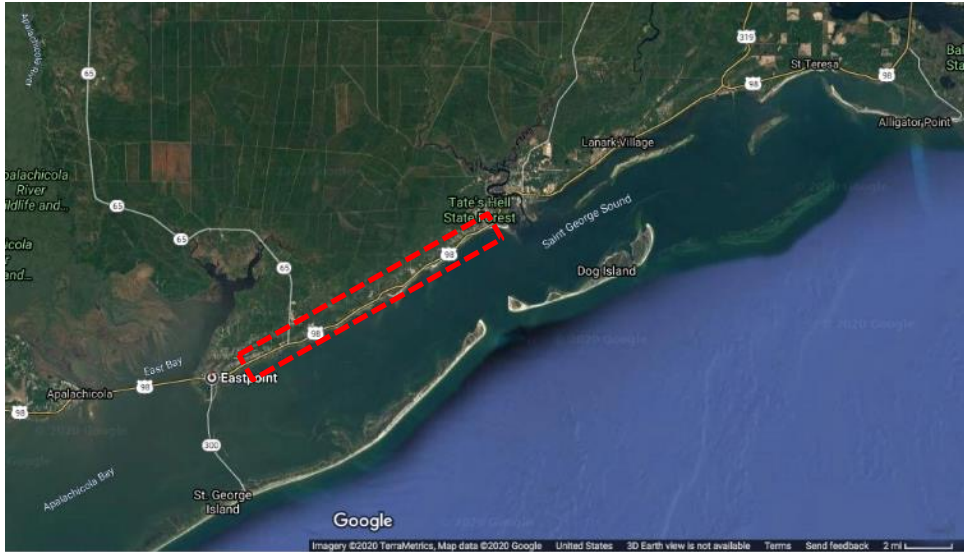


Figure above: Maximum Significant Wave Heights for Category 3 Storm Conditions, model overview

Goals/Vision

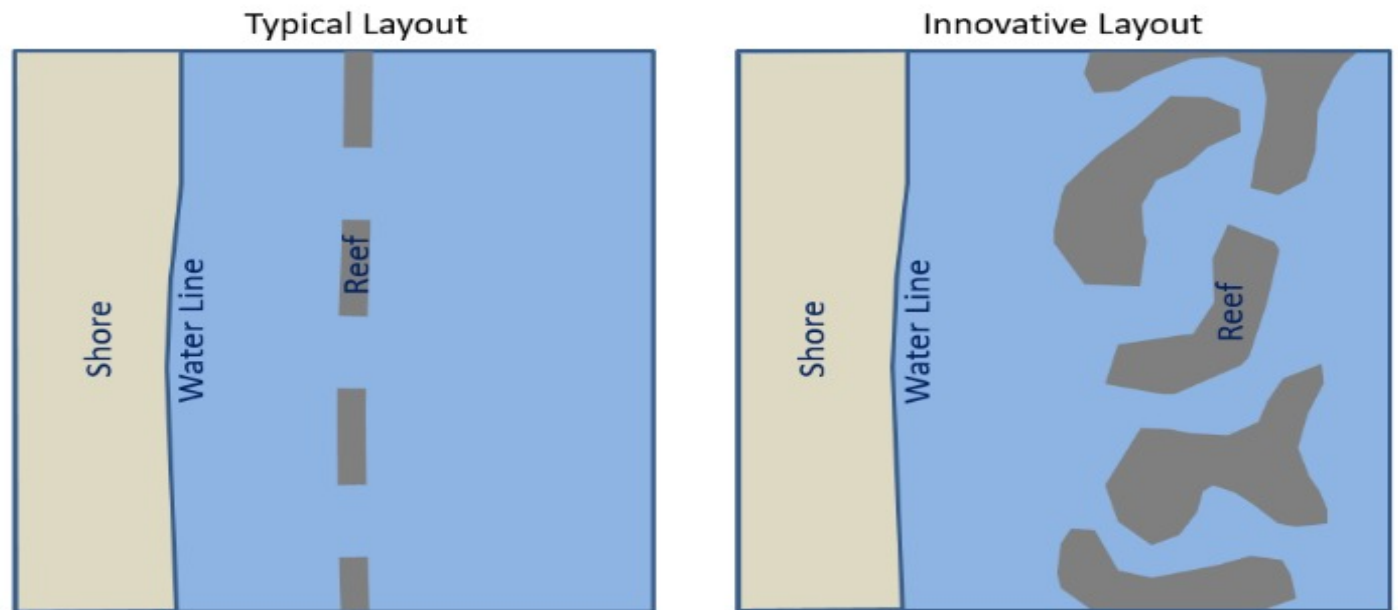
► Specific Restoration Goals:

- 20 acres of new reef
- 30 acres of new marsh



► Project Benefits:

- Ecological Productivity
- Resiliency
- Economic Development



Our innovative design approach will maximize habitat and coastal resiliency, while achieving better aesthetics through natural design.

FRANKLIN 98

Protecting community, conserving the coast.



Phase 1 funded by FDEP:



Phases 2 & 3 funded by:



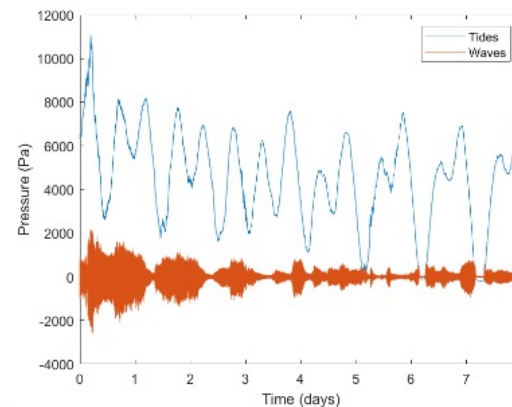
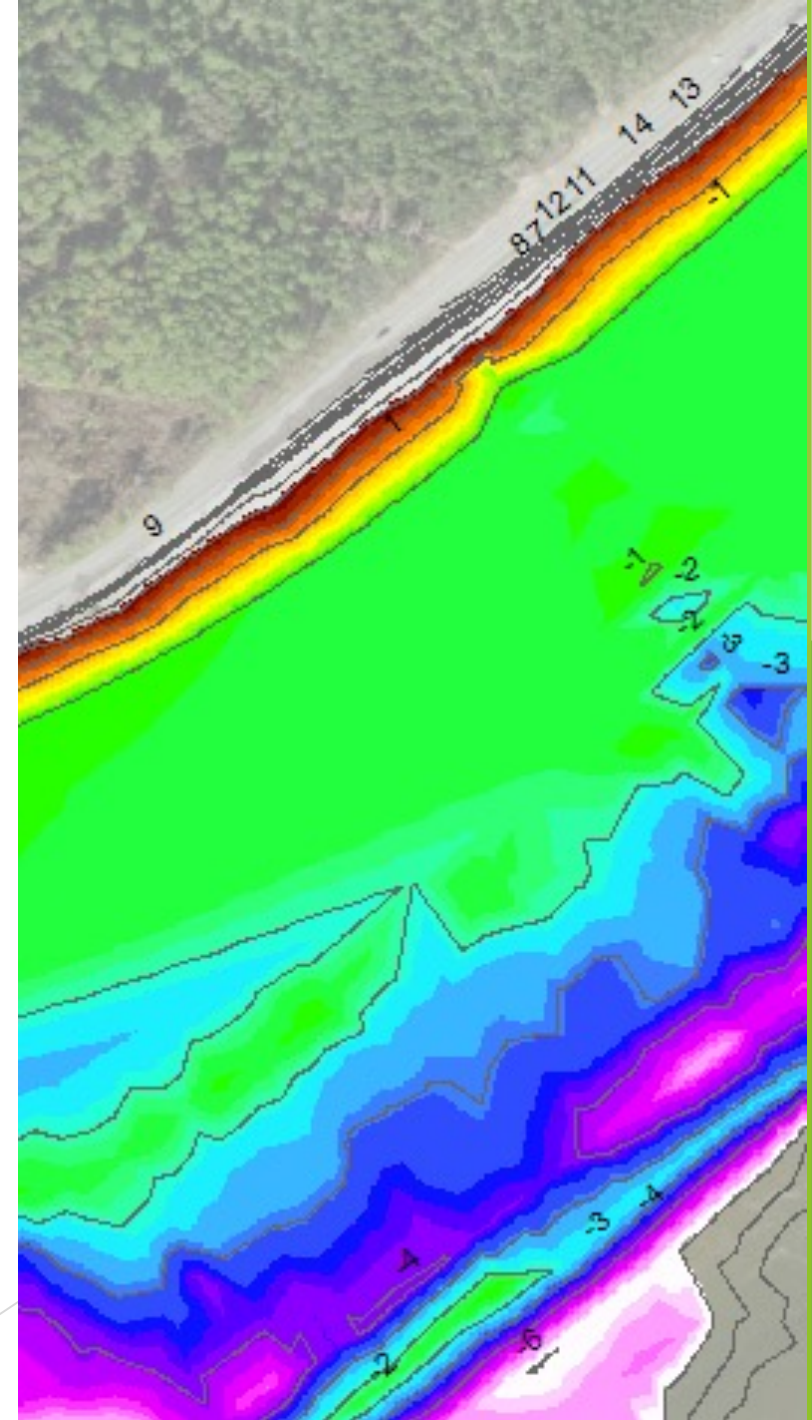
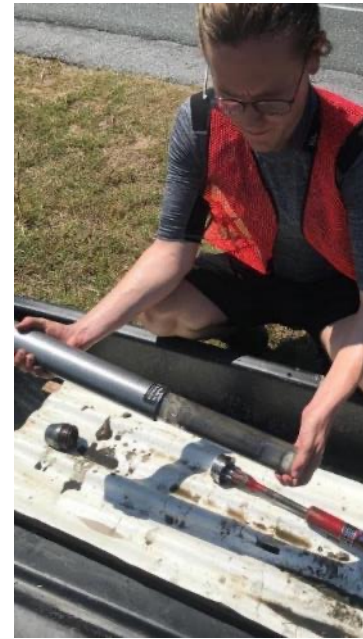
NFWF



Data Collection & Analysis

Detailed site information to complete the engineering and final project design:

- ▶ Bathymetric/topographic (elevation) surveys
- ▶ Ecological characterization
- ▶ Threatened and endangered (T/E) species survey
- ▶ Benthic habitat mapping
- ▶ Hydrodynamic data collection
- ▶ Geotechnical survey



Design Considerations

- I. Site Conditions
 - A. Seagrass Coverage
 - B. Wave Climate
 - C. Bathymetry
- II. Design Considerations
 - A. Regulatory
 - B. Stakeholder Input
 - C. Coastal Infrastructure

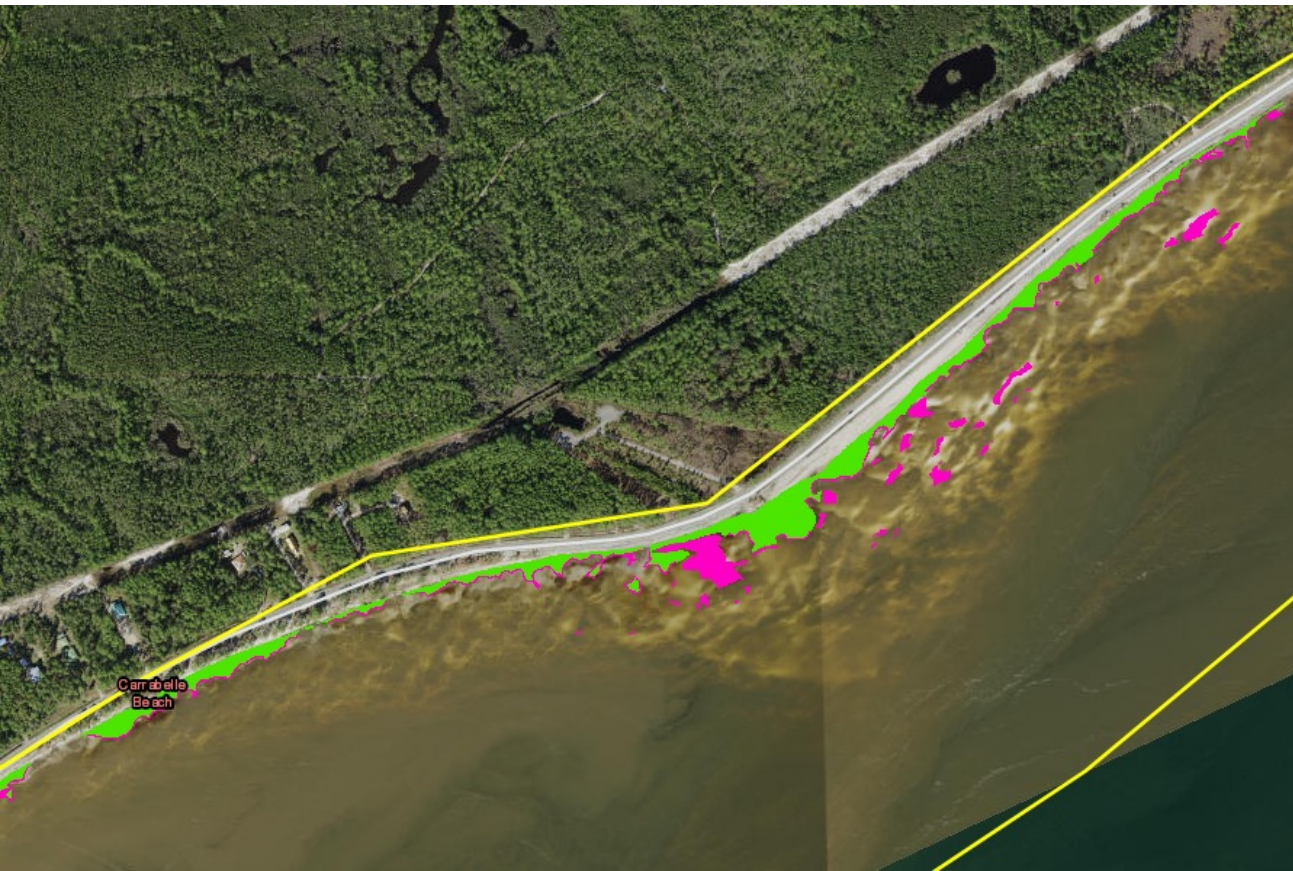


Preliminary Design Review

Go to ArcGIS Online map:

<https://wspgeo.maps.arcgis.com/apps/webappviewer/index.html?id=4d1216357a5846239821f937d75a6801>

1. Zoom/pan to see proposed reefs/marsh.
2. Add comments to map.



Comment Form

Franklin 98 Living Shoreline Map
Public Comment Form

EDITING INSTRUCTIONS

MOBILE: First zoom to the area relevant to your comment, then tap "point" or "area" below. Note that when drawing an area a red line won't appear until you choose the second point of your polygon. Double tap to complete the shape and open the comment form.

BROWSER: First click the "point" or "area" below, and then click the location relevant to your comment (hint: use your mouse wheel or the +/- icons to the right to select a precise spot).

After you type your comment and optional contact information and select 'Save', your input is submitted (it will not be visible on the map here).

Add a New Comment (point)

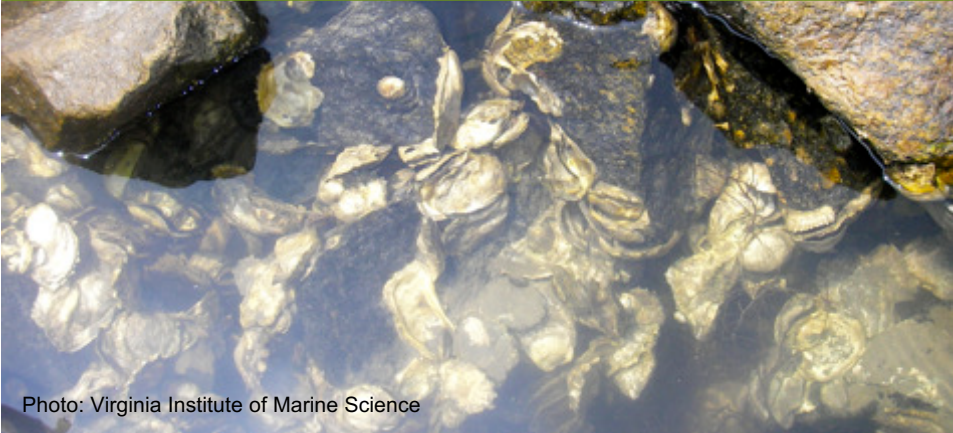
●
Add a New Comment

Add a New Comment (area)

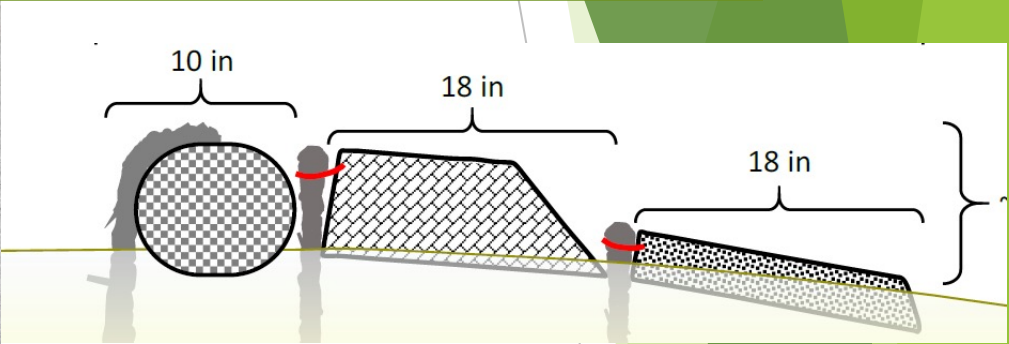
▢

Proposed Marsh Sill Materials

Rocks/Recycled Concrete



Oyster Catcher Pillows/Logs



Oyster Prisms



Oyster Catcher Table Tops



Proposed Reefs



Riprap/recycled concrete



Reef balls



Reef balls



Oyster Catcher Tabletops



Imagine the Possibilities



Existing Conditions



Proposed Conditions



Questions or Comments?



Josh Adams, Apalachee Regional
Planning Council (ARPC)
Environmental Planning Manager
jadams@arpc.org
850-488-6211 ext. 104



Rick Harter, WSP
Coastal Restoration Specialist
Rick.Harter@wsp.com

