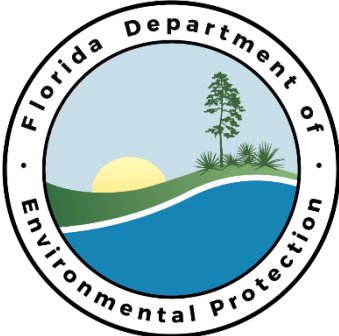




February 4, 2020

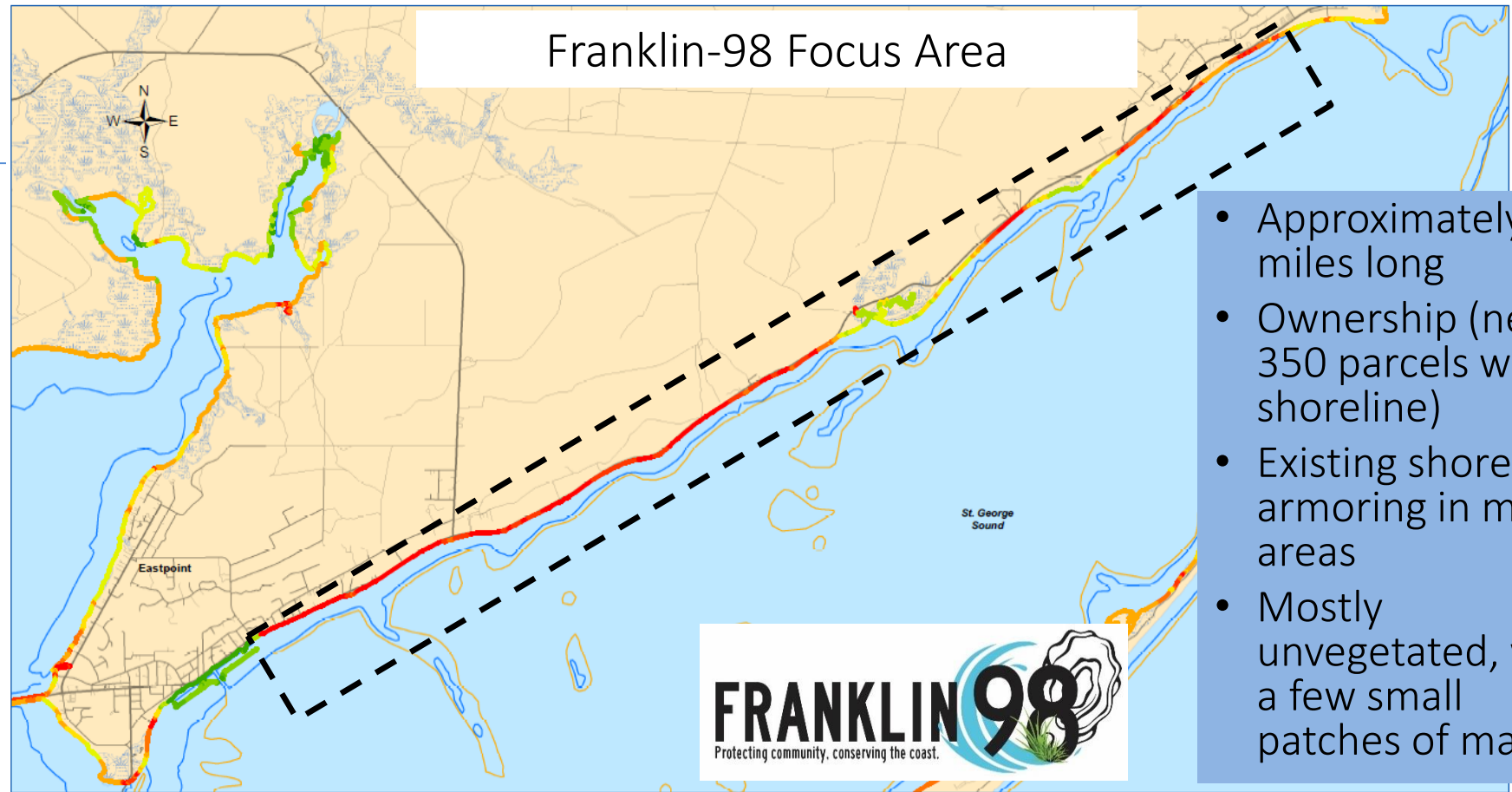


Agenda

1. Introductions
2. Project Background/Purpose
3. Update on Pilot Experiment
4. Update on Funding Opportunities
5. Public Communication Efforts
6. Feedback Received to Date
7. Discuss Possible Restoration Areas
8. Next Steps/Action Items

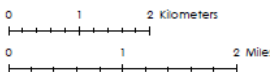


Franklin-98 Focus Area



- Approximately 12 miles long
- Ownership (nearly 350 parcels with shoreline)
- Existing shoreline armoring in many areas
- Mostly unvegetated, with a few small patches of marsh

Data Sources:



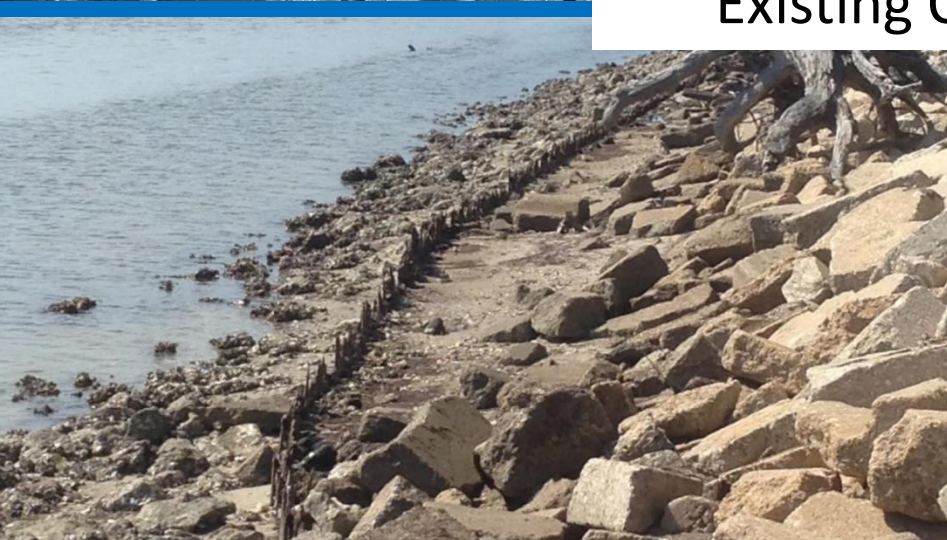
Ecology and environment, inc.
Global Environmental Services

SHORELINE HABITATS AND RESILIENT COASTS
ST. GEORGE SOUND FOCUS AREA

Apalachicola Bay,
Florida



Existing Conditions

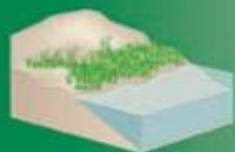


HOW GREEN OR GRAY SHOULD YOUR SHORELINE SOLUTION BE?

GREEN - SOFTER TECHNIQUES

GRAY - HARDER TECHNIQUES

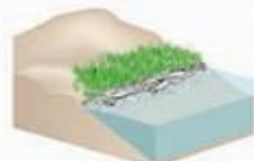
Living Shorelines



VEGETATION ONLY - Provides a buffer to upland areas and breaks small waves. Suitable for low wave energy environments.



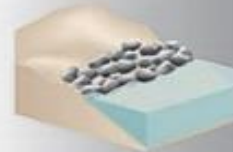
EDGING - Added structure holds the toe of existing or vegetated slope in place. Suitable for most areas except high wave energy environments.



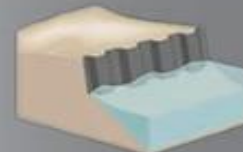
SILLS - Parallel to vegetated shoreline, reduces wave energy, and prevents erosion. Suitable for most areas except high wave energy environments.



BREAKWATER - (vegetation optional) - Offshore structures intended to break waves, reducing the force of wave action, and encourage sediment accretion. Suitable for most areas.



REVETMENT - Lays over the slope of the shoreline and protects it from erosion and waves. Suitable for sites with existing hardened shoreline structures.



BULKHEAD - Vertical wall parallel to the shoreline intended to hold soil in place. Suitable for high energy settings and sites with existing hard shoreline structures.

Coastal Structures

Estuarine habitats provide protection

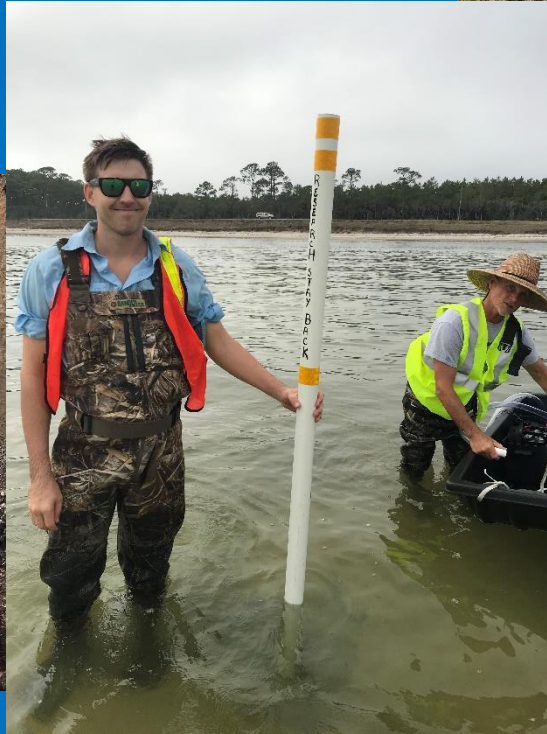


Current Activities (under \$125K FDEP Grant)

- Stakeholder Engagement Meetings
- Background Investigations
- Habitat Suitability Analysis and Materials Evaluation
- Seagrass Mapping
- Coastal Conditions Analysis

Pilot Experiment

- Permits received
- Materials on hand
- Installation is underway

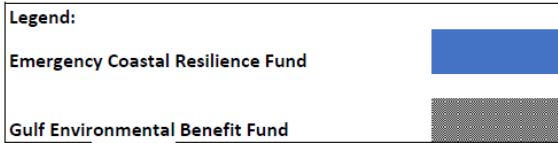
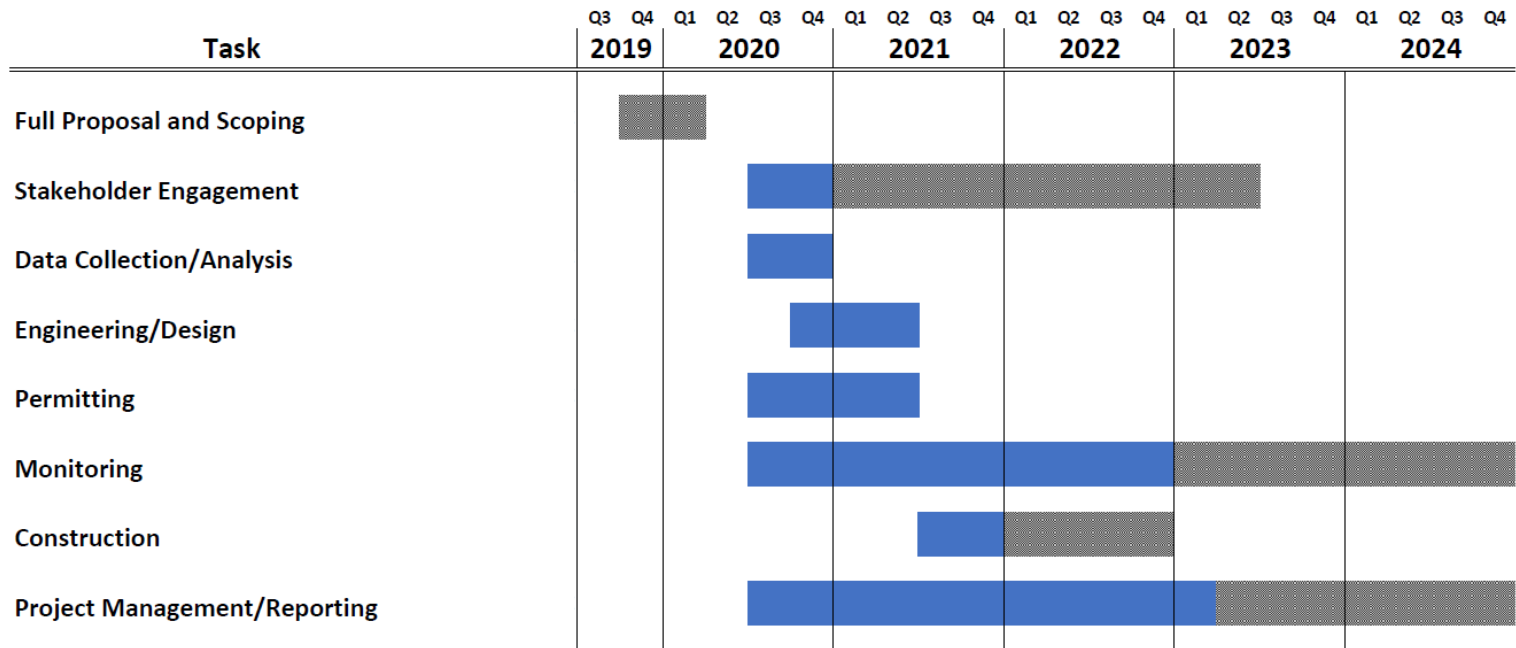


Experimental Plot



NFWF Grant Requests

Proposed Task Breakdown and Tentative Schedule



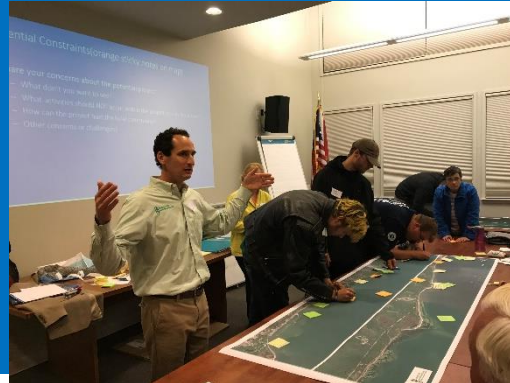
Meeting Schedule



Meeting	Tentative Date	Objectives/Topics
1 st Agency Mtg	Oct. 24 (daytime)	Background, goals/constraints/vision
1 st Stakeholder Mtg	Nov. 12 (evening)	Background, goals/constraints/vision
2 nd Agency Mtg	Nov. 22 (daytime)	Shared data, discussed conceptual ideas
2 nd Stakeholder Mtg	Dec. 4 (evening)	Shared data, discussed conceptual ideas
3 rd Stakeholder Mtg	Jan. 14 (evening)	Shared data, discussed conceptual ideas
4 th Stakeholder Mtg	Feb. 4 (evening)	Share data, discuss conceptual ideas, etc.

Topics Discussed at Initial Meetings

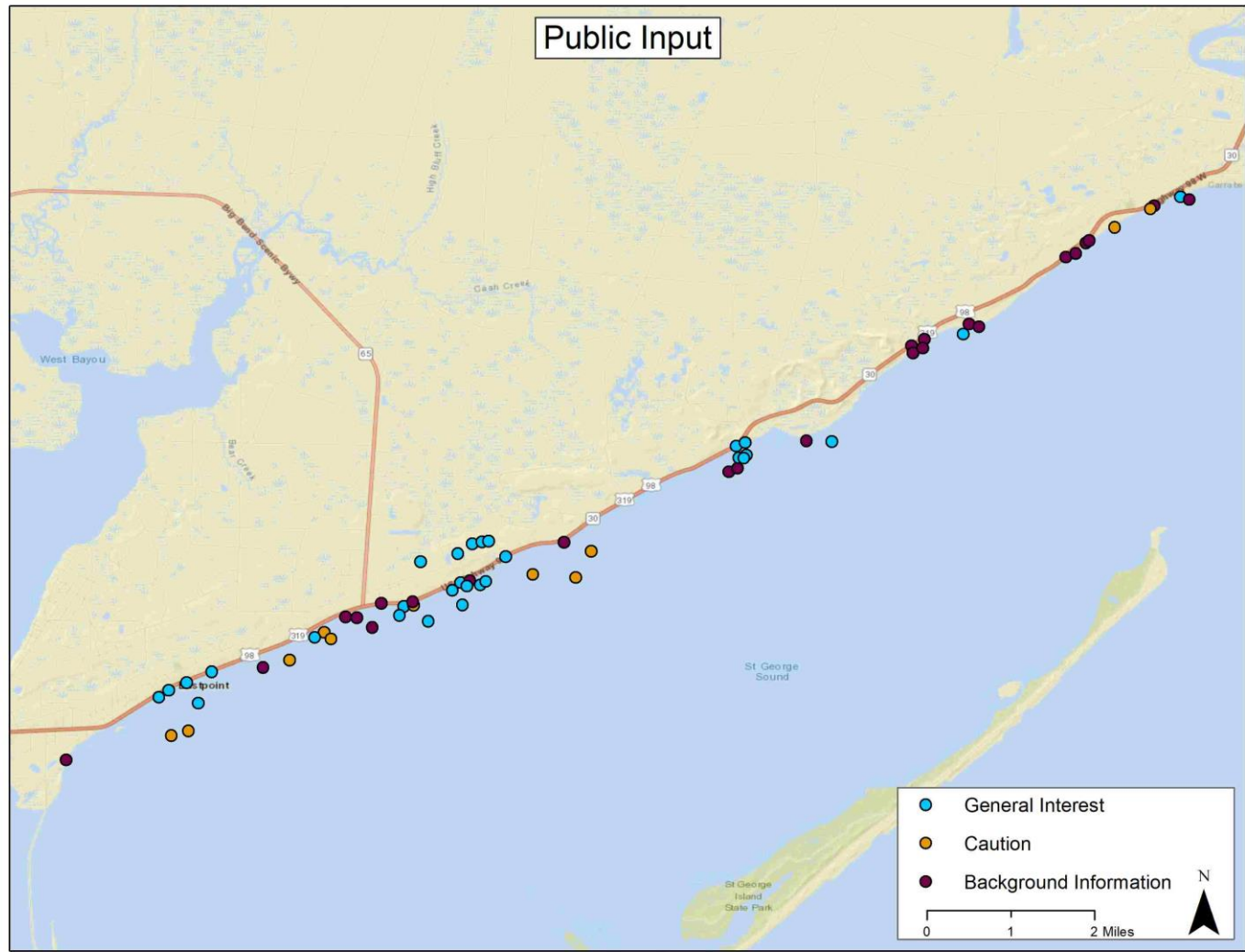
- Historic knowledge
 - What do you remember about the past?
 - What activities occur in the area, now and in the past?
 - What is the public's perception of the area?
 - Other thoughts/memories?
- Project Goals/Vision
- Potential Constraints



Feedback Received

- Knowledge Transferred
 - Erosional “hot spots”
 - Fishing and bird use “hot spots”
- Vision/Goals
 - Mosaic of various habitats
 - Partnership with Franklin County School
- Constraints/Challenges
 - Maintain some unvegetated shorelines for shorebirds
 - Avoid use of guard rails that might interfere with view
 - Maintain some open areas for cast netting and gigging






Share your ideas for potential restoration areas

A large green circle containing white text.

Use green
dots to
suggest areas
for proposed
marsh

A large blue circle containing white text.

Use blue dots
to suggest
areas for
proposed reef

Next Steps



- Continue early planning and feasibility study under FDEP Florida Coastal Management Program (\$125K awarded FY19/20)
- Seek project funding for design/permitting/construction
 - Two other NFWF grant applications pending
 - Identify additional resources and partnering opportunities
 - Seek additional letters of support/commitment
- Gather additional knowledge, data, reports, etc.
- Continue engaging with stakeholders

Please follow the project on Facebook www.facebook.com/livingshore

Questions?

Josh Adams

jadams@thearpc.com

(850) 488-6211 ext. 104



Rick Harter

rharter@ene.com

(850) 591-6957

