

Sources: Esri, HERE, Garmin, USGS, Intermap, INCREMENT P, NRCan, Esri Japan, METI, Esri China (Hong Kong), Esri Korea, Esri (Thailand), NGCC, © OpenStreetMap contributors, and the GIS User Community

FLORIDA ENVIRONMENTAL AND LAND SERVICES, INC.

221-4 DELTA COURT
TALLAHASSEE, FL 32303
(850) 385-6255 (850) 385-6355 (FAX)

PROJECT:

Johnson: Dock

FRANKLIN COUNTY, FLORIDA

TITLE:

Figure 1- Location Map

DATE:

SEP-04-2019

BY:

JLB

CHECK:

EP

FELSI PROJECT #

18-XXXX

Page:

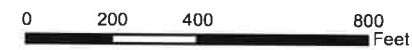
1

Of:

1

 Parcel Boundary (PA) (0.21 Acres)

 Franklin County Parcels



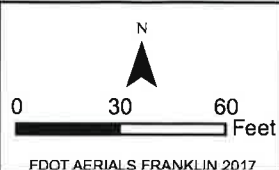


Parcel Boundary (PA) (0.21 Acres)
 Franklin County Parcels

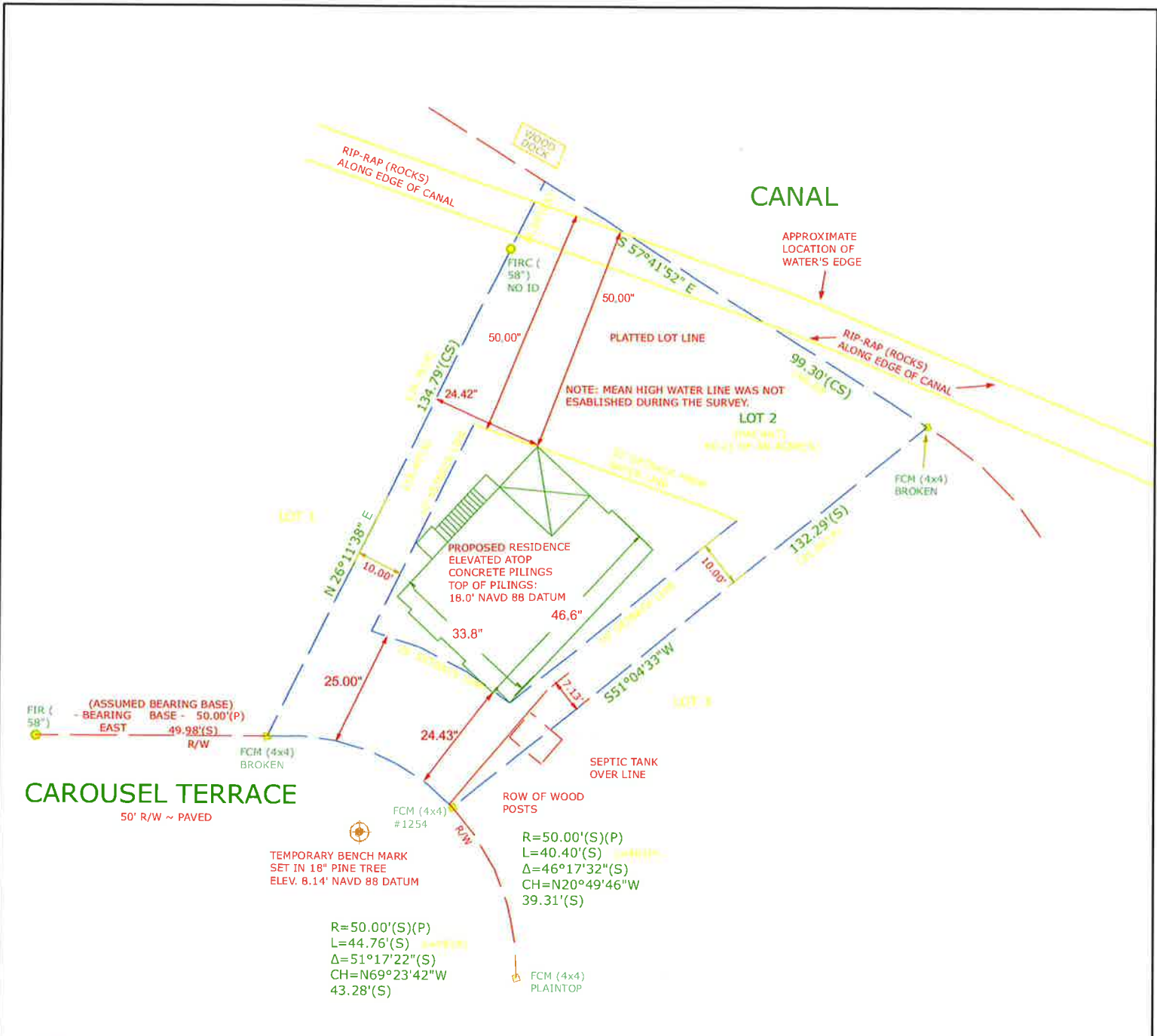
FLORIDA ENVIRONMENTAL AND LAND SERVICES, INC.
 221-4 DELTA COURT
 TALLAHASSEE, FL 32303
 (850) 385-6255 (850) 385-6355 (FAX)

PROJECT:
Johnson: Dock
 FRANKLIN COUNTY, FLORIDA

TITLE
Figure 2 - Aerial Map
 DATE: SEP-04-2019 BY: JLB CHECK: EP FELS/PROJECT # 18-XXXX



Page: 1
 Of: 1



CAROUSEL TERRACE
50' R/W ~ PAVED

CANAL

NOTE:
ELEVATIONS ARE BASED ON GPS (GLONASS) OBSERVATIONS.
BENCHMARK 872.8261 J WAS TIED WITH VERTICAL
ACCURACY OF 0.02'

FLOOD INFORMATION:
Base Flood Elevation: 17.0 ft
Flood Zone: VE
Effective FIRM Panel : 12037C0295F
FIRM Date: February 05, 2014

Survey Option 2	— EMONS
— EBNDRY	— ENOTES
— EDECK	— EWATER
— EFENCE	— PBLDG

Florida Environmental & Land Services Inc.
221-4 DELTA COURT
TALLAHASSEE, FL 32303
(850) 385-6255

PROJECT: **Johnson Dock**
FRANKLIN COUNTY, FLORIDA

TITLE: **Figure 2 - Plan**

DATE:	BY:	CHECK:	FELSI PROJECT #
2/17/2020	NC	EP	19-1671

0 15 30 Feet

FDOT AERIALS 2019