



Shaping the Future  
of Public Health in  
Larimer County

# Larimer County Department of Health and Environment

Health Strategists: Evolving to Meet Changing Needs





## Our Mission

Working to provide everyone in Larimer County the opportunity for a healthy life.

# Evolving To Meet Changing Needs

## Presentation Agenda:

---

- Introducing Public Health 3.0 – The Power of Partnership
- What is a Health Strategist?
- How Public Health 3.0 Benefits Our Community
- Our Programming
- Public Health in Action



# Introducing Public Health 3.0

**The Power of Partnership**





## How We Got Here

---

- **Public Health 1.0**  
Clean air + clean water + vaccinations = less disease.
- **Public Health 2.0**  
Finding new ways to reduce disease incidence in populations
- **Public Health 3.0**  
Proactive partnering with *you!*

# Health Strategists

## Learning To Leverage LCDHE

---

- Access to critical data
- Advisor and advocate
- Helping people stay healthy
- Enabling more vibrant, resilient communities





# Solutions for Today's Challenges

## Familiar Issues

---

- Communicable & chronic diseases
- Foodborne illnesses
- Parent, child, and family health
- Clinical services
- Environmental health and safety
- Emergency response preparedness
- And more...

## Social Determinants of Health

---

- Income
- Employment
- Childcare
- Mental/emotional health issues
- Transportation
- Education
- Access



## Where We're Going

---

- Stronger connections with civic and community leaders
- Sharpened focus on proactive solutions
- Better outcomes for historically underserved communities and families
- Bridge-builders among diverse stakeholders
- Active partners



# How Public Health 3.0 Benefits Our Community

## Engage Early And Often With LCDHE

---

- Finding beneficial solutions to complex problems
- Enabling better outcomes from early collaboration on policies, initiatives, etc.
- Ensuring no Larimer County community is an “underserved community”
- Supporting cross-community partnerships to address the social determinants of health
- Minimizing the impact of health crises
- Identifying and reducing hazards to promote success

# Several Disciplines. Powerful Synergy.

Helping Communities Achieve Their Goals Through Coordinated Efforts





# Strategic Planning and Health Equity Initiatives

## Preparation, Best Practices, and Continual Improvement

- Internal workgroups focused on process improvement
- Collaboration on updates to our vision, direction, and goals
- Recommendations for improving health equity and meeting the diverse needs of residents





# Office of Public Health Planning and Partnership

## Collaborating With Community Partners on the Social Determinants of Health

- Data and population epidemiology
- Community health improvement
- Youth engagement program



# Clinical Services

## Making Vital Information and Critical Services Easy To Obtain

- Low- or no-cost immunizations for infants, children, and adults
- Health information, immunizations and for international travel
- Sexual and reproductive health preventative services



# Parent, Child, and Family Health

## Engaging With Residents To Understand and Address Their Needs

- Nurse-Family Partnership program for eligible first-time mothers
- WIC – Special Supplemental Nutrition Program for women, infants, and children
- HCP program for families with children who have special healthcare needs





# Environmental Health

## Identifying and Mitigating Issues Where People Live, Work, and Play

- Environmental Planning
- Air Quality and Improvement Initiatives
- Septic Systems
- Water Quality
- Burn Permits
- Childcare & School Inspections
- Food Safety Program
- Foodborne Illness & Complaints
- Aquatic Facilities/Pool Inspections



# Communicable Disease

## Using Local Knowledge and Global Data To Tackle Health Issues

- Detection, investigation, and management of communicable diseases or foodborne illnesses
- Dissemination of timely and accurate information about conditions affecting public health
- Coordination of epidemic or pandemic responses



# Emergency Preparedness and Response

## Protecting Communities Through Preparation and Vigilance

- Drafting of emergency response plans, procedures, and protocols
- Prevention, response, and recovery assistance related to natural or manmade crises
- Ongoing interactions with other agencies



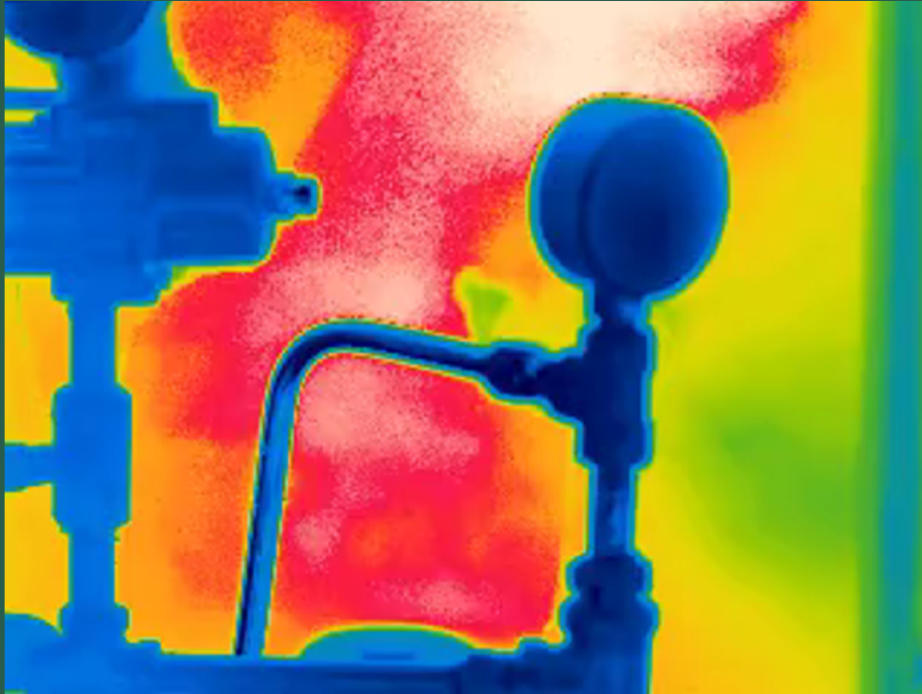
# Public Health in Action

Working Together to Improve Health



# Air Quality

Partnering for Innovative Solutions – Optical Gas Imaging Camera



# Safe Sleep Campaign

Community Driven Prevention





# Health, Well-Being, and Resilience Data Dashboard

Helping Larimer County Make Data-Driven Decisions



## LARIMER COUNTY HEALTH, WELL-BEING, AND RESILIENCE DATA DASHBOARD

[www.larimer.gov/healthdashboard](http://www.larimer.gov/healthdashboard)

# Community Health Assessment

## Helping Larimer County Make Data-Driven Decisions

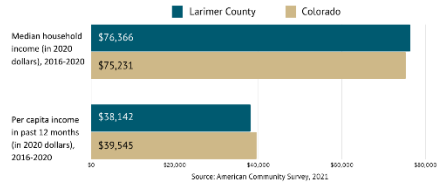


### Income and Employment

Income is a key factor in overall health and health outcomes. Income has been shown to be connected to social status, quality of life, physical and mental health outcomes, and access to care. Individuals with higher incomes report greater satisfaction with health care and less concern about being able to afford necessary care. Income poverty is a risk factor for premature mortality as well as poor health. At the community level, neighborhoods with higher-income households have an influence on health, influencing the availability of local resources including access to jobs, commerce, schools, and other resources that provide place-based health benefits. Neighborhoods with less economic advantage have fewer recreation resources and higher densities of fast-food outlets. Health-related behaviors like healthy eating, abstaining from tobacco, and obtaining the recommended levels of exercise are associated with high income as well. Income poverty during childhood can have lifetime consequences for children such as reduced educational attainment and higher rates of ill health later in life. Income poverty can impact multiple generations, especially for historically marginalized communities.

In the United States income is associated with increased age at the time of death, meaning that those with higher incomes tend to live longer on average. Comparing income earners in the top and bottom 1% of earners demonstrates a nearly 15-year gap in anticipated lifespan among men and a 10-year gap among women. Simply put, on average, higher-earning individuals outlive their lower-earning peers.

#### Larimer County compared to Colorado



Median household income is the income amount that divides a population into two equal groups, half having an income above that amount, and half having an income below that amount. Per capita income refers to measures the average income earned per person in a given area (city, region, country, etc.) in a specified year.

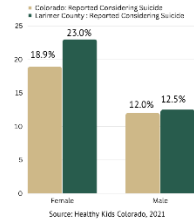


### Mental Health

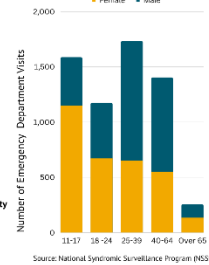
In Larimer County, suicide attempts and suicide-related emergency department visits are higher among adolescent females between 11-17 than among males of the same age. This trend reverses for adults, with males having slightly higher visits. Males are also more likely to die by suicide than females.

The gender disparity found in suicide-related emergency department visits is also found among Larimer County youth who report having seriously considered attempting suicide. Larimer County females, in particular, have an even higher rate than their counterparts statewide in Colorado. Meanwhile, local male youth have levels very similar to levels statewide.

#### Percent answered yes to "seriously considered attempting suicide" during the past 12 months\* Colorado vs. Larimer County

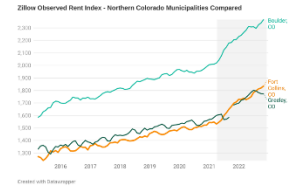


#### Suicide-Related Emergency Department Visits Among Larimer County Residents January 2020 - June 2022



### Housing and Housing Instability

Between 2016 and 2022, rental costs, along with housing real estate values, increased across northern Colorado, and Larimer County is no exception. According to the Zillow Observed Rent Index, there has been a 44% increase in the median rental cost in Fort Collins. Evaluations conducted by Colorado Housing and Finance Authority show similar trends in both Loveland and Fort Collins across all apartment types from studio apartments to 3-bedroom apartments. Nationally, housing costs have increased 8% year over year for urban dwellers, and while that pace of increase may slow in the future, the impact of this housing cost increase will persist particularly for renters.



Residents in focus groups described how housing costs squeeze household budgets and crowd out other opportunities such as recreation and enrichment opportunities for children in the household. High housing costs can also force parents to work longer hours and add additional strain on the family unit. The combination of rising costs and economic precarity can threaten the housing stability of households with a range of incomes. At the community level, increased housing costs are associated with an increase in homelessness.

High housing costs limit options for home ownership with its wealth creation opportunities and increases the risk of displacement. At the same time, unshoused focus group respondents said that the high costs of housing made the pathway from unshoused to housed appear near impossible. Those respondents experiencing homelessness saw few opportunities for stable housing available to them even if they did get a job and a predictable paycheck.

# TAC 212: Youth Center

Collaboration to Meet Community Needs

YouTube Video: <https://youtu.be/ts84fP4H8Ds>





# How We Can Work Together Most Effectively

---

- Clear communication
- Shared vision and goals
- Early engagement
- Collaborative spirit
- Innovative approaches

# Partner With Us

**Capitalize On Our Data, Planning Models, Contacts, And More**

---

We are excited to partner with you - to help you flourish, as we collectively create an even better place for our families to grow and thrive.



# Questions? Comments?

## Your Input Is Essential

---

Please...

- Ask questions
- Share your thoughts on what you need from LCDHE
- Make recommendations



# Thank You

We Appreciate Your Commitment to Improving Life in Larimer County

