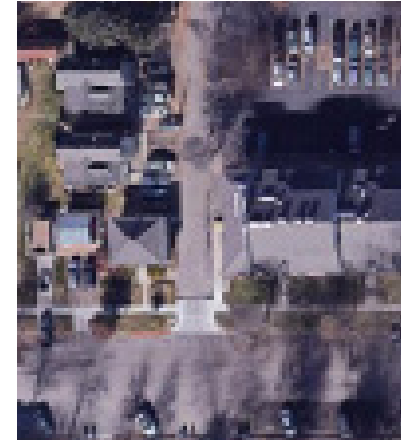
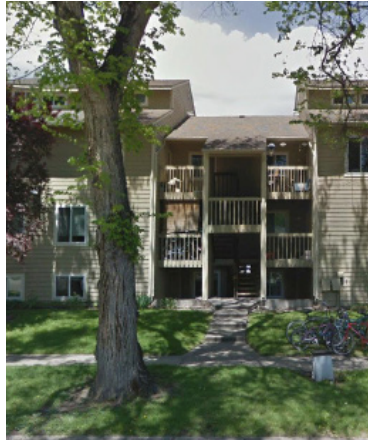


OT-C

Old Town District, High

PURPOSE

The Old Town District, High (OT-C) subdistrict is intended for areas that are a transition between Downtown, the CSU campus, and adjacent neighborhoods. Intensive commercial-use areas or high traffic zones have been given this designation in accordance with an adopted subarea plan.



BUILDING TYPES

The following building types are permitted in the OT-C subdistrict:

BUILDING TYPES	UNITS	LOT AREA	FLOOR AREA
Detached House (Urban & Suburban)	1 max.	4500 ft ² min.	2,400 ft ² max.
Duplex	2 max.	4500 ft ² min.	No max.
Apartment Bldg.	3 min. to 6 max. Each Additional Unit	4500 ft ² min. & additional 750 ft ² min. for each unit greater than 3 units	No max.
Rowhouse	2 min. to 3 max.	4500 ft ² min.	No max.
	4 max.	6000 ft ² min.	No max.
	5 max.	7500 ft ² min.	No max.
Cottage Court	5 min.	9000 ft ² min.	See Section 3.1.3
Mixed-Use	3 min. to 6 max. Each Additional Unit	4500 ft ² min. & additional 750 ft ² min. for each unit greater than 3 units	No max.
ADU	1 max.	N/A	See Section 3.1.9
Detached Accessory Structure	See Section 3.1.8		

Refer to Building Types Article 3 and Use Standards Article 4 for specific definitions.