



Council Priority

Develop a Use Plan for the Hughes Property

June 11, 2024

QUESTIONS:

1

What feedback do Councilmembers have regarding the guiding principles?

2

What feedback do Councilmembers have on utilizing a People's Assembly vs. an in-house engagement process?





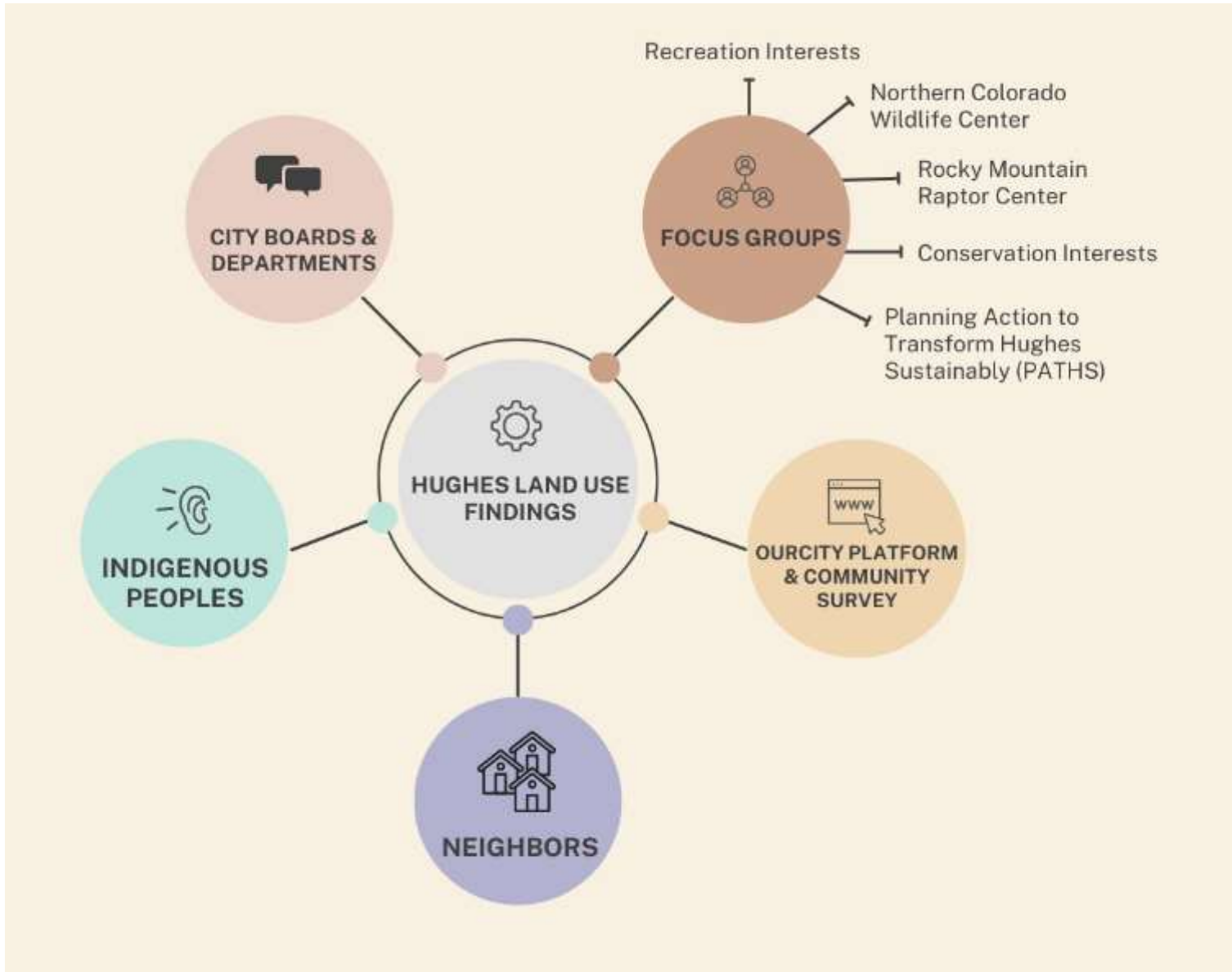
1950



2017



- In 2021, citizen-initiated petition to rezone the 164.56-acre Hughes Stadium to the Public Open Lands District for “**parks, recreation, and open lands, natural areas, and wildlife rescue and restoration.**”
- City re-zoned parcel to Public Open Lands (POL)
 - *Zoning designation or district for Natural Areas, Publicly-Owned Parks, and open lands which have a community-wide emphasis*
- City acquired land in 2023 for \$12 Million
- Internal payment agreement to balance out contributions based on final use (Parks/Natural Areas)



- Based on the 2021 ballot language, how would you prioritize the following uses?
- How would you like to see the space used?



Future of Hughes Stadium Site Survey (Survey #1) 2,710 unique responses

Based on the 2021 ballot language, how would you prioritize the following uses?

- 15% of respondents supported recreation
- 16% open lands
- 16% parks
- 11% natural areas
- 18% wildlife rescue and restoration

Future of Hughes Stadium Site Survey (Survey #2) 1,896 unique responses

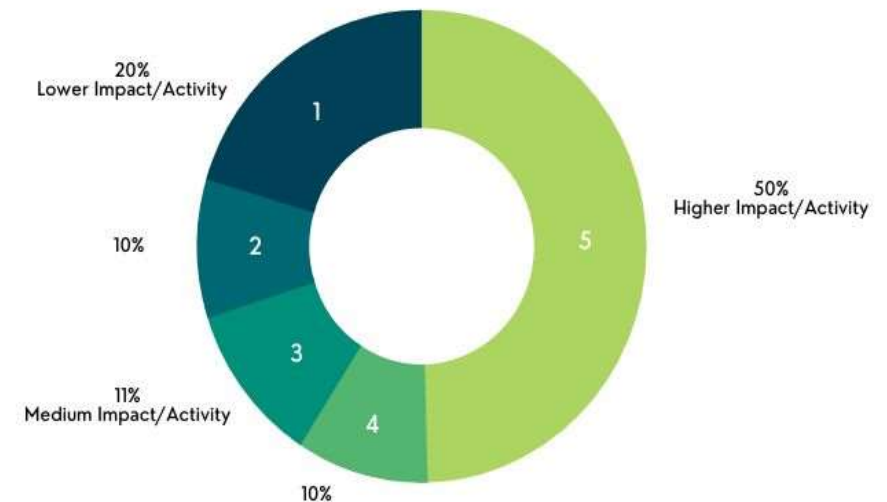
Desired Level of Impact

High preferences were voiced for trail connections and improvements, a bike park, a Nordic skiing course, land restoration, restrooms, and a cross-country running course.

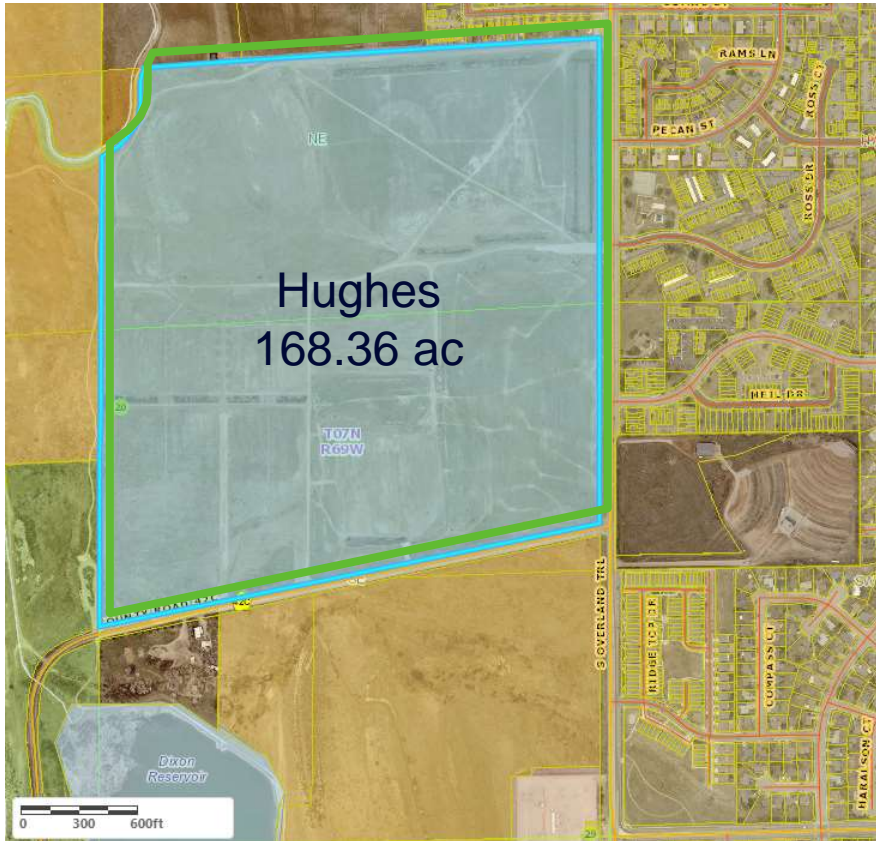
FUTURE OF HUGHES COMMUNITY PRIORITIZATION SURVEY

RESULTS

Q: What level of activity would you prefer to potentially see on the site?



Community Park Comparison



Rolland Moore
68 ac

City Park
77 ac

Twin Silo
53 ac

Spring Canyon
123 ac

Fossil Creek
79 ac

Edora
core: 49 ac

Martinez
48 ac

Purpose:

Set expectations and vision for final use plan.

Proposed Principles:

- Develop a plan that meets the ballot language, is contextually appropriate for site location, can be implemented over time.
- Create integrated, multi-use spaces that can serve the community year-round.

Civic Assembly

Q2/24:

Coordinate plan with partners

Q3/24:

Outreach and education campaign with the public

Q4/24:

Randomized mailing and Assembly selection

Q1/25:

Begin Assembly

Q2/25:

Present recommendation to Council

Internal Process

Q2/24:

Develop outreach plan and budget

Q3 & Q4/24:

Begin outreach opportunities

Q4/24:

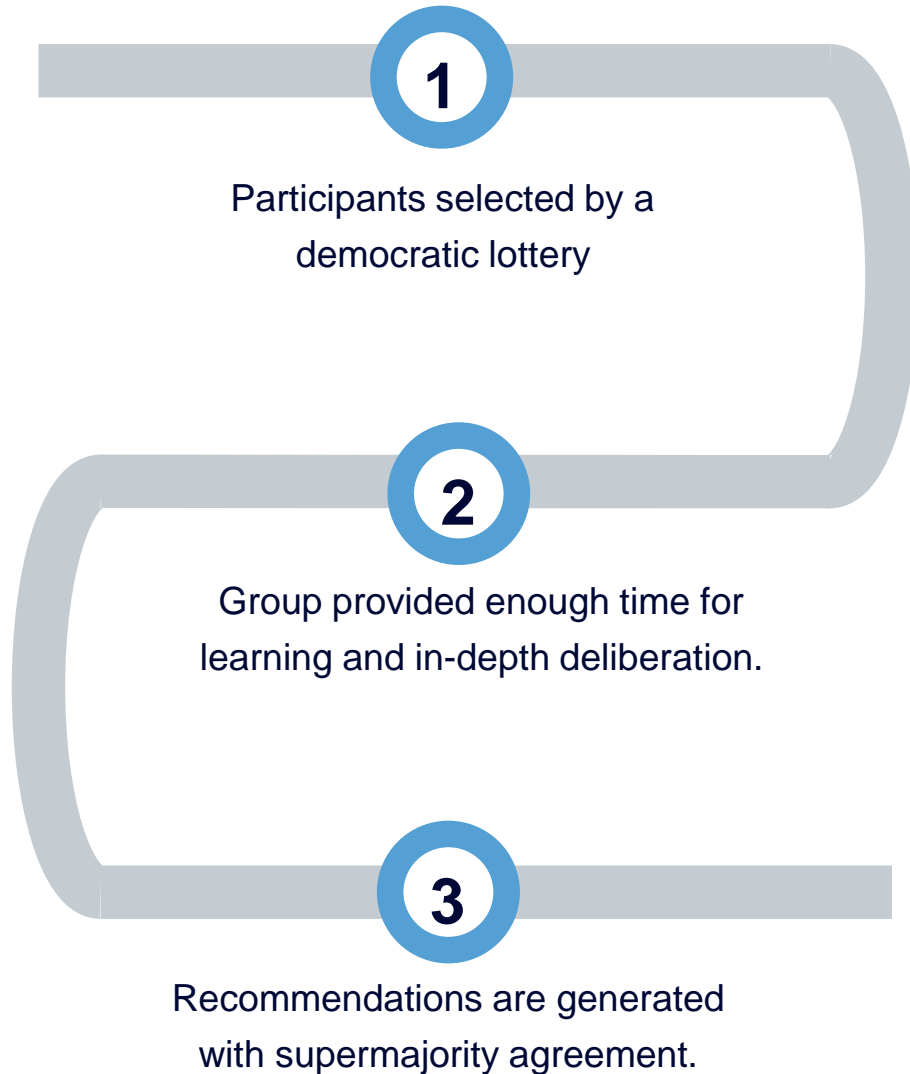
Council update

Q1/25:

Develop site plan options/drawings & continue outreach

Q2/25:

Present recommendation to Council



Civic Assemblies:

- Bring together a representative group of everyday people through a lottery process.
- Provide education and opportunity to learn, discuss complex issues, hear from other residents.
- Work through complex and polarizing issues to create common ground.
- Can resolve tough issues, engage all voices, and foster social cohesion.

QUESTIONS:

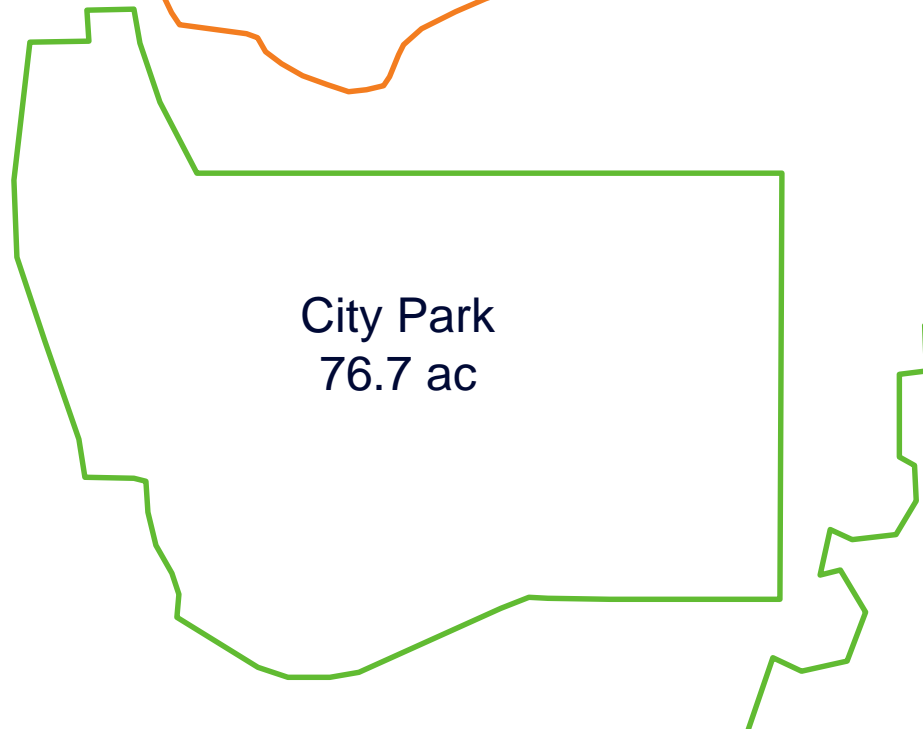
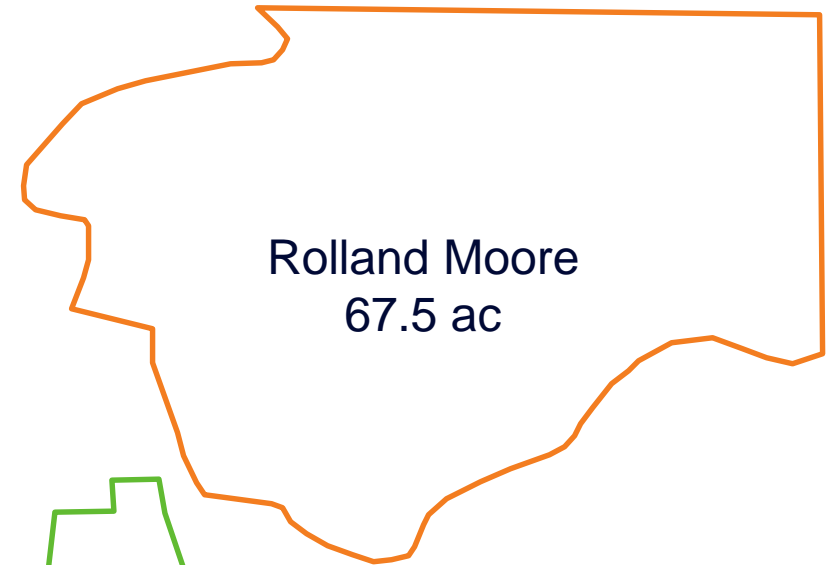
1

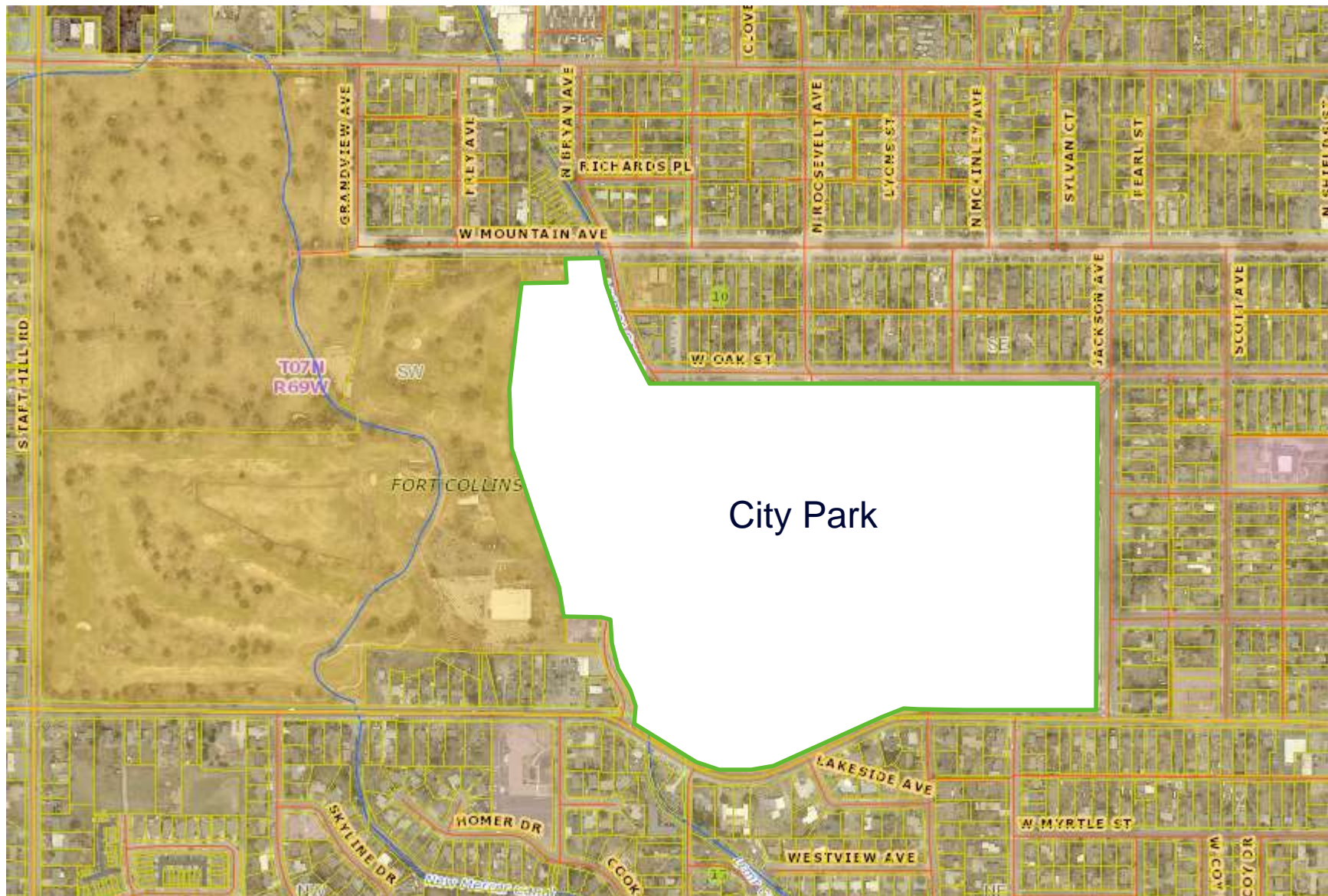
What feedback do Councilmembers have regarding the guiding principles?

2

What feedback do Councilmembers have on utilizing a People's Assembly vs. an in-house engagement process?

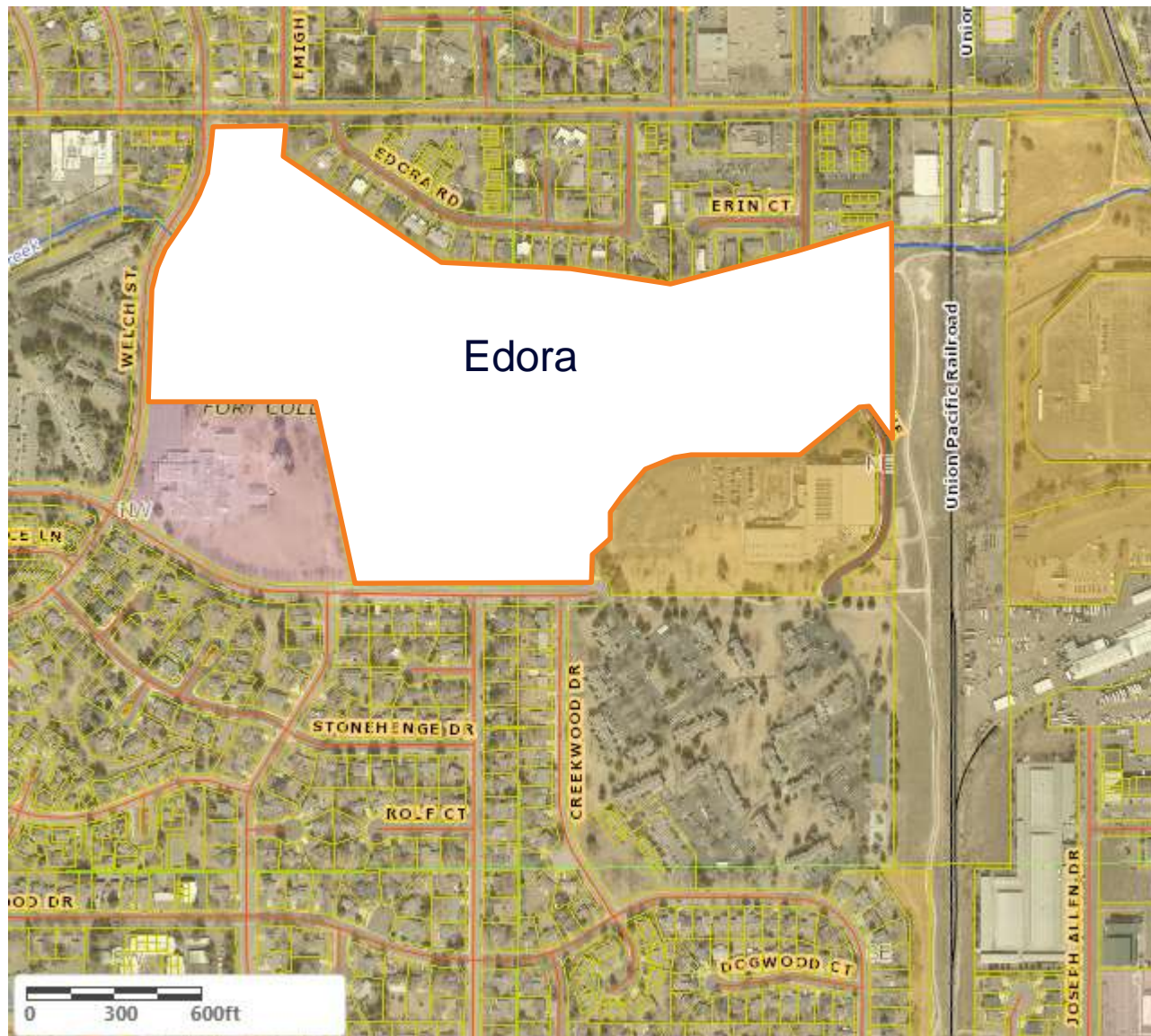
At larger scale

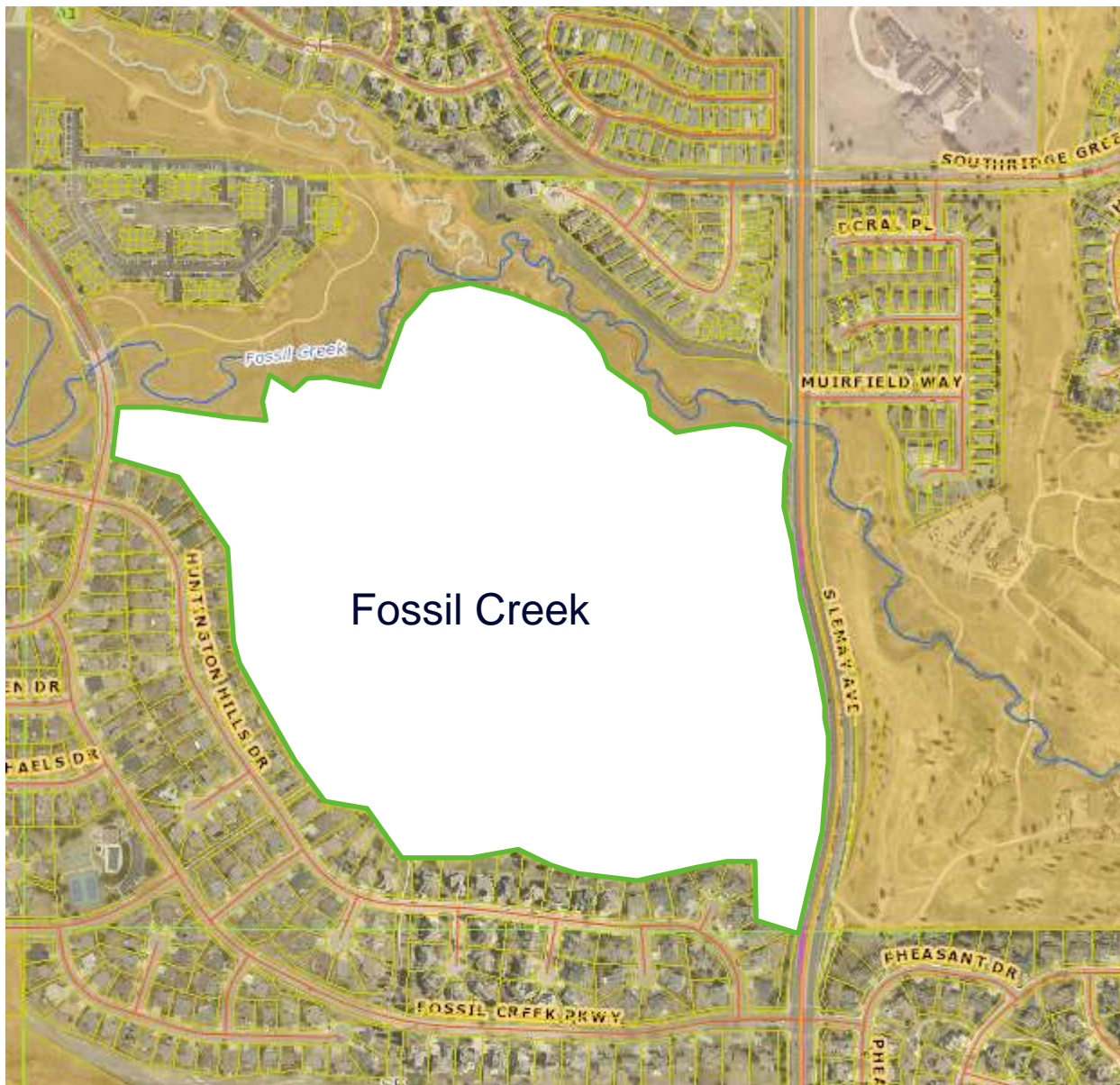


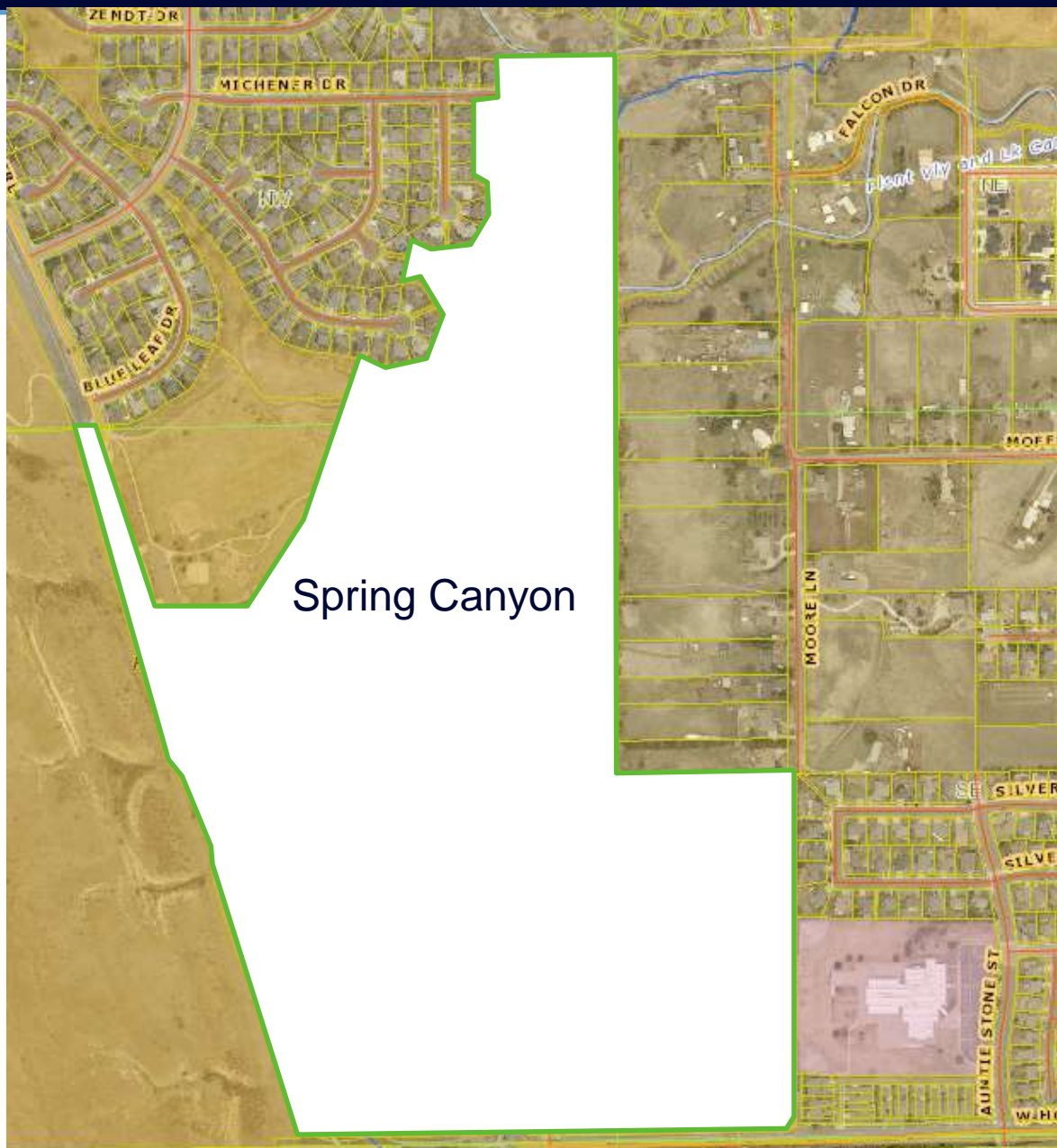


City Park









Spring Canyon



