

Front Range Passenger Rail and Joint Service

Resolution for Support

Caryn Champine, Director, PDT
Seth Lorson, Senior
Transportation Planner



Does City Council support Resolution 2026-090 Supporting the Front Range Passenger Rail District's Narrative Summary for Proposed Fort Collins Station and the Development of Passenger Rail Service Along the Front Range?

- Expresses support for Front Range Passenger Rail (FRPR)
- Adopts the narrative included with the resolution
- Agrees to accept FRPR District's local return money (approximately \$3.3M/yr. for 25 years)

Joint Service Overview

Starter service from Fort Collins to Denver funding already in place:

Frequency: 3 round trips per day, 7 days a week

Station Locations: 8 stations

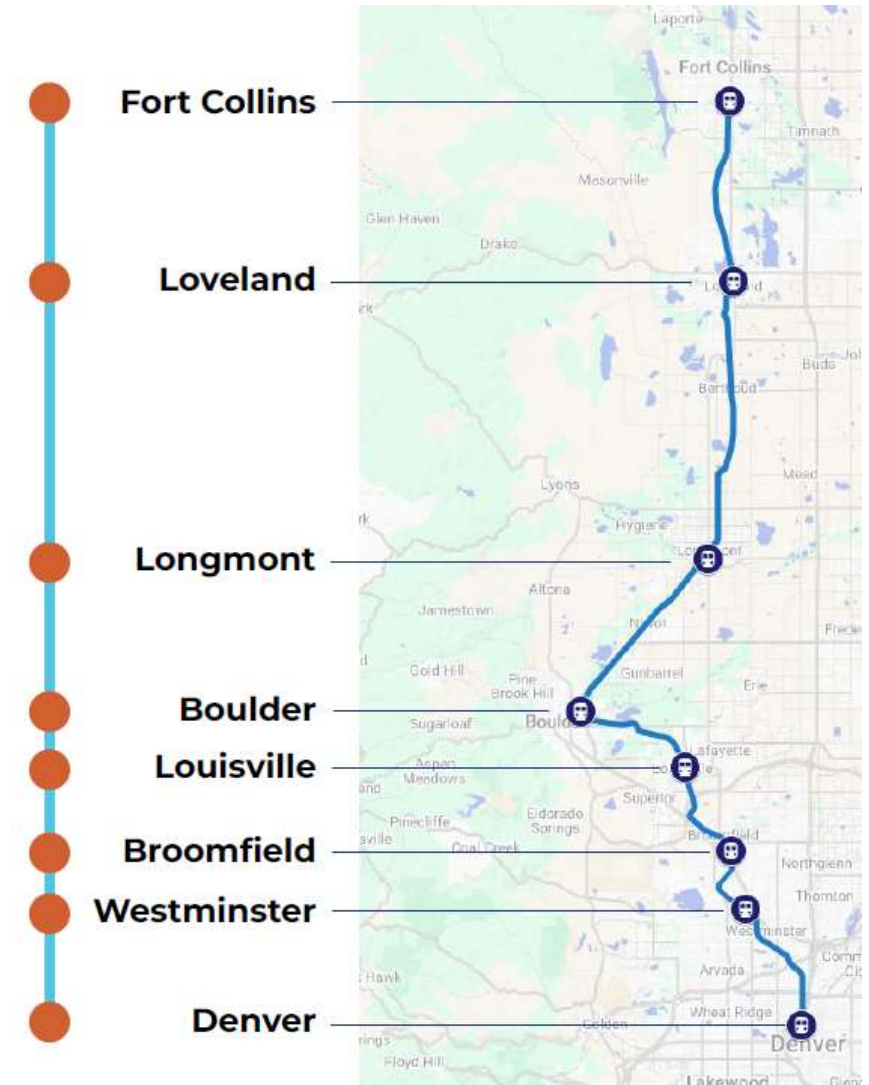
Distance: 69 track miles

Travel Time (estimated): 1 hour 40 minutes including station stops and recovery

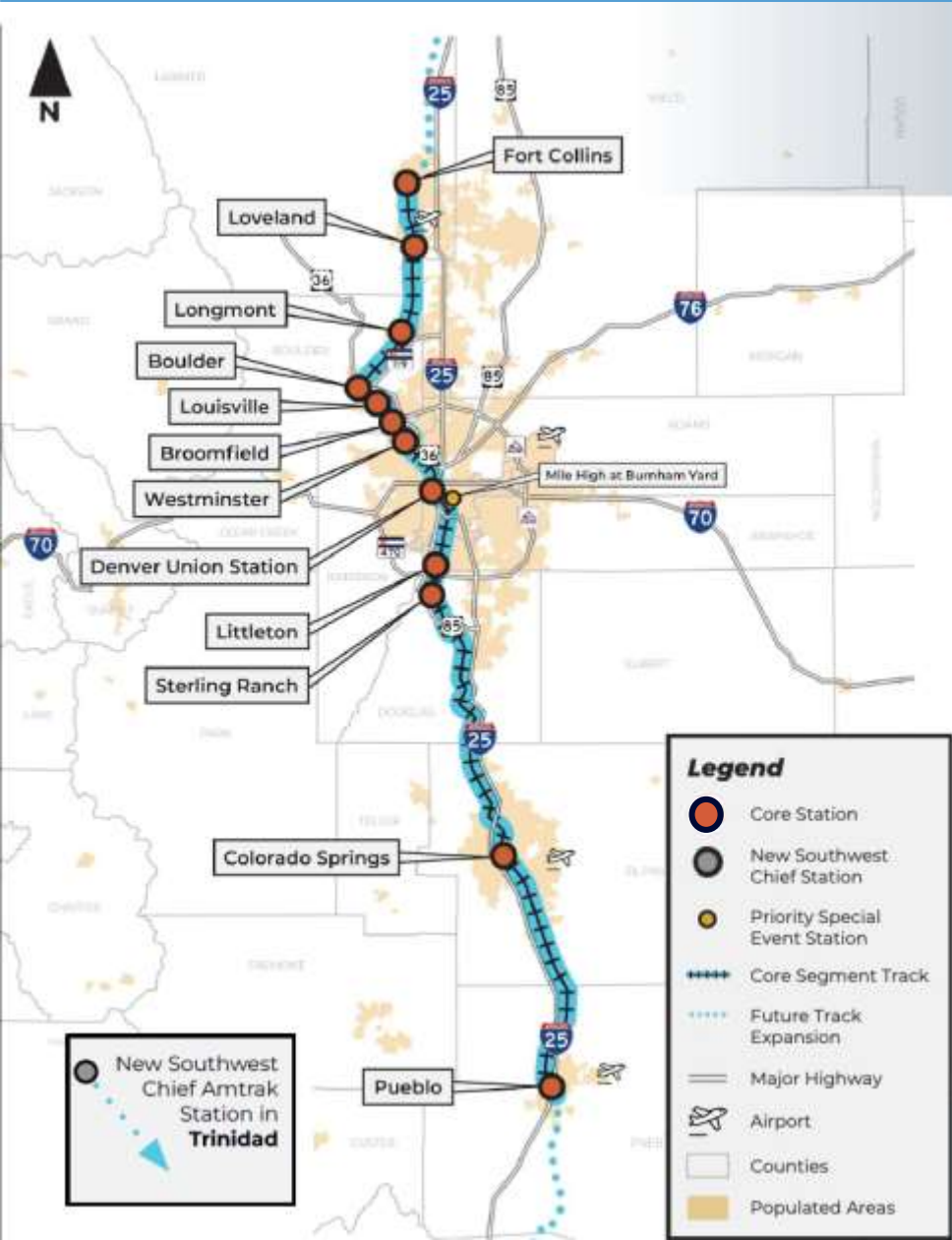
Cost Efficiency: 60%+ lower cost vs. prior estimates

Expedited delivery: 2029 start vs. 2050+ from RTD alone, made possible by a direct access agreement with BNSF

Host Railroads: BNSF from Fort Collins to Westminster; RTD from Westminster to Denver Union Station



Full Service Overview



Full service from Fort Collins to Pueblo with additional local investment in Trinidad:

Frequency: Up to 10 round trips per day by 2045

Station Locations: 12 CoCo stations; 1 new Southwest Chief station in Trinidad

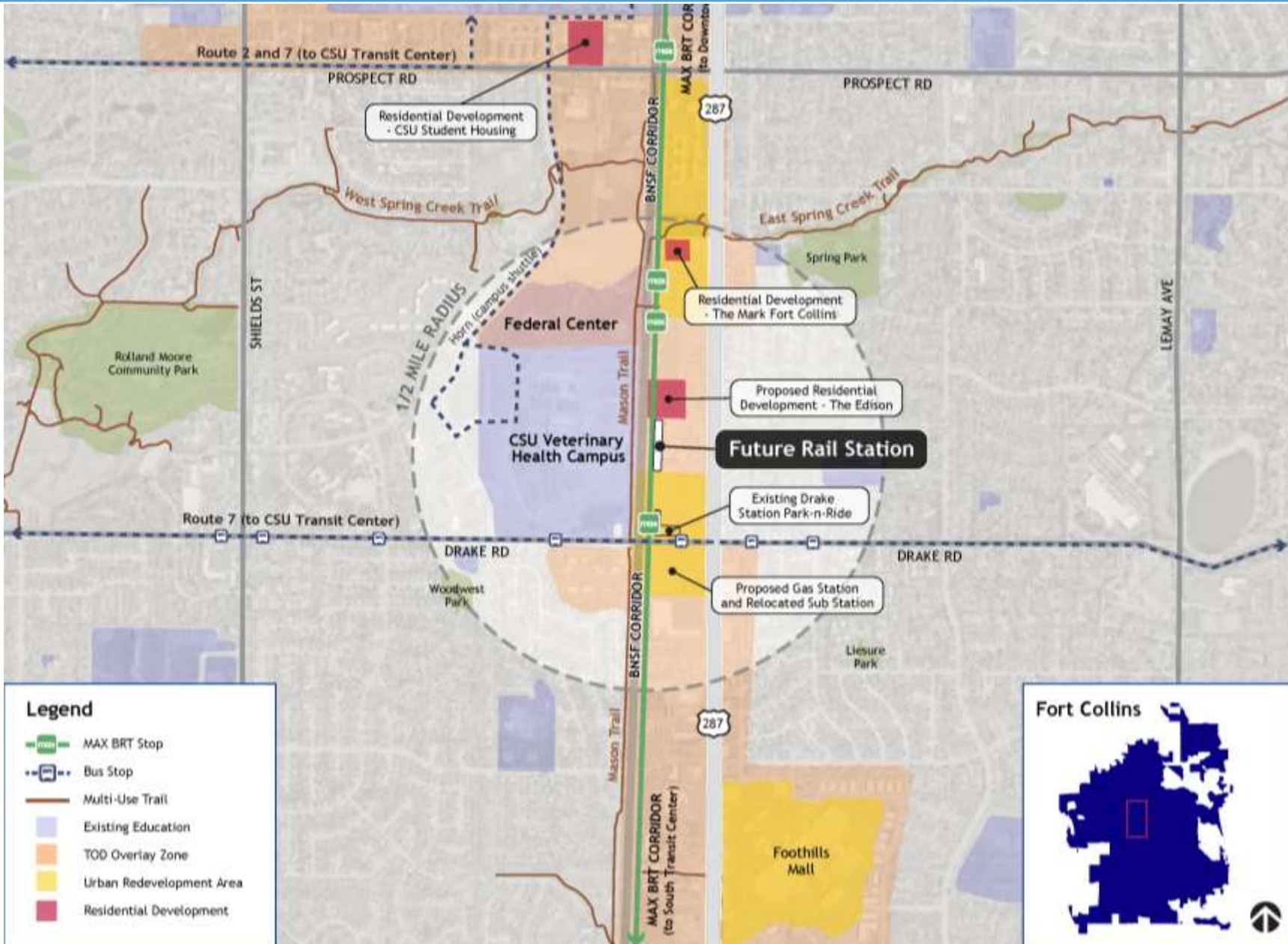
Distance: 190 track miles

Travel Time (estimated): 1h 40m from Fort Collins to Denver; 2h 40m from Denver to Pueblo (top speed 79 miles per hour)

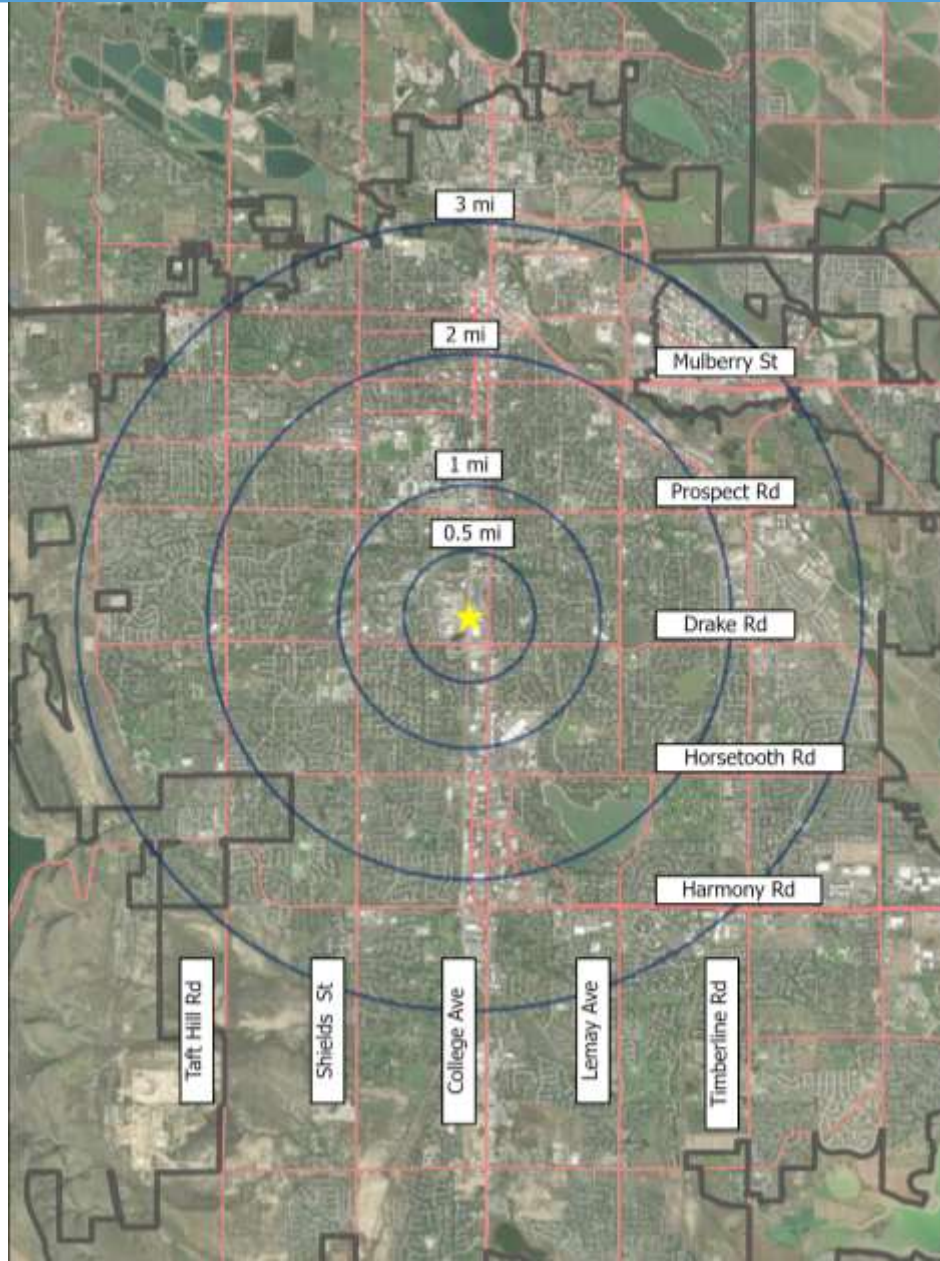
Equipment: Most likely dual-mode (electric + low-emission diesel)

Host Railroads: BNSF from Fort Collins to Westminster; RTD from Westminster to Denver Union Station; Union Pacific and BNSF from Denver to Pueblo

Drake Station Context



Drake Station Context



Distance from Drake Station	Population
Within 1/2 mile	1,751
Within 1 mile	14,517
Within 2 miles	66,546
Within 3 miles	119,815

★ Future Drake Station

— Major Streets

▭ City Limits

Distance from Drake Station

□ 0.5 mile

□ 1 mile

□ 2 miles

□ 3 miles



Does City Council support Resolution 2026-090 Supporting the Front Range Passenger Rail District's Narrative Summary for Proposed Fort Collins Station and the Development of Passenger Rail Service Along the Front Range?



Questions?