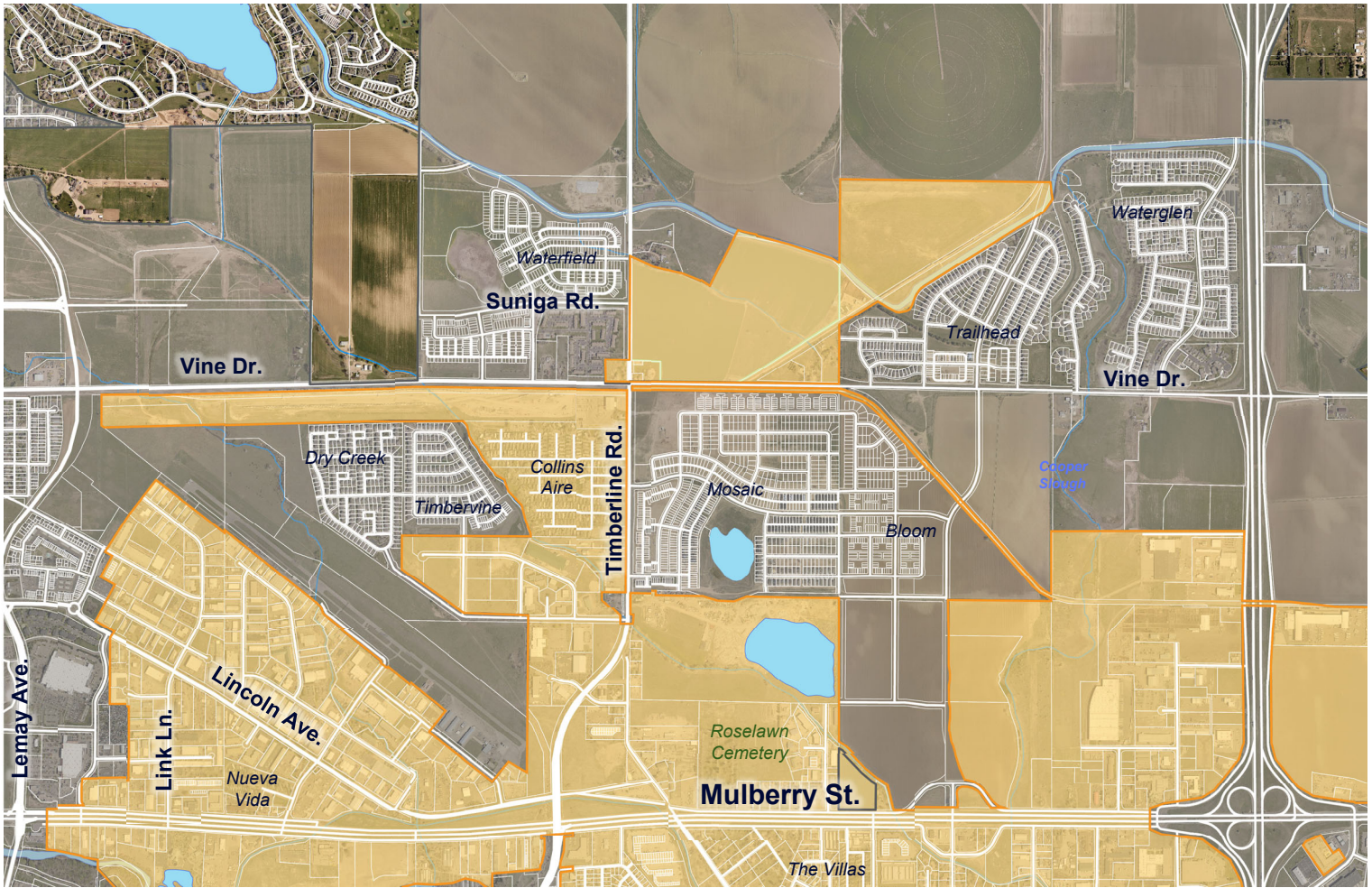




East Mulberry Potential Annexation Threshold Example

Attachment to the Agenda Item Summary for First Reading of the East Mulberry Plan

11-21-2023



- This map depicts the northern extent of the East Mulberry Enclave as it exists now

Legend:

- East Mulberry Enclave
- Fort Collins City Limits

↑
N



Considerations & Sequencing:

- **Development Activity:**
 - The City has received a Preliminary Design Review submittal for a property near Vine Dr. and Timberline Rd.
 - Development would require annexation

Legend:

- East Mulberry Enclave
- Fort Collins City Limits





Considerations & Sequencing:

- **Potential Threshold met:**
 - Annexation of the parcels near Vine and Timberline create 'islands' of parcels now physically disconnected
- ↓
- Maintaining logical boundaries threshold
- +
- Proactive resource protection/Achievement of Citywide Policy Priority

- Legend:**
- East Mulberry Enclave
 - Fort Collins City Limits



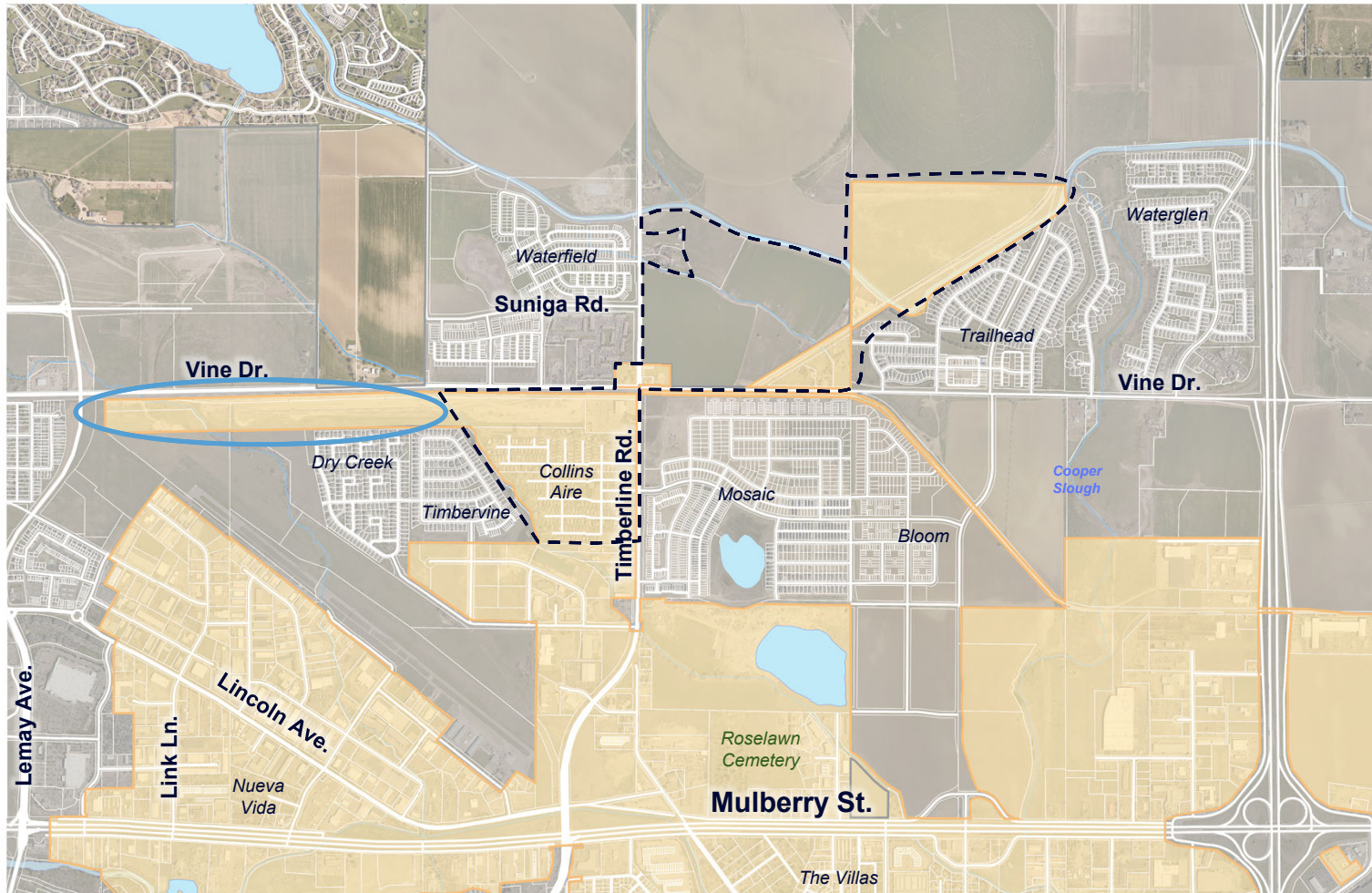


Considerations & Sequencing:

- **Potential Threshold:**
 - Proximity of the Collins Aire Mobile Home Park may offer an opportunity to bring this community into City Limits
- ↓
- Proactive resource protection/Achievement of Citywide Policy Priority

- Legend:**
- East Mulberry Enclave
 - Fort Collins City Limits





Considerations & Sequencing:

- **Potential Threshold met:**
 - The addition of the Collins Aire Mobile Home Park for annexation consideration would create another 'island' along Vine Dr.
- ↓
- Maintaining logical boundaries threshold

Legend:
 East Mulberry Enclave
 Fort Collins City Limits





Considerations & Sequencing:

- In this case, multiple thresholds are combined to establish potential annexation boundaries for further analysis and City Council decision

Legend:

- East Mulberry Enclave
- Fort Collins City Limits

↑
N