

School Traffic Safety Inspection Program

Nell Davis

Traffic Operations – Technical
Projects Manager





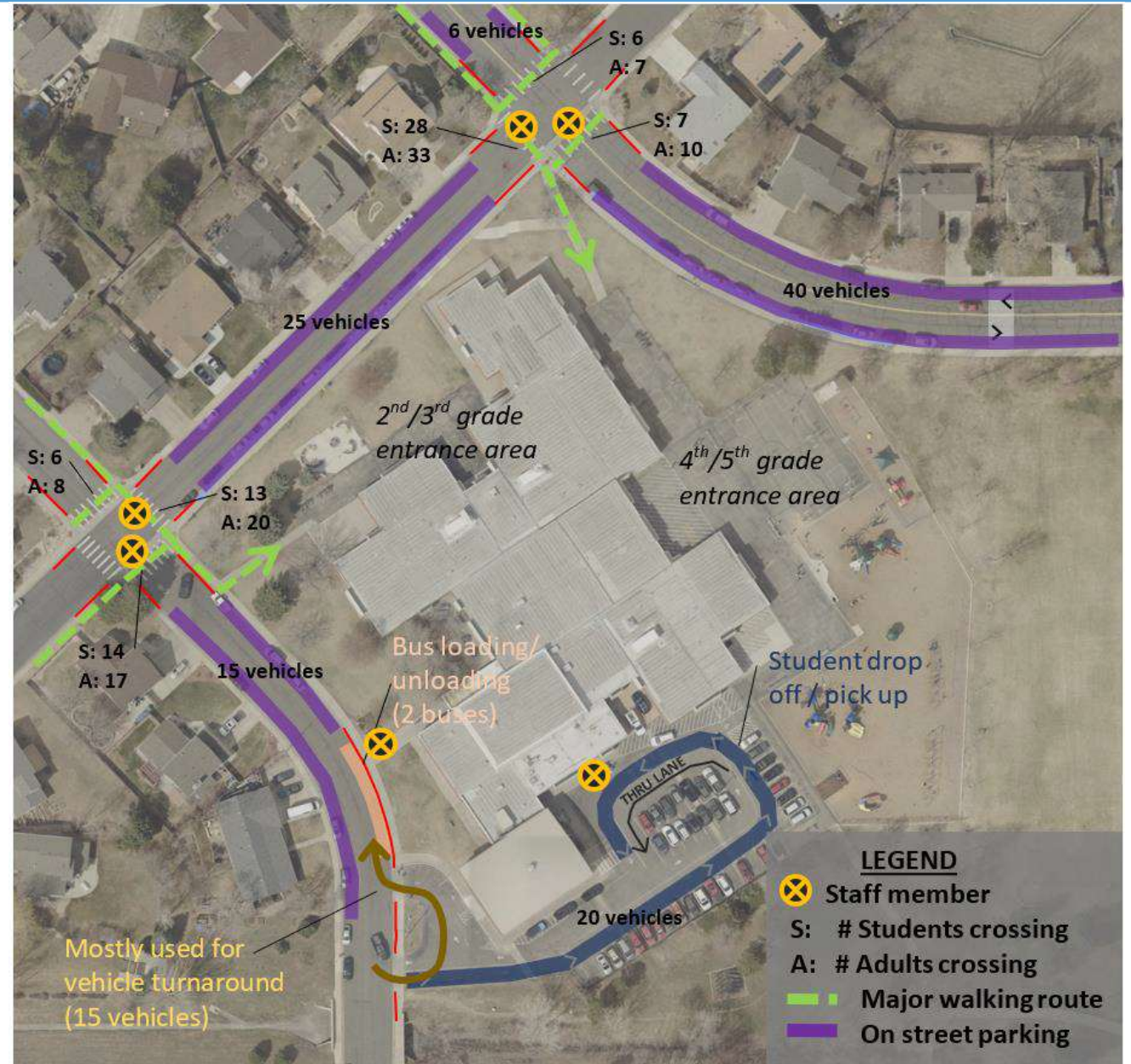
- Changes in population and traffic patterns since schools were built
- Safety improvements applied inconsistently citywide
 - Complaints were the main driver of safety improvements
- Consultant engaged to establish School Traffic Safety Inspection Program
 - Develop process
 - Toolkit of school safety practices and improvements



- Systematic inspection
- Investigate all aspects of transportation around schools
- All modes of travel—personal vehicle, bus, bike, foot
- Behaviors of staff, parents, and students
- Create a whole-picture report of strengths and weaknesses
- Recommend improvements
 - Education
 - Enforcement
 - Infrastructure
 - Maintenance
 - Operations best practices

Study Process: Investigation

- Two to six schools per school year
- Meet with district and school staff
- Observe pickup/drop-off traffic
- Conduct traffic studies of corridors, intersections
- Inventory existing signs and pavement markings





Study Process: Recommendations

Education

- Instructions for parents
- Training for staff
- Safety lessons for students

Enforcement

Maintenance

- Refresh pavement markings
- Replace signs

Infrastructure

- Sidewalks
- Bike lanes
- Crosswalks
- Signals

Operations

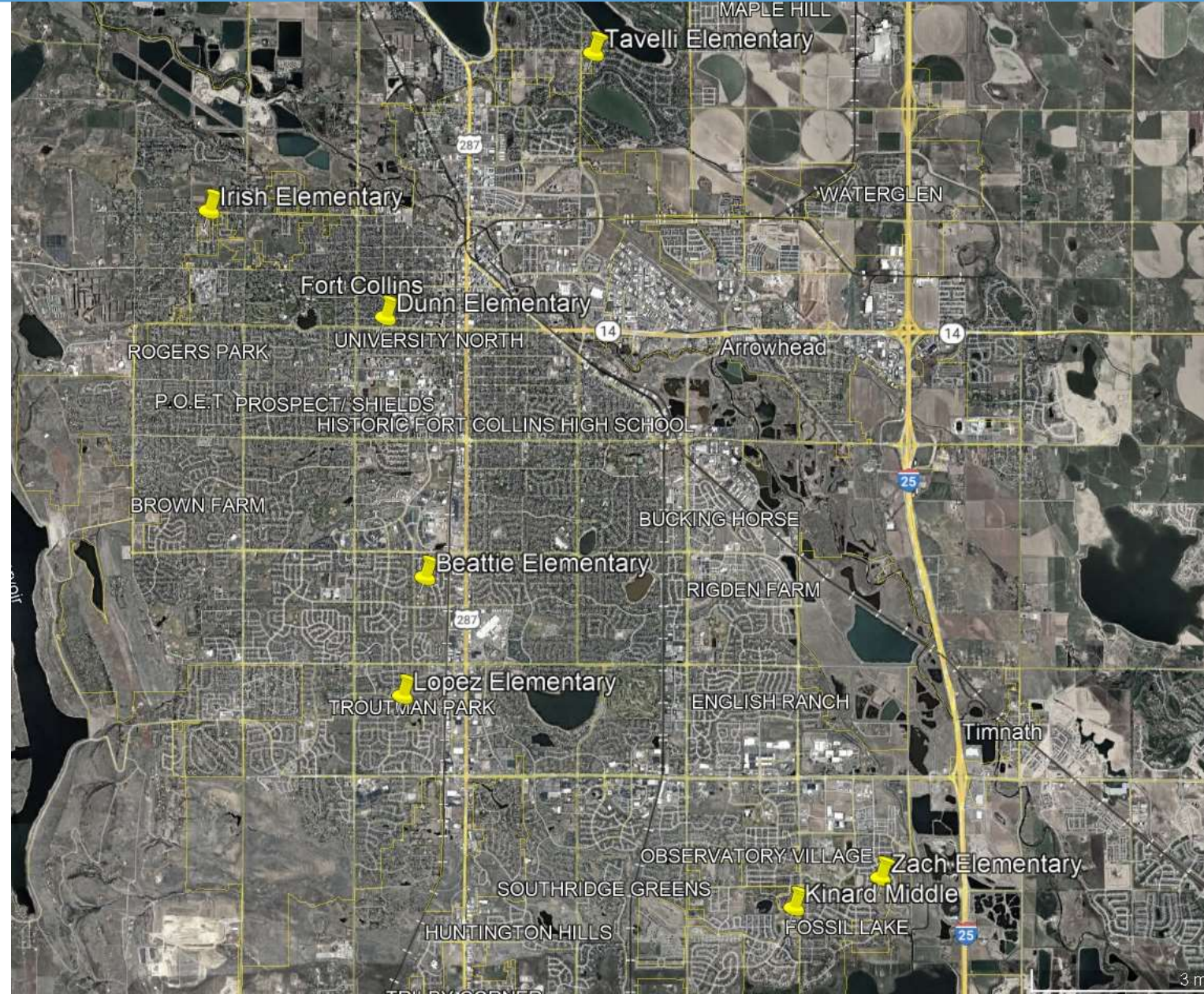
- Separate travel modes
- Appoint crossing guards

- Maintenance and minor improvements over summer break
- Coordinate education, enforcement, and operation changes with school staff and police
- Seek grants or other opportunities for large projects
- Not all schools need big projects



Completed studies

- Zach Elementary School (2022)
- Lopez Elementary School (2022)
- Irish Elementary Escuela Bilingüe (2024)
- Dunn Elementary School (2024)
- Tavelli Elementary School (2024)
- Beattie Elementary School (2024)
- Kinard Middle School (2024)



- Minor recommendations addressed immediately
- Grant applications
- Training program for kindergarten teachers to teach pedestrian safety



Results: Zach Elementary

- Convert Jupiter & Kechter to a fully signalized intersection
- Install median refuge and RRFB at Cinquefoil & Kechter
- Construction summer 2025
- Received grant for \$750,000



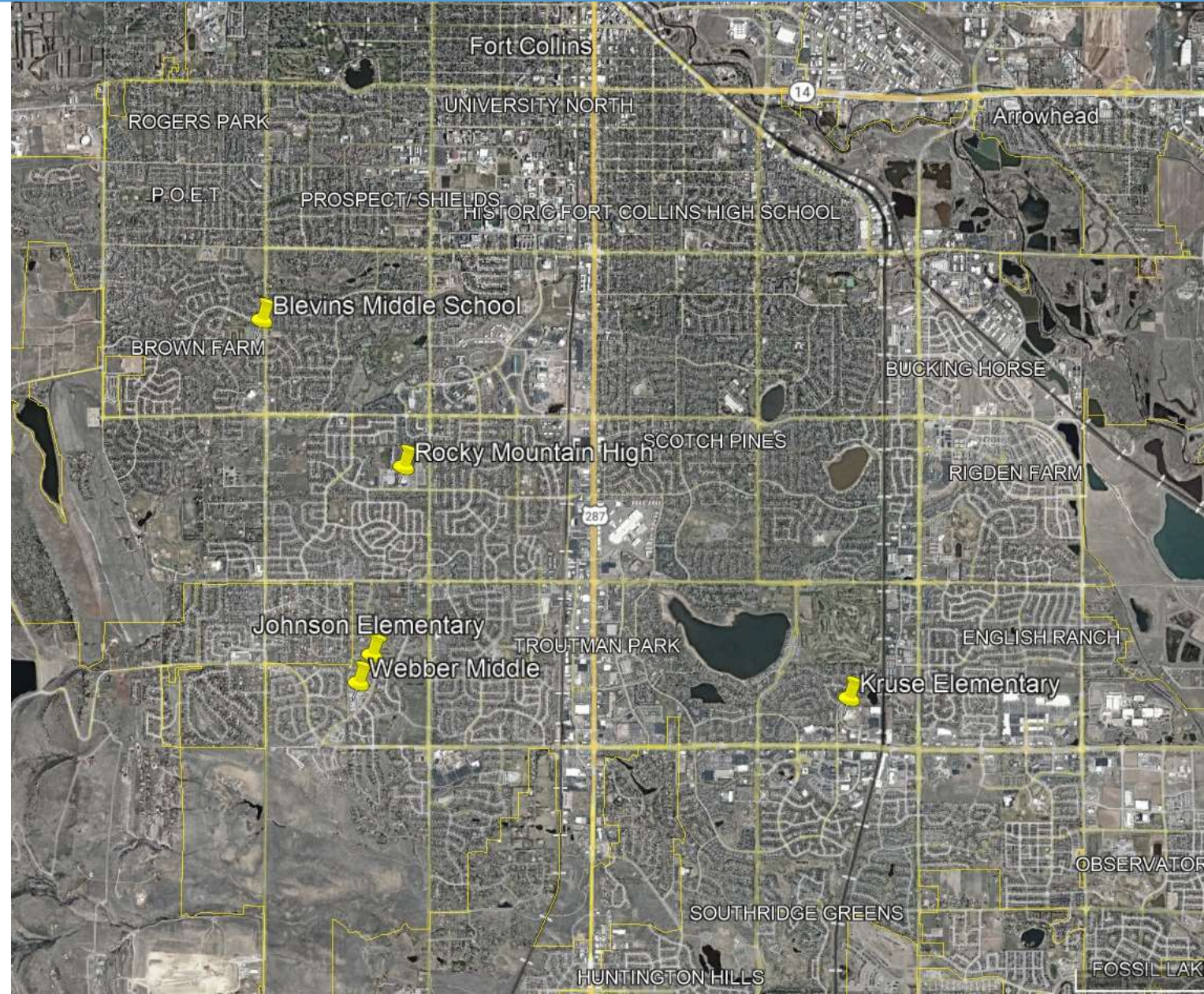
Results: Lopez Elementary

- Existing staff at nearby intersections highly effective
- Installed speed humps on Manhattan Ave
- Installed curb extensions at Wabash & Benthaven
- Created education program for kindergarteners



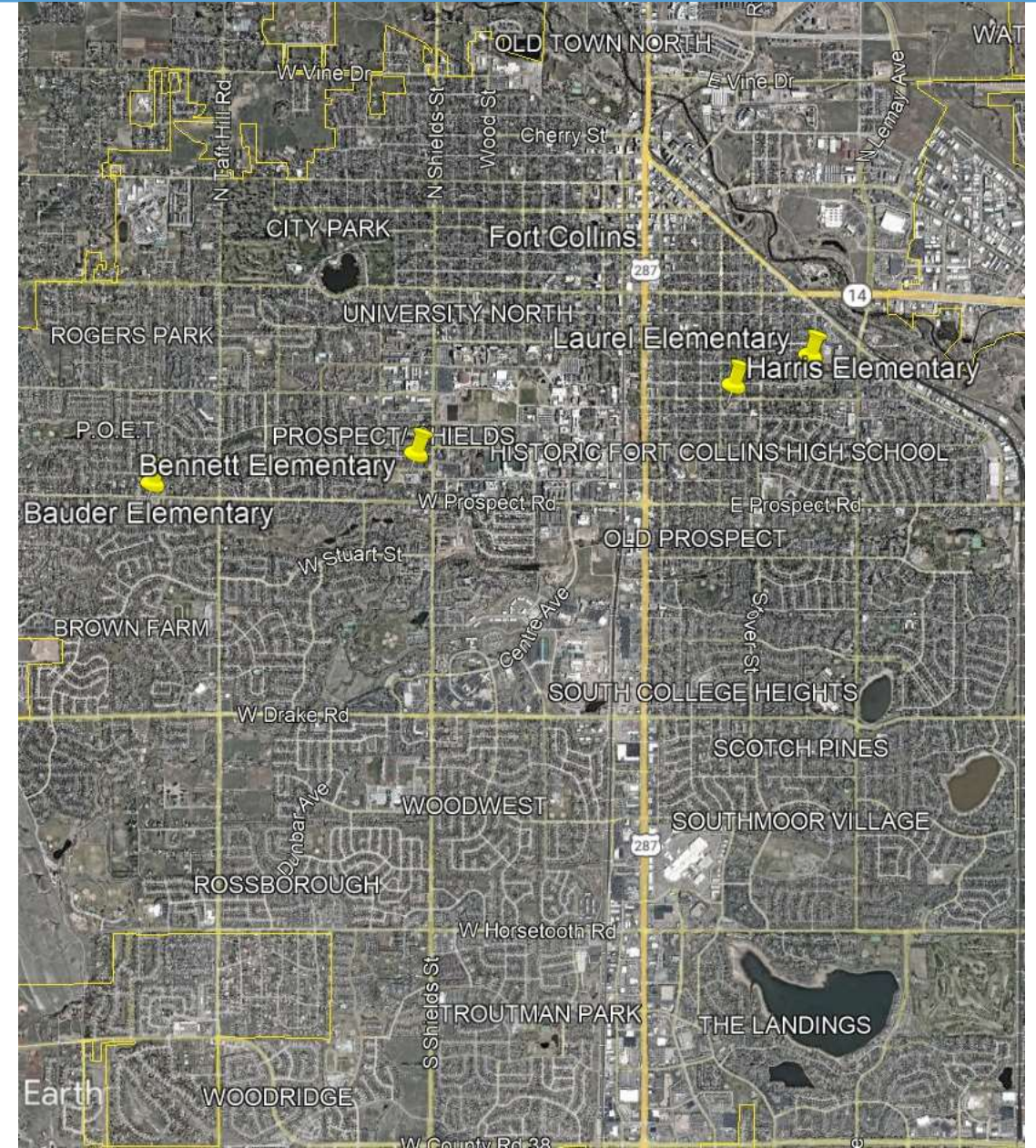
Studies in progress

- Blevins Middle School
- Kruse Elementary School
- Johnson Elementary School
- Webber Middle School
- Rocky Mountain High School



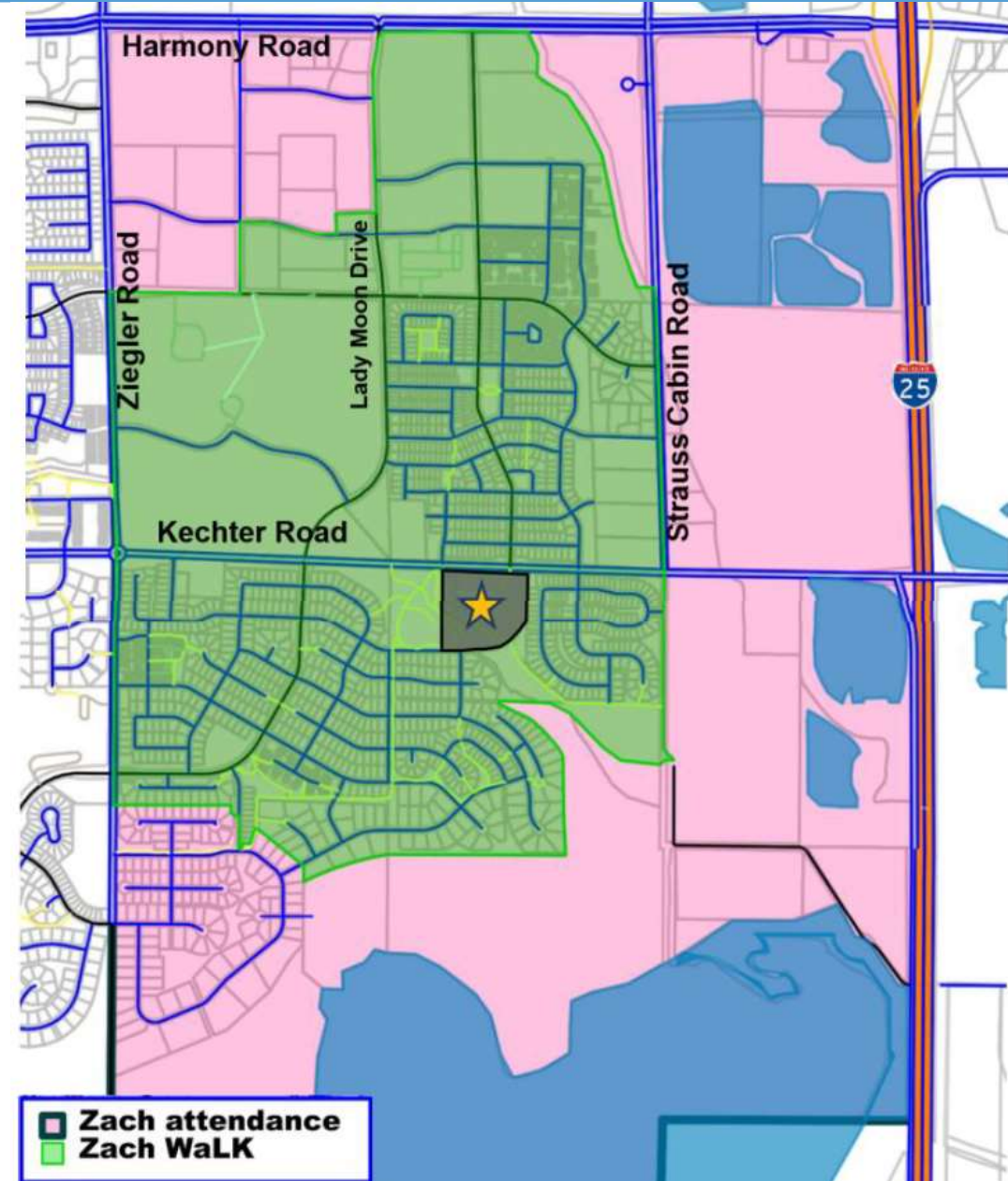
Tentative list for 25-26 school year

- Bauder Elementary
- Laurel Elementary
- Bennett Elementary
- Harris Elementary



Future

- School prioritization criteria
 - K-5 students
 - High number of marginalized and low-income students
 - Adjacent to high-speed roads
 - Public interest
 - School or District interest
 - Upcoming projects in the area
- Estimated completion: 2034
- After all schools inspected, start over





Thank you!

Neil Davis
ndavis@fcgov.com

Draft schedule: 53 public and private schools



- Completed
 - Lopez, Zach, Dunn, Irish, Beattie, Tavelli, Kinard
- In progress
 - Johnson, Kruse, Rocky Mountain, Blevins, Webber
- 2025
 - Bauder, Harris, Laurel, Bennett
- 2026 – 2029
 - Axis International Academy, Bacon, CEC, Coyote Ridge, Fort Collins, Leshar, Linton, Montessori, Odea, Olander, PSD Global Academy, Polaris, Putnam, Ridgeview, Riffenburgh, Rivendell
- 2030-3034
 - Academy of Arts & Knowledge, Boltz, Centennial, Christian Core Academy, Cottonwood Plains, Fort Collins Christian School, Fossil Ridge, Front Range Baptist Academy, Grace Academy, Heritage Christian Academy, Liberty Commons, Lincoln, McGraw, Mountain Sage, Poudre, Poudre Community Academy Preston, Shepardson, St Joes, Traut, Werner

Results: Irish Elementary

- Applied for \$835K grant
- Add pedestrian connections between trail and school
- Add crossing improvements on Vine Dr., Irish Dr.

