

Trail Easement

(Page 1 of 3)

EXHIBIT A

PROJECT NUMBER: MTF M455-147

PROJECT CODE: 25298

DATE: January 2, 2024

DESCRIPTION

A parcel of land for the Department of Transportation, State of Colorado, Project No. MTF M455-147, containing 13,120 sq. ft (0.301 acres), more or less, being part of Tract A, Centre for Advanced Technology 22nd Filing, Community Horticulture Center, as recorded April 2, 2003 as Reception No. 20030039524 of the Records of the Larimer County Clerk and Recorder, situate in the Northeast Quarter (NE1/4) of Section Twenty-three (23), Township Seven North (T.7N.), Range Sixty-nine West (R.69W.) of the Sixth Principal Meridian (6th P.M.), City of Fort Collins, County of Larimer, State of Colorado and being more particularly described as follows:

PARCEL A:

COMMENCING at the Northeast corner of said Tract A, whence the North Quarter Corner of said Section 23 bears North 38°42'21" West a distance of 1,246.74 feet;

1. THENCE along the northwesterly line of Tract A the following two courses;
2. THENCE South 47°23'53" West a distance of 89.30 feet to a Point of Curvature (PC);
3. THENCE along the arc of a curve concave to the southeast a distance of 58.68 feet, having a Radius of 300.00 feet, a Delta of 11°12'28" and is subtended by a Chord that bears South 41°47'40" West a distance of 58.59 feet to a Point of Tangency (PT) and the POINT OF BEGINNING;
4. THENCE South 10°21'27" West a distance of 168.08 feet to a PC;
5. THENCE along the arc of a curve concave to the northwest a distance of 52.81 feet, having a Radius of 114.00 feet, a Delta of 26°32'29" and is subtended by a Chord that bears South 23°37'41" West a distance of 52.34 feet to a PT;
6. THENCE South 36°53'55" West a distance of 78.36 feet to the west line of Tract A and the beginning point of a curve, non-tangent to the aforesaid line, which point is herein referred to as **POINT A**;
7. THENCE along the arc of a curve concave to the east a distance of 38.82 feet, having a Radius of 150.00 feet, a Delta of 14°49'35" and is subtended by a Chord that bears North 13°54'40" West a distance of 38.71 feet;
8. THENCE departing the west line of Tract A, North 36°53'55" East, along a line non-tangent to the aforesaid curve, a distance of 53.90 feet to a PC;
9. THENCE along the arc of a curve concave to the northwest a distance of 38.91 feet, having a Radius of 84.00 feet, a Delta of 26°32'29" and is subtended by a Chord that bears North 23°37'41" East a distance of 38.56 feet to a PT;
10. THENCE North 10°21'27" East a distance of 91.03 feet to the northwesterly line of Tract A;
11. THENCE along said northwesterly line the following two courses;
12. THENCE North 30°39'49" East a distance of 53.78 feet to a PC;
13. THENCE along the arc of a curve concave to the southeast a distance of 28.94 feet, having a Radius of 300.00 feet, a Delta of 05°31'37" and is subtended by a Chord that bears North 33°25'37" East a distance of 28.93 feet to the POINT OF BEGINNING;

TOGETHER WITH

PARCEL B

COMMENCING at the aforementioned **POINT A**;

1. THENCE along the westerly line of Tract A the following four courses;
2. THENCE along the arc of a curve concave to the east a distance of 11.14 feet, having a Radius of 150.00 feet, a Delta of 04°15'16" and is subtended by a Chord that bears South 23°27'06" East a distance of 11.14 feet to a Point of Tangency (PT);
3. THENCE South 25°34'44" East a distance of 22.84 feet;
4. THENCE South 55°09'28" West a distance of 20.69 feet;
5. THENCE North 85°17'24" West a distance of 21.36 feet to a PC;
6. THENCE along the arc of a curve concave to the south a distance of 5.77 feet, having a Radius of 300.00 feet, a Delta of 01°06'10" and is subtended by a Chord that bears North 85°50'30" West a distance of 5.77 feet to the POINT OF BEGINNING;

7. THENCE along the arc of a curve concave to the east a distance of 20.61 feet, having a Radius of 76.00 feet, a Delta of 15°32'11" and is subtended by a Chord that bears South 22°26'34" West a distance of 20.55 feet to a PT;
8. THENCE South 14°40'29" West a distance of 145.15 feet to a PC;
9. THENCE along the arc of a curve concave to the west a distance of 13.22 feet, having a Radius of 104.00 feet, a Delta of 07°16'52" and is subtended by a Chord that bears South 18°18'55" West a distance of 13.21 feet to a PT;
10. THENCE South 82°37'54" East a distance of 4.50 feet;
11. THENCE South 05°00'38" West a distance of 9.79 feet;
12. THENCE South 89°46'52" West a distance of 38.94 feet;
13. THENCE North 06°55'23" West a distance of 11.38 feet;
14. THENCE North 85°44'54" East a distance of 4.50 feet;
15. THENCE North 23°46'08" East a distance of 8.64 feet to the beginning point of a curve, non-tangent to the aforesaid line;
16. THENCE along the arc of a curve concave to the west a distance of 11.75 feet, having a Radius of 74.00 feet, a Delta of 09°05'39" and is subtended by a Chord that bears North 19°13'18" East a distance of 11.73 feet to a PT;
17. THENCE North 14°40'29" East a distance of 145.15 feet to a PC;
18. THENCE along the arc of a curve concave to the east a distance of 106.00 feet, having a Radius of 106.00 feet, a Delta of 06°37'21" and is subtended by a Chord that bears North 17°59'09" East a distance of 12.25 feet to the northerly line of Tract A;
19. THENCE along the arc of a curve concave to the south a distance of 33.10 feet, having a Radius of 300.00 feet, a Delta of 06°19'19" and is subtended by a Chord that bears South 89°33'14" East a distance of 33.08 feet to the POINT OF BEGINNING.

Said described Permanent Easement contains 13,120 Square Feet (0.301 acres), more or less (±).

The justification of the above-described Permanent Easement is for construction, use and maintenance of Public Access Sidewalk, Electrical Service Lines, and all related activities.

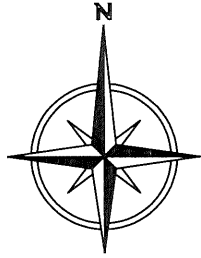
Basis of Bearings: Assuming the west line of the NE1/4 of Section 23, Township 7 North, Range 69 West, as bearing North 00°01'13" West, being a Grid Bearing of the Colorado State Plane Coordinate System, North Zone, North American Datum 1983/2011, a distance of 2,647.41 feet, being monumented by a #6 rebar with a 2.5" aluminum cap stamped LS 17497 at the North Quarter Corner and monumented by a 3.25" aluminum cap stamped LS 38480 at the Center Quarter Corner, and with all other bearings contained herein relative thereto.



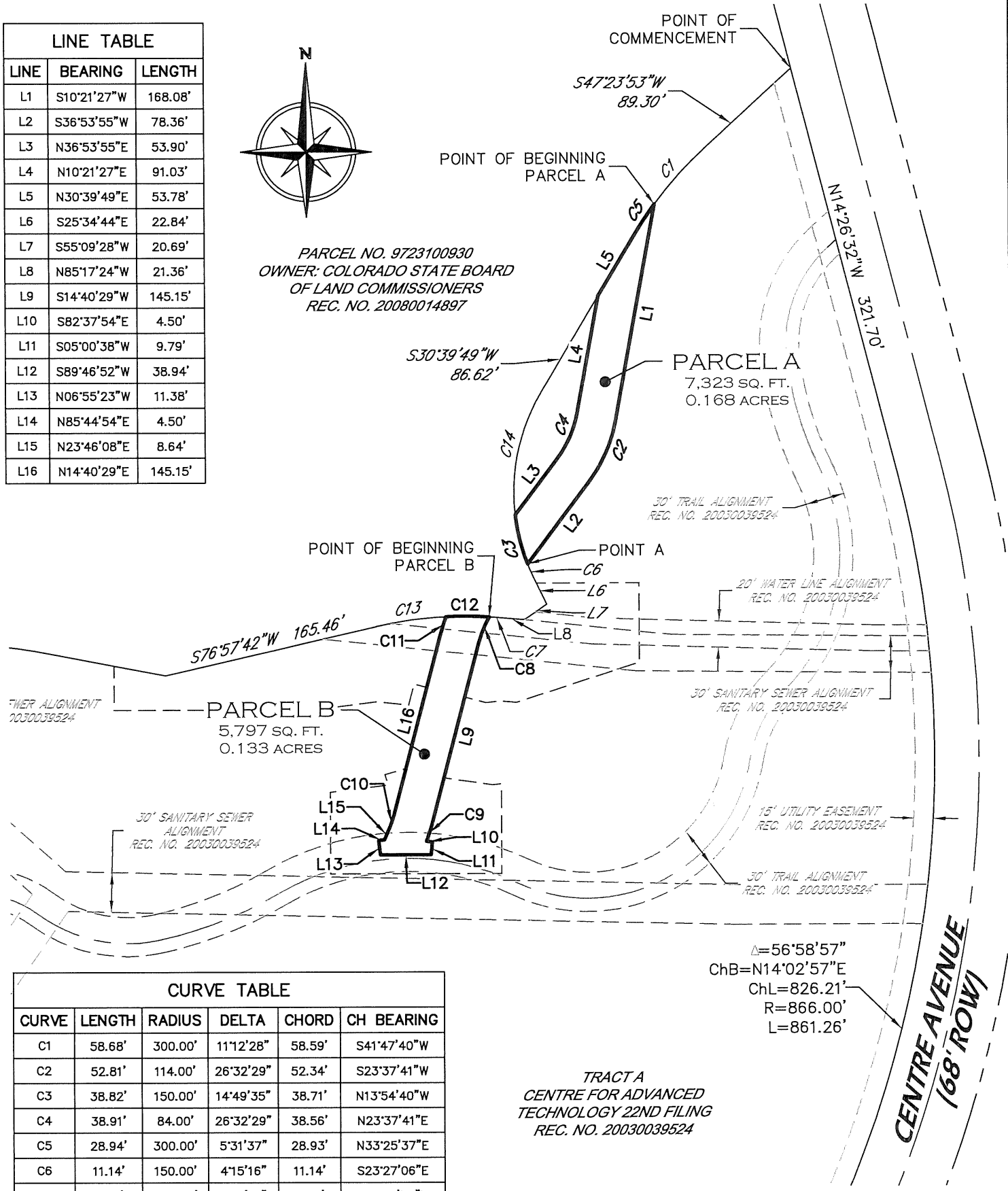
For and on behalf of Colorado State University, Fort Collins, Colorado.

Matthew A. Kramer - on behalf of Majestic Surveying, LLC
 Colorado Licensed Professional Land Surveyor #38844
 Majestic Surveying, LLC
 1111 Diamond Valley Drive, Suite 104
 Windsor, Colorado 80550

LINE TABLE		
LINE	BEARING	LENGTH
L1	S10°21'27"W	168.08'
L2	S36°53'55"W	78.36'
L3	N36°53'55"E	53.90'
L4	N10°21'27"E	91.03'
L5	N30°39'49"E	53.78'
L6	S25°34'44"E	22.84'
L7	S55°09'28"W	20.69'
L8	N85°17'24"W	21.36'
L9	S14°40'29"W	145.15'
L10	S82°37'54"E	4.50'
L11	S05°00'38"W	9.79'
L12	S89°46'52"W	38.94'
L13	N06°55'23"W	11.38'
L14	N85°44'54"E	4.50'
L15	N23°46'08"E	8.64'
L16	N14°40'29"E	145.15'



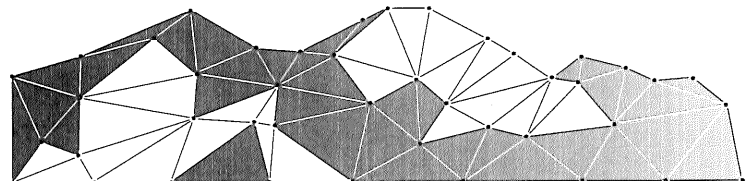
PARCEL NO. 9723100930
OWNER: COLORADO STATE BOARD
OF LAND COMMISSIONERS
REC. NO. 20080014897



CURVE TABLE					
CURVE	LENGTH	RADIUS	DELTA	CHORD	CH BEARING
C1	58.68'	300.00'	11°12'28"	58.59'	S41°47'40"W
C2	52.81'	114.00'	26°32'29"	52.34'	S23°37'41"W
C3	38.82'	150.00'	14°49'35"	38.71'	N13°54'40"W
C4	38.91'	84.00'	26°32'29"	38.56'	N23°37'41"E
C5	28.94'	300.00'	5°31'37"	28.93'	N33°25'37"E
C6	11.14'	150.00'	4°15'16"	11.14'	S23°27'06"E
C7	5.77'	300.00'	1°06'10"	5.77'	N85°50'30"W
C8	20.61'	76.00'	15°32'11"	20.55'	S22°26'34"W
C9	13.22'	104.00'	7°16'52"	13.21'	S18°18'55"W
C10	11.75'	74.00'	9°05'39"	11.73'	N19°13'18"E
C11	12.25'	106.00'	6°37'21"	12.25'	N17°59'09"E
C12	33.10'	300.00'	6°19'19"	33.08'	S89°33'14"E
C13	54.05'	300.00'	10°19'24"	53.98'	S82°07'24"W
C14	97.29'	150.00'	37°09'42"	95.59'	S12°04'58"W

Note: This drawing does not represent a monumented land survey. Its sole purpose is a graphic representation of the accompanying written description.

Notice: According to Colorado law you must commence any legal action based upon any defect in this survey within three years after you first discover such defect. In no event may any action based upon any defect in this survey be commenced more than ten years from the date of the certification shown hereon. (CRS 13-80-105)



MAJESTIC SURVEYING

Matthew A. Kramer, PLS 38844
On behalf of Majestic Surveying, LLC

PROJECT NO: 2023256
DATE: 1-25-2024

CLIENT: CSU
SCALE: 1"=100'

EXHIBIT A
PROJECT NUMBER: MTF M455-147
PROJECT CODE: 25298
DATE: January 2, 2024
DESCRIPTION

A parcel of land for the Department of Transportation, State of Colorado, Project No. MTF M455-147, containing 10,981 sq. ft (0.252 acres), more or less, being part of Tract A, Centre for Advanced Technology 22nd Filing, Community Horticulture Center, as recorded April 2, 2003 as Reception No. 20030039524 of the Records of the Larimer County Clerk and Recorder, situate in the Northeast Quarter (NE1/4) of Section Twenty-three (23), Township Seven North (T.7N.), Range Sixty-nine West (R.69W.) of the Sixth Principal Meridian (6th P.M.), City of Fort Collins, County of Larimer, State of Colorado and being more particularly described as follows:

BEGINNING at a point on the northwesterly line of said Tract A, whence the North Quarter Corner of said Section 23 bears North 20°14'32" West a distance of 1,484.92 feet;

1. THENCE along the arc of a curve concave to the east a distance of 12.25 feet, having a Radius of 106.00 feet, a Delta of 06°37'21" and is subtended by a Chord that bears South 17°59'09" West a distance of 12.25 feet;
2. THENCE South 14°40'29" West a distance of 44.05 feet;
3. THENCE North 75°19'31" West a distance of 10.00 feet;
4. THENCE South 14°40'29" West a distance of 16.47 feet;
5. THENCE North 84°33'47" West a distance of 24.89 feet;
6. THENCE South 82°57'04" West a distance of 40.00 feet;
7. THENCE South 79°43'54" West a distance of 6.07 feet;
8. THENCE North 90°00'00" West a distance of 154.96 feet;
9. THENCE North 00°00'00" East a distance of 34.10 feet to the northerly line of Tract A;
10. THENCE along the northerly line of Tract A the following three courses;
11. THENCE South 79°11'44" East a distance of 40.24 feet;
12. THENCE North 76°57'42" East a distance of 165.46 feet to a Point of Curvature (PC);
13. THENCE along the arc of a curve concave to the south a distance of 54.05 feet, having a Radius of 300.00 feet, a Delta of 10°19'24" and is subtended by a Chord that bears North 82°07'24" East a distance of 53.98 feet to the POINT OF BEGINNING.

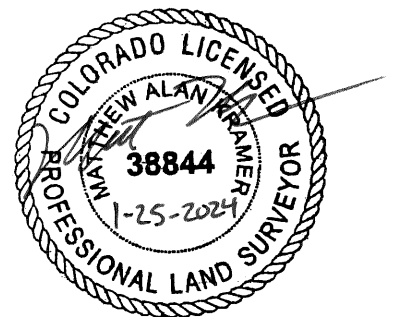
Said described Temporary Construction Easement contains 10,981 Square Feet (0.252 acres), more or less (±).

The justification of the above-described Temporary Construction Easement is for construction of Public Access Sidewalk and all related activities.

Basis of Bearings: Assuming the west line of the NE1/4 of Section 23, Township 7 North, Range 69 West, as bearing North 00°01'13" West, being a Grid Bearing of the Colorado State Plane Coordinate System, North Zone, North American Datum 1983/2011, a distance of 2,647.41 feet, being monumented by a #6 rebar with a 2.5" aluminum cap stamped LS 17497 at the North Quarter Corner and monumented by a 3.25" aluminum cap stamped LS 38480 at the Center Quarter Corner, and with all other bearings contained herein relative thereto.

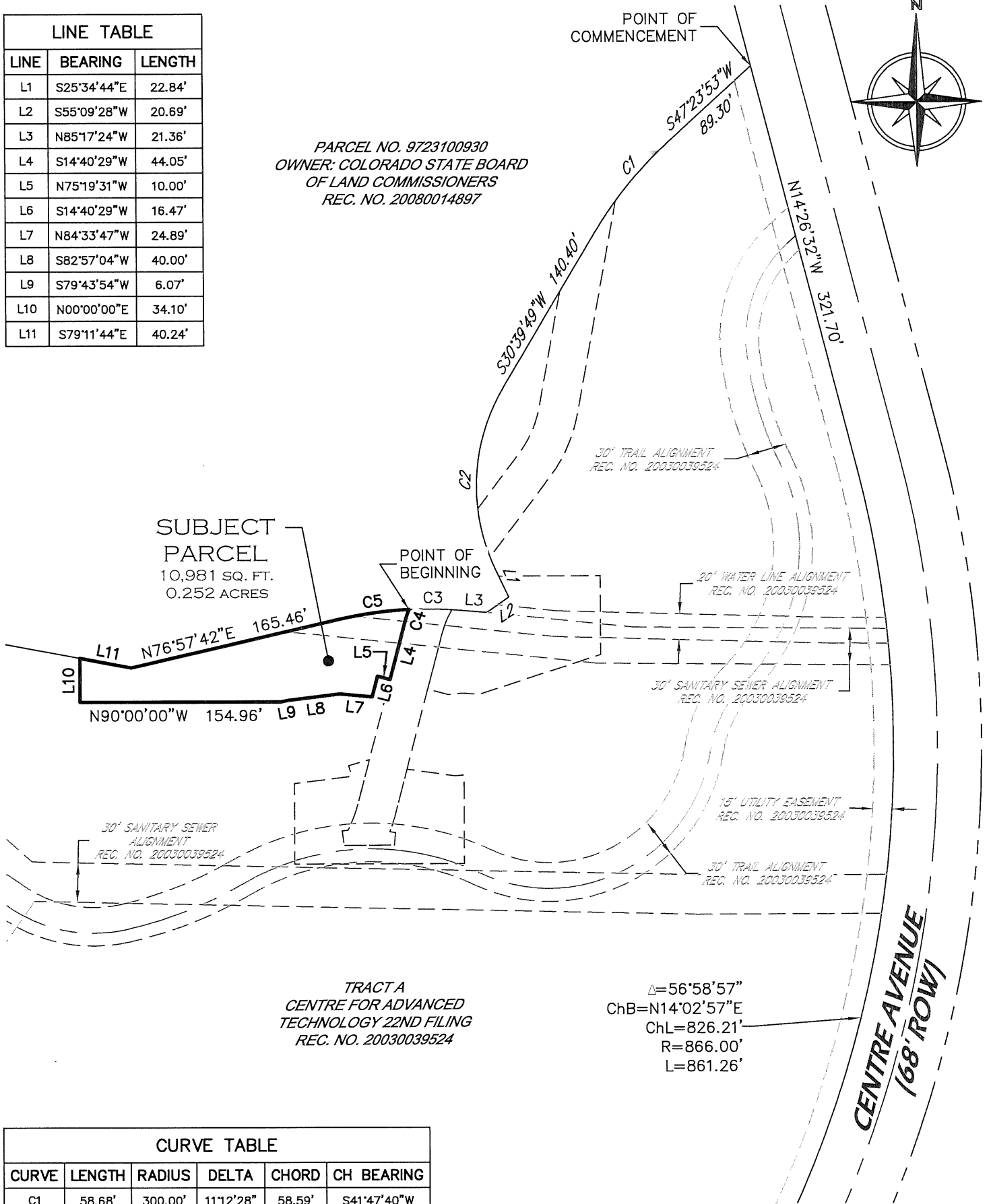
For and on behalf of Colorado State University, Fort Collins, Colorado.

Matthew A. Kramer - on behalf of Majestic Surveying, LLC
Colorado Licensed Professional Land Surveyor #38844
Majestic Surveying, LLC
1111 Diamond Valley Drive, Suite 104
Windsor, Colorado 80550



LINE TABLE		
LINE	BEARING	LENGTH
L1	S25°34'44"E	22.84'
L2	S55°09'28"W	20.69'
L3	N85°17'24"W	21.36'
L4	S14°40'29"W	44.05'
L5	N75°19'31"W	10.00'
L6	S14°40'29"W	16.47'
L7	N84°33'47"W	24.89'
L8	S82°57'04"W	40.00'
L9	S79°43'54"W	6.07'
L10	N00°00'00"E	34.10'
L11	S79°11'44"E	40.24'

PARCEL NO. 9723100930
OWNER: COLORADO STATE BOARD
OF LAND COMMISSIONERS
REC. NO. 20080014897



CURVE TABLE					
CURVE	LENGTH	RADIUS	DELTA	CHORD	CH BEARING
C1	58.68'	300.00'	11°12'28"	58.59'	S41°47'40"W
C2	147.24'	150.00'	56°14'33"	141.40'	S02°32'33"W
C3	5.77'	300.00'	1°06'10"	5.77'	N85°50'30"W
C4	20.61'	76.00'	15°32'11"	20.55'	S22°26'34"W
C5	11.75'	74.00'	9°05'39"	11.73'	S19°13'18"W
C6	13.22'	104.00'	7°16'52"	13.21'	N18°18'55"E

Note: This drawing does not represent a monumented land survey. Its sole purpose is a graphic representation of the accompanying written description.

Notice: According to Colorado law you must commence any legal action based upon any defect in this survey within three years after you first discover such defect. In no event may any action based upon any defect in this survey be commenced more than ten years from the date of the certification shown hereon. (CRS 13-80-105)

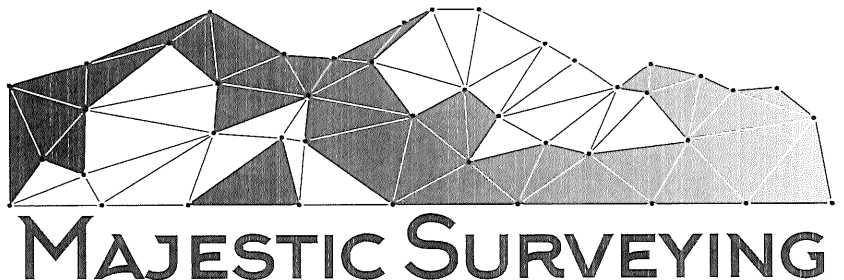


EXHIBIT A
PROJECT NUMBER: MTF M455-147
PROJECT CODE: 25298
DATE: January 2, 2024
DESCRIPTION

A parcel of land for the Department of Transportation, State of Colorado, Project No. MTF M455-147, containing 8,715 sq. ft (0.200 acres), more or less, being part of Tract A, Centre for Advanced Technology 22nd Filing, Community Horticulture Center, as recorded April 2, 2003 as Reception No. 20030039524 of the Records of the Larimer County Clerk and Recorder, situate in the Northeast Quarter (NE1/4) of Section Twenty-three (23), Township Seven North (T.7N.), Range Sixty-nine West (R.69W.) of the Sixth Principal Meridian (6th P.M.), City of Fort Collins, County of Larimer, State of Colorado and being more particularly described as follows:

BEGINNING at a point on the northwesterly line of said Tract A, whence the North Quarter Corner of said Section 23 bears North 23°05'33" West a distance of 1,486.76 feet;

1. THENCE North 90°00'00" East a distance of 78.43 feet;
2. THENCE South 00°00'00" East a distance of 61.00 feet;
3. THENCE South 72°00'05" West a distance of 98.92 feet;
4. THENCE North 85°07'23" West a distance of 12.59 feet;
5. THENCE South 83°52'16" West a distance of 10.98 feet;
6. THENCE North 75°19'31" West a distance of 16.71 feet;
7. THENCE North 14°40'29" East a distance of 44.05 feet to a Point of Curvature (PC);
8. THENCE along the arc of a curve concave to the east a distance of 20.61 feet, having a Radius of 76.00 feet, a Delta of 15°32'11" and is subtended by a Chord that bears North 22°26'34" East a distance of 20.55 feet to the northerly line of Tract A;
9. THENCE along the northwesterly line of Tract A the following four courses;
10. THENCE along the arc of a curve concave to the south a distance of 5.77 feet, having a Radius of 300.00 feet, a Delta of 01°06'10" and is subtended by a Chord that bears South 85°50'30" East a distance of 5.77 feet to a Point of Tangency (PT);
11. THENCE South 85°17'24" East a distance of 21.36 feet;
12. THENCE North 55°09'28" East a distance of 20.69 feet;
13. THENCE North 25°34'44" West a distance of 17.95 feet to the POINT OF BEGINNING.

Said described Temporary Construction Easement contains 8,715 Square Feet (0.200 acres), more or less (±).

The justification of the above-described Temporary Construction Easement is for construction of Public Access Sidewalk and all related activities.

Basis of Bearings: Assuming the west line of the NE1/4 of Section 23, Township 7 North, Range 69 West, as bearing North 00°01'13" West, being a Grid Bearing of the Colorado State Plane Coordinate System, North Zone, North American Datum 1983/2011, a distance of 2,647.41 feet, being monumented by a #6 rebar with a 2.5" aluminum cap stamped LS 17497 at the North Quarter Corner and monumented by a 3.25" aluminum cap stamped LS 38480 at the Center Quarter Corner, and with all other bearings contained herein relative thereto.

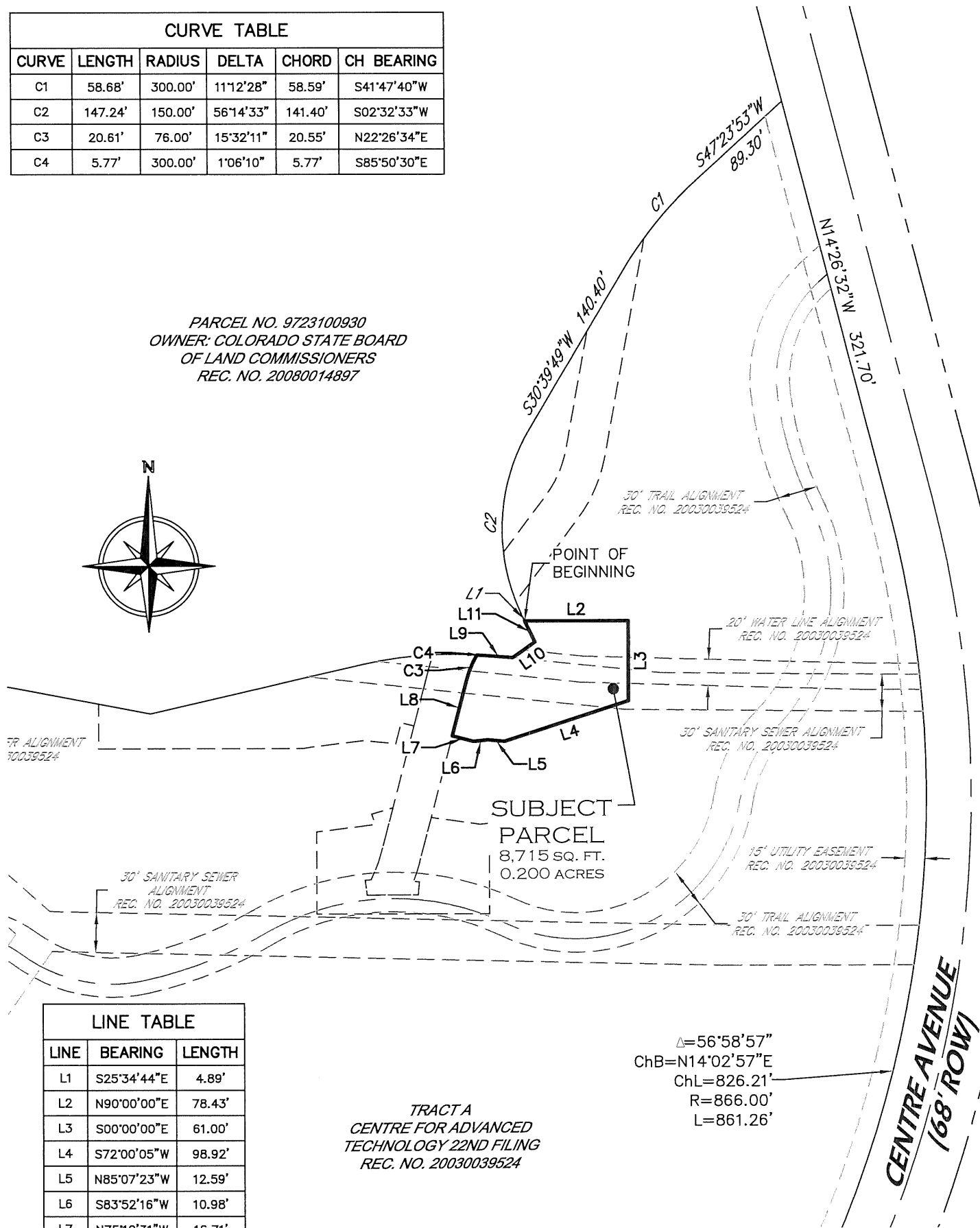
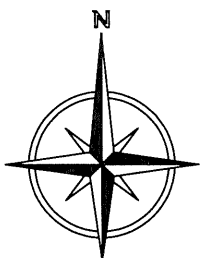
For and on behalf of Colorado State University, Fort Collins, Colorado.

Matthew A. Kramer - on behalf of Majestic Surveying, LLC
Colorado Licensed Professional Land Surveyor #38844
Majestic Surveying, LLC
1111 Diamond Valley Drive, Suite 104
Windsor, Colorado 80550



CURVE TABLE					
CURVE	LENGTH	RADIUS	DELTA	CHORD	CH BEARING
C1	58.68'	300.00'	11°12'28"	58.59'	S41°47'40"W
C2	147.24'	150.00'	56°14'33"	141.40'	S02°32'33"W
C3	20.61'	76.00'	15°32'11"	20.55'	N22°26'34"E
C4	5.77'	300.00'	1°06'10"	5.77'	S85°50'30"E

PARCEL NO. 9723100930
OWNER: COLORADO STATE BOARD
OF LAND COMMISSIONERS
REC. NO. 20080014897



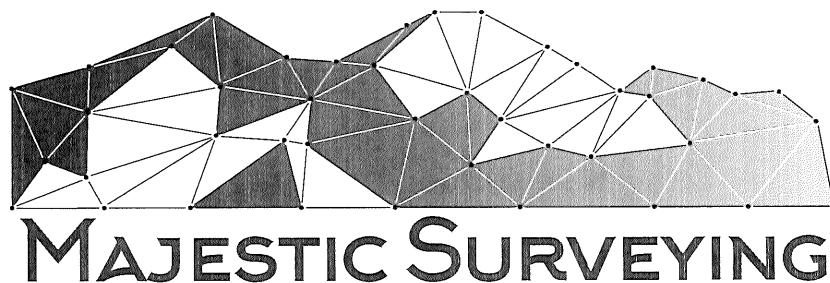
LINE TABLE		
LINE	BEARING	LENGTH
L1	S25°34'44"E	4.89'
L2	N90°00'00"E	78.43'
L3	S00°00'00"E	61.00'
L4	S72°00'05"W	98.92'
L5	N85°07'23"W	12.59'
L6	S83°52'16"W	10.98'
L7	N75°19'31"W	16.71'
L8	N14°40'29"E	44.05'
L9	S85°17'24"E	21.36'
L10	N55°09'28"E	20.69'
L11	N25°34'44"W	17.95'

TRACT A
CENTRE FOR ADVANCED
TECHNOLOGY 22ND FILING
REC. NO. 20030039524

$\Delta = 56^{\circ}58'57''$
ChB = N14°02'57"E
ChL = 826.21'
R = 866.00'
L = 861.26'

Note: This drawing does not represent a monumented land survey. Its sole purpose is a graphic representation of the accompanying written description.

Notice: According to Colorado law you must commence any legal action based upon any defect in this survey within three years after you first discover such defect. In no event may any action based upon any defect in this survey be commenced more than ten years from the date of the certification shown hereon. (CRS 13-80-105)



MAJESTIC SURVEYING

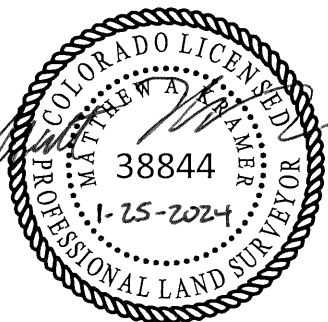


EXHIBIT A
PROJECT NUMBER: MTF M455-147
PROJECT CODE: 25298
DATE: January 2, 2024
DESCRIPTION

A parcel of land for the Department of Transportation, State of Colorado, Project No. MTF M455-147, containing 7,248 sq. ft (0.166 acres), more or less, being part of Tract A, Centre for Advanced Technology 22nd Filing, Community Horticulture Center, as recorded April 2, 2003 as Reception No. 20030039524 of the Records of the Larimer County Clerk and Recorder, situate in the Northeast Quarter (NE1/4) of Section Twenty-three (23), Township Seven North (T.7N.), Range Sixty-nine West (R.69W.) of the Sixth Principal Meridian (6th P.M.), City of Fort Collins, County of Larimer, State of Colorado and being more particularly described as follows:

COMMENCING at a point on the northwesterly line of said Tract A, whence the North Quarter Corner of said Section 23 bears North 21°25'37" West a distance of 1,496.93 feet;

1. THENCE along the arc of a curve concave to the east a distance of 20.61 feet, having a Radius of 76.00 feet, a Delta of 15°32'11" and is subtended by a Chord that bears South 22°26'34" West a distance of 20.55 feet;
2. THENCE South 14°40'29" West a distance of 108.02 feet to the POINT OF BEGINNING;
3. THENCE South 81°54'02" East a distance of 37.54 feet;
4. THENCE North 84°18'14" East a distance of 6.82 feet;
5. THENCE South 00°00'00" East a distance of 68.67 feet;
6. THENCE North 90°00'00 West a distance of 131.00 feet;
7. THENCE North 00°00'00" East a distance of 62.41 feet;
8. THENCE North 82°56'41" East a distance of 44.62 feet;
9. THENCE North 16°29'16" West a distance of 8.42 feet;
10. THENCE North 73°30'44" East a distance of 16.78 feet;
11. THENCE South 14°40'29" West a distance of 36.98 feet to a Point of Curvature (PC);
12. THENCE along the arc of a curve concave to the west a distance of 11.75 feet, having a Radius of 74.00 feet, a Delta of 09°05'39" and is subtended by a Chord that bears South 19°13'18" West a distance of 11.73 feet to a Point of Tangency (PT);
13. THENCE South 23°46'08" West a distance of 8.64 feet;
14. THENCE South 85°44'54" West a distance of 4.50 feet;
15. THENCE South 06°55'23" East a distance of 11.38 feet;
16. THENCE North 89°46'52" East a distance of 38.94 feet;
17. THENCE North 05°00'38" East a distance of 9.79 feet;
18. THENCE North 82°37'54" West a distance of 4.50 feet to the beginning point of a curve, non-tangent to the aforesaid line;
19. THENCE along the arc of a curve concave to the west a distance of 13.22 feet, having a Radius of 104.00 feet, a Delta of 07°16'52" and is subtended by a Chord that bears North 18°18'55" East a distance of 13.21 feet;
20. THENCE North 14°40'29" East a distance of 37.12 feet to the POINT OF BEGINNING.

Said described Temporary Construction Easement contains 7,248 Square Feet (0.166 acres), more or less (±).

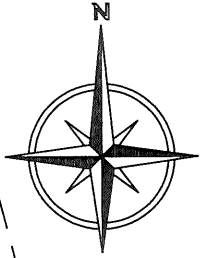
The justification of the above-described Temporary Construction Easement is for construction of Public Access Sidewalk and all related activities.

Basis of Bearings: Assuming the west line of the NE1/4 of Section 23, Township 7 North, Range 69 West, as bearing North 00°01'13" West, being a Grid Bearing of the Colorado State Plane Coordinate System, North Zone, North American Datum 1983/2011, a distance of 2,647.41 feet, being monumented by a #6 rebar with a 2.5" aluminum cap stamped LS 17497 at the North Quarter Corner and monumented by a 3.25" aluminum cap stamped LS 38480 at the Center Quarter Corner, and with all other bearings contained herein relative thereto.

For and on behalf of Colorado State University, Fort Collins, Colorado.

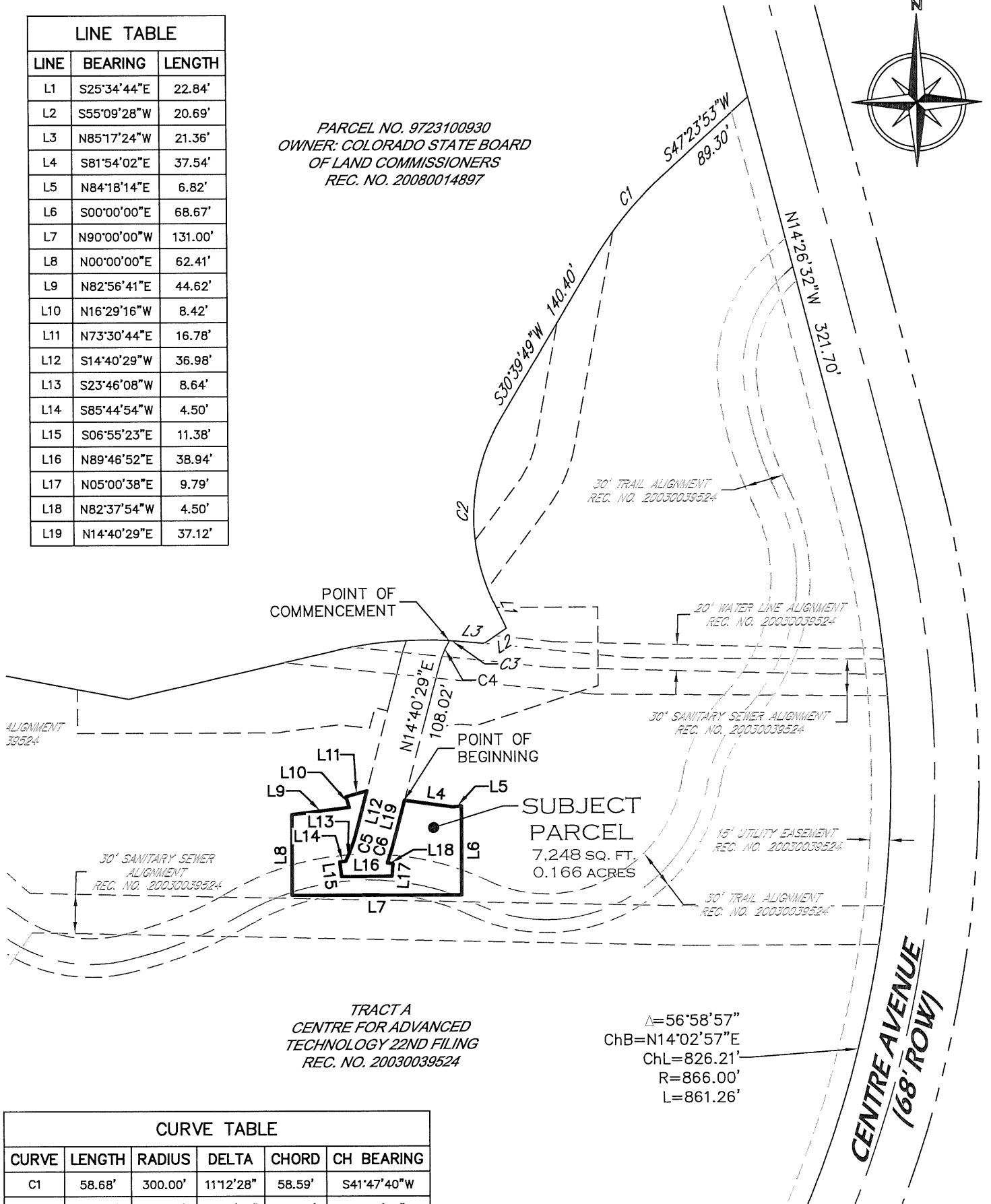
Matthew A. Kramer - on behalf of Majestic Surveying, LLC
Colorado Licensed Professional Land Surveyor #38844
Majestic Surveying, LLC
1111 Diamond Valley Drive, Suite 104
Windsor, Colorado 80550





LINE TABLE		
LINE	BEARING	LENGTH
L1	S25°34'44"E	22.84'
L2	S55°09'28"W	20.69'
L3	N85°17'24"W	21.36'
L4	S81°54'02"E	37.54'
L5	N84°18'14"E	6.82'
L6	S00°00'00"E	68.67'
L7	N90°00'00"W	131.00'
L8	N00°00'00"E	62.41'
L9	N82°56'41"E	44.62'
L10	N16°29'16"W	8.42'
L11	N73°30'44"E	16.78'
L12	S14°40'29"W	36.98'
L13	S23°46'08"W	8.64'
L14	S85°44'54"W	4.50'
L15	S06°55'23"E	11.38'
L16	N89°46'52"E	38.94'
L17	N05°00'38"E	9.79'
L18	N82°37'54"W	4.50'
L19	N14°40'29"E	37.12'

PARCEL NO. 9723100930
OWNER: COLORADO STATE BOARD
OF LAND COMMISSIONERS
REC. NO. 20080014897



TRACTA
CENTRE FOR ADVANCED
TECHNOLOGY 22ND FILING
REC. NO. 20030039524

$\Delta=56^{\circ}58'57''$
ChB=N14°02'57"E
ChL=826.21'
R=866.00'
L=861.26'

CURVE TABLE					
CURVE	LENGTH	RADIUS	DELTA	CHORD	CH BEARING
C1	58.68'	300.00'	11°12'28"	58.59'	S41°47'40"W
C2	147.24'	150.00'	56°14'33"	141.40'	S02°32'33"W
C3	5.77'	300.00'	1°06'10"	5.77'	N85°50'30"W
C4	20.61'	76.00'	15°32'11"	20.55'	S22°26'34"W
C5	11.75'	74.00'	9°05'39"	11.73'	S19°13'18"W
C6	13.22'	104.00'	7°16'52"	13.21'	N18°18'55"E

Note: This drawing does not represent a monumented land survey. Its sole purpose is a graphic representation of the accompanying written description.

Notice: According to Colorado law you must commence any legal action based upon any defect in this survey within three years after you first discover such defect. In no event may any action based upon any defect in this survey be commenced more than ten years from the date of the certification shown hereon. (CRS 13-80-105)

