



Vine & Lemay Project

Moving by Joshua Wiener



Aerial view and location of site.

The Lemay Avenue realignment and intersection improvements project constructed a new road and intersection slightly east of the previous Vine and Lemay intersection. This project included the new overpass over the Burlington Northern Santa Fe (BNSF) railway and Vine Drive.

The project team worked with Art in Public Places artist Joshua Wiener to create artwork to accentuate the new overpass and views. The design includes ten free-standing sculptures that are located throughout the site.

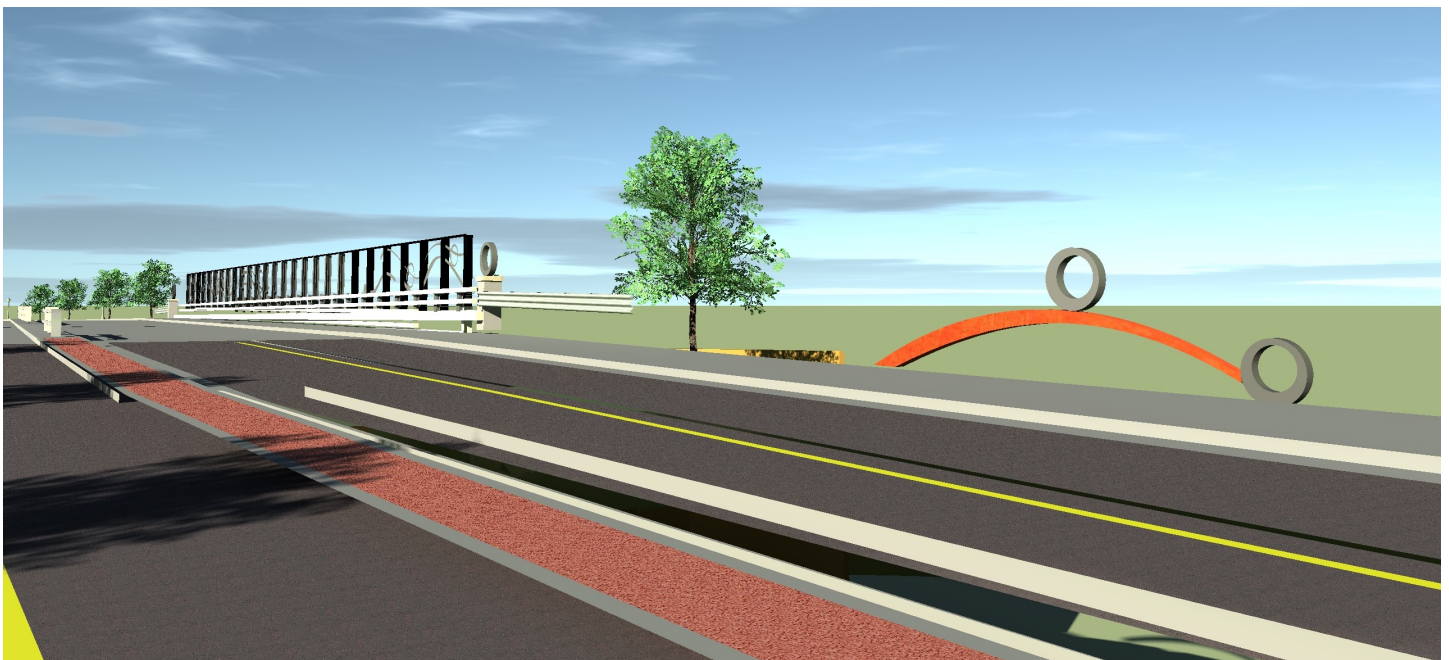


A rendering of one of four ring sculptures that are placed in the landscape. These sculptures are 5' and 8' tall.

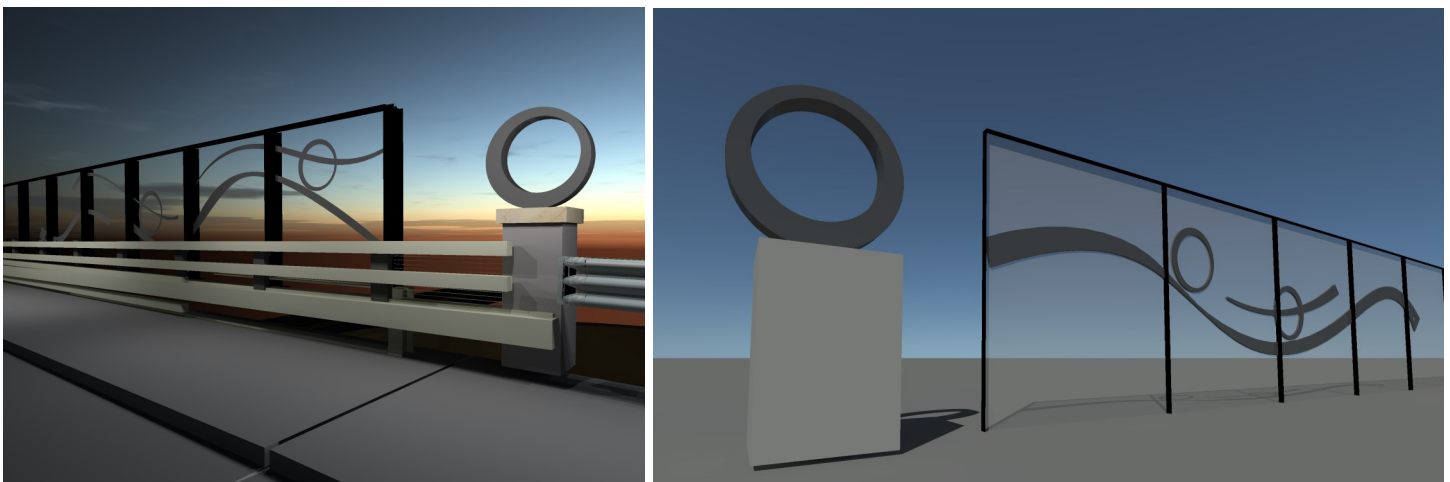
The design of swirls and rings extend from the bridge pedestrian fence panels and continue, in three-dimensional sculptures, into the landscape and on the approaches to the overpass. The artist will also create the four sculptural rings to be placed on each of the four columns at the ends of the bridge.

The artwork is meant to be playful and move the eye through the site and surrounding landscape. The swirls and rings of the artworks are intended to add a sense of motion. Some of the sculptural rings will be placed so they appear under the horizon, seeming to roll through the distant landscape. Other rings will be elevated above the horizon, creating a bold presence against the vast Colorado sky. The rings will also serve as apertures to focus the visitors attention on specific views.

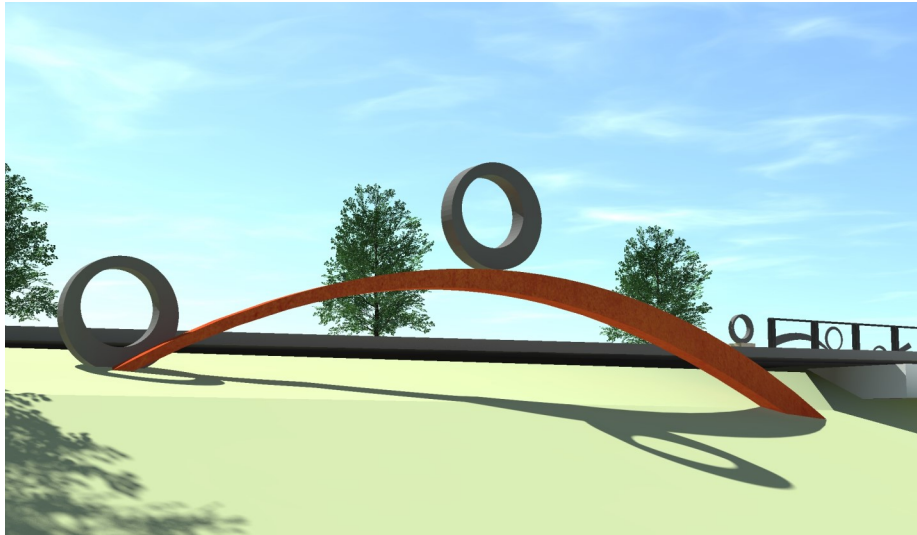
The sculptures are a combination of aluminum and steel. The swirls will be raw steel that will rust, so they will feel like a raised strip of earth. The rings will be sand-blasted then painted with a durable product with high UV protection, making them easy to maintain.



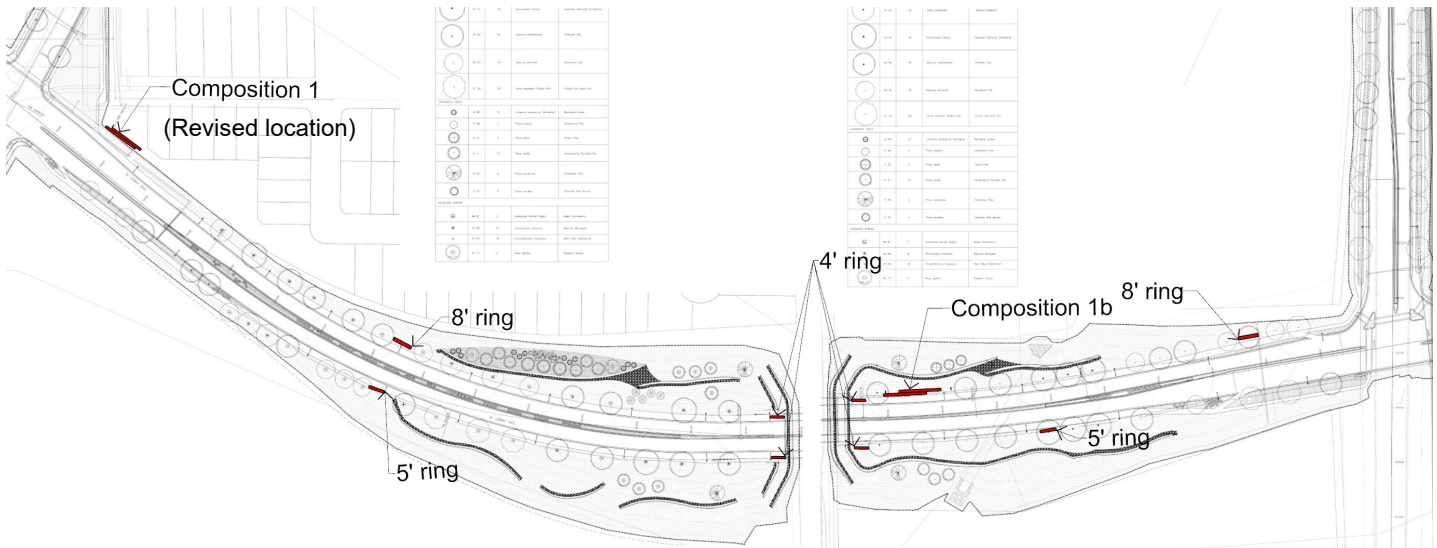
Rendering of a three-dimensional sculpture near bridge.



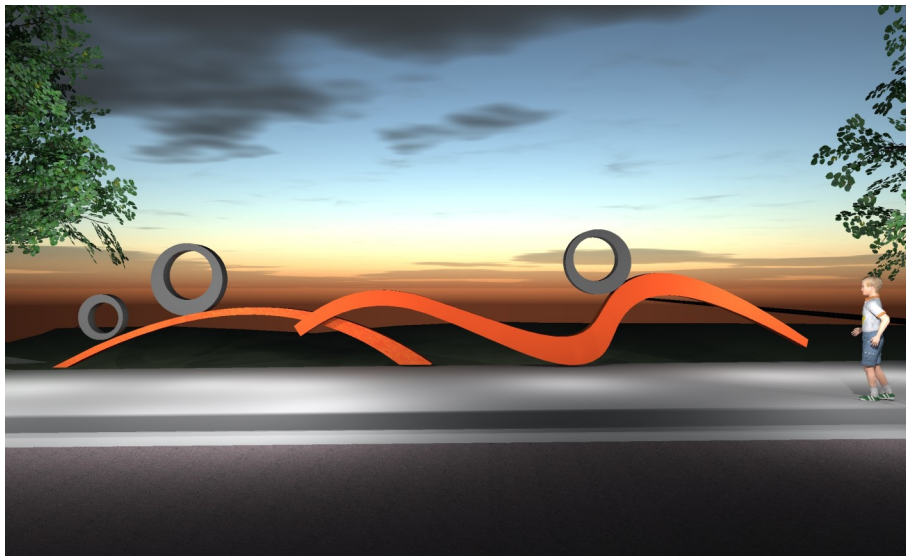
Renderings of sculptural ring sculptures on bridge end columns. There will be a total of 4 sculptures on the bridge columns, one on each columns at the ends of the bridge.



A rendering of one of the large freestanding sculptural elements placed in the landscape, near the bridge. It is labeled as "Composition 1b" on the map below.



Map showing placement of the 10 freestanding sculptures.



The second large freestanding sculpture has been relocated from the original plan to the start of the approach to the overpass, near the neighborhood. It is labeled as "Composition 1" on the map above.