

# Financial Support for Construction & Demolition Facility in Larimer County

---

**Tyler Marr**

Deputy City Manager

**Jacob Castillo**

Chief Sustainability Officer



# Introduction

Purpose of work session:

- Provide update on current state of solid waste infrastructure investments in the region
- Discuss partnership opportunity with Larimer County on a Construction & Demolition Processing Facility.
- Identify next steps



What feedback do Councilmembers have regarding the potential to invest up to \$1.5M of 2050 Climate Tax Revenue to support Larimer County in the development and construction of a Construction & Demolition Processing Facility?



## **City of Fort Collins Goal: Zero Waste Community by 2030**

Being a zero waste community means that nothing goes into landfill. All of our “waste” gets reused, recycled and composted.

Achieving the zero waste goal will require additional infrastructure, possible policy actions, and behavioral changes within the community.

Pathways to zero waste were identified in Solid Waste Infrastructure Master Plan, adopted by multiple jurisdictions, including Fort Collins, in 2018.

The SWIMP identified Tier 1 infrastructure needs, including a regional landfill, transfer station, C&D facility, composting facility, and a yard waste open windrow composting **■**

# Tier 1 Project Construction Timeline

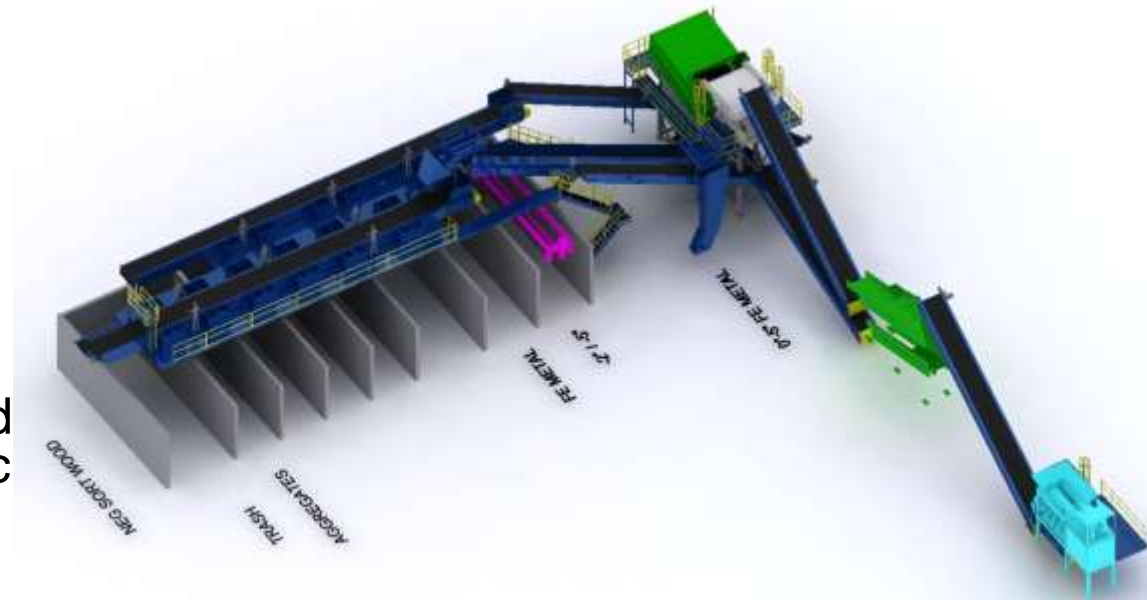
There are several Tier 1 projects in various stages of development

- **Larimer County Landfill**
  - Estimated capital investment: \$45M
  - Opening early 2026
- **Central Diversion & Transfer Station**
  - Estimated capital investment: \$23.7M
  - Estimated opening Online?
- **Construction & Demolition Processing Facility**
  - Estimated capital investment: \$8.7M-\$10.5M
  - Estimated opening TBD
- **Composting Facility:**
  - **Currently under evaluation and study through TASP Grant**



# Focus: C&D Facility as Proposed by Larimer County

- 15,000 SF building with 2 open sides and a roof.
- Share operations of the Transfer Station.
- Supports 50 tons per hour mechanical processing system designed to process large volumes of C&D debris and commercial waste material.
- Includes a 25,000 SF processing area designed to accept source separated materials, stockpile processed materials and loading of processed materials to specific markets to be recycled, reused or converted into useful products.
- Capacity to process 130,000 tons of C&D materials annually.
- **Goal: Achieve a 40% or greater diversion rate (exceeding the state target of 36%)**



C&D Facility: Conceptual illustration provided by Larimer County

**C&D Recycling and Reuse is critical step in resource conservation and aids in creating a more circular economy.**

**Other benefits include:**

- Reduced waste sent to landfills, prolonging landfill life and decreasing environmental impacts.
- Decreased need for virgin materials in new construction projects.
- Cost savings from recycling materials rather than disposing of them in landfill.
- Community education and engagement through new and innovative recycling and reuse programs.
- Economic opportunity through product development, e.g. mulch and other products from recycled materials, and growth in the recycling/manufacturing sectors.
- Facilitates compliance with local regulations.

# The Numbers in Broad Strokes



**The proposed C&D Facility is estimated to cost between \$8.7M - \$10.5M.**

**In February of 2025, the County will be pursuing a grant through the State in which they will be seeking \$5M in project costs.**

**Larimer County is asking regional partners to support the balance of the investment, specifically requesting the City of Fort Collins for \$2.6M - \$3.1M (1/3 of the estimated remaining cost).**

**The City currently does not have the requested amount in the budget, however there was approximately \$1.5M of the 2050 Climate Tax that was unallocated this budget cycle and was intentionally set aside for opportunities.**

**Given the amount of investment the County is making in the new landfill and transfer station, without additional resources it is unlikely that a C&D Facility will come to fruition.**



What questions do you have?

What feedback do Councilmembers have regarding the potential to invest up to \$1.5M of 2050 Climate Tax Revenue to support Larimer County in the development and construction of a Construction & Demolition Processing Facility?





**THANK YOU!**

For More Information, Visit

[fcgov.com](http://fcgov.com)

