



West Elizabeth 100% Design

City Council

Spencer Smith, Monica Martinez

01-21-2025

Is City Council:

- ✓ Supportive of an out of cycle supplemental appropriation of Capital Investment Grant (CIG) Project Development funds

and

- ✓ The required local match for completion of 100% design for the West Elizabeth Enhanced Travel Corridor & Right of Way Services?

Project Overview



Project Features

- 3 miles connecting CSU campuses and MAX
- Increased frequency along the corridor (AM peak: 7.5 minutes)
- Raised, protected bike lanes
- ADA compliant sidewalks
- Floating bus stops (bike lanes separated from vehicular traffic)
- Protected intersection
- Protected roundabout
- Electric buses

60% Design Completed (June 2024)

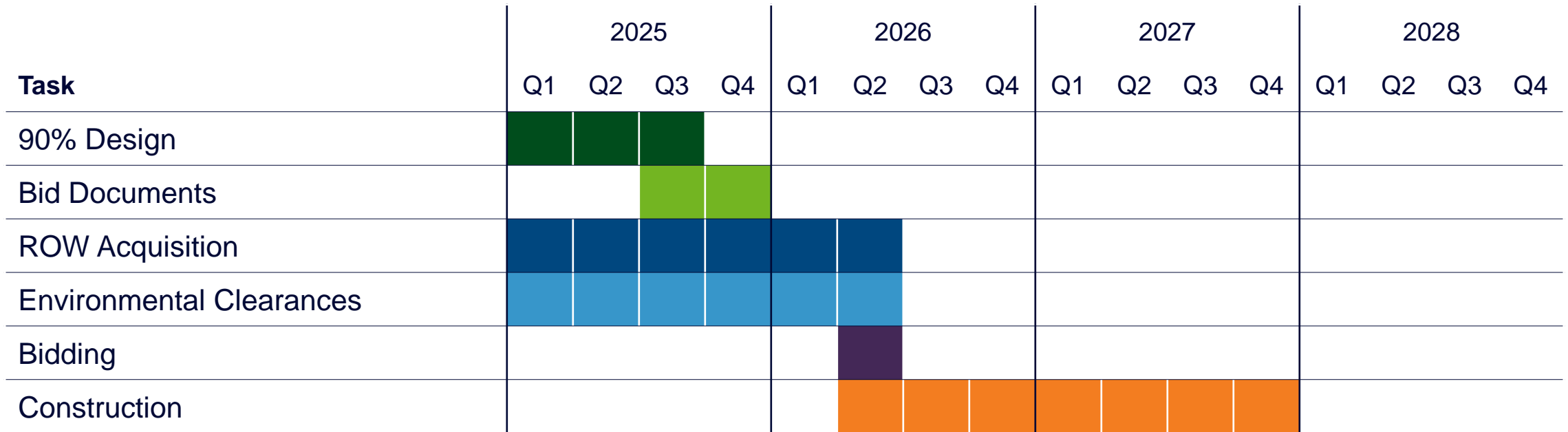
Design Split Into Two Components:

- Foothills Transit Station and Overland/Elizabeth Roundabout (RAISE Scope)
 - Construction Funded w/ RAISE Grant
 - 100% Design – Summer 2025
- Remaining Corridor (CIG Corridor)
 - Seeking Small Starts Grant for Construction Funding
 - Separated from RAISE Scope to Improve Project Rating
 - 100% Design – Spring 2026



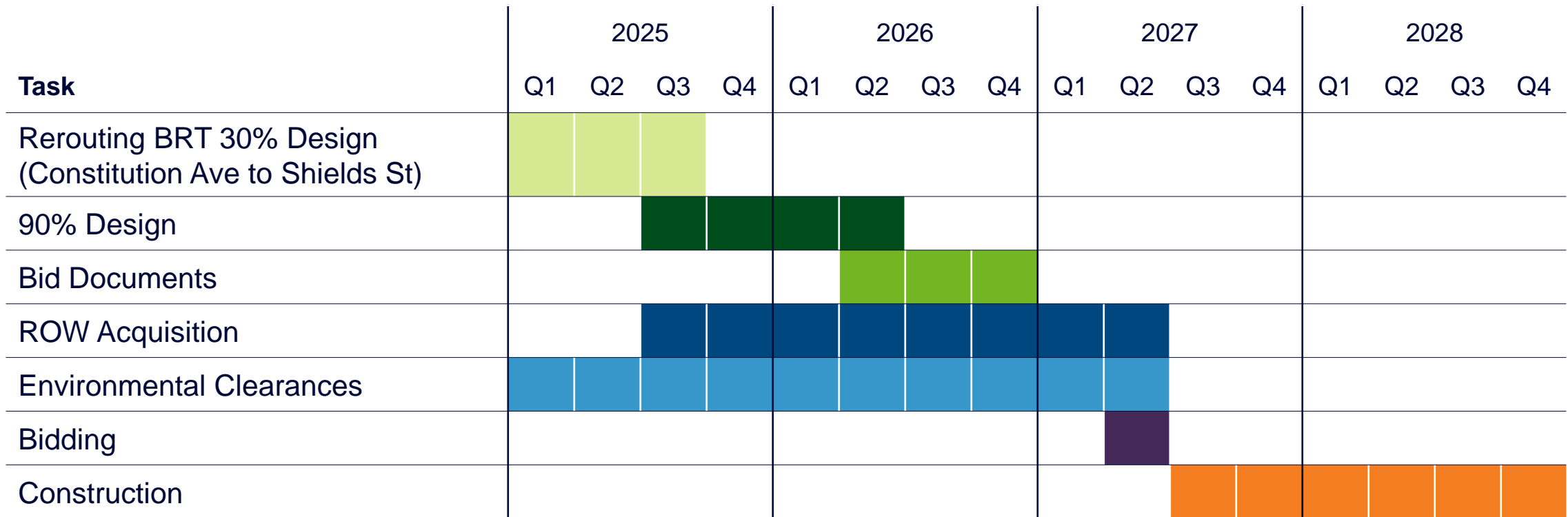
Remaining Design Schedule

RAISE Grant Portion (Foothills Transit Station and Overland Trail Protected Roundabout)



Remaining Design Schedule (cont.)

Remaining Corridor Portion (Overland Trail to Mason Street)



Previously Appropriated Funds

- \$2.5M Original Final Design Budget
 - Estimated during 30% Design

Supplemental Appropriation Request – using a portion of \$8M CIG Funds

- Federal Transit Administration has made a portion (\$8M) of future potential Small Starts grant funding available for planning and development for the project
- \$3.504M Additional Ask for Final Design Fee
 - Includes the final design items for the RAISE project
- \$2.02M Ask for Right of Way Services
- **\$5.524M Total Supplemental Appropriation Request**

New Scope Additions - \$1.75M

Not included in initial final design scope/fee

- Foothills Transit Station (\$211k) – part of RAISE scope (Local Funding Only)
 - EV Charging Design
 - Restroom Facility
 - Cathodic Protection Relocation Design
- Transit Maintenance Facility (TMF) Expansion (\$525k)
 - Expansion of existing TMF on Portner Rd. to accommodate electric BRT buses
- Street Lighting (Plum St., Myrtle St. and CSU Transit Center) (\$15k)
- Transit Technology CDOT Approval Process (\$73k)
 - Systems Engineering Analysis and Transit Signal Priority Communication Specification
- Rerouting to Constitution/Plum/City Park (\$926k)
 - Requires additional design, data collection and environmental clearance efforts

Advance Corridor Design to 100% - \$1.754M

- Includes some tasks removed or reduced from initial final design scope
- Consultant rates were increased between 30% and final design phase (approx. 20%)
- Additional Survey (\$15k)
- Conditional Letter of Map Revision (CLOMR) (\$53k)
- Laurel and Meldrum Intersection (\$141k)
- Final Design/Bid Documents (\$1.5M)
- Project management/meetings/coordination (\$45k)

Right-of-Way - \$2.02M

- Professional Services (appraisals, consulting, City RES oversight, etc.)
- RAISE Scope (Local Funding Only) - \$230k

Funding	Amount
Capital Investment Grant	\$4,066,400
2050 Transit Tax – CIG Local Match	\$1,016,600
2050 Transit Tax – RAISE Project	\$441,000
Supplemental Appropriation	\$5,524,000

Is City Council:

- ✓ Supportive of an out of cycle supplemental appropriation of Capital Investment Grant (CIG) Project Development funds

and

- ✓ The required local match for completion of 100% design for the West Elizabeth Enhanced Travel Corridor & Right of Way Services?