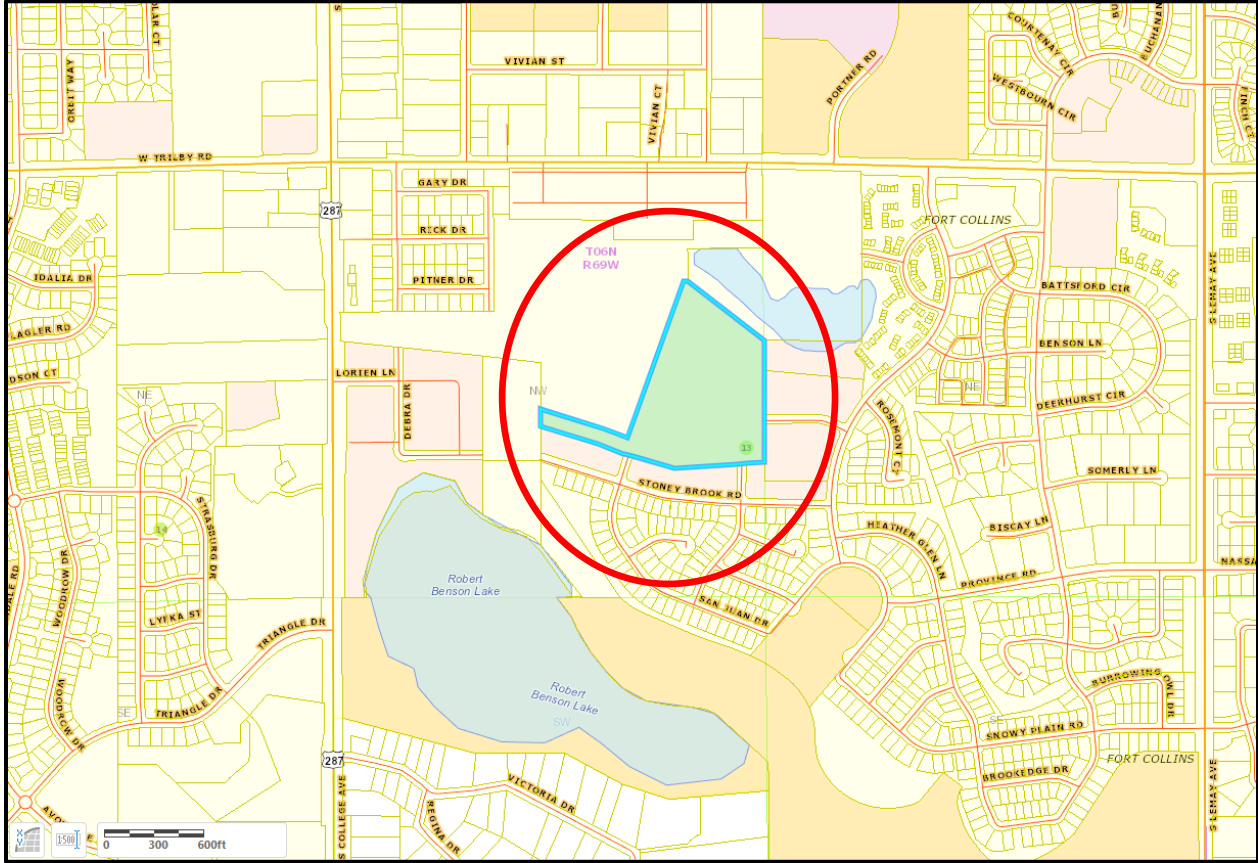


EXHIBIT A TO ORDINANCE NO. 029, 2024

City Property



Legal Description per County Assessor:

PT NW 1/4 13-6-69, FTC, DESC: BEG AT PT S 89 50' E 50 FT, N O 5' E 1564.48 FT, S 83 52' E 1228.44 FT, SO 5' W 303.85 FT FROM W 1/4 COR, SO 5' W 104.55 FT, S 72 57' E 367.2 FT, S 69 14' E 161.12 FT

Location Address:

N/A

Assessor Parcel Number:

9613200927