



2050 Tax Implementation: Parks & Recreation Update

Dean Klingner

Community Services Director

LeAnn Williams

Community Services Deputy Director

Jill Wuertz

Park Planning & Development
Sr. Manager

**What feedback do
Councilmembers have on the
2050 Parks and Recreation Tax
implementation strategy?**



2050 TAX OVERVIEW:

- ½-cent sales tax
- Passed in November 2023
- Expires in 2050
- Spending shall supplement and not replace
- Allocations: 25% Transit, 25% Climate, and 50% for Parks & Recreation

2050 Parks and Recreation Tax Language

Replacement, upgrade, maintenance, and accessibility of parks facilities and for the replacement and construction of indoor and outdoor recreation and pool facilities

How should 2050 P&R tax be split between eligible elements?

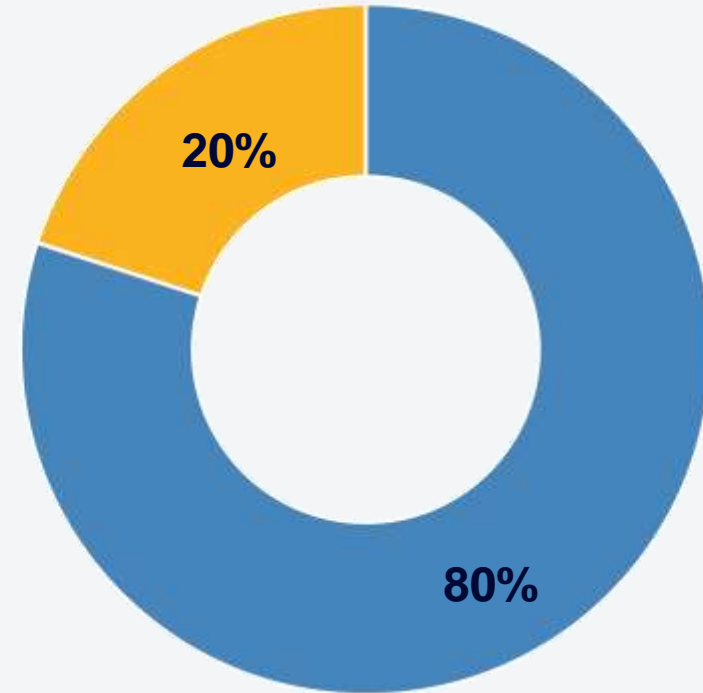
LIFE OF TAX = 27 YEARS

\$10.5M (2024 dollars) x 27 years @ 2.5%
projected sales tax growth
= **~\$402.5 million**

~80% = ~\$322M replacement/update

~20% = ~\$80.5M replacement and
construction of indoor and outdoor recreation
and pool facilities

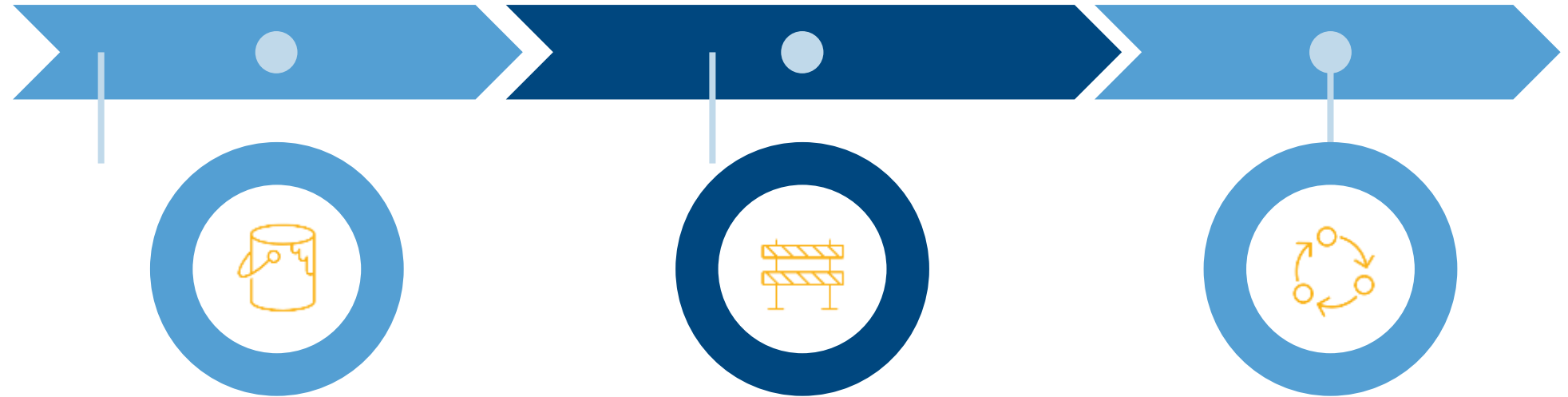
2050 Parks and Recreation Funds Split



80% - Allocated for the replacement, upgrade, and maintenance of parks and recreation amenities

20% - Allocated for the replacement and construction of indoor and outdoor recreation and pool facilities

How To Allocate The 80%



**PARKS PREVENTATIVE
MAINTENANCE**

**PARKS AND RECREATION
REPAIR/
REPLACEMENT**

PARK UPDATES

**Annual:
~\$8.4M**

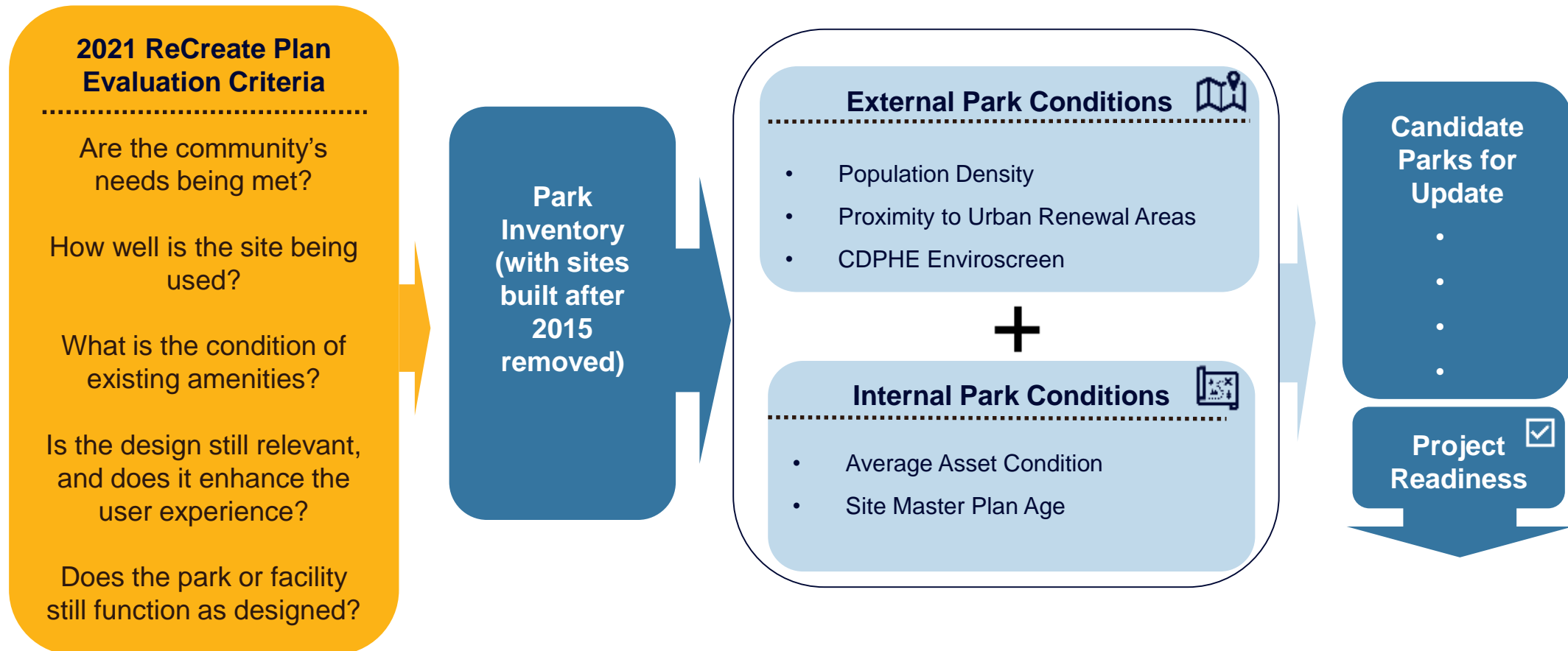
\$750K-\$1.5M

\$1-\$5M

\$4-\$5M

Work on Prioritization Criteria for Park Updates

- ✓ Utilize Existing Data from Parks IRP Plan
- ✓ Find Additional Data
 - ✓ Changing neighborhood conditions



TOP RESULTS OF PARK UPDATE PRIORITIZATION

Candidate Parks for Update

Lowest scores listed in alphabetical order

- Alta Vista Park
- Beattie Park
- City Park
- Creekside Park
- Freedom Square Park
- Indian Hills Park
- Landings Park
- Lee Martinez Park
- Legacy Park
- Leisure Park
- Old Fort Collins Heritage Park
- Romero Park
- Rolland Moore Park
- Rossborough Park
- Soft Gold Park
- Spencer Park
- Spring Park
- Warren Park
- Washington Park
- Woodwest Park

Medium Priority Candidate Parks for Update

Listed in alphabetical order

- | | |
|------------------------|----------------------|
| • Archery Range | • Homestead Park |
| • Avery Park | • Library Park |
| • Blevins Park | • Miramont Park |
| • Buckingham Park | • Oak Street Plaza |
| • Civic Center Park | • Overland Park |
| • Cottonwood Glen Park | • Rabbit Brush Park |
| • Eastside Park | • Registry Park |
| • Edora Park | • Ridgeview Park |
| • English Ranch Park | • Rogers Park |
| • Fossil Creek Park | • Spring Canyon Park |
| • Golden Meadows Park | • Stewart Case Park |
| • Greenbriar Park | • Troutman Park |
| • Harmony Park | • Water's Way Park |
| | • Westfield Park |

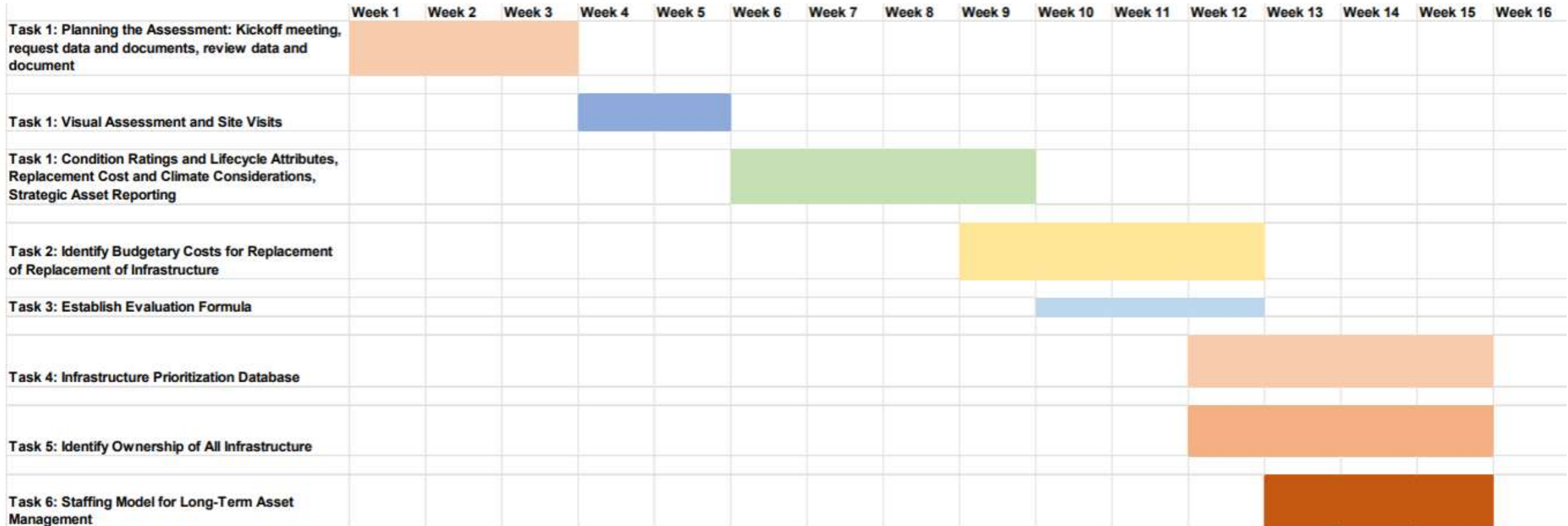
New parks built in the last ten years

Listed chronologically

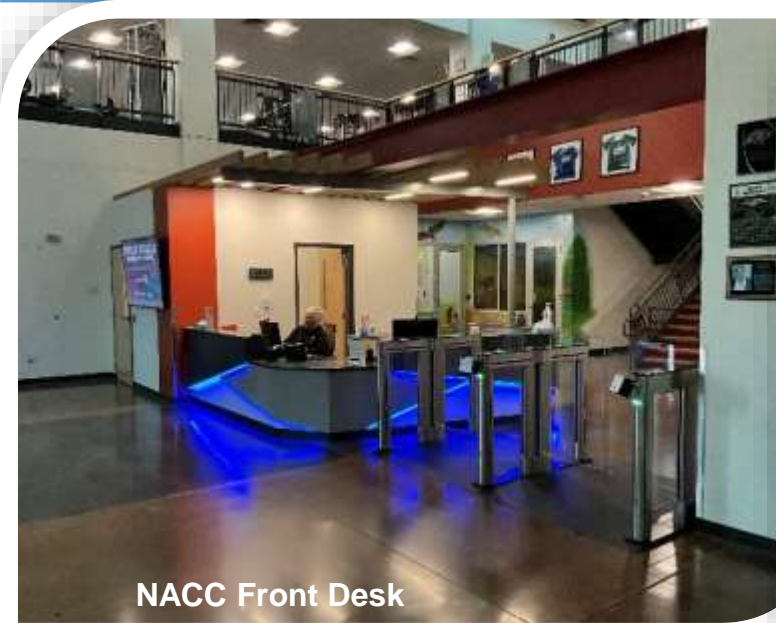
- Radiant Park
- Twin Silo Park
- Crescent Park
- Poudre Whitewater Park
- Sugarbeet Park
- Traverse Park
- Dovetail Park
- Tailwinds Park

Recreation Asset Management Program

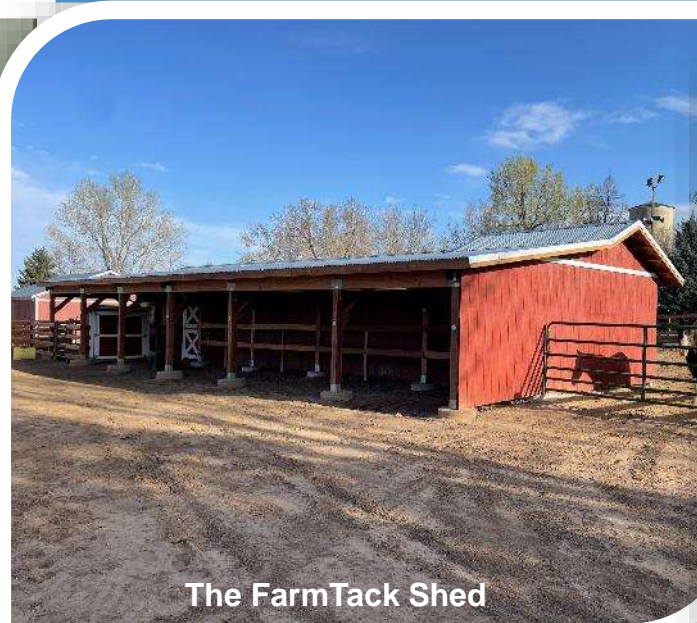
- ✓ Initial inventory complete
- ✓ Anticipate completion in Q1 2026



Projects Completed



NACC Front Desk



The FarmTack Shed



Lee Martinez Court Resurfacing



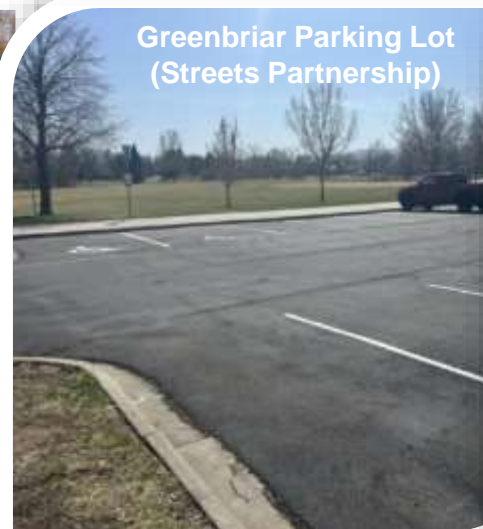
Rabbitbrush Playground PIP



NACC Gym



Buckingham ADA improvement

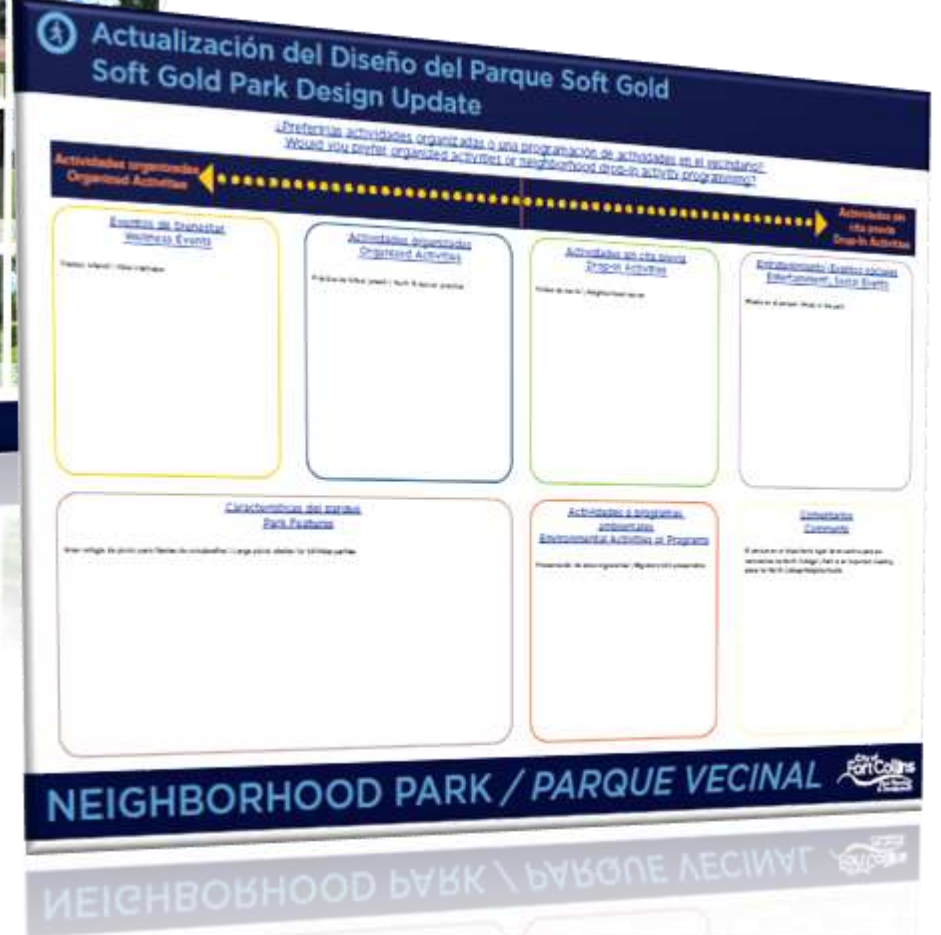


Greenbriar Parking Lot
(Streets Partnership)

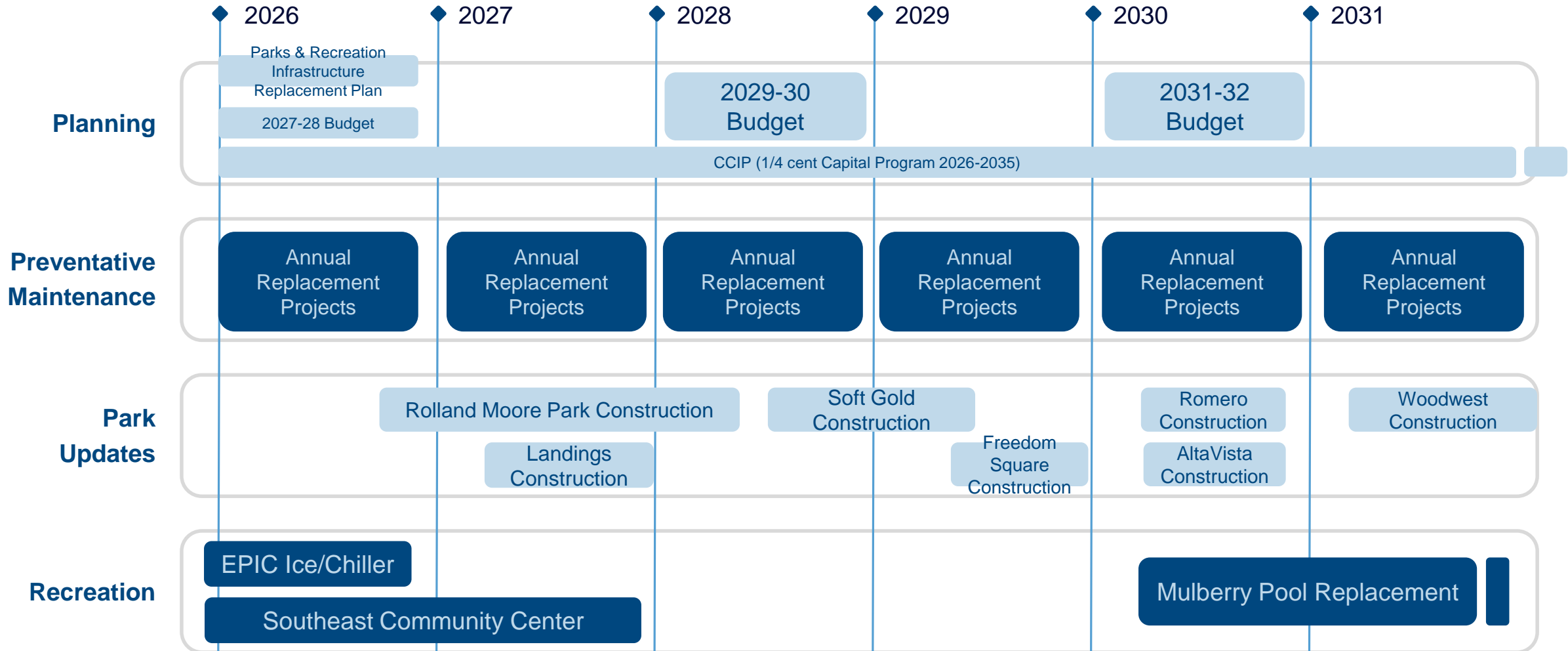


City Park Walkway

And Planning Underway...



5-year Look Ahead / Revisited Every 2 Years



What feedback do Councilmembers have on the 2050 Parks and Recreation Tax implementation strategy?



**2050 Tax Project Sign
(Spanish on reverse)**



Parks and Recreation By The Numbers

10 Recreation
Facilities



55 Parks



4 Pools
1 outdoor &
3 indoor



37 Average
age of Fort
Collins'
parks



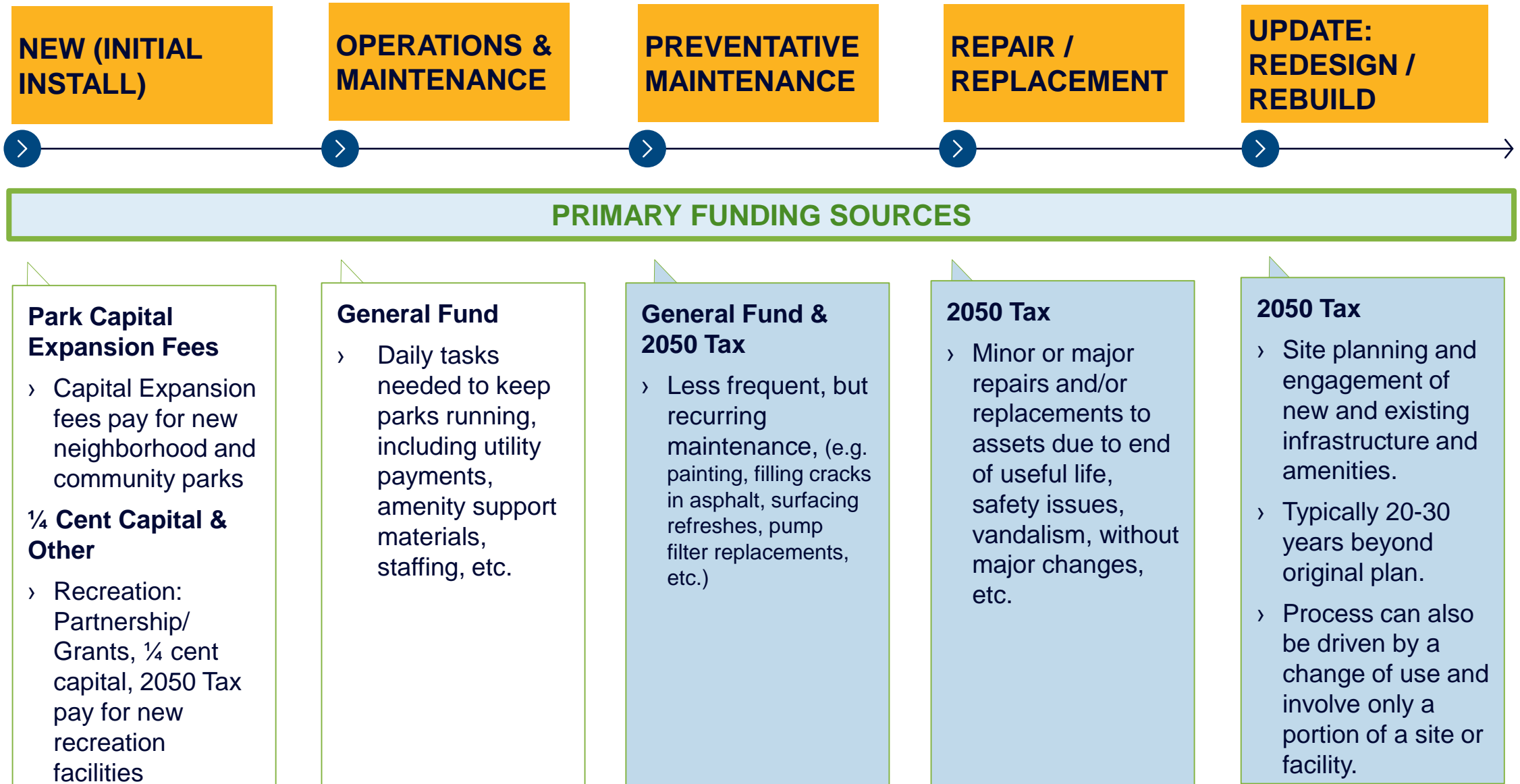
1 Million+
Number of annual
Recreation program
participants



1,627
Annual hours spent on
playground
maintenance, repairs &
inspections



Life Cycle of a Park or Recreation Facility



Preventative Maintenance



Asphalt Repairs



Painting



Surface Infill



**Court
Resurfacing**

Lee Martinez Community Park: Before Replacement



Lee Martinez Community Park: After Replacement



Update Needed: Landings Park (Est. 1984)



ADA upgrades needed
for hardscapes

Little architectural
interest; outdated

Missing xeric
landscaping

End of useful life playground
with missing play value

Sugar Beet Park (Est. 2019)

