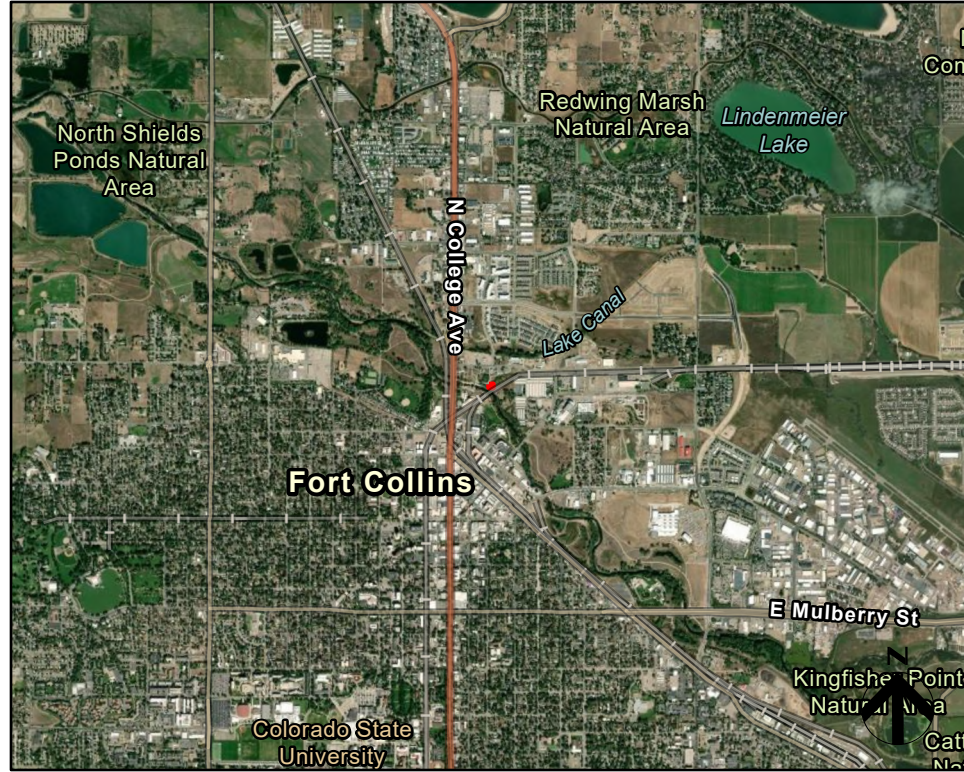
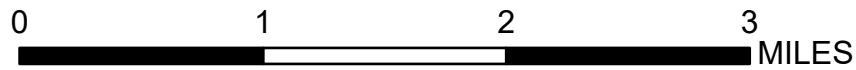
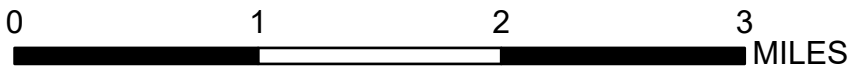


VICINITY MAP



LOCATION MAP



INDEX OF DRAWINGS

SHEET #	SHEET TITLE
1	COVER PAGE
2	NOTES: GENERAL / TREE PROTECTION
3	NOTES: REVEGETATION / WEED CONTROL
4	MAP: ACTIVE CONSTRUCTION PHASE
5	MAP: RECLAMATION PHASE
6	MAP: SHRUB /TREE INVENTORY

XCEL ENERGY TVC: H-111 REGULATOR STATION REBUILD FORT COLLINS, CO 80521

RECLAMATION PLAN DECEMBER 2024

PROJECT OWNER:
Xcel Energy
Project Manager : Jay Bauer
1123 West 3rd Avenue
Denver, CO 80223
P: 303.638.9558
E: jeffrey.j.bauer@xcelenergy.com

EROSION CONTROL MATERIALS PREPARER:
HDR Engineering, Inc.
Project Manager : Kaitlin Rainsberger
PE Supervision : Brian Brown, P.E., CPESC
419 Canyon Ave., Suite 316
Fort Collins, CO 80521
P: 970.416.4427
E: kaitlin.rainsberger@hdrinc.com

**DRAFT PLAN FOR
CITY OF FORT COLLINS
REVIEW**

CALL UTILITY NOTIFICATION CENTER OF COLORADO (UNCC) AT 811 BEFORE DIGGING. ALLOW MINIMUM 48-HOURS FOR UTILITY LOCATION SERVICES.

REV	DATE	PROJ. No.	REVISION DESCRIPTION	DWN	DSN	ENG	CHK	FILM



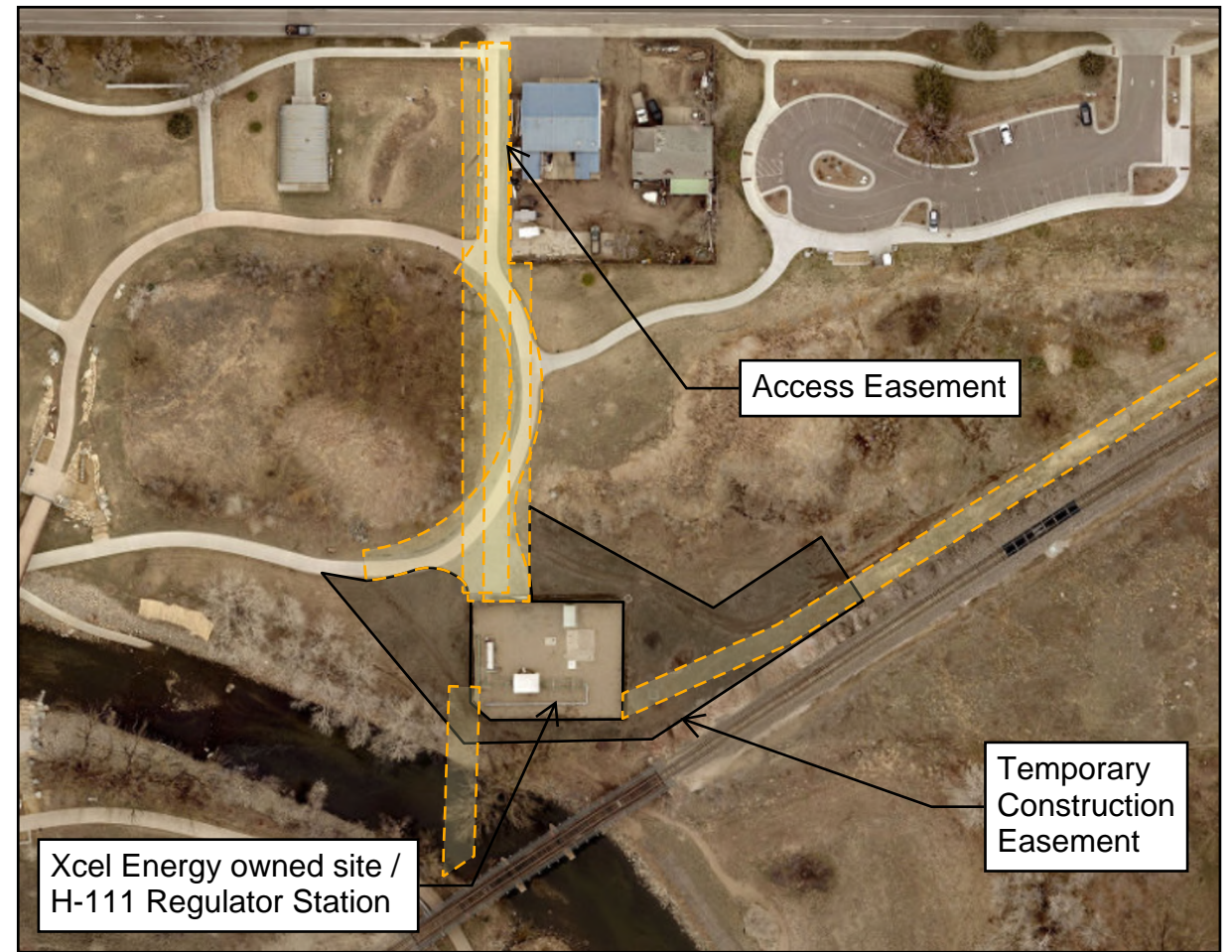
**XCEL ENERGY TVC
H-111 REGULATOR STATION REBUILD
RECLAMATION PLAN**

COVER PAGE

FILE NAME H-111	SCALE AS SHOWN
Sheet No. 1 OF 6	MICROFILM No.
SIZE B	DWG No.
REV 0	

GENERAL NOTES

1. CONTRACTORS WILL USE EXISTING UTILITY ACCESS EASEMENT AND PROPOSED TEMPORARY CONSTRUCTION EASEMENT. ALL OTHER AREAS OF THE PARK ARE TO REMAIN UNDISTURBED.
2. VEGETATED AREAS THAT ARE DISTURBED BY CONSTRUCTION RELATED ACTIVITIES ARE TO BE RECLAIMED PER SPECIFICATIONS INCLUDED IN THIS PLAN, UNLESS OTHERWISE APPROVED BY THE CITY.
3. FORT COLLINS PARKS DEPARTMENT HAS ACTIVE IRRIGATION AT THE WEST SIDE OF THE TEMPORARY CONSTRUCTION EASEMENT. IRRIGATION LINES, INFRASTRUCTURE, OR RELATED EQUIPMENT THAT IS DISTURBED, DAMAGED, DESTROYED, OR MOVED BY CONSTRUCTION RELATED ACTIVITIES, WILL BE PROMPTLY REPLACED AND/OR REPAIRED AT NO COST TO THE CITY. SEE NOTES ON SHEET 2 OF THIS RECLAMATION PLAN FOR INFORMATION REGARDING DAMAGE TO EXISTING TREES AND/OR SHRUBS.
4. TEMPORARY IRRIGATION WILL BE INSTALLED AND MAINTAINED AT THE EAST SIDE OF THE TEMPORARY CONSTRUCTION EASEMENT DURING ESTABLISHMENT PERIOD.
5. CONSTRUCTION FENCING WILL BE INSTALLED AT THE LIMITS OF DISTURBANCE DURING CONSTRUCTION. FOR THE PROTECTION OF NATURAL HABITATS AND FEATURES, INCLUDING BUT NOT LIMITED TO TREES AND CLUMPS OF TREES TO BE PRESERVED WITH A BUFFER ZONE THAT IS TO BE DISTURBED, TREE PROTECTION SPECIFICATIONS AS OUTLINED IN THIS PLAN WILL BE FOLLOWED.
6. THE PROJECT WILL CONFORM TO ALL APPLICABLE LOCAL, STATE AND FEDERAL AIR QUALITY REGULATIONS AND STANDARDS, INCLUDING, BUT NOT LIMITED TO, THOSE REGULATING ODOR, DUST, FUMES OR GASES WHICH ARE NOXIOUS, TOXIC OR CORROSIVE, AND SUSPENDED SOLID OR LIQUID PARTICLES. THE PROJECT WILL BE DESIGNED AND CONSTRUCTED TO COMPLY WITH THE DUST CONTROL MEASURES CONTAINED IN THE DUST CONTROL MANUAL TO THE EXTENT REQUIRED THEREIN.
7. CONTRACTOR IS REQUIRED TO FOLLOW EROSION CONTROL STANDARDS. DUE TO PROXIMITY OF PROJECT RELATED DISTURBANCES TO THE CACHE LA POUDDRE RIVER, EROSION CONTROL MATERIALS MUST BE APPROVED BY THE CITY OF FORT COLLINS AND IMPLEMENTED THROUGHOUT CONSTRUCTION.
8. CITY WILL BE COMPENSATED FOR LOSS OF TREES AND SHRUBS, AT A VALUE ASSESSED BY THE PARKS DEPARTMENT AND/OR CITY ARBORIST. TREE OR SHRUB REPLACEMENT WILL NOT OCCUR FOR TREES IDENTIFIED FOR REMOVAL OR ANY SHRUBS DAMAGED OR LOST DURING CONSTRUCTION. WARRANTY WILL NOT BE PROVIDED FOR SUCH PLANT MATERIALS.
9. PRIOR TO MOBILIZATION, EXISTING TREES AND SHRUBS WITHIN THE PROJECT LIMITS WILL BE INVENTORIED: NUMBERED AND IDENTIFIED BY SPECIES, SIZE, CONDITION, AND INTENT TO SAVE OR REMOVE. INVENTORY WILL BE CONDUCTED BY XCEL ENERGY CONTRACTOR WITH CONCURRENCE FROM CITY PARKS DEPARTMENT STAFF. SEE TREE PROTECTION NOTES FOR DETAILS.



OVERVIEW FIGURE

TREE PROTECTION SPECIFICATIONS

10. WITHIN THE DRIP LINE OF ANY PROTECTED EXISTING TREE, THERE SHALL BE NO CUT OR FILL OVER A FOUR-INCH DEPTH UNLESS A QUALIFIED ARBORIST OR FORESTER HAS EVALUATED AND APPROVED THE DISTURBANCE.
11. IF PRUNING IS REQUIRED FOR PROTECTED EXISTING TREES, IT MUST BE DONE SO SHALL BE PER THE CITY OF FORT COLLINS FORESTRY DIVISION STANDARDS.
12. PRIOR TO AND DURING CONSTRUCTION, BARRIERS SHALL BE ERECTED AROUND ALL PROTECTED EXISTING TREES WITH SUCH BARRIERS TO BE OF ORANGE CONSTRUCTION OR CHAIN LINK FENCING A MINIMUM OF FOUR (4) FEET IN HEIGHT, SECURED WITH METAL T-POSTS, NO CLOSER THAN SIX (6) FEET FROM THE TRUNK OR ONE-HALF (½) FOOT OF THE DRIP LINE, WHICHEVER IS GREATER. CONCRETE BLANKETS, OR EQUIVALENT PADDING MATERIAL, WRAPPED AROUND THE TREE TRUNK(S) IS RECOMMENDED AND ADEQUATE FOR ADDED PROTECTION DURING CONSTRUCTION. THERE SHALL BE NO STORAGE OR MOVEMENT OF EQUIPMENT, MATERIAL, DEBRIS OR FILL WITHIN THE FENCED TREE PROTECTION ZONE.
13. DURING THE CONSTRUCTION STAGE OF DEVELOPMENT, THE APPLICANT SHALL PREVENT THE CLEANING OF EQUIPMENT OR MATERIAL OR THE STORAGE AND DISPOSAL OF WASTE MATERIAL SUCH AS PAINTS, OILS, SOLVENTS, ASPHALT, CONCRETE, MOTOR OIL OR ANY OTHER MATERIAL HARMFUL TO THE LIFE OF A TREE WITHIN THE DRIP LINE OF ANY PROTECTED TREE OR GROUP OF TREES.
14. NO DAMAGING ATTACHMENT, WIRES, SIGNS OR PERMITS MAY BE FASTENED TO ANY PROTECTED TREE.
15. LARGE PROPERTY AREAS CONTAINING PROTECTED TREES AND SEPARATED FROM CONSTRUCTION OR LAND CLEARING AREAS, ROAD RIGHTS-OF-WAY AND UTILITY EASEMENTS MAY BE "RIBBONED OFF," RATHER THAN ERECTING PROTECTIVE FENCING AROUND EACH TREE AS STATED ABOVE. THIS MAY BE ACCOMPLISHED BY PLACING METAL TEE-POST STAKES A MAXIMUM OF FIFTY (50) FEET APART AND TYING RIBBON OR ROPE FROM STAKE-TO-STAKE ALONG THE OUTSIDE PERIMETERS OF SUCH AREAS BEING CLEARED.

Exhibit E-Reclamation Plan (Page 2 of 6)

REV	DATE	PROJ. No.	REVISION DESCRIPTION	DWN	DSN	ENG	CHK	FILM



**XCEL ENERGY TVC
H-111 REGULATOR STATION REBUILD
RECLAMATION PLAN**

NOTES: GENERAL / TREE PROTECTION

FILE NAME H-111	SCALE AS SHOWN
SHEET No. 2 OF 6	MICROFILM No.
SIZE B	DWG No.
REV 0	

NATIVE SEED MIX NOTES

16. NATIVE SEED SHALL BE ORDERED ACCORDING TO APPROVED PLANS. IF CHANGES ARE TO BE MADE TO SEED MIX BASED ON SITE CONDITIONS APPROVAL MUST BE PROVIDED BY CITY ENVIRONMENTAL PLANNER.
17. TREAT NATIVE SEED MIX AREA PRIOR TO INSTALLATION OF SEED WITH APPROPRIATE HERBICIDE TO HELP CONTROL HERBACEOUS WEED SPECIES. ONLY AFTER APPROPRIATE TIME PERIOD APPLY NATIVE SEED AS CALLED FOR ON APPROVED PLANS.
18. PRIOR TO SEEDING SOIL WILL BE AERATED AS NECESSARY. APPROPRIATE NATIVE SEEDING EQUIPMENT WILL BE USED (STANDARD TURF OR AGRICULTURE SEEDING EQUIPMENT SHALL NOT BE USED).
19. THE GROUND SHALL BE CULTIVATED LIGHTLY THEN SEEDED IN TWO DIRECTIONS TO DISTRIBUTE SEED EVENLY OVER ENTIRE AREA.
20. DRILL SEED APPLICATION RECOMMENDED PER SPECIFIED APPLICATION RATE TO NO MORE THAN 1/2 INCH DEPTH. IF BROADCAST SEEDING - DOUBLE THE SPECIFIED APPLICATION RATE. REFER TO NATIVE SEED MIX TABLE ON APPROVED PLANS FOR SPECIES, PERCENTAGES AND APPLICATION RATES.
21. AFTER SEEDING THE AREA SHALL BE COVERED WITH CRIMPED STRAW OR OTHER APPROPRIATE EROSION CONTROL METHODS. CONTRACTOR SHALL MONITOR SEEDED AREA FOR PROPER EROSION CONTROL, GERMINATION AND RESEEDING AS NEEDED TO ESTABLISH COVER.
22. THE APPROVED SEED MIX AREA IS INTENDED TO BE MAINTAINED IN A NATURAL-LIKE LANDSCAPE AESTHETIC. IF AND WHEN MOWING OCCURS IN NATIVE GRASS SEED MIX AREAS, DO NOT MOW LOWER THAN SIX TO EIGHT INCHES IN HEIGHT TO AVOID INHIBITING NATIVE PLANT GROWTH.
23. NATIVE SEED AREA WILL BE CONSIDERED ESTABLISHED WHEN 70% TOTAL COVER IS REACHED WITH NO LARGER THAN SIX INCH SQUARE BARE SPOTS AND/OR UNTIL DEEMED ESTABLISHED BY CITY ENVIRONMENTAL PLANNER.

24. SEED MIX USED SHALL BE:

MIX A – UPLAND SEED

SCIENTIFIC NAME	COMMON NAME	LBS/PLS.ACRE
<i>Gaillardia aristata</i>	Indian blanketflower	5.94
<i>Ratibida columnifera</i>	Mexican Hat	0.65
<i>Bouteloua curtipenula</i>	Side Oats Grama	3.69
<i>Bouteloua gracilis</i>	Blue Grama	0.81
<i>Panicum virgatum</i>	Switchgrass	2.27
<i>Pascopyrum smithii</i>	Western Wheatgrass	5.17
Mix total		18.54

25. CONTRACTOR IS RESPONSIBLE FOR SOURCING AND PURCHASING ALL SPECIES LISTED AND MIX. CONTRACTOR IS RESPONSIBLE FOR PROVIDING SEED TAGS TO APPROPRIATE CITY STAFF. THIS MIX INCLUDES PURE LIVE SEED (PLS); CONTRACTOR MUST ORDER IT THAT WAY.
26. MIX REPRESENTS ONE ACRE AT 90 SEEDS/SF. CONTRACTOR IS RESPONSIBLE FOR CALCULATING THE APPROPRIATE SEED AMOUNTS TO PURCHASE.
27. ALL MATERIALS FURNISHED SHALL BE FREE OF COLORADO STATE NOXIOUS WEEDS AS DEFINED IN ARTICLE III, SECTION 21-40 OF THE CODE OF THE CITY OF FORT COLLINS.
28. PLEASE APPROVE ANY CHANGES TO THIS SEED MIX BY CITY OF FORT COLLINS. FOR QUESTIONS OR CONCERNS, PLEASE CONTACT: MISSY NELSON (MNELSON@FCGOV.COM / 970.416.8077).

REVEGETATION SCHEDULE

29. EXCAVATION AND GRADING MY ORDINARILY OCCUR WITHIN ANY MONTH OF THE YEAR; HOWEVER, REVEGETATION ACTIVITIES ARE TYPICALLY MORE LIMITED WITH RESPECT TO THE TIME OF YEAR IN WHICH THEY SHOULD BE COMPLETED AND MUST BE TIMED TO COINCIDE WITH A RECOGNIZED PLANTING SEASON. SEEDBED MATERIAL SAMPLING, FERTILIZATION, SEEDBED PREPARATION, SEEDING, AND MULCHING ARE MOST SUCCESSFUL WHEN COMPLETED IN FALL, PRIOR TO THE FIRST HARD FREEZE.

LOW MAINTENANCE GRASS NOTES

30. MOWING: MOW LOW MAINTENANCE GRASSES AND WETLANDS GRASSES ONLY AFTER THEY HAVE PRODUCED MATURE SEEDS AND/OR GONE DORMANT FOR THE WINTER OR FOR WEED CONTROL.
31. WATERING: WATER AS FREQUENTLY AS NEEDED TO OBTAIN PLANT ESTABLISHMENT (USUALLY 6 TO 8 WEEKS) AND THEREAFTER AS NEEDED TO AVOID DIEBACK. APPLY WATER SLOWLY AND DEEPLY TO PREVENT RUNOFF AND ENCOURAGE DEEP ROOT GROWTH.
32. WEED CONTROL: LANDSCAPE COMPANY SHALL PROVIDE A WEED MANAGEMENT PLAN WHICH IS CRITICAL DURING THE ESTABLISHMENT YEARS.
33. CONTRACTOR IS REQUIRED TO EMAIL PARKSHOP@FCGOV.COM 1 WEEK PRIOR TO SPRAYING FOR WEEDS. (PARK DEPARTMENT IS RESPONSIBLE FOR AND REQUIRED TO NOTIFY THE PUBLIC BY POSTING ON WEBSITE.)
35. SPECIAL CARE AND LICENSING REQUIRED FOR WEED HERBICIDE USE ADJACENT TO RIPARIAN AREAS. IT IS THE CONTRACTOR'S RESPONSIBILITY TO FOLLOW ALL LAWS AND REGULATIONS.

WEED CONTROL NOTES:

35. A WEED CONTROL PLAN WILL BE PREPARED OR OTHERWISE APPROVED BY A LICENSED COMMERCIAL PESTICIDE APPLICATOR (LCPA). ALL SUBSEQUENT WEED CONTROL ACTIVITIES WILL BE CONDUCTED BY AN LCPA. THE PLAN TO BE PREPARED WILL TAKE THE FORM OF AN INTEGRATED PEST MANAGEMENT (IPM) PLAN THAT WILL CONSIDER METHODS OF CONTROL THAT WOULD POTENTIALLY BE APPLICABLE TO THE PROJECT AREA. THESE METHODS INCLUDE MECHANICAL, CHEMICAL, CULTURAL, AND BIOLOGICAL TECHNIQUES.
36. PRIOR TO PLAN PREPARATION, A VISIT TO THE PROJECT AREA WILL BE CONDUCTED BY THE IPM PLAN PREPARER, ACCOMPANIED BY A CITY OF FORT COLLINS STAFF MEMBER, TO ASSESS SITE CONDITIONS, ROUTES OF ACCESS, WEEDY SPECIES PRESENT, THE RELATIONSHIP OF SURROUNDING WATER/WETLAND BODIES TO THE PROPOSED AREAS TO BE TREATED, POTENTIAL SOURCES OF RUN-ON AND RUN-OFF, AND OTHER FACTORS RELEVANT TO THE WEED CONTROL PLANNING PROCESS.
37. GIVEN THE PRESENCE OF WETLANDS ADJACENT THE PROJECT AREA, INITIAL EMPHASIS WILL BE GIVEN TO WEED CONTROL METHODS OTHER THAN THOSE OF A CHEMICAL NATURE, THOUGH CHEMICAL CONTROLS DO EXIST THAT ARE CONSIDERED BY THE CORPS OF ENGINEERS TO BE APPROPRIATE IN SUCH CASES.
38. PLANT SPECIES TO BE CONSIDERED AS WEEDS AND CONTROLLED AND/OR ERADICATED WITHIN THE PROJECT LIMITS, AS PER CITY CODE, ARE THOSE LISTED BY THE LARIMER COUNTY WEED CONTROL DISTRICT AND THOSE LISTED AS NOXIOUS BY THE COLORADO WEED LAW.

REV	DATE	PROJ. No.	REVISION DESCRIPTION	DWN	DSN	ENG	CHK	FILM



**XCEL ENERGY TVC
H-111 REGULATOR STATION REBUILD
RECLAMATION PLAN**

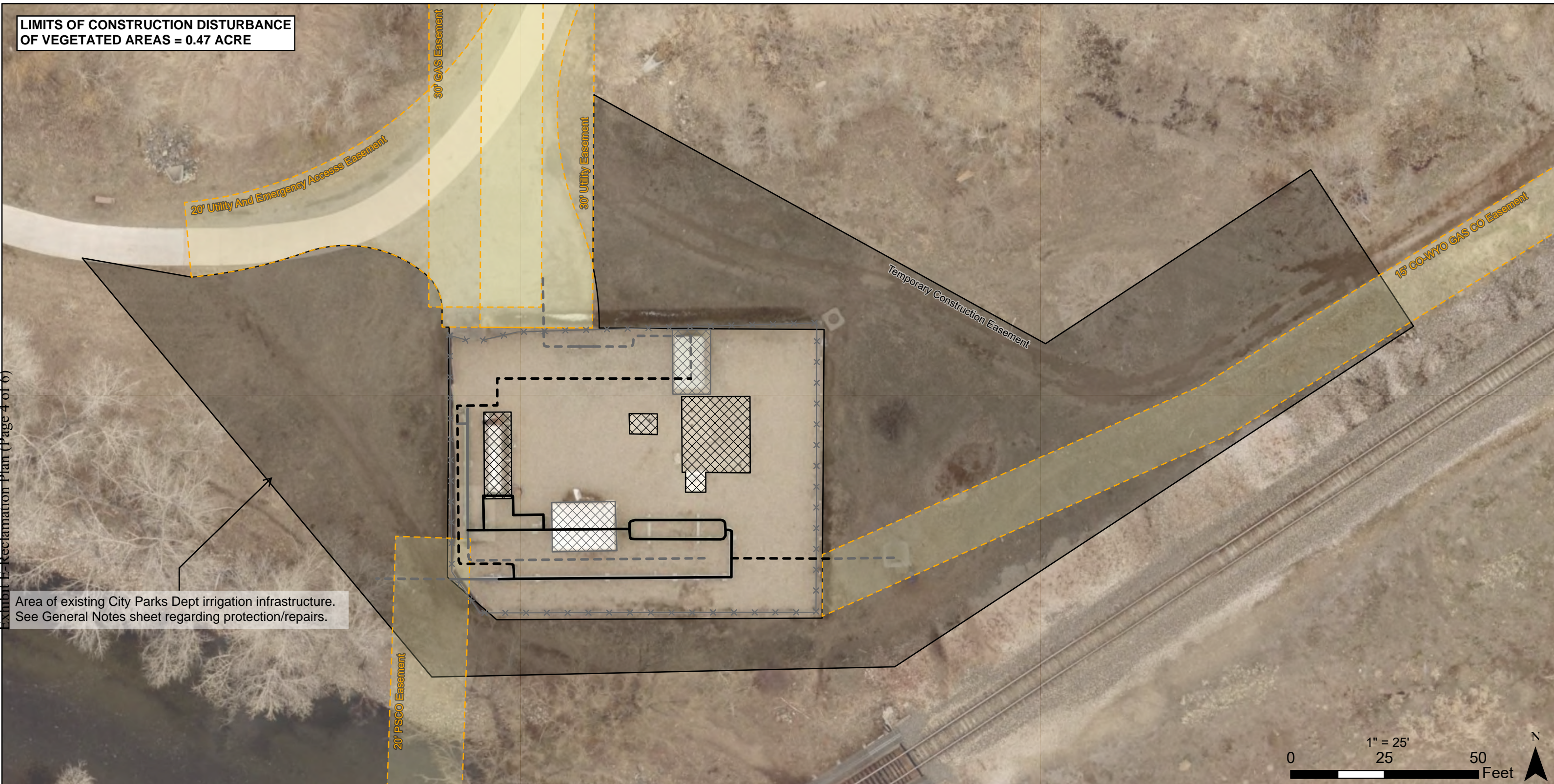
NOTES: REVEGETATION/WEED CONTROL

FILE NAME H-111	SCALE AS SHOWN
SHEET No. 3 OF 6	MICROFILM No.
SIZE B	DWG No.
REV 0	

Exhibit E-Reclamation Plan (Page 3 of 6)

LIMITS OF CONSTRUCTION DISTURBANCE
OF VEGETATED AREAS = 0.47 ACRE

Exhibit E-Reclamation Plan (Page 4 of 6)



Area of existing City Parks Dept irrigation infrastructure.
See General Notes sheet regarding protection/repairs.



**XCEL ENERGY TVC
H-111 REGULATOR STATION
REBUILD
RECLAMATION PLAN**

MAP: ACTIVE
CONSTRUCTION PHASE

SHEET 4 OF 6

- | | |
|---|---|
| <p>PIPING</p> <p>— FOR REMOVAL, ABOVE GRADE</p> <p>- - - FOR REMOVAL, BELOW GRADE</p> <p>— EXISTING, ABOVE GRADE</p> <p>- - - EXISTING, BELOW GRADE</p> | <p>●● BOLLARD</p> <p>××× FENCE</p> <p>▨ REGULATOR BUILDING</p> <p>▩ FOUNDATION FOR REMOVAL</p> <p>--- UTILITY/SHARED ACCESS EASEMENT</p> <p>■ TEMPORARY CONSTRUCTION EASEMENT</p> |
|---|---|

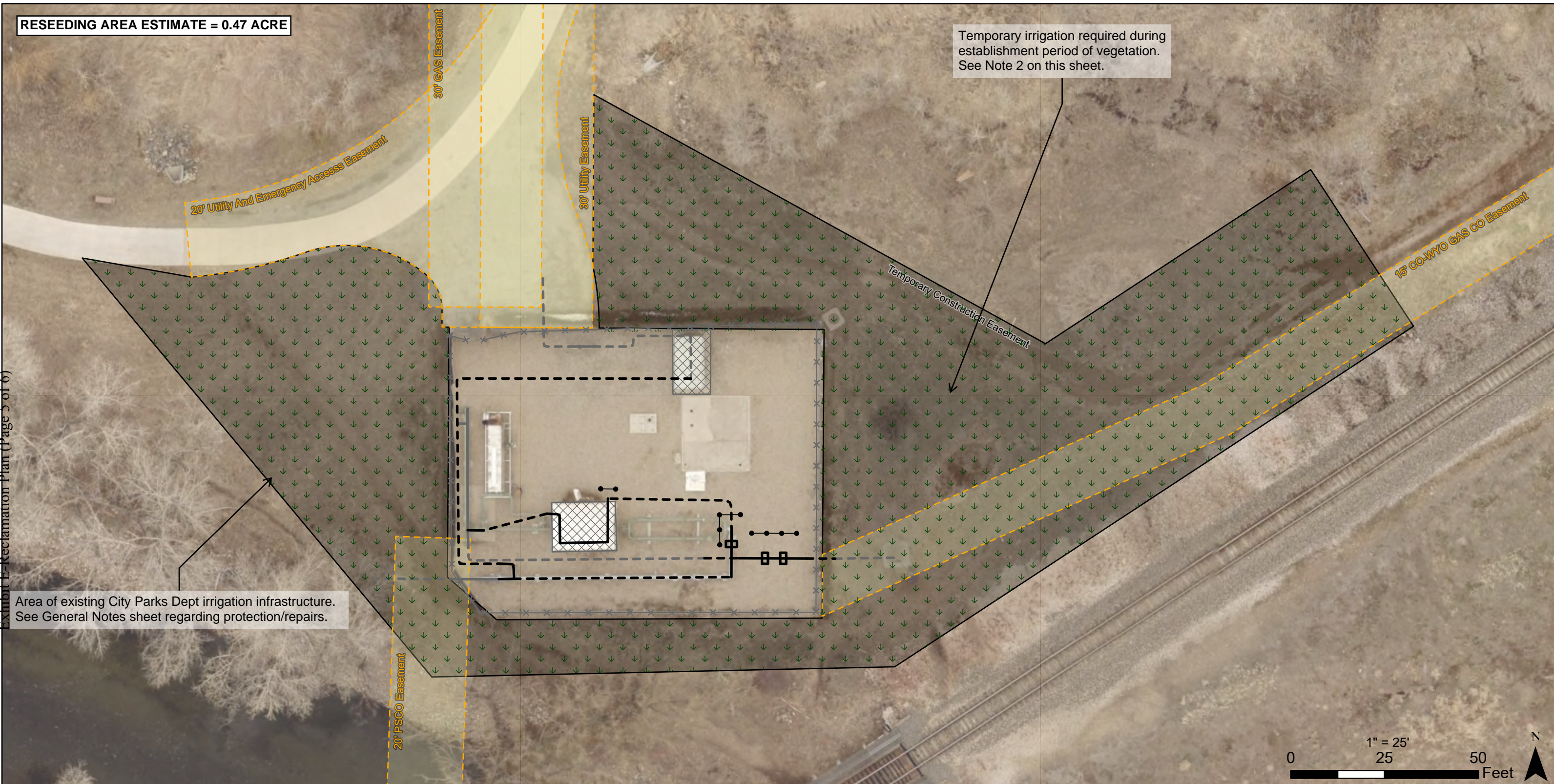
1. Temporary Construction Easement (TCE) represents maximum expected limits of disturbance (LOD) outside of Xcel Energy fence-line. Total limits of construction activity (LOC) or Project extents include access easements which are stabilized with pavement or aggregate surfacing.
2. Map will be updated following on-site meeting with City Parks. Project team will update map with required extents of tree protective fencing prior to mobilizing to site.
3. Map will be updated to indicate trees and shrubs which will be protected and those which will be removed. Contractor must adhere to protective measures included in this reclamation plan.
4. Where repeated driving, excavation, or disturbances are expected to cause topsoil to be mixed with subsoil, topsoil should be stripped and stockpiled for use in reclamation efforts.

RESEEDING AREA ESTIMATE = 0.47 ACRE

Temporary irrigation required during establishment period of vegetation. See Note 2 on this sheet.

Exhibit E-Reclamation Plan (Page 5 of 6)

Area of existing City Parks Dept irrigation infrastructure. See General Notes sheet regarding protection/repairs.



**XCEL ENERGY TVC
H-111 REGULATOR STATION
REBUILD
RECLAMATION PLAN**

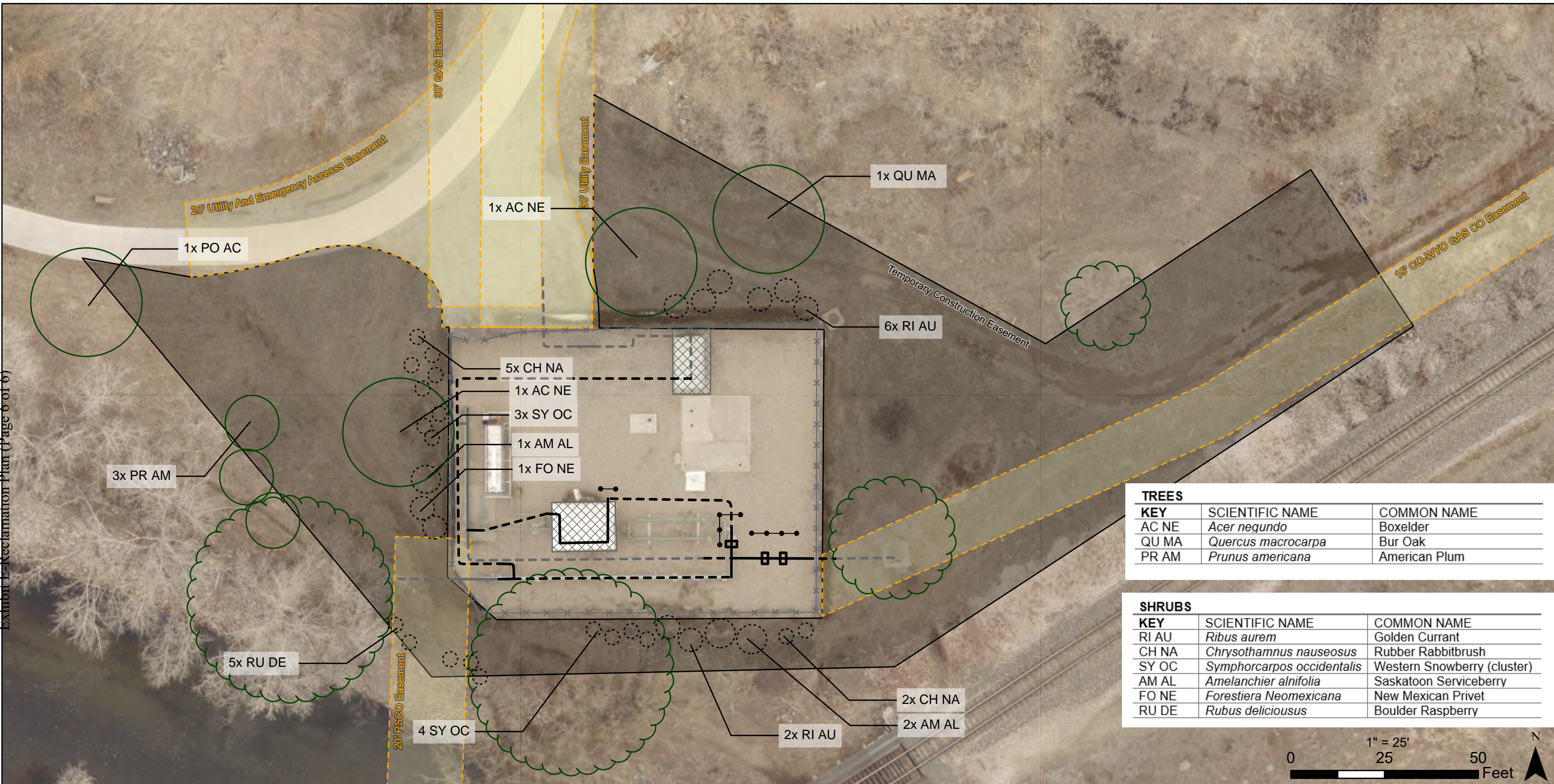
MAP: RECLAMATION PHASE



SHEET 5 OF 6

PIPING		●—● BOLLARD
—	PROPOSED, ABOVE GRADE	×—× FENCE
- - -	PROPOSED, BELOW GRADE	□ PIPING SUPPORT
—	EXISTING, ABOVE GRADE	▨ REGULATOR BUILDING
- - -	EXISTING, BELOW GRADE	▭ UTILITY/SHARED ACCESS EASEMENT
		▭ TEMPORARY CONSTRUCTION EASEMENT
		↓ ↓ ↓ SEED / MULCH APPLICATION AREA

1. Calculated reseeding area: 0.47 acre. Contractor will reseed per notes included on Sheet 3 of this Reclamation Plan.
2. Temporary irrigation to be installed and maintained at east side of Temporary Construction Easement. See Note 31 on Sheet 3 regarding watering frequency.
3. Fencing and other physical protective measures for trees may be removed following demobilization of construction crews and heavy equipment (typically following application of seed and mulch).
4. Weed mitigation must follow IPM Plan, additional notes included on Sheet 3 of this reclamation Plan.



TREES		
KEY	SCIENTIFIC NAME	COMMON NAME
AC NE	<i>Acer negundo</i>	Boxelder
QU MA	<i>Quercus macrocarpa</i>	Bur Oak
PR AM	<i>Prunus americana</i>	American Plum

SHRUBS		
KEY	SCIENTIFIC NAME	COMMON NAME
RI AU	<i>Ribes aurem</i>	Golden Currant
CH NA	<i>Chrysothamnus nauseosus</i>	Rubber Rabbitbrush
SY OC	<i>Symphoricarpos occidentalis</i>	Western Snowberry (cluster)
AM AL	<i>Amelanchier alnifolia</i>	Saskatoon Serviceberry
FO NE	<i>Forestiera Neomexicana</i>	New Mexican Privet
RU DE	<i>Rubus deliciosus</i>	Boulder Raspberry



**XCEL ENERGY TVC
H-111 REGULATOR STATION
REBUILD
RECLAMATION PLAN**

MAP: SHRUB /TREE
INVENTORY

SHEET 6 OF 6

- PIPING**
- PROPOSED, ABOVE GRADE
 - - - PROPOSED, BELOW GRADE
 - EXISTING, ABOVE GRADE
 - - - EXISTING, BELOW GRADE
 - × × × FENCE
 - UTILITY/SHARED ACCESS EASEMENT
 - TEMPORARY CONSTRUCTION EASEMENT

- PRE-EXISTING TREES
- FC PARKS INSTALLED TREES
- FC PARKS INSTALLED SHRUBS

1. Existing tree/shrubs depicted based on City provided landscaping plan and must be verified during site visit with PSCo (or their contractors) and City staff. FC Parks installed trees depicted at mature crown size.
2. Pre-existing trees will be protected per Tree Protection Notes on Sheet 2 of this reclamation plan.
3. FC Parks installed trees to be inventoried per Tree Protection Notes, those which are expected to be damaged by construction indicated as such in the inventory and those which can be protected will be done so per specifications included on Sheet 2 of this reclamation plan.
4. FC Parks installed shrubs within the TCE will be inventoried, PSCo to compensate Parks Department for loss of shrubs per Note 8 on Sheet 2 of this reclamation plan.