



Urban Forest Strategic Plan

Dean Klingner

Community Services Director

Kendra Boot

City Forester



City of
Fort Collins

Feedback Sought from Council

1. Do Councilmembers have feedback regarding the Urban Forest Strategic Plan and the Future Growth Strategies?
2. How can Growth Strategy 3 further support Council Priorities?



Timeline



Outcome Area and Council Priority Alignment



Previous Council Priorities 2021-2023

- Tree planting subsidy (GS1, GS6)
- Improve tree policies (GS3, GS5)

Current Council Priorities 2024-2026

- Improve human and social health for vulnerable populations (GS1, GS2, GS6, GS7)
- Advance a 15-minute City igniting neighborhood centers and accelerating shift to Active Modes (GS1, GS4, GS6)
- Reduce climate pollution and air pollution through best practices (GS1, GS2, GS3, GS6, GS7)

Other Council Priority Alignment

- Zero waste (GS3, GS6)
- Protect community water systems in an integrated way to ensure resilient water resources and healthy watersheds (GS1)
- Modernize and update City Charter (GS3, GS6)

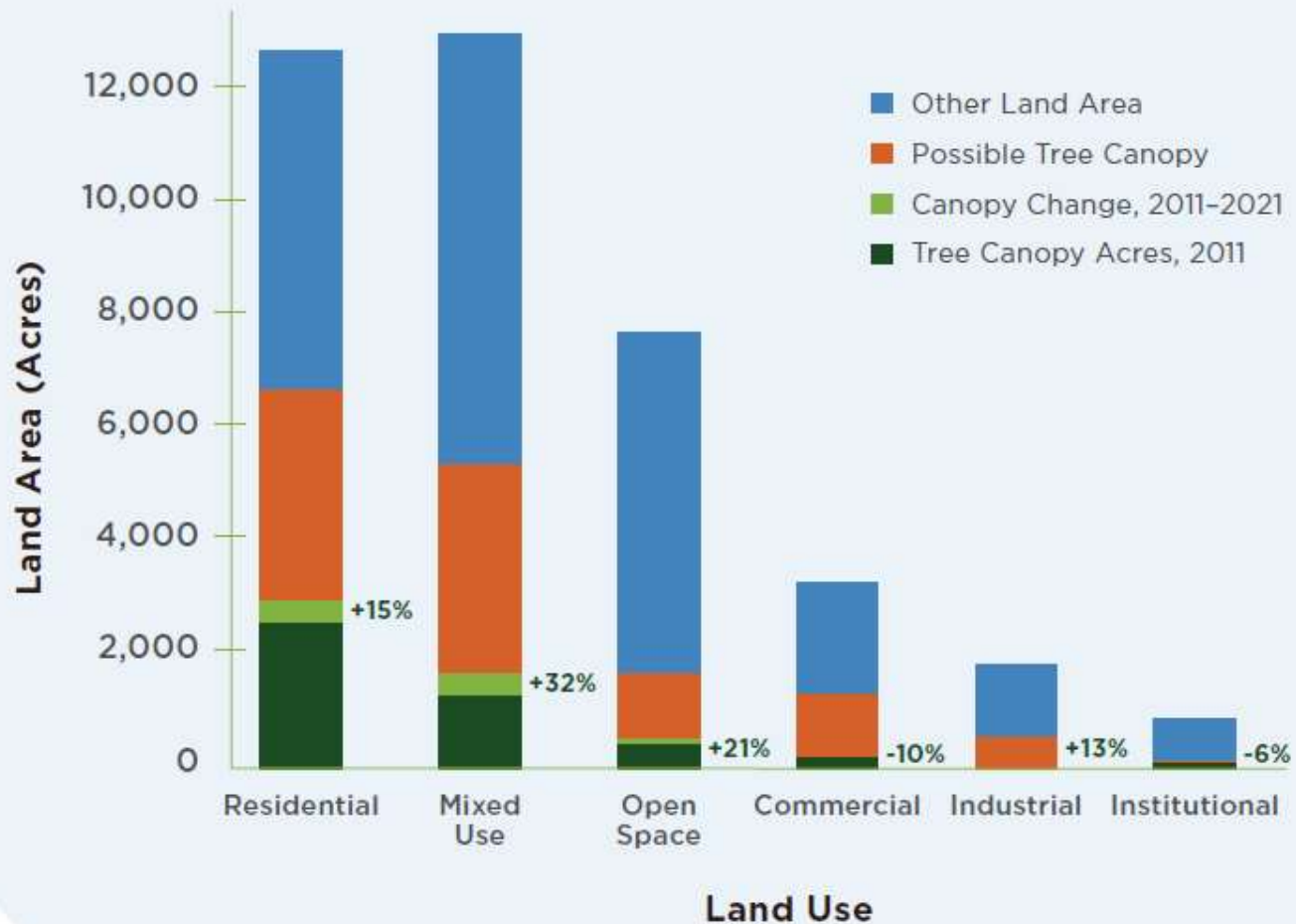
Note: GS = Growth Strategy from Urban Forest Strategic Plan draft



2024 STRATEGIC PLAN



TREE CANOPY COVER BY LAND USE TYPE, 2011-2021

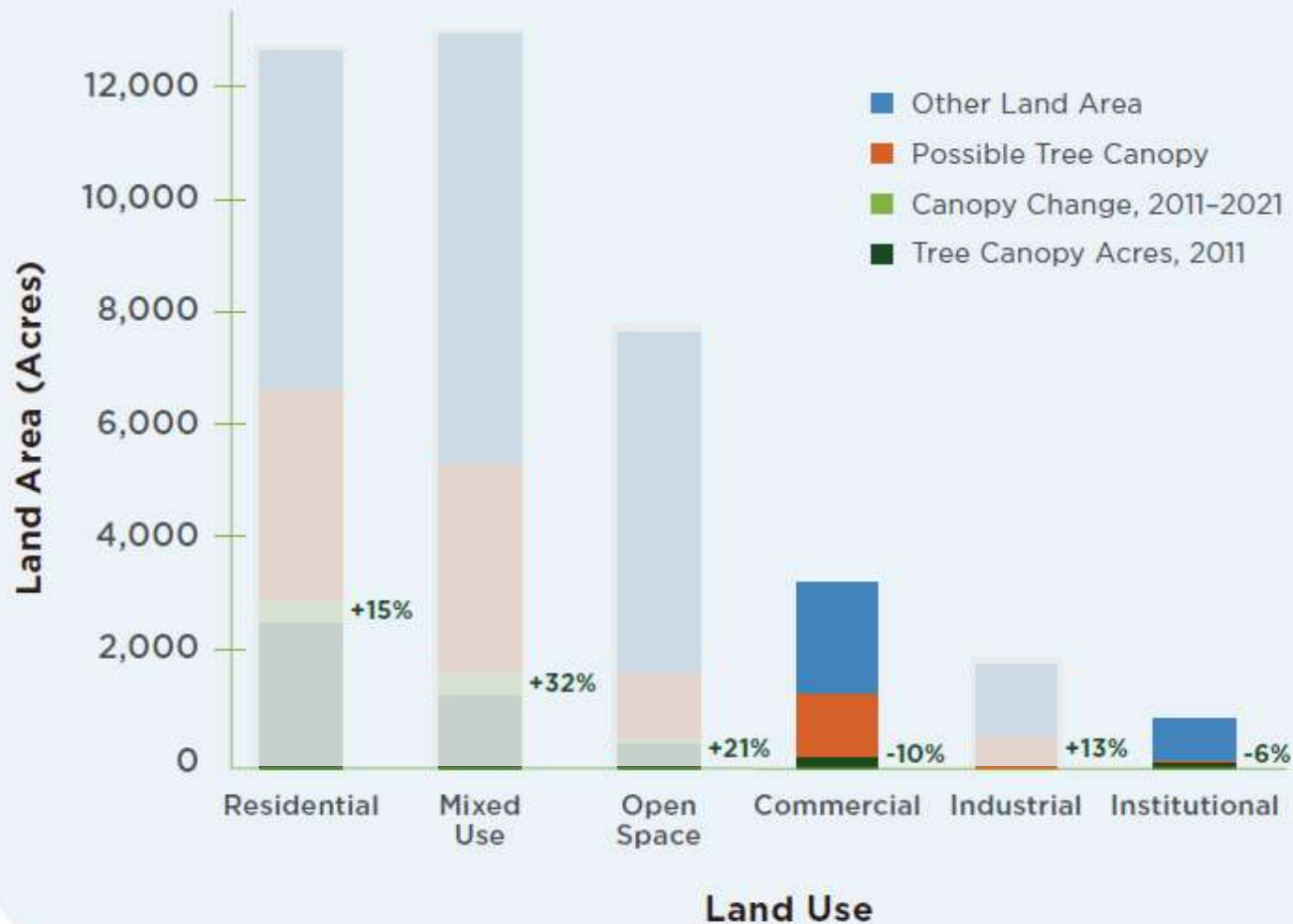


ACROSS FORT COLLINS

- Canopy has grown in most Land Use Types
- Residential and Mixed-use greatest opportunity
 - 8,083 acres of potential tree canopy
- Commercial and Institutional have lost canopy

ACROSS FORT COLLINS

TREE CANOPY COVER BY LAND USE TYPE, 2011-2021



Possible drivers for canopy loss:

- Trees aging out
- Urban environmental stressors
- Development (both new and infill)

7 Proposed Growth Strategies

1. Strategically invest in growing tree canopy where it will promote resilience and quality of life in Fort Collins.

2. Complete the shift to proactive management of Fort Collins' public trees.

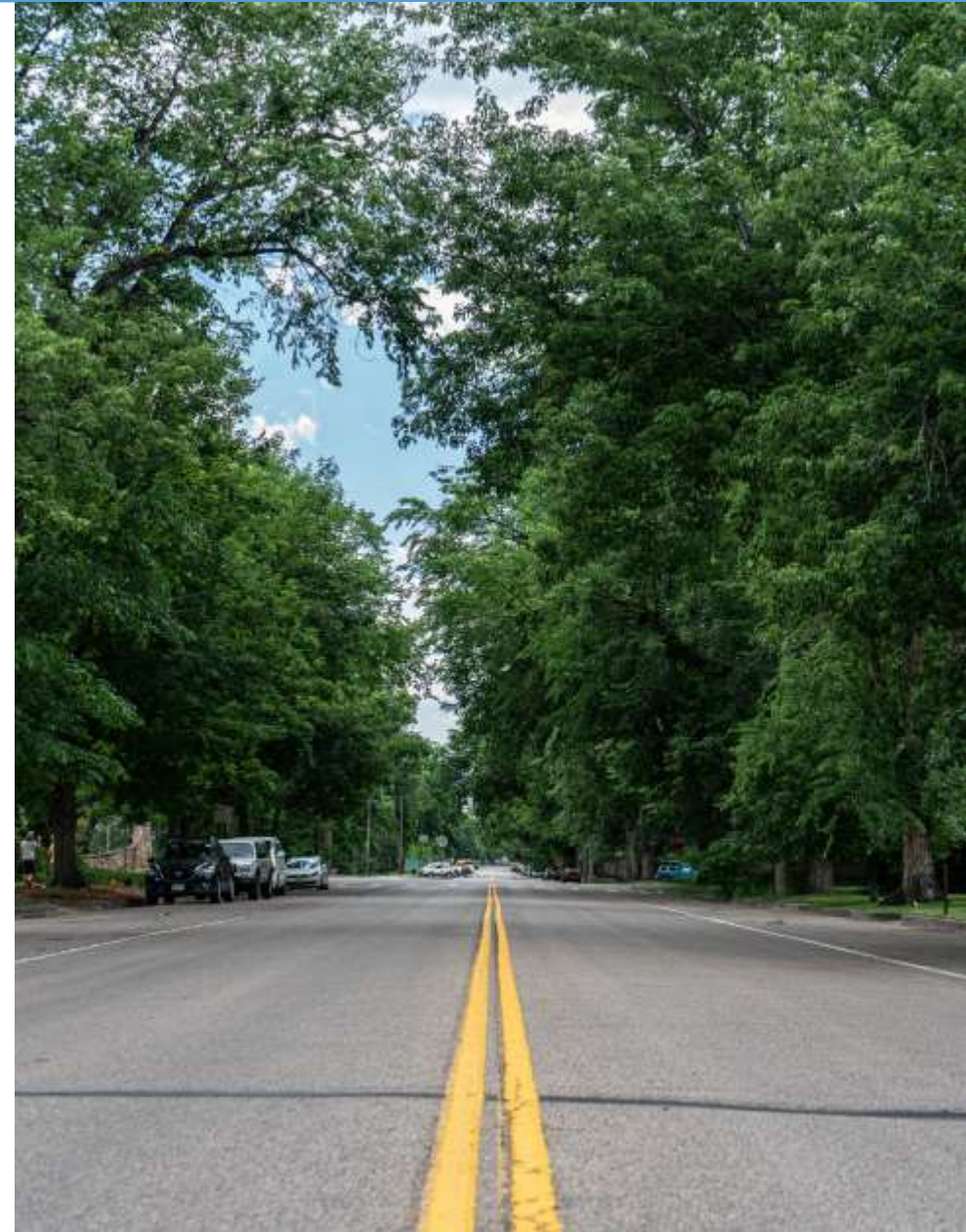
3. Strengthen city policies to protect trees.

4. Collect data to track changes to tree canopy over time and to inform forestry activities.

5. Sustainably resource the Forestry Division to keep pace with growth of the urban forest.

6. Deepen engagement with the community about tree stewardship.

7. Expand the network of Forestry Division partners.



7 Proposed Growth Strategies

1. Strategically invest in growing tree canopy where it will promote resilience and quality of life in Fort Collins.

2. Complete the shift to proactive management of Fort Collins' public trees.

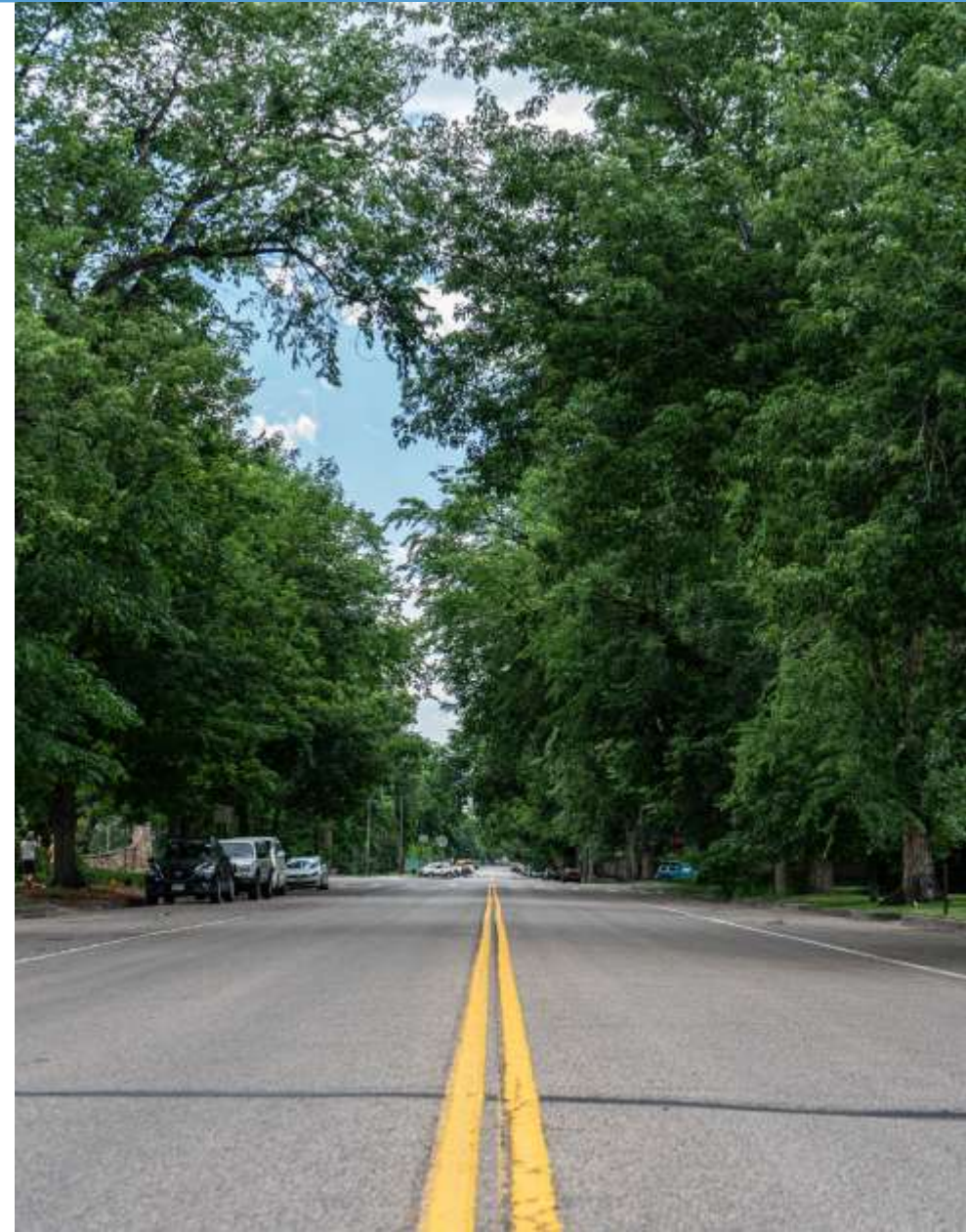
3. Strengthen city policies to protect trees.

4. Collect data to track changes to tree canopy over time and to inform forestry activities.

5. Sustainably resource the Forestry Division to keep pace with growth of the urban forest.

6. Deepen engagement with the community about tree stewardship.

7. Expand the network of Forestry Division partners.





STRENGTHEN CITY POLICIES TO PROTECT TREES

How can this strategy further support Council Priorities?

Foundational Initiative Examples

- Engage and adopt policies balancing other priorities.
- Draft a heritage tree program with elective enrollment.
- Reference existing good practices in city code.

Transformational Initiative Examples

- Clarify the responsibility for trees.
- Demonstrate role of trees in water smart landscapes.
- Explore and expand tree protection policies into Municipal Code.

STRENGTHEN CITY POLICIES TO PROTECT TREES

Potential alternative language: ADAPT CITY POLICIES TO PROTECT TREES

More exploration to be done around tree policy...

How this might be achieved:

- Utilize case studies of past projects for analysis
- Identify potential policy options for infill, greenfield, and other development types
- Analysis will include feasibility study including proforma analysis for various policy scenarios
- Engage with frequent code users to understand pain points for development related to tree policy and test updated policy options
- Present code user supported options at a Council Work Session in 2025

Feedback Sought from Council

1. Do Councilmembers have feedback regarding the Urban Forest Strategic Plan and the Future Growth Strategies?
2. How can Growth Strategy 3 further support Council Priorities?





Thank you!



Additional slides

Following slides are in Council's read before packet

Community Engagement

971 Community Survey responses

3 Community Meetings

8 Community Events

20 City Departments Engaged

29 External Partners Engaged

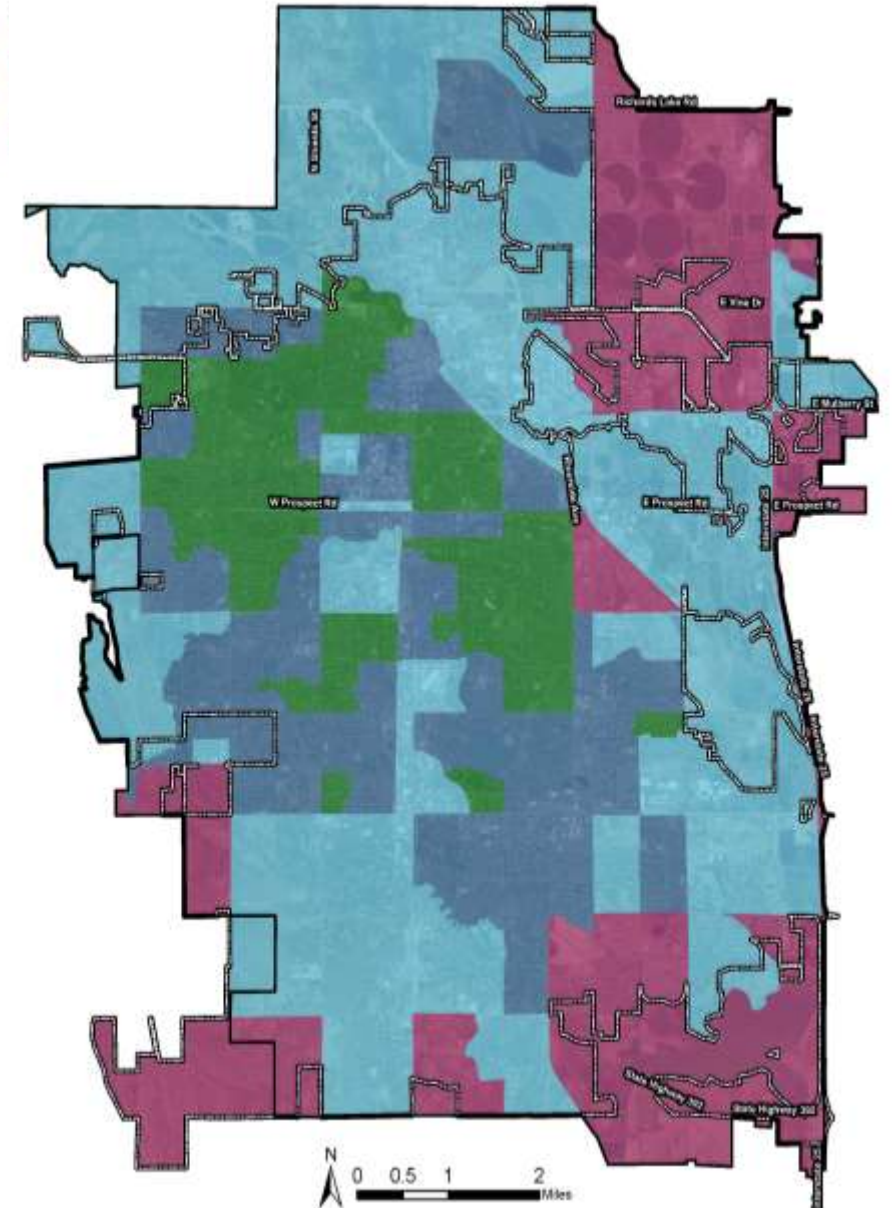
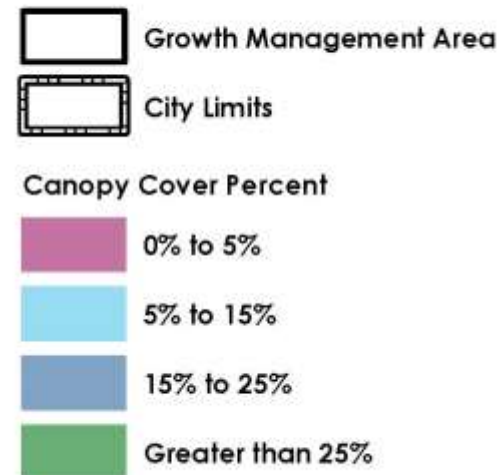
5 Different Boards

2 Public Draft Previews



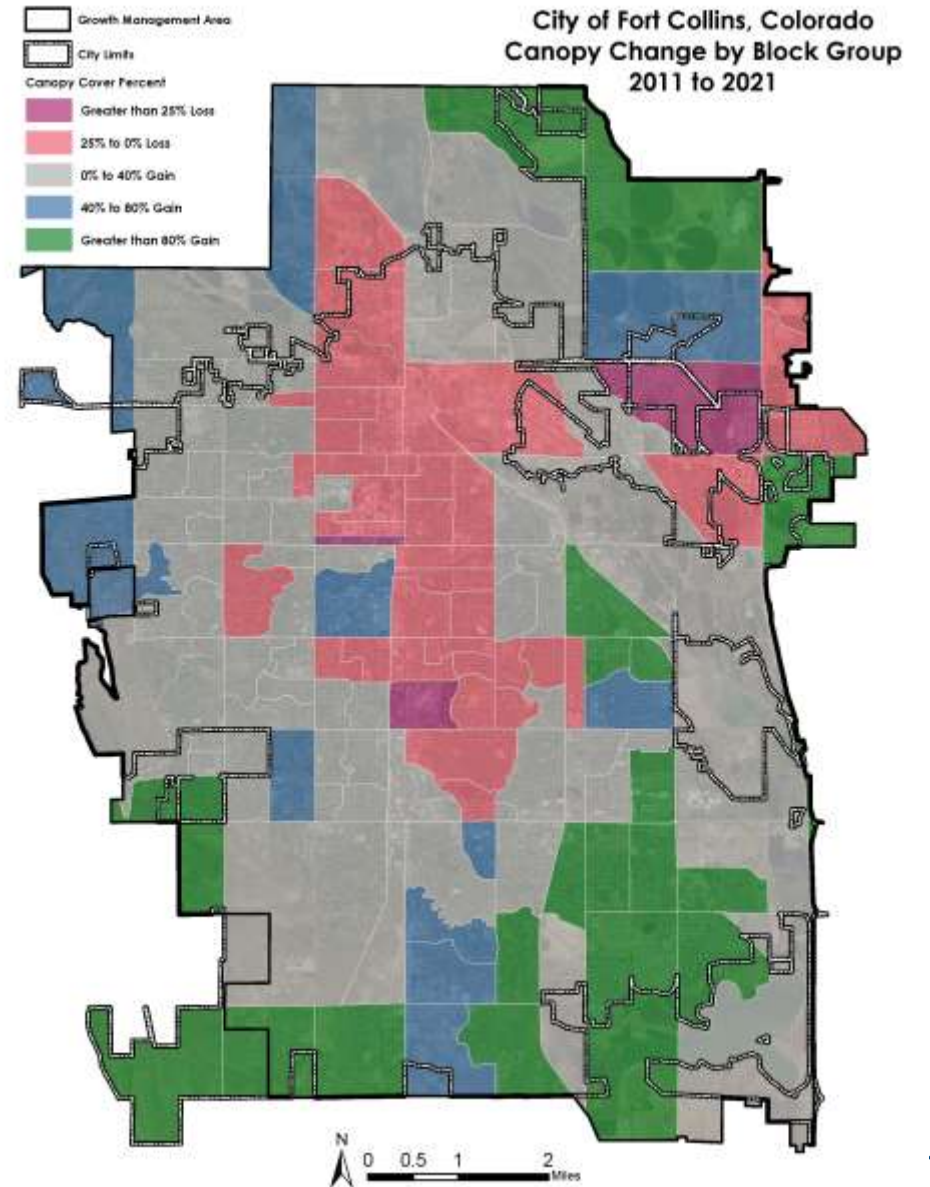
CANOPY PERCENT BY BLOCK GROUP

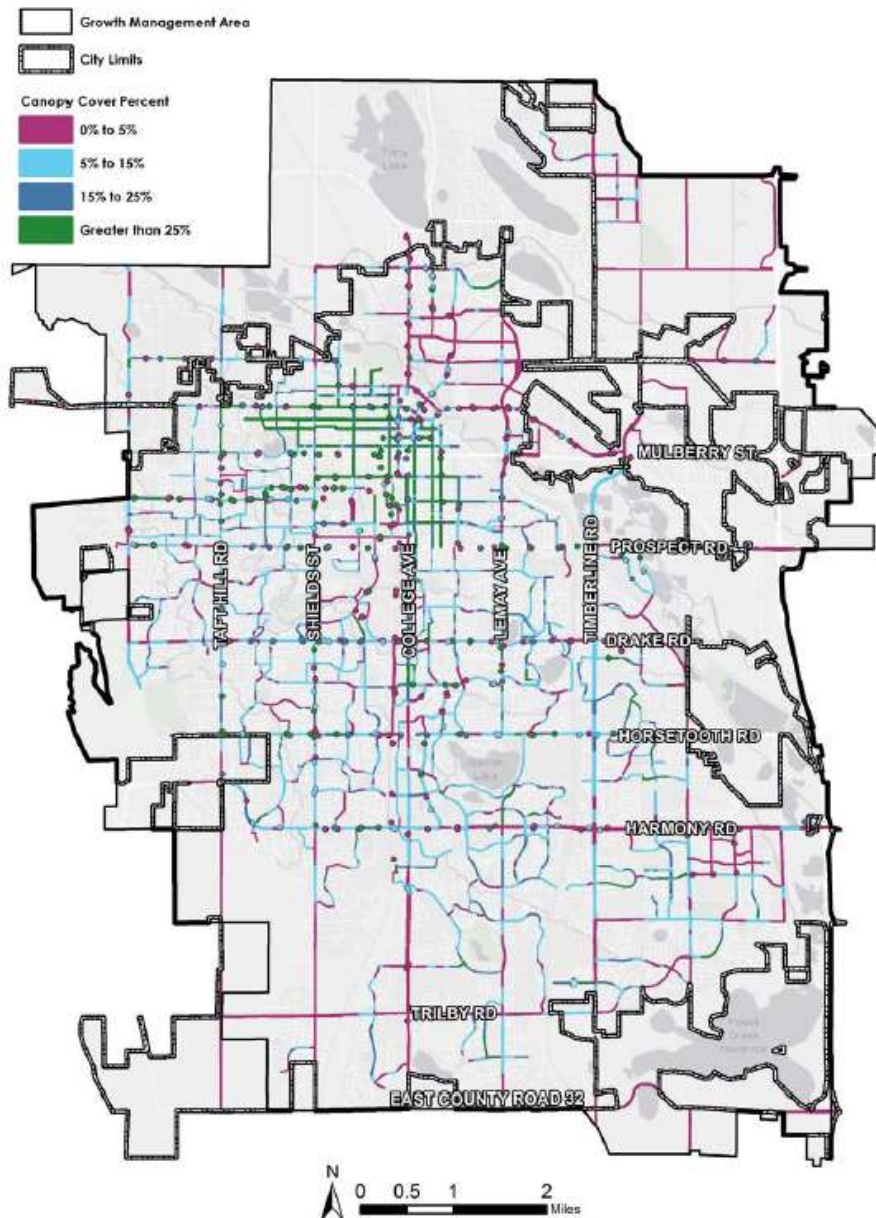
- Citywide: 13.7%
- City + GMA: 12.6%



TREE CANOPY CHANGE 2011–2021

- City Limits: +753 acres (+17.3%)
- City + GMA: +936 acres (+17.2%)



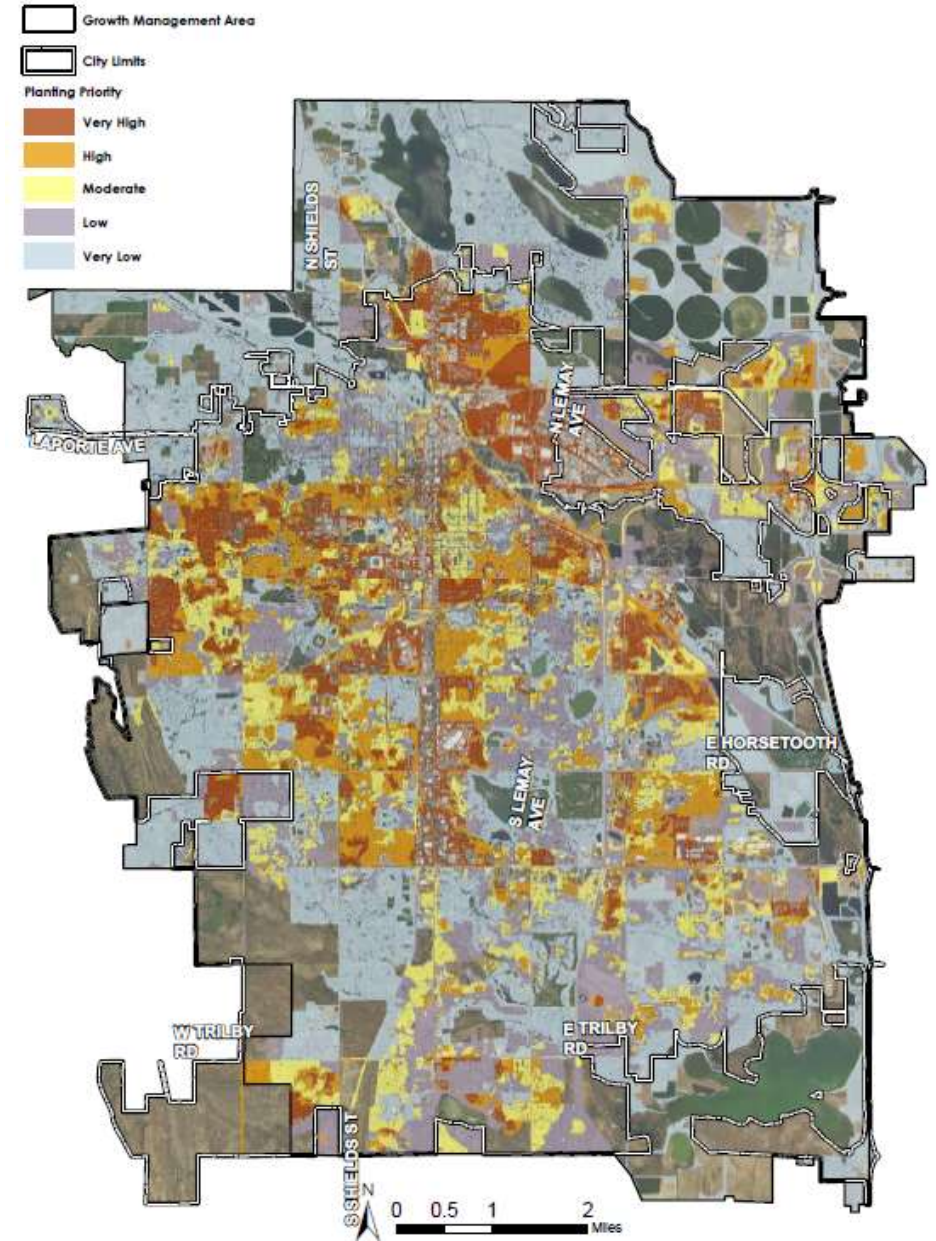


TREES SUPPORT THE SHIFT TO ACTIVE TRANSPORTATION

- Bike lanes
 - 9.5% average tree cover
 - Consistent with 2011
- Bus stops
 - 18.3% average tree cover
 - Have lost 3.7% since 2011

15,418 POTENTIAL NEW CANOPY ACRES

- Classified from Very Low to Very High priority
 - **Social:** income, population density, BIPOC, renters
 - **Health:** asthma, heart disease, mental health
 - **Environmental:** urban heat and stormwater
- 2,251 acres of High or Very High priority
- Can help City plant trees for outcomes



CLIMATE RESILIENCE

- Focus on young tree establishment
- Dedicated irrigation to trees
- Drought response plans
- Drought-tolerant, urban-adapted tree species

Fun Fact:

Close to **70%** of public trees are **drought tolerant!**

Fun Fact:

Mature tree canopy can **reduce outdoor water consumption** by up to **50%**.



- More emphasis on broad benefits of trees, including bird and wildlife habitat
 - p.36 and p. 39
- More connection of how the urban forest supports the 7 City Strategic Outcome Areas (e.g. Economic Health)
 - Throughout the plan, p. 18, p. 60
- Clarify trees and water
 - Drought/climate adaptation section and alignment with Water Efficiency Plan (WEP)
- Clarify and educate on private tree/property owner responsibilities
 - Several plan initiatives, GS3, GS6
- LUC and tradeoffs/tensions between community/organization priorities
 - GS3 and Tree Protection Policies work session in Q1/Q2 2025