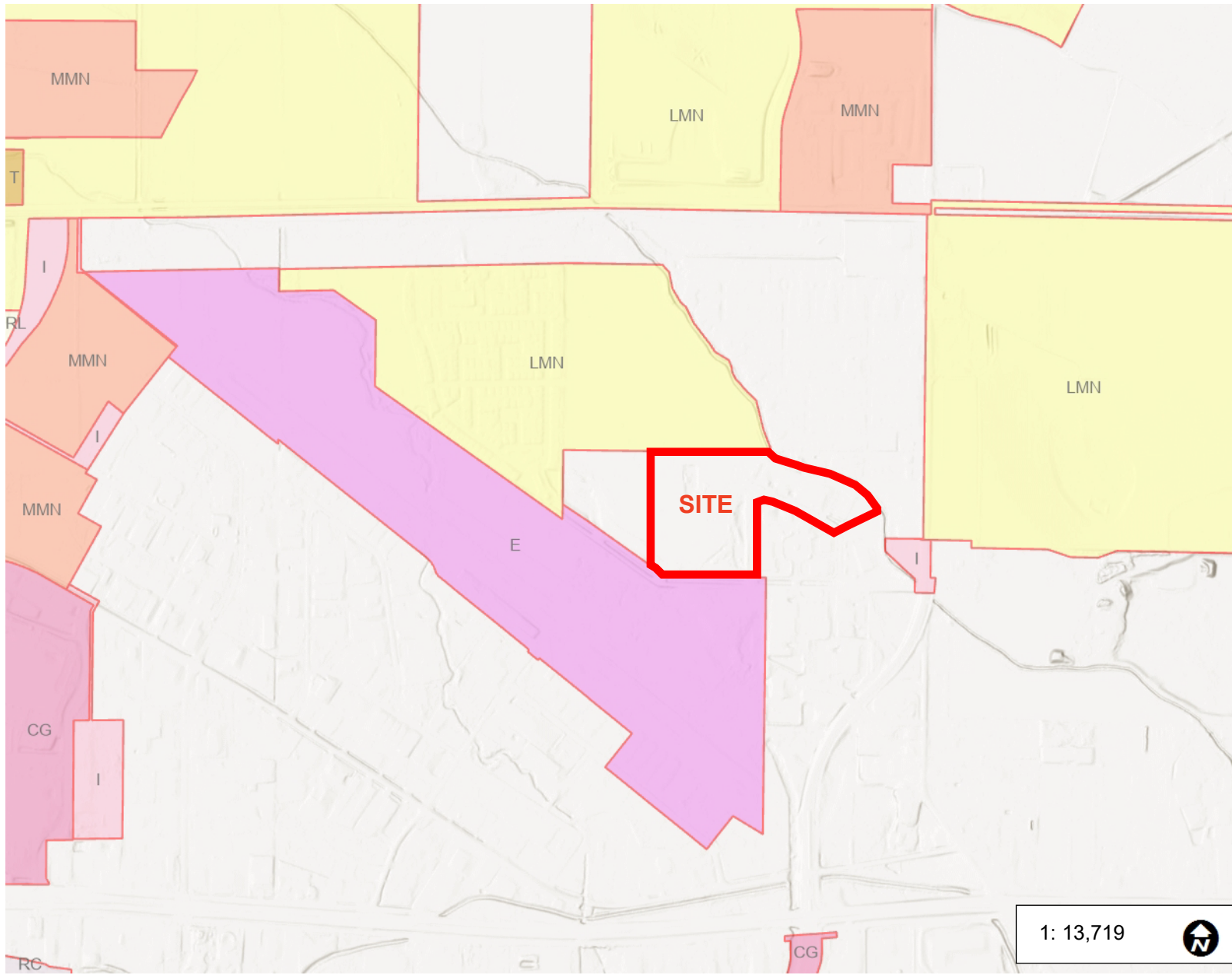


Existing Zoning



- ### Legend
- City Zoning**
- Community Commercial (CC)
 - Community Commercial North Coll
 - Community Commercial Poudre Ri
 - General Commercial (CG)
 - Limited Commercial (CL)
 - Service Commercial (CS)
 - CSU
 - Downtown (D)
 - Employment (E)
 - Harmony Corridor (HC)
 - Industrial (I)
 - High Density Mixed-Use Neighbor
 - Low Density Mixed-Use Neighbor
 - Manufactured Housing (MH)
 - Medium Density Mixed-Use Neighb
 - Neighborhood Commercial (NC)
 - Old Town District - A (OT-A)
 - Old Town District - B (OT-B)
 - Old Town District - C (OT-C)
 - Public Open Lands (POL)
 - River Conservation (RC)
 - River Downtown Redevelopment (F)
 - Residential Foothills (RF)
 - Low Density Residential (RL)
 - Rural Lands District (RUL)
 - Transition (T)
 - Urban Estate (UE)

1: 13,719



2,286.0 0 1,143.00 2,286.0 Feet

WGS_1984_Web_Mercator_Auxiliary_Sphere
City of Fort Collins - GIS

This map is a user generated static output from the City of Fort Collins FCMAPS Internet mapping site and is for reference only. Data layers that appear on this map may or may not be accurate, current, or otherwise reliable.

Notes