

Wastewater Septage Receiving Fee Adjustment

Christina Schroeder

Director, Plant Operations

Joe Wimmer

Director, Utilities Finance



01

Does the Commission support an adjustment to Septage Receiving Fees to recover costs related to the upcoming Septage Receiving Capital Project?

02

Does the Commission support the phased-in approach for fee increases from mid-2026 to 2028?

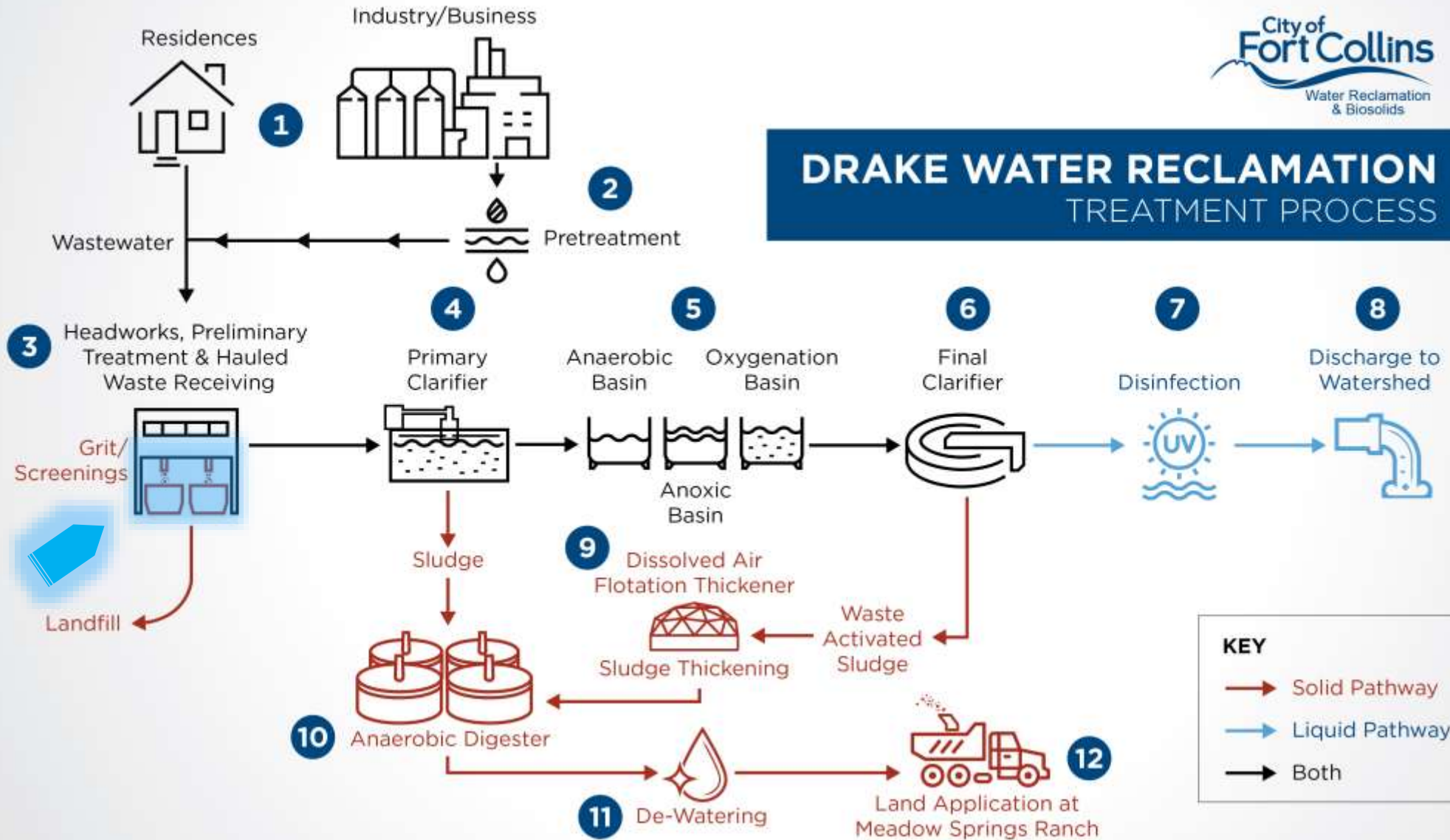
Background

- Drake Water Reclamation Facility (DWRF)
- Septage Receiving Station in operation for over 25 years.
- Hauled waste services include septic tanks, portable rentals, vault toilets, etc.
- Haulers are approved through an application system. Domestic wastewater only.
- Haulers are required to identify source, volume discharged.
- Subject to random sampling.



DWRF – Headworks, Preliminary Treatment, and Septage Receiving

DRAKE WATER RECLAMATION TREATMENT PROCESS



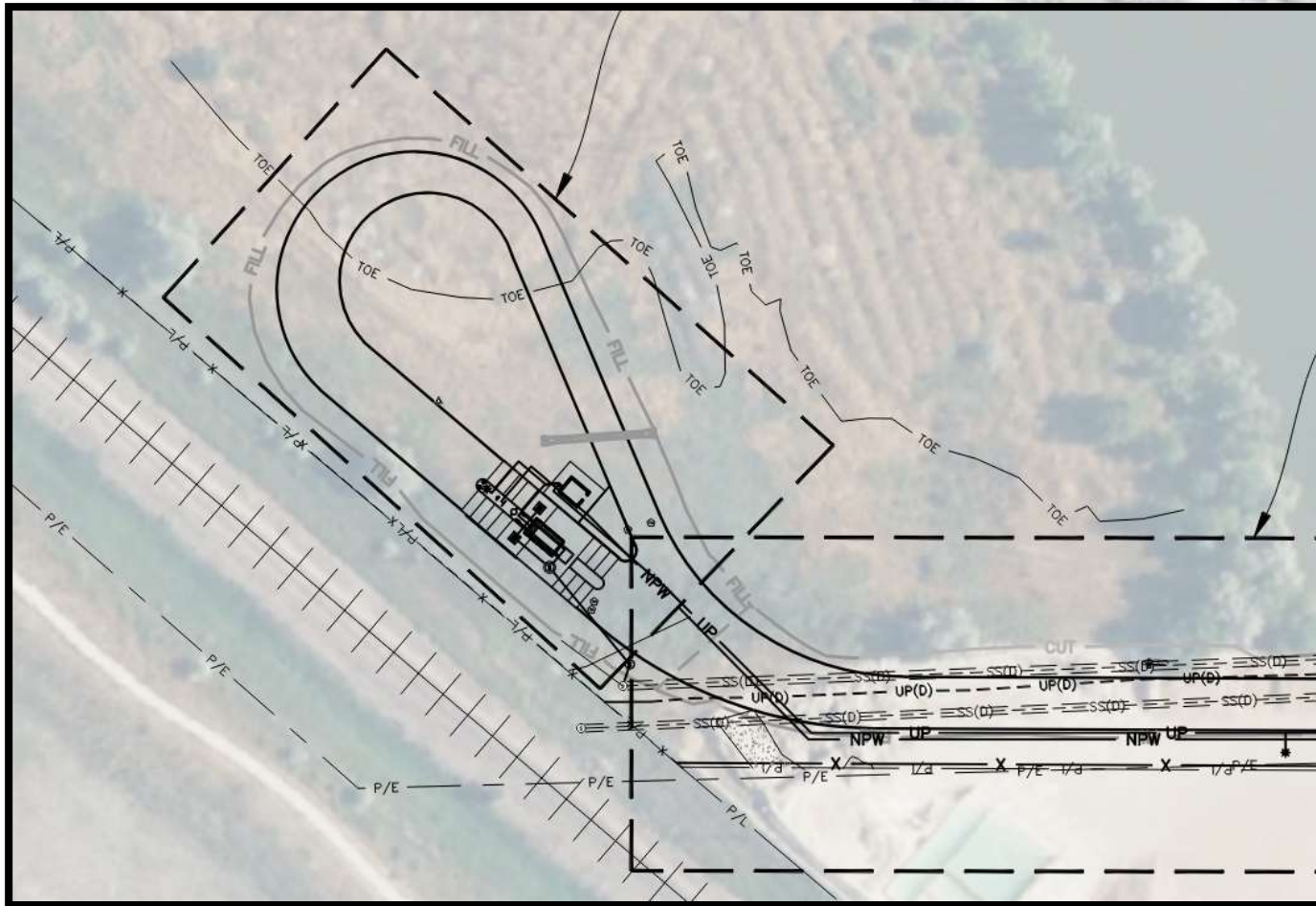
Septage Receiving Station Capital Project



Project Goal: Remove septage receiving from Headworks Building to a new location within the DWRF property. Address safety and regulatory compliance.



Septage Receiving Station Capital Project



DWRF Septage Receiving Station – 90% Design

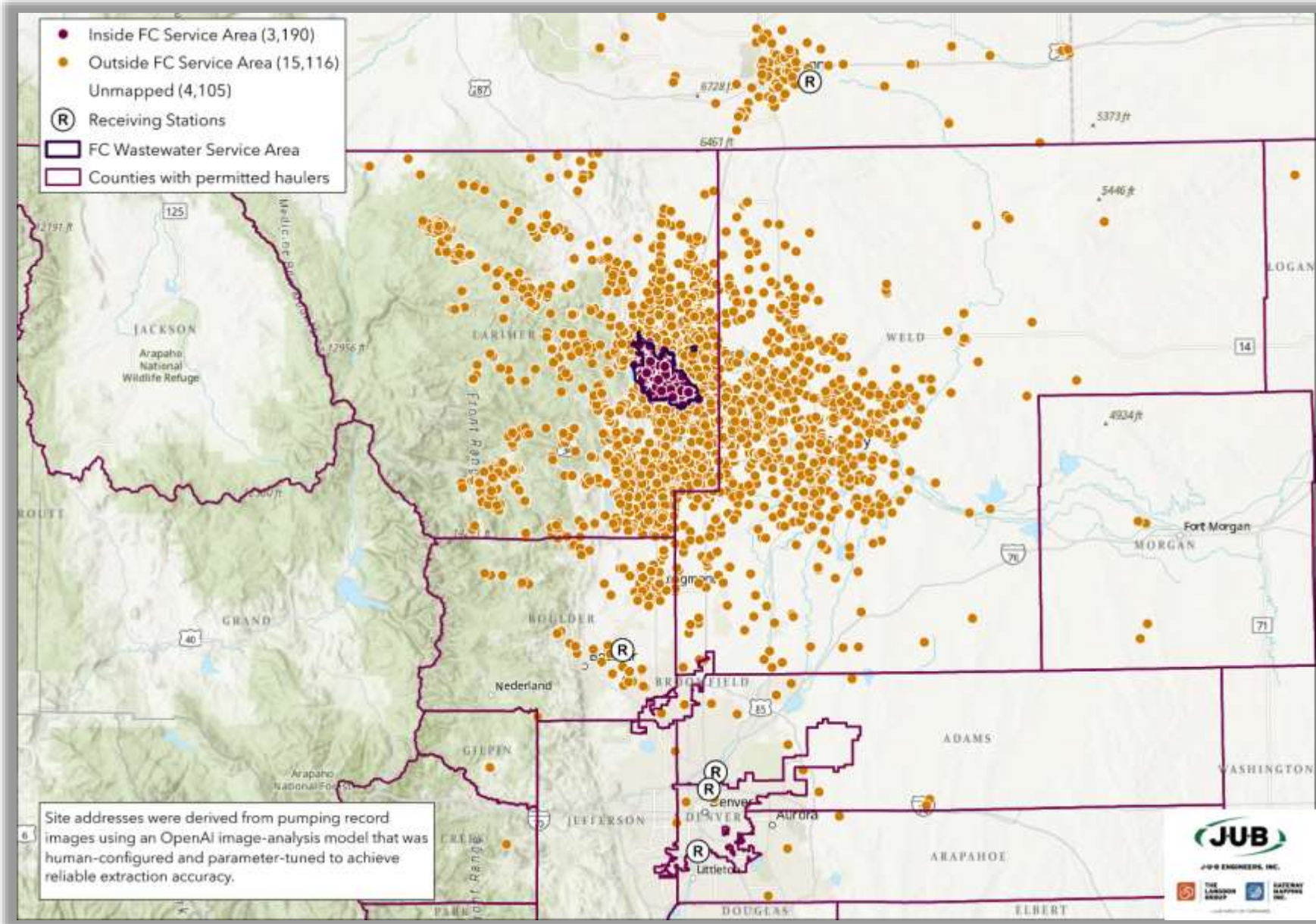
Similar Septage Receiving Station at South Platte Renew in Littleton/Englewood

Septage Receiving Station Capital Project

- Engineer's Opinion of Probable Cost for Construction (2025) = \$2,120,000
- Design work is complete; project is ready to bid for construction
- Construction is scheduled for 2027 (funding dependent)

Item	Budget
Construction (2025 dollars)	\$2,120,000
Consulting Services during Construction	\$250,000
City Project Management and 10% Contingency	\$350,000
Inflation (2025 – 2027)	\$280,000
Total Construction Budget (2027 dollars)	\$3,000,000

Customer Map



- Recovering cost of operations and capital improvement
- 2026 Current Rate - \$0.09 / gal

Capital	\$0.045 / gal
Labor & Operations	\$0.075 / gal
Treatment	\$0.042 / gal
Total	\$0.162 / gal

- Fee structure change from self-reported gallon estimate to truck tank capacity – timing being evaluated

Phased-In Fee Adjustment



Communication Plan

- Letter notification to haulers – March 2026
- Communication following Council adoption – May/June 2026
- Annual meeting for obtaining permit – November 2026

01

Does the Commission support an adjustment to Septage Receiving Fees to recover costs related to the upcoming Septage Receiving Capital Project?

02

Does the Commission support the phased-in approach for fee increases from mid-2026 to 2028?