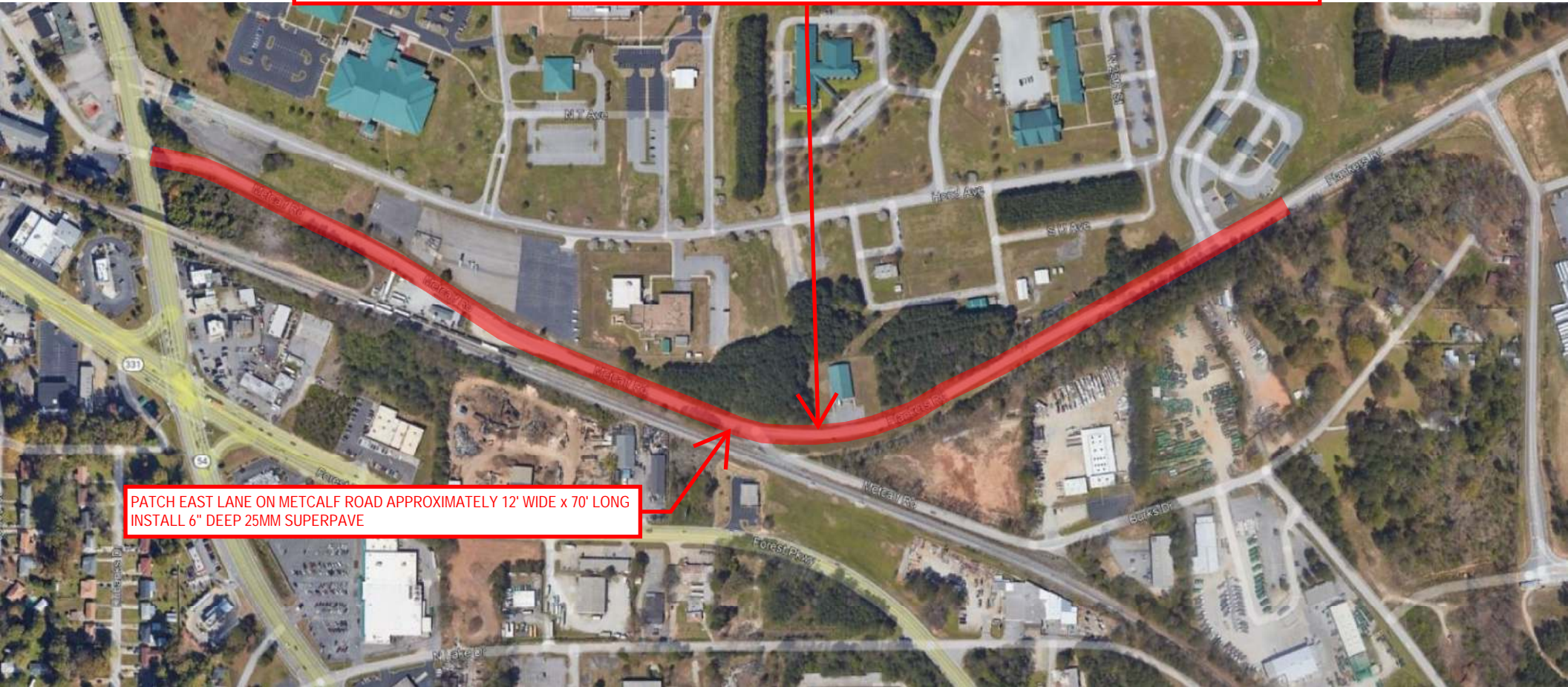


ROADWAY RESURFACING OF METCALF/FLANKERS ROAD
 ROAD LENGTH FROM JONESBORO ROAD TO NEW PAVEMENT ON FLANKERS ROAD: APPROXIMATELY 3,850 LINEAR FEET
 ROAD WIDTH VARIES: APPROXIMATELY 26' WIDE NORMALLY WITH PAVEMENT AS WIDE AS APPROXIMATELY 50' AT THE INTERSECTION WITH FORT GILLEM
 RECOMMENDED MULTIPLE PATCHES ALONG ROAD EDGE - TYPICAL PATCH 6' WIDE x REQUIRED LENGTH; UTILIZE 4" DEEP 25MM SUPERPAVE
 ENTIRE ROAD TO BE EDGE MILLED 6' WIDE x 2" DEEP AT PAVEMENT EDGE TAPERING TO 0"
 OVERLAY ENTIRE ROAD WITH 1" PERMAFLEX ASPHALTIC CONCRETE INTERMEDIATE COURSE
 OVERLAY ENTIRE ROAD WITH 1 1/2" 12.5MM SUPERPAVE ASPHALTIC CONCRETE SURFACE COURSE
 STRIP ROADWAY UTILIZING THERMOPLASTIC COATINGS TO MATCH EXISTING AND ADD DOUBLE YELLOW CENTER LINES AND FOG LINES



PATCH EAST LANE ON METCALF ROAD APPROXIMATELY 12' WIDE x 70' LONG
 INSTALL 6" DEEP 25MM SUPERPAVE

ROADWAY RESURFACING RECOMMENDATIONS METCALF ROAD - FLANKERS ROAD ECONOMIC DEVELOPMENT AUTHORITY - FOREST PARK, GEORGIA



CITY OF
FORESTPARK



*ENGINEERING * LAND PLANNING * SURVEYING *
 *CONSTRUCTION MANAGEMENT * LANDSCAPE ARCHITECTURE*
 WWW.FDC-LLC.COM