



GILLEM LOGISTICS CENTER

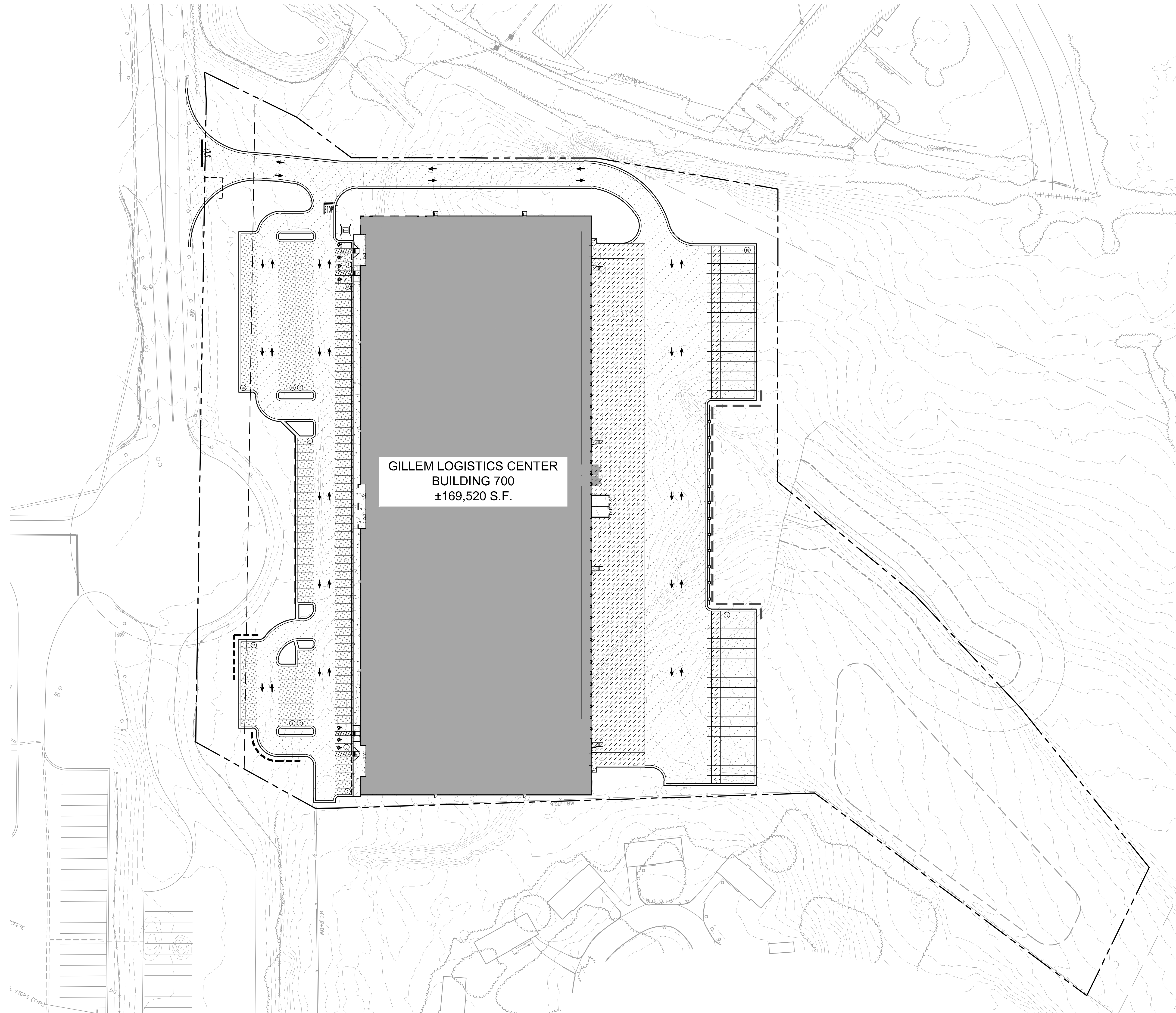
ROBINSON | WEEKS
PARTNERS

**Gillem Logistics Center
Building 700
URA Approval Package**

ROBINSON | WEEKS
PARTNERS



Drawing name: K:\ALP_PR\013556008_gillem_700\CAD\plansheets\C2-00 - SITE PLAN.dwg OVERALL SITE PLAN Dec 07, 2021 10:12am by: Kelli Bate



GILLEM LOGISTICS CENTER
BUILDING 700
±169,520 S.F.

DEVELOPMENT SUMMARY:

SITE SUMMARY	
ZONING	G2 - GILLEM ZONING DISTRICT
PROPOSED USE	WAREHOUSING
BUILDING AREA	169,250 SF
SITE AREA	14.74 ACRES
DISTURBED AREA	12.98 ACRES
PROPOSED IMPERVIOUS	8.97 ACRES
BUILDING SETBACK	
FRONT	55 FT (MAJOR STREET)
SIDE	0 FT
BACK	0 FT
PARKING SUMMARY	
TRAILER PARKING	34 SPACES
EMPLOYEE PARKING	181 SPACES

- SITE NOTES:**
1. THE PROPOSED BUILDING INFORMATION SHOWN HEREON IS FROM AN ELECTRONIC FILE PROVIDED BY RANDALL-PAULSON ARCHITECTS, INC. DATED 07/23/2021 AND IS FOR ILLUSTRATIVE PURPOSES ONLY. CONTRACTOR SHALL REFERENCE ARCHITECTURAL PLANS FOR EXACT BUILDING INFORMATION.
 2. EXISTING CONDITIONS SHOWN HEREON ARE FROM A SURVEY FILE PROVIDED BY VALENTINO & ASSOCIATES, INC., DATED 02/04/2021.
 3. ALL DIMENSIONS ARE FROM FACE OF CURB TO FACE OF CURB UNLESS OTHERWISE NOTED.
 4. SIDEWALK INSTALLED AGAINST BACK OF CURB SHALL BE INSTALLED PER THE PLAN AS MEASURED FROM THE BACK OF CURB.
 5. ALL SIGNAGE AND STRIPING MUST MEET THE LATEST REQUIREMENTS SET FORTH BY MUTCD, GDOT, AND GEORGIA STATE CODE.
 6. REFERENCE LANDSCAPE PLANS FOR ALL HARDSCAPE AND LANDSCAPE DETAILS AND SPECIFICATIONS.

SITE PLAN LEGEND:

	PROPERTY LINE
	25' STREAM BUFFER
	50' STREAM BUFFER
	75' STREAM BUFFER
	BUILDING SETBACK

PAVEMENT LEGEND:

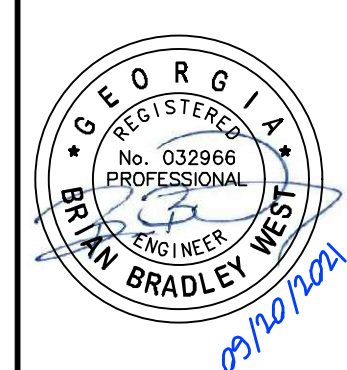
	STANDARD DUTY ASPHALT PAVEMENT
	HEAVY DUTY ASPHALT PAVEMENT
	HEAVY DUTY CONCRETE PAVEMENT
	STANDARD DUTY CONCRETE PAVEMENT

Kimley»Horn
© 2021 KIMLEY-HORN AND ASSOCIATES, INC.
11720 AMBER PARK DRIVE, SUITE 600
ATLANTA, GA 30339
PHONE (770) 619-4282
WWW.KIMLEY-HORN.COM

PREPARED FOR
ROBINSON WEEKS PARTNERS
3350 RIVERWOOD PKWY., SUITE 700
ATLANTA, GA 30339
PHONE (678) 435-5233

No.	ISSUANCE AND REVISION DESCRIPTIONS	DATE	BY

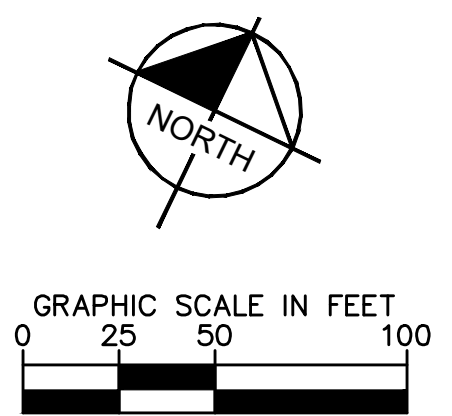
GILLEM 700
2135 ANVIL BLOCK ROAD
FORT GILLEM
FOREST PARK, GA 30294
LAND LOT 205 & 212, 12TH DISTRICT
PARCEL ID: 12178 207001



GSWCC NO. (LEVEL II)	0000062135
DRAWN BY	AZ
DESIGNED BY	DL
REVIEWED BY	BW
DATE	12/06/2021
PROJECT NO.	013556008

TITLE
OVERALL SITE PLAN

SHEET NUMBER
C2-00



This document, together with the concepts and designs presented herein, as an instrument of service, is intended only for the specific purpose and client for which it was prepared. Reuse of and improper reliance on this document without written authorization and adaptation by Kimley-Horn and Associates, Inc. shall be without liability to Kimley-Horn and Associates, Inc.



**RANDALL
PAULSON**
architects

Roswell Mill
85-A Mill Street, Suite 200
Roswell, Georgia 30075
1 770.850.7558 1 770.850.7559
e-mail architects@randallpaulson.com

architecture/interiors

This plan and specification are the property of Randall Paulson Architects. Incorporated in any way, in part or in whole, without the written consent of Randall Paulson Architects, is prohibited. All content has the right of copyright as hereby specifically reserved.

**GILLEM
LOGISTICS
CENTER
BUILDING 700**

at

FORT GILLEM

for

ROBINSON | WEEKS
PARTNERS

CLAYTON COUNTY,
FOREST PARK, GEORGIA 30294

Print Record

20 SEPT 2021	ISSUED FOR PERMIT

Revisions

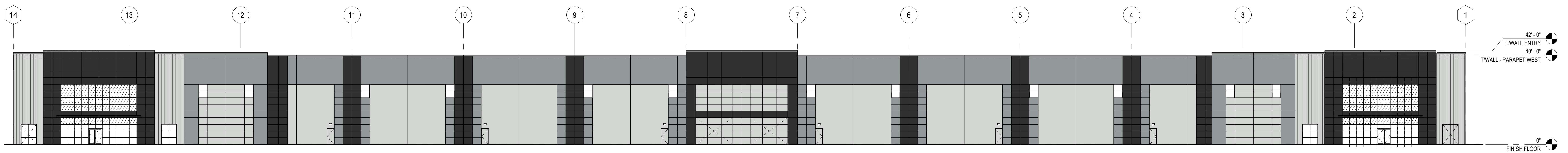
Date: 20 SEPTEMBER 2021 Project No.: 2021240.00

Sheet Title: ELEVATIONS

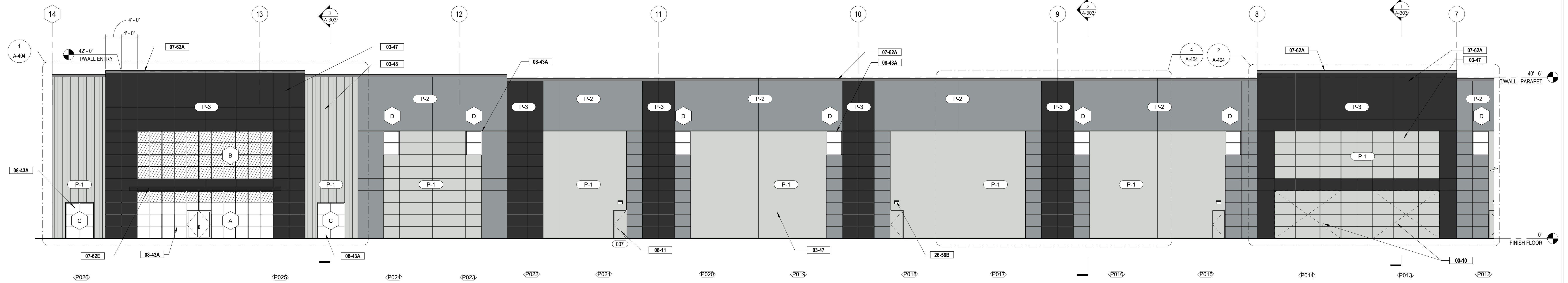
Sheet No.

A-201

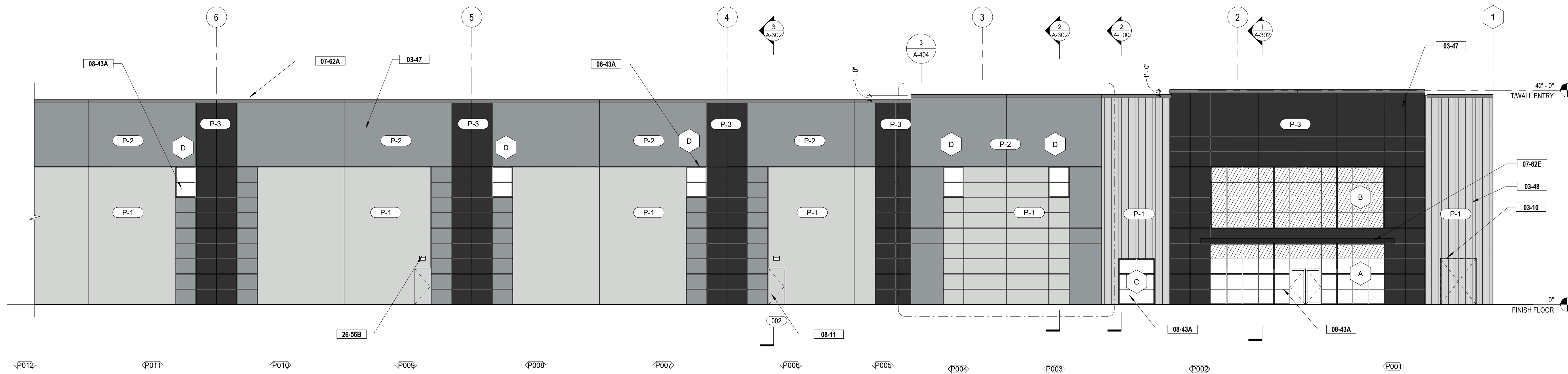
Released for Construction
Not Released for Construction



1 WEST ELEVATION
A-201 1" = 20'-0"



2 WEST ELEVATION 'A'
A-201 3/32" = 1'-0"



3 WEST ELEVATION 'B'
A-201 3/32" = 1'-0"

KEYNOTE LEGEND.

KEY	TEXT
03-10	KNOCKOUT IN CONCRETE TILT PANEL FOR FUTURE OPENING
03-30	6" DUCTLORETE SLAB ON GRADE WITH 6" STONE AGGREGATE BASE. SEE MANUFACTURER'S DETAILS AND DRAWINGS
03-31B	CONCRETE SLAB ON GRADE SEE STRUCTURAL DRAWINGS WITH 10 MIL VAPOR RETARDER
03-31C	CONCRETE RAMP ON GRADE. SEE CIVIL & STRUCTURAL DRAWINGS
03-47	CONCRETE TILT PANEL, INSIDE FACE PAINTED WHITE. SEE STRUCTURAL DRAWINGS
03-48	CONCRETE TILT PANEL WITH FITZGERALD FORMLINER - 14309 FLUTED RIB - 0.75" DEEP, 3" ON CENTER
05-12A	STEEL COLUMNS, PAINTED SAFETY YELLOW FULL HEIGHT. PAINTED SAFETY RED WHERE FIRE EXTINGUISHERS ARE LOCATED. SEE STRUCTURAL DRAWINGS
05-12B	STEEL BRACING. SEE STRUCTURAL DRAWINGS
05-50A	6" O CONCRETE FILLED GALVANIZED STEEL PIPE BOLLARD, TO BE PAINTED SAFETY YELLOW
05-50B	STEEL Z-GUARD, TO BE PAINTED SAFETY YELLOW
05-50C	SHOP MANUFACTURED STEEL ROOF ACCESS LADDER. PAINTED [COLOR]
05-51	GALVANIZED OPEN METAL GRATE STAIR AND LANDING. SEE DETAILS
05-52A	1 1/2" O STEEL PIPE GUARDRAIL, GALVANIZED
05-52B	1 1/4" O STEEL PIPE GUARDRAIL, GALVANIZED
07-24	EIFS - EXTERIOR INSULATION AND FINISH SYSTEM
07-54	45 MIL WHITE TPO MECHANICALLY FASTENED OVER POLYISOCYANURATE (LITR 20.5 MIN.) OVER METAL DECK. SEE STRUCTURAL DRAWINGS
07-62A	PRE-FINISHED METAL COPING, PAC CLAD - CHARCOAL GRAY
07-62B	PRE-FINISHED METAL GUTTER, PAC CLAD - CHARCOAL GRAY
07-62C	PRE-FINISHED METAL DOWNSPOUT, PAC CLAD - CHARCOAL GRAY
07-62E	PRE-FINISHED FLAT METAL FASCIA AND SOFFIT PANEL
08-11	HOLLOW METAL DOOR & FRAME. SEE DOOR SCHEDULE
08-36	OVERHEAD SECTIONAL DOOR WITH 3" HEAVY DUTY TRACK. SEE DOOR SCHEDULE
08-36B	DRIVE-IN OVERHEAD SECTIONAL DOOR WITH 3" HEAVY DUTY TRACK. SEE DOOR SCHEDULE, MOTORIZED
08-43A	BLACK ALUMINUM STOREFRONT SYSTEM WITH 1" INSULATED, TEMPERED, TINTED GLASS. SEE DOOR SCHEDULE
10-73	3-11" DEEP BULLNOSE PREFINISHED METAL DOCK CANOPY, PAC-CLAD - CHARCOAL GRAY
23-37	PREFINISHED METAL WALL LOUVER. SEE MECHANICAL DRAWINGS
26-56A	LED SECURITY WALL PACK - MOUNTED AT 30" O' A.F.F. TO CENTERLINE OF WALL PACK, UNLESS NOTED OTHERWISE. SEE ELECTRICAL DRAWINGS
26-56B	LED PERSONNEL DOOR WALL PACK - MOUNTED AT 9'-0" O' A.F.F. TO CENTERLINE OF WALL PACK, UNLESS NOTED OTHERWISE. SEE ELECTRICAL DRAWINGS

REVEAL LEGEND

TYPE	DESCRIPTION	GRAPHIC
'A'	1 1/2" H X 3/4" D 'V-GROOVE' REVEAL	

NOTE:
UNLESS NOTED OTHERWISE, ALL REVEAL DIMENSIONS ARE TAKEN TO THE CENTERLINE OF THE REVEAL.
SEE ENLARGED ELEVATIONS VIEWS FOR REVEAL ELEVATION
REVEALS TO BE CONTINUED AT EDGES OF PANEL

PAINT LEGEND

TAG	KEY	COLOR	MANUF.	LOCATION
P-1	REFLECTION SW	SW	7661	FIELD
P-2	AFRICAN GRAY	SW	9182	ACCENT
P-3	BLACK MAGIC	SW	6991	ACCENT



**RANDALL
PAULSON**
architects

Roswell Mill
85-A Mill Street, Suite 200
Roswell, Georgia 30075
1778.858.7558 1778.858.7559
e-mail architects@randallpaulson.com

architecture/interiors

This plan and specification are the property of Randall Paulson Architects. Incorporated. These documents may not be copied, reproduced, used or implemented in any way, in part or in whole, without the written consent of Randall Paulson Architects, Incorporated. All content has the right of copyright as hereby specifically reserved.

**GILLEM
LOGISTICS
CENTER
BUILDING 700**

at

FORT GILLEM

for

**ROBINSON | WEEKS
PARTNERS**

CLAYTON COUNTY,
FOREST PARK, GEORGIA 30294

Print Record

20 SEPT 2021	ISSUED FOR PERMIT

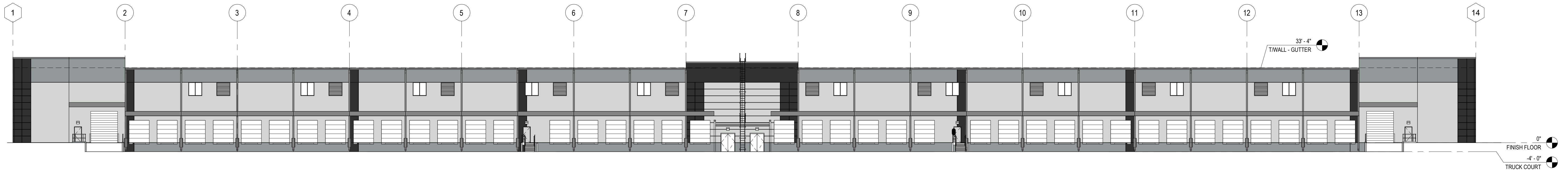
Revisions

Date 20 SEPTEMBER 2021 Project No. 2021240.00

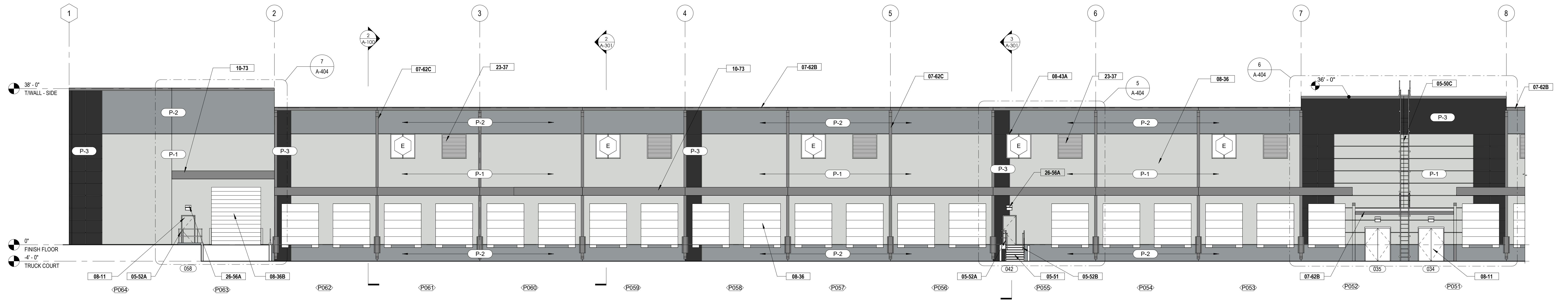
Sheet Title ELEVATIONS

Sheet No. **A-202**

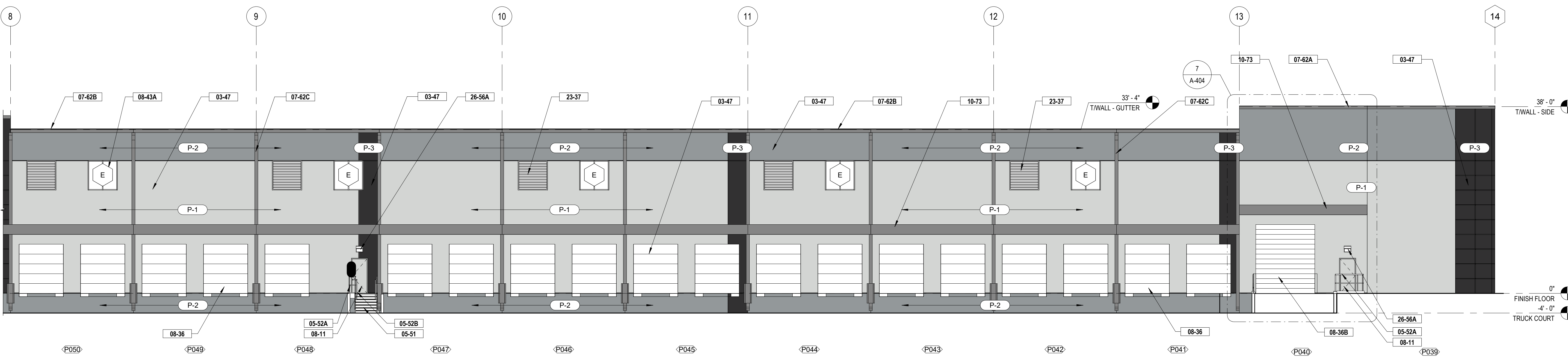
Released for Construction
Not Released for Construction



1 EAST ELEVATION
1" = 20'-0"



2 EAST ELEVATION 'A'
3/32" = 1'-0"



3 EAST ELEVATION 'B'
3/32" = 1'-0"

KEYNOTE LEGEND.

KEY	TEXT
03-10	KNOCKOUT IN CONCRETE TILT PANEL FOR FUTURE OPENING
03-30	6" DUCTLORETE SLAB ON GRADE WITH 6" STONE AGGREGATE BASE. SEE MANUFACTURER'S DETAILS AND DRAWINGS
03-31B	CONCRETE SLAB ON GRADE SEE STRUCTURAL DRAWINGS WITH 10 mil VAPOR RETARDER
03-31C	CONCRETE RAMP-ON-GRADE. SEE CIVIL & STRUCTURAL DRAWINGS
03-47	CONCRETE TILT PANEL, INSIDE FACE PAINTED WHITE. SEE STRUCTURAL DRAWINGS
03-48	CONCRETE TILT PANEL WITH FITZGERALD FORMLINER - 14309 FLUTED RIB - 0.75" DEEP, 3" ON CENTER
05-12A	STEEL COLUMNS, PAINTED SAFETY YELLOW FULL HEIGHT, PAINTED SAFETY RED WHERE FIRE EXTINGUISHERS ARE LOCATED. SEE STRUCTURAL DRAWINGS
05-12B	STEEL BRACING. SEE STRUCTURAL DRAWINGS
05-50A	6" Ø CONCRETE FILLED GALVANIZED STEEL PIPE BOLLARD, TO BE PAINTED SAFETY YELLOW
05-50B	STEEL Z-GUARD, TO BE PAINTED SAFETY YELLOW
05-50C	SHIP MANUFACTURED STEEL ROOF ACCESS LADDER, PAINTED [COLOR]
05-51	GALVANIZED OPEN METAL GRATE STAIR AND LANDING, SEE DETAILS
05-52A	1 1/2" Ø STEEL PIPE GUARDRAIL, GALVANIZED
05-52B	1 1/4" Ø STEEL PIPE GUARDRAIL, GALVANIZED
07-24	EIPS - EXTERIOR INSULATION AND FINISH SYSTEM
07-54	45 mil WHITE TPO MECHANICALLY FASTENED OVER POLYISOCYANURATE (LITR-20.5 MIN.) OVER METAL DECK. SEE STRUCTURAL DRAWINGS
07-62A	PRE-FINISHED METAL COPING, PAC CLAD - CHARCOAL GRAY
07-62B	PRE-FINISHED METAL GUTTER, PAC CLAD - CHARCOAL GRAY
07-62C	PRE-FINISHED METAL DOWNSPOUT, PAC CLAD - CHARCOAL GRAY
07-62E	PRE-FINISHED FLAT METAL FASCIA AND SOFFIT PANEL
08-11	HOLLOW METAL DOOR & FRAME. SEE DOOR SCHEDULE
08-36	OVERHEAD SECTIONAL DOOR WITH 3" HEAVY DUTY TRACK. SEE DOOR SCHEDULE
08-36B	DRIVE-IN OVERHEAD SECTIONAL DOOR WITH 3" HEAVY DUTY TRACK. SEE DOOR SCHEDULE, MOTORIZED
08-43A	BLACK ALUMINUM STOREFRONT SYSTEM WITH 1" INSULATED, TEMPERED, TINTED GLASS. SEE DOOR SCHEDULE
10-73	3'-11" DEEP BULLNOSE PREFINISHED METAL DOCK CANOPY, PAC-CLAD - CHARCOAL GRAY
23-37	PREFINISHED METAL WALL LOUVER. SEE MECHANICAL DRAWINGS
26-56A	LED SECURITY WALL PACK - MOUNTED AT 30" OF A.F.F. TO CENTERLINE OF WALL PACK, UNLESS NOTED OTHERWISE. SEE ELECTRICAL DRAWINGS
26-56B	LED PERSONNEL DOOR WALL PACK - MOUNTED AT 9'-0" A.F.F. TO CENTERLINE OF WALL PACK, UNLESS NOTED OTHERWISE. SEE ELECTRICAL DRAWINGS

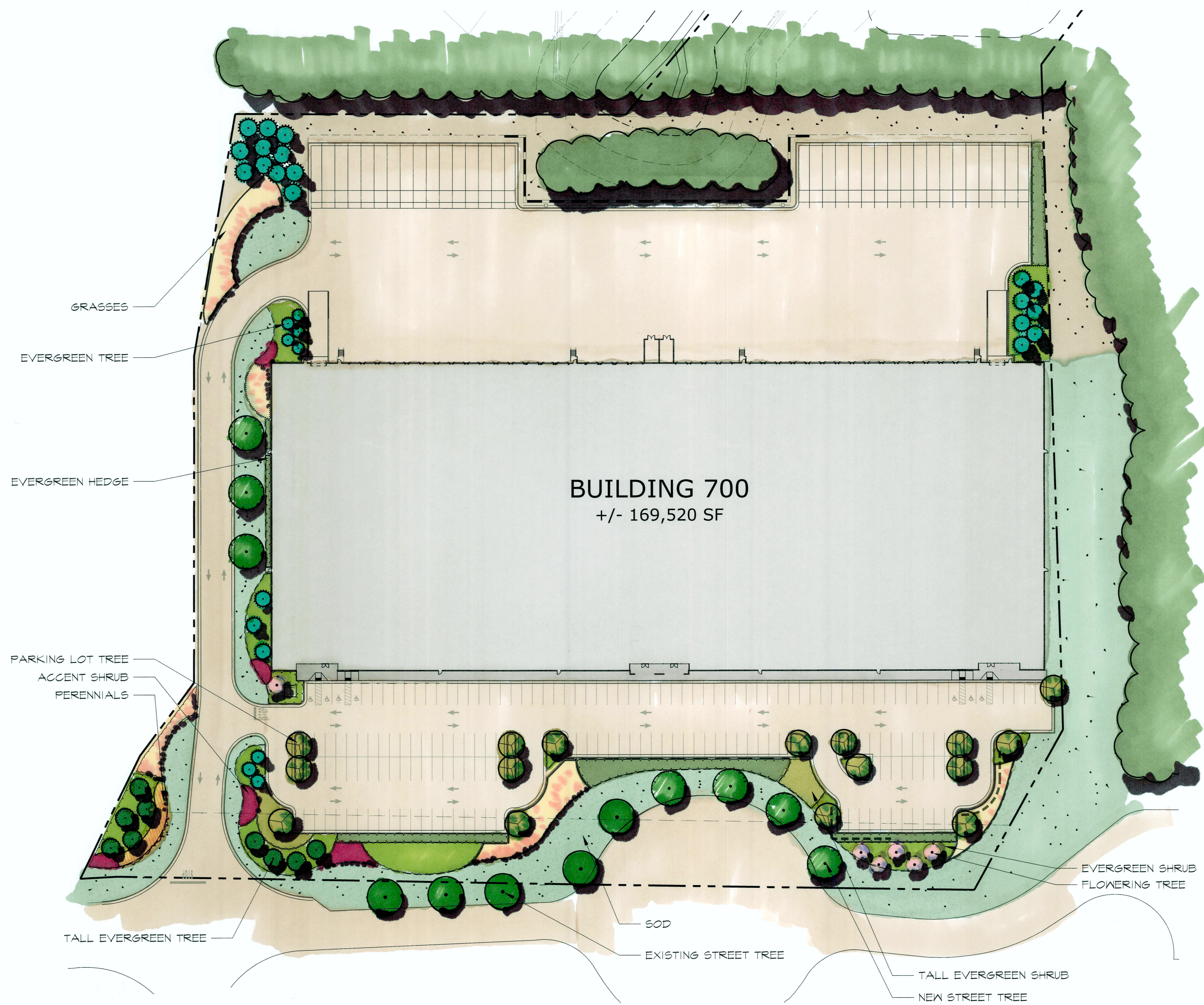
REVEAL LEGEND

TYPE	DESCRIPTION	GRAPHIC
'A'	1 1/2" X 3/4" V-GROOVE REVEAL	

NOTE: UNLESS NOTED OTHERWISE, ALL REVEAL DIMENSIONS ARE TAKEN TO THE CENTERLINE OF THE REVEAL.
SEE ENLARGED ELEVATIONS VIEWS FOR REVEAL ELEVATION
REVEALS TO BE CONTINUED AT EDGES OF PANEL

PAINT LEGEND

TAG	KEY	COLOR	MANUF.	LOCATION
P-1	REFLECTION SW	7661	SW	FIELD
P-2	AFRICAN GRAY	SW 9162	SW	ACCENT
P-3	BLACK MAGIC	SW 8991	SW	ACCENT



TREE LEGEND

- EXISTING STREET TREE
- PROPOSED STREET TREE
- PARKING LOT TREE
- TALL EVERGREEN TREE
- EVERGREEN TREE
- FLOWERING TREE
- EVERGREEN HEDGE
- NEEDLEPOINT HOLLY
- GRASSES
- SQUAW SWITCH GRASS
- DWARF MUHLY GRASS
- ACCENT SHRUB
- LIMELIGHT HYDRANGEA
- KNOCKOUT ROSE
- TALL EVERGREEN SHRUB
- RUBY LOROPETALUM
- EVERGREEN SHRUB
- CARISSA HOLLY
- DWARF YAUPON HOLLY
- PURPLE DIAMOND LOROPETALUM
- PERENNIAL
- STELLA D ORO DAYLILY
- SOD