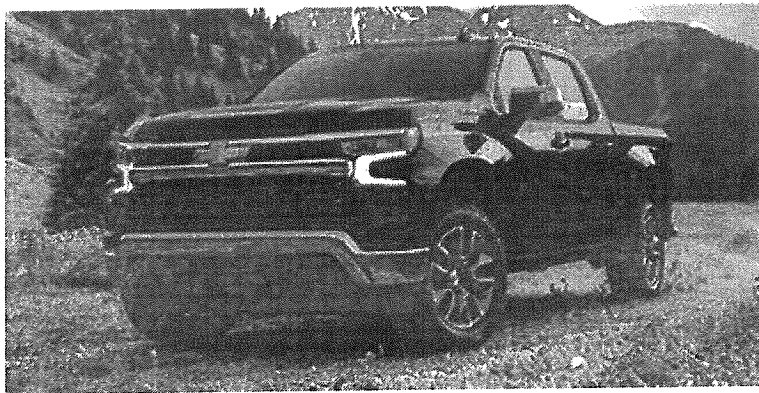




## Hardy Chevrolet Buick GMC Inc

Desmond Delesline | 6787803034 | [ddelesline@hardyautomotive.com](mailto:ddelesline@hardyautomotive.com)

Vehicle: [Fleet] 2025 Chevrolet Silverado 1500 (CK10543) 4WD Crew Cab 147" Work Truck





# Hardy Chevrolet Buick GMC Inc

Desmond Delesline | 6787803034 | ddelesline@hardyautomotive.com

Vehicle: [Fleet] 2025 Chevrolet Silverado 1500 (CK10543) 4WD Crew Cab 147" Work Truck (  Complete )

## Quote Worksheet

|                                      | MSRP                |
|--------------------------------------|---------------------|
| Base Price                           | \$46,000.00         |
| Dest Charge                          | \$1,995.00          |
| Total Options                        | \$4,295.00          |
| <b>Subtotal</b>                      | <b>\$52,290.00</b>  |
| FLEET ADJUSTMENT                     | (\$4,000.00)        |
| DELIVERY                             | \$150.00            |
| <b>Subtotal Pre-Tax Adjustments</b>  | <b>(\$3,850.00)</b> |
| Less Customer Discount               | \$0.00              |
| <b>Subtotal Discount</b>             | <b>\$0.00</b>       |
| Trade-In                             | \$0.00              |
| <b>Subtotal Trade-In</b>             | <b>\$0.00</b>       |
| <b>Taxable Price</b>                 | <b>\$48,440.00</b>  |
| Sales Tax                            | \$0.00              |
| <b>Subtotal Taxes</b>                | <b>\$0.00</b>       |
| <b>Subtotal Post-Tax Adjustments</b> | <b>\$0.00</b>       |
| <b>Total Sales Price</b>             | <b>\$48,440.00</b>  |

\_\_\_\_\_  
Dealer Signature / Date

\_\_\_\_\_  
Customer Signature / Date

This document contains information considered Confidential between GM and its Clients uniquely. The information provided is not intended for public disclosure. Prices, specifications, and availability are subject to change without notice, and do not include certain fees, taxes and charges that may be required by law or vary by manufacturer or region. Performance figures are guidelines only, and actual performance may vary. Photos may not represent actual vehicles or exact configurations. Content based on report preparer's input is subject to the accuracy of the input provided.

Data Version: 23892. Data Updated: Nov 7, 2024 6:45:00 PM PST.



# Hardy Chevrolet Buick GMC Inc

Desmond Delesline | 6787803034 | ddelesline@hardyautomotive.com

Vehicle: [Fleet] 2025 Chevrolet Silverado 1500 (CK10543) 4WD Crew Cab 147" Work Truck (✔ Complete)

## Selected Model and Options

### MODEL

| CODE    | MODEL  |
|---------|--|
| CK10543 | 2025 Chevrolet Silverado 1500 4WD Crew Cab 147" Work Truck |

### COLORS

| CODE | DESCRIPTION            |
|------|------------------------|
| GXD  | Sterling Gray Metallic |

### EMISSIONS

| CODE | DESCRIPTION                     | FRONT WEIGHT | REAR WEIGHT |
|------|---------------------------------|--------------|-------------|
| FE9  | Emissions, Federal requirements | 0.00 lbs     | 0.00 lbs    |

### ENGINE

| CODE | DESCRIPTION   | FRONT WEIGHT | REAR WEIGHT |
|------|---|--------------|-------------|
| L84  | Engine, 5.3L EcoTec3 V8 (355 hp [265 kW] @ 5600 rpm, 383 lb-ft of torque [518 Nm] @ 4100 rpm); featuring available Dynamic Fuel Management that enables the engine to operate in 17 different patterns between 2 and 8 cylinders, depending on demand, to optimize power delivery and efficiency (Not available with C*10703 Regular Cab model. Retail orders require (G80) auto-locking differential. Fleet or Government order types require (G80) auto-locking differential on CC10543 Crew Cab models.) | 0.00 lbs     | 0.00 lbs    |

### TRANSMISSION

| CODE | DESCRIPTION   | FRONT WEIGHT | REAR WEIGHT |
|------|---|--------------|-------------|
| MHT  | Transmission, 10-speed automatic, electronically controlled with overdrive and tow/haul mode. Includes Cruise Grade Braking and Powertrain Grade Braking (Included and only available with (L84) 5.3L EcoTec3 V8 engine.) | 0.00 lbs     | 0.00 lbs    |

### GVWR

| CODE | DESCRIPTION  | FRONT WEIGHT | REAR WEIGHT |
|------|--|--------------|-------------|
| C5Y  | GVWR, 7100 lbs. (3221 kg) (Requires Crew Cab 4WD model with (L84) 5.3L EcoTec3 V8 engine.) | 0.00 lbs     | 0.00 lbs    |

This document contains information considered Confidential between GM and its Clients uniquely. The information provided is not intended for public disclosure. Prices, specifications, and availability are subject to change without notice, and do not include certain fees, taxes and charges that may be required by law or vary by manufacturer or region. Performance figures are guidelines only, and actual performance may vary. Photos may not represent actual vehicles or exact configurations. Content based on report preparer's input is subject to the accuracy of the input provided.

Data Version: 23892. Data Updated: Nov 7, 2024 6:45:00 PM PST.



# Hardy Chevrolet Buick GMC Inc

Desmond Delesline | 6787803034 | ddelesline@hardyautomotive.com

Vehicle: [Fleet] 2025 Chevrolet Silverado 1500 (CK10543) 4WD Crew Cab 147" Work Truck (  Complete )

| AXLE |  |              |             |
|------|--|--------------|-------------|
| CODE | DESCRIPTION  | FRONT WEIGHT | REAR WEIGHT |
| GU5  | Rear axle, 3.23 ratio (Included and only available with (L84) 5.3L EcoTec3 V8 engine.) | 0.00 lbs     | 0.00 lbs    |

| PREFERRED EQUIPMENT GROUP |  |              |             |
|---------------------------|--|--------------|-------------|
| CODE                      | DESCRIPTION  | FRONT WEIGHT | REAR WEIGHT |
| 1WT                       | Work Truck Preferred Equipment Group includes standard equipment | 0.00 lbs     | 0.00 lbs    |

| WHEELS |  |              |             |
|--------|--|--------------|-------------|
| CODE   | DESCRIPTION  | FRONT WEIGHT | REAR WEIGHT |
| RCV    | Wheels, 18" x 8.5" (45.7 cm x 21.6 cm) Bright Silver painted aluminum (Requires Crew Cab or Double Cab model, (L84) 5.3L EcoTec3 V8 engine, (Z71) Z71 Off-Road Package and (R3O) LT275/65R18 Goodyear Wrangler Territory tires.) | 0.00 lbs     | 0.00 lbs    |

| TIRES |   |              |             |
|-------|---|--------------|-------------|
| CODE  | DESCRIPTION   | FRONT WEIGHT | REAR WEIGHT |
| R3O   | Tires, LT275/65R18C blackwall Goodyear Wrangler Territory MT (Requires Crew Cab or Double Cab, (L84) 5.3L EcoTec3 V8 engine, (Z71) Z71 Off-Road Package and (RCV) 18" Bright Silver painted aluminum wheels.) | 0.00 lbs     | 0.00 lbs    |

| SPARE TIRE |   |              |             |
|------------|---|--------------|-------------|
| CODE       | DESCRIPTION   | FRONT WEIGHT | REAR WEIGHT |
| XCQ        | Tire, spare 265/70R17SL all-season, blackwall (Included and only available with (QDV) 265/70R17 all-terrain blackwall tires or all 18" wheels and tires.) | 0.00 lbs     | 0.00 lbs    |

| PAINT |                        |              |             |
|-------|------------------------|--------------|-------------|
| CODE  | DESCRIPTION            | FRONT WEIGHT | REAR WEIGHT |
| GXD   | Sterling Gray Metallic | 0.00 lbs     | 0.00 lbs    |

| SEAT TYPE |  |              |             |
|-----------|--|--------------|-------------|
| CODE      | DESCRIPTION  | FRONT WEIGHT | REAR WEIGHT |
| AZ3       | Seats, front 40/20/40 split-bench with covered armrest storage and under-seat storage (lockable) (STD) | 0.00 lbs     | 0.00 lbs    |

This document contains information considered Confidential between GM and its Clients uniquely. The information provided is not intended for public disclosure. Prices, specifications, and availability are subject to change without notice, and do not include certain fees, taxes and charges that may be required by law or vary by manufacturer or region. Performance figures are guidelines only, and actual performance may vary. Photos may not represent actual vehicles or exact configurations. Content based on report preparer's input is subject to the accuracy of the input provided.  
 Data Version: 23892. Data Updated: Nov 7, 2024 6:45:00 PM PST.



# Hardy Chevrolet Buick GMC Inc

Desmond Delesline | 6787803034 | ddelesline@hardyautomotive.com

Vehicle: [Fleet] 2025 Chevrolet Silverado 1500 (CK10543) 4WD Crew Cab 147" Work Truck (  Complete )

## SEAT TRIM

| CODE | DESCRIPTION                | FRONT WEIGHT | REAR WEIGHT |
|------|----------------------------|--------------|-------------|
| H2G  | Jet Black, Vinyl seat trim | 0.00 lbs     | 0.00 lbs    |

## RADIO

| CODE | DESCRIPTION   | FRONT WEIGHT | REAR WEIGHT |
|------|---|--------------|-------------|
| IOR  | Audio system, Chevrolet Infotainment 3 system 7" diagonal HD color touchscreen, AM/FM stereo, Bluetooth audio streaming for 2 active devices, voice command pass-through to phone, Wireless Apple CarPlay and Wireless Android Auto compatibility (STD) | 0.00 lbs     | 0.00 lbs    |

## OPTION DISCOUNT

| CODE | DESCRIPTION  | FRONT WEIGHT | REAR WEIGHT |
|------|--|--------------|-------------|
| —    | Option/package discount (Requires (L3B) TurboMax engine or (PEB) WT Value Package.) *DISCOUNT* | 0.00 lbs     | 0.00 lbs    |

## ADDITIONAL EQUIPMENT - PACKAGE

| CODE | DESCRIPTION   | FRONT WEIGHT | REAR WEIGHT |
|------|---|--------------|-------------|
| PCV  | WT Convenience Package includes (AKO) tinted windows, (C49) rear-window defogger and (DLF) power mirrors (Upgradeable to (DPO) trailer mirrors and includes (DD8) auto dimming rearview mirror.)  | 0.00 lbs     | 0.00 lbs    |
| REB  | WT Value Package includes (PCV) WT Convenience Package and (Z82) Trailing Package (Not available with (ZW9) pickup bed delete.) *GROSS*   | 0.00 lbs     | 0.00 lbs    |
| Z71  | Z71 Off-Road Package includes (Z71) Off-Road suspension, (JHD) Hill Descent Control, (NZZ) skid plates and (K47) heavy-duty air filter (Requires Crew Cab or Double Cab 4WD model, (L84) 5.3L EcoTec3 V8 engine and AT or MT tires. Includes Z71 hard badge, (G80) locking differential and (NQH) 2-speed transfer case. Not available with (L3B) TurboMax engine.) | 0.00 lbs     | 0.00 lbs    |
| Z82  | Trailing Package includes trailer hitch, 7-pin and 4-pin connectors and (CTT) Hitch Guidance (With (L84) 5.3L EcoTec3 V8 engine requires (G80) locking differential. Included with (PEB) WT Value Package.)   | 0.00 lbs     | 0.00 lbs    |

This document contains information considered Confidential between GM and its Clients uniquely. The information provided is not intended for public disclosure. Prices, specifications, and availability are subject to change without notice, and do not include certain fees, taxes and charges that may be required by law or vary by manufacturer or region. Performance figures are guidelines only, and actual performance may vary. Photos may not represent actual vehicles or exact configurations. Content based on report preparer's input is subject to the accuracy of the input provided.

Data Version: 23892. Data Updated: Nov 7, 2024 6:45:00 PM PST.



# Hardy Chevrolet Buick GMC Inc

Desmond Delesline | 6787803034 | ddelesline@hardyautomotive.com

Vehicle: [Fleet] 2025 Chevrolet Silverado 1500 (CK10543) 4WD Crew Cab 147" Work Truck (  Complete )

## ADDITIONAL EQUIPMENT - MECHANICAL

| CODE | DESCRIPTION  | FRONT WEIGHT | REAR WEIGHT |
|------|--|--------------|-------------|
| G80  | Auto-locking rear differential (Required with (L84) 5.3L EcoTec3 V8 engine when (Z82) Trailering Package is ordered. Included with (Z71) Z71 Off-Road Package or (9C1) Police Pursuit Package.)  | 0.00 lbs     | 0.00 lbs    |
| JHD  | Hill Descent Control (Included and only available with (Z71) Z71 Off-Road Package or (9C1) Police Pursuit Package.)  | 0.00 lbs     | 0.00 lbs    |
| K47  | Air filter, heavy-duty (Included and only available with (BAQ) Work Truck Package, (Z71) Z71 Off-Road Package, (VYU) Snow Plow Prep Package, (5W4) Special Service Package or (9C1) Police Pursuit Package. Available free flow as a SEO.) | 0.00 lbs     | 0.00 lbs    |
| KC4  | Cooling, external engine oil cooler (Included and only available with V8 engines.)   | 0.00 lbs     | 0.00 lbs    |
| KNP  | Cooling, auxiliary external transmission oil cooler (Included and only available with V8 engines.)   | 0.00 lbs     | 0.00 lbs    |
| KW7  | Alternator, 170 amps (Included and only available with (L84) 5.3L EcoTec3 V8 engine. Not available with (L3B) TurboMax engine or (VYU) Snow Plow Prep Package.)  | 0.00 lbs     | 0.00 lbs    |
| NQH  | Transfer case, two-speed electronic Autotrac with push button control (4WD models only) (Included and only available with (Z71) Z71 Off-Road Package or (9C1) Police Pursuit Package. Free flow requires Regular Cab model.)               | 0.00 lbs     | 0.00 lbs    |
| NZZ  | Skid Plates (Included and only available with (BAQ) Work Truck Package, (Z71) Z71 Off-Road Package, (VYU) Snow Plow Prep Package or (9C1) Police Pursuit Package. Available free flow with Fleet or Government order type.)                | 0.00 lbs     | 0.00 lbs    |

## ADDITIONAL EQUIPMENT - EXTERIOR

| CODE | DESCRIPTION   | FRONT WEIGHT | REAR WEIGHT |
|------|---|--------------|-------------|
| AKO  | Glass, deep-tinted (Included with (PCV) WT Convenience Package.)  | 0.00 lbs     | 0.00 lbs    |
| DLF  | Mirrors, outside heated power-adjustable (Standard on Regular Cab models. Included and only available with (PCV) WT Convenience Package on Crew Cab and Double Cab models. When (PQA) WT Safety Package is ordered, includes (DP6) high gloss Black mirror caps.) | 0.00 lbs     | 0.00 lbs    |
| QT5  | Tailgate, gate function manual with EZ Lift includes power lock and release   | 0.00 lbs     | 0.00 lbs    |

## ADDITIONAL EQUIPMENT - INTERIOR

| CODE | DESCRIPTION  | FRONT WEIGHT | REAR WEIGHT |
|------|--|--------------|-------------|
| C49  | Defogger, rear-window electric (Included with (PCV) WT Convenience Package.) | 0.00 lbs     | 0.00 lbs    |

This document contains information considered Confidential between GM and its Clients uniquely. The information provided is not intended for public disclosure. Prices, specifications, and availability are subject to change without notice, and do not include certain fees, taxes and charges that may be required by law or vary by manufacturer or region. Performance figures are guidelines only, and actual performance may vary. Photos may not represent actual vehicles or exact configurations. Content based on report preparer's input is subject to the accuracy of the input provided.

Data Version: 23892. Data Updated: Nov 7, 2024 6:45:00 PM PST.



# Hardy Chevrolet Buick GMC Inc

Desmond Delesline | 6787803034 | ddelesline@hardyautomotive.com

Vehicle: [Fleet] 2025 Chevrolet Silverado 1500 (CK10543) 4WD Crew Cab 147" Work Truck (  Complete )

## ADDITIONAL EQUIPMENT - SAFETY-INTERIOR

| CODE                 | DESCRIPTION   | FRONT WEIGHT    | REAR WEIGHT     |
|----------------------|---|-----------------|-----------------|
| ÇTT                  | Hitch Guidance dynamic single line to aid in trailer alignment for hitching<br>(Included and only available with (Z82) Trailering Package.) | 0.00 lbs        | 0.00 lbs        |
| <b>Options Total</b> |   | <b>0.00 lbs</b> | <b>0.00 lbs</b> |

This document contains information considered Confidential between GM and its Clients uniquely. The information provided is not intended for public disclosure. Prices, specifications, and availability are subject to change without notice, and do not include certain fees, taxes and charges that may be required by law or vary by manufacturer or region. Performance figures are guidelines only, and actual performance may vary. Photos may not represent actual vehicles or exact configurations. Content based on report preparer's input is subject to the accuracy of the input provided.  
 Data Version: 23892. Data Updated: Nov 7, 2024 6:45:00 PM PST.



# Hardy Chevrolet Buick GMC Inc

Desmond Delesline | 6787803034 | ddelesline@hardyautomotive.com

Vehicle: [Fleet] 2025 Chevrolet Silverado 1500 (CK10543) 4WD Crew Cab 147" Work Truck (✓ Complete)

## Standard Equipment

### Package

Chevy Safety Assist includes (UHY) Automatic Emergency Braking, (UKJ) Front Pedestrian Braking, (UHX) Lane Keep Assist with Lane Departure Warning, (UE4) Following Distance Indicator, (UEU) Forward Collision Alert and (TQ5) IntelliBeam

### Mechanical

Durabed, pickup bed

Engine, TurboMax (310 hp [231 kW] @ 5600 rpm, 430 lb-ft of torque [583 Nm] @ 3000 rpm) (STD) (Not available with (Z71) Z71 Off-Road Package, (VYU) Snow Plow Prep Package or (ZW9) pickup bed delete.)

Transmission, 8-speed automatic, electronically controlled with overdrive and tow/haul mode. Includes Cruise Grade Braking and Powertrain Grade Braking (STD) (Included and only available with (L3B) TurboMax engine. Requires (AZ3) front 40/20/40 split-bench seats.)

Rear axle, 3.42 ratio

GVWR, 7000 lbs. (3175 kg) (STD) (Requires Crew Cab or Double Cab 4WD model and (L3B) TurboMax engine.)

Push Button Start

Automatic Stop/Start (Not available with (5W4) Special Services Package, (9C1) Police Pursuit Package or (FHS) E85 FlexFuel capability.)

Transfer case, single speed electronic Autotrac with push button control (4WD models only)

Four wheel drive

Battery, heavy-duty 730 cold-cranking amps/80 Amp-hr, maintenance-free with rundown protection and retained accessory power

Alternator, 220 amps (Included with (L3B) TurboMax engine, (VYU) Snow Plow Prep Package, (5W4) Special Service Package or (9C1) Police Pursuit Package.)

Recovery hooks, front, frame-mounted, Black

Frame, fully-boxed, hydroformed front section

Suspension Package, Standard

Steering, Electric Power Steering (EPS) assist, rack-and-pinion

Brakes, 4-wheel antilock, 4-wheel disc with DURALIFE rotors

Brake lining wear indicator

Capless Fuel Fill

Exhaust, single outlet

### Exterior

Wheels, 17" x 8" (43.2 cm x 20.3 cm) Ultra Silver painted steel (STD)

This document contains information considered Confidential between GM and its Clients uniquely. The information provided is not intended for public disclosure. Prices, specifications, and availability are subject to change without notice, and do not include certain fees, taxes and charges that may be required by law or vary by manufacturer or region. Performance figures are guidelines only, and actual performance may vary. Photos may not represent actual vehicles or exact configurations. Content based on report preparer's input is subject to the accuracy of the input provided.

Data Version: 23892. Data Updated: Nov 7, 2024 6:45:00 PM PST.





# Hardy Chevrolet Buick GMC Inc

Desmond Delesline | 6787803034 | ddelesline@hardyautomotive.com

Vehicle: [Fleet] 2025 Chevrolet Silverado 1500 (CK10543) 4WD Crew Cab 147" Work Truck (✓ Complete)

## Exterior

- Tires, 255/70R17 all-season, blackwall (STD)
- Tire, spare 255/70R17 all-season, blackwall (STD) (Included with (QBN) 255/70R17 all-season, blackwall tires.)
- Wheel, 17" x 8" (43.2 cm x 20.3 cm) full-size, steel spare
- Tire carrier lock, keyed cylinder lock that utilizes same key as ignition and door
- Bumpers, front, Black (semi-gloss)
- Bumpers, rear, Black (semi-gloss)
- CornerStep, rear bumper
- Cargo tie downs (12), fixed rated at 500 lbs per corner
- Headlamps, halogen reflector with halogen Daytime Running Lamps
- IntelliBeam, automatic high beam on/off
- Lamps, cargo area, cab mounted integrated with center high mount stop lamp, with switch in bank on left side of steering wheel (incandescent on Regular Cab models, LED on Crew Cab and Double Cab models)
- Taillamps with incandescent tail, stop and reverse lights
- Mirrors, outside manual, Black (Standard on Crew Cab and Double Cab models only. Not available on Regular Cab models.)
- Glass, solar absorbing, tinted
- Door handles, Black
- Tailgate and bed rail protection cap, top
- Tailgate, standard
- Tailgate, locking utilizes same key as ignition and door (Removed when (QT5) EZ Lift power lock and release tailgate is ordered.)
- Tailgate, gate function manual, no EZ Lift

## Entertainment

- Audio system, Chevrolet Infotainment 3 system 7" diagonal HD color touchscreen, AM/FM stereo, Bluetooth audio streaming for 2 active devices, voice command pass-through to phone, Wireless Apple CarPlay and Wireless Android Auto compatibility (STD)
- Sirius XM, delete (Can be upgraded to (U2K) SiriusXM.)
- Audio system feature, 6-speaker system (Requires Crew Cab or Double Cab model.)
- Wireless phone projection for Apple CarPlay and Android Auto
- Bluetooth for phone, connectivity to vehicle infotainment system
- Wi-Fi Hotspot capable (Terms and limitations apply. See onstar.com or dealer for details.)

This document contains information considered Confidential between GM and its Clients uniquely. The information provided is not intended for public disclosure. Prices, specifications, and availability are subject to change without notice, and do not include certain fees, taxes and charges that may be required by law or vary by manufacturer or region. Performance figures are guidelines only, and actual performance may vary. Photos may not represent actual vehicles or exact configurations. Content based on report preparer's input is subject to the accuracy of the input provided.

Data Version: 23892. Data Updated: Nov 7, 2024 6:45:00 PM PST.



# Hardy Chevrolet Buick GMC Inc

Desmond Delesline | 6787803034 | ddelesline@hardyautomotive.com

Vehicle: [Fleet] 2025 Chevrolet Silverado 1500 (CK10543) 4WD Crew Cab 147" Work Truck (✔ Complete)

## Interior

- Seats, front 40/20/40 split-bench with covered armrest storage and under-seat storage (lockable) (STD)
- Seat trim, Vinyl
- Seat adjuster, driver 4-way manual
- Seat adjuster, passenger 4-way manual
- Seat, rear 60/40 folding bench (folds up), 3-passenger (includes child seat top tether anchor) (Requires Crew Cab or Double Cab model.)
- Floor covering rubberized-vinyl (Not available with LPO floor liners.)
- Steering wheel, urethane
- Steering column, Tilt-Wheel, manual with wheel locking security feature
- Steering column lock, electrical
- Instrument cluster, 6-gauge cluster featuring speedometer, fuel level, engine temperature, tachometer, voltage and oil pressure
- Driver Information Center, 3.5" diagonal monochromatic display
- Exterior Temperature Display located in radio display
- Compass located in instrument cluster
- Window, power front, drivers express up/down
- Window, power front, passenger express down
- Windows, power rear, express down (Not available with Regular Cab models.)
- Door locks, power
- Remote Keyless Entry, with 2 transmitters
- Cruise control, electronic with set and resume speed, steering wheel-mounted
- Power outlet, front auxiliary, 12-volt
- USB Ports, 2, Charge/Data ports located on instrument panel
- Air conditioning, single-zone manual
- Air vents, rear, heating/cooling (Not available on Regular Cab models.)
- Mirror, inside rearview, manual tilt
- Assist handles front A-pillar mounted for driver and passenger, rear B-pillar mounted

## Safety-Mechanical

- Automatic Emergency Braking
- Front Pedestrian Braking

This document contains information considered Confidential between GM and its Clients uniquely. The information provided is not intended for public disclosure. Prices, specifications, and availability are subject to change without notice, and do not include certain fees, taxes and charges that may be required by law or vary by manufacturer or region. Performance figures are guidelines only, and actual performance may vary. Photos may not represent actual vehicles or exact configurations. Content based on report preparer's input is subject to the accuracy of the input provided.

Data Version: 23892. Data Updated: Nov 7, 2024 6:45:00 PM PST.



# Hardy Chevrolet Buick GMC Inc

Desmond Delesline | 6787803034 | ddelesline@hardyautomotive.com

Vehicle: [Fleet] 2025 Chevrolet Silverado 1500 (CK10543) 4WD Crew Cab 147" Work Truck (  Complete )

## Safety-Mechanical

StabiliTrak, stability control system with Proactive Roll Avoidance and traction control, includes electronic trailer sway control and hill start assist

## Safety-Exterior

Daytime Running Lamps with automatic exterior lamp control

## Safety-Interior

Airbags, Dual-stage frontal airbags for driver and front outboard passenger; Seat-mounted side-impact airbags for driver and front outboard passenger; Head-curtain airbags for front and rear outboard seating positions; Includes front outboard Passenger Sensing System for frontal outboard passenger airbag (Always use seat belts and child restraints. Children are safer when properly secured in a rear seat in the appropriate child restraint. See the Owner's Manual for more information.)

OnStar Services capable (See onstar.com for details and limitations. Services vary by model. Service plan required.)

OnStar Basics (OnStar Fleet Basics for Fleet) Drive confidently with core OnStar services including remote commands, built-in voice assistance, real-time traffic and navigation, and Automatic Crash Response to help if you're in need. (OnStar Basics includes remote commands, Navigation, Voice Assistance, and Automatic Crash Response, for eligible vehicles with compatible software. For MY25 vehicles, OnStar Basics is standard for 8 years; OnStar plan, working electrical system, cell reception and GPS signal required. OnStar links to emergency services. Service coverage varies with conditions and location. Service availability, features and functionality vary by device and software version. See onstar.com for details and limitations.)

HD Rear Vision Camera

Lane Keep Assist with Lane Departure Warning

Following Distance Indicator

Forward Collision Alert

Rear Seat Reminder (Requires Crew Cab or Double Cab model.)

Rear Seat Belt Indicator (Requires Crew Cab or Double Cab model.)

Teen Driver a configurable feature that lets you activate customizable vehicle settings associated with a key fob, to help encourage safe driving behavior. It can limit certain available vehicle features, and it prevents certain safety systems from being turned off. An in-vehicle report card gives you information on driving habits and helps you to continue to coach your new driver

Buckle to Drive prevents vehicle from being shifted out of Park until driver seat belt is fastened; times out after 20 seconds and encourages seat belt use, can be turned on and off in Settings menu

Tire Pressure Monitoring System, auto learn includes Tire Fill Alert (does not apply to spare tire)

This document contains information considered Confidential between GM and its Clients uniquely. The information provided is not intended for public disclosure. Prices, specifications, and availability are subject to change without notice, and do not include certain fees, taxes and charges that may be required by law or vary by manufacturer or region. Performance figures are guidelines only, and actual performance may vary. Photos may not represent actual vehicles or exact configurations. Content based on report preparer's input is subject to the accuracy of the input provided.

Data Version: 23892. Data Updated: Nov 7, 2024 6:45:00 PM PST.



# Hardy Chevrolet Buick GMC Inc

Desmond Delesline | 6787803034 | ddelesline@hardyautomotive.com

Vehicle: [Fleet] 2025 Chevrolet Silverado 1500 (CK10543) 4WD Crew Cab 147" Work Truck (✓ Complete)

## WARRANTY

Warranty Note: <<< Preliminary 2025 Warranty >>>

Basic Years: 3

Basic Miles/km: 36,000

Drivetrain Years: 5

Drivetrain Miles/km: 60,000

Drivetrain Note: Silverado TurboMax<sup>TM</sup> engines, 3.0L & 6.0L Duramax® Turbo-Diesel engines, and certain commercial, government, and qualified fleet vehicles: 5 years/100,000 miles

Corrosion Years (Rust-Through): 6

Corrosion Years: 3

Corrosion Miles/km (Rust-Through): 100,000

Corrosion Miles/km: 36,000

Roadside Assistance Years: 5

Roadside Assistance Miles/km: 60,000

Roadside Assistance Note: Silverado TurboMax<sup>TM</sup> engines, 3.0L & 6.0L Duramax® Turbo-Diesel engines, and certain commercial, government, and qualified fleet vehicles: 5 years/100,000 miles

Maintenance Note: First Visit: 12 Months/12,000 Miles

This document contains information considered Confidential between GM and its Clients uniquely. The information provided is not intended for public disclosure. Prices, specifications, and availability are subject to change without notice, and do not include certain fees, taxes and charges that may be required by law or vary by manufacturer or region. Performance figures are guidelines only, and actual performance may vary. Photos may not represent actual vehicles or exact configurations. Content based on report preparer's input is subject to the accuracy of the input provided.

Data Version: 23892. Data Updated: Nov 7, 2024 6:45:00 PM PST.