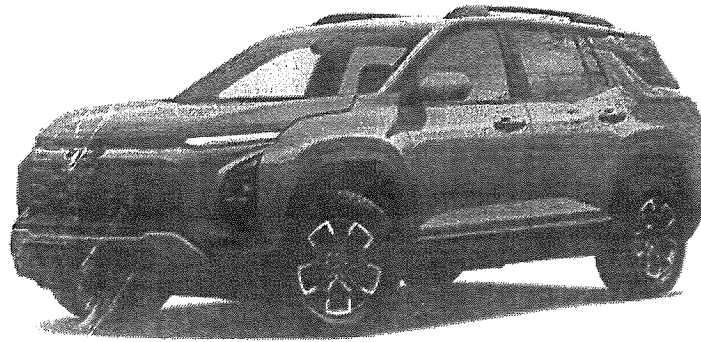




Hardy Chevrolet Buick GMC Inc

Desmond Delesline | 6787803034 | ddelesline@hardyautomotive.com

Vehicle: [Fleet] 2025 Chevrolet Equinox (1PT26) AWD 4dr LT w/2LT





Hardy Chevrolet Buick GMC Inc

Desmond Delesline | 6787803034 | ddelesline@hardyautomotive.com

Vehicle: [Fleet] 2025 Chevrolet Equinox (1PT26) AWD 4dr LT w/2LT (Complete)

Quote Worksheet

	MSRP
Base Price	\$30,600.00
Dest Charge	\$1,395.00
Total Options	\$0.00
Subtotal	\$31,995.00
FLEET ADJUSTMENT	(\$2,050.00)
DELIVERY	\$150.00
Subtotal Pre-Tax Adjustments	(\$1,900.00)
Less Customer Discount	\$0.00
Subtotal Discount	\$0.00
Trade-In	\$0.00
Subtotal Trade-In	\$0.00
Taxable Price	\$30,095.00
Sales Tax	\$0.00
Subtotal Taxes	\$0.00
Subtotal Post-Tax Adjustments	\$0.00
Total Sales Price	\$30,095.00

Dealer Signature / Date

Customer Signature / Date

This document contains information considered Confidential between GM and its Clients uniquely. The information provided is not intended for public disclosure. Prices, specifications, and availability are subject to change without notice, and do not include certain fees, taxes and charges that may be required by law or vary by manufacturer or region. Performance figures are guidelines only, and actual performance may vary. Photos may not represent actual vehicles or exact configurations. Content based on report preparer's input is subject to the accuracy of the input provided.

Data Version: 23892. Data Updated: Nov 7, 2024 6:45:00 PM PST.



Hardy Chevrolet Buick GMC Inc

Desmond Delesline | 6787803034 | ddelesline@hardyautomotive.com

Vehicle: [Fleet] 2025 Chevrolet Equinox (1PT26) AWD 4dr LT w/2LT (✔ Complete)

Selected Model and Options

MODEL

CODE	MODEL
1PT26	2025 Chevrolet Equinox AWD 4dr LT w/2LT

COLORS

CODE	DESCRIPTION
GXD	Sterling Gray Metallic

EMISSIONS

CODE	DESCRIPTION	FRONT WEIGHT	REAR WEIGHT
FE9	Emissions, Federal requirements	0.00 lbs	0.00 lbs
NTB	Emissions, Federal	0.00 lbs	0.00 lbs

ENGINE

CODE	DESCRIPTION	FRONT WEIGHT	REAR WEIGHT
LSD	Engine, 1.5L Turbo DOHC 4-cylinder, SIDI, VVT (STD)	0.00 lbs	0.00 lbs

TRANSMISSION

CODE	DESCRIPTION	FRONT WEIGHT	REAR WEIGHT
MGH	Transmission, 8-speed automatic (STD)	0.00 lbs	0.00 lbs

AXLE

CODE	DESCRIPTION	FRONT WEIGHT	REAR WEIGHT
FHB	Axle, 3.47 final drive ratio (AWD only.)	0.00 lbs	0.00 lbs

PREFERRED EQUIPMENT GROUP

CODE	DESCRIPTION	FRONT WEIGHT	REAR WEIGHT
2LT	LT Preferred Equipment Group includes standard equipment	0.00 lbs	0.00 lbs

WHEELS

CODE	DESCRIPTION	FRONT WEIGHT	REAR WEIGHT
RSC	Wheels, 17" (43.2 cm) Grazen Metallic machined-face aluminum (STD)	0.00 lbs	0.00 lbs

This document contains information considered Confidential between GM and its Clients uniquely. The information provided is not intended for public disclosure. Prices, specifications, and availability are subject to change without notice, and do not include certain fees, taxes and charges that may be required by law or vary by manufacturer or region. Performance figures are guidelines only, and actual performance may vary. Photos may not represent actual vehicles or exact configurations. Content based on report preparer's input is subject to the accuracy of the input provided.

Data Version: 23892. Data Updated: Nov 7, 2024 6:45:00 PM PST.



Hardy Chevrolet Buick GMC Inc

Desmond Delesline | 6787803034 | ddelesline@hardyautomotive.com

Vehicle: [Fleet] 2025 Chevrolet Equinox (1PT26) AWD 4dr LT w/2LT (Complete)

TIRES		FRONT WEIGHT	REAR WEIGHT
CODE	DESCRIPTION		
RJS	Tires, 235/65R17, all-season blackwall (STD)	0.00 lbs	0.00 lbs
PAINT		FRONT WEIGHT	REAR WEIGHT
CODE	DESCRIPTION		
GXD	Sterling Gray Metallic	0.00 lbs	0.00 lbs
SEAT TYPE		FRONT WEIGHT	REAR WEIGHT
CODE	DESCRIPTION		
AR9	Seats, front bucket (STD)	0.00 lbs	0.00 lbs
SEAT TRIM		FRONT WEIGHT	REAR WEIGHT
CODE	DESCRIPTION		
EKV	Black, Cloth seat trim	0.00 lbs	0.00 lbs
Options Total		0.00 lbs	0.00 lbs

This document contains information considered Confidential between GM and its Clients uniquely. The information provided is not intended for public disclosure. Prices, specifications, and availability are subject to change without notice, and do not include certain fees, taxes and charges that may be required by law or vary by manufacturer or region. Performance figures are guidelines only, and actual performance may vary. Photos may not represent actual vehicles or exact configurations. Content based on report preparer's input is subject to the accuracy of the input provided.

Data Version: 23892. Data Updated: Nov 7, 2024 6:45:00 PM PST.



Hardy Chevrolet Buick GMC Inc

Desmond Delesline | 6787803034 | ddelesline@hardyautomotive.com

Vehicle: [Fleet] 2025 Chevrolet Equinox (1PT26) AWD 4dr LT w/2LT (✔ Complete)

Standard Equipment

Package

Convenience Package I includes (BTV) Remote Start, (DAE) illuminated visor vanity mirrors, (KA1) driver and front passenger heated seats, (KI3) heated steering wheel and (WLM) remote express-up/-down driver and express-down all passengers

Chevy Safety Assist includes Automatic Emergency Braking, Front Pedestrian Braking, Lane Keep Assist with Lane Departure Warning, Following Distance Indicator, (UEU) Forward Collision Alert and IntelliBeam (Automatic Emergency Braking replaced by (UGN) Enhanced Automatic Emergency Braking. Lane Keep Assist with Lane Departure Warning replaced by (UKM) Enhanced Lane Keep Assist with Lane Departure Warning. Front Pedestrian Braking replaced by standard Front Pedestrian and Bicyclist Braking.)

Mechanical

Engine, 1.5L Turbo DOHC 4-cylinder, SIDI, VVT (STD)
Transmission, 8-speed automatic (STD)
Axle, 3.47 final drive ratio (AWD only.)
Fuel, gasoline, E15
Automatic Stop/Start
All-wheel drive
Suspension, front MacPherson strut
Suspension, rear 4-link
Battery, 70AH, 12V, 760 cold-cranking amps
Alternator, 130 amps
GVWR, 4850 lbs. (2200 kg) (AWD only.)
Brake, automatic vehicle hold
Brakes, 16" front sliding caliper disc, 16" rear sliding caliper disc
Brake lining wear indicator
Brake rotor, FNC
Exhaust, turned down, hidden
Mechanical jack with tools

Exterior

Wheels, 17" (43.2 cm) Grazen Metallic machined-face aluminum (STD)
Tires, 235/65R17, all-season blackwall (STD)
Wheel, compact spare 17" (43.2 cm) steel
Tire, compact spare, T125/70R17, blackwall

This document contains information considered Confidential between GM and its Clients uniquely. The information provided is not intended for public disclosure. Prices, specifications, and availability are subject to change without notice, and do not include certain fees, taxes and charges that may be required by law or vary by manufacturer or region. Performance figures are guidelines only, and actual performance may vary. Photos may not represent actual vehicles or exact configurations. Content based on report preparer's input is subject to the accuracy of the input provided.
Data Version: 23892. Data Updated: Nov 7, 2024 6:45:00 PM PST.



Hardy Chevrolet Buick GMC Inc

Desmond Delesline | 6787803034 | ddelesline@hardyautomotive.com

Vehicle: [Fleet] 2025 Chevrolet Equinox (1PT26) AWD 4dr LT w/2LT (✓ Complete)

Exterior

- Shutters, front upper and lower grille, active
- Headlamps, LED
- IntelliBeam, automatic high beam on/off
- Tail lamps, LED
- Glass, deep-tinted, rear
- Window, rear side, solar absorbing, privacy tinting
- Mirror caps, body-color
- Mirrors, outside heated power-adjustable, manual-folding
- Liftgate, rear manual

Entertainment

- Audio system feature, standard speaker system
- Infotainment, High
- SiriusXM Trial Subscription (IMPORTANT: The SiriusXM trial subscription is not provided on vehicles that are ordered for Fleet Daily Rental ("FDR") use. Trial subscription is subject to the SiriusXM Customer Agreement and privacy policy, visit www.siriusxm.com which includes full terms and how to cancel. All fees, content, features, and availability are subject to change.)
- 5G vehicle connectivity (Terms and limitations apply. See onstar.com or dealer for details.)
- Wi-Fi Hotspot capable (Terms and limitations apply. See onstar.com or dealer for details.)
- Wireless Apple CarPlay/Wireless Android Auto
- Google Automotive Services capable
- Noise control system, active noise cancellation
- USB Ports, 2 type-C located on back of center console, charge only
- USB Ports, 2, one type-A and one type-C data/charge, located in the front area of the center console

Interior

- Seats, front bucket (STD)
- Seat trim, Cloth
- Seats, heated driver and front passenger
- Seat adjuster, driver 6-way manual
- Seat adjuster, front passenger 4-way manual
- Headrest, rear center
- Armrest, rear center, fold-down with 2 cupholders

This document contains information considered Confidential between GM and its Clients uniquely. The information provided is not intended for public disclosure. Prices, specifications, and availability are subject to change without notice, and do not include certain fees, taxes and charges that may be required by law or vary by manufacturer or region. Performance figures are guidelines only, and actual performance may vary. Photos may not represent actual vehicles or exact configurations. Content based on report preparer's input is subject to the accuracy of the input provided.

Data Version: 23892. Data Updated: Nov 7, 2024 6:45:00 PM PST.



Hardy Chevrolet Buick GMC Inc

Desmond Delesline | 6787803034 | ddelesline@hardyautomotive.com

Vehicle: [Fleet] 2025 Chevrolet Equinox (1PT26) AWD 4dr LT w/2LT (Complete)

Interior

- Floor mats, carpeted rear
- Steering wheel, 3-spoke
- Steering wheel, heated, automatic
- Steering column, tilt and telescoping
- Speedometer, miles/kilometers
- Driver Information Center 11" diagonal Driver Information Center
- Display, AOS occupant sensing
- 11.3" diagonal advanced color LCD display with Google Built-In compatibility including navigation capability, connected apps, Natural Voice Recognition and Phone Integration for Wireless Apple CarPlay/Wireless Android Auto for compatible phones
- Vehicle health management
- Windows, remote express-up/-down driver and express-down all passengers
- Keyless Open and Start
- Remote Start
- Adaptive Cruise Control
- Remote panic alarm
- Air conditioning, single-zone
- Defogger, rear-window electric
- Air filter, pollutant
- Mirror, inside rearview manual day/night
- Visors, driver and front passenger illuminated vanity mirrors, covered
- Map pocket, driver seatback
- Map pocket, front passenger seatback
- Cargo mat, load floor
- Power outlet, cargo area auxiliary, 12-volt

Safety-Mechanical

- Enhanced Automatic Emergency Braking
- Intersection Automatic Emergency Braking intersection alert, braking

Safety-Interior

- Airbags, Dual-stage frontal airbags for driver and front passenger; Seat-mounted side-impact airbags for driver and front outboard passenger; Head-curtain airbags for front and rear outboard seating positions; Includes front outboard Passenger Sensing System for frontal passenger airbag

This document contains information considered Confidential between GM and its Clients uniquely. The information provided is not intended for public disclosure. Prices, specifications, and availability are subject to change without notice, and do not include certain fees, taxes and charges that may be required by law or vary by manufacturer or region. Performance figures are guidelines only, and actual performance may vary. Photos may not represent actual vehicles or exact configurations. Content based on report preparer's input is subject to the accuracy of the input provided.

Data Version: 23892. Data Updated: Nov 7, 2024 6:45:00 PM PST.



Hardy Chevrolet Buick GMC Inc

Desmond Delesline | 6787803034 | ddelesline@hardyautomotive.com

Vehicle: [Fleet] 2025 Chevrolet Equinox (1PT26) AWD 4dr LT w/2LT (✔ Complete)

Safety-Interior

Airbag, Passenger Sensing System sensor indicator inflatable restraint, front passenger/child presence detector (Always use seat belts and child restraints. Children are safer when properly secured in a rear seat in the appropriate child restraint. See the Owner's Manual for more information.)

OnStar Services capable (See onstar.com for details and limitations. Services vary by model. Service plan required.)

OnStar Basics (OnStar Fleet Basics for Fleet) Drive confidently with core OnStar services including remote commands, built-in voice assistance, real-time traffic and navigation, and Automatic Crash Response to help if you're in need. (OnStar Basics includes remote commands, Navigation, Voice Assistance, and Automatic Crash Response, for eligible vehicles with compatible software. For MY25 vehicles, OnStar Basics is standard for 8 years; OnStar plan, working electrical system, cell reception and GPS signal required. OnStar links to emergency services. Service coverage varies with conditions and location. Service availability, features and functionality vary by device and software version. See onstar.com for details and limitations.)

Rear Park Assist

HD Rear Vision Camera

Forward Collision Alert

Following distance indicator

Front Pedestrian and Bicyclist Braking

Rear Cross Traffic Braking

Reverse Automatic Braking

Blind Zone Steering Assist

Lane Keep Assist with Lane Departure Warning, enhanced

Side Bicyclist Alert

Occupant Presence Detection, front and rear

Buckle to Drive prevents vehicle from being shifted out of Park until driver seat belt is fastened; times out after 20 seconds and encourages seat belt use

Safety Alert Seat

Seat Belt Adjustable Guide Loops

Rear Seat Reminder

This document contains information considered Confidential between GM and its Clients uniquely. The information provided is not intended for public disclosure. Prices, specifications, and availability are subject to change without notice, and do not include certain fees, taxes and charges that may be required by law or vary by manufacturer or region. Performance figures are guidelines only, and actual performance may vary. Photos may not represent actual vehicles or exact configurations. Content based on report preparer's input is subject to the accuracy of the input provided.

Data Version: 23892. Data Updated: Nov 7, 2024 6:45:00 PM PST.



Hardy Chevrolet Buick GMC Inc

Desmond Delesline | 6787803034 | ddelesline@hardyautomotive.com

Vehicle: [Fleet] 2025 Chevrolet Equinox (1PT26) AWD 4dr LT w/2LT (Complete)

WARRANTY

Warranty Note: <<< Preliminary 2025 Warranty >>>

Basic Years: 3

Basic Miles/km: 36,000

Drivetrain Years: 5

Drivetrain Miles/km: 60,000

Drivetrain Note: Certain commercial, government, and qualified fleet vehicles: 5 years/100,000 miles

Corrosion Years (Rust-Through): 6

Corrosion Years: 3

Corrosion Miles/km (Rust-Through): 100,000

Corrosion Miles/km: 36,000

Roadside Assistance Years: 5

Roadside Assistance Miles/km: 60,000

Roadside Assistance Note: Certain commercial, government, and qualified fleet vehicles: 5 years/100,000 miles

Maintenance Note: First Visit: 12 Months/12,000 Miles

This document contains information considered Confidential between GM and its Clients uniquely. The information provided is not intended for public disclosure. Prices, specifications, and availability are subject to change without notice, and do not include certain fees, taxes and charges that may be required by law or vary by manufacturer or region. Performance figures are guidelines only, and actual performance may vary. Photos may not represent actual vehicles or exact configurations. Content based on report preparer's input is subject to the accuracy of the input provided.

Data Version: 23892. Data Updated: Nov 7, 2024 6:45:00 PM PST.