

GENERAL NOTES

- 1) ACCORDING TO THE F.E.M.A. FLOOD INSURANCE RATE MAP...
2) CURRENT ZONING ACCORDING TO THE CITY OF FOREST PARK...
3) HORIZONTAL AND VERTICAL REFERENCE SHOWN HEREON...
4) ALL DISTANCES SHOWN HEREON ARE "GROUND" DISTANCES...
5) CONTOUR INTERVALS IF SHOWN ARE TWO FEET.
6) THIS SURVEY WAS DONE UNDER MY SUPERVISION...

SPECIAL NOTES

- 1) CERTIFICATION AND DECLARATION IS MADE TO THE ENTITIES AS LISTED IN THE TITLE BLOCK...
2) SUBSURFACE AND ENVIRONMENTAL CONDITIONS WERE NOT EXAMINED...
3) THE UNDERSIGNED SURVEYOR HAS MADE NO INVESTIGATION...
4) PURSUANT TO RULE 180-6.09 OF THE GEORGIA STATE BOARD OF REGISTRATION...

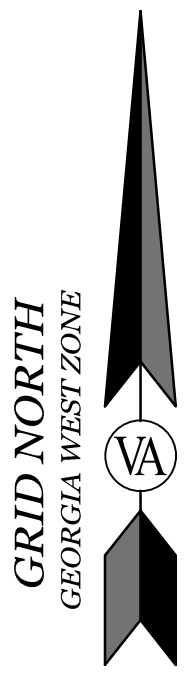
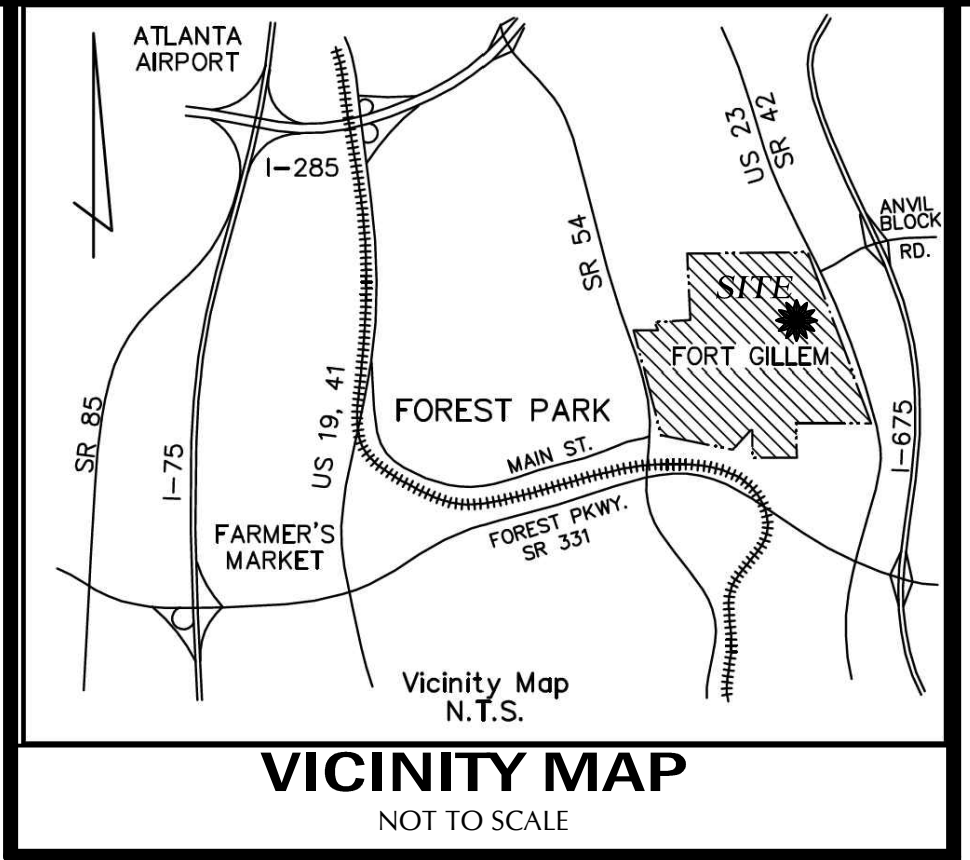
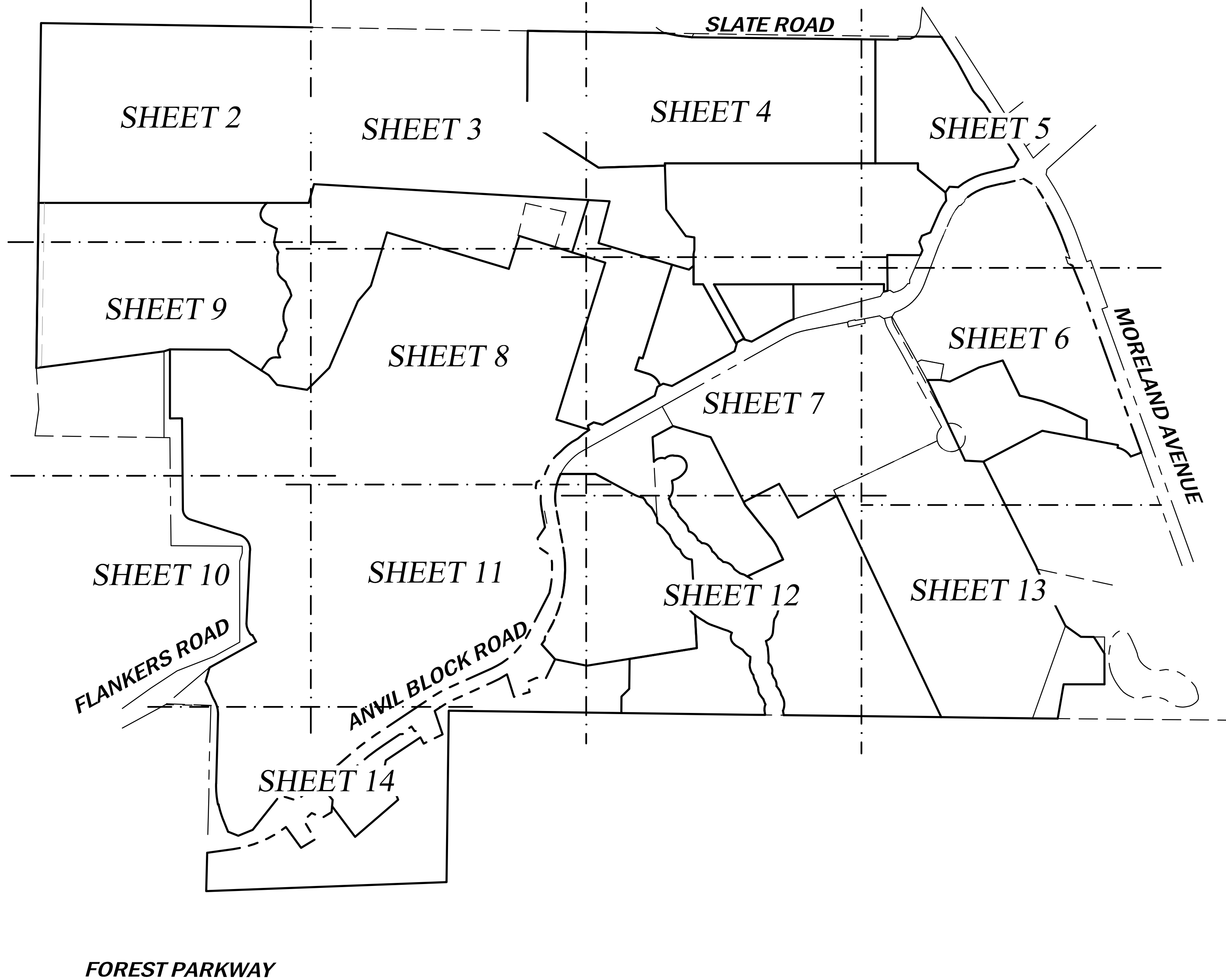
PLAT REFERENCES

- 1) "A PLAT OF FORT GILLEM (ATLANTA ARMY DEPOT)" PREPARED BY LOWE ENGINEERS, DATED 7/31/2012, LAST REVISED 7/31/2014.

RESERVED FOR CLERK OF COURT

LEGEND

- BROKEN LINE NOT TO SCALE
FENCE LINE
GUARDRAIL
UNDERGROUND GAS LINE
OVERHEAD ELECTRIC LINE
OVERHEAD TELEPHONE LINE
SANITARY SEWER LINE
SANITARY SEWER FORCEMAIN LINE
UNDERGROUND ELECTRIC LINE
UNDERGROUND TELEPHONE LINE
UNKNOWN UNDERGROUND UTILITY LINE
WATER LINE
WETLANDS AREA
CATCH BASIN SINGLE WING
CATCH BASIN DOUBLE WING
COMPUTED POINT
BORING HOLE
CLEANOUT
COMMUNICATION BOX
ELECTRIC BOX
ELECTRIC LINE MARKER
ELECTRIC MANHOLE
ELECTRIC METER
ELECTRIC OUTLET
ELECTRIC SWITCH
FIBER OPTIC BOX
FIBER OPTIC LINE MARKER
FIRE HYDRANT
FLARED END SECTION
GAS LINE MARKER
GAS METER
GAS VALVE
GROUND LIGHT
GUY POLE
GUY WIRE
HEADWALL
HEATING/AIR CONDITIONING UNIT
IRRIGATION CONTROL VALVE
LIGHT POLE
POST INDICATOR VALVE
POWER POLE
SANITARY SEWER MANHOLE
SIGN POST
STORM WATER DROP INLET
STORM WATER JUNCTION BOX
STORM WATER YARD INLET
TELEPHONE MANHOLE
TELEPHONE POLE
TRAFFIC SIGNAL BOX
TRAFFIC SIGNAL POLE
WATER MANHOLE
WATER METER
WATER VALVE
WATER VALVE LINE MARKER
BOLLARD
CONCRETE MONUMENT FOUND
CRIMPED TOP PIPE FOUND
E-PAN
FINISHED FLOOR ELEVATION
IRRIGATION BOX
IRON PIN FOUND
1/2" IRON PIN SET
MAIL BOX
OPEN TOP PIPE FOUND
PK NAIL FOUND
PK NAIL SET
REBAR FOUND
RIGHT-OF-WAY MONUMENT FOUND
RAILROAD SIGNAL BOX
STUB OUT
BUILDING SETBACK LINE
CURB & GUTTER
CONCRETE PAD
CHAIN LINK FENCE
CORRUGATED METAL PIPE
DEED BOOK & PAGE
DUCTILE IRON PIPE
HEADER CURB
HIGH DENSITY POLYETHYLENE PIPE
INVERT ELEVATION
OUTLET CONTROL STRUCTURE
PLASTIC PIPE
REINFORCED CONCRETE PIPE
TEMPORARY BENCHMARK



DRAINAGE

THE OWNER OF RECORD, ON BEHALF OF HIMSELF (ITSELF) AND ALL SUCCESSORS IN INTEREST, SPECIFICALLY RELEASES THE CITY OF FOREST PARK FROM ALL LIABILITY AND RESPONSIBILITY FOR FLOODING OR EROSION FROM STORM DRAINS OR FROM FLOODING FROM HIGH WATER OF NATURAL CREEKS, RIVERS, OR DRAINAGE FEATURES...

SUCH EMERGENCY MAINTENANCE, CONDUCTED FOR A COMMON GOOD, SHALL NOT BE CONSTRUED AS CONSTITUTING MAINTENANCE OBLIGATION ON THE PART OF THE CITY OF FOREST PARK, NOR AN ABROGATION OF THE CITY OF FOREST PARK'S RIGHT TO SEEK REIMBURSEMENT FOR EXPENSES FROM THE OWNERS OF THE PROPERTY OR THE LANDS THAT GENERATED THE CONDITIONS.

SUBDIVISION PLAT APPROVAL

THE DIRECTOR OF PLANNING, BUILDING & ZONING FOR THE CITY OF FOREST PARK, GEORGIA CERTIFIES THAT THIS PLAT COMPLIES WITH THE CITY OF FOREST PARK ZONING ORDINANCE AND THE CITY OF FOREST PARK SUBDIVISION REGULATIONS AS AMENDED.

FOR THE DIRECTOR OF PLANNING, BUILDING & ZONING DATE

- a. STATEMENT OF SLOPE EASEMENT
i. THIS PLAT IS APPROVED WITH THE UNDERSTANDING THAT EASEMENT IS GRANTED TO THE CITY OF FOREST PARK ALONG ALL ROAD FRONTAGE FOR THE PURPOSE OF SLOPING CUTS AND FILLS AS FOLLOWS:
ii. 0' TO 5' - NOT LESS THAN 3 TO 1 SLOPE
iii. 5' TO 10' - NOT LESS THAN 2 TO 1 SLOPE
b. APPROVAL OF DEPARTMENT OF HEALTH

SURVEYOR'S CERTIFICATE

IT IS HEREBY CERTIFIED THAT THIS SUBDIVISION PLAT IS TRUE AND CORRECT AND WAS PREPARED FROM AN ACTUAL SURVEY OF THE PROPERTY, MADE BY ME OR UNDER MY SUPERVISION, THAT ALL MONUMENTS SHOWN HEREON ACTUALLY EXIST, OR ARE MARKED AS 'FUTURE', AND THEIR LOCATION, SIZE, TYPE AND MATERIAL IS CORRECTLY SHOWN.

GLENN A. VALENTINO GA. RLS #2528

STATE OF GEORGIA PLAT ACT CERTIFICATION

AS REQUIRED BY SUBSECTION (d) OF O.C.G.A. SECTION 15-6-67, THIS PLAT HAS BEEN PREPARED BY A LAND SURVEYOR AND APPROVED BY ALL APPLICABLE LOCAL JURISDICTIONS FOR RECORDING AS EVIDENCED BY APPROVAL CERTIFICATES, SIGNATURES, STAMPS, OR STATEMENTS HEREON...

GLENN A. VALENTINO GA. RLS #2528
DATE OF EXPIRATION: 12/31/2022

SUBDIVISION PLAT OF: FT. GILLEM DEVELOPMENT FOR THE CITY OF FOREST PARK

VA VALENTINO & ASSOCIATES, INC. LAND SURVEYORS
4045 ORCHARD ROAD
BUILDING 200
SMYRNA, GEORGIA 30080
PHONE: (770) 438-0015
FAX: (770) 435-6050
WEB: VALENTINOSURVEY.COM
STATE OF GEORGIA LAND SURVEYING FIRM LICENSE NO. LSF000794

REVISIONS

Table with columns for revision number, date, and address comments.



SCALE: 1" = 100'
DATE: 10/20/2022
JOB NUMBER: 15-074
FILE NUMBER: 15-074-SD
PLOTTED: 1/13/2023

FINAL SUBDIVISION PLAT

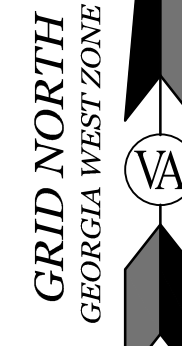


Know what's below. Call before you dig. Or Call 800-282-7411 Three working days prior to construction

UTILITY WARNING

INFORMATION REGARDING THE REPUTED PRESENCE, SIZE, CHARACTER, AND LOCATION OF EXISTING UNDERGROUND UTILITIES AND STRUCTURES IS SHOWN HEREON. THERE IS NO CERTAINTY OF THE ACCURACY OF THIS INFORMATION AND IT SHALL BE CONSIDERED IN THAT LIGHT BY THOSE USING THIS DRAWING...

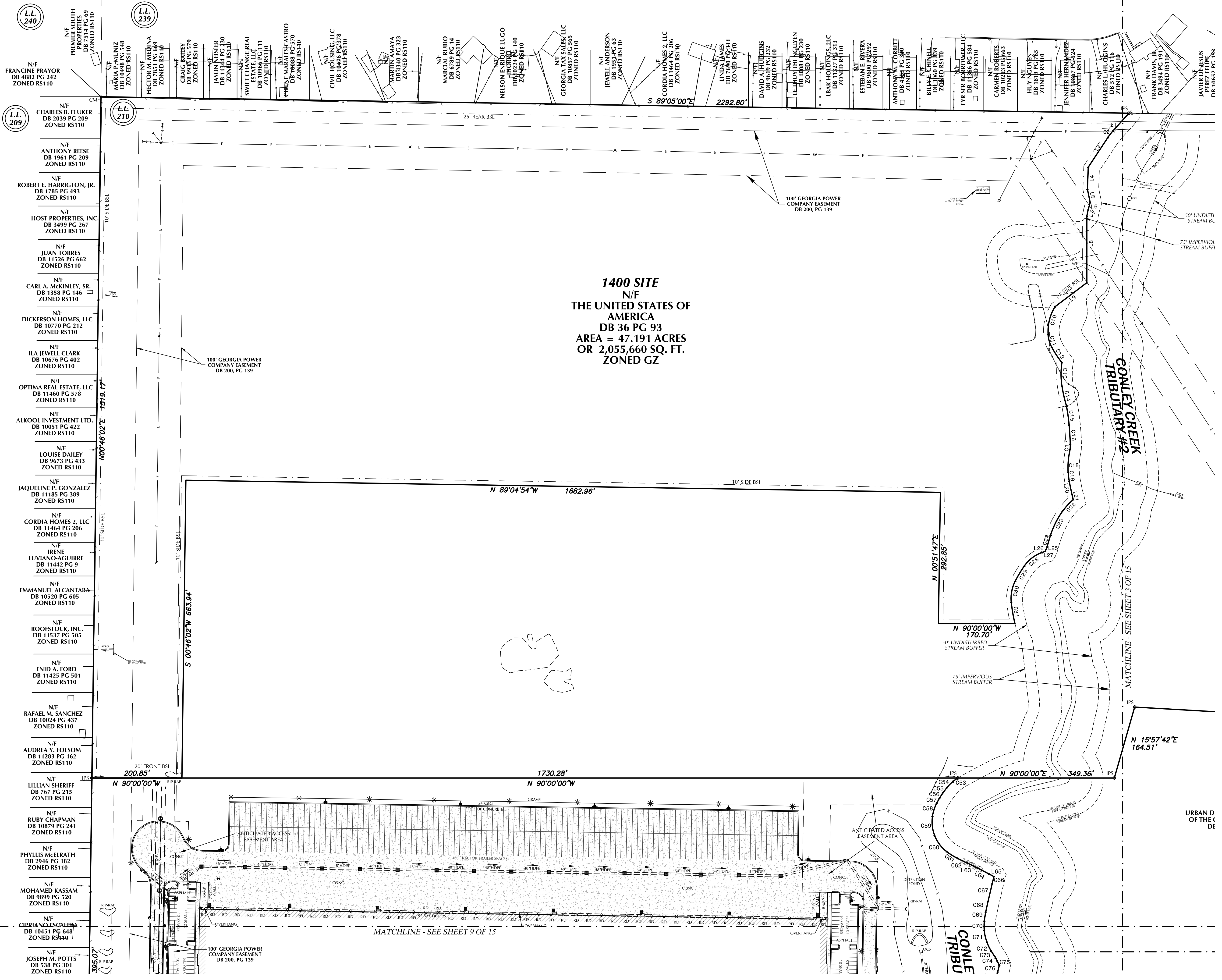
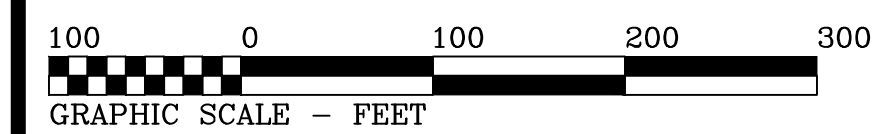
FOREST PARKWAY



RESERVED FOR CLERK OF COURT

LEGEND

- BROKEN LINE NOT TO SCALE
- X- FENCE LINE
- G- GUARDRAIL
- L- UNDERGROUND GAS LINE
- L- OVERHEAD ELECTRIC LINE
- T- OVERHEAD TELEPHONE LINE
- S- SANITARY SEWER LINE
- FM- SANITARY SEWER FORCEMAIN LINE
- UE- UNDERGROUND ELECTRIC LINE
- UT- UNDERGROUND TELEPHONE LINE
- UNK- UNKNOWN UNDERGROUND UTILITY LINE
- W- WATER LINE
- WET- WETLANDS AREA
- ▲ CATCH BASIN SINGLE WING
- ▲ CATCH BASIN DOUBLE WING
- COMPUTED POINT
- BORING HOLE
- CLEANOUT
- COMMUNICATION BOX
- ELECTRIC BOX
- ELECTRIC LINE MARKER
- ELECTRIC MANHOLE
- ELECTRIC METER
- ELECTRIC OUTLET
- ELECTRIC SWITCH
- FIBER OPTIC BOX
- FIBER OPTIC LINE MARKER
- FIRE HYDRANT
- FLARED END SECTION
- GAS LINE MARKER
- GAS METER
- GAS VALVE
- GROUND LIGHT
- GUY POLE
- GUY WIRE
- HEADWALL
- HEATING/AIR CONDITIONING UNIT
- IRRIGATION CONTROL VALVE
- LIGHT POLE
- POST INDICATOR VALVE
- POWER POLE
- SANITARY SEWER MANHOLE
- SIGN POST
- STORM WATER DROP INLET
- STORM WATER JUNCTION BOX
- STORM WATER YARD INLET
- TELEPHONE MANHOLE
- TELEPHONE POLE
- TRAFFIC SIGNAL BOX
- TRAFFIC SIGNAL POLE
- WATER MANHOLE
- WATER METER
- WATER VALVE
- WATER VALVE LINE MARKER
- BOLLARD
- CMF CONCRETE MONUMENT FOUND
- CTF CRIMPED TOP PIPE FOUND
- E-PAN ELECTRIC PANEL
- FFE FINISHED FLOOR ELEVATION
- IRB IRRIGATION BOX
- IPF IRON PIN FOUND
- IPS 1/2" IRON PIN SET
- MB MAIL BOX
- OTF OPEN TOP PIPE FOUND
- PKF PK NAIL FOUND
- PKS PK NAIL SET
- RBF REBAR FOUND
- RMF RIGHT-OF-WAY MONUMENT FOUND
- RRSB RAILROAD SIGNAL BOX
- SO STUB OUT
- BSL BUILDING SETBACK LINE
- C&G CURB & GUTTER
- CP CONCRETE PAD
- CLF CHAIN LINK FENCE
- CMP CORRUGATED METAL PIPE
- DB PG DEED BOOK & PAGE
- DIP DUCTILE IRON PIPE
- HC HEADER CURB
- HDPE HIGH DENSITY POLYETHYLENE PIPE
- INV INVERT ELEVATION
- OCS OUTLET CONTROL STRUCTURE
- PB PG PLAT BOOK & PAGE
- PVC PLASTIC PIPE
- RCP REINFORCED CONCRETE PIPE
- TBM TEMPORARY BENCHMARK

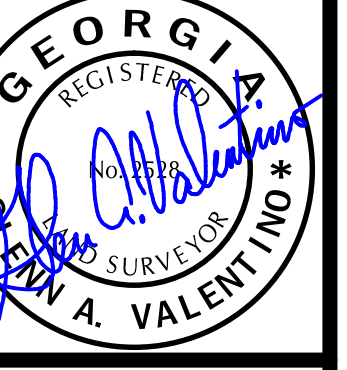


SUBDIVISION PLAT OF:
FT. GILLEM DEVELOPMENT
 FOR
THE CITY OF FOREST PARK

VA
 VALENTINO &
 ASSOCIATES, INC.
 LAND SURVEYORS
 4045 ORCHARD ROAD
 BUILDING 200
 SMYRNA, GEORGIA 30080
 PHONE: (770) 438-0015
 FAX: (770) 435-6050
 WEB: VALENTINOSURVEY.COM
 STATE OF GEORGIA LAND
 SURVEYING FIRM LICENSE
 NO. LS#00794

REVISIONS

NO.	DATE	DESCRIPTION

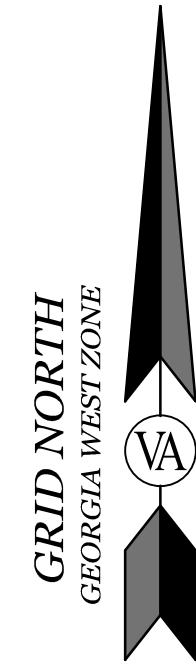


SCALE: 1" = 100'
 DATE: 10/20/2022
 JOB NUMBER: 15-074
 FILE NUMBER: 15-074-SD
 PLOTTED: 1/13/2023

FINAL SUBDIVISION PLAT

FOR ALL NOTES SEE SHEET 1

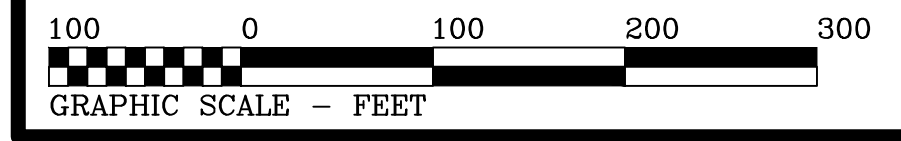
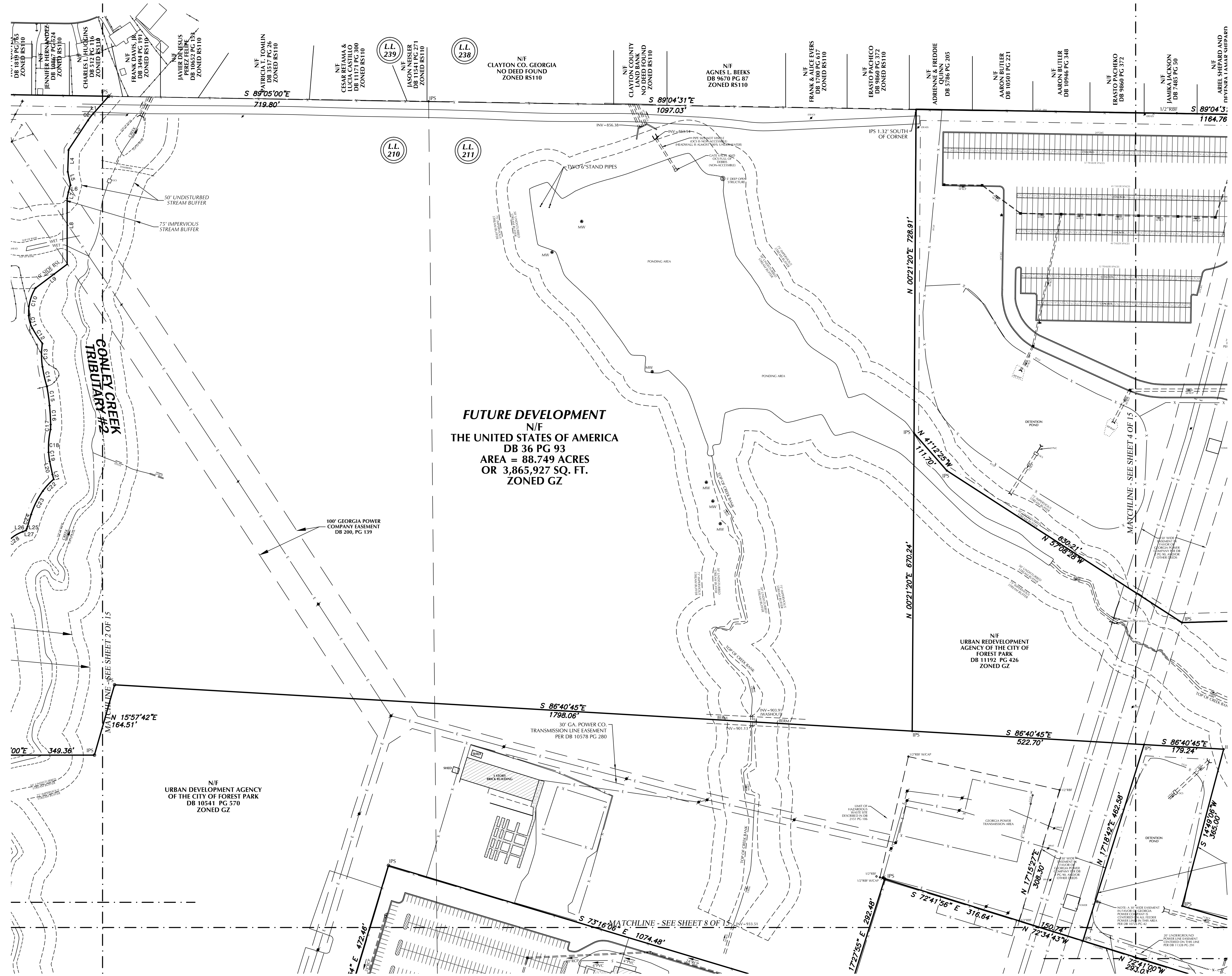
LAND LOTS 178,179,204,205,206,207,210,211 & 212 12TH DISTRICT CITY OF FOREST PARK, CLAYTON COUNTY, GEORGIA



RESERVED FOR CLERK OF COURT

LEGEND

- BROKEN LINE NOT TO SCALE
- - - FENCE LINE
- GUARDRAIL
- - - UNDERGROUND GAS LINE
- - - OVERHEAD ELECTRIC LINE
- - - OVERHEAD TELEPHONE LINE
- - - SANITARY SEWER LINE
- - - FM SANITARY SEWER FORCEMAIN LINE
- - - UNDERGROUND ELECTRIC LINE
- - - UT UNDERGROUND TELEPHONE LINE
- - - UNKNOWN UNDERGROUND UTILITY LINE
- - - WATER LINE
- - - WET WETLANDS AREA
- CATCH BASIN SINGLE WING
- CATCH BASIN DOUBLE WING
- COMPUTED POINT
- BORING HOLE
- CLEANOUT
- COMMUNICATION BOX
- ELECTRIC BOX
- ELECTRIC LINE MARKER
- ELECTRIC MANHOLE
- ELECTRIC METER
- ELECTRIC OUTLET
- ELECTRIC SWITCH
- FIBER OPTIC BOX
- FIBER OPTIC LINE MARKER
- FIRE HYDRANT
- FLARED END SECTION
- GAS LINE MARKER
- GAS METER
- GAS VALVE
- GROUND LIGHT
- GUY POLE
- GUY WIRE
- HEADWALL
- HEATING/AIR CONDITIONING UNIT
- IRRIGATION CONTROL VALVE
- LIGHT POLE
- POST INDICATOR VALVE
- POWER POLE
- SANITARY SEWER MANHOLE
- SIGN POST
- STORM WATER DROP INLET
- STORM WATER JUNCTION BOX
- STORM WATER YARD INLET
- TELEPHONE MANHOLE
- TELEPHONE POLE
- TRAFFIC SIGNAL BOX
- TRAFFIC SIGNAL POLE
- WATER MANHOLE
- WATER METER
- WATER VALVE
- WATER VALVE LINE MARKER
- BOLLARD
- CMF CONCRETE MONUMENT FOUND
- CTF CRIMPED TOP PIPE FOUND
- E-PAN ELECTRIC PANEL
- FFE FINISHED FLOOR ELEVATION
- IRB IRRIGATION BOX
- IPF IRON PIN FOUND
- IPS 1/2" IRON PIN SET
- MB MAIL BOX
- OTF OPEN TOP PIPE FOUND
- PKF PK NAIL FOUND
- PKS PK NAIL SET
- RBF REBAR FOUND
- RMF RIGHT-OF-WAY MONUMENT FOUND
- RRSB RAILROAD SIGNAL BOX
- SO STUB OUT
- BSL BUILDING SETBACK LINE
- C&G CURB & GUTTER
- CP CONCRETE PAD
- CLF CHAIN LINK FENCE
- CMP CORRUGATED METAL PIPE
- DB PG DEED BOOK & PAGE
- DIP DUCTILE IRON PIPE
- HC HEADER CURB
- HDPE HIGH DENSITY POLYETHYLENE PIPE
- INV INVERT ELEVATION
- OCS OUTLET CONTROL STRUCTURE
- PB PG PLAT BOOK & PAGE
- PVC PLASTIC PIPE
- RCP REINFORCED CONCRETE PIPE
- TBM TEMPORARY BENCHMARK



FOR ALL NOTES SEE SHEET 1

SUBDIVISION PLAT OF:
FT. GILLEM DEVELOPMENT
FOR
THE CITY OF FOREST PARK

VA
VALENTINO & ASSOCIATES, INC.
LAND SURVEYORS
4045 ORCHARD ROAD
BUILDING 200
SMYRNA, GEORGIA 30080
PHONE: (770) 438-0015
FAX: (770) 435-6050
WEB: VALENTINOSURVEY.COM
STATE OF GEORGIA LAND SURVEYING FIRM LICENSE NO. LSF000794

REVISIONS
7/13/23: ADDRESS COMMENTS.

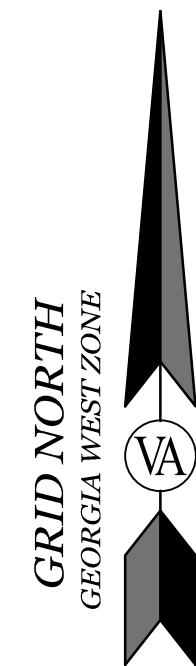
GEORGIA
REGISTERED
LAND SURVEYOR
J. A. VALENTINO

SCALE: 1" = 100'
DATE: 10/20/2022
JOB NUMBER: 15-074
FILE NUMBER: 15-074-SD
PLOTTED: 1/13/2023

FINAL SUBDIVISION PLAT

SHEET 3 OF 15

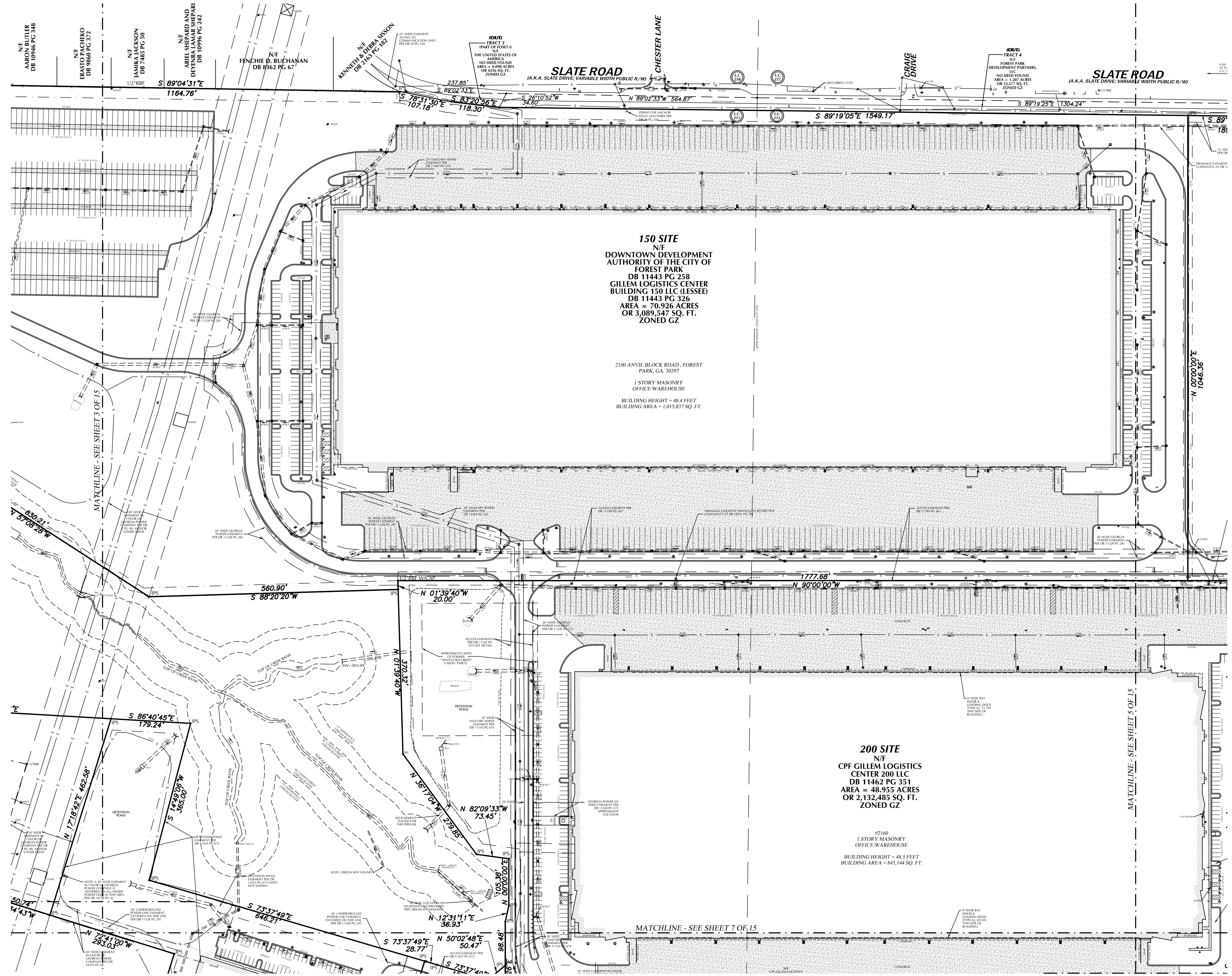
LAND LOTS 178,179,204,205,206,207,210,211 & 212 12TH DISTRICT CITY OF FOREST PARK, CLAYTON COUNTY, GEORGIA



RESERVED FOR CLERK OF COURT

LEGEND

- BROKEN LINE NOT TO SCALE
- - - FENCE LINE
- - - GUARDRAIL
- - - UNDERGROUND GAS LINE
- - - OVERHEAD ELECTRIC LINE
- - - OVERHEAD TELEPHONE LINE
- - - SANITARY SEWER LINE
- - - FM SANITARY SEWER FORCEMAIN LINE
- - - UNDERGROUND ELECTRIC LINE
- - - UNDERGROUND TELEPHONE LINE
- - - UNKNOWN UNDERGROUND UTILITY LINE
- - - WATER LINE
- - - WETLANDS AREA
- - - CATCH BASIN SINGLE WING
- - - CATCH BASIN DOUBLE WING
- - - COMPUTED POINT
- - - BORING HOLE
- - - CLEANOUT
- - - COMMUNICATION BOX
- - - ELECTRIC BOX
- - - ELECTRIC LINE MARKER
- - - ELECTRIC MANHOLE
- - - ELECTRIC METER
- - - ELECTRIC OUTLET
- - - ELECTRIC SWITCH
- - - FIBER OPTIC BOX
- - - FIBER OPTIC LINE MARKER
- - - FIRE HYDRANT
- - - FLARED END SECTION
- - - GAS LINE MARKER
- - - GAS METER
- - - GAS VALVE
- - - GROUND LIGHT
- - - GUY POLE
- - - GUY WIRE
- - - HEADWALL
- - - HEATING/AIR CONDITIONING UNIT
- - - IRRIGATION CONTROL VALVE
- - - LIGHT POLE
- - - POST INDICATOR VALVE
- - - POWER POLE
- - - SANITARY SEWER MANHOLE
- - - SIGN POST
- - - STORM WATER DROP INLET
- - - STORM WATER JUNCTION BOX
- - - STORM WATER YARD INLET
- - - TELEPHONE MANHOLE
- - - TELEPHONE POLE
- - - TRAFFIC SIGNAL BOX
- - - TRAFFIC SIGNAL POLE
- - - WATER MANHOLE
- - - WATER METER
- - - WATER VALVE
- - - WATER VALVE/VALVE MARKER
- - - BOLLARD
- - - CONCRETE MONUMENT FOUND
- - - CRIMPED TOP PIPE FOUND
- - - E-PAN
- - - FINISHED FLOOR ELEVATION
- - - IRB IRRIGATION BOX
- - - IPF IRON PIN FOUND
- - - IPS 1/2" IRON PIN SET
- - - MB MAIL BOX
- - - OTF OPEN TOP PIPE FOUND
- - - PKF PK NAIL FOUND
- - - PKS PK NAIL SET
- - - RBF REBAR FOUND
- - - RWF RIGHT-OF-WAY MONUMENT FOUND
- - - RRSB RAILROAD SIGNAL BOX
- - - SO STUB OUT
- - - BSL BUILDING SETBACK LINE
- - - C&G CURB & GUTTER
- - - CP CONCRETE PAD
- - - CLF CHAIN LINK FENCE
- - - CMP CORRUGATED METAL PIPE
- - - DB PG DEED BOOK & PAGE
- - - DHP DUCTILE IRON PIPE
- - - HC HEADER CURB
- - - HDPE HIGH DENSITY POLYETHYLENE PIPE
- - - INV INVERT ELEVATION
- - - OCS OUTLET CONTROL STRUCTURE
- - - PB PG PLAT BOOK & PAGE
- - - PVC PLASTIC PIPE
- - - RCP REINFORCED CONCRETE PIPE
- - - TBM TEMPORARY BENCHMARK



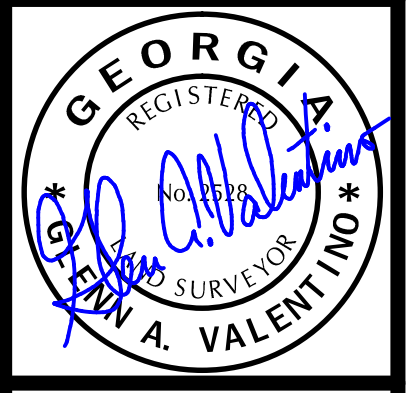
FOR ALL NOTES SEE SHEET 1

SUBDIVISION PLAT OF:
FT. GILLEM DEVELOPMENT
FOR
THE CITY OF FOREST PARK

VA
VALENTINO & ASSOCIATES, INC.
LAND SURVEYORS
4045 ORCHARD ROAD
BUILDING 200
SMYRNA, GEORGIA 30080
PHONE: (770) 438-0015
FAX: (770) 435-6050
WEB: VALENTINOSURVEY.COM
STATE OF GEORGIA LAND SURVEYING FIRM LICENSE NO. LSF00794

REVISIONS

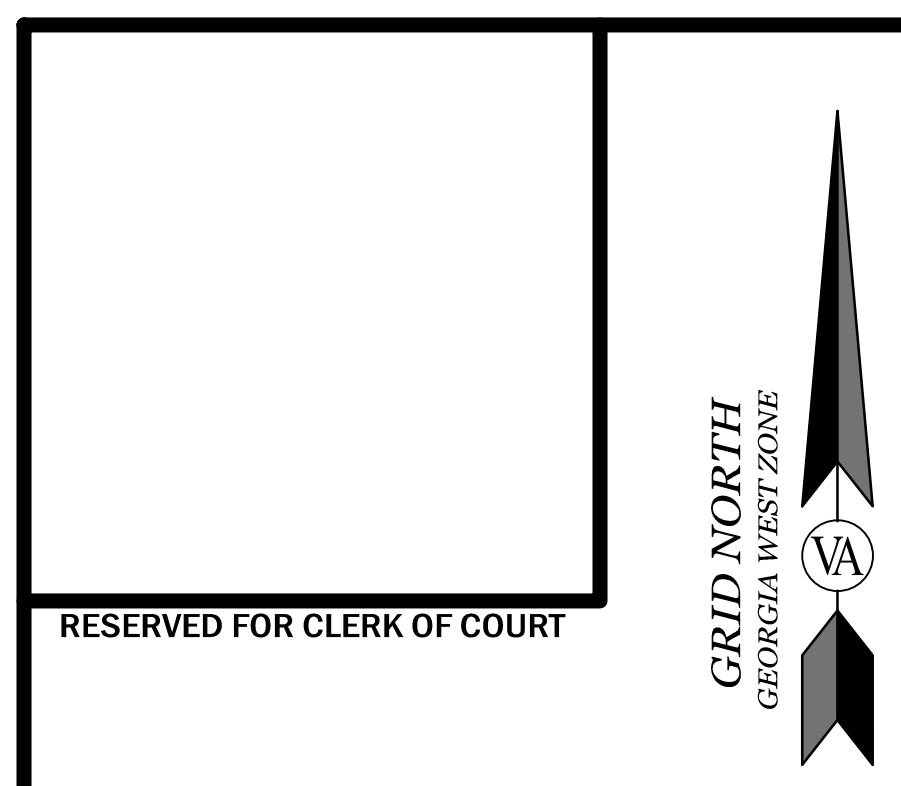
01/31/23: ADDRESS COMMENTS.



SCALE: 1" = 100'
DATE: 10/20/2022
JOB NUMBER: 15-074
FILE NUMBER: 15-074-SD
PLOTTED: 1/13/2023

FINAL SUBDIVISION PLAT

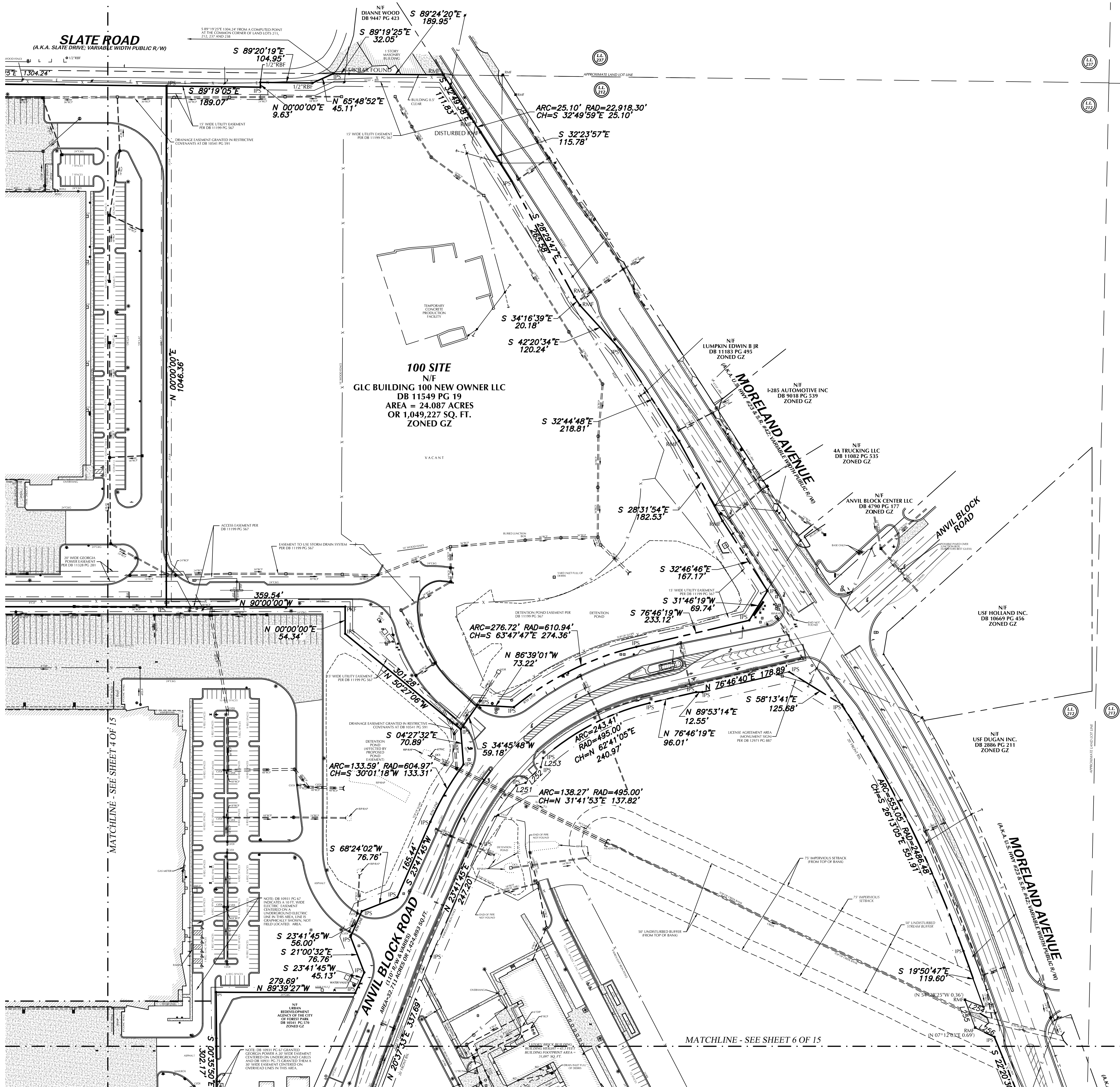
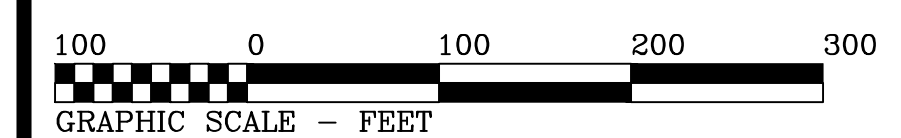
LAND LOTS 178,179,204,205,206,207,210,211 & 212 12TH DISTRICT CITY OF FOREST PARK, CLAYTON COUNTY, GEORGIA



RESERVED FOR CLERK OF COURT

LEGEND

- BROKEN LINE NOT TO SCALE
- FENCE LINE
- GUARDRAIL
- UNDERGROUND GAS LINE
- OVERHEAD ELECTRIC LINE
- OVERHEAD TELEPHONE LINE
- SANITARY SEWER LINE
- FM — SANITARY SEWER FORCEMAIN LINE
- UT — UNDERGROUND ELECTRIC LINE
- UT — UNDERGROUND TELEPHONE LINE
- LINK — UNKNOWN UNDERGROUND UTILITY LINE
- W — WATER LINE
- WET — WETLANDS AREA
- ▲ CATCH BASIN SINGLE WING
- ▲ CATCH BASIN DOUBLE WING
- COMPLETED POINT
- BORING HOLE
- CLEANOUT
- COMMUNICATION BOX
- ELECTRIC BOX
- ELECTRIC LINE MARKER
- ELECTRIC MANHOLE
- ELECTRIC METER
- ELECTRIC OUTLET
- ELECTRIC SWITCH
- FIBER OPTIC BOX
- FIBER OPTIC LINE MARKER
- FIRE HYDRANT
- FLARED END SECTION
- GAS LINE MARKER
- GAS METER
- GAS VALVE
- GROUND LIGHT
- GUY POLE
- GUY WIRE
- HEADWALL
- HEATING/ACR CONDITIONING UNIT
- IRRIGATION CONTROL VALVE
- LIGHT POLE
- POST INDICATOR VALVE
- POWER POLE
- SANITARY SEWER MANHOLE
- SIGN POST
- STORM WATER DROP INLET
- STORM WATER JUNCTION BOX
- STORM WATER YARD INLET
- TELEPHONE MANHOLE
- TELEPHONE POLE
- TRAFFIC SIGNAL BOX
- TRAFFIC SIGNAL POLE
- WATER MANHOLE
- WATER METER
- WATER VALVE
- WATER VALVE/LINE MARKER
- BOLLARD
- CMF — CONCRETE MONUMENT FOUND
- CTF — CRIMPED TOP PIPE FOUND
- E-PAN — ELECTRIC PANEL
- F-FE — FINISHED FLOOR ELEVATION
- IRB — IRRIGATION BOX
- IPF — IRON PIN FOUND
- IPS — 1/2" IRON PIN SET
- MB — MAIL BOX
- OTF — OPEN TOP PIPE FOUND
- PNF — PK NAIL FOUND
- PKS — PK NAIL SET
- RBF — REBAR FOUND
- RMF — RIGHT-OF-WAY MONUMENT FOUND
- RRSB — RAILROAD SIGNAL BOX
- SO — STUB OUT
- BSL — BUILDING SETBACK LINE
- C&G — CURB & CUTTER
- CP — CONCRETE PAD
- CLF — CHAIN LINK FENCE
- CMP — CORRUGATED METAL PIPE
- DB PG — DEED BOOK & PAGE
- DIP — DUCTILE IRON PIPE
- HC — HEADER CURB
- HDPE — HIGH DENSITY POLYETHYLENE PIPE
- INV — INVERT ELEVATION
- OCS — OUTLET CONTROL STRUCTURE
- PB PG — PLAT BOOK & PAGE
- PVC — PLASTIC PIPE
- RCP — REINFORCED CONCRETE PIPE
- TBM — TEMPORARY BENCHMARK

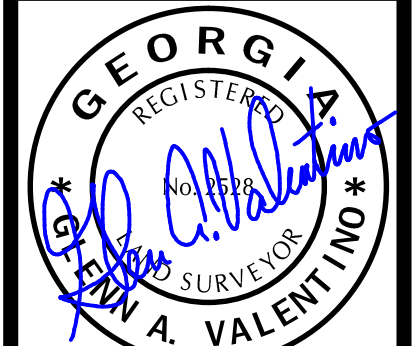


SUBDIVISION PLAT OF:
FT. GILLEM DEVELOPMENT
FOR
THE CITY OF FOREST PARK

VA
VALENTINO & ASSOCIATES, INC.
LAND SURVEYORS
4045 ORCHARD ROAD
BUILDING 200
SMYRNA, GEORGIA 30080
PHONE: (770) 438-0015
FAX: (770) 435-6050
WEB: VALENTINOSURVEY.COM
STATE OF GEORGIA LAND SURVEYING FIRM LICENSE NO. LSF000794

REVISIONS

NO.	DATE	DESCRIPTION



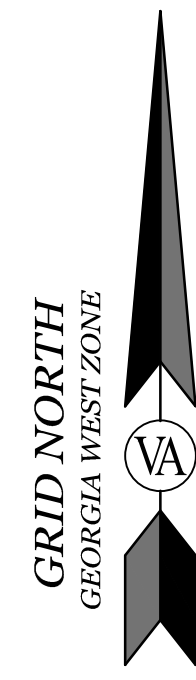
SCALE: 1" = 100'
DATE: 10/20/2022
JOB NUMBER: 15-074
FILE NUMBER: 15-074-SD
PLOTTED: 1/13/2023

FINAL SUBDIVISION PLAT

FOR ALL NOTES SEE SHEET 1

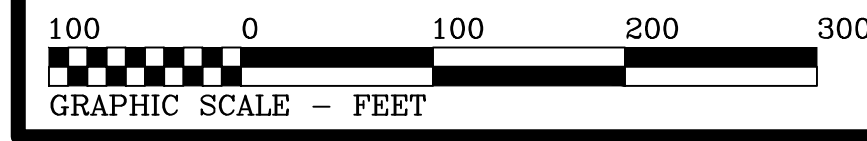
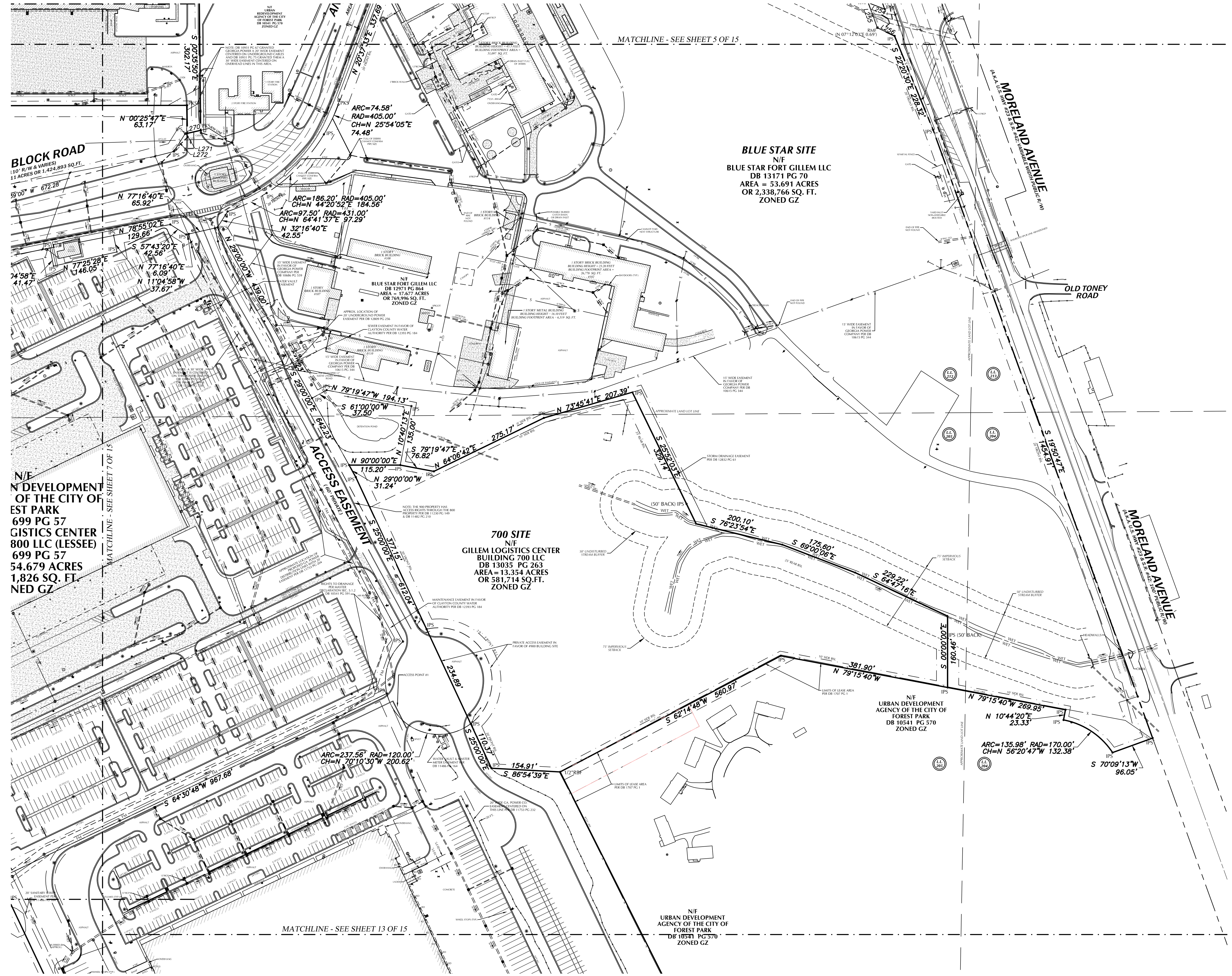
LAND LOTS 178, 179, 204, 205, 206, 207, 210, 211 & 212, 12TH DISTRICT, CITY OF FOREST PARK, CLAYTON COUNTY, GEORGIA

RESERVED FOR CLERK OF COURT



LEGEND

- - - BROKEN LINE NOT TO SCALE
- - - FENCE LINE
- - - GUARDRAIL
- - - UNDERGROUND GAS LINE
- - - OVERHEAD ELECTRIC LINE
- - - OVERHEAD TELEPHONE LINE
- - - SANITARY SEWER LINE
- - - SANITARY SEWER FORCEMAIN LINE
- - - UNDERGROUND ELECTRIC LINE
- - - UNKNOWN UNDERGROUND LINE
- - - UNKNOWN UNDERGROUND UTILITY LINE
- - - WATER LINE
- - - WETLANDS AREA
- - - CATCH BASIN SINGLE WING
- - - CATCH BASIN DOUBLE WING
- - - COMPUTED POINT
- - - BORING HOLE
- - - CLEANOUT
- - - COMMUNICATION BOX
- - - ELECTRIC BOX
- - - ELECTRIC LINE MARKER
- - - ELECTRIC MANHOLE
- - - ELECTRIC METER
- - - ELECTRIC OUTLET
- - - ELECTRIC SWITCH
- - - FIBER OPTIC BOX
- - - FIBER OPTIC LINE MARKER
- - - FIRE HYDRANT
- - - FLARED END SECTION
- - - GAS LINE MARKER
- - - GAS METER
- - - GAS VALVE
- - - GROUND LIGHT
- - - GUY POLE
- - - GUY WIRE
- - - HEADWALL
- - - HEATING/AIR CONDITIONING UNIT
- - - IRRIGATION CONTROL VALVE
- - - LIGHT POLE
- - - POST INDICATOR VALVE
- - - POWER POLE
- - - SANITARY SEWER MANHOLE
- - - SIGN POST
- - - STORM WATER DROP INLET
- - - STORM WATER JUNCTION BOX
- - - STORM WATER YARD INLET
- - - TELEPHONE MANHOLE
- - - TELEPHONE POLE
- - - TRAFFIC SIGNAL BOX
- - - TRAFFIC SIGNAL POLE
- - - WATER MANHOLE
- - - WATER METER
- - - WATER VALVE
- - - WATER VALVE/VALVE MARKER
- - - BOLLARD
- - - CONCRETE MONUMENT FOUND
- - - CRIMPED TOP PIPE FOUND
- - - ELECTRIC PANEL
- - - FINISHED FLOOR ELEVATION
- - - IRRIGATION BOX
- - - IRON PIN FOUND
- - - 1/2" IRON PIN SET
- - - MAIL BOX
- - - OPEN TOP PIPE FOUND
- - - PK NAIL FOUND
- - - PK NAIL SET
- - - REBAR FOUND
- - - RIGHT-OF-WAY MONUMENT FOUND
- - - RAILROAD SIGNAL BOX
- - - STUB OUT
- - - BUILDING SETBACK LINE
- - - CURB & GUTTER
- - - CONCRETE PAD
- - - CHAIN LINK FENCE
- - - CORRUGATED METAL PIPE
- - - DEED BOOK & PAGE
- - - DUCTILE IRON PIPE
- - - HEADER CURB
- - - HIGH DENSITY POLYETHYLENE PIPE
- - - INSERT ELEVATION
- - - OUTLET CONTROL STRUCTURE
- - - PLAT BOOK & PAGE
- - - PLASTIC PIPE
- - - REINFORCED CONCRETE PIPE
- - - TEMPORARY BENCHMARK



FOR ALL NOTES SEE SHEET 1

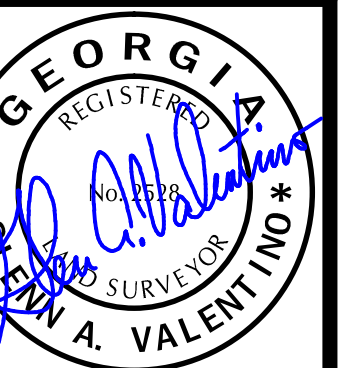
SUBDIVISION PLAT OF:
FT. GILLEM DEVELOPMENT
FOR
THE CITY OF FOREST PARK



VA
VALENTINO &
ASSOCIATES, INC.
LAND SURVEYORS
4045 ORCHARD ROAD
BUILDING 200
SMYRNA, GEORGIA 30080
PHONE: (770) 438-0015
FAX: (770) 435-6050
WEB: VALENTINOSURVEY.COM
STATE OF GEORGIA LAND
SURVEYING FIRM LICENSE
NO. LSF00794

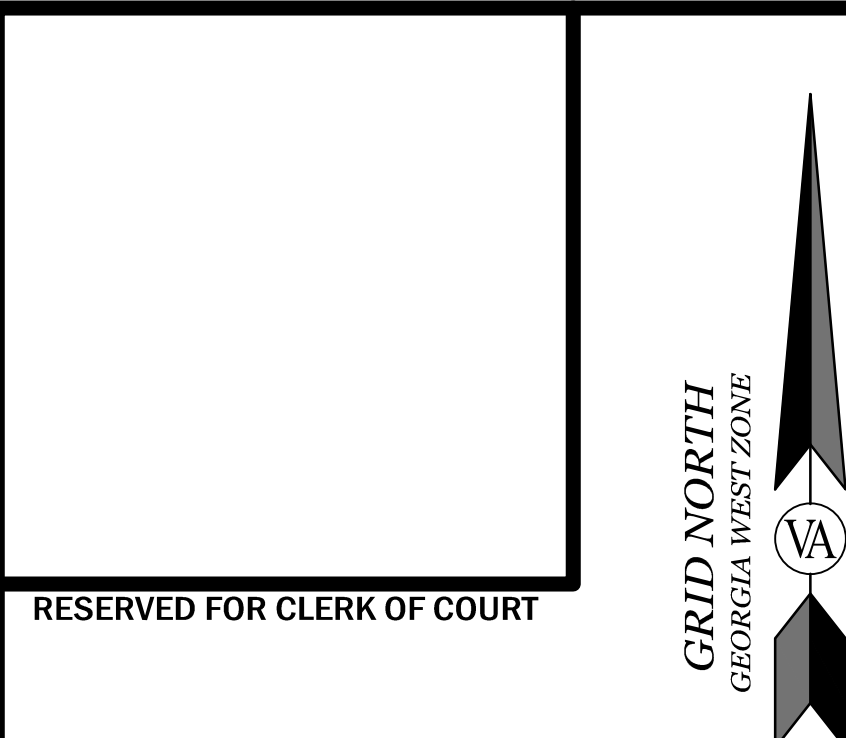
REVISIONS

NO.	DATE	REVISION
1/13/23		ADDRESS COMMENTS



SCALE: 1" = 100'
DATE: 10/20/2022
JOB NUMBER: 15-074
FILE NUMBER: 15-074-SD
PLOTTED: 1/13/2023

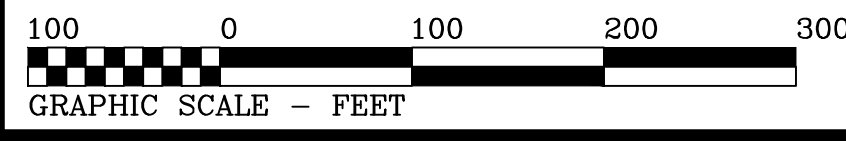
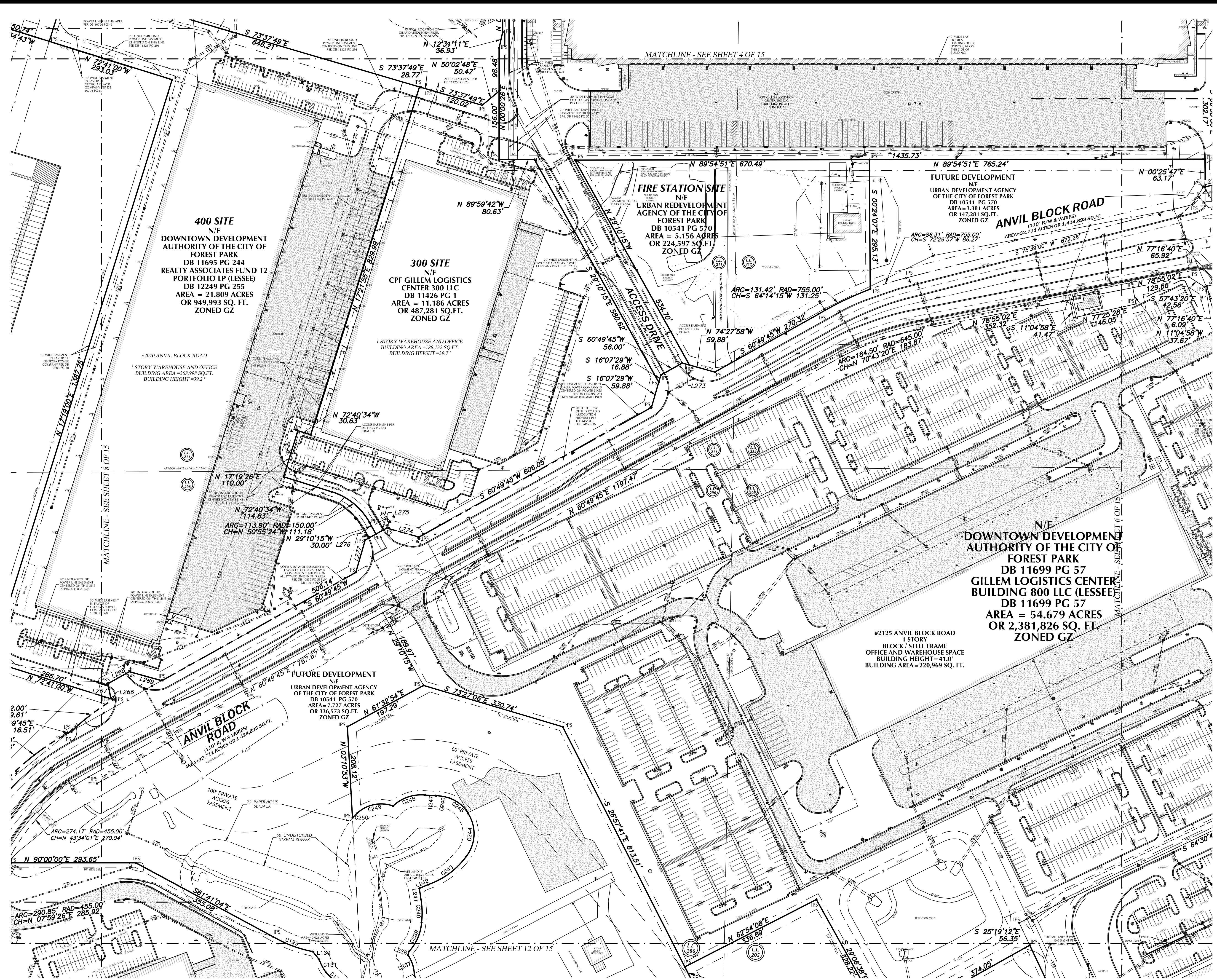
**FINAL
SUBDIVISION
PLAT**



RESERVED FOR CLERK OF COURT

LEGEND

- BROKEN LINE NOT TO SCALE
- - - FENCE LINE
- GUARDRAIL
- UNDERGROUND GAS LINE
- OVERHEAD ELECTRIC LINE
- OVERHEAD TELEPHONE LINE
- SANITARY SEWER LINE
- FM SANITARY SEWER FORCEMAIN LINE
- UNDERGROUND ELECTRIC LINE
- UT UNDERGROUND TELEPHONE LINE
- UNKNOWN UNDERGROUND UTILITY LINE
- WATER LINE
- WET WETLANDS AREA
- ▲ CATCH BASIN SINGLE WING
- ▲ CATCH BASIN DOUBLE WING
- COMPUTED POINT
- BORING HOLE
- CLEANOUT
- COMMUNICATION BOX
- ELECTRIC BOX
- ELECTRIC LINE MARKER
- ELECTRIC MANHOLE
- ELECTRIC METER
- ELECTRIC OUTLET
- ELECTRIC SWITCH
- FIBER OPTIC BOX
- FIBER OPTIC LINE MARKER
- FIRE HYDRANT
- FLARED END SECTION
- GAS LINE MARKER
- GAS METER
- GAS VALVE
- GROUND LIGHT
- GUY POLE
- GUY WIRE
- HEADWALL
- HEATING/AIR CONDITIONING UNIT
- IRRIGATION CONTROL VALVE
- LIGHT POLE
- POST INDICATOR VALVE
- POWER POLE
- SANITARY SEWER MANHOLE
- SIGN POST
- STORM WATER DROP INLET
- STORM WATER JUNCTION BOX
- STORM WATER YARD INLET
- TELEPHONE MANHOLE
- TELEPHONE POLE
- TRAFFIC SIGNAL BOX
- TRAFFIC SIGNAL POLE
- WATER MANHOLE
- WATER METER
- WATER VALVE
- WATER VALVE/VALVE MARKER
- BOLLARD
- CMF CONCRETE MONUMENT FOUND
- CTF CRIMPED TOP PIPE FOUND
- E-PAN ELECTRIC PANEL
- FFE FINISHED FLOOR ELEVATION
- IRB IRRIGATION BOX
- IPF IRON PIN FOUND
- IPS 1/2" IRON PIN SET
- MB MAIL BOX
- OTF OPEN TOP PIPE FOUND
- PKF PK NAIL FOUND
- PKS PK NAIL SET
- RBF REBAR FOUND
- RMF RIGHT-OF-WAY MONUMENT FOUND
- RRSB RAILROAD SIGNAL BOX
- SO STUB OUT
- BSL BUILDING SETBACK LINE
- C&G CURB & GUTTER
- CP CONCRETE PAD
- CLF CHAIN LINK FENCE
- CMP CORRUGATED METAL PIPE
- DB PG DEED BOOK & PAGE
- DIP DUCTILE IRON PIPE
- HC HEADER CURB
- HDPE HIGH DENSITY POLYETHYLENE PIPE
- INV INVERT ELEVATION
- OCS OUTLET CONTROL STRUCTURE
- PB PG PLAT BOOK & PAGE
- PVC PLASTIC PIPE
- RCP REINFORCED CONCRETE PIPE
- TBM TEMPORARY BENCHMARK



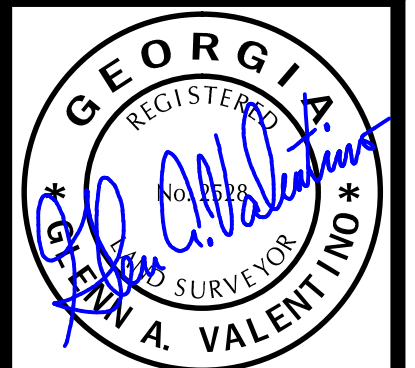
FOR ALL NOTES SEE SHEET 1

SUBDIVISION PLAT OF:
FT. GILLEM DEVELOPMENT
 FOR
THE CITY OF FOREST PARK

VA
 VALENTINO &
 ASSOCIATES, INC.
 LAND SURVEYORS
 4045 ORCHARD ROAD
 BUILDING 200
 SMYRNA, GEORGIA 30080
 PHONE: (770) 438-0015
 FAX: (770) 435-6050
 WEB: VALENTINOSURVEY.COM
 STATE OF GEORGIA LAND
 SURVEYING FIRM LICENSE
 NO. LSF000794

REVISIONS

1/13/23	ADDRESS COMMENTS

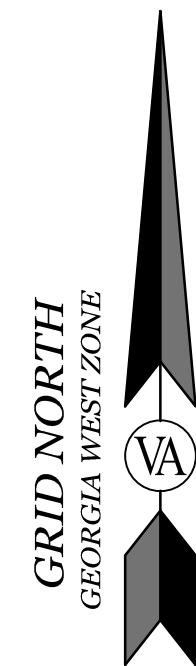


SCALE: 1" = 100'
 DATE: 10/20/2022
 JOB NUMBER: 15-074
 FILE NUMBER: 15-074-SD
 PLOTTED: 1/13/2023

FINAL SUBDIVISION PLAT

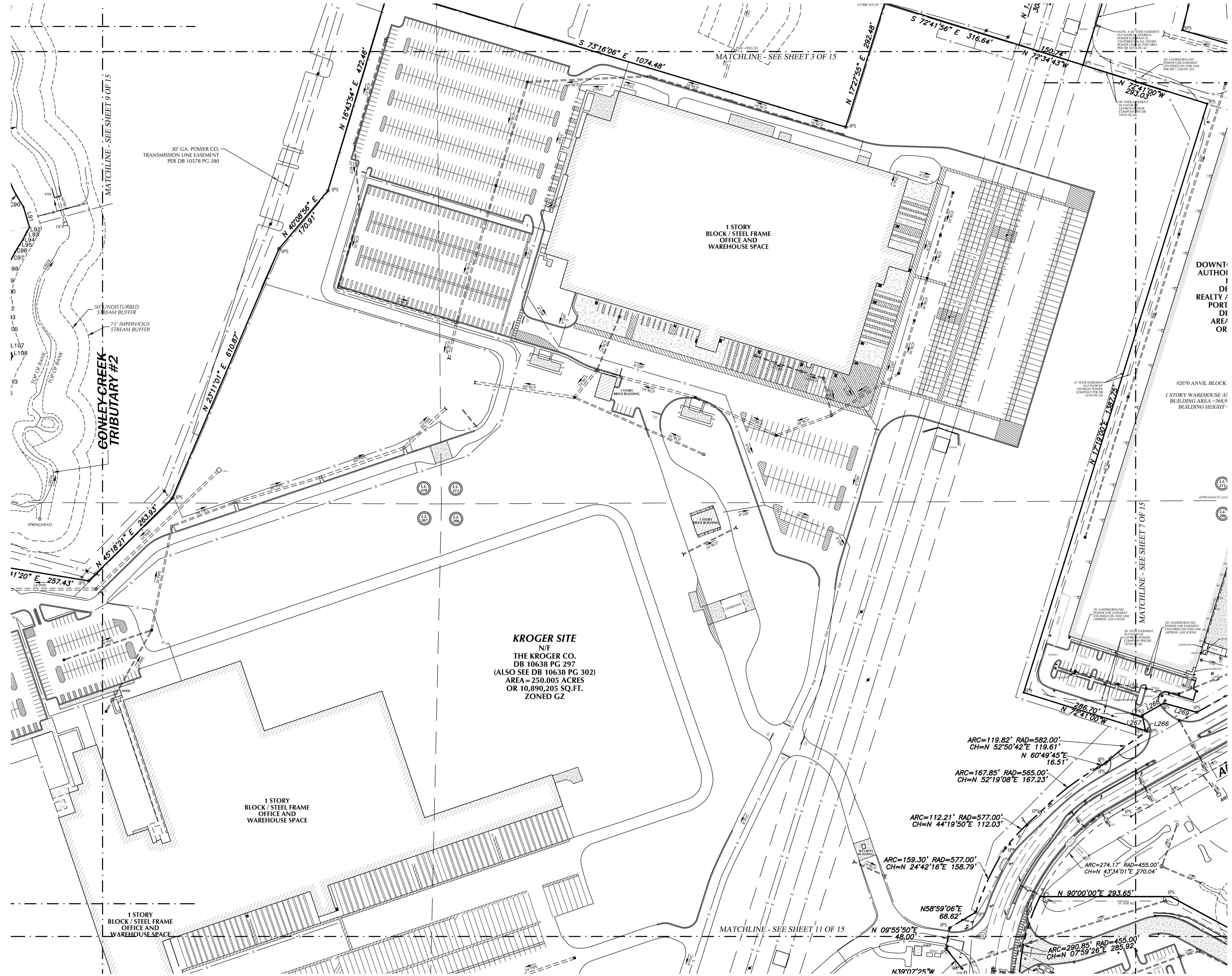
LAND LOTS 178,179,204,205,206,207,210,211 & 212 12TH DISTRICT CITY OF FOREST PARK, CLAYTON COUNTY, GEORGIA

RESERVED FOR CLERK OF COURT



LEGEND

- BROKEN LINE NOT TO SCALE
- FENCE LINE
- GUARDRAIL
- UNDERGROUND GAS LINE
- OVERHEAD ELECTRIC LINE
- OVERHEAD TELEPHONE LINE
- SANITARY SEWER LINE
- FM SANITARY SEWER FORCEMAIN LINE
- UNDERGROUND ELECTRIC LINE
- UNDERGROUND TELEPHONE LINE
- UNKNOWN UNDERGROUND UTILITY LINE
- WATER LINE
- WETLANDS AREA
- CATCH BASIN SINGLE WING
- CATCH BASIN DOUBLE WING
- COMPUTED POINT
- BORING HOLE
- CLEANOUT
- COMMUNICATION BOX
- ELECTRIC BOX
- ELECTRIC LINE MARKER
- ELECTRIC MANHOLE
- ELECTRIC METER
- ELECTRIC OUTLET
- ELECTRIC SWITCH
- FIBER OPTIC BOX
- FIBER OPTIC LINE MARKER
- FIRE HYDRANT
- FLARED END SECTION
- GAS LINE MARKER
- GAS METER
- GAS VALVE
- GROUND LIGHT
- GUY POLE
- GUY WIRE
- HEADWALL
- HEATING/AIR CONDITIONING UNIT
- IRRIGATION CONTROL VALVE
- LIGHT POLE
- POST INDICATOR VALVE
- POWER POLE
- SANITARY SEWER MANHOLE
- SIGN POST
- STORM WATER DROP INLET
- STORM WATER JUNCTION BOX
- STORM WATER YARD INLET
- TELEPHONE MANHOLE
- TELEPHONE POLE
- TRAFFIC SIGNAL BOX
- TRAFFIC SIGNAL POLE
- WATER MANHOLE
- WATER METER
- WATER VALVE
- WATER VALVE LINE MARKER
- BOLLARD
- CMF CONCRETE MONUMENT FOUND
- CTF CRIMPED TOP PIPE FOUND
- E-PAN ELECTRIC PANEL
- FFE FINISHED FLOOR ELEVATION
- IRB IRRIGATION BOX
- IPF IRON PIN FOUND
- IPS 1/2" IRON PIN SET
- MB MAIL BOX
- OTF OPEN TOP PIPE FOUND
- PKF PK NAIL FOUND
- PKS PK NAIL SET
- RBF REBAR FOUND
- RMF RIGHT-OF-WAY MONUMENT FOUND
- RRSB RAILROAD SIGNAL BOX
- SO STUB OUT
- BSL BUILDING SETBACK LINE
- C&G CURB & GUTTER
- CP CONCRETE PAD
- CLF CHAIN LINK FENCE
- CMP CORRUGATED METAL PIPE
- DB PG DEED BOOK & PAGE
- DIP DUCTILE IRON PIPE
- HC HEADER CURB
- HDPE HIGH DENSITY POLYETHYLENE PIPE
- INV INVERT ELEVATION
- OCS OUTLET CONTROL STRUCTURE
- PB PG PLAT BOOK & PAGE
- PVC PLASTIC PIPE
- RCP REINFORCED CONCRETE PIPE
- TBM TEMPORARY BENCHMARK



SUBDIVISION PLAT OF:
FT. GILLEM DEVELOPMENT
 FOR
THE CITY OF FOREST PARK

VA
 VALENTINO & ASSOCIATES, INC.
 LAND SURVEYORS
 4045 ORCHARD ROAD
 BUILDING 200
 SMYRNA, GEORGIA 30080
 PHONE: (770) 438-0015
 FAX: (770) 435-6050
 WEB: VALENTINOSURVEY.COM
 STATE OF GEORGIA LAND SURVEYING FIRM LICENSE NO. LSF000794

REVISIONS

NO.	DATE	DESCRIPTION
1/13/23		ADDRESS COMMENTS



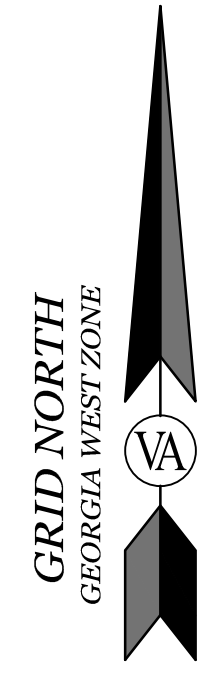
SCALE: 1" = 100'
 DATE: 10/20/2022
 JOB NUMBER: 15-074
 FILE NUMBER: 15-074-SD
 PLOTTED: 1/13/2023

FINAL SUBDIVISION PLAT

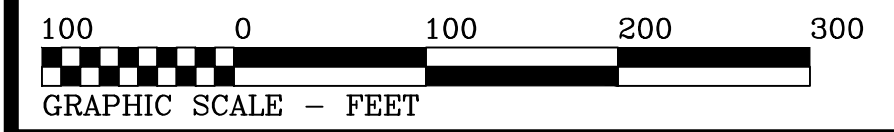
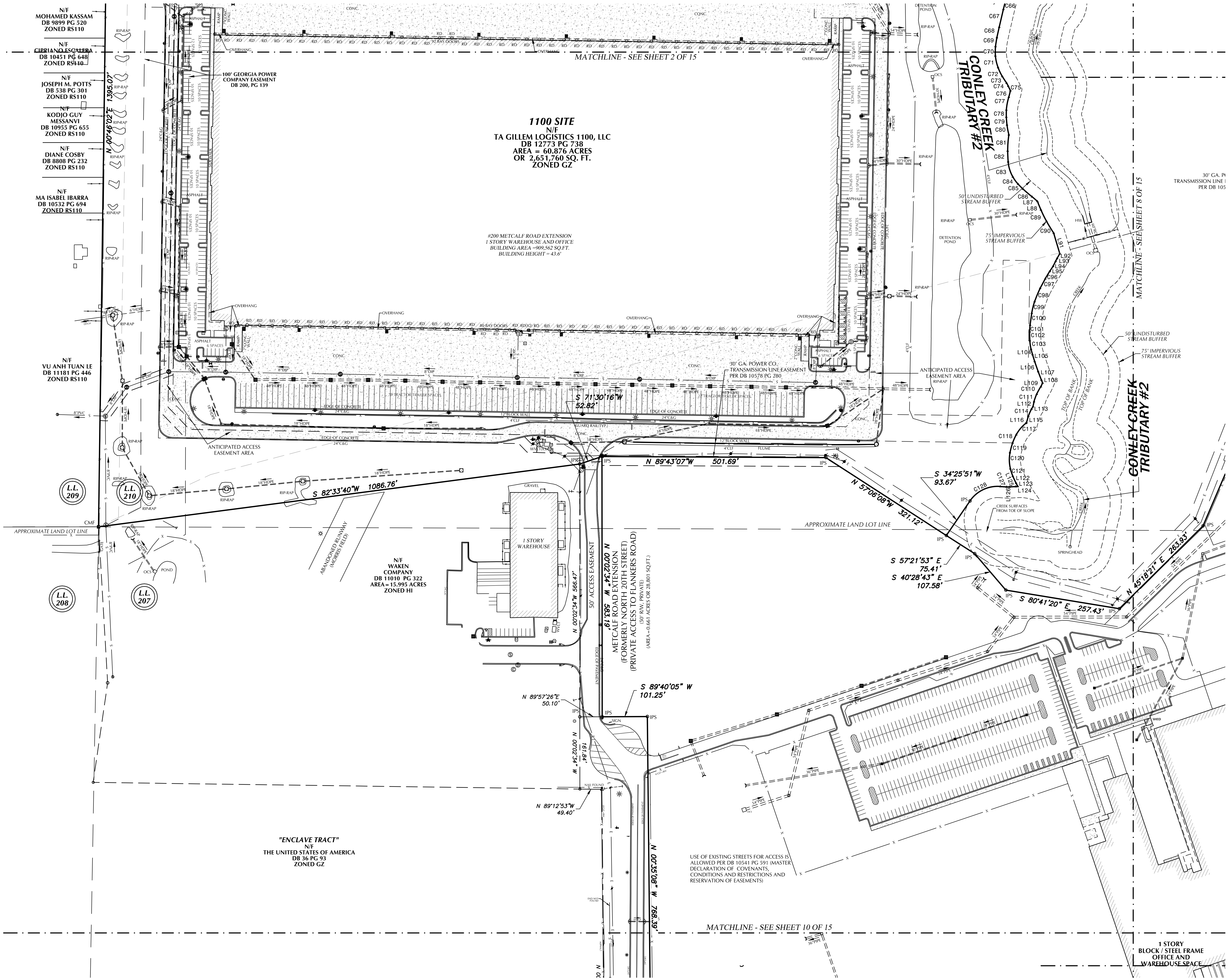
FOR ALL NOTES SEE SHEET 1

LAND LOTS 178,179,204,205,206,207,210,211 & 212 12TH DISTRICT CITY OF FOREST PARK, CLAYTON COUNTY, GEORGIA

RESERVED FOR CLERK OF COURT



LEGEND	
---	BROKEN LINE NOT TO SCALE
-X-	FENCE LINE
-G-	GUARDRAIL
-U-	UNDERGROUND GAS LINE
-E-	OVERHEAD ELECTRIC LINE
-T-	OVERHEAD TELEPHONE LINE
-S-	SANITARY SEWER LINE
-FM-	SANITARY SEWER FORCEMAIN LINE
-UE-	UNDERGROUND ELECTRIC LINE
-UT-	UNDERGROUND TELEPHONE LINE
-UNK-	UNKNOWN UNDERGROUND UTILITY LINE
-W-	WATER LINE
-WET-	WETLANDS AREA
-A-	CATCH BASIN SINGLE WING
-B-	CATCH BASIN DOUBLE WING
-C-	COMPUTED POINT
-H-	BORING HOLE
-C-	CLEANOUT
-CB-	COMMUNICATION BOX
-EB-	ELECTRIC BOX
-ELM-	ELECTRIC LINE MARKER
-EMH-	ELECTRIC MANHOLE
-EM-	ELECTRIC METER
-EO-	ELECTRIC OUTLET
-ES-	ELECTRIC SWITCH
-FOLM-	FIBER OPTIC BOX
-FOLM-	FIBER OPTIC LINE MARKER
-FH-	FIRE HYDRANT
-FES-	FLARED END SECTION
-GLM-	GAS LINE MARKER
-GM-	GAS METER
-GV-	GAS VALVE
-GL-	GROUND LIGHT
-GP-	GUY POLE
-GW-	GUY WIRE
-HW-	HEADWALL
-HAU-	HEATING/AIR CONDITIONING UNIT
-ICV-	IRRIGATION CONTROL VALVE
-LFL-	LIGHT POLE
-PIV-	POST INDICATOR VALVE
-PP-	POWER POLE
-SSM-	SANITARY SEWER MANHOLE
-SP-	SIGN POST
-SWDI-	STORM WATER DROP INLET
-SWJIB-	STORM WATER JUNCTION BOX
-SWYI-	STORM WATER YARD INLET
-TMH-	TELEPHONE MANHOLE
-TP-	TELEPHONE POLE
-TSB-	TRAFFIC SIGNAL BOX
-TSP-	TRAFFIC SIGNAL POLE
-WM-	WATER MANHOLE
-WM-	WATER METER
-WV-	WATER VALVE
-WVLM-	WATER VALVE LINE MARKER
-B-	BOLLARD
-CMF-	CONCRETE MONUMENT FOUND
-CTF-	CRIMPED TOP PIPE FOUND
-E-PAN-	ELECTRIC PANEL
-FFE-	FINISHED FLOOR ELEVATION
-IRB-	IRRIGATION BOX
-IPF-	IRON PIN FOUND
-IPS-	1/2" IRON PIN SET
-MB-	MAIL BOX
-OTF-	OPEN TOP PIPE FOUND
-PKF-	PK NAIL FOUND
-PKS-	PK NAIL SET
-RBF-	REBAR FOUND
-RMF-	RIGHT-OF-WAY MONUMENT FOUND
-RRSB-	RAILROAD SIGNAL BOX
-SO-	STUB OUT
-BSL-	BUILDING SETBACK LINE
-C&G-	CURB & GUTTER
-CP-	CONCRETE PAD
-CLF-	CHAIN LINK FENCE
-CMP-	CORRUGATED METAL PIPE
-DB PG-	DEED BOOK & PAGE
-DIP-	DUCTILE IRON PIPE
-HC-	HEADER CURB
-HDPE-	HIGH DENSITY POLYETHYLENE PIPE
-INV-	INVERT ELEVATION
-OCS-	OUTLET CONTROL STRUCTURE
-PB PG-	PLAT BOOK & PAGE
-PVC-	PLASTIC PIPE
-RCP-	REINFORCED CONCRETE PIPE
-TBM-	TEMPORARY BENCHMARK



FOR ALL NOTES SEE SHEET 1

SUBDIVISION PLAT OF:
FT. GILLEM DEVELOPMENT
 FOR
THE CITY OF FOREST PARK

VA
VALENTINO & ASSOCIATES, INC.
 LAND SURVEYORS
 4045 ORCHARD ROAD
 BUILDING 200
 SMYRNA, GEORGIA 30080
 PHONE: (770) 438-0015
 FAX: (770) 435-6050
 WEB: VALENTINOSURVEY.COM
 STATE OF GEORGIA LAND SURVEYING FIRM LICENSE NO. LS#000794

REVISIONS	
1/13/23	ADDRESS COMMENTS

SCALE: 1" = 100'
 DATE: 10/20/2022
 JOB NUMBER: 15-074
 FILE NUMBER: 15-074-SD
 PLOTTED: 1/13/2023

FINAL SUBDIVISION PLAT

SHEET 9 OF 14

LAND LOTS 178,179,204,205,206,207,210,211 & 212 12TH DISTRICT CITY OF FOREST PARK, CLAYTON COUNTY, GEORGIA

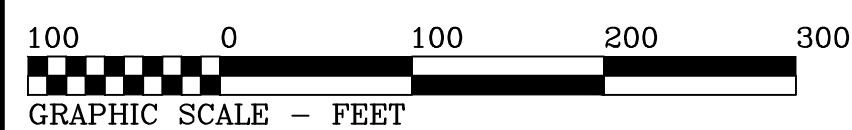
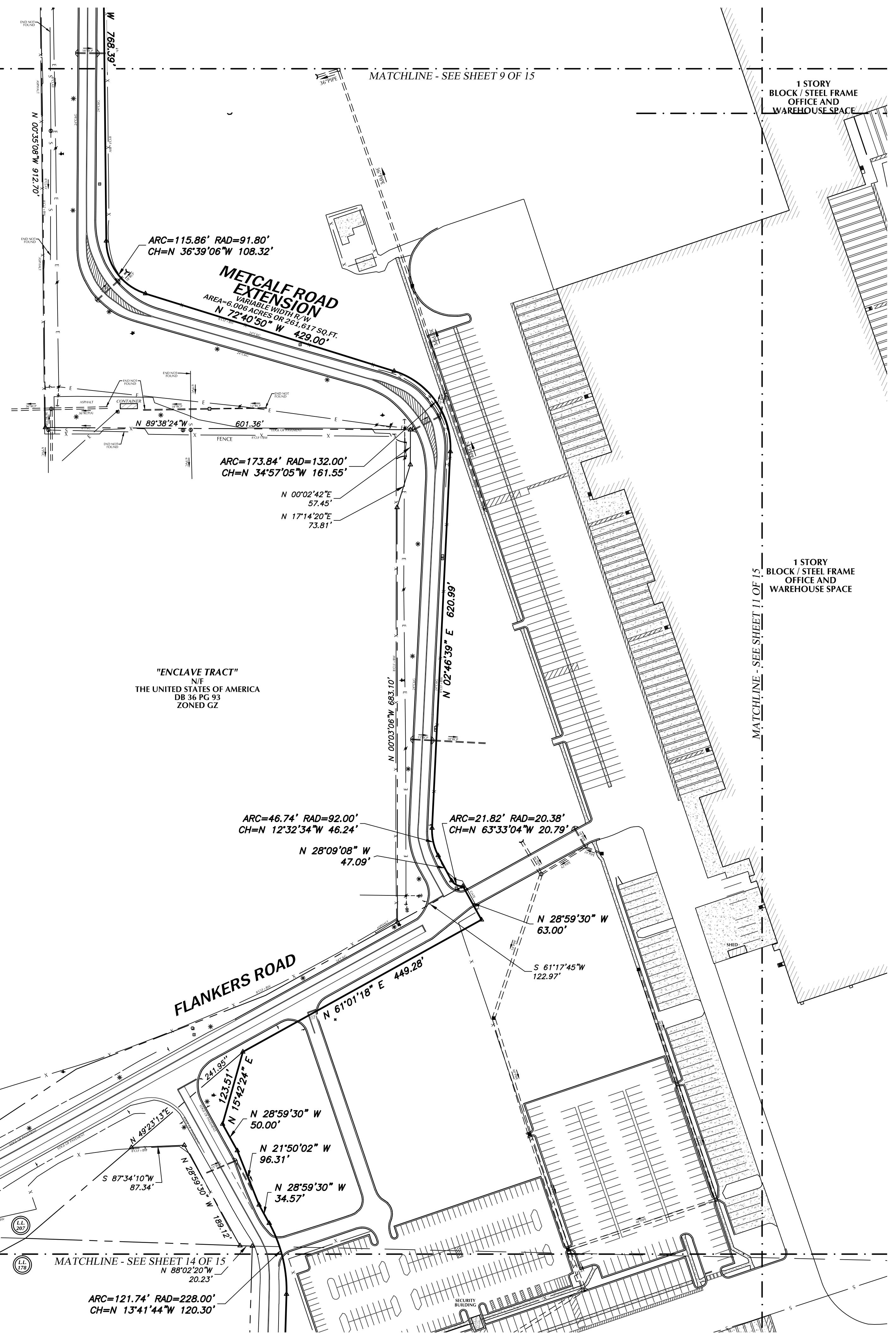
RESERVED FOR CLERK OF COURT

GRID NORTH
GEORGIA WEST ZONE



LEGEND

- BROKEN LINE NOT TO SCALE
- FENCE LINE
- GUARDRAIL
- UNDERGROUND GAS LINE
- OVERHEAD ELECTRIC LINE
- OVERHEAD TELEPHONE LINE
- SANITARY SEWER LINE
- SANITARY SEWER FORCE MAIN LINE
- UNDERGROUND ELECTRIC LINE
- UNDERGROUND TELEPHONE LINE
- UNKNOWN UNDERGROUND UTILITY LINE
- WATER LINE
- WETLANDS AREA
- CATCH BASIN SINGLE WING
- CATCH BASIN DOUBLE WING
- COMPUTED POINT
- BORING HOLE
- CLEANOUT
- COMMUNICATION BOX
- ELECTRIC BOX
- ELECTRIC LINE MARKER
- ELECTRIC MANHOLE
- ELECTRIC METER
- ELECTRIC OUTLET
- ELECTRIC SWITCH
- FIBER OPTIC BOX
- FIBER OPTIC LINE MARKER
- FIRE HYDRANT
- FLARED END SECTION
- GAS LINE MARKER
- GAS METER
- GAS VALVE
- GROUND LIGHT
- GUY POLE
- GUY WIRE
- HEADWALL
- HEATING/AIR CONDITIONING UNIT
- IRRIGATION CONTROL VALVE
- LIGHT POLE
- POST INDICATOR VALVE
- POWER POLE
- SANITARY SEWER MANHOLE
- SIGN POST
- STORM WATER DROP INLET
- STORM WATER JUNCTION BOX
- STORM WATER YARD INLET
- TELEPHONE MANHOLE
- TELEPHONE POLE
- TRAFFIC SIGNAL BOX
- TRAFFIC SIGNAL POLE
- WATER MANHOLE
- WATER METER
- WATER VALVE
- WATER VALVE LINE MARKER
- BOLLARD
- CONCRETE MONUMENT FOUND
- CRIMPED TOP PIPE FOUND
- ELECTRIC PANEL
- FINISHED FLOOR ELEVATION
- IRRIGATION BOX
- IRON PIN FOUND
-

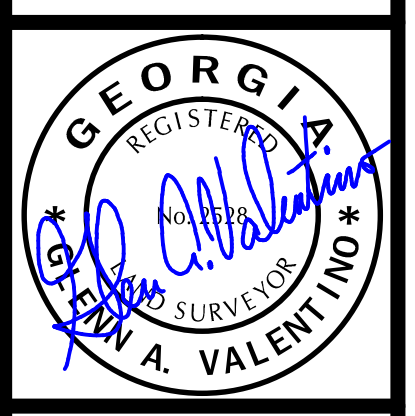


SUBDIVISION PLAT OF:
FT. GILLEM DEVELOPMENT
FOR
THE CITY OF FOREST PARK

LAND LOTS 178,179,204,205,206,207,210,211 & 212, 12TH DISTRICT, CITY OF FOREST PARK, CLAYTON COUNTY, GEORGIA

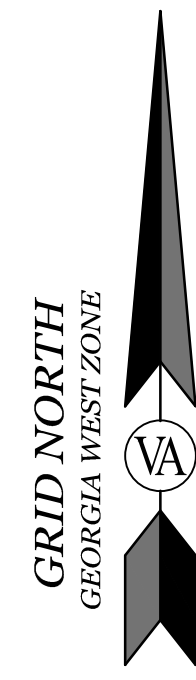
VA
VALENTINO & ASSOCIATES, INC.
LAND SURVEYORS
4045 ORCHARD ROAD
BUILDING 200
SMYRNA, GEORGIA 30080
PHONE: (770) 438-0015
FAX: (770) 435-6050
WEB: VALENTINOSURVEY.COM
STATE OF GEORGIA LAND SURVEYING FIRM LICENSE NO. LSF000794

REVISIONS		
NO.	DATE	DESCRIPTION
1	1/13/23	ADDRESS COMMENTS



SCALE: 1" = 100'
DATE: 10/20/2022
JOB NUMBER: 15-074
FILE NUMBER: 15-074-SD
PLOTTED: 1/13/2023

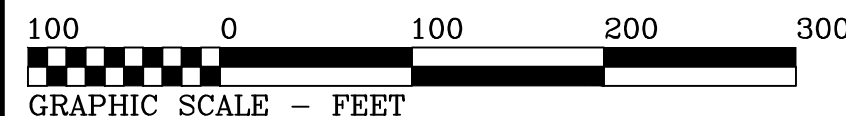
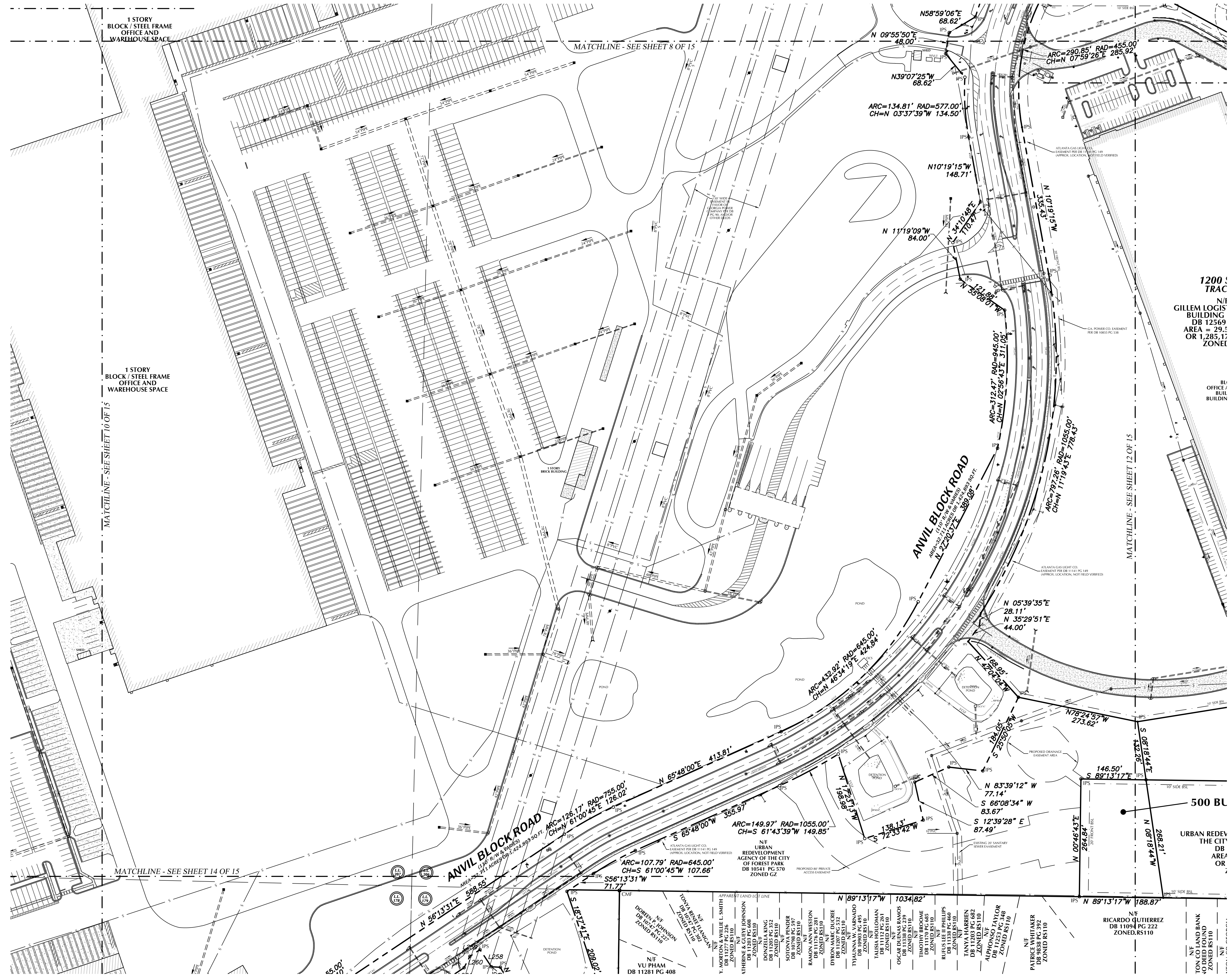
FINAL SUBDIVISION PLAT
SHEET
10 OF 14



RESERVED FOR CLERK OF COURT

LEGEND

- BROKEN LINE NOT TO SCALE
- - - FENCE LINE
- - - GUARDRAIL
- - - UNDERGROUND GAS LINE
- - - OVERHEAD ELECTRIC LINE
- - - OVERHEAD TELEPHONE LINE
- - - SANITARY SEWER LINE
- - - SANITARY SEWER FORCEMAIN LINE
- - - UNDERGROUND ELECTRIC LINE
- - - UNDERGROUND TELEPHONE LINE
- - - UNKNOWN UNDERGROUND UTILITY LINE
- - - WATER LINE
- - - WETLANDS AREA
- - - CATCH BASIN SINGLE WING
- - - CATCH BASIN DOUBLE WING
- - - COMPUTED POINT
- - - BORING HOLE
- - - CLEANOUT
- - - COMMUNICATION BOX
- - - ELECTRIC BOX
- - - ELECTRIC LINE MARKER
- - - ELECTRIC MANHOLE
- - - ELECTRIC METER
- - - ELECTRIC OUTLET
- - - ELECTRIC SWITCH
- - - FIBER OPTIC BOX
- - - FIBER OPTIC LINE MARKER
- - - FIRE HYDRANT
- - - FLARED END SECTION
- - - GAS LINE MARKER
- - - GAS METER
- - - GAS VALVE
- - - GROUND LIGHT
- - - GUY POLE
- - - GUY WIRE
- - - HEADWALL
- - - HEATING/AIR CONDITIONING UNIT
- - - IRRIGATION CONTROL VALVE
- - - LIGHT POLE
- - - POST INDICATOR VALVE
- - - POWER POLE
- - - SANITARY SEWER MANHOLE
- - - SIGN POST
- - - STORM WATER DROP INLET
- - - STORM WATER JUNCTION BOX
- - - STORM WATER YARD INLET
- - - TELEPHONE MANHOLE
- - - TELEPHONE POLE
- - - TRAFFIC SIGNAL BOX
- - - TRAFFIC SIGNAL POLE
- - - WATER MANHOLE
- - - WATER METER
- - - WATER VALVE
- - - WATER VALVE LINE MARKER
- - - BOLLARD
- - - CONCRETE MONUMENT FOUND
- - - CRIMPED TOP PIPE FOUND
- - - E-PAN
- - - FINISHED FLOOR ELEVATION
- - - IRRIGATION BOX
- - - IRON PIN FOUND
- - - 1/2" IRON PIN SET
- - - MAIL BOX
- - - OPEN TOP PIPE FOUND
- - - PK NAIL FOUND
- - - PK NAIL SET
- - - REBAR FOUND
- - - RIGHT-OF-WAY MONUMENT FOUND
- - - RRSB
- - - RAILROAD SIGNAL BOX
- - - STUB OUT
- - - SO
- - - BSL
- - - BUILDING SETBACK LINE
- - - C&G
- - - CURB & GUTTER
- - - CP
- - - CONCRETE PAD
- - - CHAIN LINK FENCE
- - - CMP
- - - CORRUGATED METAL PIPE
- - - DB PG
- - - DEED BOOK & PAGE
- - - DHP
- - - DUCTILE IRON PIPE
- - - HC
- - - HEADER CURB
- - - HDPE
- - - HIGH DENSITY POLYETHYLENE PIPE
- - - INV
- - - INSERT ELEVATION
- - - OCS
- - - OUTLET CONTROL STRUCTURE
- - - PB PG
- - - PLAT BOOK & PAGE
- - - PVC
- - - PLASTIC PIPE
- - - RCP
- - - REINFORCED CONCRETE PIPE
- - - TBM
- - - TEMPORARY BENCHMARK



SUBDIVISION PLAT OF:
FT. GILLEM DEVELOPMENT
FOR
THE CITY OF FOREST PARK

VA
VALENTINO & ASSOCIATES, INC.
LAND SURVEYORS
4045 ORCHARD ROAD
BUILDING 200
SMYRNA, GEORGIA 30080
PHONE: (770) 438-0015
FAX: (770) 435-6050
WEB: VALENTINOSURVEY.COM
STATE OF GEORGIA LAND SURVEYING FIRM LICENSE NO. LSF000794

REVISIONS

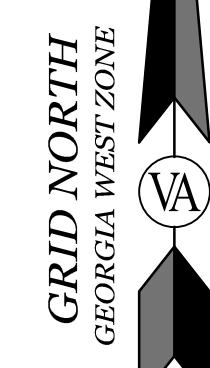
NO.	DATE	DESCRIPTION
1/13/23	ADDRESS COMMENTS	

SCALE: 1" = 100'
DATE: 10/20/2022
JOB NUMBER: 15-074
FILE NUMBER: 15-074-SD
PLOTTED: 1/13/2023

FINAL SUBDIVISION PLAT

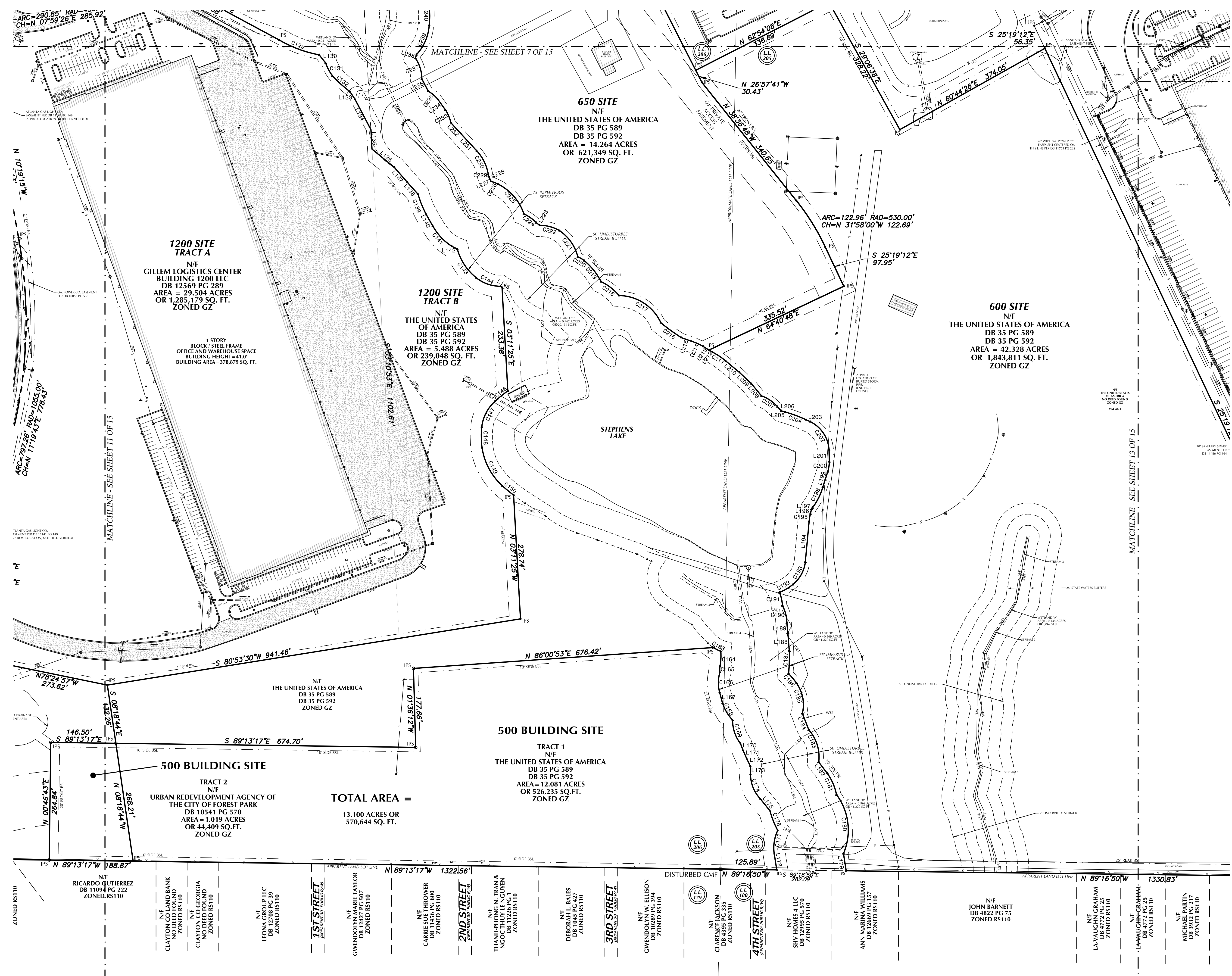
FOR ALL NOTES SEE SHEET 1

RESERVED FOR CLERK OF COURT



LEGEND

- BROKEN LINE NOT TO SCALE
- FENCE LINE
- GUARDRAIL
- UNDERGROUND GAS LINE
- OVERHEAD ELECTRIC LINE
- OVERHEAD TELEPHONE LINE
- SANITARY SEWER LINE
- FM SANITARY SEWER FORCMAIN LINE
- UNDERGROUND ELECTRIC LINE
- UT UNDERGROUND TELEPHONE LINE
- UNK UNKNOWN UNDERGROUND UTILITY LINE
- WATER LINE
- WET WETLANDS AREA
- ▲ CATCH BASIN SINGLE WING
- ▲ CATCH BASIN DOUBLE WING
- COMPUTED POINT
- BORING HOLE
- CLEANOUT
- COMMUNICATION BOX
- ELECTRIC BOX
- ELECTRIC LINE MARKER
- ELECTRIC MANHOLE
- ELECTRIC METER
- ELECTRIC OUTLET
- ELECTRIC SWITCH
- FIBER OPTIC BOX
- FIBER OPTIC LINE MARKER
- FIRE HYDRANT
- FLARED END SECTION
- GAS LINE MARKER
- GAS METER
- GAS VALVE
- GROUND LIGHT
- GUY POLE
- GUY WIRE
- HEADWALL
- HEATING/AIR CONDITIONING UNIT
- IRRIGATION CONTROL VALVE
- LIGHT POLE
- POST INDICATOR VALVE
- POWER POLE
- SANITARY SEWER MANHOLE
- SIGN POST
- STORM WATER DROP INLET
- STORM WATER JUNCTION BOX
- STORM WATER YARD INLET
- TELEPHONE MANHOLE
- TELEPHONE POLE
- TRAFFIC SIGNAL BOX
- TRAFFIC SIGNAL POLE
- WATER MANHOLE
- WATER METER
- WATER VALVE
- WATER VALVE LINE MARKER
- BOLLARD
- CMF CONCRETE MONUMENT FOUND
- CTF CRIMPED TOP PIPE FOUND
- E-PAN ELECTRIC PANEL
- FFE FINISHED FLOOR ELEVATION
- IRB IRRIGATION BOX
- IPF IRON PIN FOUND
- IPS 1/2" IRON PIN SET
- MB MAIL BOX
- OTF OPEN TOP PIPE FOUND
- PKF PK NAIL FOUND
- PKS PK NAIL SET
- RBF REBAR FOUND
- RMF RIGHT-OF-WAY MONUMENT FOUND
- RRSB RAILROAD SIGNAL BOX
- SO STUB OUT
- BSL BUILDING SETBACK LINE
- C&G CURB & GUTTER
- CP CONCRETE PAD
- CLF CHAIN LINK FENCE
- CMP CORRUGATED METAL PIPE
- DB PG DEED BOOK & PAGE
- DHP DUCTILE IRON PIPE
- HC HEADER CURB
- HDPE HIGH DENSITY POLYETHYLENE PIPE
- INV INVERT ELEVATION
- OCS OUTLET CONTROL STRUCTURE
- PB PG PLAT BOOK & PAGE
- PVC PLASTIC PIPE
- RCP REINFORCED CONCRETE PIPE
- TBM TEMPORARY BENCHMARK



SUBDIVISION PLAT OF:
FT. GILLEM DEVELOPMENT
FOR
THE CITY OF FOREST PARK

VA
VALENTINO & ASSOCIATES, INC.
LAND SURVEYORS
4045 ORCHARD ROAD
BUILDING 200
SMYRNA, GEORGIA 30080
PHONE: (770) 438-0015
FAX: (770) 435-6050
WEB: VALENTINOSURVEY.COM
STATE OF GEORGIA LAND SURVEYING FIRM LICENSE NO. LSF000794

REVISIONS

NO.	DATE	DESCRIPTION
1/13/23		ADDRESS COMMENTS

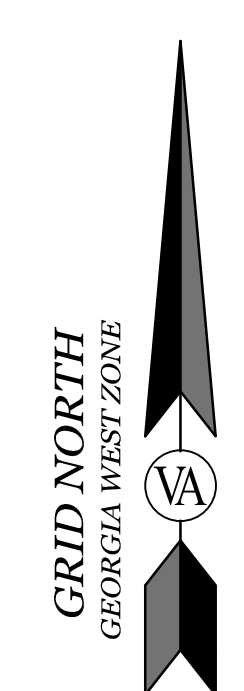


SCALE: 1" = 100'
DATE: 10/20/2022
JOB NUMBER: 15-074
FILE NUMBER: 15-074-SD
PLOTTED: 1/13/2023

FINAL SUBDIVISION PLAT

FOR ALL NOTES SEE SHEET 1

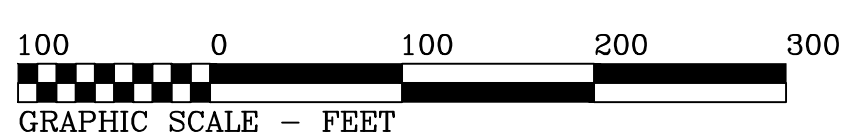
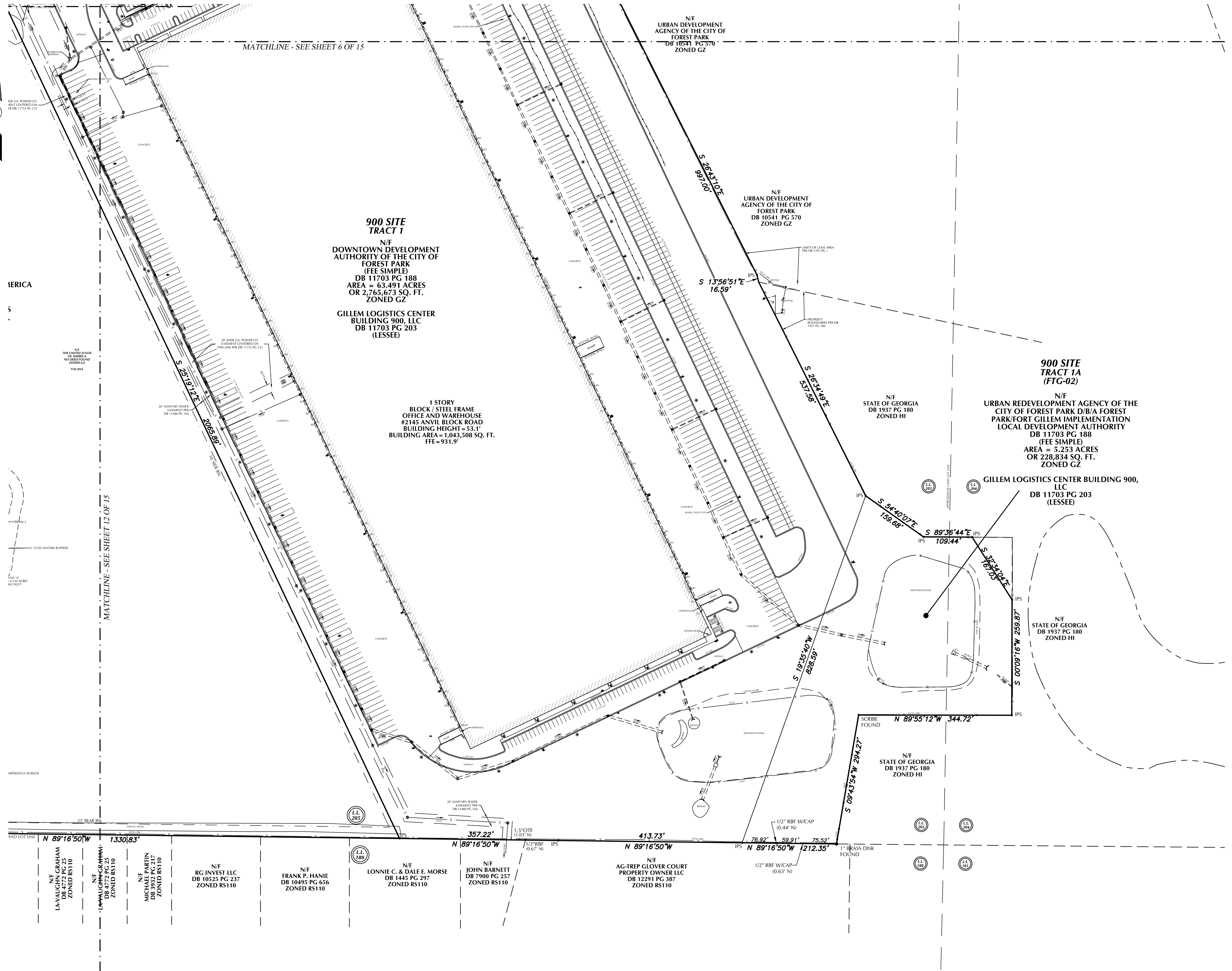
LAND LOTS 178,179,204,205,206,207,210,211 & 212 12TH DISTRICT CITY OF FOREST PARK, CLAYTON COUNTY, GEORGIA



RESERVED FOR CLERK OF COURT

LEGEND

- BROKEN LINE NOT TO SCALE
- FENCE LINE
- GUARDRAIL
- UNDERGROUND GAS LINE
- OVERHEAD ELECTRIC LINE
- OVERHEAD TELEPHONE LINE
- SANITARY SEWER LINE
- FM SANITARY SEWER FORCEMAIN LINE
- UG UNDERGROUND ELECTRIC LINE
- UT UNDERGROUND TELEPHONE LINE
- LNK UNKNOWN UNDERGROUND UTILITY LINE
- W WATER LINE
- WET WETLANDS AREA
- ▲ CATCH BASIN SINGLE WING
- ▲ CATCH BASIN DOUBLE WING
- COMPLETED POINT
- BORING HOLE
- CLEANOUT
- COMMUNICATION BOX
- ELECTRIC BOX
- ELECTRIC LINE MARKER
- ELECTRIC MANHOLE
- ELECTRIC METER
- ELECTRIC OUTLET
- ELECTRIC SWITCH
- FIBER OPTIC BOX
- FIBER OPTIC LINE MARKER
- FIRE HYDRANT
- FLARED END SECTION
- GAS LINE MARKER
- GAS METER
- GAS VALVE
- GROUND LIGHT
- GUY POLE
- GUY WIRE
- HEADWALL
- HEATING/AC CONDITIONING UNIT
- IRRIGATION CONTROL VALVE
- LIGHT POLE
- POST INDICATOR VALVE
- POWER POLE
- SANITARY SEWER MANHOLE
- SIGN POST
- STORM WATER DROP INLET
- STORM WATER JUNCTION BOX
- STORM WATER YARD INLET
- TELEPHONE MANHOLE
- TELEPHONE POLE
- TRAFFIC SIGNAL BOX
- TRAFFIC SIGNAL POLE
- WATER MANHOLE
- WATER METER
- WATER VALVE
- WATER VALVE/LINE MARKER
- BO BOLLARD
- CMF CONCRETE MONUMENT FOUND
- CTF CRIMPED TOP PIPE FOUND
- EPAN ELECTRIC PANEL
- FFE FINISHED FLOOR ELEVATION
- IRB IRRIGATION BOX
- IPF IRON PIN FOUND
- IPS 1/2" IRON PIN SET
- MB MAIL BOX
- OTF OPEN TOP PIPE FOUND
- PNF PK NAIL FOUND
- PFS PK NAIL SET
- RBF REBAR FOUND
- RMF RIGHT-OF-WAY MONUMENT FOUND
- RRSB RAILROAD SIGNAL BOX
- SO STUB OUT
- BSL BUILDING SETBACK LINE
- C&G CURB & CUTTER
- CP CONCRETE PAD
- CLF CHAIN LINK FENCE
- CMP CORRUGATED METAL PIPE
- DB PG DEED BOOK & PAGE
- DIP DUCTILE IRON PIPE
- HC HEADER CURB
- HDPE HIGH DENSITY POLYETHYLENE PIPE
- INV INVERT ELEVATION
- OCS OUTLET CONTROL STRUCTURE
- PB PG PLAT BOOK & PAGE
- PVC PLASTIC PIPE
- RCP REINFORCED CONCRETE PIPE
- TBM TEMPORARY BENCHMARK



FOR ALL NOTES SEE SHEET 1

SUBDIVISION PLAT OF:
FT. GILLEM DEVELOPMENT
FOR
THE CITY OF FOREST PARK

VA

VALENTINO & ASSOCIATES, INC.
LAND SURVEYORS
4045 ORCHARD ROAD
BUILDING 200
SMYRNA, GEORGIA 30080
PHONE: (770) 438-0015
FAX: (770) 435-6050
WEB: VALENTINOSURVEY.COM
STATE OF GEORGIA LAND SURVEYING FIRM LICENSE NO. LSF000794

REVISIONS

NO.	DATE	DESCRIPTION
1/13/23		ADDRESS COMMENTS



SCALE: 1" = 100'
DATE: 10/20/2022
JOB NUMBER: 15-074
FILE NUMBER: 15-074-SD
PLOTTED: 1/13/2023

FINAL SUBDIVISION PLAT

CALL TABLES

RESERVED FOR CLERK OF COURT

ACREAGE & MAP CHECK CHART

SITE	ACREAGE	SQUARE FT.	CLOSURE
100	24.087	1,049,227	386,086
150	98.364	4,284,743	1,552,158
200	48.955	2,132,485	425,676
300	11.186	487,281	600,255
400	21.809	949,993	467,536
500	14.650	638,157	312,189
600	42.328	1,843,811	417,436
650	14.264	621,349	392,621
700	13.354	581,714	526,990
800	54.679	2,381,826	224,888
900	63.491	2,765,673	691,892
1000	72.862	3,173,888	545,896
1100	60.876	2,651,760	1,770,673
1200 (TRACT A)	29.504	1,285,179	524,034
1200 (TRACT B)	5.488	239,048	346,269
FIRE STATION	5.156	224,597	308,478
BLUE STAR	53.691	2,338,766	284,472
KROGER	250.006	10,890,205	224,888
ANVIL BLOCK ROAD	32.711	1,424,893	1,091,484
METCALF ROAD	2.379	103,625	318,856
METCALF ROAD EXTENSION	6.667	290,418	1,442,263
TOTAL	926.507	40,358,638	

1400 SITE

Course	Bearing	Distance
L1	S 41°53'20" W	53.80'
C2	Rod: 113.03	ARC: 18.07'
	Chd: S 37°13'03" W	16.05'
L3	S 33°32'20" W	78.14'
L4	S 02°10'24" W	49.16'
L5	S 11°46'19" E	30.57'
L6	S 15°58'43" W	16.26'
L7	S 11°44'11" W	14.86'
L8	S 00°00'00" W	148.49'
L9	S 53°03'41" W	89.40'
C10	Rod: 104.78	ARC: 63.86'
	Chd: S 13°54'17" W	62.88'
C11	Rod: 71.04	ARC: 30.36'
	Chd: S 15°48'53" E	30.13'
C12	Rod: 219.00	ARC: 41.17'
	Chd: S 33°26'36" E	41.11'
C13	Rod: 174.85	ARC: 52.03'
	Chd: S 00°05'24" W	51.84'
C14	Rod: 309.80	ARC: 45.87'
	Chd: S 12°40'37" E	45.83'
C15	Rod: 399.27	ARC: 42.96'
	Chd: S 08°04'57" E	42.94'
C16	Rod: 830.86	ARC: 42.81'
	Chd: S 03°31'27" E	42.81'
C17	Rod: 91.51	ARC: 11.19'
	Chd: S 01°27'24" W	11.19'
C18	Rod: 180.23	ARC: 51.64'
	Chd: S 09°05'04" W	51.47'
C19	Rod: 157.15	ARC: 20.63'
	Chd: S 06°53'06" E	20.61'
L20	S 11°48'06" E	30.16'
L21	S 14°09'11" E	11.67'
C22	Rod: 140.65	ARC: 36.01'
	Chd: S 42°38'25" W	35.91'
C23	Rod: 194.55	ARC: 58.74'
	Chd: S 26°39'23" W	58.52'
C24	Rod: 569.45	ARC: 28.48'
	Chd: S 16°34'27" W	28.48'
L25	S 19°35'14" W	5.23'
L26	S 25°07'58" W	4.86'
L27	S 69°56'41" W	8.27'
C28	Rod: 61.35	ARC: 49.84'
	Chd: S 52°23'45" W	49.06'
C29	Rod: 290.18	ARC: 39.12'
	Chd: S 30°59'03" W	39.10'
C30	Rod: 85.04	ARC: 48.75'
	Chd: S 10°42'00" W	48.06'
C31	Rod: 330.22	ARC: 48.45'
	Chd: S 09°45'45" E	48.41'

1100 SITE

Course	Bearing	Distance
C53	Rod: 77.30'	ARC: 14.13'
	Chd: S 52°57'32" W	14.11'
C54	Rod: 96.05	ARC: 18.21'
	Chd: S 44°17'17" W	18.18'
C55	Rod: 245.69	ARC: 16.34'
	Chd: S 36°57'06" W	16.33'
C56	Rod: 188.39	ARC: 12.88'
	Chd: S 33°05'15" W	12.86'
C57	Rod: 181.42	ARC: 16.81'
	Chd: S 29°06'21" W	12.80'
C58	Rod: 95.83	ARC: 30.73'
	Chd: S 18°04'37" W	30.30'
C59	Rod: 82.47	ARC: 43.62'
	Chd: S 06°04'54" E	43.11'
C60	Rod: 84.36	ARC: 46.27'
	Chd: S 36°56'53" E	45.70'
C61	Rod: 150.24	ARC: 28.75'
	Chd: S 58°08'40" E	28.71'
C62	Rod: 678.19	ARC: 24.23'
	Chd: S 64°29'56" E	24.22'
L63	S 64°29'56" E	15.70'
L64	S 62°54'06" E	37.82'
L65	S 62°03'19" E	12.50'
C66	Rod: 1538.90	ARC: 16.01'
	Chd: S 13°48'37" W	16.01'
C67	Rod: 438.60	ARC: 40.94'
	Chd: S 15°14'40" W	40.94'
C68	Rod: 1430.51	ARC: 23.82'
	Chd: S 12°29'59" W	23.82'
C69	Rod: 197.77	ARC: 20.29'
	Chd: S 09°05'00" W	20.28'
C70	Rod: 110.93	ARC: 21.06'
	Chd: S 00°42'18" W	21.03'
C71	Rod: 96.45	ARC: 26.87'
	Chd: S 12°42'56" E	26.78'
C72	Rod: 135.85	ARC: 22.43'
	Chd: S 25°26'44" E	22.41'
C73	Rod: 173.64	ARC: 17.71'
	Chd: S 33°06'55" E	17.70'
C74	Rod: 168.98	ARC: 7.78'
	Chd: S 27°58'06" E	7.78'
C75	Rod: 650.47	ARC: 11.07'
	Chd: S 26°08'42" E	11.07'
C76	Rod: 135.14	ARC: 14.92'
	Chd: S 14°05'06" W	14.92'
C77	Rod: 130.40	ARC: 29.34'
	Chd: S 10°48'15" W	29.27'
C78	Rod: 123.46	ARC: 16.01'
	Chd: S 00°38'35" W	16.00'
C79	Rod: 272.93	ARC: 17.51'
	Chd: S 04°54'39" E	17.51'
C80	Rod: 185.89	ARC: 22.58'
	Chd: S 10°53'55" E	22.58'
C81	Rod: 233.33	ARC: 36.40'
	Chd: S 04°12'42" W	36.36'
C82	Rod: 308.51	ARC: 24.15'
	Chd: S 02°29'59" E	24.14'
C83	Rod: 82.71	ARC: 35.90'
	Chd: S 17°10'42" E	35.82'
C84	Rod: 91.50	ARC: 20.08'
	Chd: S 35°54'46" E	20.08'
C85	Rod: 178.58	ARC: 15.64'
	Chd: S 44°43'13" E	15.64'
C86	Rod: 344.98	ARC: 26.78'
	Chd: S 49°27'21" E	26.77'
L87	S 49°02'09" E	15.79'
L88	S 22°36'56" E	20.53'
C89	Rod: 265.66	ARC: 28.66'
	Chd: S 26°03'39" E	28.66'
C90	Rod: 424.11	ARC: 30.92'
	Chd: S 31°21'38" E	30.92'
L91	S 16°26'48" E	11.67'
L92	S 30°02'27" W	12.11'
L93	S 26°59'29" W	7.30'
L94	S 26°39'57" W	12.55'
L95	S 33°28'11" W	13.59'
C96	Rod: 317.41	ARC: 19.31'
	Chd: S 31°12'11" W	19.31'
C97	Rod: 568.38	ARC: 24.24'
	Chd: S 28°14'17" W	24.24'
C98	Rod: 286.21	ARC: 32.03'
	Chd: S 22°38'45" W	32.01'
C99	Rod: 148.12	ARC: 27.06'
	Chd: S 13°58'42" E	27.06'
C100	Rod: 916.10	ARC: 26.80'
	Chd: S 07°53'58" W	26.80'
C101	Rod: 140.25	ARC: 14.74'
	Chd: S 04°03'02" W	14.73'
C102	Rod: 267.09	ARC: 20.10'
	Chd: S 01°07'00" E	20.10'
C103	Rod: 112.08	ARC: 19.22'
	Chd: S 08°11'10" E	19.20'
L104	S 14°47'36" E	12.56'
L105	S 17°29'08" E	16.40'
L106	S 19°10'29" E	23.86'
L107	S 20°41'39" E	20.56'
L108	S 22°51'19" E	7.15'
L109	S 25°46'53" W	9.14'
C110	Rod: 138.51	ARC: 19.24'
	Chd: S 28°45'04" W	19.23'
C111	Rod: 105.19	ARC: 17.73'
	Chd: S 19°53'06" W	17.71'
L112	S 11°22'29" W	11.36'
L113	S 31°14'07" W	6.84'
C114	Rod: 95.38	ARC: 17.51'
	Chd: S 23°41'55" W	17.48'
L115	S 16°01'16" W	14.44'
L116	S 42°29'40" W	2.28'
C117	Rod: 83.26	ARC: 33.55'
	Chd: S 40°02'10" W	33.32'
C118	Rod: 128.94	ARC: 20.21'
	Chd: S 24°00'08" W	20.19'
C119	Rod: 153.77	ARC: 22.37'
	Chd: S 15°20'35" W	22.35'
C120	Rod: 83.94	ARC: 36.51'
	Chd: S 01°17'03" E	36.22'
C121	Rod: 110.81	ARC: 17.61'
	Chd: S 18°17'45" E	17.59'
L122	S 28°07'49" E	17.31'
L123	S 27°41'54" E	8.36'
L124	S 86°01'28" W	4.84'
L125	S 86°34'53" W	3.91'
L126	N 89°40'26" W	8.44'
C127	Rod: 316.19	ARC: 13.92'
	Chd: N 86°30'42" W	13.92'
C128	Rod: 75.00	ARC: 78.96'
	Chd: S 64°35'24" W	78.36'

1200 SITE

Course	Bearing	Distance
C129	Rod: 283.85	ARC: 97.24'
	Chd: S 69°28'36" E	96.77'
L130	S 38°42'57" E	23.28'
C131	Rod: 101.93	ARC: 33.24'
	Chd: S 27°51'49" E	33.24'
C132	Rod: 322.76	ARC: 53.27'
	Chd: S 48°02'54" E	53.21'
L133	S 32°53'08" E	20.38'
L134	S 27°42'50" E	27.15'
L135	S 03°10'53" E	43.73'
L136	S 50°41'53" E	65.00'
L137	S 41°02'05" E	44.68'
L138	S 42°09'49" E	35.68'
C139	Rod: 207.75	ARC: 49.84'
	Chd: S 22°00'24" E	49.72'
L140	S 29°44'51" E	28.32'
C141	Rod: 122.75	ARC: 63.93'
	Chd: S 43°10'34" E	63.21'
L142	S 63°56'56" E	13.20'
C143	Rod: 125.22	ARC: 80.01'
	Chd: S 33°17'03" E	78.65'
C144	Rod: 87.02	ARC: 57.67'
	Chd: S 70°54'34" E	56.82'
L145	S 58°47'50" E	4.42'
C146	Rod: 388.86	ARC: 34.46'
	Chd: S 50°51'35" W	37.44'
C147	Rod: 92.70	ARC: 65.67'
	Chd: S 70°54'34" W	64.30'
C148	Rod: 203.18	ARC: 47.31'
	Chd: S 00°40'51" E	47.20'
C149	Rod: 144.40	ARC: 99.69'
	Chd: S 28°17'42" E	97.22'
C150	Rod: 391.74	ARC: 35.35'
	Chd: S 50°21'25" E	32.34'

500 SITE

Course	Bearing	Distance
C163	Rod: 89.77	ARC: 18.83'
	Chd: S 62°40'42" E	18.80'
C164	Rod: 157.90	ARC: 33.03'
	Chd: S 03°00'37" W	32.94'
C165	Rod: 40.75	ARC: 13.74'
	Chd: S 00°45'57" W	13.66'
C166	Rod: 84.03	ARC: 45.91'
	Chd: S 01°03'15" W	45.34'
L167	S 15°16'57" E	24.93'
C168	Rod: 94.89	ARC: 45.43'
	Chd: S 30°28'11" E	45.00'
C169	Rod: 85.36	ARC: 56.54'
	Chd: S 18°28'18" E	55.51'
L170	S 21°06'44" E	16.27'
L171	S 23°35'52" E	20.73'
L172	S 26°17'40" E	18.12'
L173	S 01°09'29" E	18.08'
C174	Rod: 60.15	ARC: 62.44'
	Chd: S 21°46'59" E	60.88'
L175	S 38°53'19" E	33.63'
C176	Rod: 192.16	ARC: 48.03'
	Chd: S 21°34'30" E	47.90'
C177	Rod: 91.34	ARC: 53.46'
	Chd: S 08°37'37" W	52.70'
L178	S 08°54'41" E	36.94'

BLUE STAR SITE

Course	Bearing	Distance
L251	N 73°47'10" E	18.86'
L252	N 44°08'55" E	44.00'
L253	N 14°30'40" E	18.86'
L254	N 68°39'38" W	39.86'
L255	S 1°55'04" E	60.00'
L256	S 64°30'44" E	42.51'

HOOD AVENUE

Course	Bearing	Distance
L257	N 88°32'29" W	20.13'
L258	N 33°46'29" W	46.33'
L259	S 56°13'31" W	27.40'
L260	S 26°58'35" W	28.65'
L261	S 56°13'31" W	42.00'
L262	S 85°28'26" W	28.65'
L263	S 12°49'20" E	49.10'
L264	S 71°45'33" W	20.09'
L265	N 12°49'20" W	40.35'
L266	N 72°41'00" W	5.61'
L267	N 11°19'31" W	35.00'
L268	N 60°49'45" E	56.00'
L269	S 74°27'58" E	76.76'
L270	S 77°16'40" W	31.85'
L271	S 77°16'40" W	4.20'
L272	S 32°16'40" W	48.85'
L273	N 74°27'58" W	16.88'
L274	N 74°27'58" W	76.76'
L275	S 60°49'45" W	28.00'
L276	S 60°49'45" W	28.00'
L277	S 16°07'29" W	76.76'

600 SITE

Course	Bearing	Distance
L179	N 08°54'41" W	39.30'
C180	Rod: 133.59	ARC: 139.56'