



CLAYTON COUNTY  
**Water**  
AUTHORITY  
**STORMWATER UTILITY  
OVERVIEW**





# What is stormwater?

Runoff from impervious surfaces such as driveways, parking lots and rooftops





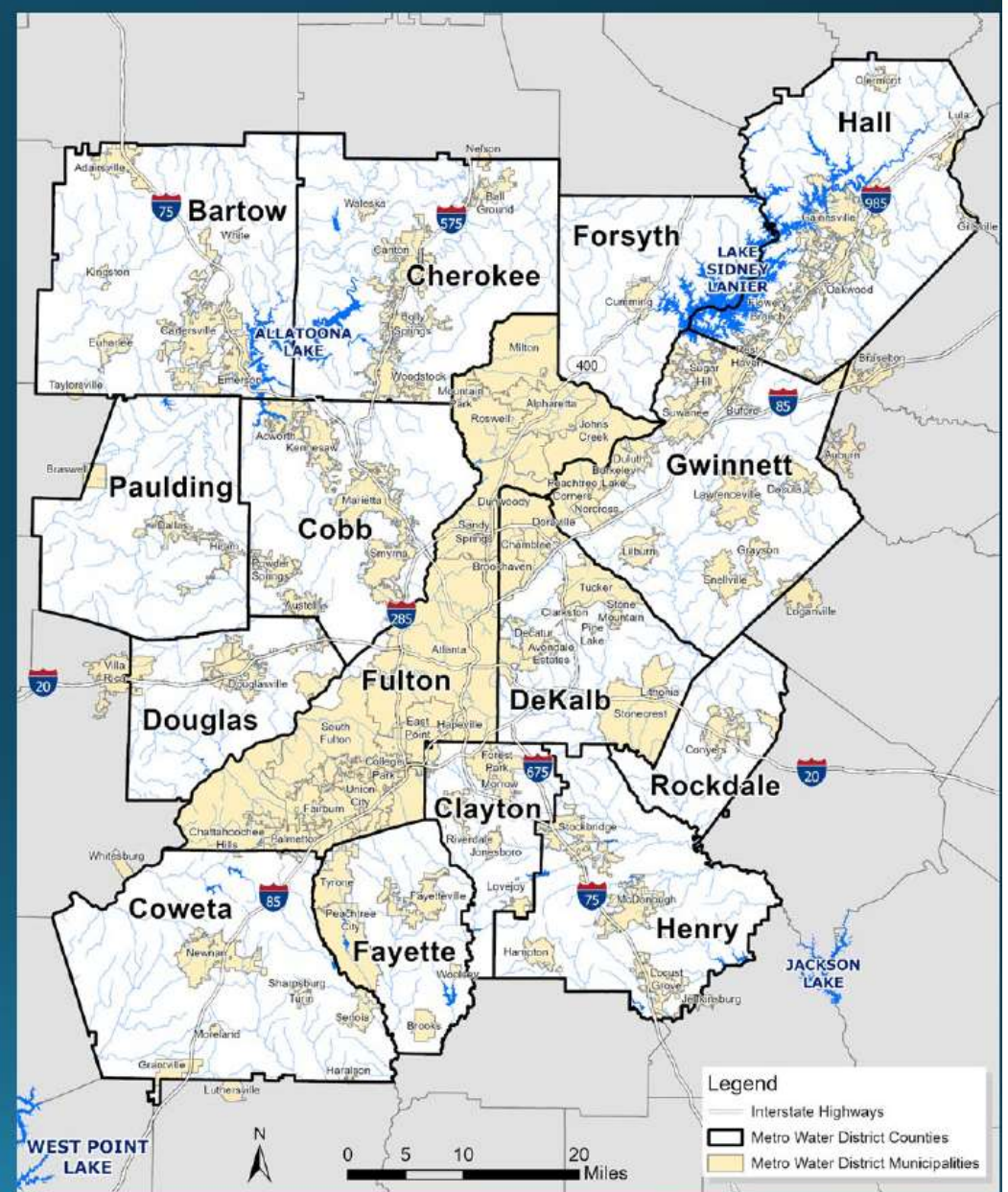


# Metropolitan North Georgia Water Planning District

AKA "MNGWPD"

AKA "The District"

<https://northgeorgiawater.org/>



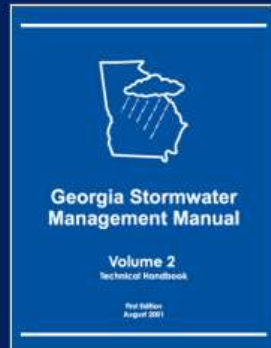


# A Brief History



2001

Atlanta Regional Commission (ARC) introduces the first GA Stormwater Management Manual (GSMM)



2015

ARC engages stakeholders to develop the 2016 GSMM



2016

GA Environmental Protection Division (EPD) mandates adoption of 2016 GSMM or equivalent by local governments





GA Environmental Protection Division (EPD) issues first Phase I Municipal Separate Storm Sewer System (MS4) Permits including Clayton County

1993



GA Legislature forms the Metropolitan North Georgia Water Planning District (MNGWPD)

2001



Atlanta Regional Commission (ARC) introduces the first GA Stormwater Management Manual (GSMM)



First MNGWPD Model Ordinance for Post-Development Stormwater Management

2002



GA EPD mandates adoption of 2016 (updated) GSMM or equivalent by local governments

GA EPD updates Phase I MS4 permit to require runoff reduction standard for post-construction stormwater runoff

2016

MNGWPD updates Model Ordinance for Post-Development Stormwater Management

2019



# Clayton County Water Authority Stormwater Utility

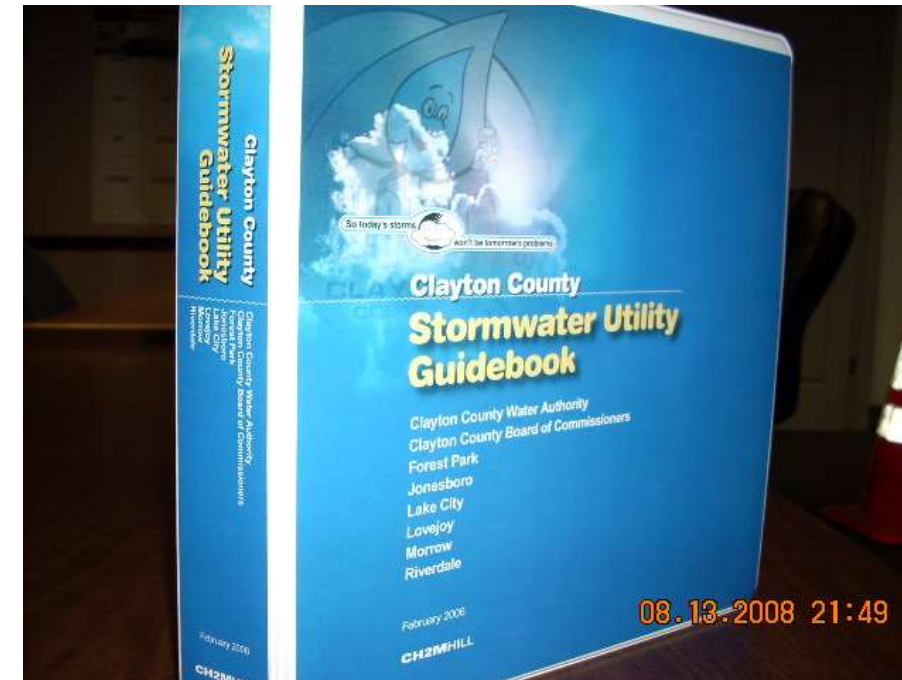
## ■ History

- November 2003 – County Commission request CCWA take lead in evaluating the best way to manage and fund Stormwater related issues
- March 2004 – 6 Cities joined the Feasibility Study
- August 2004 – Feasibility Study Completed
  - Recommended a dedicated funding source be established by developing a Stormwater Utility
  - Recommended that CCWA would be the best agency to manage The Utility



# Clayton County Water Authority Stormwater Utility

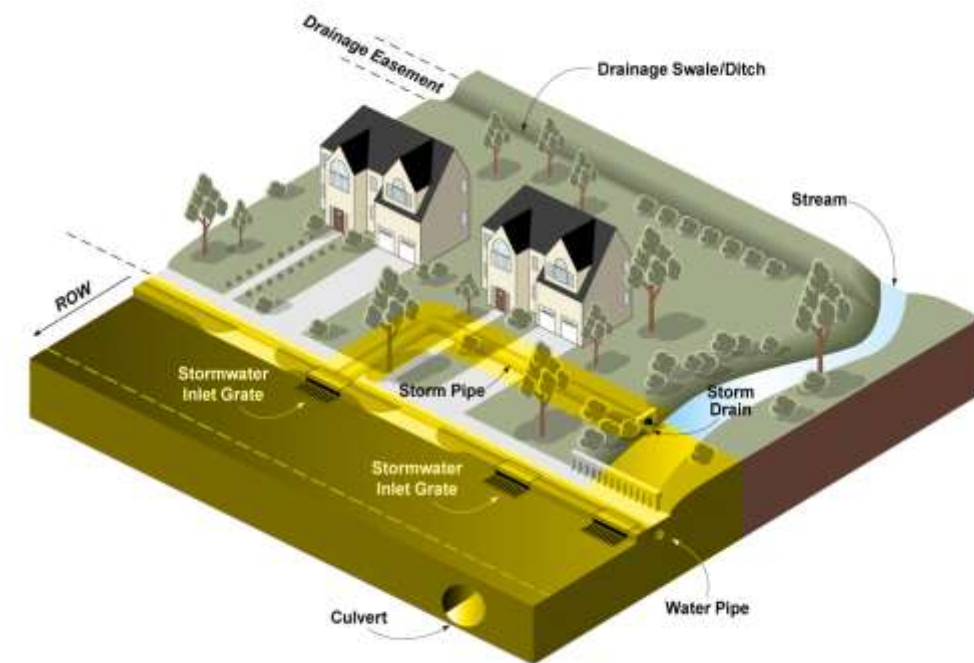
- **Intergovernmental Agreement**
  - 2005 Adoption
  - Defined responsibilities amongst CCWA and County/Cities
  - Referenced Stormwater Utility Guidebook for further responsibilities
  - Negotiations included credits for infrastructure donations
- **Stormwater Utility Guidebook**
  - 2006 Adoption (Updated 2020)
  - Established operating policies
- **Stormwater Ordinance**
  - 2006 Adoption
  - Legal tool for public compliance and enforcement





# Clayton County Water Authority Stormwater Utility

- Model Ordinances
  - Post Development
  - Floodplain Management
  - Erosion & Sedimentation Control
  - Stream Buffer Protection
  - Conservation Subdivision
  - Illicit Discharge/Illegal Connection
  - Litter Control







# Clayton County Water Authority Stormwater Utility

- Began billing and administrative services in May 2007
- Full maintenance services began July 1, 2007
- Provides stormwater management services to:
  - Forest Park
  - Jonesboro
  - Lake City
  - Lovejoy
  - Morrow
  - Riverdale
  - Unincorporated areas of Clayton County





# The big question: *What services are provided by the Stormwater Utility?*







## Stormwater Utility services include:



- Construction plan reviews and inspections
- Maintenance, repair and replacement of stormwater infrastructure within the road right-of-way, and directly connected to the right-of-way





# Stormwater Utility services include:

- Illicit discharge/illegal connection inspections
- Floodplain management
- Public education/public involvement
- Watershed improvement activities





## Responsibilities of property owners and local jurisdictions:

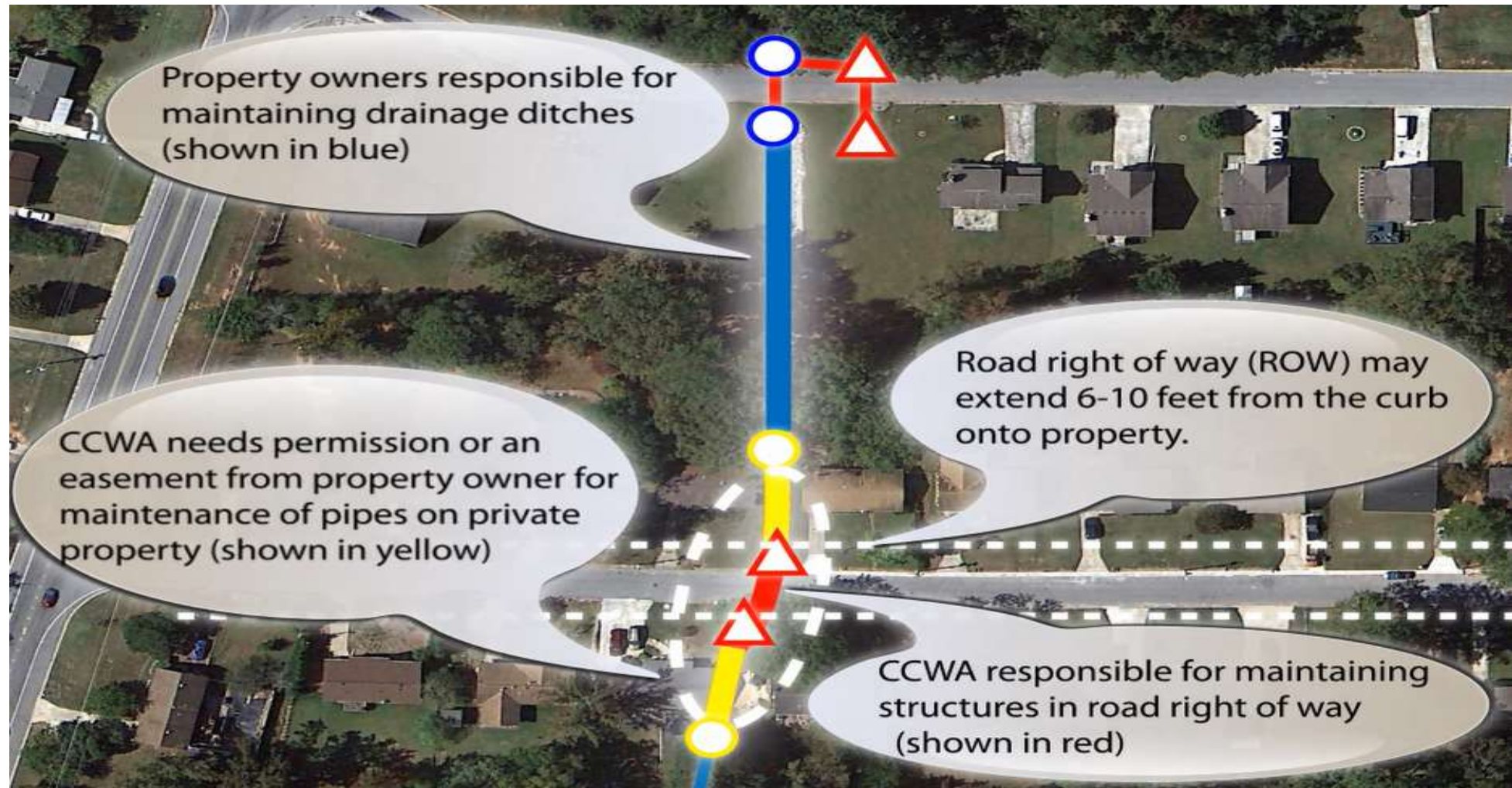
- Maintain or clean curb and gutter
- Clean or mow roadside ditches







# Another look at the Stormwater Utility service area







# You spoke, We listened!

## *Your Top 3 Constituent Concerns*



### What are Stormwater Utility fees used for?

Stormwater utility fees are dedicated exclusively to stormwater management activities





# You spoke, We listened!

## *Your Top 3 Constituent Concerns*



Who is responsible for neighborhood detention and retention pond maintenance?



- The Homeowners Association or the developer are typically responsible
- For unfinished subdivision ponds, the developer or the bank holding the lots is responsible





# You spoke, We listened!

## *Your Top 3 Constituent Concerns*



**Who is responsible for overflowing stormwater pipes or inlets?**

- **Overflows from stormwater facilities within or directly connected to the right-of-way are the responsibility of the Stormwater Utility**
- **All other overflows are the responsibility of the property owner or another jurisdiction**







# Stormwater Utility customers receive a true return on their investment



- Stormwater Utility staff responded to more than 1,225 stormwater calls during FY 2020-2021
- Stormwater Utility staff addressed 1,995 stormwater work orders during FY 2020-2021



# The CCWA Stormwater Utility is committed to the Clayton County community!

- Annual Household Hazardous Waste Amnesty Day
- Rivers Alive Stream Cleanup Event
- Stormwater and Water Quality Education

