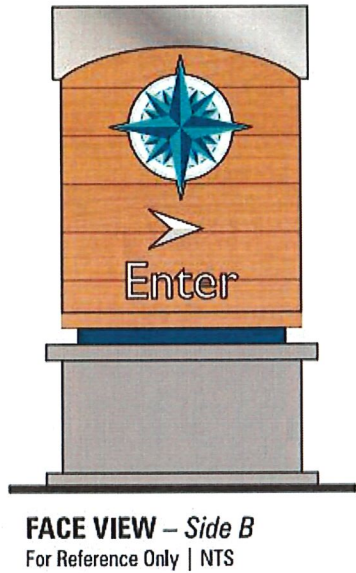


INSTALL NOTE:
SIGN INSTALL LOCATION TO BE
COORDINATED w/ CUSTOMER



SURVEY REQ'D
VERIFY INSTALL LOCATION

PRODUCTION NOTES

TOP CABINET DECOR:
– D/F fab'd aluminum decor (1" sq tube / angle + .125 faces / top / filler) with painted silver finish

MAIN CABINET:
– D/F fab'd aluminum cabinet (2" sq tube frame + .125 faces + .080 filler + .063 top / bottom); non-illum.
– Cabinet (faces, ends) to be clad with Alpolic® metal composite material with faux wood finish (Maple Timber, typical shown) and routed faux panel seams (1/8" typ., filled w/ brown paint)
– Cut-out 1/2" thick aluminum compass logo, arrow and copy, flush mounted to face

NOTE: compass logo is printed on reflective white vinyl; arrow and letters are painted non-reflective white, with reflective white vinyl face overlays (+ silver vinyl on bottom half of arrow)

REVEAL & BASE:
– D/F fabricated aluminum cabinet (2" sq tube frame + .125 faces/filler + .063 bottom) with 2" sq tube reveal and raised cabinet trim (top and bottom)

INSTALLATION:
– Typical direct embed steel column with concrete footing as req'd (TBD)

- COLORS** COLORS SHOWN ARE REPRESENTATIVE ONLY **ALL PAINT FINISHES TO HAVE SATIN FINISH**
- 1 Alpolic Maple Timber #4MPL8 (composite / faux wood finish)
 - 2 Silver (AN-811R metallic paint / 3M #7725-120 Satin Alum. vinyl)
 - 3 Sherwin Williams #9168 Elephant Ear (paint to match)
 - 4 Blue Pantone #534 C (paint to match)
 - 5 White (3M reflective vinyl / non-reflective white paint)
 - 6 SW #7598 Sierra Redwood (paint) – faux wood seams
 - 7 Digital Printed Graphics (compass logo artwork)

COMPASS

MARGANTAVILLE HOTELS & RESORTS

Flagler Beach, FL

DATE

19-Mar-2024

CUSTOMER

Sun Properties

PROJECT

Compass By MGVL

Flagler Beach / Exterior

LOCATION

111 S. Daytona Ave.

DESCRIPTION

Directional Sign

SALES

G. Stalvey

DESIGNER

M. Donellan

SCALE

1" = 1' - 0"

DRAWING

62458-h1

REVISIONS

REV	DATE	BY	NOTE

CUSTOMER APPROVAL

©2024 Tyson Sign Company

This design and illustration is the original and unpublished work of Tyson Sign Company, Inc., and it may not be reproduced, copied or exhibited in any fashion without written consent from an authorized officer of our company.

TYSON SIGN COMPANY

Putting Your Business Out Front!

CONTACT INFO

1-843-448-5168

Fax: 843-448-0535

Mail: P.O. Box 50580

Myrtle Beach, SC 29579

www.tysonsign.com

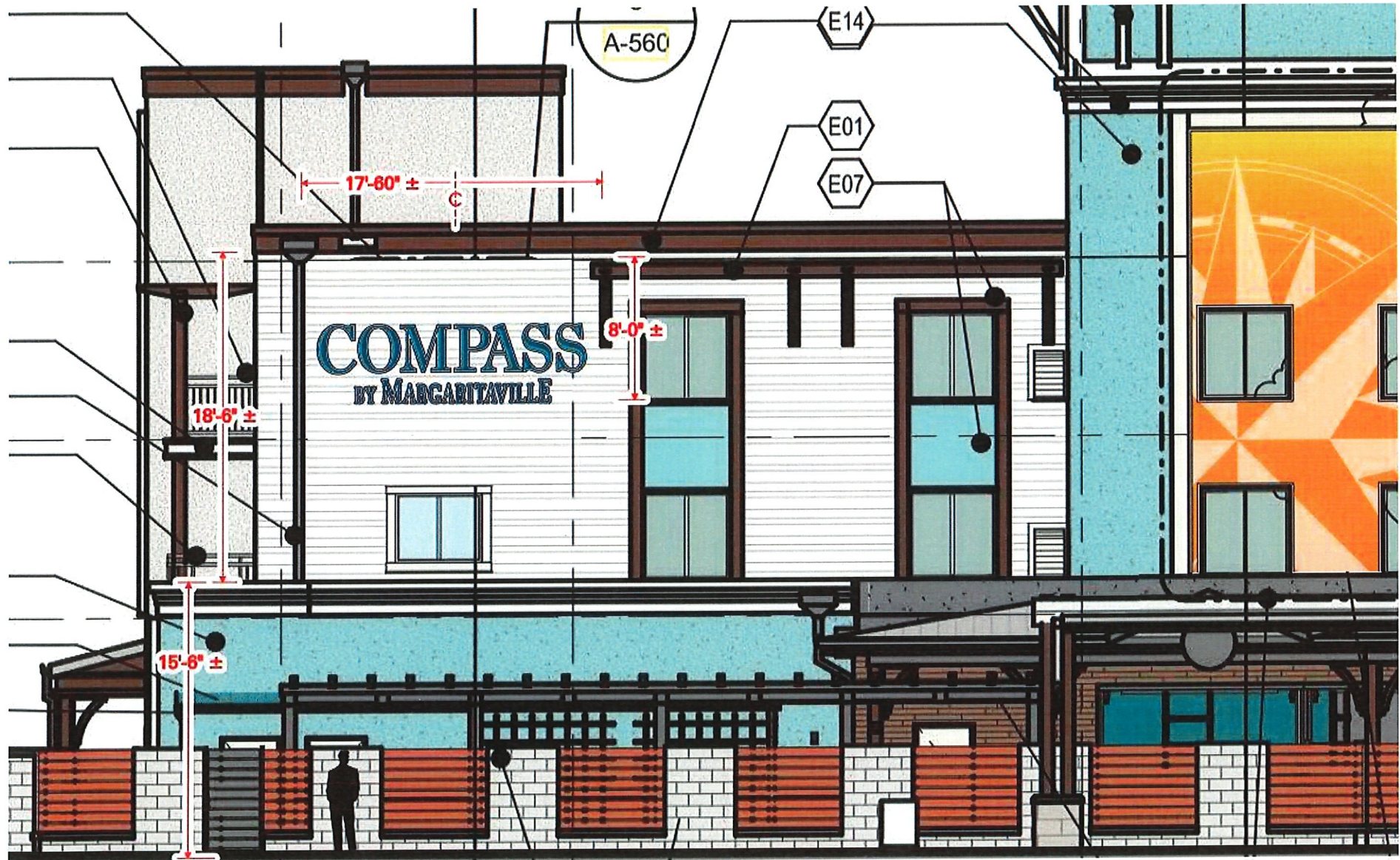
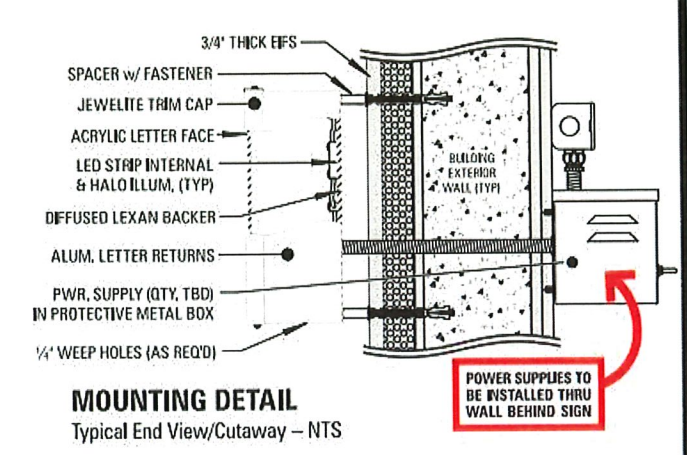
ELECTRIC SIGN MUST BE INSTALLED IN ACCORDANCE WITH ARTICLE 600 OF THE NEC (NATIONAL ELECTRIC CODE)

UL LISTED

SSA

INTERNATIONAL SIGN ASSOCIATION

Qty. (1) D/F Non-illum. Directional Sign – "Enter"



INSTALLED - Partial West Elevation
For Reference Only | Scale: 1/8" = 1'-0"

Qty. (1) Set Face & Halo Illuminated Letters for West Elevation (S. Daytona Ave.)

PRODUCTION NOTES

"COMPASS" / "BY MARGARITAVILLE" LETTERS:
- Fabricated aluminum channel construction (5" coil stock + .063 returns) with 3/16" clear Lexan backs for halo illum.
- Flat 3/16" white #7328 acrylic faces with digitally printed translucent vinyl overlay graphics (color/white/color on clear) and 1" plastic trim
- White LED internal face and halo illumination (as required)

ELECTRICAL:
CIRCUITS: (1) 120V 20A + (1) Toggle Switch
LEDS: (12) Principal QuikMod-1 + (146) QuikMod-2
PS: (2) 12V 120W

INSTALLATION:
- Letters mount individually with 2" spacers against building facade as req'd (see Mounting Detail)

COLORS COLORS SHOWN ARE REPRESENTATIVE ONLY **ALL PAINT FINISHES TO HAVE SATIN FINISH**
1 White (#7328 acrylic / paint / Jewelrite) - faces, returns, trim
2 Blue 3M #3630-36 (vinyl)
3 Intense Blue 3M #3630-127 (vinyl) - "COMPASS" letter highlights

MARGARITAVILLE HOTELS & RESORTS

Flagler Beach, FL

DATE

21-May-2024

CUSTOMER

Sun Properties

PROJECT

Compass By MGVL

Flagler Beach / Exterior

LOCATION

111 S. Daytona Ave.

DESCRIPTION

"Compass By MGVL" - W

SALES

G. Stalvey

DESIGNER

M. Donellan

SCALE

1/2" = 1' - 0"

DRAWING

62458-c3

REVISIONS			
REV	DATE	BY	NOTE

CUSTOMER APPROVAL

©2024 Tyson Sign Company

This design and illustration is the original and unpublished work of Tyson Sign Company, Inc., and it may not be reproduced, copied or exhibited in any fashion without written consent from an authorized officer of our company.

TYSON SIGN COMPANY

Putting Your Business Out Front!

CONTACT INFO

1-843-448-5168

Fax: 843-448-0535

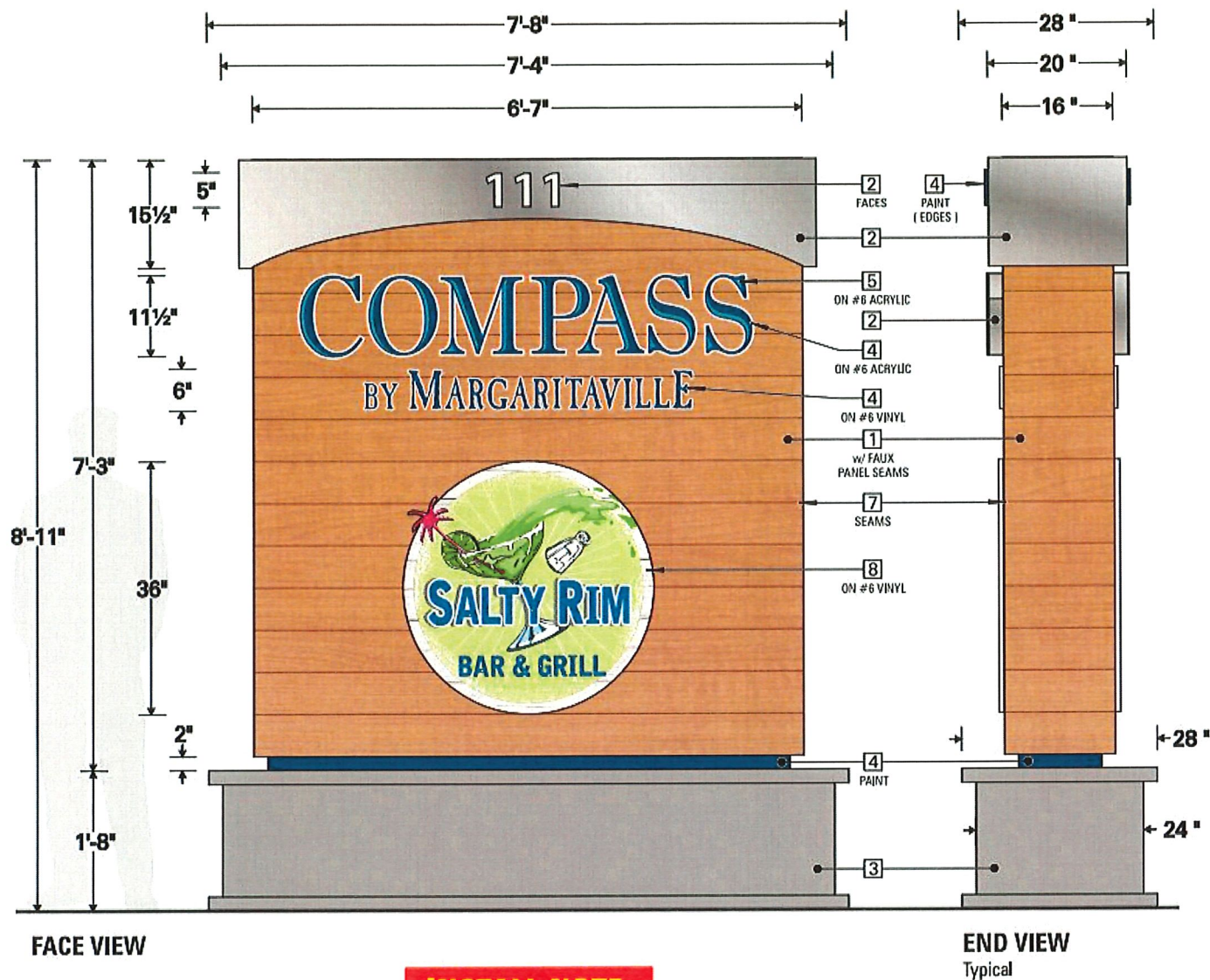
Mail: P.O. Box 50580

Myrtle Beach, SC 29579

www.tysonsign.com

ELECTRIC SIGN MUST BE INSTALLED IN ACCORDANCE WITH ARTICLE 600 OF THE NEC (NATIONAL ELECTRIC CODE)

SSA **ISA** INTERNATIONAL SIGN ASSOCIATION



INSTALL NOTE:

SIGN INSTALL LOCATION TO BE COORDINATED w/ CUSTOMER

**ELECTRICIAN
TO MAKE FINAL
CONNECTION**

PRODUCTION NOTES

TOP CABINET DECOR:

- D/F fab'd aluminum decor (2" sq tube / angle + .125 faces / top / filler) with painted silver finish
- Cut-out 1/2" thick aluminum numerals flush mounted to face; non-illum.
- NOTE: numeral faces painted silver and edges are painted blue

MAIN CABINET:

- D/F fab'd aluminum cabinet (2" sq tube frame + .125 faces + .080 filler + .063 top / bottom + .050 cap)
- Cabinet (faces, ends) to be clad with Alpolic® metal composite material with faux wood finish (Maple Timber, typical shown) and routed faux panel seams (1/8" typ., filled w/ brown paint)
- Internal white LED illumination (behind faces)

"COMPASS" LETTERS:

- Fab'd trimless channel construction with white #7328 acrylic faces, vinyl face overlays, and painted finish returns and backs
- Embedded white LEDs as req'd for internal illumination (faces only)
- Letters mount flush to cabinet face

"BY MARGARITAVILLE" LETTERS:

- Routed into cabinet faces (aluminum + composite) with 1" thick clear acrylic push-thru letters and digitally printed vinyl face overlays (on white vinyl / 2nd surface diffuser)

"SALTY RIM BAR & GRILL" SECTION:

- Routed .125 aluminum face with 1" thick clear acrylic push-thru circle (+ contour for palm in glass as shown) digitally printed vinyl face overlay (typical / on white vinyl + 2nd surface diffuser)
- Internal white LED illumination

REVEAL & BASE:

- D/F fabricated aluminum cabinet (2" sq tube frame + .125 faces/filler + .063 bottom) with 2" sq tube reveal and raised cabinet trim (top and bottom)

ELECTRICAL:

- CIRCUITS: (1) 120V 20A + (1) Toggle Switch
- LED LAMPS: (6) 60" DS Pinnacle + PS: (2) 24V-96W
- LEDS: (50) Principal QuikMod-2 + PS: (2) 12V-60W

INSTALLATION:

- Typical direct embed steel column with concrete footing as req'd (TBD)

COLORS

COLORS SHOWN ARE REPRESENTATIVE ONLY

ALL PAINT FINISHES TO HAVE SATIN FINISH

- 1 Alpolic Maple Timber #4MPL8 (composite / faux wood finish)
- 2 Silver AN-811R (metallic paint)
- 3 Sherwin Williams #9168 Elephant Ear (paint to match)
- 4 Blue 3M #3630-36 (vinyl, paint to match)
- 5 Intense Blue 3M #3630-127 (vinyl) - "COMPASS" letter highlights
- 6 White (#7328 acrylic / Oracal vinyl)
- 7 SW #7598 Sierra Redwood (paint) - faux wood seams
- 8 Digital Printed Graphics ("Salty Rim" artwork)



Flagler Beach, FL

DATE

29-Feb-2024

CUSTOMER

Sun Properties

PROJECT

Compass By MGVI
Flagler Beach / Exterior

LOCATION

111 S. Daytona Ave.

DESCRIPTION

Monument ID Sign

SALES

G. Stalvey

DESIGNER

M. Donellan

SCALE

1/2" = 1' - 0"

DRAWING

62458-g1

REVISIONS

REV	DATE	BY	NOTE
1/1	18-Mar-24	MD	+ Salty Rim logo

CUSTOMER APPROVAL



©2024 Tyson Sign Company

This design and illustration is the original and unpublished work of Tyson Sign Company, Inc., and it may not be reproduced, copied or exhibited in any fashion without written consent from an authorized officer of our company.



Putting Your Business
Out Front!

CONTACT INFO

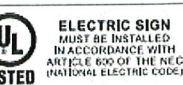
1-843-448-5168

Fax: 843-448-0535

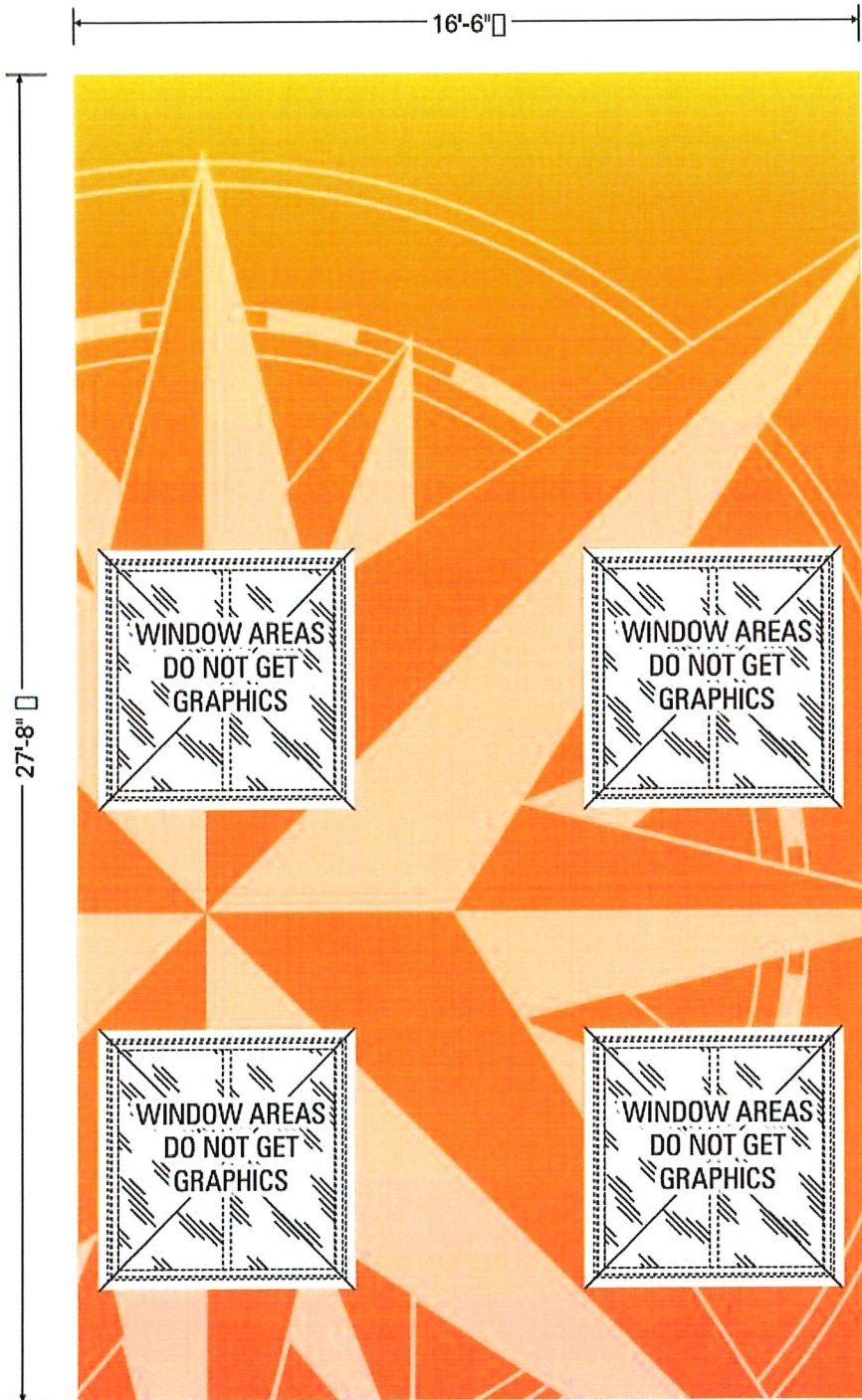
Mail: P.O. Box 50580

Myrtle Beach, SC 29579

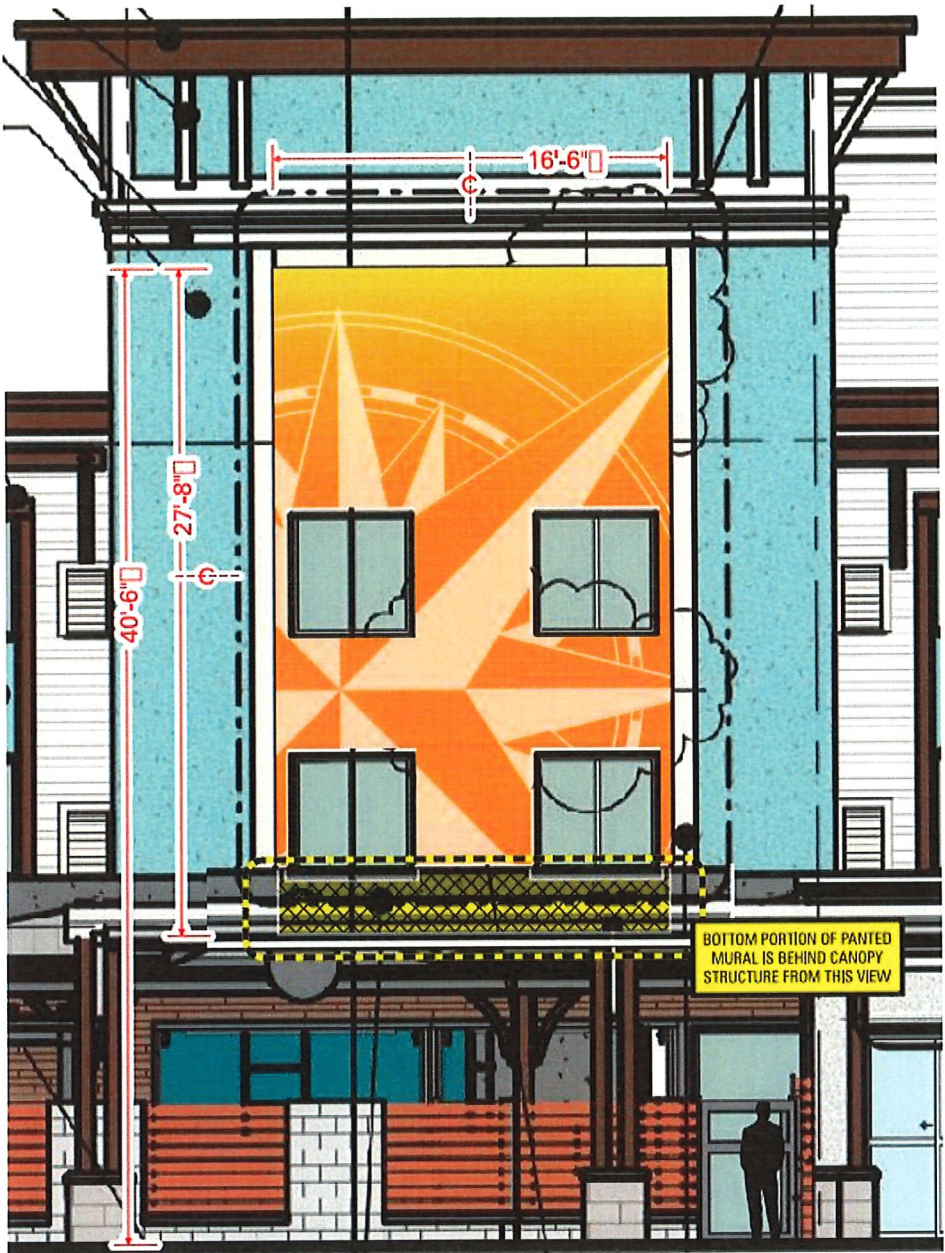
www.tysonsign.com



Qty. (1) D/F Internally Illuminated Monument ID Sign



PAINTED MURAL - Windows Shown Typical



INSTALLED - Partial West Elevation
For Reference Only | Scale: 1/8" = 1'-0"

PRODUCTION NOTES

- Painted mural by others

COLORS COLORS SHOWN ARE REPRESENTATIVE ONLY ALL PAINT FINISHES TO HAVE SATIN FINISH

☒ Background Gradient Reference:

- PMS 106
- PMS 151
- PMS BRIGHT RED

Qty. (1) Painted Mural for West Elevation (S. Daytona Ave.)



Flagler Beach, FL

DATE
29-Feb-2024

CUSTOMER
Sun Properties

PROJECT
Compass By MGVL
Flagler Beach / Exterior

LOCATION
111 S. Daytona Ave.

DESCRIPTION
Facade Painted Mural

SALES
G. Stalvey

DESIGNER
M. Donellan

SCALE
1/4" = 1' - 0"

DRAWING
62458-b1-R1

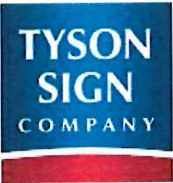
REVISIONS

REV	DATE	BY	NOTE
n/a	18-Mar-24	MD	survey box edited
R1	03-Jun-24	BP	chg spec

CUSTOMER APPROVAL

©2024 Tyson Sign Company

This design and illustration is the original and unpublished work of Tyson Sign Company, Inc., and it may not be reproduced, copied or exhibited in any fashion without written consent from an authorized officer of our company.



Putting Your Business
Out Front!

CONTACT INFO

1-843-448-5168
Fax: 843-448-0535
Mail: P.O. Box 50580
Myrtle Beach, SC 29579
www.tysonsign.com

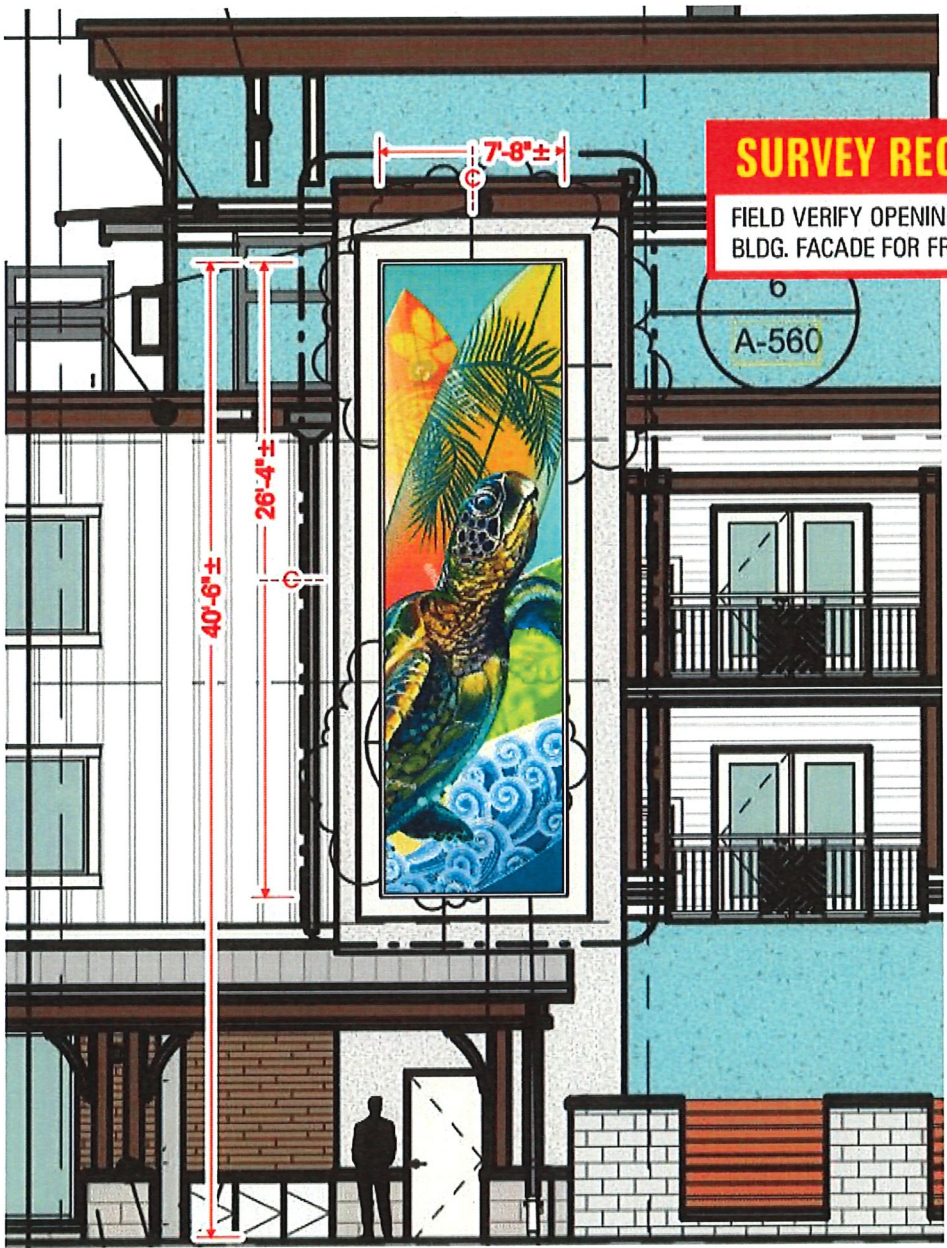




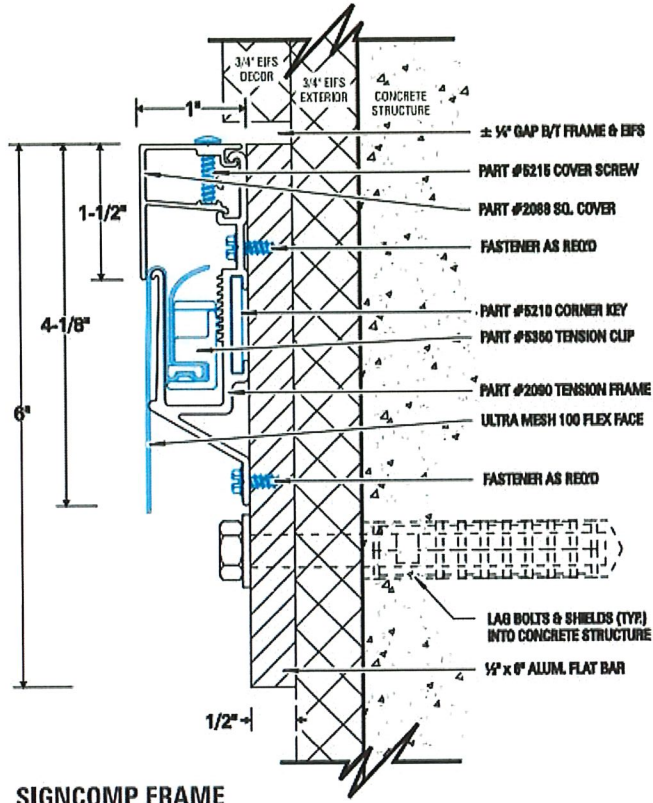
1 1/2" ANODIZED ALUM. FRAME

ARTWORK NOTE
ARTWORK SHOWN IS COMPOSITE SHUTTERSTOCK VECTOR IMAGES; FINAL ARTWORK TO BE APPROVED

SUPER GRAPHIC w/ FRAME – Graphic Shown Typical



INSTALLED – Partial North Elevation
For Reference Only | Scale: 1/8" = 1'-0"



SIGNCOMP FRAME & MOUNTING DETAIL
Wireframe cutaway / for ref. only | NTS

PROOF REQ'D
DIGITAL PROOF REQUIRED FOR CUSTOMER APPROVAL BEFORE FINAL PRODUCTION

PRODUCTION NOTES

– Digitally printed graphic on flexible face material

INSTALLATION:

– Mount directly against building facade using SignComp #2090 Wall Mount Tension Frame (anodized aluminum finish) and fasteners as req'd

MOUNTING NOTE: 1/2"x6" alum. flat bar req'd behind entire frame (perimeter for attachment to building wall (see Signcomp Frame & Mounting Detail above))

COLORS COLORS SHOWN ARE REPRESENTATIVE ONLY **ALL PAINT FINISHES TO HAVE SATIN FINISH**
☒ Digital Scotchprint Graphics (TBD)
☐ White (painted aluminum frame)

MARGARITAVILLE HOTELS & RESORTS

Flagler Beach, FL

DATE: 29-Feb-2024

CUSTOMER: Sun Properties

PROJECT: Compass By MGVL

LOCATION: Flagler Beach / Exterior

111 S. Daytona Ave.

DESCRIPTION: Facade Super Graphic

SALES: G. Stalvey

DESIGNER: M. Donellan

SCALE: 1/4" = 1'-0"

DRAWING: 62458-i1

REVISIONS			
REV	DATE	BY	NOTE
n/a	19-Mar-24	MD	shutterstock artwork

CUSTOMER APPROVAL

©2024 Tyson Sign Company
This design and illustration is the original and unpublished work of Tyson Sign Company, Inc., and it may not be reproduced, copied or exhibited in any fashion without written consent from an authorized officer of our company.

Putting Your Business Out Front!

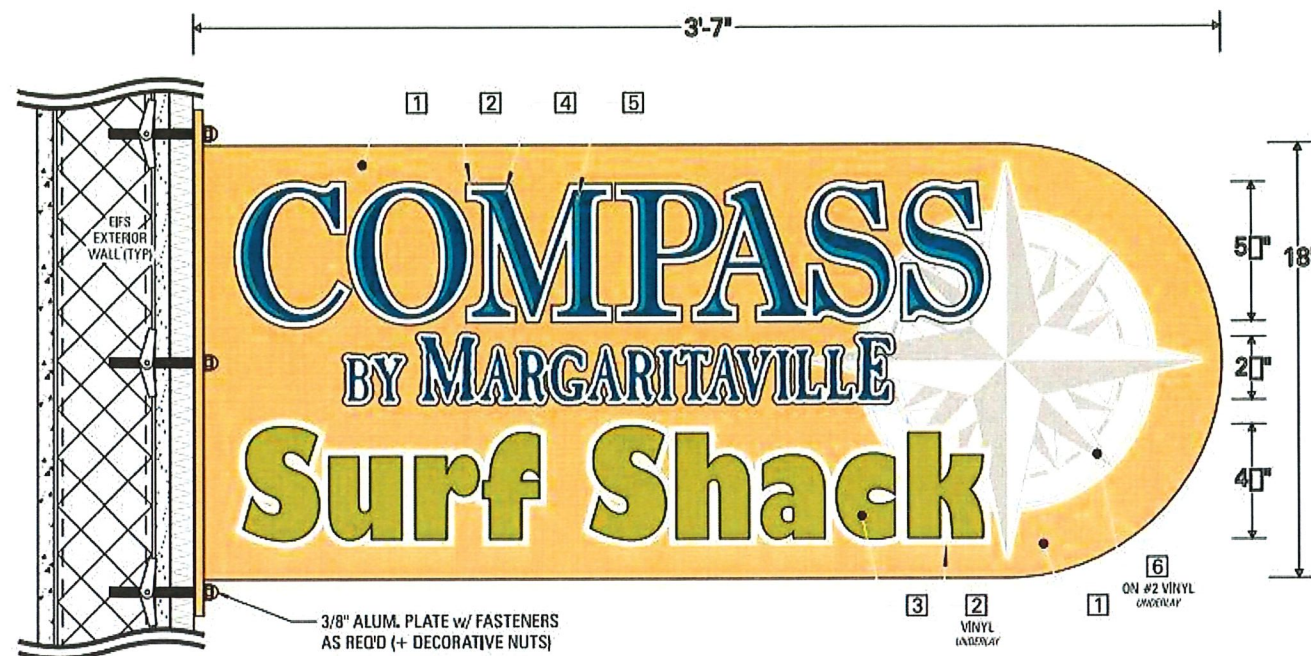
CONTACT INFO
1-843-448-5168
Fax: 843-448-0535
Mail: P.O. Box 50580
Myrtle Beach, SC 29579
www.tysonsign.com

ELECTRIC SIGN MUST BE INSTALLED IN ACCORDANCE WITH ARTICLE 600 OF THE NEC (NATIONAL ELECTRIC CODE)

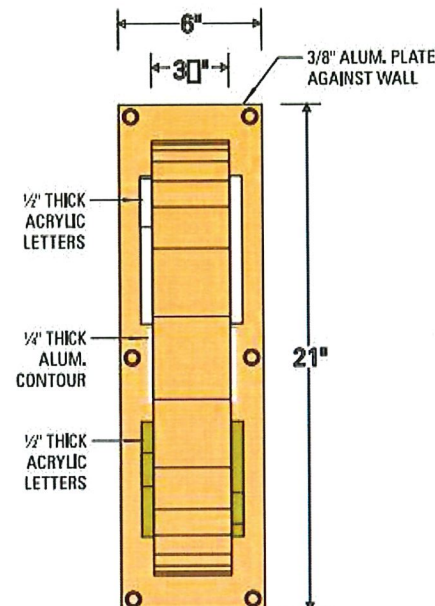
Sign Systems & Structures Association

International Sign Association

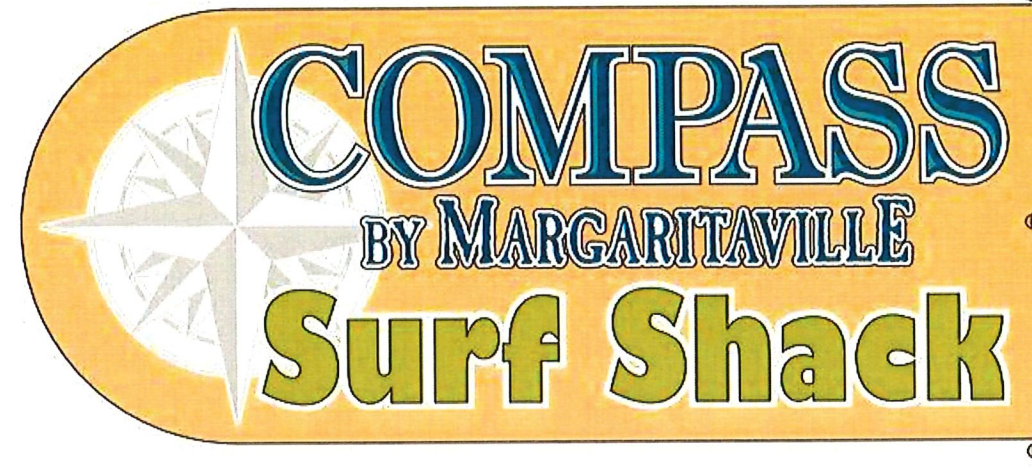
Qty. (1) S/F Non-illum. Facade Super Graphic for North Elevation (Moody Blvd.)



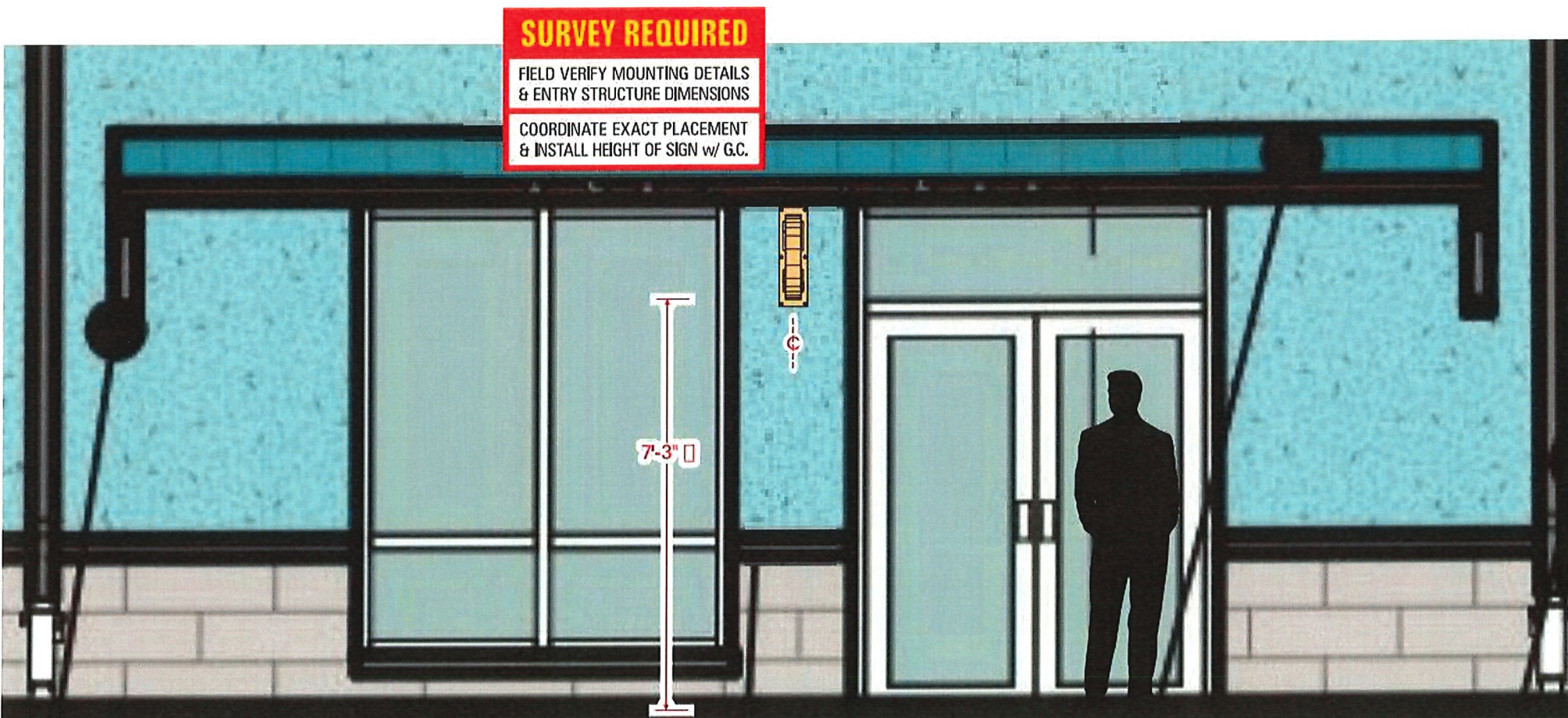
LEFT FACE VIEW
Typical



END VIEW
For Ref. Only



RIGHT FACE VIEW
For Reference Only



INSTALLED Partial East Elevation
For reference only | Scale: 1/4" = 1'-0"

PRODUCTION NOTES

NON-ILLUM. D/F BLADE SIGN:

Fab'd aluminum blade sign (.125 faces + 3" channel frame + 3/8" mounting plate) with painted finish and printed vinyl background 'compass' logo graphic (and white "Surf Shack" contour)

Cut-out 1/2" thick acrylic "Compass" letters, painted white with printed vinyl overlay on faces; flush mount

Cut-out 1/4" plate aluminum "By Margaritaville" contour, painted white with printed vinyl overlay on faces; flush mount

Cut-out 1/2" thick acrylic "Surf Shack" letters, painted red with white vinyl underlay contour; flush mount

INSTALLATION:

Mount blade projecting from building exterior EIFS wall with mechanical fasteners as required (toggle bolts shown, typ.)

COLORS

COLORS SHOWN ARE REPRESENTATIVE ONLY ALL PAINT FINISHES TO HAVE SATIN FINISH

- | | | |
|---|---------------------------------------|-------------------------------|
| 1 | Pantone #1355c (paint) | |
| 2 | White (3M vinyl / paint) | |
| 3 | Pantone #390c (paint) | "Surf Shack" |
| 4 | Pantone #534c (print) | "COMPASS / By Margaritaville" |
| 5 | Pantone #632c (print) | "COMPASS" letter highlights |
| 6 | Pantone #7527c (print on white vinyl) | compass logo |



Flagler Beach, FL

DATE
20-Mar-2024

CUSTOMER
Sun Properties

PROJECT
Compass By MGVI
Flagler Beach / Exterior

LOCATION
111 S. Daytona Ave.

DESCRIPTION
Surf Shack Blade Sign

SALES
G. Stalvey

DESIGNER
M. Donellan

SCALE
1 1/2" = 1' - 0"

DRAWING
62458-j1

REVISIONS

REV	DATE	BY	NOTE

CUSTOMER APPROVAL

©2024 Tyson Sign Company

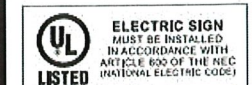
This design and illustration is the original and unpublished work of Tyson Sign Company, Inc., and it may not be reproduced, copied or exhibited in any fashion without written consent from an authorized officer of our company.



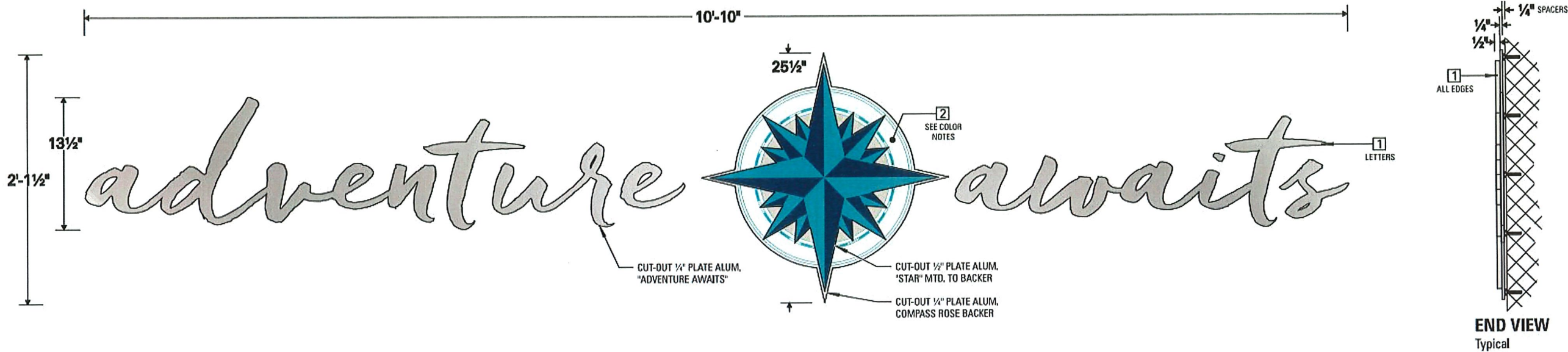
Putting Your Business
Out Front!

CONTACT INFO

1-843-448-5168
Fax: 843-448-0535
Mail: P.O. Box 50580
Myrtle Beach, SC 29579
www.tysonsign.com



Qty. (1) D/F Non-illum. "Compass Surf Shack" Blade Sign for Under Canopy on East Elevtion (S. Central Ave.)



INSTALLED – Partial West Elevation
For Reference Only | Scale: 3/8"=1'-0"

Qty. (1) Set Non-illum. Cut-out "Adventure Awaits" Logo & Letters for West Elevation (S. Daytona Ave.)

PRODUCTION NOTES

"ADVENTURE AWAITS" LETTERS:

– Cut-out 1/4" thick plate aluminum letters with painted finish

COMPASS ROSE LOGO:

– Cut-out 1/4" thick plate aluminum backer with painted finish and digitally printed vinyl graphic overlay

– Additional cut-out 1/2" thick plate aluminum compass star with painted finish and digitally printed vinyl graphic overlay; flush mount to backer

INSTALLATION:

– Mount with 1/4" spacers to front of building over entrance doors as shown (1/4" studs + adhesive, typical)

COLORS COLORS SHOWN ARE REPRESENTATIVE ONLY ALL PAINT FINISHES TO HAVE SATIN FINISH

- 1 Silver AN-811R (metallic paint)
- 2 Reference Colors (digital print on white vinyl):
- Pantone 534
 - Pantone 632
 - Pantone 7527
 - (25%) Pantone 7527



Flagler Beach, FL

DATE

29-Feb-2024

CUSTOMER

Sun Properties

PROJECT

Compass By MGVI

Flagler Beach / Exterior

LOCATION

111 S. Daytona Ave.

DESCRIPTION

"Adventure Awaits"

SALES

G. Stalvey

DESIGNER

M. Donellan

SCALE

1" = 1' - 0"

DRAWING

62458-f1

REVISIONS

REV DATE BY NOTE

CUSTOMER APPROVAL

©2024 Tyson Sign Company

This design and illustration is the original and unpublished work of Tyson Sign Company, Inc., and it may not be reproduced, copied or exhibited in any fashion without written consent from an authorized officer of our company.



Putting Your Business Out Front!

CONTACT INFO

1-843-448-5168

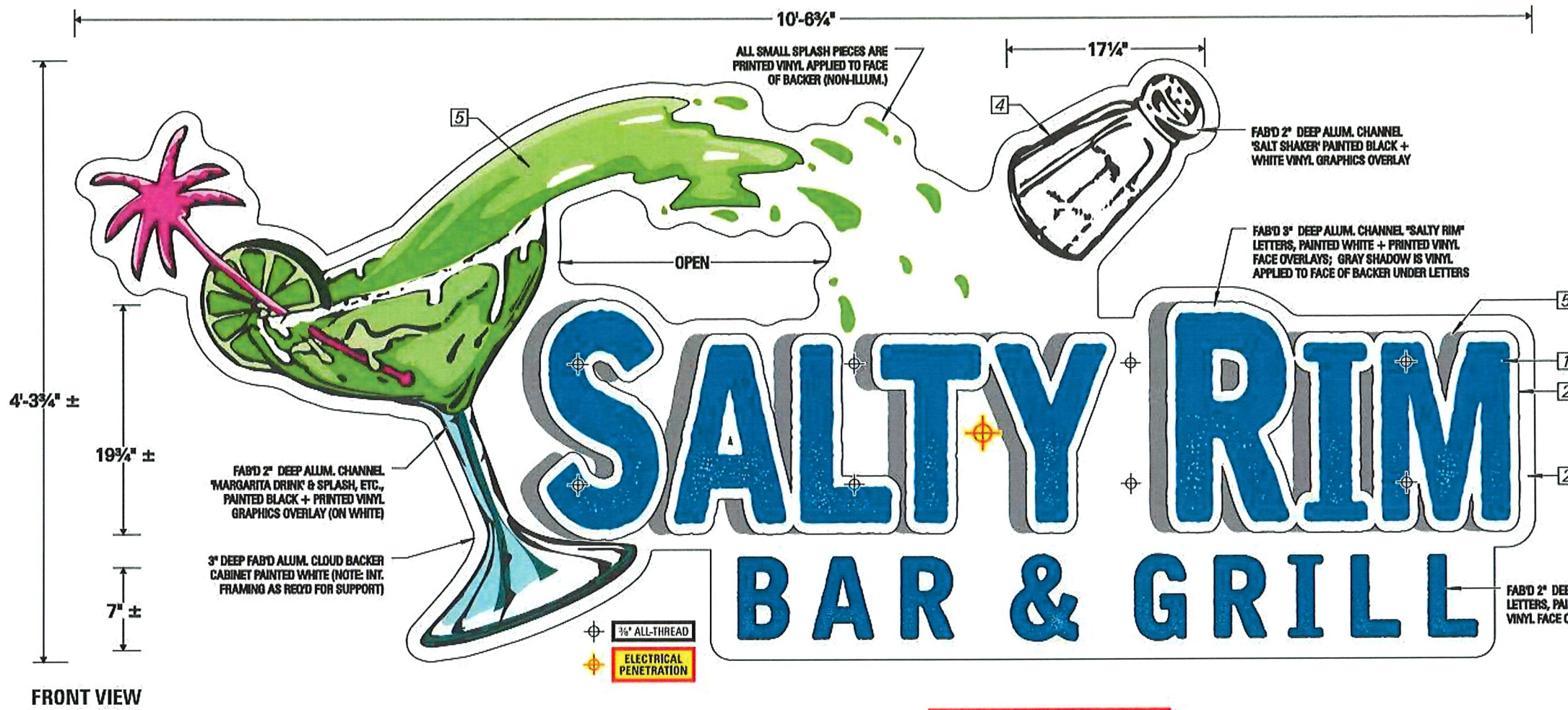
Fax: 843-448-0535

Mail: P.O. Box 50580

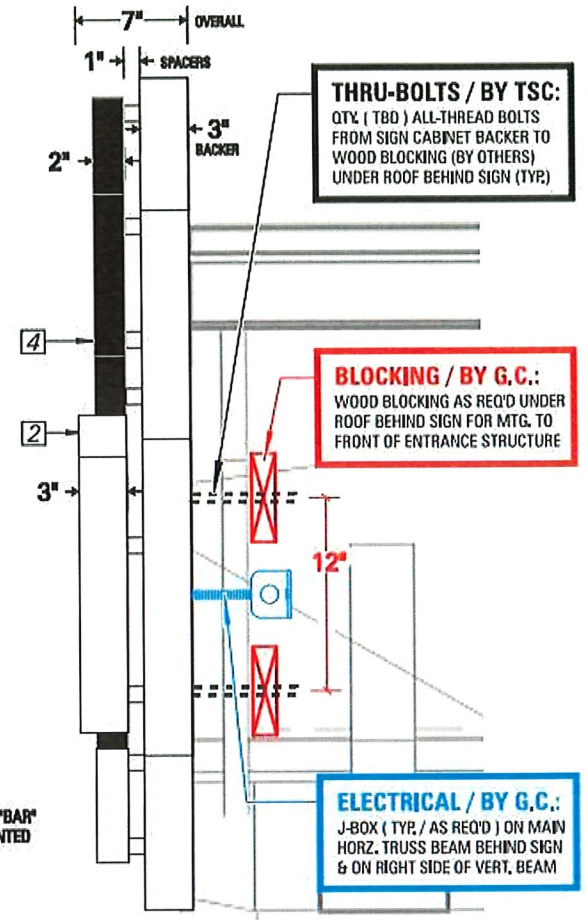
Myrtle Beach, SC 29579

www.tysonsign.com





FRONT VIEW



END VIEW – Partial Section of Terrace Entrance
For reference only | NTS



INSTALLED – Partial East Elevation
For reference only | Scale: 1/4" = 1'-0"



SAME – Partial North Elevation
For reference only | NTS

PRODUCTION NOTES

- QTY. (1) "SALTY RIM BAR & GRILL" SIGN:**
- S/F fab'd aluminum cloud backer cabinet (3" sq. tube + frame + .125" alum. face + .080 back) with painted white finish and printed vinyl graphics details applied to face as indicated
 - Backer cabinet to have internal framing supports for thru-bolt mounting (typical / exact mounting details TBD)
 - Individual sign elements and letters are fab'd aluminum reverse channels (.125 alum. faces + coil stock returns, depths as noted) with painted finish and printed vinyl graphics overlays on faces only (see all call-outs)
 - Amber LED (Turtle Compliant) halo illumination

ELECTRICAL – (1) 120V, 20A Circuit:
NOTE: Amber LED Turtle Compliant Lighting Required
LEDS: (TBD) Amber LEDs
PS: (TBD) 60W

- INSTALLATION:**
- Mount cloud backer cabinet to front gable end of outdoor terrace entrance structure as required (see End View)
 - Exact mounting details TBD and to be coordinated with customer's General Contractor

- COLORS** COLORS SHOWN ARE REPRESENTATIVE ONLY **ALL PAINT FINISHES TO HAVE SATIN FINISH**
- 1 Blue Pantone #301 (print to match)
 - 2 White (paint / 3M vinyl)
 - 3 Green Pantone #373 (print to match)
 - 4 Black (paint / print)
 - 5 Digital Printed Graphics (per McBride artwork)

Flagler Beach, FL

DATE
29-Feb-2024

CUSTOMER
Sun Properties

PROJECT
Compass By MGVL
Flagler Beach / Exterior

LOCATION
111 S. Daytona Ave.

DESCRIPTION
Salty Rim ID

SALES
G. Stalvey

DESIGNER
M. Donellan

SCALE
1" = 1' - 0"

DRAWING
62458-e1

REVISIONS			
REV	DATE	BY	NOTE

CUSTOMER APPROVAL

©2024 Tyson Sign Company

This design and illustration is the original and unpublished work of Tyson Sign Company, Inc., and it may not be reproduced, copied or exhibited in any fashion without written consent from an authorized officer of our company.

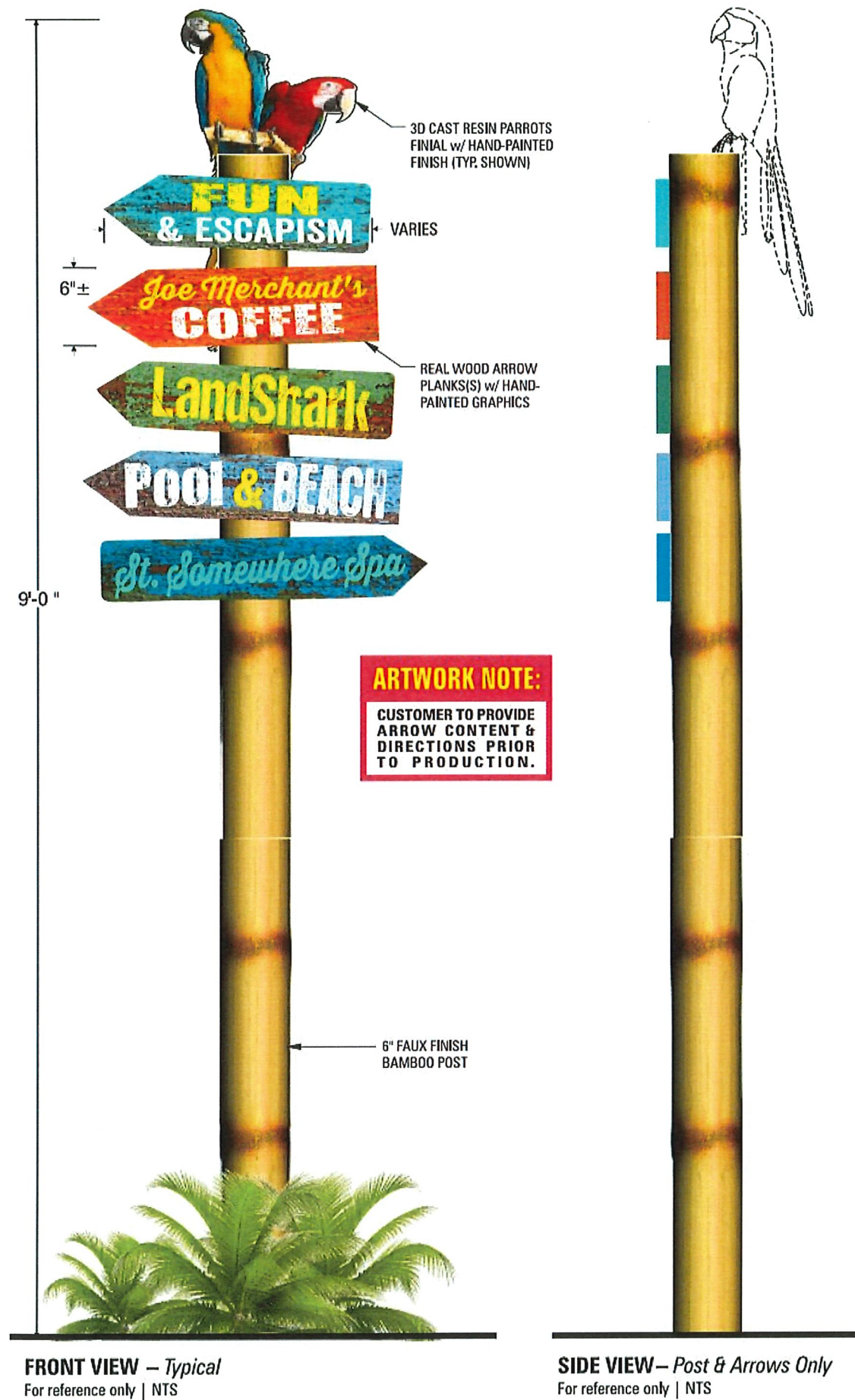
Putting Your Business Out Front!

CONTACT INFO

1-843-448-5168
Fax: 843-448-0535
Mail: P.O. Box 50580
Myrtle Beach, SC 29579
www.tysonsign.com

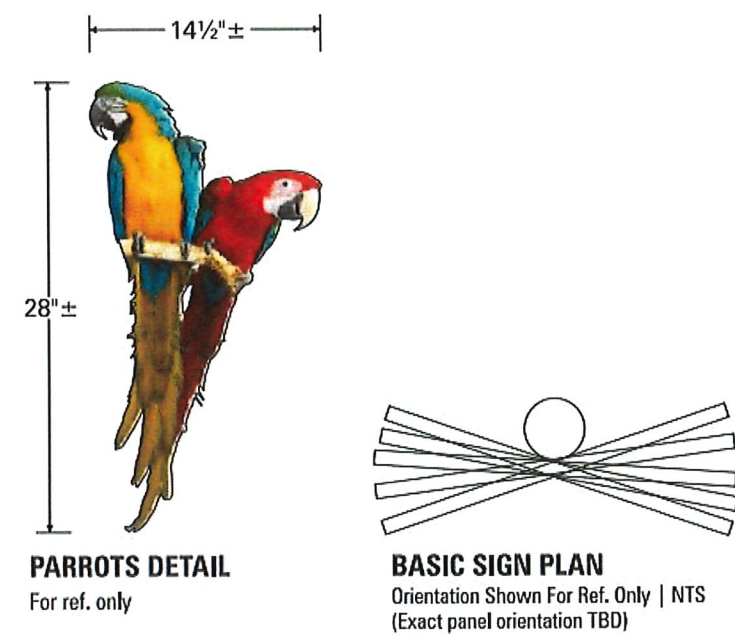
ELECTRIC SIGN
MUST BE INSTALLED
IN ACCORDANCE WITH
ARTICLE 600 OF THE NEC
(NATIONAL ELECTRIC CODE)

Qty. (1) S/F Halo-illum. "Salty Rim Bar & Grill" Sign for Front of Terrace Entry on East Elevtion (S. Central Ave.)



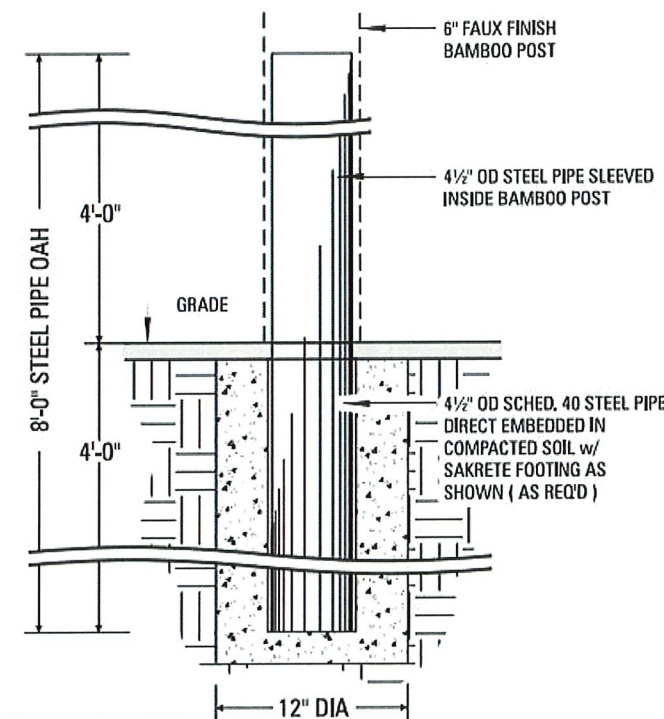
FRONT VIEW – Typical
For reference only | NTS

SIDE VIEW – Post & Arrows Only
For reference only | NTS

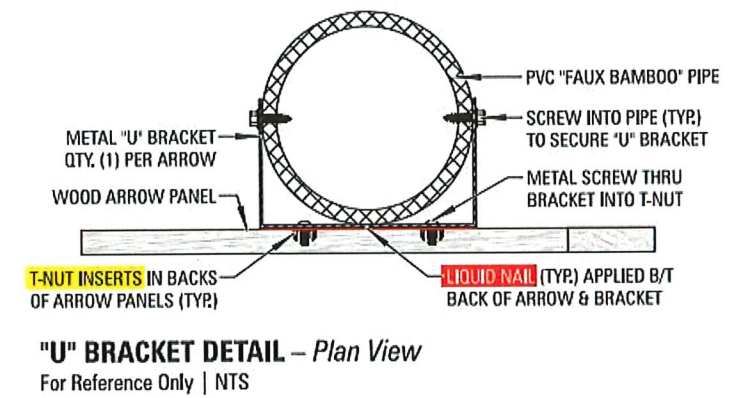


PARROTS DETAIL
For ref. only

BASIC SIGN PLAN
Orientation Shown For Ref. Only | NTS
(Exact panel orientation TBD)



FOOTING DETAIL
Typical / For Ref. Only | NTS



"U" BRACKET DETAIL – Plan View
For Reference Only | NTS

PRODUCTION NOTES

ISLAND STYLE WAYFINDING SIGN:

- Qty. (3) freestanding faux bamboo post (6" PVC, painted) wayfinding signs
- Hand-carved 3-dimensional signfoam parrots finial (carved and painted to match designer's intent)
- Real wood arrow planks with visible wood grain and hand-painted graphics as shown (mount with "U" brackets screwed into post / see detail)

INSTALLATION

- Faux finish bamboo post to sleeve over steel base pipe embedded in ground with Sakrete footing as required (see Installation Detail)

COLORS

COLORS SHOWN ARE REPRESENTATIVE ONLY

- ☒ 3D parrots coloring to match designer's intent
- ☒ Arrow plank color to match designer's intent

NOTE: ARROW COLORS w/ VISIBLE WOOD GRAIN:

PROCESS YELLOW	WHITE	PMS 100
PMS WARM RED	BLACK	PMS 375
PROCESS BLUE	PMS 315	PMS 343

Flagler Beach, FL

DATE

30-May-2024

CUSTOMER

Sun Properties

PROJECT

Compass By MGVI

Flagler Beach / Exterior

LOCATION

111 S. Daytona Ave.

DESCRIPTION

Wayfinding Signs

SALES

G. Stalvey

DESIGNER

B. Paul

SCALE

1" = 1' - 0"

DRAWING

62458-k1

REVISIONS

REV	DATE	BY	NOTE

CUSTOMER APPROVAL

©2024 Tyson Sign Company

This design and illustration is the original and unpublished work of Tyson Sign Company, Inc., and it may not be reproduced, copied or exhibited in any fashion without written consent from an authorized officer of our company.

Putting Your Business Out Front!

CONTACT INFO

1-843-448-5168

Fax: 843-448-0535

Mail: P.O. Box 50580

Myrtle Beach, SC 29579

www.tysonsign.com

ELECTRIC SIGN
MUST BE INSTALLED IN ACCORDANCE WITH ARTICLE 600 OF THE NEC (NATIONAL ELECTRIC CODE)

SSA
Sign Systems Association

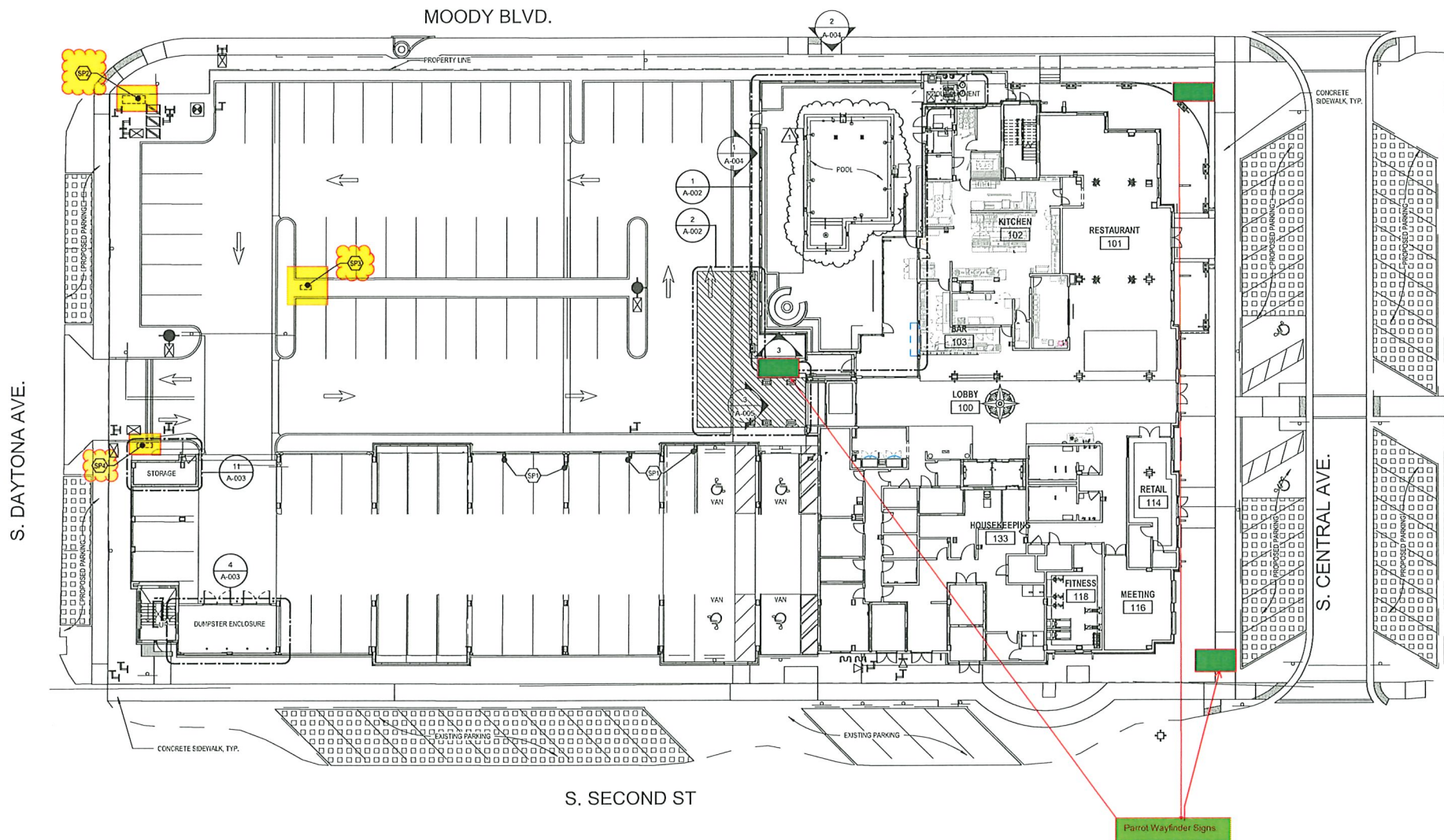
ISA
International Sign Association

Qty. (3) Island Style Post-mounted Wayfinding Signs



1. ARCHITECTURAL SITE PLAN SHOWN FOR REPRESENTATION ONLY. PLEASE REFER TO CIVIL AND LANDSCAPE DRAWINGS FOR MORE INFORMATION ON SITE CONSTRUCTION, PARKING, LANDSCAPING, ETC.

KEYNOTES - SITE	
Key Value	Keynote Text
SP1	ELECTRIC VEHICLE CHARGING STATIONS
SP2	GROUND LEVEL MONUMENT SIGN
SP3	GROUND LEVEL DIRECTIONAL EXIT SIGN
SP4	GROUND LEVEL DIRECTIONAL ENTRANCE SIGN



1 ARCHITECTURAL SITE PLAN
1/16" = 1'-0"

