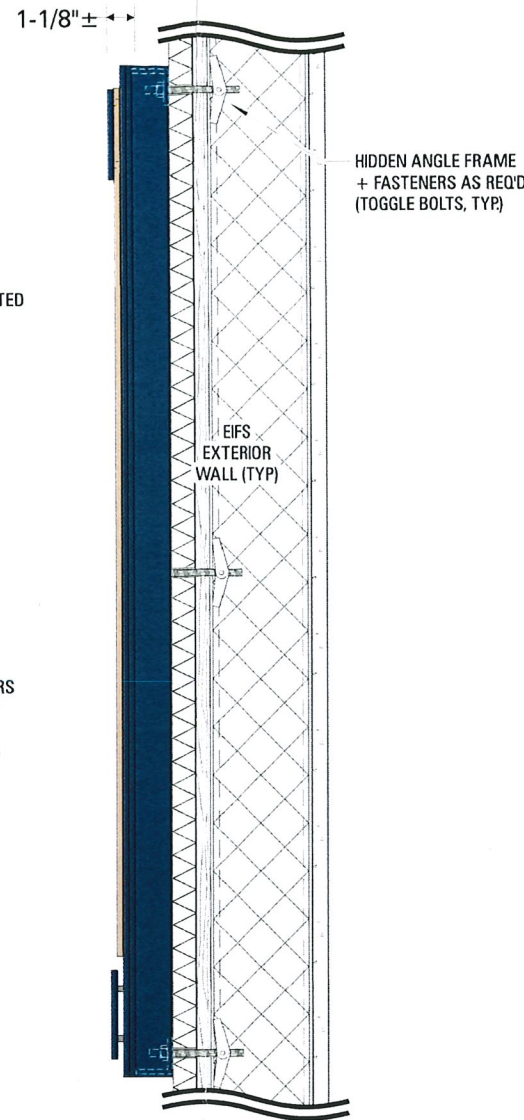
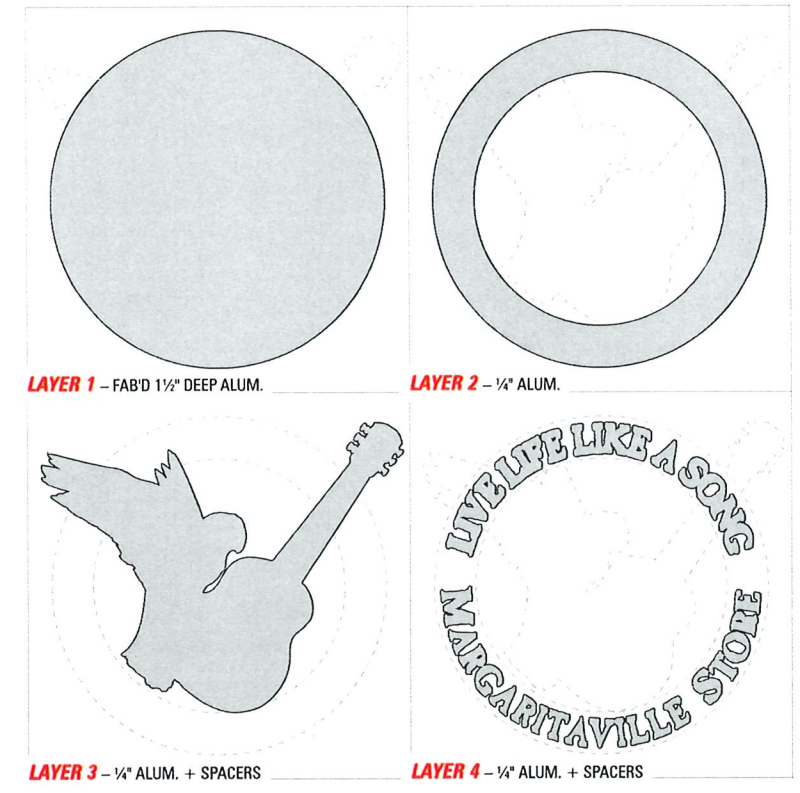




- 1/4" ALUM. PARROT/GUITAR
PTD. PMS 466 + PRINTED
VINYL OVERLAY GRAPHICS
LAYER 3
- FAB'D 1/2" DEEP ALUM.
REV. CHANNEL BACKER
PTD. PMS 7463 + PRINTED
VINYL GRAPHICS ON FACE
LAYER 1
- 1/4" ALUM. OUTER RING
PTD. PMS 7463 + PRINTED
VINYL GRAPHICS ON FACE
LAYER 2
- 1/4" ALUM. CUT-OUT LETTERS
& SHADOWS (COMBINED)
PTD. PMS 7463 + PRINTED
VINYL GRAPHICS ON FACES
LAYER 4



END VIEW
Typical



LAYER DETAILS
For Reference Only – NTS

PRODUCTION NOTES

QTY. (1) S/F NON-ILLUM. WALL SIGN:

- LAYER 1** – Fab'd 1/2" deep aluminum circular backer (shoebox construction: .125 face + .080 filler + 1/2" alum. angle mounting frame, not shown) with painted finish and digitally printed vinyl graphics
- LAYER 2** – Cut-out 1/4" plate alum. outer ring with painted finish and digitally printed vinyl graphics (inc. "®" mark for "MGVL" letters); mount flush to backer
- LAYER 3** – Cut-out 1/4" plate alum. parrot/guitar with painted finish and digitally printed vinyl graphics; mount with spacers over center back section (as req'd) and flush over outer ring
- LAYER 4** – Cut-out 1/4" plate alum. letters (combined shape inc. outlines/shadows) with painted finish and digitally printed vinyl graphics; mount with spacers standing off outer ring and flush over parrot/guitar sections

INSTALLATION:
– Sign mounts flush against exterior EIFS wall next to retail entrance as shown with mechanical fasteners (see End View)

- COLORS** COLORS SHOWN ARE REPRESENTATIVE ONLY
- PMS 100@50% (print to match)
 - PMS 325 (print to match)
 - PMS 7463 (print/paint to match)
 - PMS 466 (paint to match)
 - ⊗ Digitally printed graphics (match design intent)



INSTALLED – Partial Retail Elevation
For Reference Only | NTS

INSTALL NOTE:
COORDINATE EXACT PLACEMENT
& INSTALL HEIGHT OF SIGN w/ G.C.

Qty. (1) S/F Non-illum. "Margaritaville Store" Layered Alum. Wall Sign for East Elevation (S. Central Ave.)

Flagler Beach, FL
DATE

26-Sep-2024
CUSTOMER

Sun Properties
PROJECT

Compass By MGVL
Flagler Beach / Exterior
LOCATION

111 S. Daytona Ave.
DESCRIPTION

MGVL Store Sign
SALES

G. Stalvey
DESIGNER

M. Donellan
SCALE

1 1/2" = 1' - 0"
DRAWING

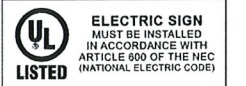
62458-11
REVISIONS

REV	DATE	BY	NOTE

©2024 Tyson Sign Company
This design and illustration is the original and unpublished work of Tyson Sign Company, Inc., and it may not be reproduced, copied or exhibited in any fashion without written consent from an authorized officer of our company.



1-843-448-5168
Fax: 843-448-0535



WORK AUTHORIZATION

94281
JOB

Compass-Flagler Beach/EXT
DATE

26-SEP-24
FILE

REV	DATE	BY	NOTE