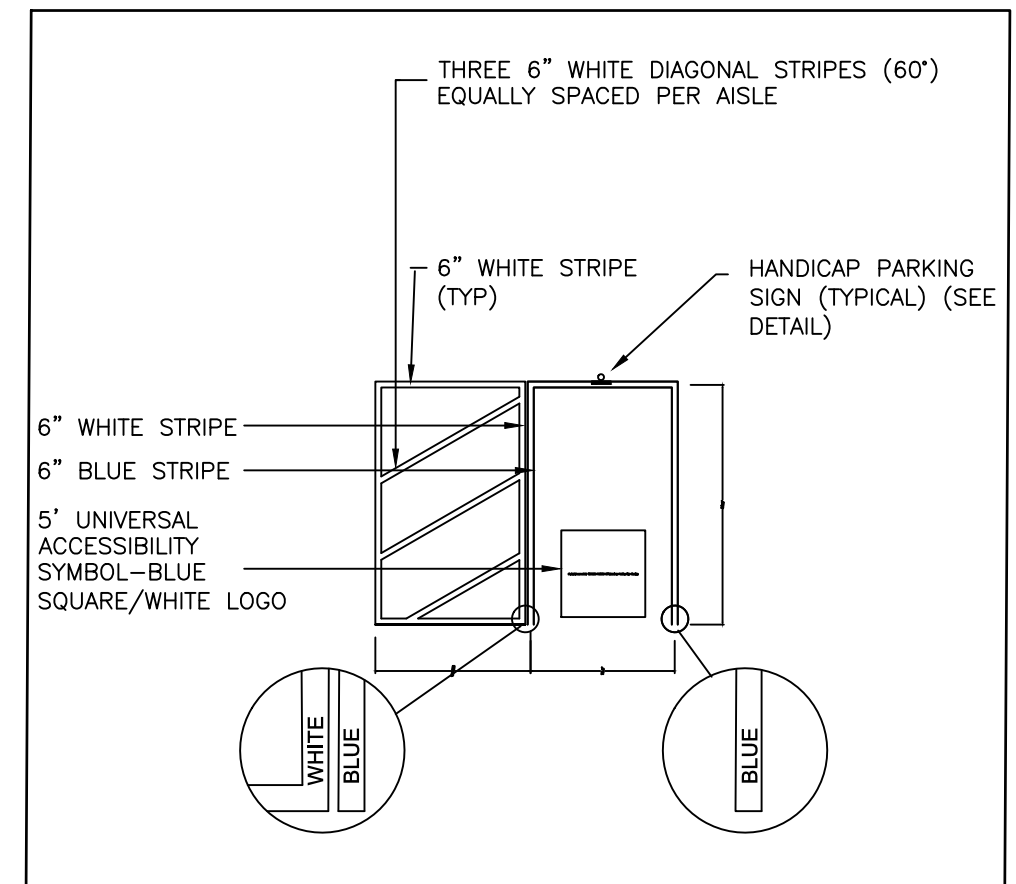
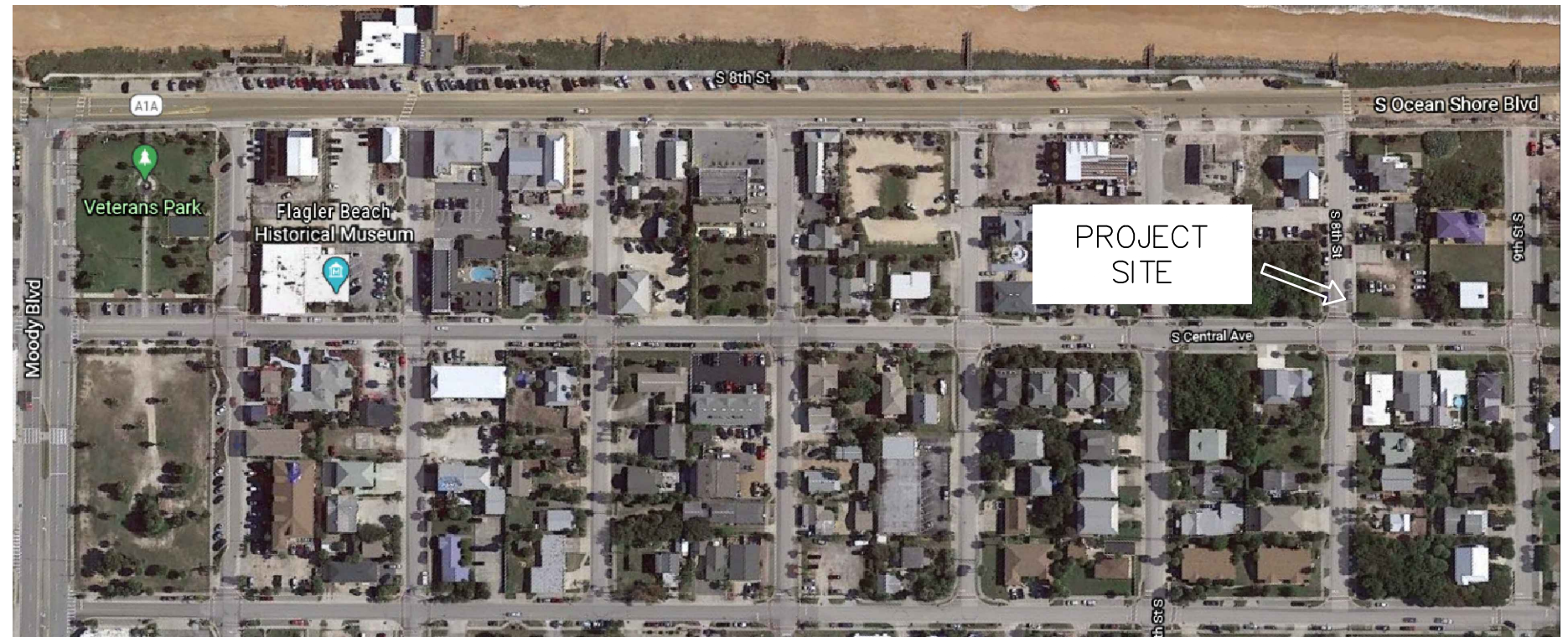


# BASIC SCOPE OF WORK

1. REMOVE ALL WHEEL STOPS EXCEPT THE TWO HANDICAP STOPS. DO NOT DISCARD UNTIL THEY ARE INSPECTED BY THE PROJECT MANAGER.
2. REMOVE 12" OF SURFACE MATERIAL WITHIN THE "LIMITS OF PAVERS" AS SHOWN ON THE DRAWINGS.
3. COMPACT THE SUBGRADE BASE TO 95% MAX. STANDARD PROCTOR DENSITY (ASTM D698).
4. GRADE SUB-SURFACE AT 1% (~1/8" PER FOOT) TO THE APPROXIMATE SLOPE DIRECTIONS SHOWN ON THE PLAN TOWARD EXISTING STORMWATER DETENTION AREA
5. ADD GEOTEXTILE FABRIC OVER ENTIRE EXCAVATED AREA AND SIDES.
6. ADD A MINIMUM 8" OF COMPACTED AGGREGATE GRAVEL.
7. INSTALL EDGE RESTRAINT AS SHOWN ON DRAWINGS.
8. ADD 1" BEDDING LAYER, CONFORMING TO ASTM C33 WITH MAXIMUM 1% PASSING A NO. 200 SIEVE.
9. INSTALL OPEN-CELLED PAVERS IN RUNNING BOND PATTERN ENSURING THAT ALL UNITS MAINTAIN STRAIGHT PATTERN LINES.
10. FILL ALL GAPS, VOIDS, AND PAVER OPENINGS WITH CRUSHED GRAVEL.
11. REPLACE WHEEL STOPS THAT ARE DEEMED ADEQUATE BY PM. PURCHASE/INSTALL NEW WHEEL STOPS TO REPLACE THOSE THAT DO NOT PASS THE PM'S INSPECTION.
12. POWER WASH HANDICAP CONCRETE PAD. REPAINT HC DECAL AND STALL LINES AS SHOWN ON DRAWINGS.
13. PAINT REGULAR STALL LINES AS SHOWN ON DRAWINGS.
14. PROVIDE STUB-OUTS FOR WATER AND SANITARY FOR FUTURE TOILET ROOMS. SEE PLANS FOR LOCATIONS OF LATERALS AND RISERS. CALL 811 TO PROVIDE LOCATES OF WATER AND SANITARY MAINS.



**1 HANDICAP PARKING DETAIL**  
Scale: 3/4"=1'



## REFURBISHMENT OF CITY PARKING LOT 3

LOCATED AT  
**S. 8TH ST & S. CENTRAL AVENUE**  
**CITY OF FLAGLER BEACH**

SEPTEMBER 2024

**1** OF **3**