

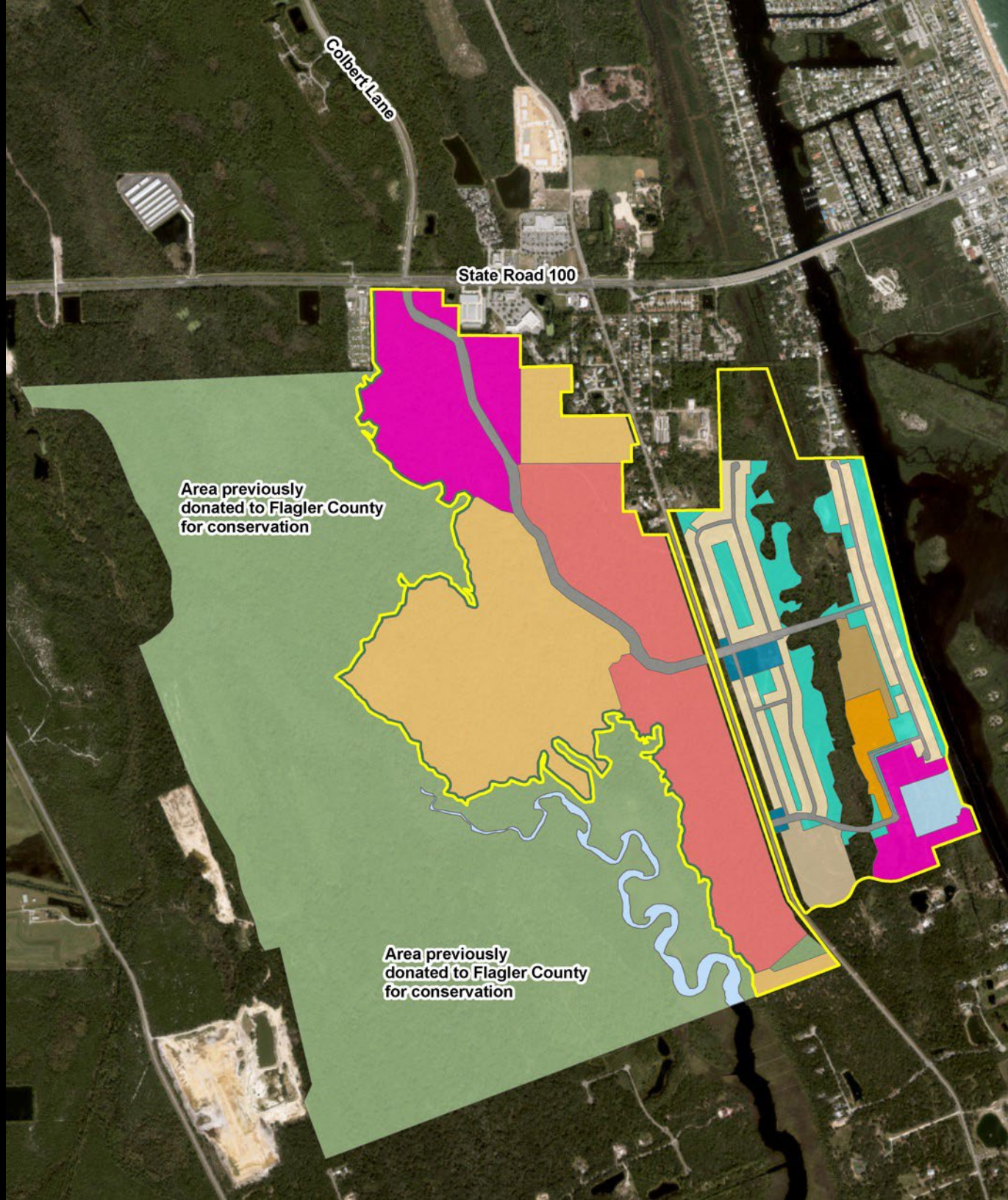
INTRODUCING



VERANDA
— B A Y —

at Flagler Beach

*Veranda Bay is a proposed Master-Planned Residential Community
that will include a marina village and world-class amenities
all within a 3-minute drive to Flagler Beach.*



Colbert Lane

State Road 100

Area previously
donated to Flagler County
for conservation

Area previously
donated to Flagler County
for conservation



Marina del Palma



Marina del Palma



Marina del Palma



Palm Coast Plantation



Palm Coast Plantation



Palm Coast Plantation



VERANDA — B A Y —

at Flagler Beach

PROPOSED AMENITIES




VERANDA
— BAY —



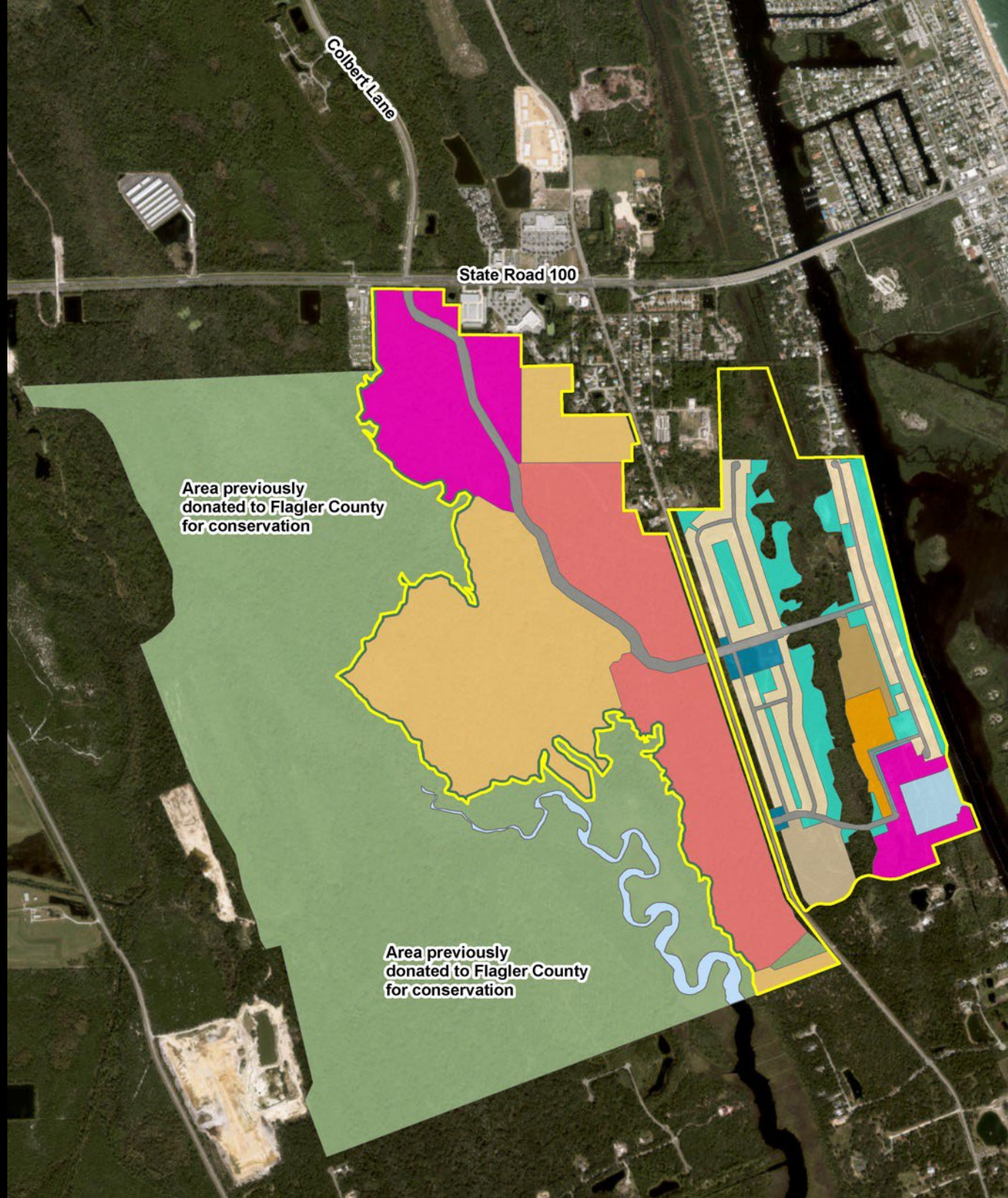



VERANDA
BAY







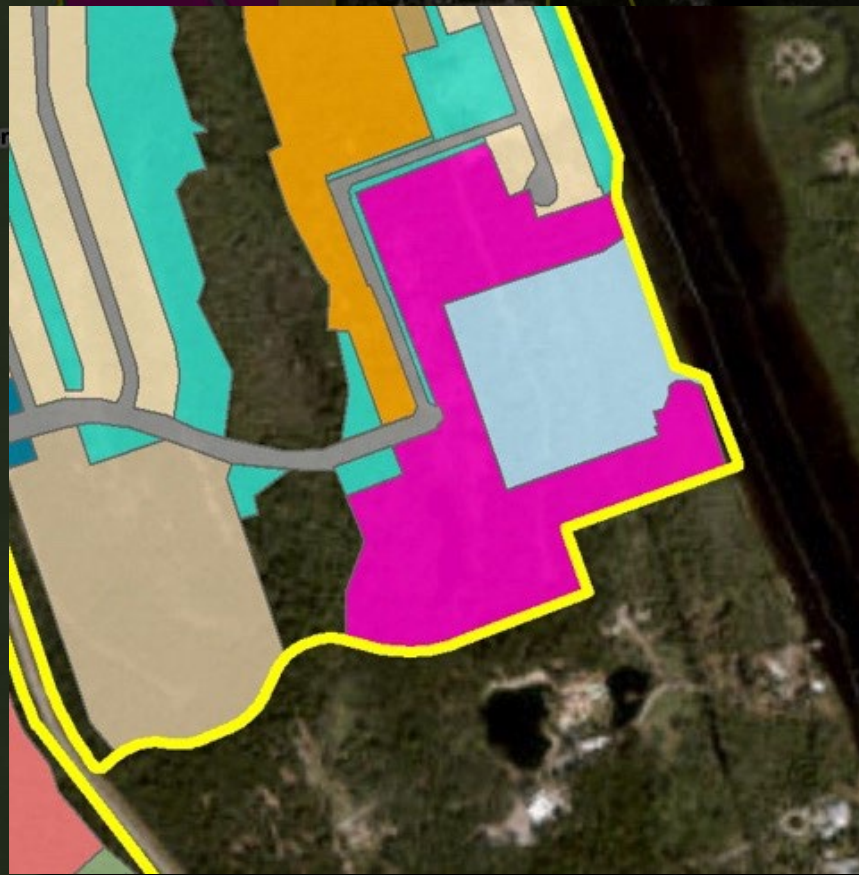
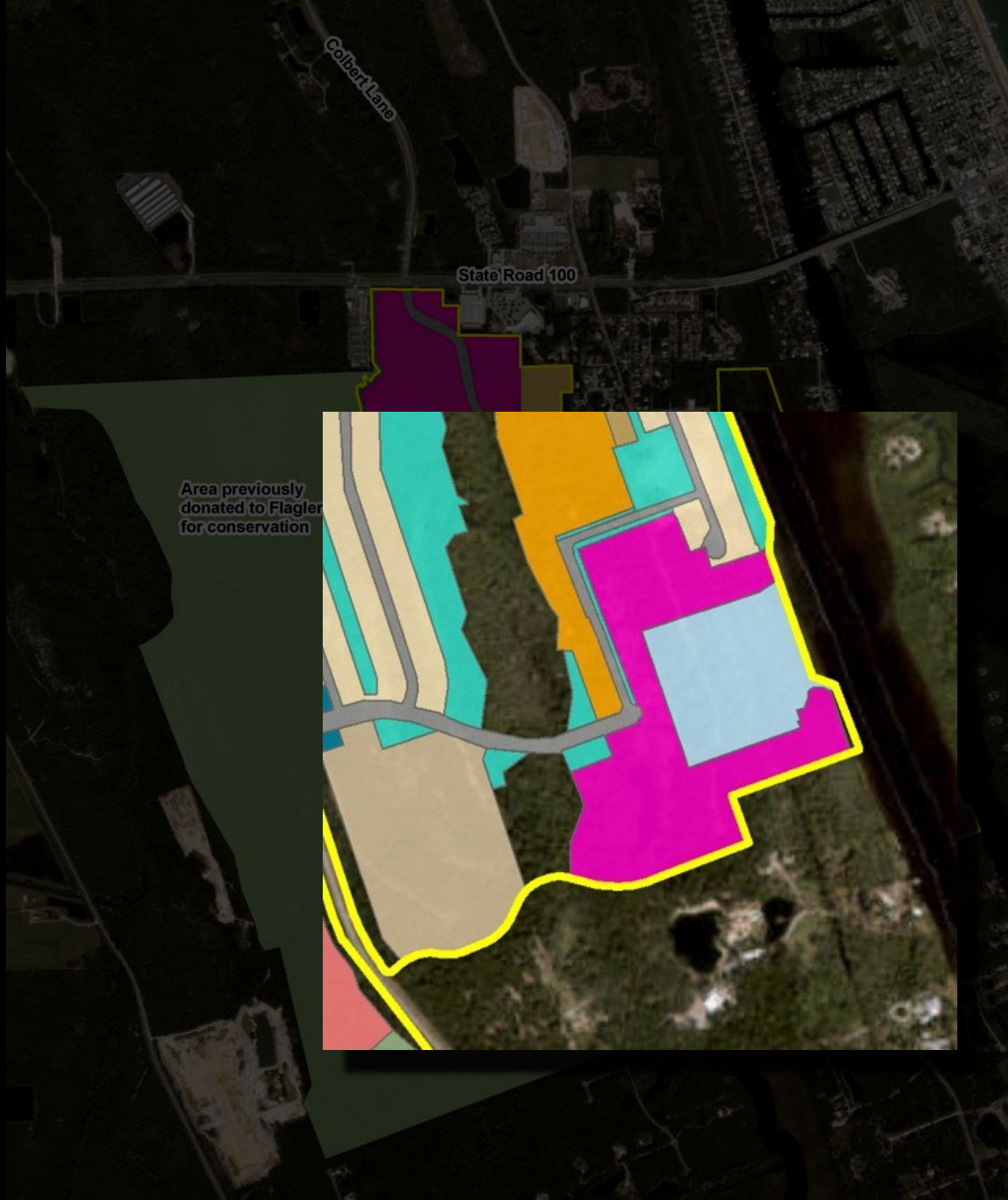


Colbert Lane

State Road 100

Area previously
donated to Flagler County
for conservation

Area previously
donated to Flagler County
for conservation



Area previously
donated to Flagler
for conservation

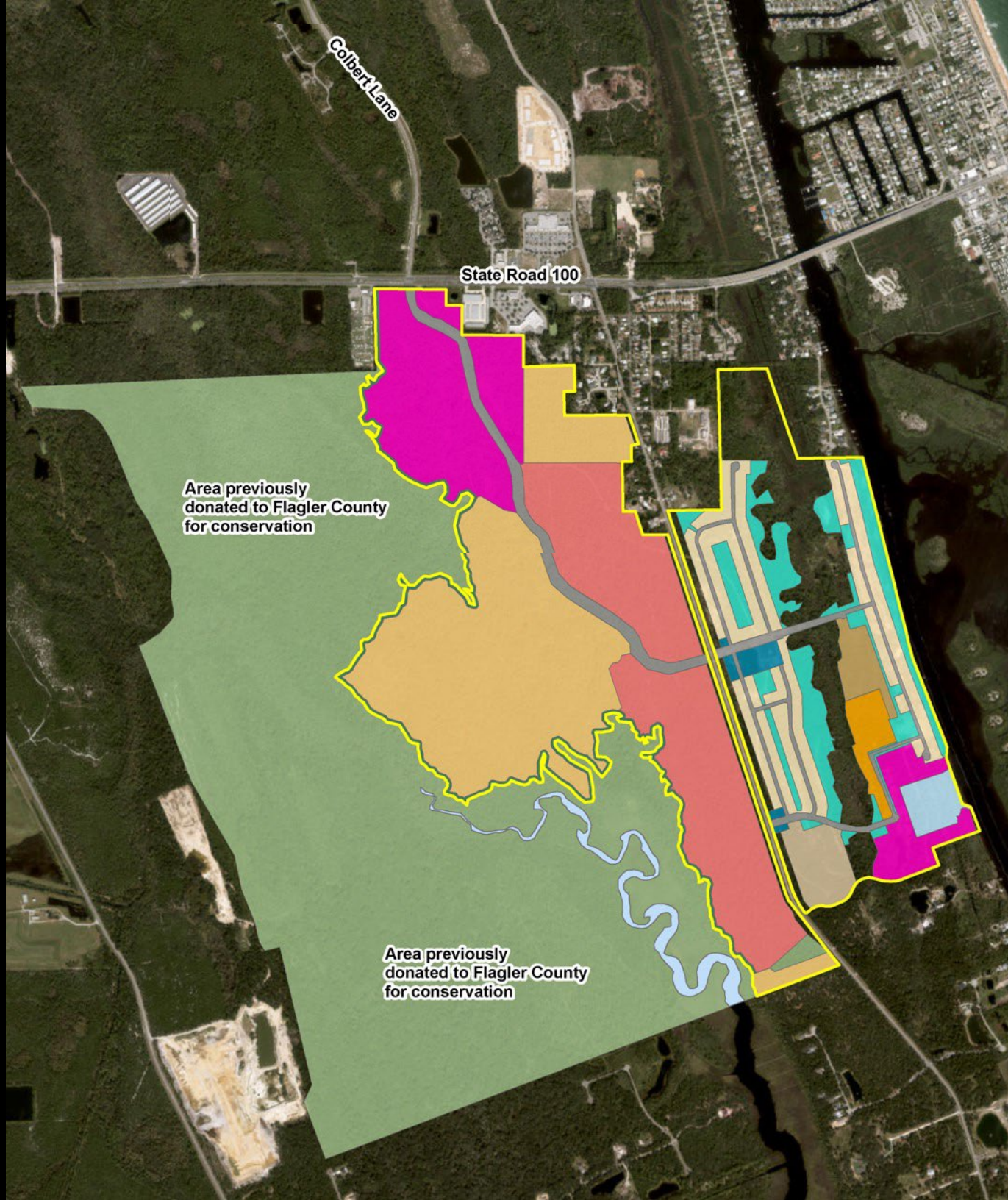
THE MARINA VILLAGE AT VERANDA BAY









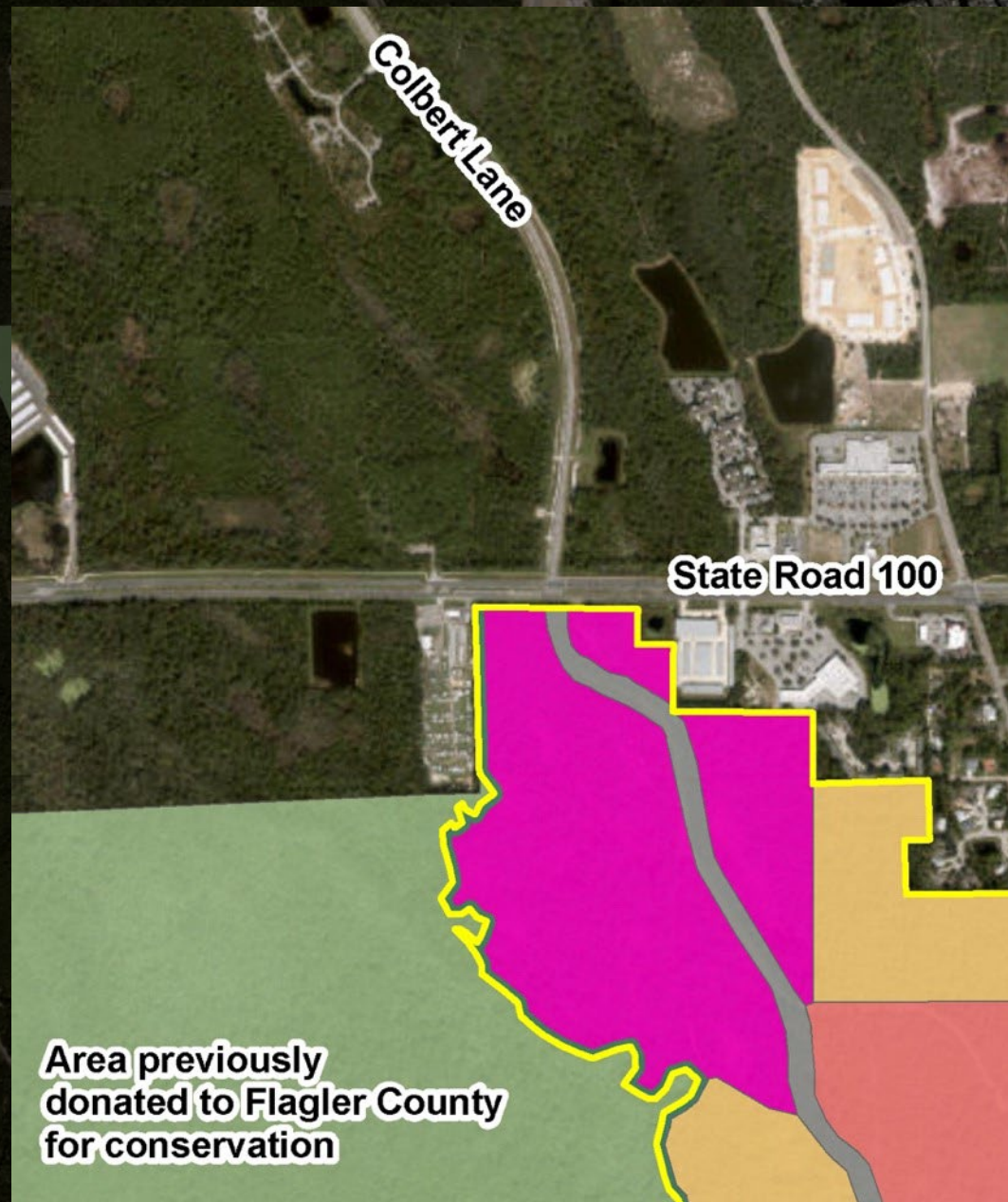


Colbert Lane

State Road 100

Area previously
donated to Flagler County
for conservation

Area previously
donated to Flagler County
for conservation



Area previously
donated to Flagler County
for conservation



SUMMER —TOWN—

A true shopping and dining destination in Flagler Beach







SUMMER
—TOWN—



SUMMER
—TOWN—





SUMMER
—TOWN—







SUMMER
—TOWN—



at Flagler Beach



at Flagler Beach

