



Ammann Road Reconstruction Project



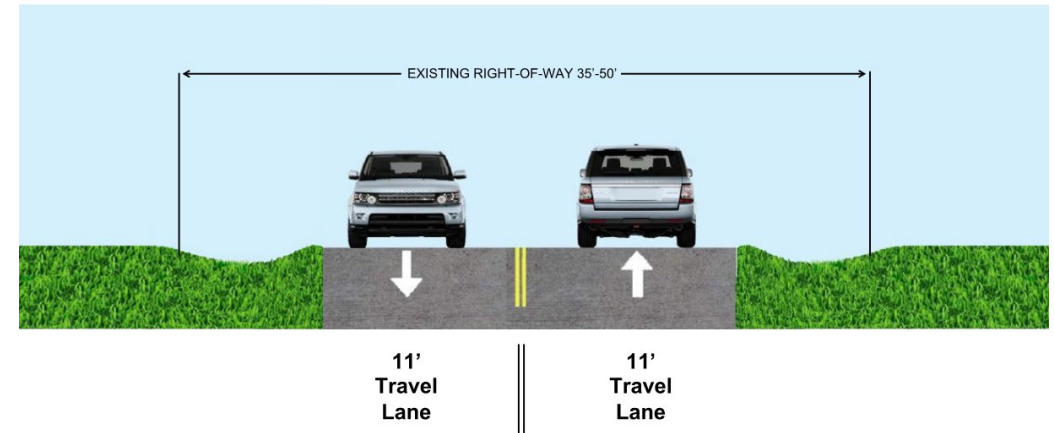
Overview

- ▶ Scope of work
- ▶ Project Map
- ▶ 2 Low Water Crossings identified
- ▶ 3 Options at each crossing
 - 5-, 10-, 25-year
- ▶ Cost for each crossing option
- ▶ List of potentially affected parcels

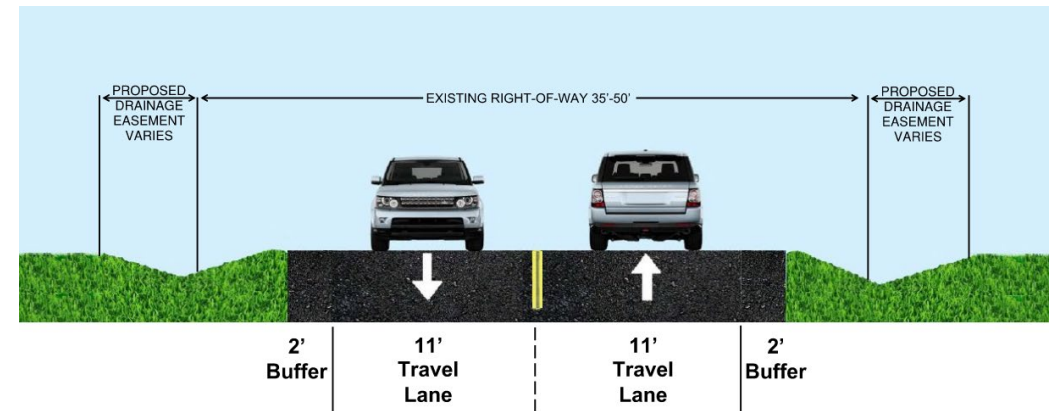
Scope of Work



- ▶ 2.17 mi Roadway Reconstruction
 - 2-11' lanes with 2' buffers on each side
 - Safety improvements
 - Parallel ditches
 - Drainage improvements



Ammann Road Existing Conditions



Ammann Road Proposed Improvements

Project Map



Low Water Crossing C1

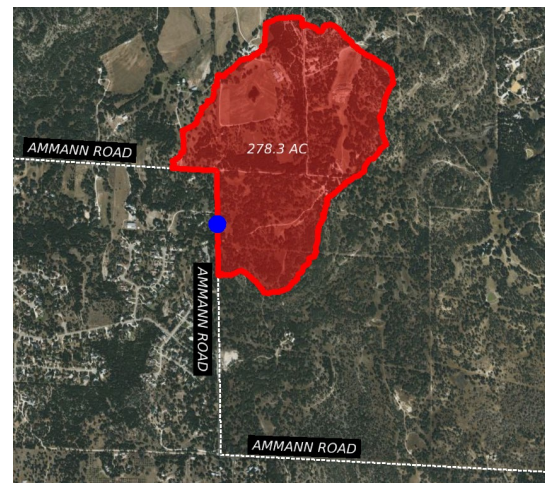


► Location

- By Sunny Oaks Pet Resort
- Approx. 1000' South of City Limits

► Existing Conditions

- 1-18" RCP
- Overtopping and ponding issues
- LOS (Level of Service) is less than 2-years

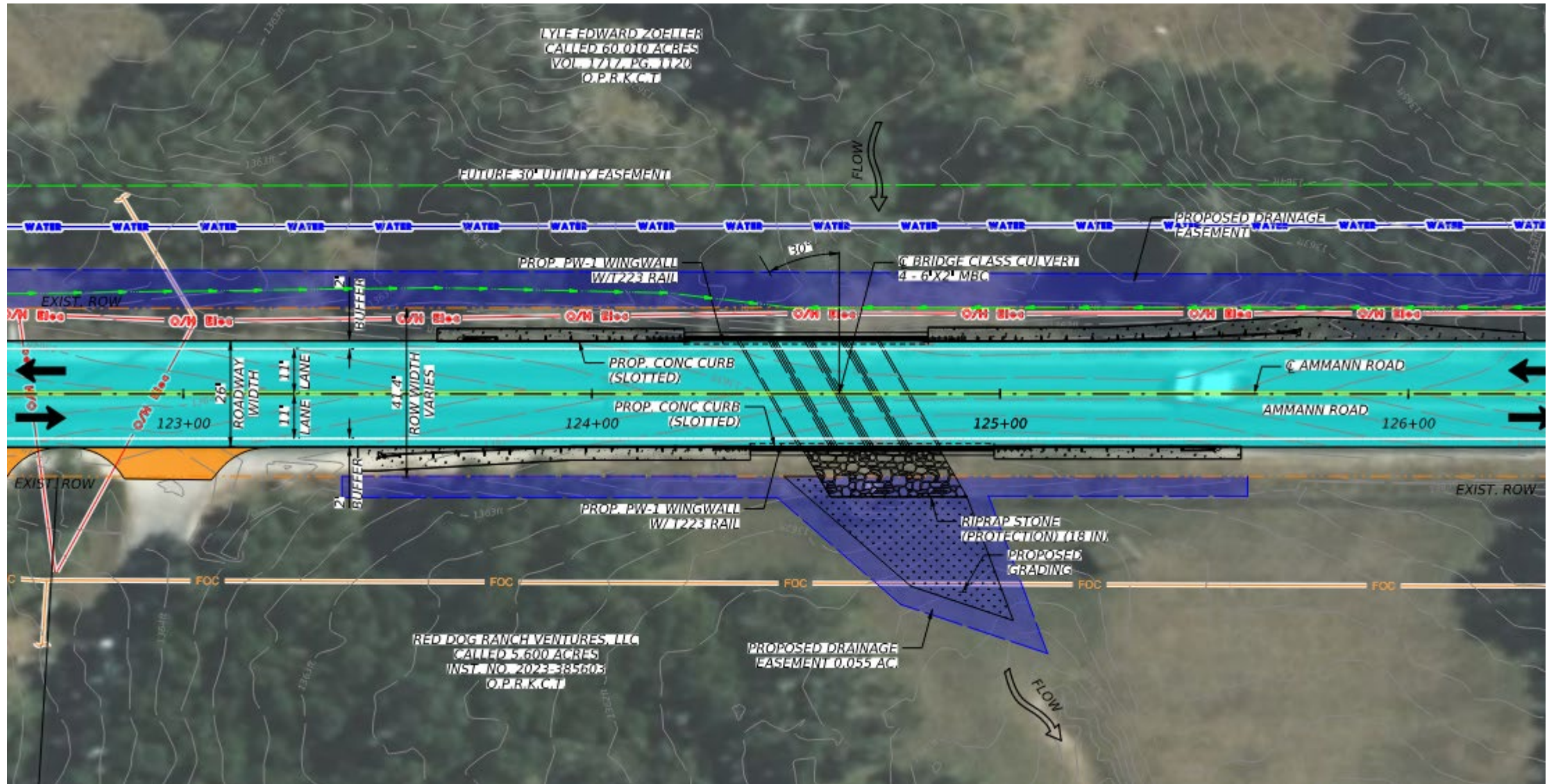


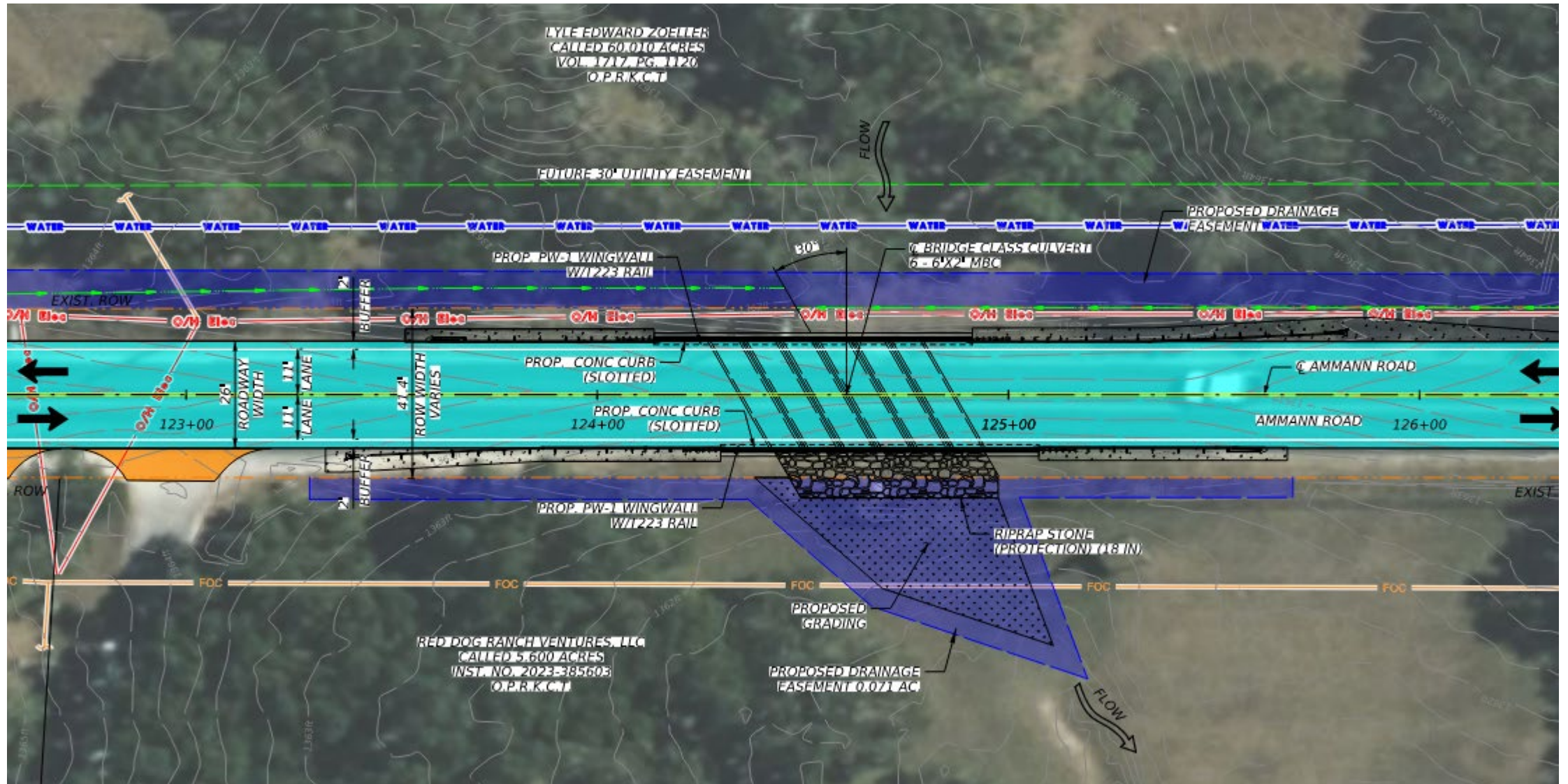


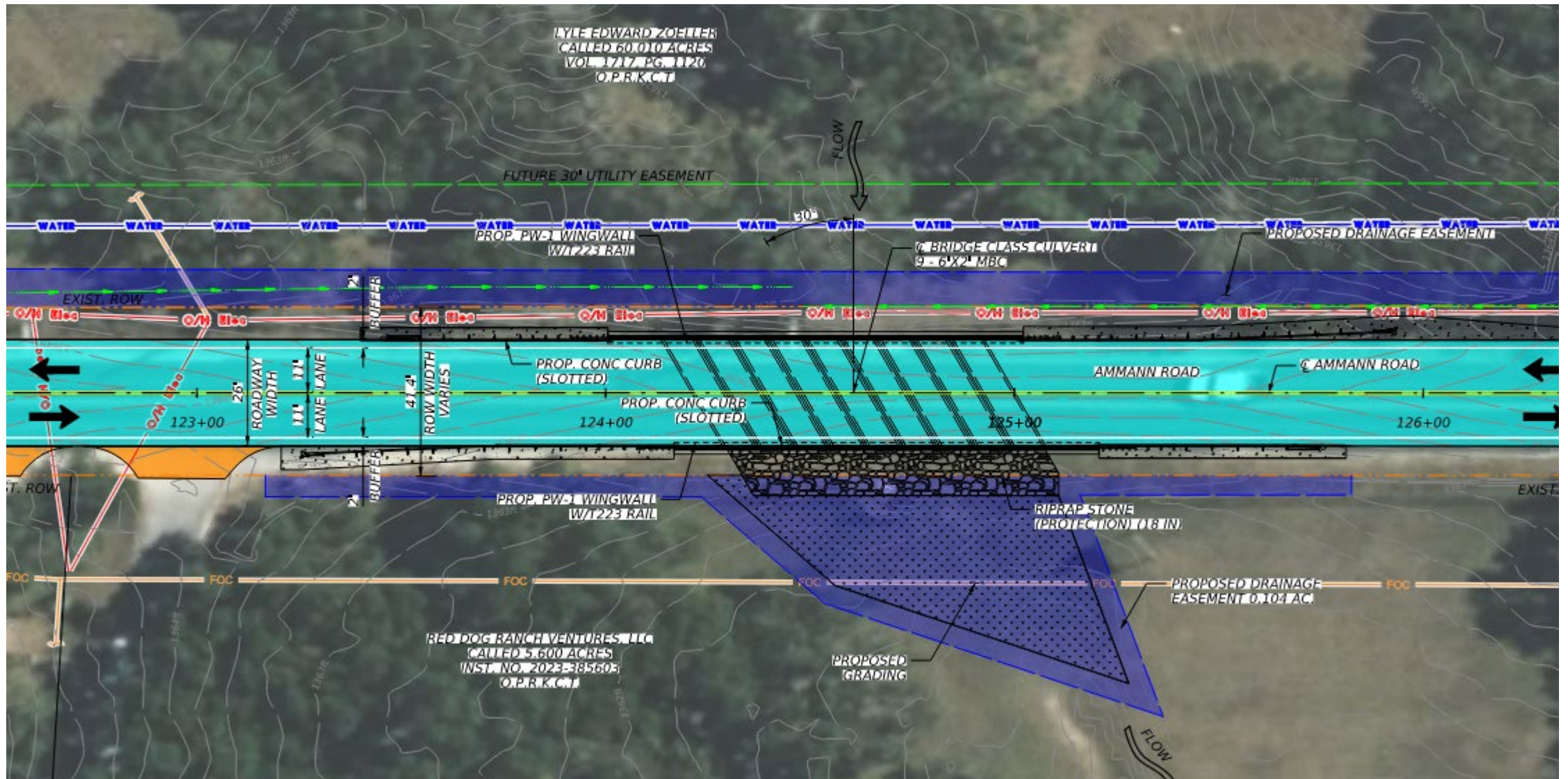
Low Water Crossing C1

Impact type	Option 1 (5-yr LOS)	Option 2 (10-yr LOS)	Option 3 (25-yr LOS)
Culvert Size	*4-6'x2' MBCs	*6-6'x2' MBCs	*9-6'x2' MBCs
Rail Type	Concrete Traffic Rail on both sides		
End condition	Metal Beam Guard Fence on both sides		
Erosion control	Rock riprap at the downstream w/grading within proposed easement on either sides		
<u>Cost</u>	<u>\$233,619</u>	<u>\$289,915</u>	<u>\$373,600</u>

*Culvert sizing and cost are subject to change as design progresses







Low Water Crossing C2



► Location

- Approx. 850' North of Ranch Pass

► Existing Conditions

- 1-18" RCP
- Overtopping and ponding issues
- LOS (Level of Service) is less than 2-years

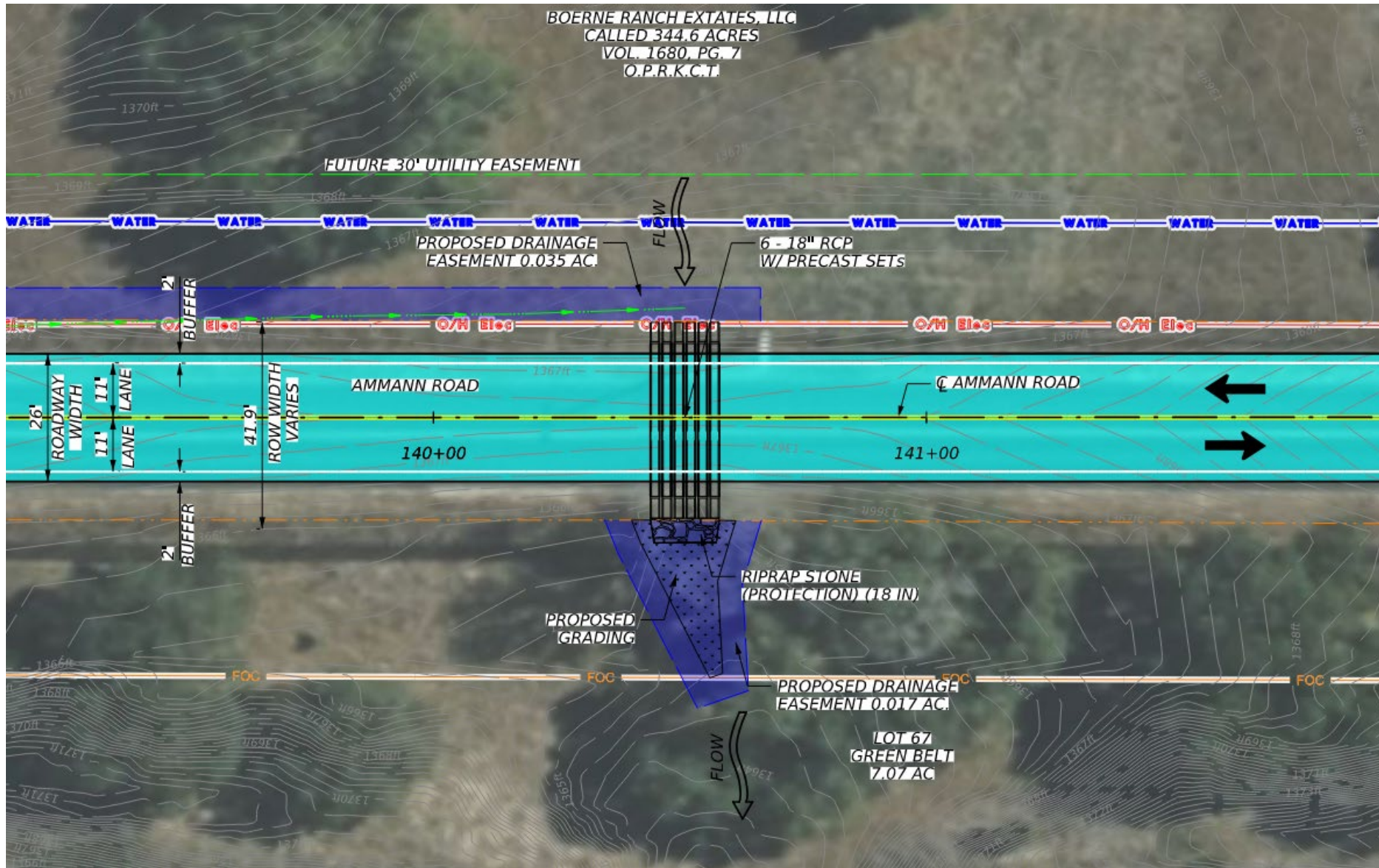


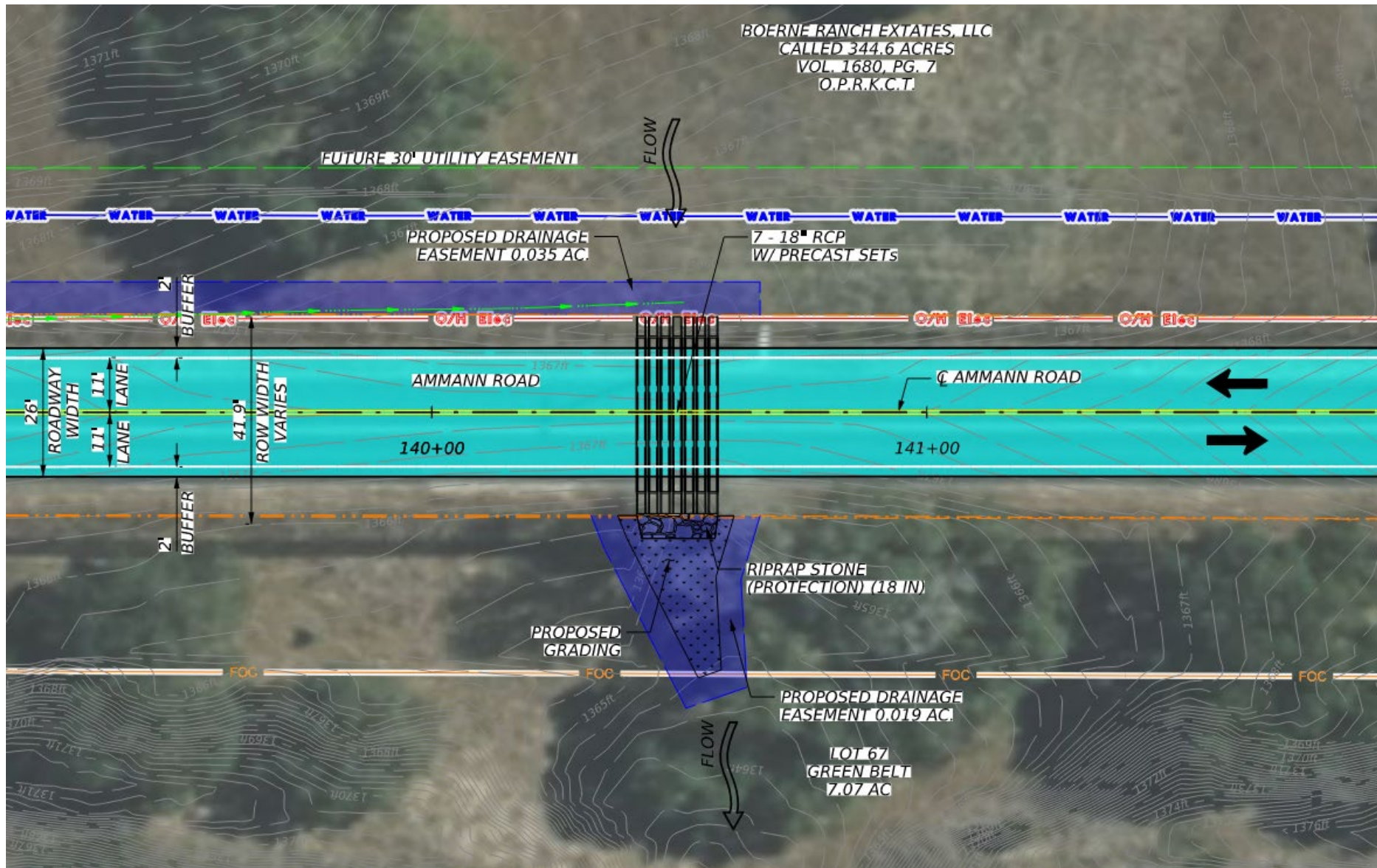


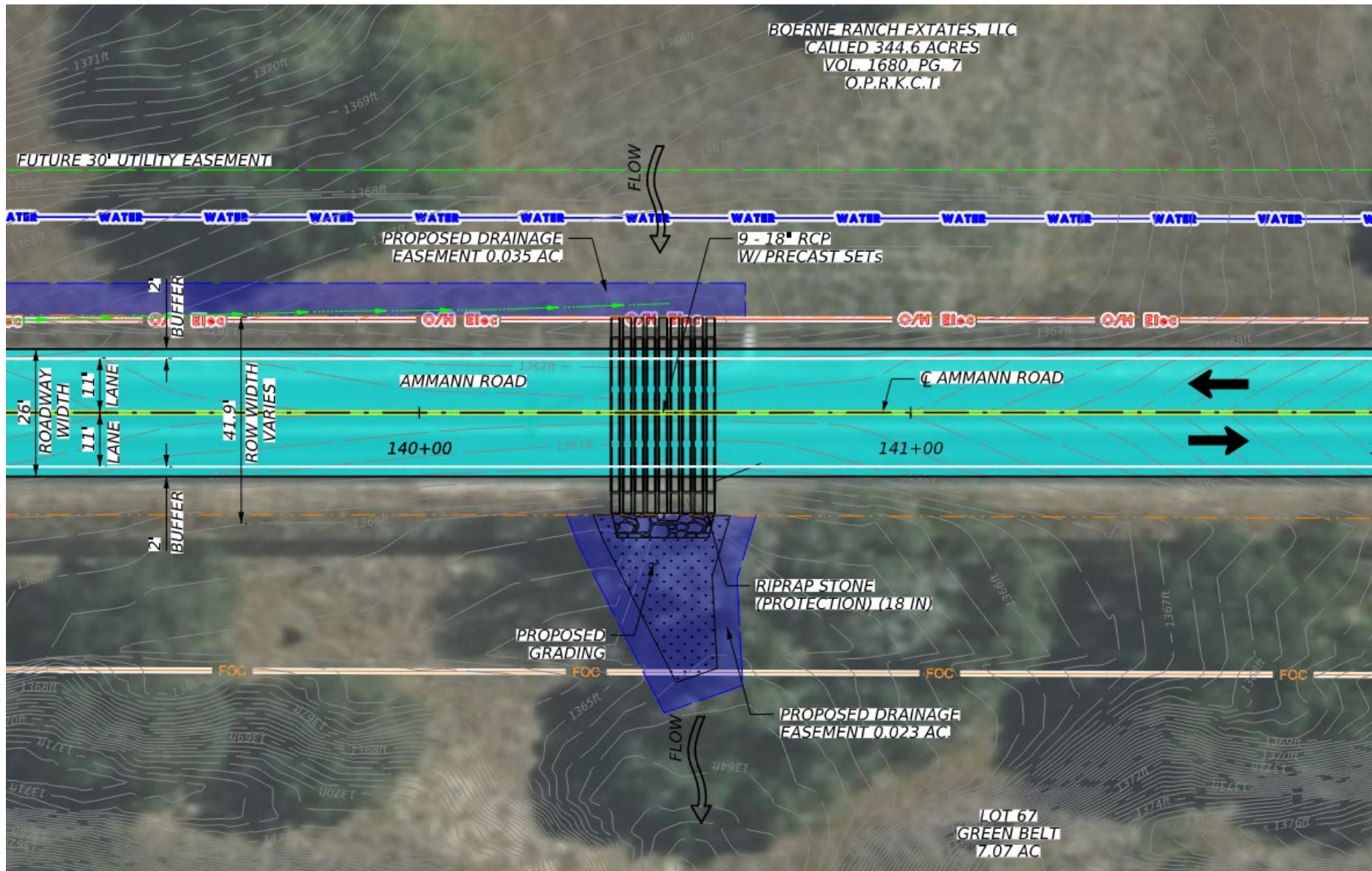
Low Water Crossing C2

Impact type	Option 1 (5-yr LOS)	Option 2 (10-yr LOS)	Option 3 (25-yr LOS)
Culvert Size	*6-18" RCPs	*7-18" RCPs	*9-18" RCPs
End Treatment	Precast Safety End Treatments		
Erosion control	Rock riprap at the downstream w/grading within proposed easement on either sides		
<u>Cost</u>	<u>\$57,972</u>	<u>\$66,797</u>	<u>\$85,092</u>

*Culvert sizing and cost are subject to change as design progresses









Potentially Affected Parcels

▶ Due to the grading for Low Water Crossings:

- Low Water Crossing C1
 - *Property ID: 11783. 346 Ammann Rd*
 - *Red Dog Ranch Ventures, LLC*
- Low Water Crossing C2
 - *Boerne Ranch Estates*
 - *Stone Creek Ranch – Unit 1, Block 1, Lot 67 (Green Belt)*

▶ Due to the proposed ditches/other required grading:

- *Property ID: 153687. 346D Ammann Rd* (Grading for drainage improvements)
- *Boerne Ranch Estates, LLC* (Grading for drainage improvements and realignment of the roadway to soften the curve)
- *Stone Creek Ranch – Unit 1, Block 1, Lot 6 (Green Belt)* (Grading for drainage improvements)
- *K7 Ranchers, LTD* (Grading for drainage improvements)
- *PG Pfeiffer Ranches, LLC* (Grading for drainage improvements)
- *GBRA* (Grading for drainage improvements)

*Affected parcels are subject to change as design progresses

LWC Recommendations



Location	Option 1 (5-yr LOS)	Option 2 (10-yr LOS)	Option 3 (25-yr LOS)
C1	*4-6'x2' MBCs	*6-6'x2' MBCs	*9-6'x2' MBCs
C2	*6-18" RCPs	*7-18" RCPs	*9-18" RCPs
C1 Cost	\$233,619	\$289,915	\$373,600
C2 Cost	\$57,972	\$66,797	\$85,092
<u>Total Low Water Crossings Cost</u>	<u>\$291,591</u>	<u>\$356,712</u>	<u>\$458,692</u>
Other Construction Cost	\$6,212,469	\$6,233,308	\$6,265,941
<u>Total Project Cost</u>	<u>\$6,504,060</u>	<u>\$6,590,020</u>	<u>\$6,724,633</u>

*Culvert sizing and cost are subject to change as design progresses



QUESTIONS?

