

Dear Council:

As we have mentioned at previous council meetings, we have been gathering data on traffic and speed on Noble Lark Drive with the hope that it will be considered with and compared to the data collected by the city.

While it is summarized in this note, I have attached the collected data in graph form for ease of information sharing. We apologize for not attending today's meeting in person. This meeting conflicts with our daughter's birthday, so we hope our absence is understandable.

Since the re-opening, we have utilized an electronic traffic counter acquired from Telraam Citizen Data. We are happy to share the technical details of this device if such information is desired.

We live between the intersection of Kalkallo and Noble Lark, before you arrive at Dietz-Elkhorn, and we have collected the following data for that section of road:

- Between October 1st and December 16th, our section of Noble Lark has seen a total of 26,150 vehicles (22,143 cars and 4,007 heavy vehicles, which includes trucks, pickup trucks, delivery vans, and large SUVs). For weekdays, we have averaged over 450 vehicles per day, not counting evening traffic. Weekend traffic averages are 130 vehicles per day.
- That same time period has seen 2,114 pedestrian walkers and 635 bicycles
- Over 70% of the vehicles traveled at speeds between 18-31 mph – that is probably a reflection of the lowered speed limit.

The majority of the traffic counts occur during school drop-off and pickup hours. For perspective, according to Boerne ISD enrollment data, prior to school re-zoning in 2023, the residents of the Woods had 37 children attending Van Raab Elementary. The traffic is clearly coming from elsewhere.

We are not qualified to speak as to whether these traffic counts are what is typically expected on a "Local Neighborhood Street" but we are sharing them for the council's consideration and to inform the process.

Again, we appreciate the City's efforts and the seriousness in which it is handling this matter. For the record, we continue to support full closure of the street, or in the alternative, a right-turn only provision.

If anyone wants to see the data for themselves, it can be viewed at: <https://telraam.net> – just find Boerne / Noble Lark Drive on the map and click on the street segment in yellow.

Sincerely,

Marc and Brandi Friberg

My segment

Monthly

10 modes

Trends

15 min

Installations

Pick a start date

01-10-2024



Max 3 month interval

16-12-2024



Update



Pedestrians

2114

5.21%



Two-wheelers

635

1.57%



Cars

22143

54.58%



Heavy vehicles

4007

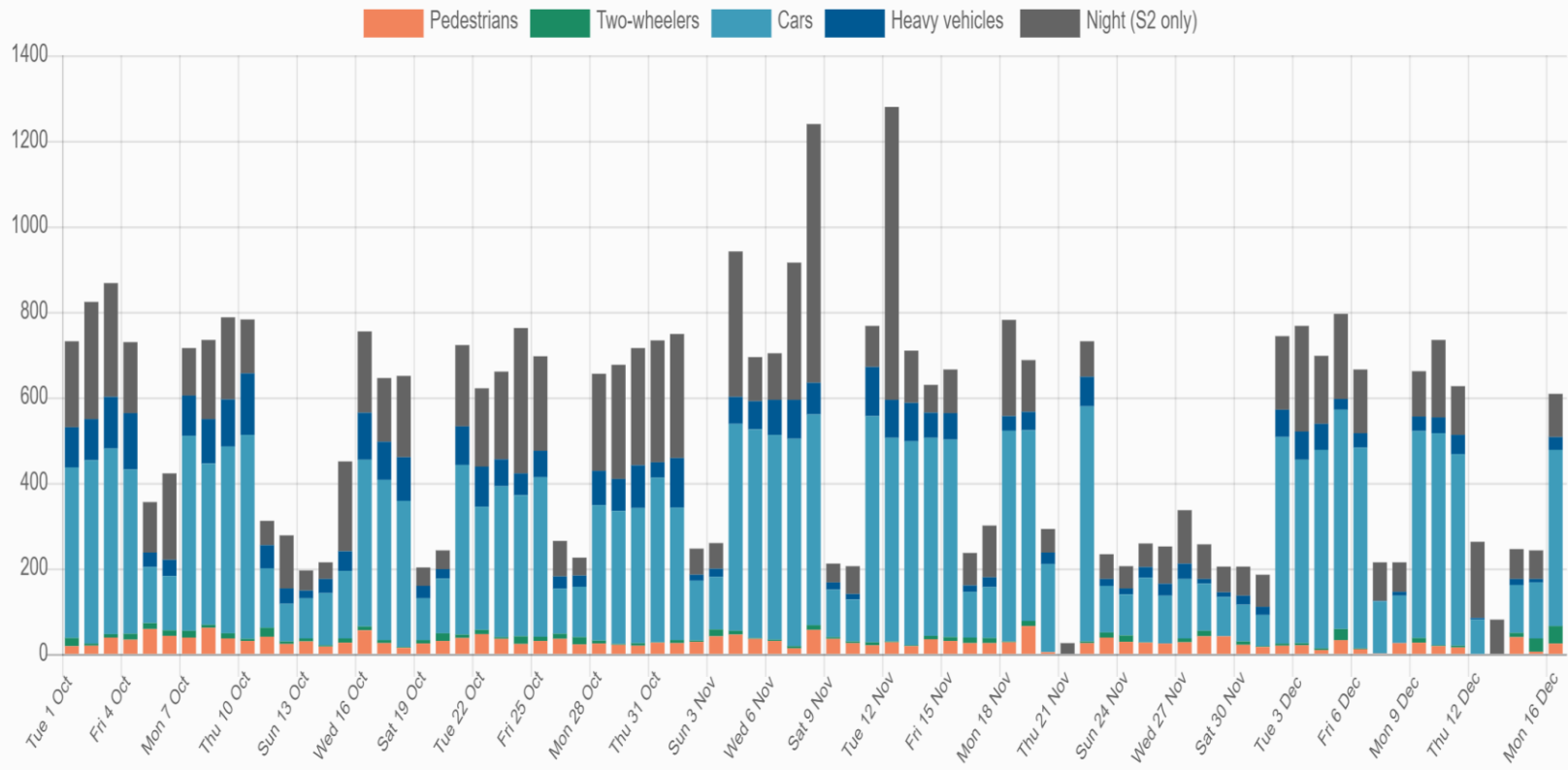
9.88%



Night

11670

28.77%



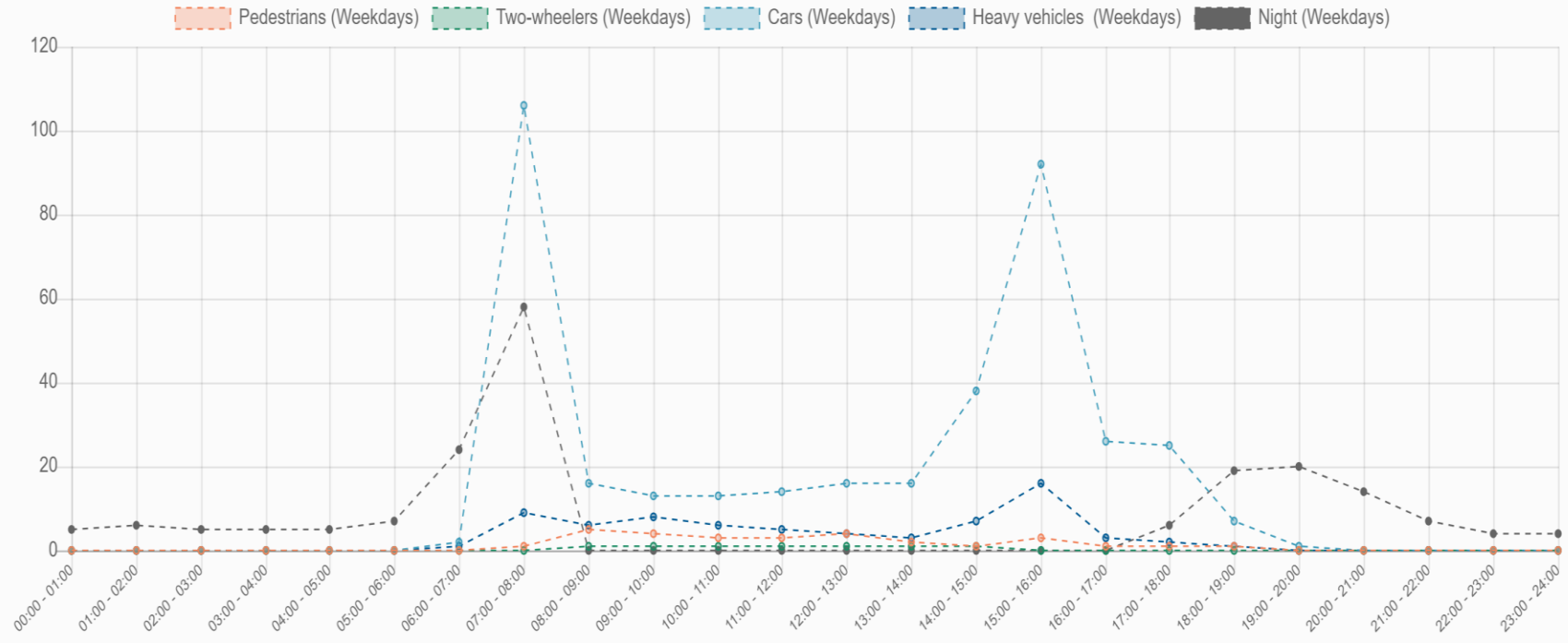
24 hour average

All days

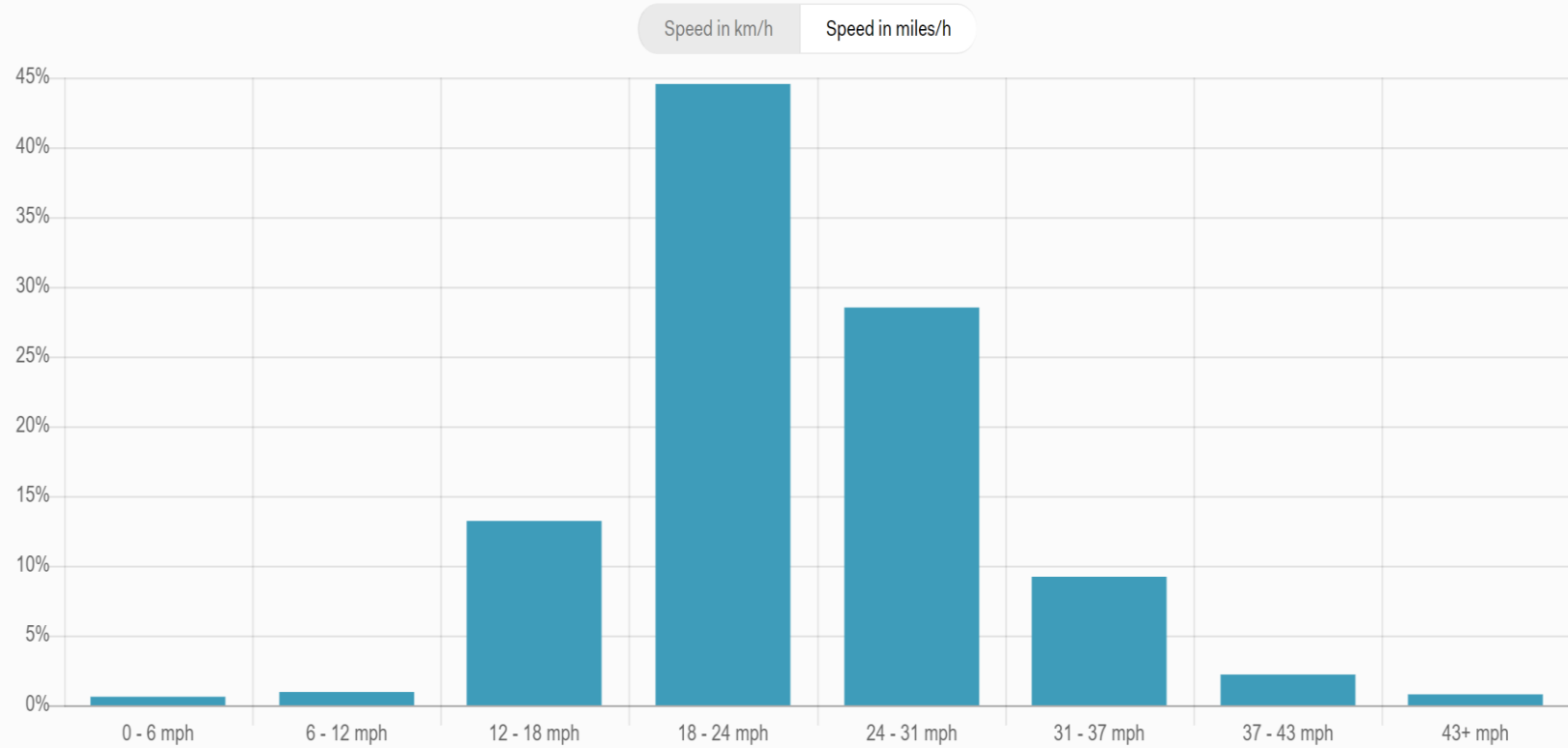
Weekdays only


Weekend only

Weekend vs. Weekdays



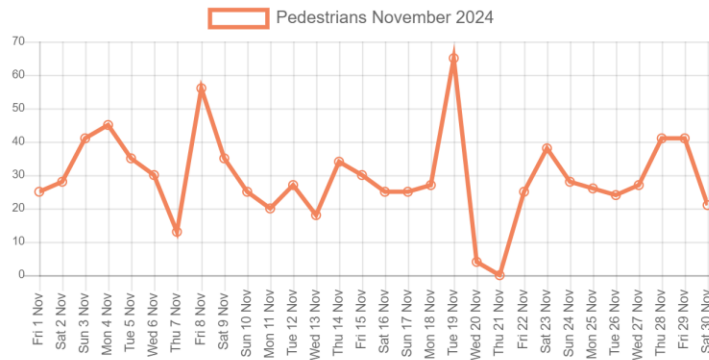
Speed cars



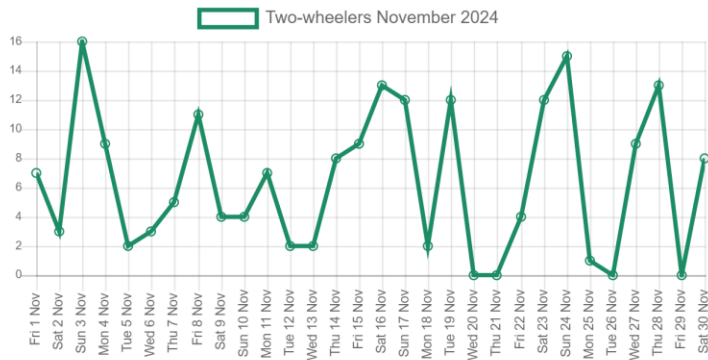
 Speeds are indicative. Measurements may differ by 10% from effective speeds.

The measured daily volumes per mode of transport for your street.

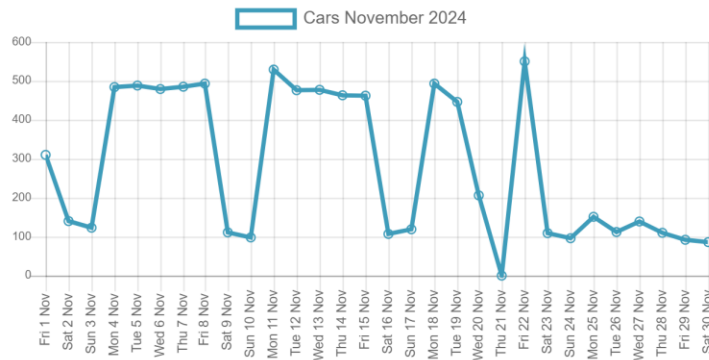
Pedestrians



Two-wheelers



Cars



Heavy vehicles

