



# **CITY OF FAIR OAKS RANCH**

# **AWIA**

# **ASSISTANCE**

# **RRA & ERP OVERVIEW**

**January 6, 2022**



# MEETING AGENDA

---

1. Project Overview
2. Project Schedule
3. RRA Overview
4. ERP Overview
5. Summary of Project Progress

# PROJECT OVERVIEW – AWIA ORIGINS

## Public Health Security & Bioterrorism Preparedness & Response Act

- Prompted by 2001 anthrax attacks
- Required utilities >3,300 people to perform security assessments re: bioterrorism

2002

2004

## Risk Analysis & Management for Critical Asset Protection

- Prompted by 9/11
- ASME
- Focused on malevolent attacks

## National Infrastructure Protection Plan

- Expanded scope of RAMCAP to include natural hazards

2006

2010

## AWWA J100

- Guidance document
- Standardized RAMCAP framework for Water/WW Sector

## America's Water Infrastructure Act

- Requires utilities >3,300 people to perform risk assessments & emergency response plans

2018

# PROJECT OVERVIEW – AWIA DEADLINES

## CERTIFICATION DEADLINES

Population Served	Risk Assessment	Emergency Response Plan
≥ 100,000	March 31, 2020	September 30, 2020
50,000 – 99,999	December 31, 2020	June 30, 2021
3,301 – 49,999	June 30, 2021	December 30, 2021

## NOTES

- Emergency response plan certifications are due six months from date of risk assessment certification.
- Risk assessment must be reviewed and recertified every 5 years



# PROJECT SCHEDULE

[illegible]

# RISK & RESILIENCY ASSESSMENT

## ASSET/THREAT CHARACTERIZATION

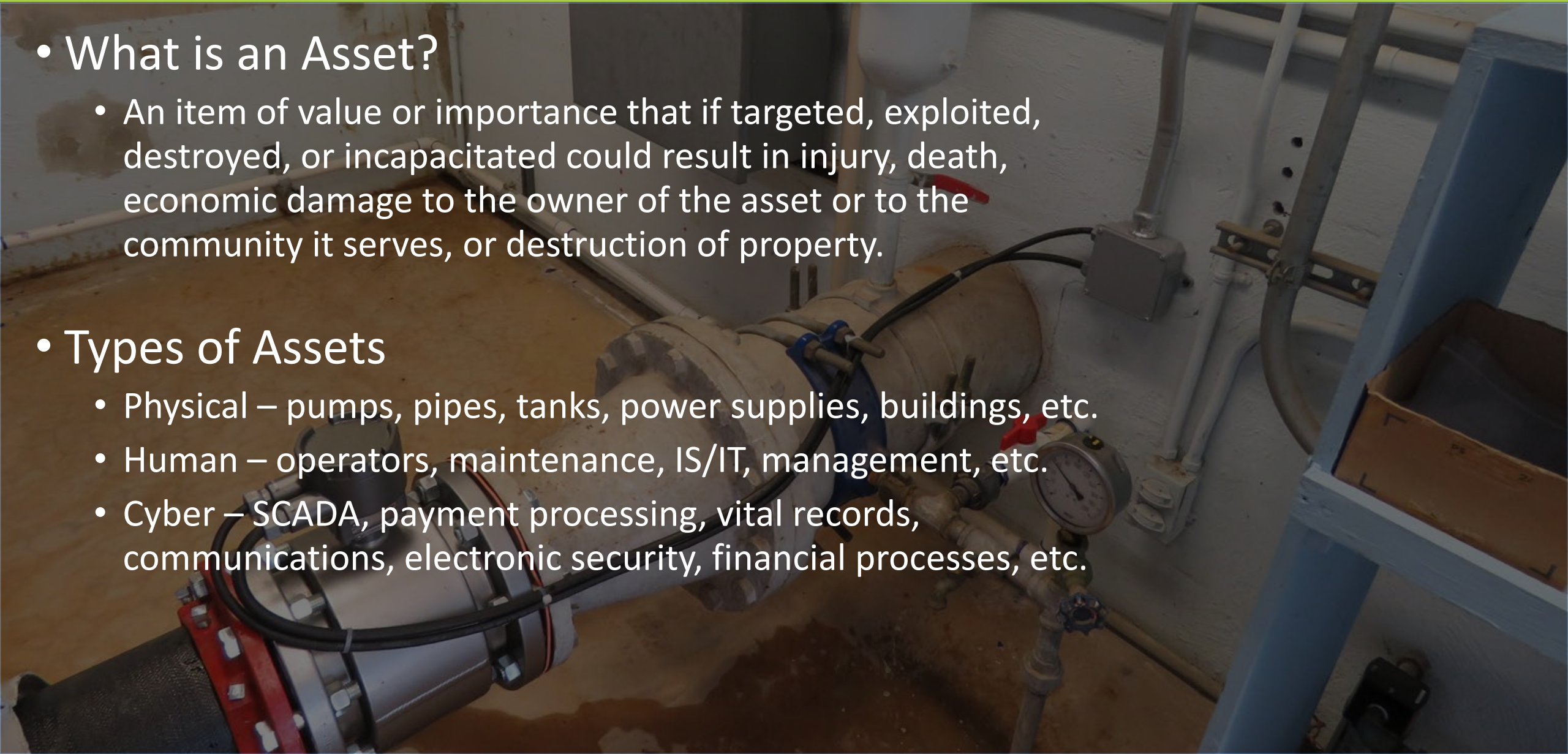


- Assets Critical to Operation and Function of Water System Should be Evaluated
- Potential Threats Fall Under Three Categories:
  - Natural Hazards
  - Malevolent Activities
  - Dependencies



# ASSET CHARACTERIZATION

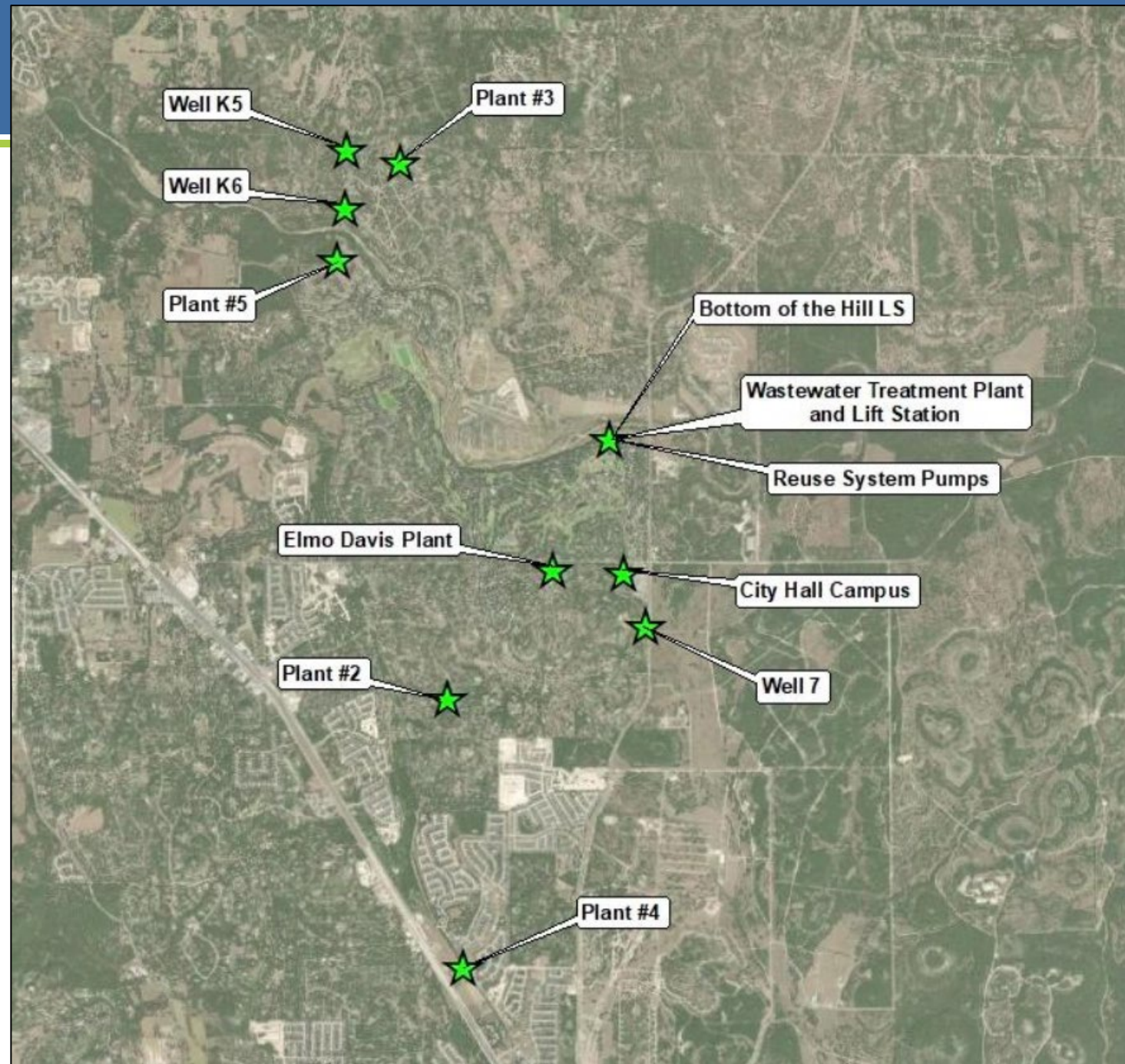
- What is an Asset?
  - An item of value or importance that if targeted, exploited, destroyed, or incapacitated could result in injury, death, economic damage to the owner of the asset or to the community it serves, or destruction of property.
- Types of Assets
  - Physical – pumps, pipes, tanks, power supplies, buildings, etc.
  - Human – operators, maintenance, IS/IT, management, etc.
  - Cyber – SCADA, payment processing, vital records, communications, electronic security, financial processes, etc.





# CRITICAL ASSETS

- **Plants** – Elmo Davis, #2, #3, #4, #5
- **Wells** – K5, K6, 7, and 17
- **City Hall Campus**
- **WWTP** – Overall WWTP, Bottom of the Hill LS, WWTP LS, and Reuse System Pumps





# THREAT CHARACTERIZATION

## Types of Threats

- Malevolent Acts

- Contamination
- Sabotage
- Diversion or Theft
- Attacks



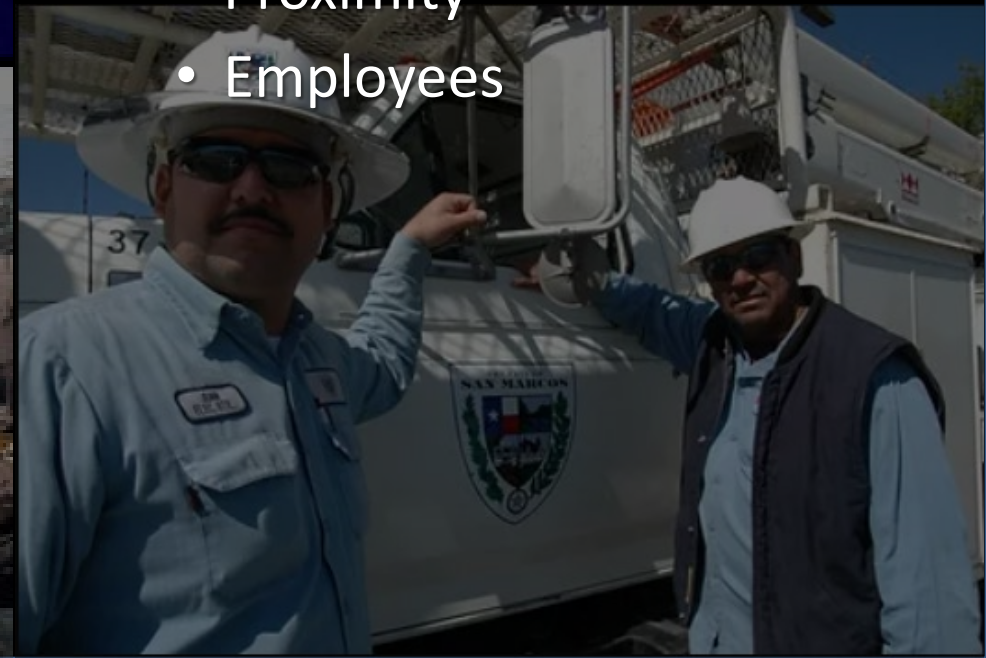
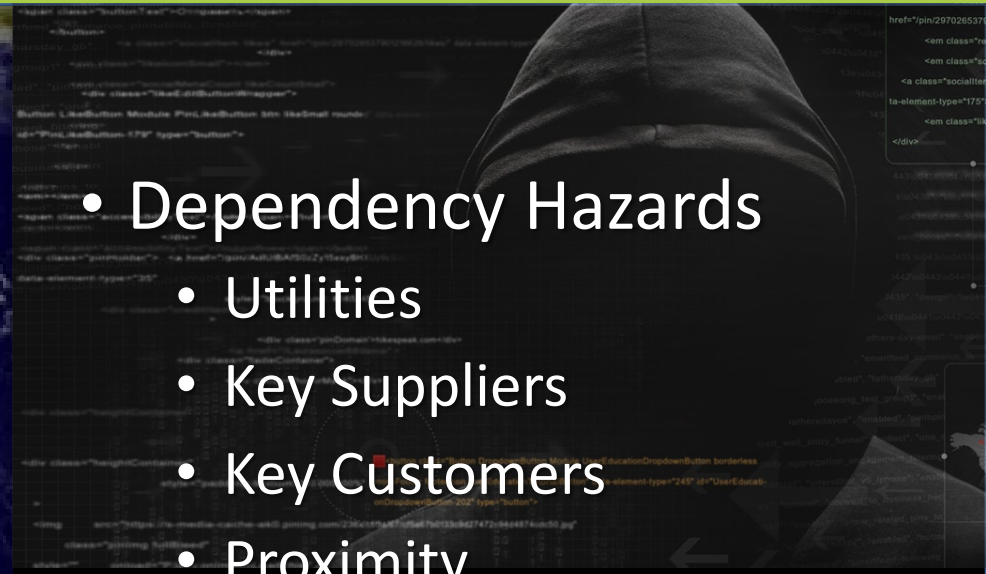
- Natural Hazards

- Hurricanes
- Earthquakes
- Tornadoes
- Floods
- Winter Storm
- Wildfire



- Dependency Hazards

- Utilities
- Key Suppliers
- Key Customers
- Proximity
- Employees



# SUMMARY OF BASELINE RISK

Top 18 asset-threat pairs of 247 evaluated.

			A	B	C	A x B x C
Threat Category	Threat	Critical Asset	Consequence*	Vulnerability*	Threat Likelihood*	Base Risk per Year
Theft	Cyber - Outsider	City Hall Campus	\$500,000	0.50	0.30	\$75,000
Sabotage	Cyber - Insider	City Hall Campus	\$500,000	0.50	0.30	\$75,000
Theft	Cyber - Insider	City Hall Campus	\$500,000	0.30	0.30	\$45,000
Sabotage	Cyber - Outsider	City Hall Campus	\$500,000	0.30	0.30	\$45,000
Sabotage	Cyber - Insider	WWTP	\$157,790	0.50	0.10	\$7,890
Sabotage	Physical - Insider	City Hall Campus	\$208,000	0.50	0.05	\$5,200
Sabotage	Cyber - Outsider	WWTP	\$157,790	0.30	0.10	\$4,734
Sabotage	Physical - Outsider	Plant #4	\$100,000	0.80	0.05	\$4,000
Sabotage	Physical - Insider	WWTP	\$157,790	0.50	0.05	\$3,945
Dependency	Loss of Suppliers	Plant #5	\$39,155	1.00	0.10	\$3,915
Sabotage	Physical - Outsider	Well K6	\$30,000	0.80	0.05	\$1,200
Sabotage	Physical - Outsider	Well K5	\$30,000	0.80	0.05	\$1,200
Sabotage	Physical - Outsider	Well 7	\$30,000	0.80	0.05	\$1,200
Dependency	Loss of Employees	WWTP	\$25,000	0.43	0.10	\$1,075
Attack	Car	City Hall Campus	\$208,000	0.50	0.0039	\$406
Natural	Flood	Bottom of the Hill LS	\$56,558	0.15	0.01	\$85
Natural	Flood	Plant #4	\$17,646	0.15	0.01	\$26
Attack	1 Assailant	City Hall Campus	\$23,420,000	0.30	0.000001	\$7

\*Consequence, vulnerability, and threat likelihood data based on information from the EPA's *Community Water System Emergency Response Plan Template*, AWWA's *M19 Manual Emergency Planning for Water and Wastewater Utilities*, and AWWA's *J100 Risk and Resilience Management of Water and Wastewater Systems*.



# MITIGATION: CYBERSECURITY THREATS

- FNI recommends fully implementing the recommendations identified in the Local Government Security Assessment Report prepared by CyberDefenses in 2020
- Mitigation measure: hire a cybersecurity consultant to implement recommendations
- Assumed 75% reduction in vulnerability

# MITIGATION: SABOTAGE, PHYSICAL INSIDER – CITY HALL CAMPUS

- Mitigation measure, specific to IT closets: security cameras (fire extinguishers were also recommended but have already been implemented)
- Assumed 50% reduction in vulnerability



# EMERGENCY RESPONSE PLAN OVERVIEW

- Purpose and Approach
- Utility Overview
- Emergency Operations
- Emergency Actions and Procedures
- Training, Exercises, and Plan Maintenance
- Certification

# ERP: PURPOSE AND APPROACH

- Applies to the functions, operations, and resources necessary to deliver potable water to the City's customers and preserve the mission of the City's Utilities Department
- EPA's *Community Water System Emergency Response Plan Template*
- AWWA M19 Manual *Emergency Planning for Water and Wastewater Utilities*



# ERP: UTILITY OVERVIEW

- Report includes detailed summary of water service provider's current assets
- Water production facilities, booster stations, ground and elevated storage tanks, interconnections, emergency response equipment, safety equipment, wastewater treatment plants\*, lift stations\*

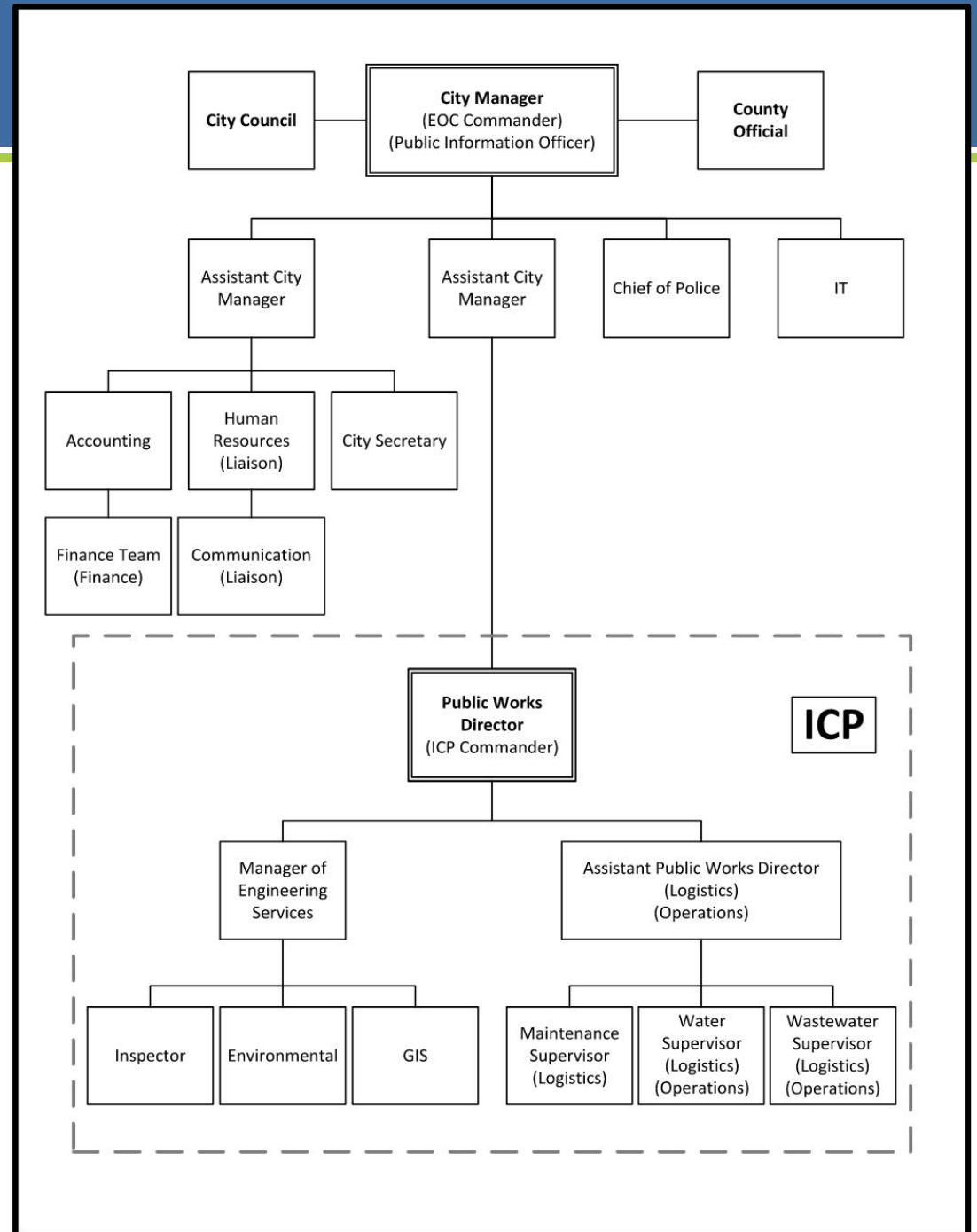
\* Not required to be evaluated

# ERP: EMERGENCY OPERATIONS (ICP/EOC)

Levels of Activation	ICP Status	EOC Status	Example Triggers
No ICP or EOC Activation	Not activated	Not activated	<ul style="list-style-type: none"><li>• Normal operations</li><li>• Alarms, warnings, or other alerts that an event may have occurred or may be imminent.</li></ul>
ICP Activated	Activated	Not activated	<ul style="list-style-type: none"><li>• Line break or pump station that does not affect critical customers or hinder emergency services.</li></ul>
Level 1: EOC Activated	Activated (support to EOC)	Limited Activation	<ul style="list-style-type: none"><li>• Severe thunderstorms with damaging hail or winds</li><li>• Localized flooding</li><li>• Hazardous materials spill or leak.</li></ul>
Level 2: EOC Activated	Activated (support to EOC)	Limited or Full Activation	<ul style="list-style-type: none"><li>• Line break or pump station that affects critical customers and/or hinders emergency services.</li><li>• Displacement of a large number of residents for an extended period of time.</li></ul>
Level 3: EOC Activated	Activated (support to EOC)	Full Activation - Other entity than PW/WU as Incident Commander	<ul style="list-style-type: none"><li>• Large-scale Tornado</li><li>• Major flooding</li><li>• Terror attack</li><li>• Encompasses a larger geographical area than the City of Fair Oaks Ranch</li><li>• Chlorine leak</li></ul>

# ERP: ORGANIZATION

- Level of response is contingent on the nature of the incident
- As the scale of incident grows, additional regional organization may be necessary




# ERP: EMERGENCY ACTIONS AND PROCEDURES

## Incident-Specific Response Procedures

Hazard Type	Incident/Emergency
General	General Failure (use with all incidents)
Natural	Extreme Cold and Winter Storms
Natural	Extreme Heat
Natural	Flooding <sup>1</sup>
Natural	Tornado <sup>1</sup>
Natural	Pandemic
Dependency & Proximity	Loss of Utilities <sup>1</sup>
Dependency & Proximity	Loss of Suppliers <sup>1</sup> (Water System Failure)
Cyber Sabotage & Theft	Cyberattack (Outsider) <sup>1</sup>
Contamination	Source Water Contamination
Attack: Assault Team	Active Shooter (1 Assailant)

<sup>1</sup>Credible threats to critical assets identified in the City's RRA.

	Checklist Name:	System Failure	Revision #:	
	Checklist Owner:		Revision Date:	
	Checklist #:		Page #	Page 1 of 2

**A. Purpose**

The following items outline response actions water utilities can take during an overall system failure.

**B. Preparedness**


The following items are actions water utilities can take to ensure preparedness and response efficiency:

- Assign a representative of the utility to the incident command post of the community's EOC
- Identify essential personnel and ensure they are trained to perform critical duties in an emergency (and possibly without communication), including the shut down and start up of the system.

**C. Procedure**

*Communication*

Activity	Responsible
<input type="checkbox"/> (EXTERNAL) Governmental/Regulatory: Notify your local EMA and state regulatory/primacy agency of system status	
<input type="checkbox"/> (EXTERNAL) Governmental/Regulatory: If needed, request or offer assistance (e.g. equipment or personnel) through mutual aid networks, such as WARN.	
<input type="checkbox"/> (EXTERNAL) Customer: If water shortages or outages occur, notify customers of water advisories; consider collaborating with local media (television, radio, newspaper, etc.) to distribute the message. If emergency water is being supplied, provide information on the distribution locations.	
<input type="checkbox"/> (EXTERNAL) Governmental/Regulatory: Notify regulatory/primacy agency if operations and/or water quality or quantity are affected.	
<input type="checkbox"/> (EXTERNAL) Governmental/Regulatory: Notify regulatory/primacy agency of any changes to the utility operations or required testing parameters.	
<input type="checkbox"/> (EXTERNAL) Governmental/Regulatory: Work with your regulatory agency to assist in identifying and approving alternate water supplies and operational or design changes.	
<input type="checkbox"/> (EXTERNAL) Governmental/Regulatory: Communicate with public health officials, local EMA and other partners to discuss issues related to specific emergencies and public health activities.	
<input type="checkbox"/> (EXTERNAL) Governmental/Regulatory: Communicate with public health officials, local EMA and other partners to evaluate conditions and water use requirements related to HVAC systems required by hospitals and identify alternative means to supply water if the utility is unable to meet demand.	
<input type="checkbox"/> (INTERNAL) Utility: Notify employees of any activated sites for pre-established emergency or temporary connections to nearby communities, as needed.	





# ERP: TRAINING, EXERCISES, AND PLAN MAINTENANCE

- Training logs may be maintained within ERP document
- Exercises within organization and/or with other City and county agencies in accordance with NIMS/ICS framework
- ERP must be updated every five years at a minimum
  - New facilities, staffing changes, or significant modifications to service area should be catalogued as they occur

# ERP: CERTIFICATION

- ERP was certified on December 22<sup>nd</sup>
- Certification achieved through online portal
- Plan administrator responsible for certification
- Confirmation from EPA via timestamped email response