

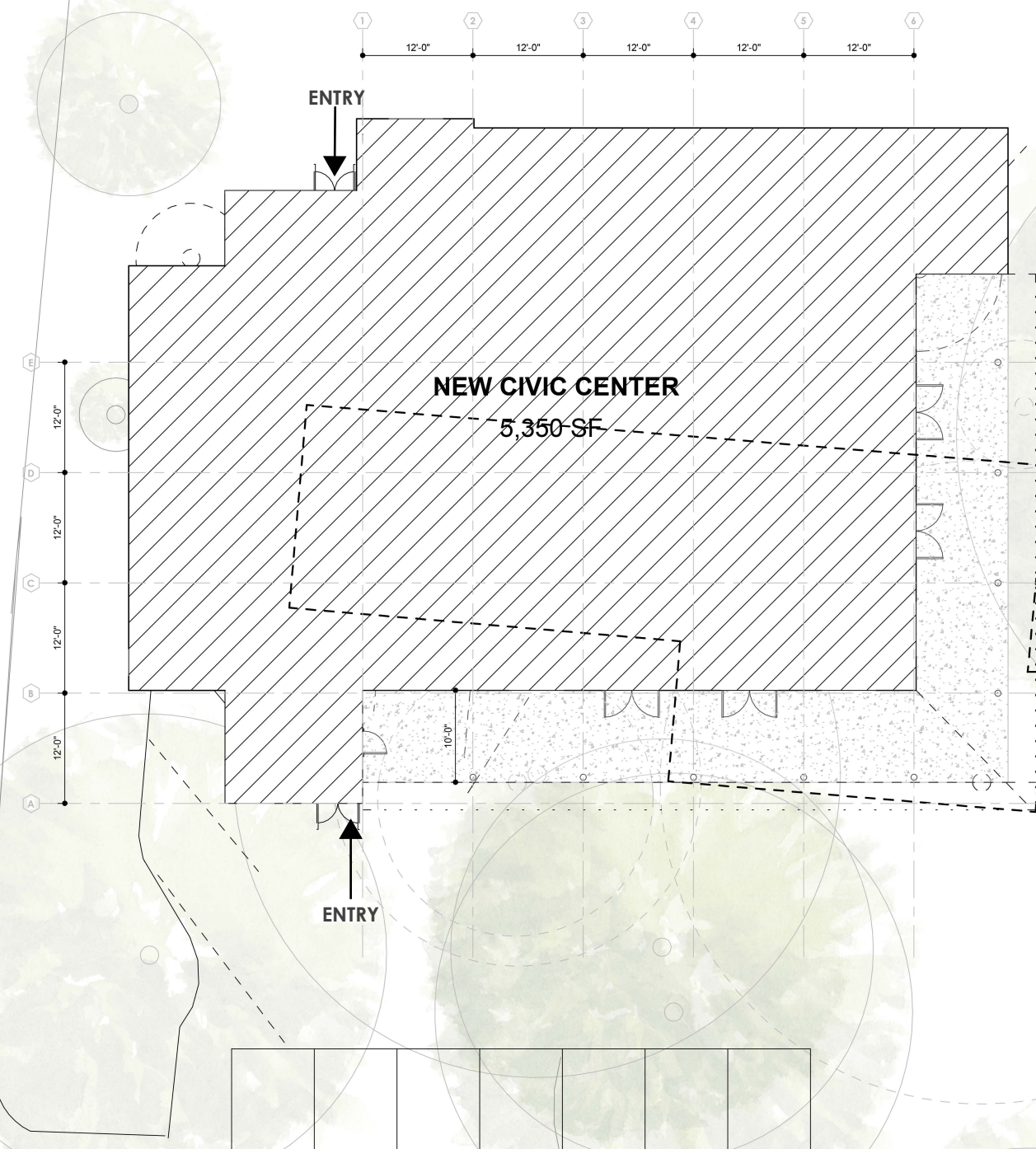
Fair Oaks Ranch

Civic Center



BOOTS GAUBATZ WAY

CHARTWELL LANE



NEW CIVIC CENTER
5,350 SF

EXISTING BUILDING

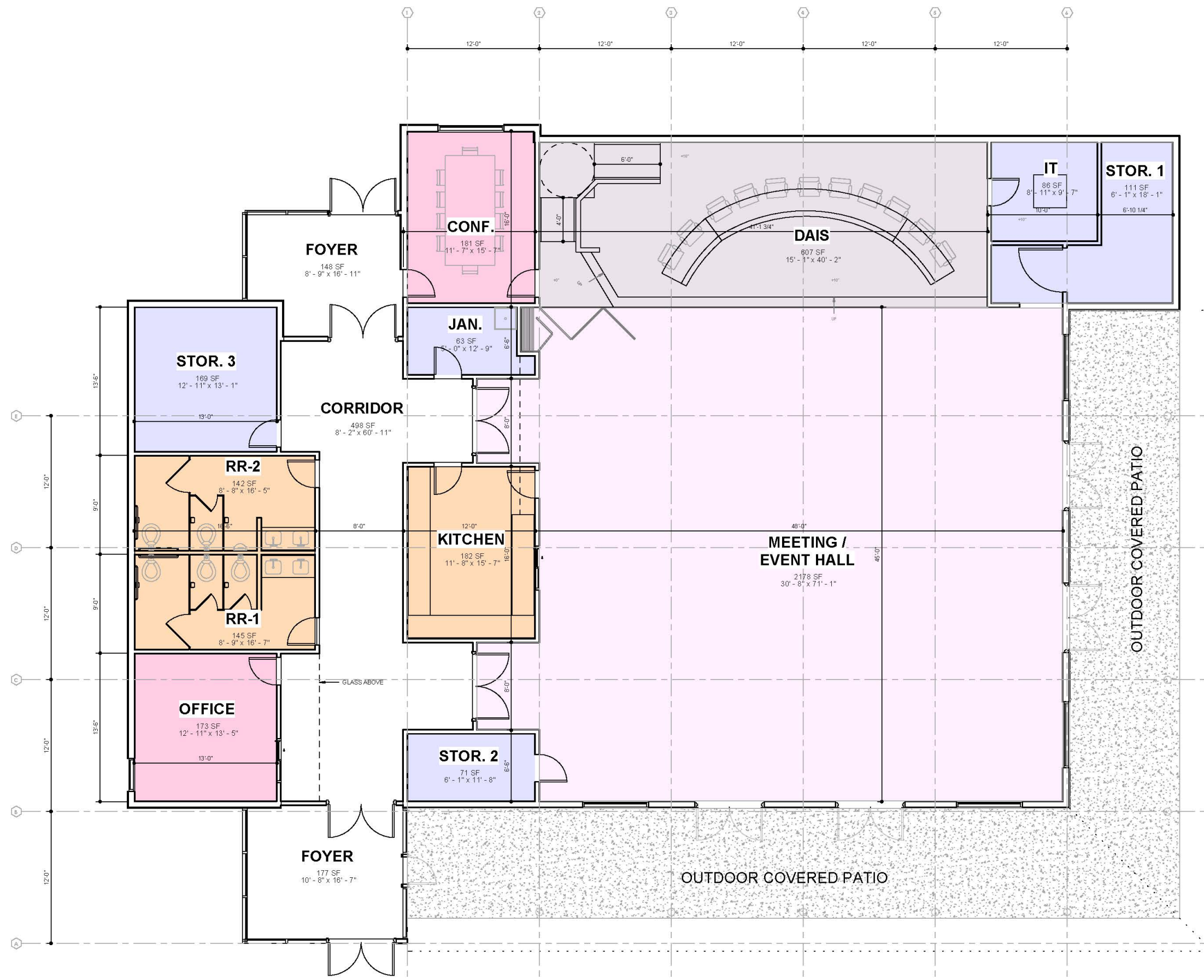
TOTAL BUILDING SF: 5,350 SF



Site Plan
Fair Oaks Ranch
Civic Center

06 November 2023
Tx. Lie. #16232





EVENT HALL:	48' X 45'	2,160 SF
DAIS:	40' X 15'	600 SF
OFFICE:	13' X 13' 6"	170 SF
CONFERENCE:	16' X 12'	180 SF
KITCHEN:	12' X 16'	192 SF
RESTROOM (2)	9' X 16' 6"	145 SF EACH
STORAGE 1:	6' X 18'	110 SF
STORAGE 2:	6' 6" X 12'	73 SF
STORAGE 3:	13' X 13' 6"	170 SF
IT:	9' X 10'	90 SF
JANITOR:	6' 6" X 12'	73 SF

TOTAL SF: 4,168 SF

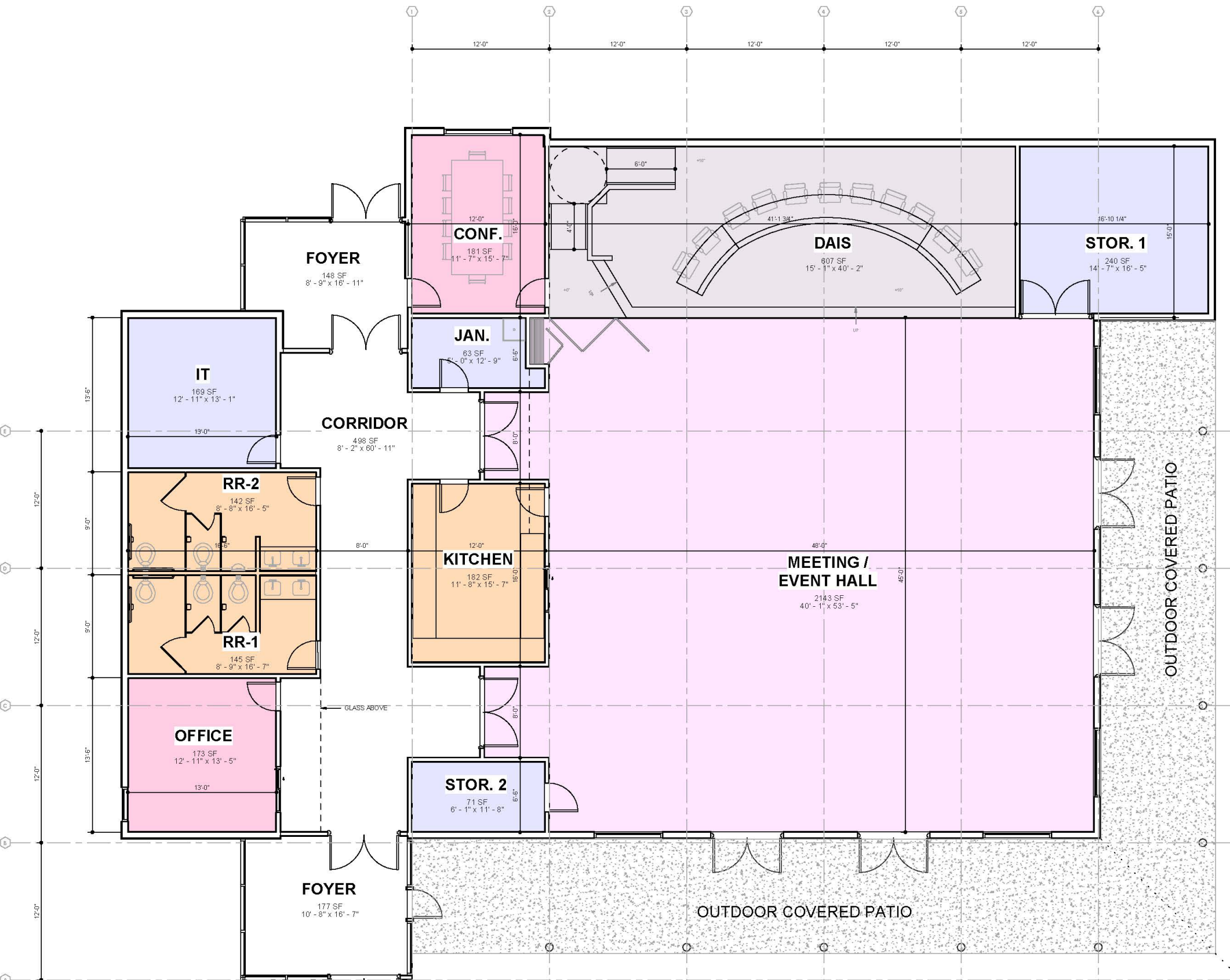
*ALL DIMENSIONS ARE TO FACE OF STUD

OPTION 1



Floor Plan
Fair Oaks Ranch
 Civic Center





EVENT HALL:	48' X 45'	2,160 SF
DAIS:	40' X 15'	600 SF
OFFICE:	13' X 13' 6"	170 SF
CONFERENCE:	16' X 12'	180 SF
KITCHEN:	12' X 16'	192 SF
RESTROOM (2)	9' X 16' 6"	145 SF EACH
STORAGE 1:	18' X 15'	270 SF
STORAGE 2:	6' 6" X 12'	73 SF
IT:	13' X 13' 6"	170 SF
JANITOR:	6' 6" X 12'	73 SF

TOTAL SF: 4,178 SF

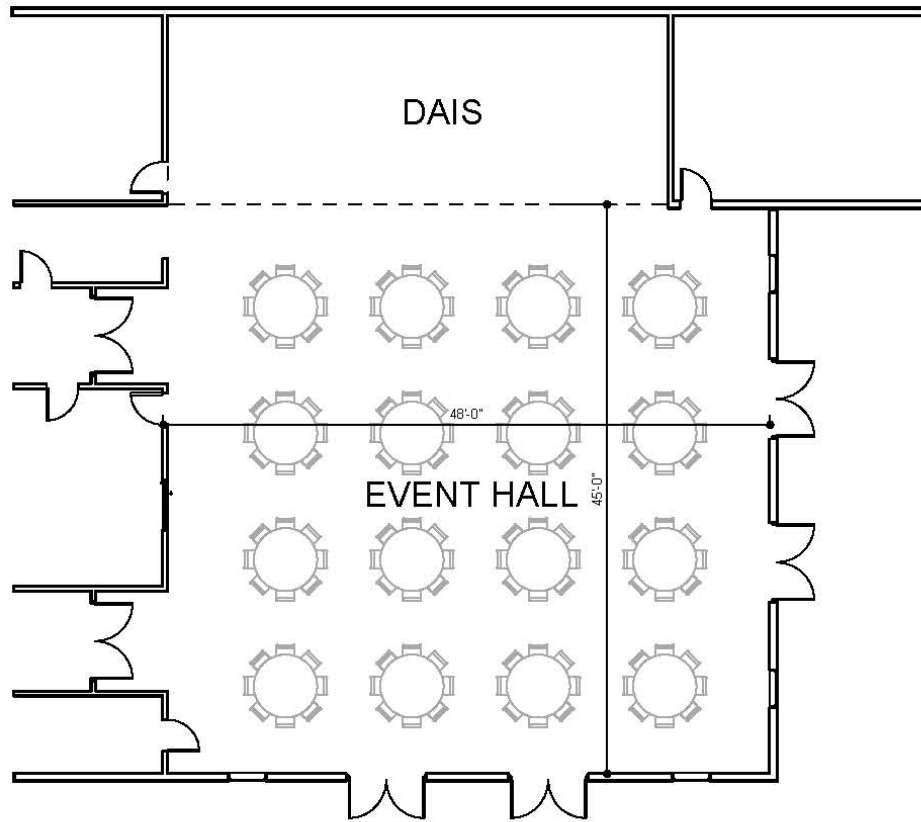
*ALL DIMENSIONS ARE TO FACE OF STUD

OPTION 2

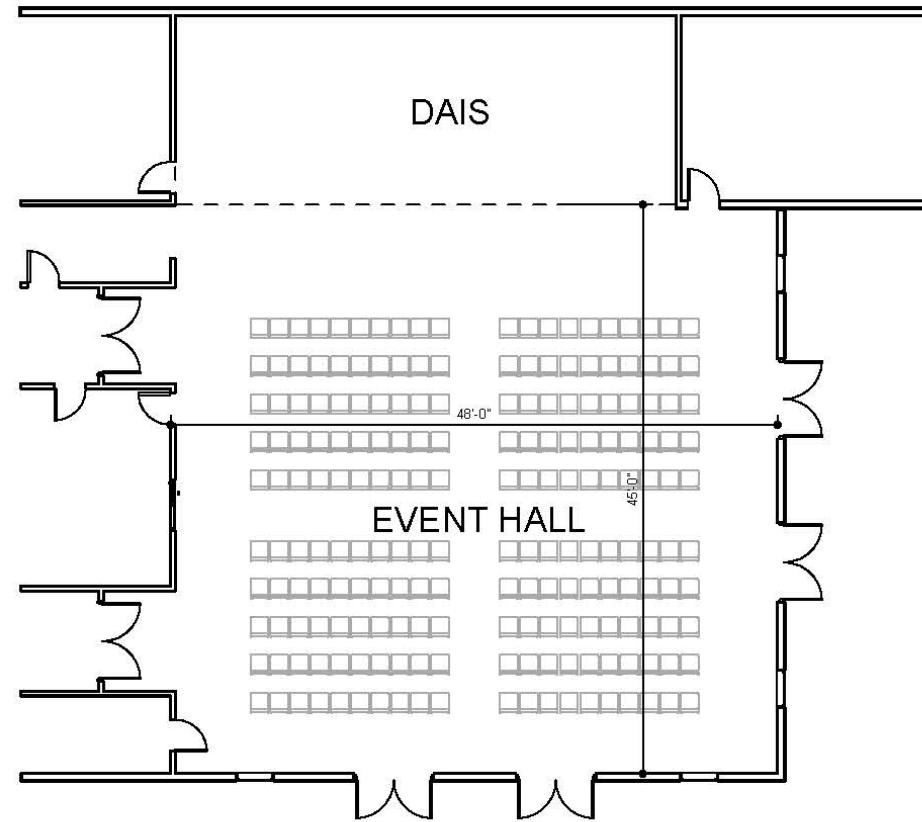


Floor Plan
Fair Oaks Ranch
 Civic Center

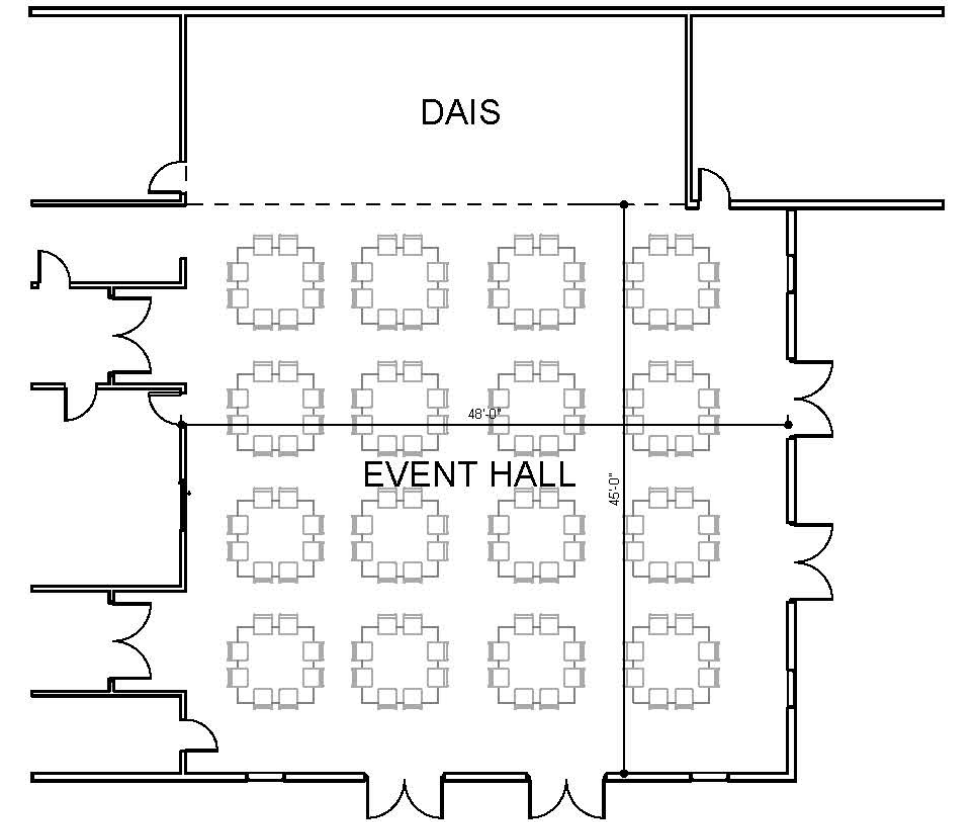




SEATING CAPACITY: 126 
5' ROUND TABLE SEATING WITH 17.5" X 24.5" CHAIRS



SEATING CAPACITY: 200 
CHURCH STYLE SEATING WITH 17.5" X 24.5" CHAIRS



SEATING CAPACITY: 126 
6' X 6' SQUARE TABLE SEATING WITH 17.5" X 24.5" CHAIRS

EVENT HALL : 48' X 45'

Furniture Layout Studies for
Fair Oaks Ranch
 Civic Center





NORTH ELEVATION

IT EVENT HALL
 &
 DAIS CONFERENCE ENTRY STOR.-1

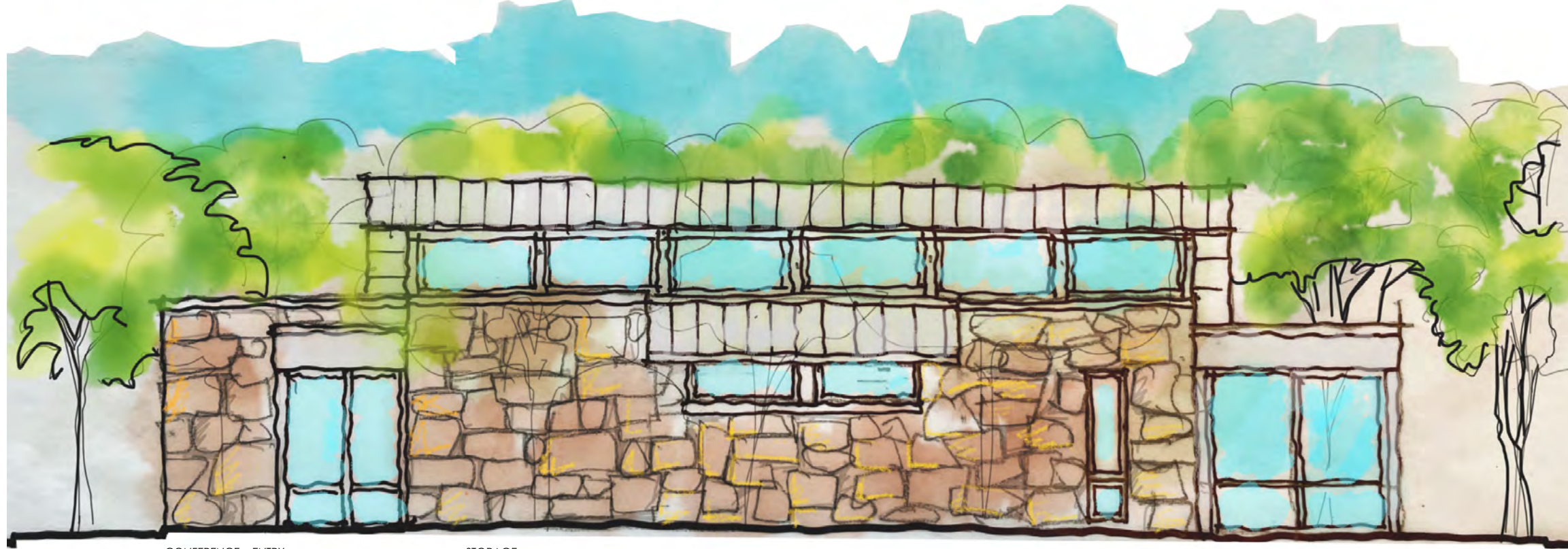


SOUTH ELEVATION

OFFICE ENTRY STORAGE
 &
 KITCHEN EVENT HALL
 &
 DAIS (BEYOND)

Exterior Elevations
Fair Oaks Ranch
 Civic Center





CONFERENCE ENTRY

STORAGE

RR-1

RR-2

OFFICE

ENTRY

EAST ELEVATION



ENTRY

EVENT HALL

DAIS & IT

WEST ELEVATION

Exterior Elevations
Fair Oaks Ranch
Civic Center

