

OWNER/DEVELOPER:

MERITAGE HOMES OF TEXAS, L.P.
CONTACT PERSON: TONDA ALEXANDER
2722 W. BITTERS RD, SUITE 200
SAN ANTONIO, TX 78231
TEL: (210) 402-6045
FAX: (210) 402-7397

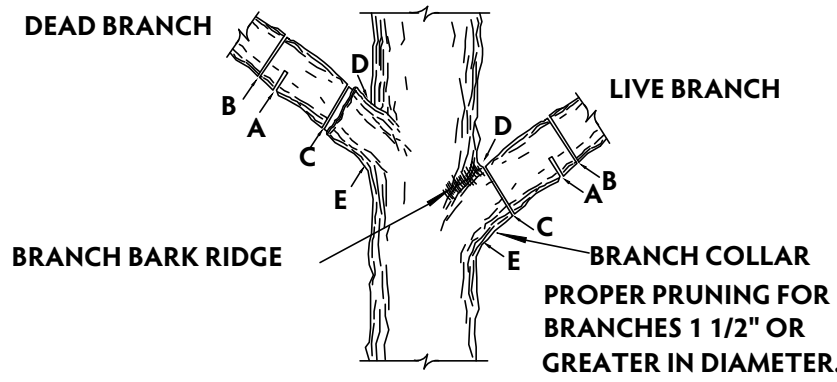
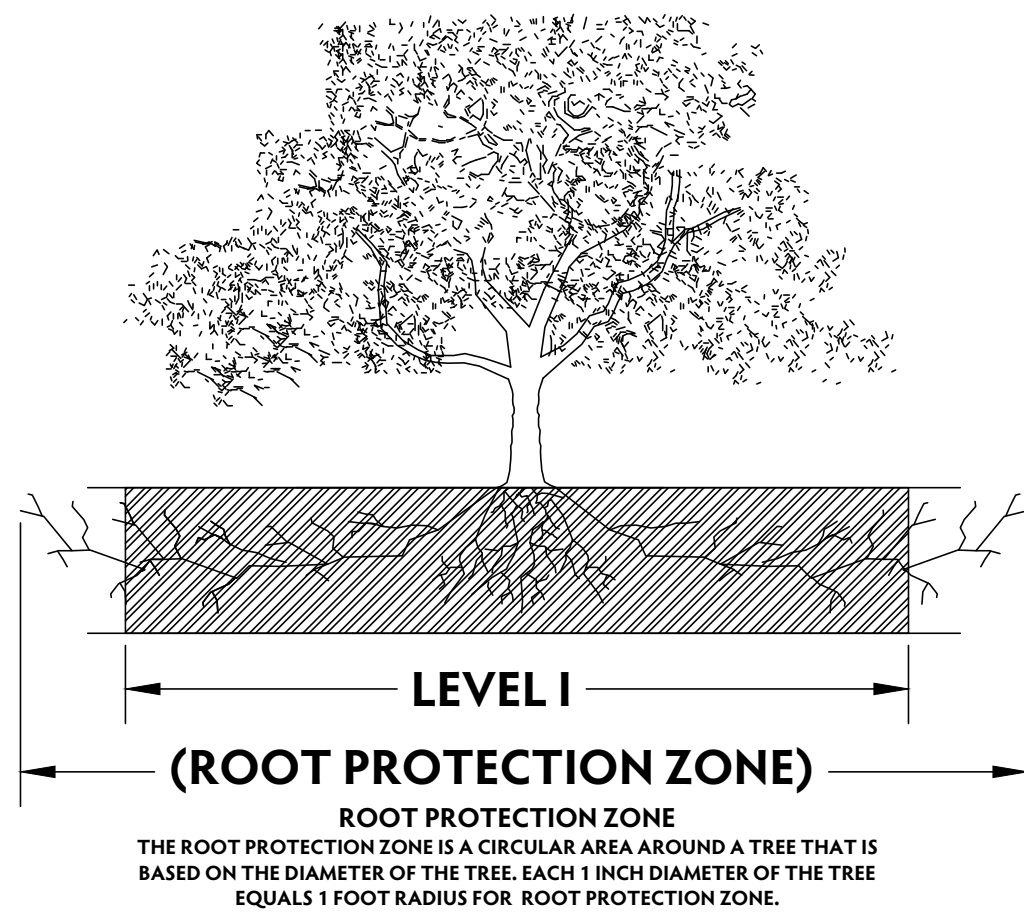
CIVIL ENGINEER:

M.W. CUDE ENGINEERS, L.L.C.
CONTACT PERSON: DAVID CUPIT, P.E.
4122 POND HILL ROAD, SUITE 101
SAN ANTONIO, TX 78231
TEL: (210) 681-2951
FAX: (210) 523-7112

NOTES:

1. FOX FALLS OFF-SITE GRAVITY SEWER IS SUBJECT TO THE CITY OF FAIR OAKS RANCH UNIFIED DEVELOPMENT CODE SECTION 8.8 - TREE AND HABITAT PROTECTION.
2. ALL TREES SHOWN ON THIS HERITAGE TREE PRESERVATION PLAN HAVE A TREE CIRCUMFERENCE OF 75 INCHES OR GREATER AS DESCRIBED IN THE CITY OF FAIR OAKS RANCH UNIFIED DEVELOPMENT CODE SECTION 8.8 (6).
3. ALL TREES SHOWN ON THIS TREE PRESERVATION PLAN ARE EXEMPT FROM THE TREE PRESERVATION REQUIREMENT PER THE CITY OF FAIR OAKS UNIFIED DEVELOPMENT CODE SECTION 8.8 (2) c.
4. ANY SUBSEQUENT NOTES DEALING WITH ROOT PROTECTION DO NOT APPLY TO RESIDENTIAL DEVELOPMENTS.
5. ALL EXISTING TREES DENOTED ON THIS PLAN TO BE PRESERVED AS SHOWN AND PROTECTED AT THE ROOT PROTECTION ZONE (RPZ). THE RPZ SHALL BE A MINIMUM OF 1 FOOT PER TREE FOR EACH 3.1" OF THE TREE.
6. A (CHAINLINK OR ORANGE MESH FENCE) BARRIER AROUND THE RPZ SHALL BE ERECTED AND MAINTAINED UNTIL CONSTRUCTION IS COMPLETED.
7. RPZ SHALL BE SUSTAINED IN A NATURAL STATE AND SHALL BE FREE FROM VEHICULAR OR MECHANICAL TRAFFIC; NO FILL, EQUIPMENT, LIQUIDS, OR CONSTRUCTION DEBRIS SHALL BE PLACED INSIDE THE PROTECTIVE BARRIER.
8. THE RPZ SHALL BE COVERED WITH 6" OF COARSE MULCH TO REDUCE MOISTURE STRESS.
9. ANY DAMAGE DONE TO EXISTING TREE CROWNS OR ROOT SYSTEMS SHALL BE REPAIRED IMMEDIATELY. ALL WOUNDS TO OAKS WILL BE PAINTED WITH PRUNING PAINT WITHIN 30 MINUTES AFTER DAMAGE. ROOTS EXPOSED DURING CONSTRUCTION OPERATIONS WILL BY CUT CLEANLY.
10. THE PROPOSED FINISH GRADE AND ELEVATION OF LAND WITHIN THE ROOT PROTECTION ZONE OF ANY TREE TO BE PRESERVED SHALL NOT BE RAISED OR LOWERED MORE THEN 3". WELLING AND RETAINING METHODS ARE ALLOWED OUTSIDE THE RPZ.
11. THE RPZ SHALL REMAIN PERVIOUS, I.E. GROUND COVER OR TURF AT COMPLETION OF LANDSCAPE DESIGN.
12. PROTECTION OF TREES DURING CONSTRUCTION SHALL FOLLOW SECTION 8.8 (8) OF THE CITY OF FAIR OAKS RANCH UNIFIED DEVELOPMENT CODE.
13. CONTRACTOR TO UPDATE TREE PRESERVATION PLAN FOR CHANGES DURING CONSTRUCTION AND NOTIFY ENGINEER ACCORDINGLY. THE REVISED TREE PRESERVATION PLAN WILL BE RESUBMITTED AND APPROVED BY THE CITY OF FAIR OAKS RANCH.
14. THERE ARE NO PROTECTED OR HERITAGE TREES LOCATED WITHIN THE 100 YEAR FLOODPLAIN.
15. PLANTED TREES SHALL BE NO SMALLER THAN 2.5" IN DIAMETER OR 8" IN TRUNK CIRCUMFERENCE.
16. PER SECTION 8.8 (5) e OF THE CITY OF FAIR OAKS RANCH, A TREE WARRANTY WILL BE PROVIDED TO THE CITY OF FAIR OAKS RANCH REGARDING ALL TREES MARKED TO BE SAVED.
17. A PRE-CONSTRUCTION WALK MUST BE COMPLETED WITH THE CITY OF FAIR OAKS RANCH STAFF PRIOR TO ANY TREE REMOVAL ON-SITE.

TREE CATEGORY	TREE #	SPECIES	DIAMETER (IN.)	TRUNK CIRCUMFERENCE (IN.)	TREE STATUS	REMOVED OR PRESERVED
HERITAGE TREE	6067	OAK	42	132	EXEMPT	REMOVED
HERITAGE TREE	6093	OAK	38	119	EXEMPT	REMOVED
HERITAGE TREE	32337	OAK	26	82	EXEMPT	REMOVED
HERITAGE TREE	32344	OAK	25	79	EXEMPT	REMOVED
PRESERVATION MITIGATION REQUIRED			131	412		
TREE MITIGATION THROUGH PLANTING = 44 ~ 3" TREES			132	415		



NOTE: DO NOT CUT FROM D to E.

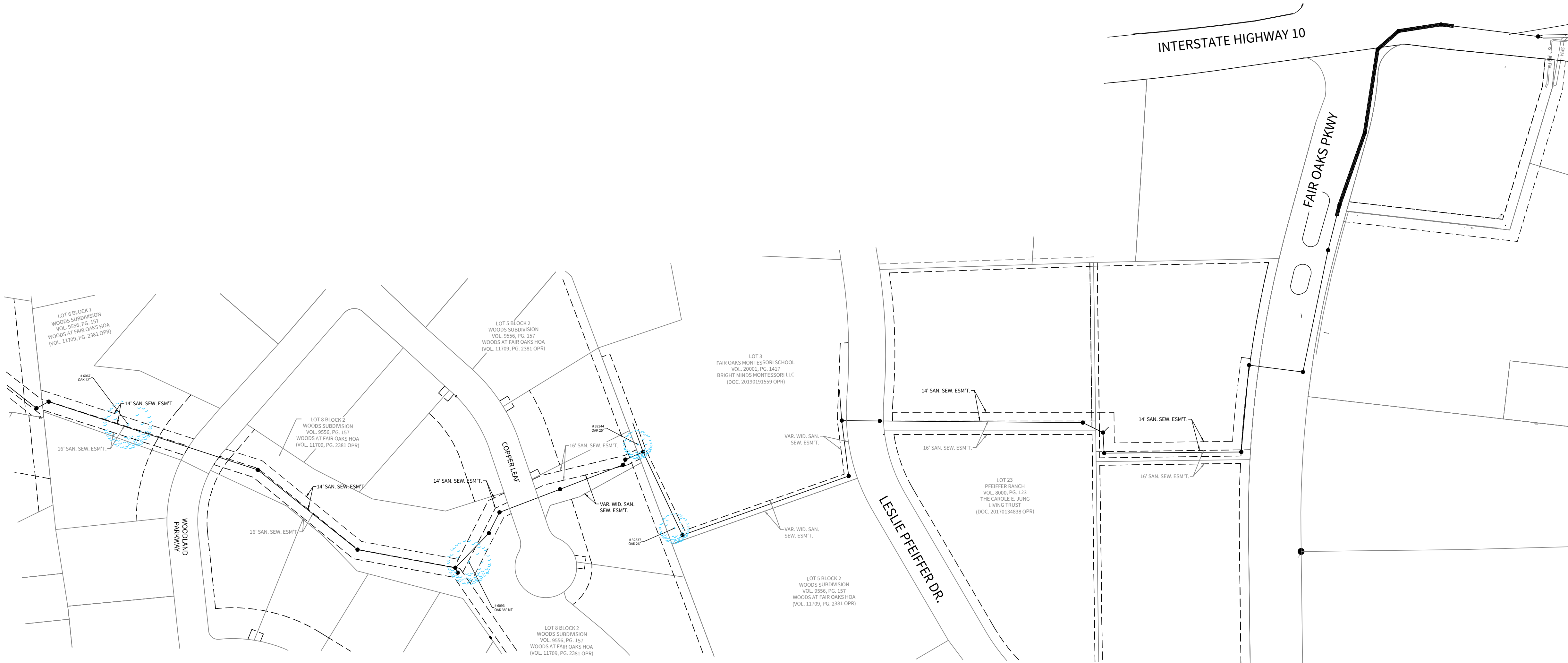
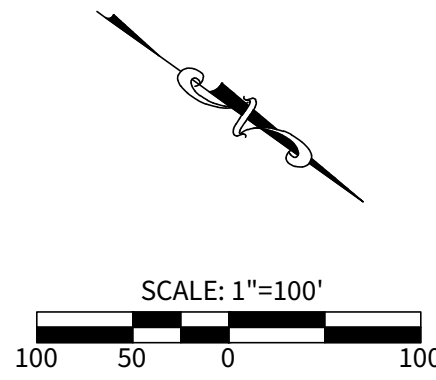
- A. FIRST CUT - TO PREVENT THE BARK FROM BEING PEELED WHEN THE BRANCH FALLS.
- B. SECOND CUT - TO REDUCE THE WEIGHT OF BRANCH.
- C. FINAL CUT - ALLOW FOR HEALING COLLAR BUT NO STUBS
- D. BRANCH RIDGES - INDENT PROPERLY BRANCH RIDGES WHICH ARE SITE FOR DECAY.

FOR OAKS ONLY: PAINT ALL WOUNDS OR CUTS WITH PRUNING PAINT WITHIN 20 MIN TO PREVENT THE SPREAD OF OAK WILT.

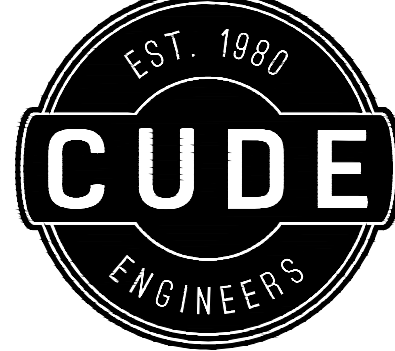
LEGEND



HERITAGE TREE REMOVED



CUD NG N RS.COM



4122 Pond Hill Road, Suite 101
San Antonio, Texas 78231
P:(210) 681.2951 F: (210) 523.7112

FOX FALLS OFFSITE GRAVITY SEWER

HERITAGE TREE PRESERVATION PLAN

DATE

05/05/2023

PROJECT NO.

03274.012

DRAWN BY

ED/AG

CHECKED BY

HS/DDC

REVISIONS

- 1.
- 2.
- 3.
- 4.
- 5.
- 6.
- 7.
- 8.
- 9.

CUDE ENGINEERS

TBPE No. 455
TBPLS No. 10048500

T1.00