



# WWTP Phase I Expansion

## Project Update



Grant Watanabe, P.E., CFM

Director of Public Works and Engineering Services

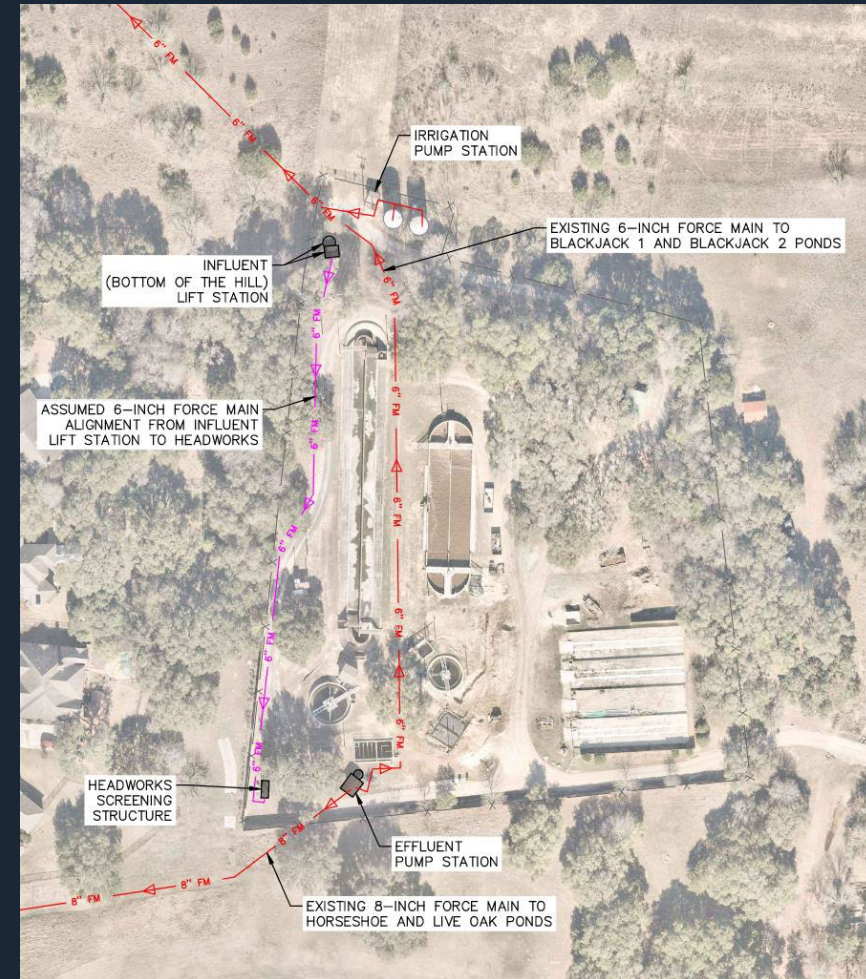
# Project Scope



## Phase 1 Expansion (Immediate Needs)

- Effluent Pump Station upgrades
- Offsite conveyance system upgrades
- Influent (Bottom of the Hill) Lift Station upgrades
- Headworks odor control improvements
- Water Balance Study

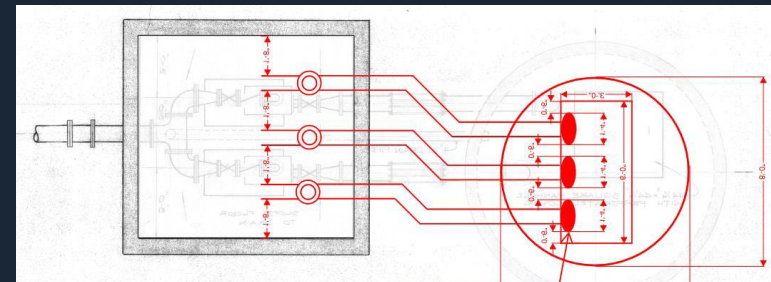
Estimated Cost: \$4.1 million



# Effluent Pump Station Upgrades



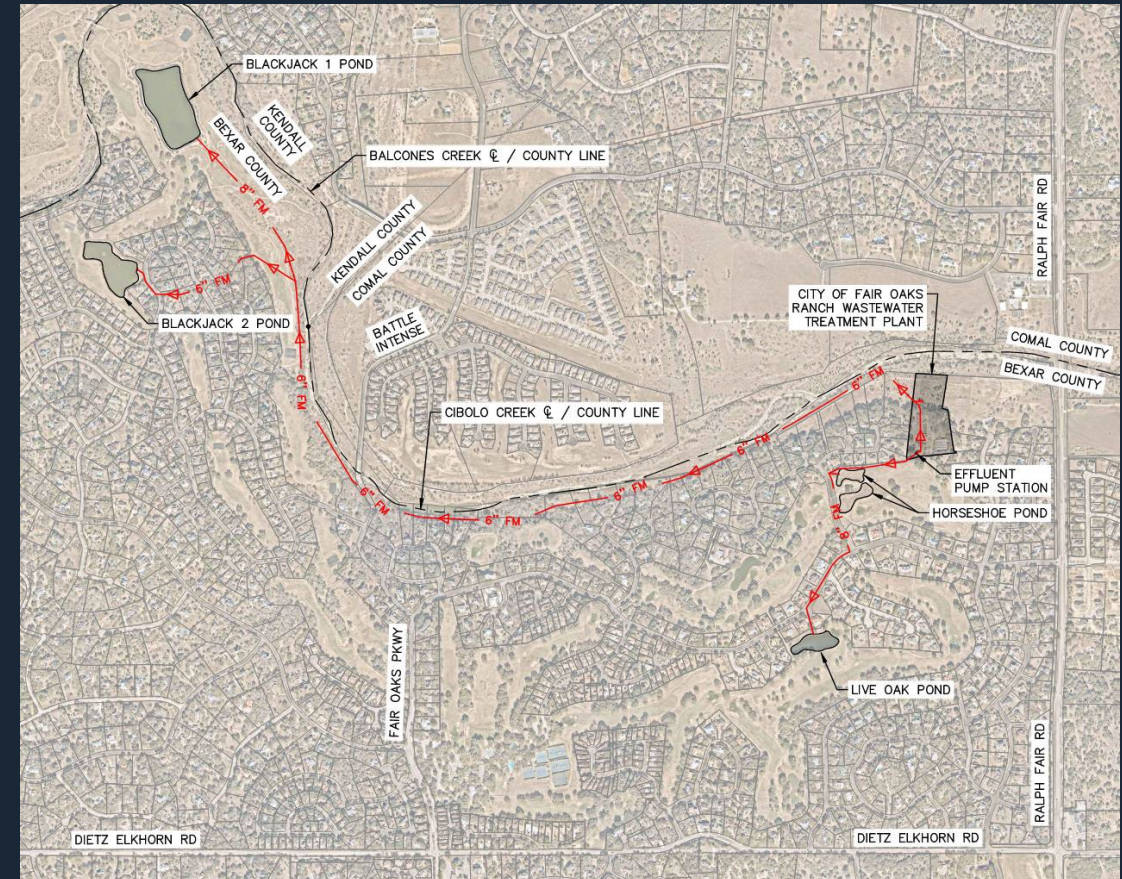
- Replace existing 15 HP pumps with three 30 HP VFD submersible pumps
- Modify pump vault and wet well to accommodate new discharge piping
- Replace existing canopy
- Install new electrical and SCADA panels and components



# Offsite Conveyance System Upgrades



- Install 10,400 linear feet of 12-inch PVC pipe from Effluent Pump Station to Blackjack 1
- Existing eight-inch pipe from Effluent Pump Station to Live Oak is adequate
- Street crossing near Battle Intense low water crossing
- Utility and temporary construction easements may be needed



# Bottom of the Hill Lift Station Upgrades



- Replace existing 10 HP pumps with two 15 HP VFD submersible solids-handling pumps
- Replace discharge piping and reline wet well
- Replace existing canopy
- Install new pump control panel with VFDs



# Headworks Odor Control Improvements



- Install carbon adsorption system with vapor phase treatment
- Install corrosion resistant panels over headworks channel
- Rehab concrete surfaces, motor coating, electrical conduit
- Carbon adsorption media to be replaced every 3-5 years



# Next Steps



- 30% Design Phase completed
- Approve Work Authorization to advance project to Final Design, including bid and construction phase services
- Complete Final Design in September 2025
- Bid advertisement in Fall 2025
- Start construction in early 2026