

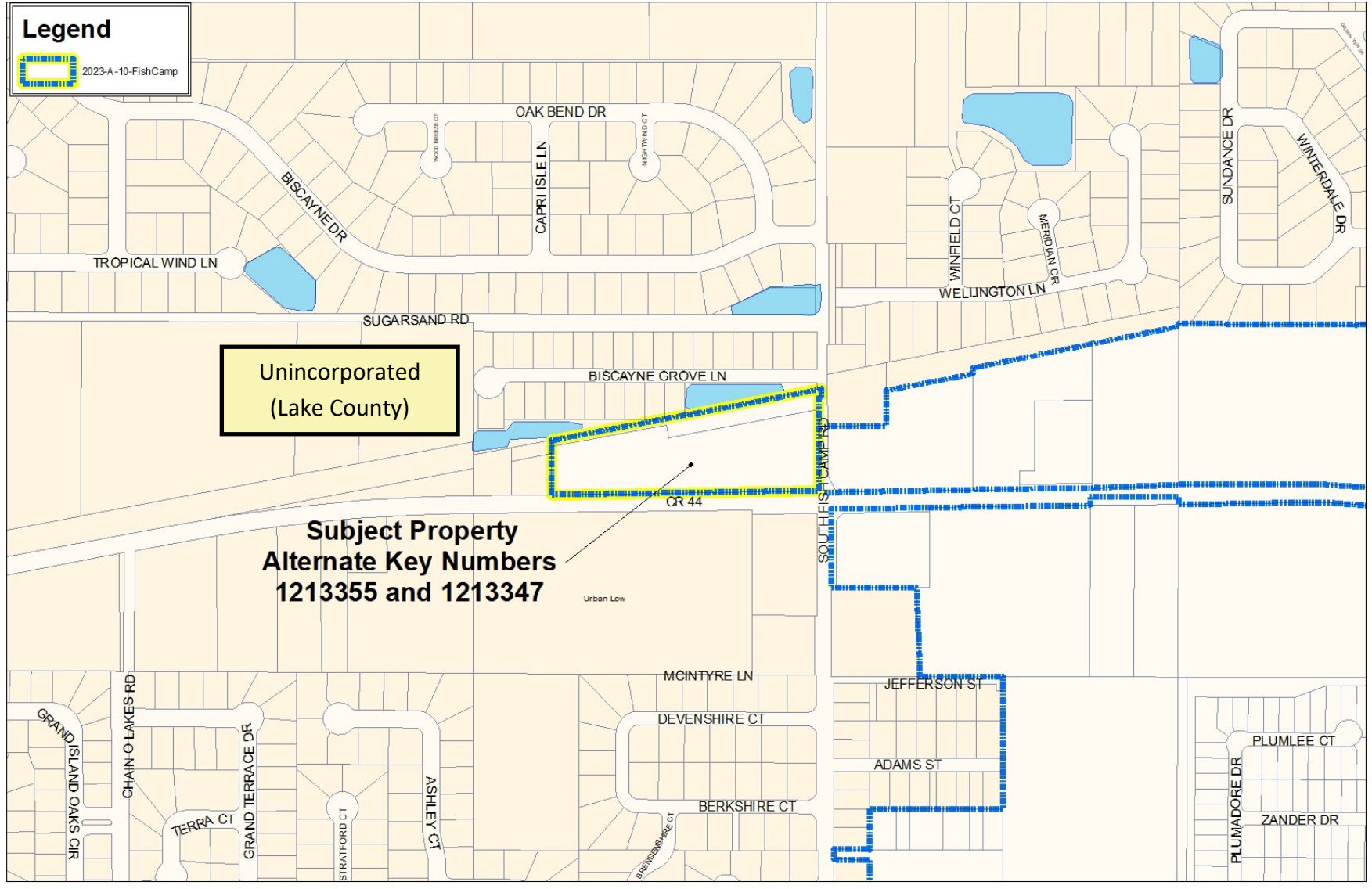
Subject Properties



Suzan EP Vandeveld, Trustee, Et Al  
Aerial Location



**Legend**



Unincorporated  
(Lake County)

**Subject Property  
Alternate Key Numbers  
1213355 and 1213347**

Urban Low


CR 44



Suzan EP Vandavelde, Trustee, Et Al  
Location



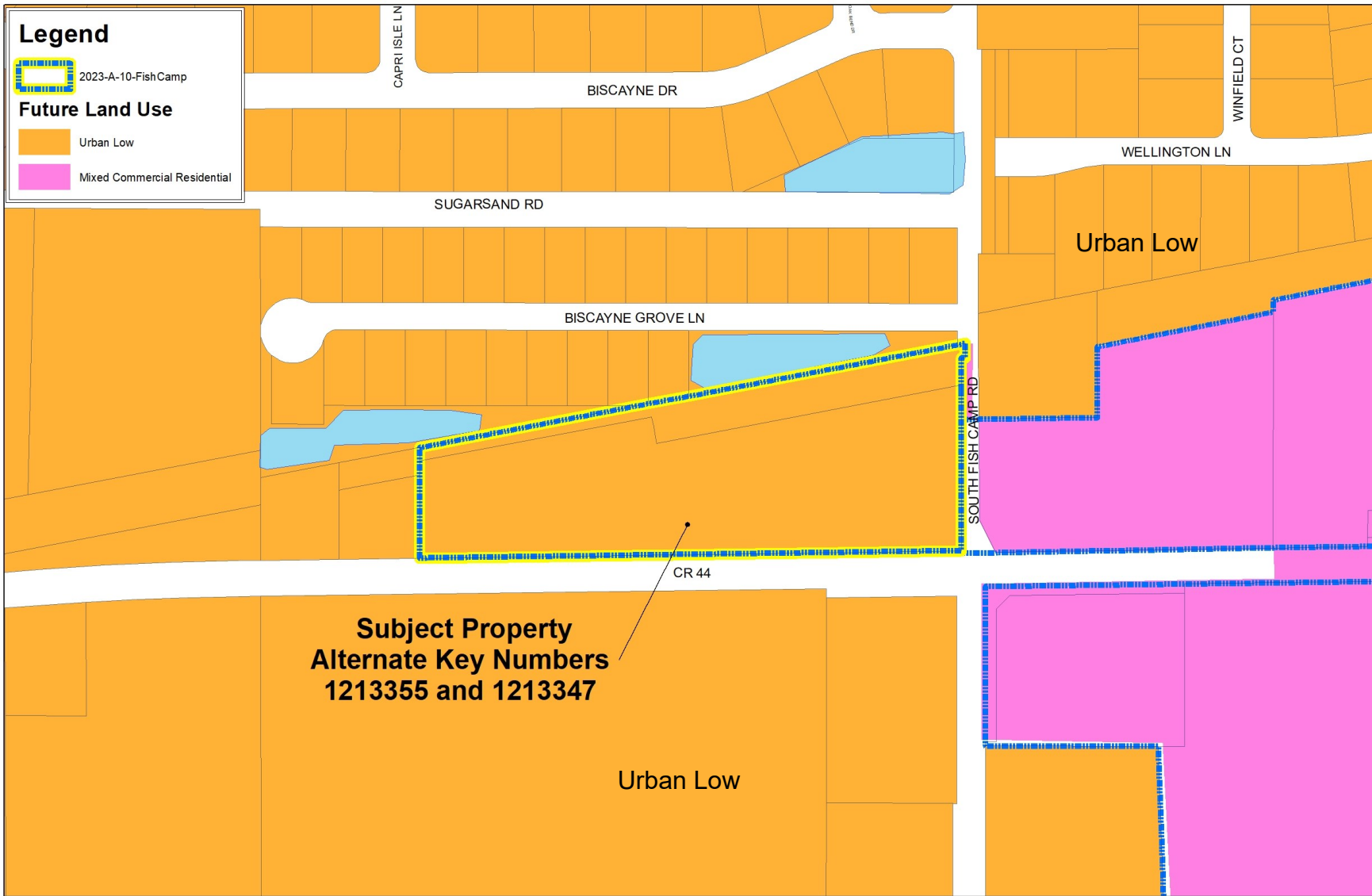
**Legend**

 2023-A-10-Fish Camp

**Future Land Use**

 Urban Low

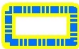
 Mixed Commercial Residential



Suzan EP Vandavelde, Trustee, Et Al  
Future Land Use (Current)

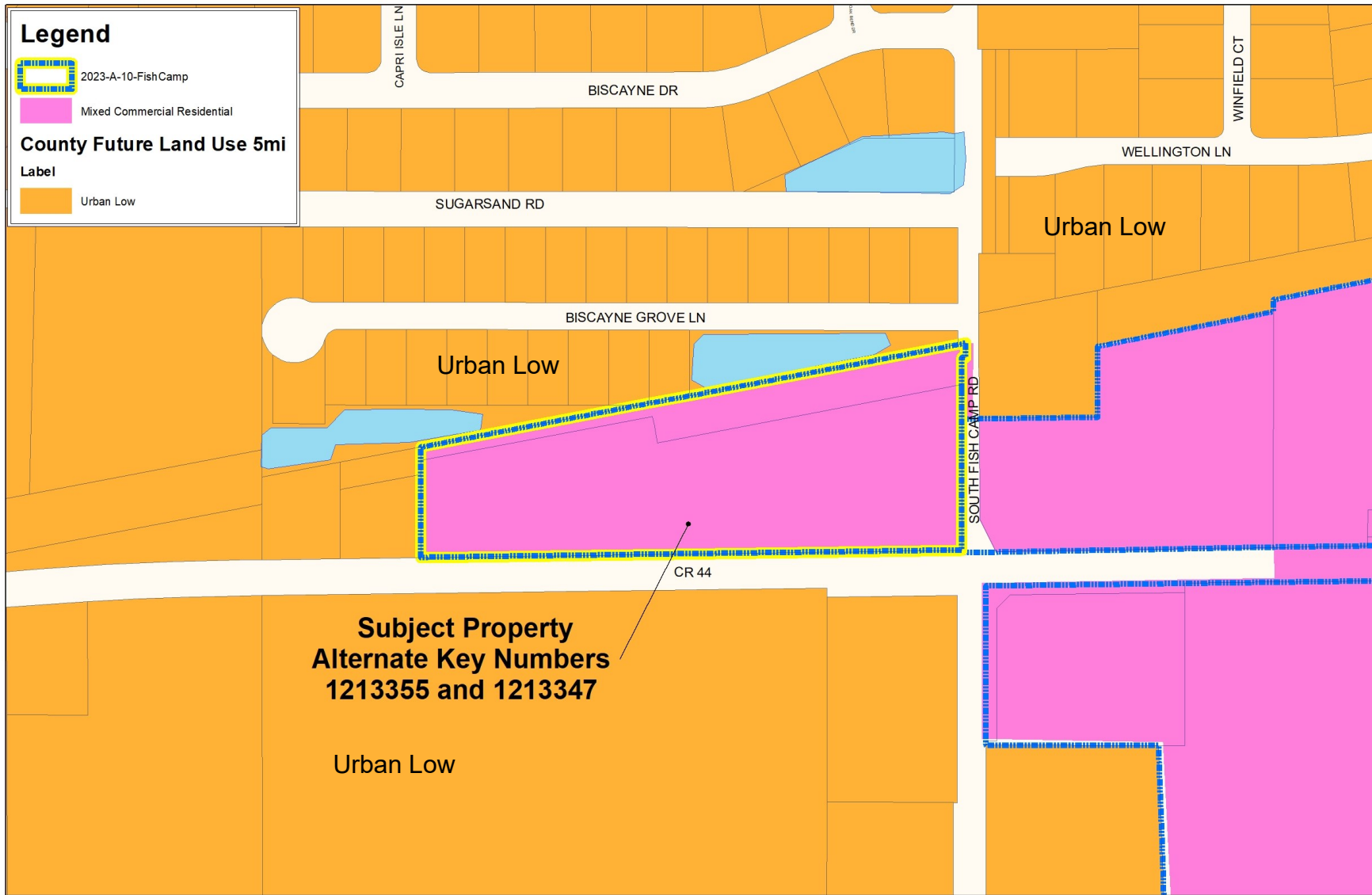


**Legend**

-  2023-A-10-Fish Camp
-  Mixed Commercial Residential

**County Future Land Use 5mi**

- Label**
-  Urban Low

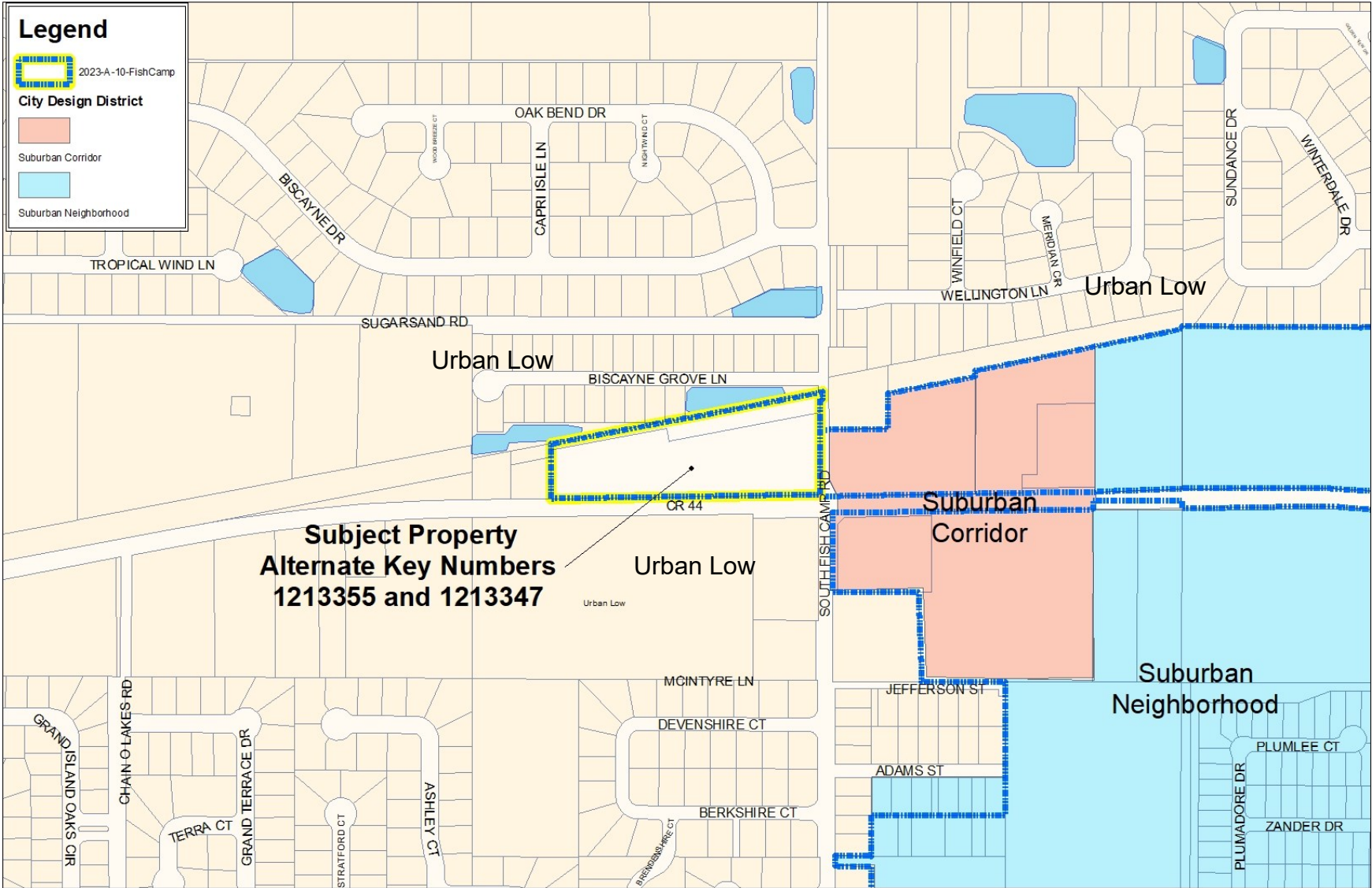


Suzan EP Vandavelde, Trustee, Et Al  
Future Land Use (Proposed)



**Legend**

-  2023-A-10-FishCamp
- City Design District**
-  Suburban Corridor
-  Suburban Neighborhood



Suzan EP Vandeveld, Trustee, Et Al  
 Design District (Before)

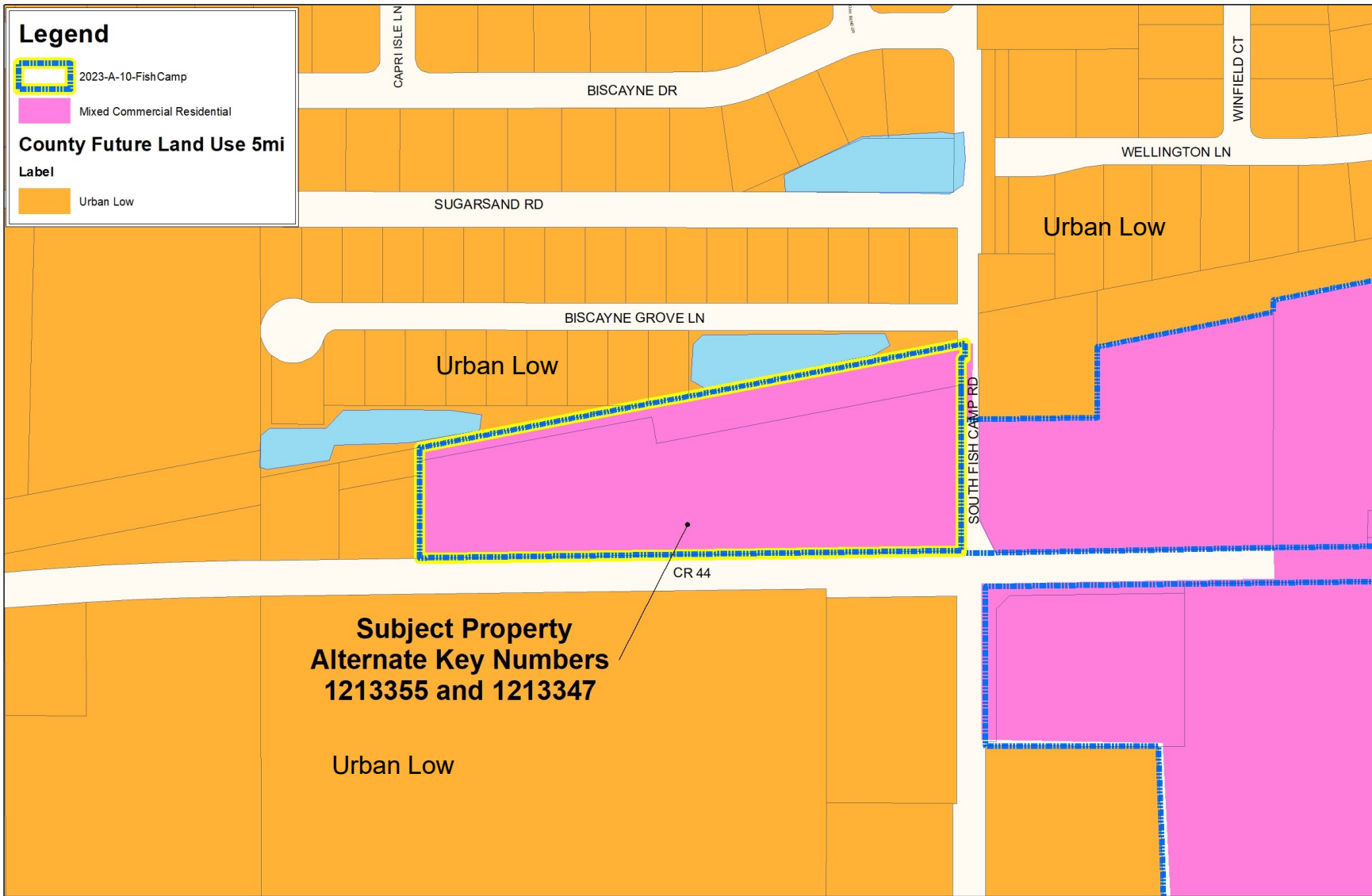


**Legend**

-  2023-A-10-Fish Camp
-  Mixed Commercial Residential

**County Future Land Use 5mi**

- Label**
-  Urban Low

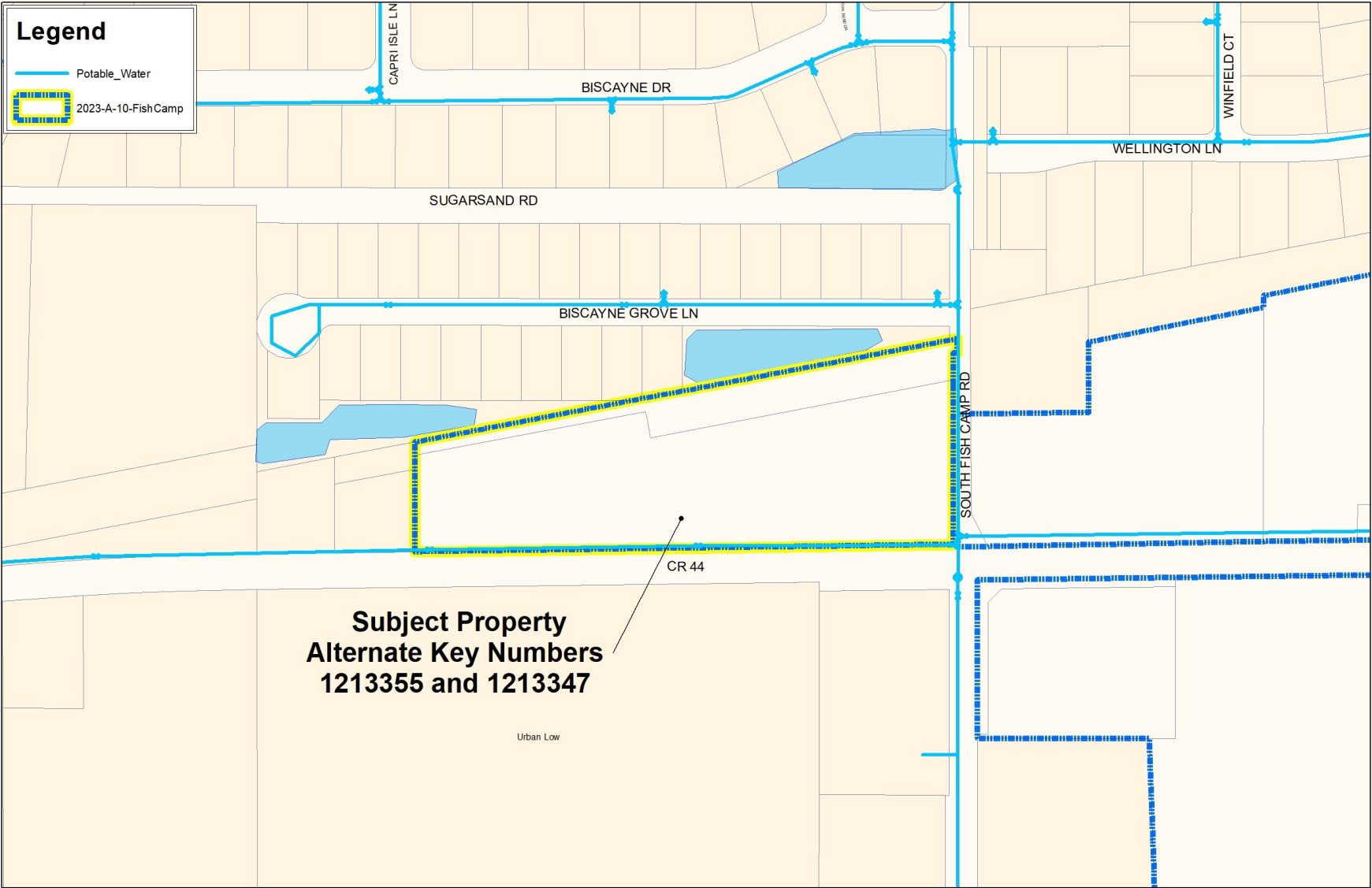


Suzan EP Vandavelde, Trustee, Et Al  
Design District (After)



**Legend**

- Potable\_Water
- ▭ 2023-A-10-Fish Camp



**Subject Property  
Alternate Key Numbers  
1213355 and 1213347**

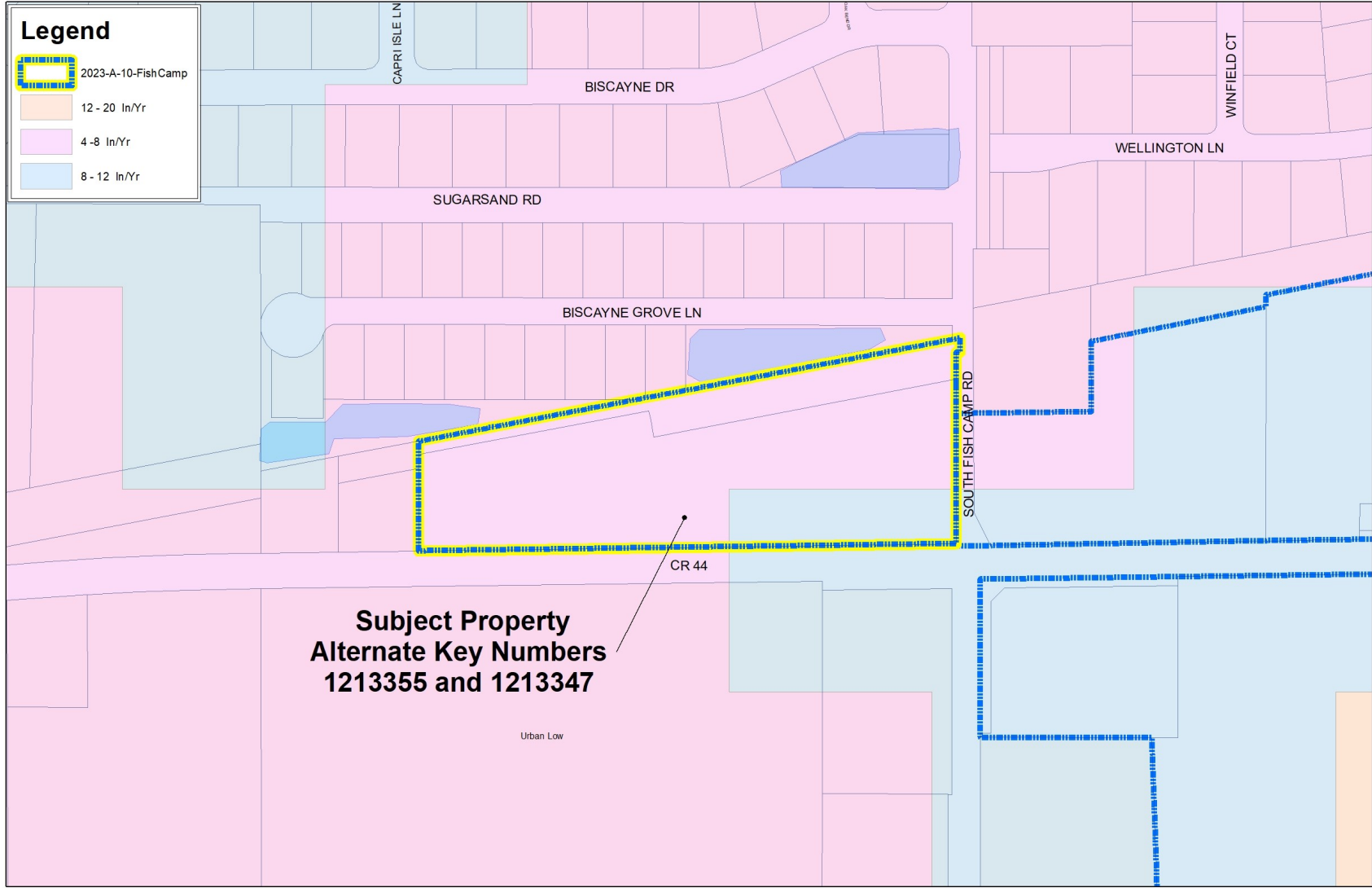
Urban Low

CR 44



Suzan EP Vandavelde, Trustee, Et Al  
Utilities

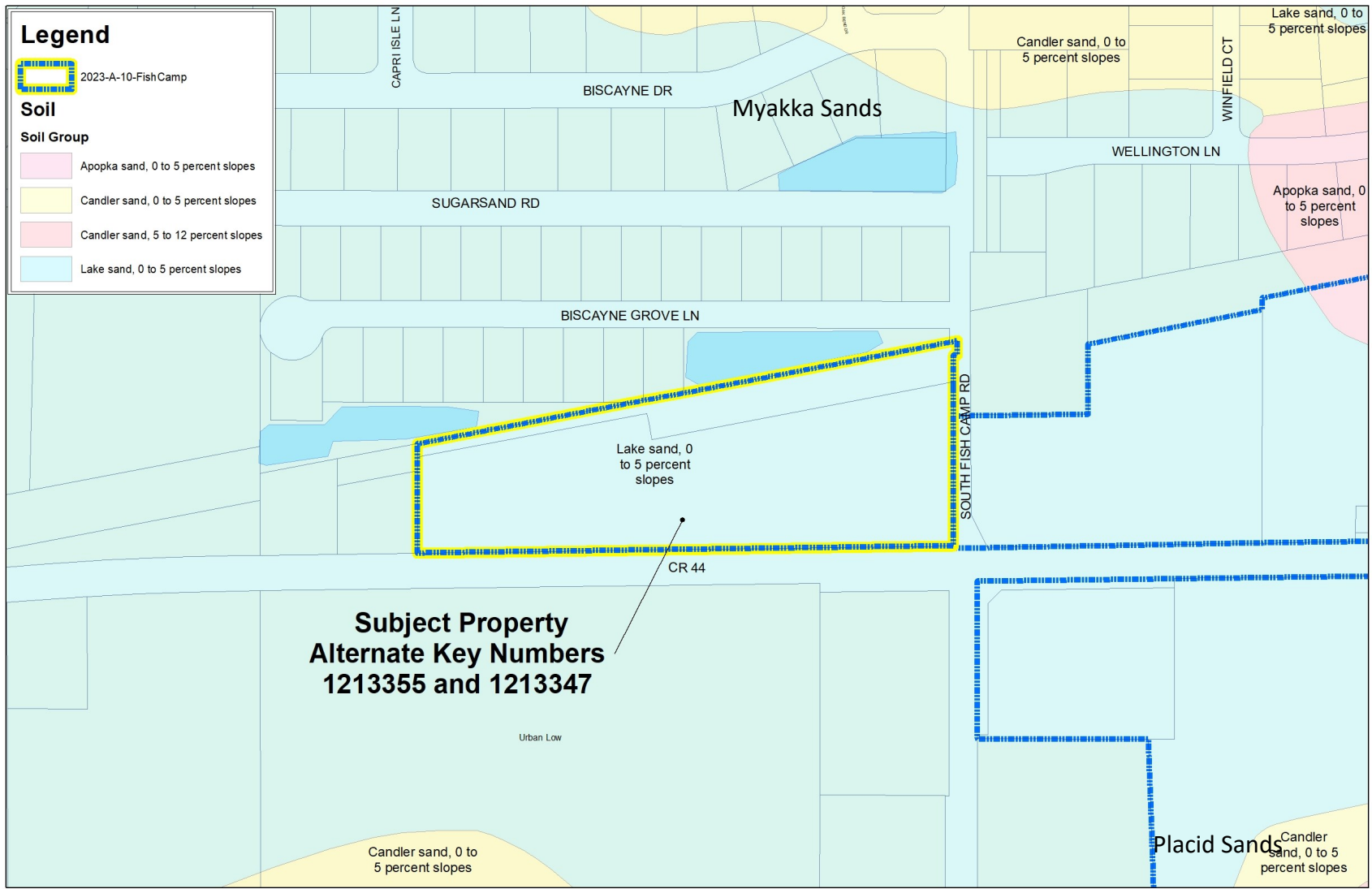




Suzan EP Vandavelde, Trustee, Et Al  
 Potential Recharge







Suzan EP Vandavelde, Trustee, Et Al  
USGS Soils Survey Map

