

# Plan 370-Roosevelt CMU v5.0



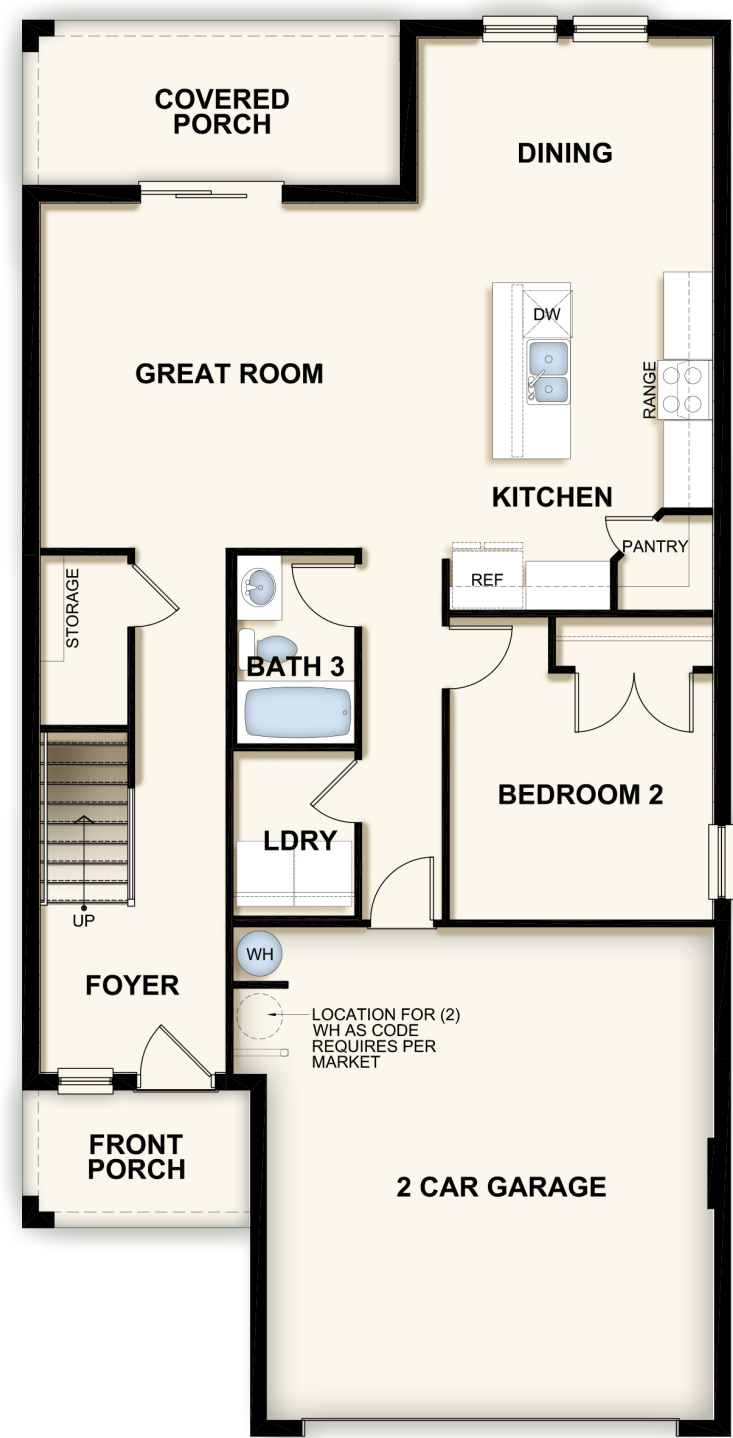
**Plan 370-Roosevelt CMU v5.0**  
2 Story | 5 Bedroom | 3 Bath | 2 Car Garage  
1st Floor 9'-4" Ceilings | 2nd Floor 8' Ceilings  
with Vinyl Plank Flooring throughout

Rev 07.20.22

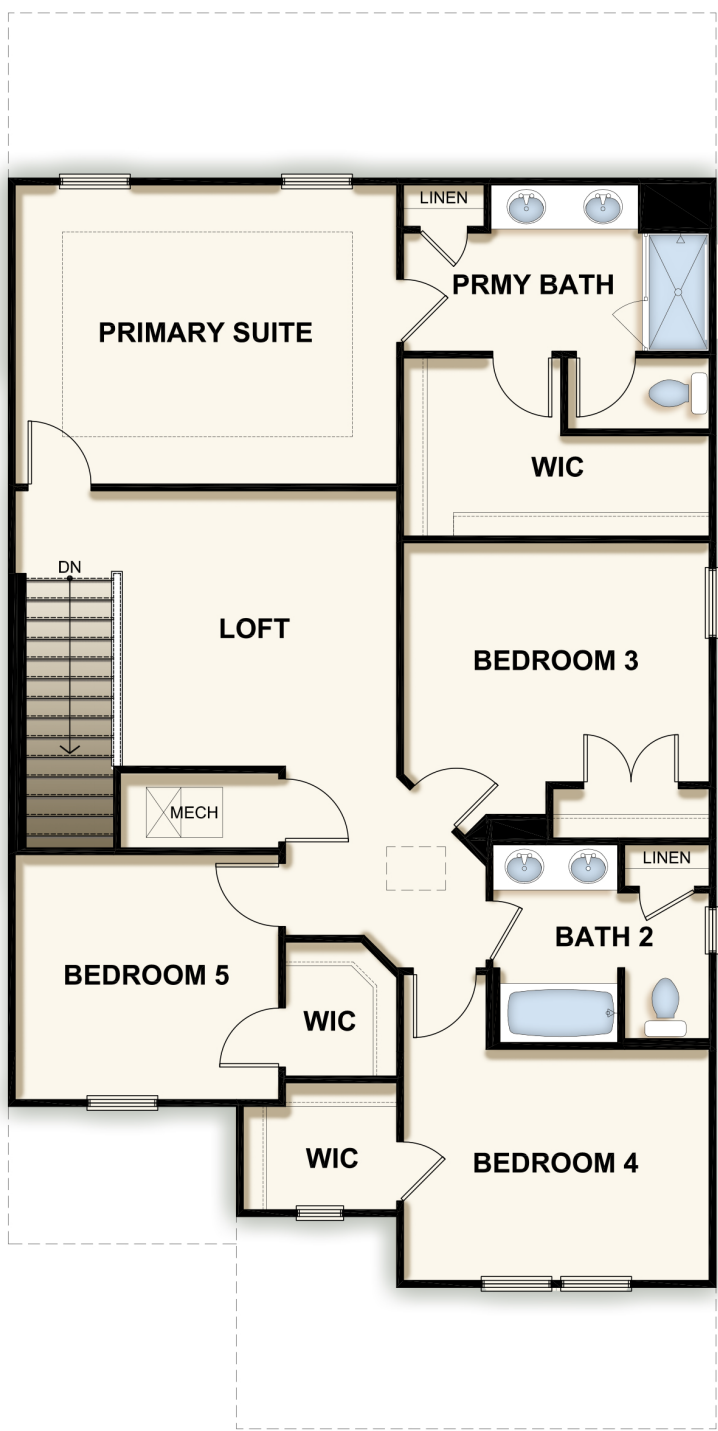




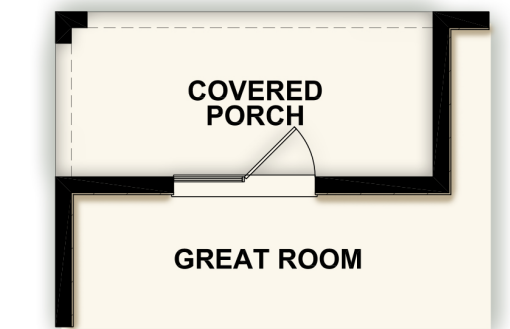
# Plan 370-Roosevelt CMU v5.0



FIRST FLOOR PLAN  
BASE ELEVATION SHOWN



SECOND FLOOR PLAN  
BASE ELEVATION SHOWN



OPTIONAL 6068 FRENCH DOOR

**Plan 370-Roosevelt CMU v5.0**  
2 Story | 5 Bedroom | 3 Bath | 2 Car Garage  
1st Floor 9'-4" Ceilings | 2nd Floor 8' Ceilings  
with Vinyl Plank Flooring throughout

Rev 07.20.22

