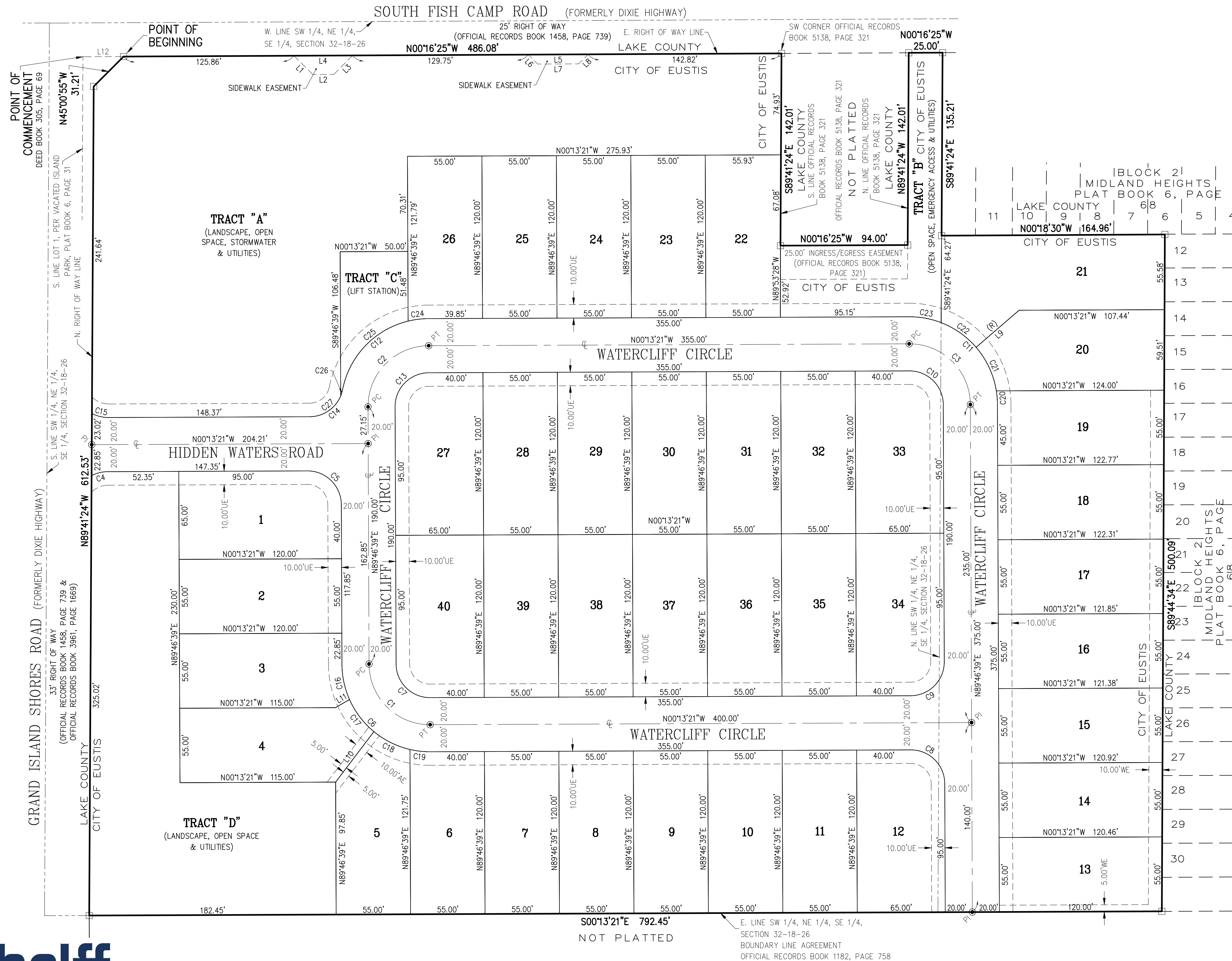
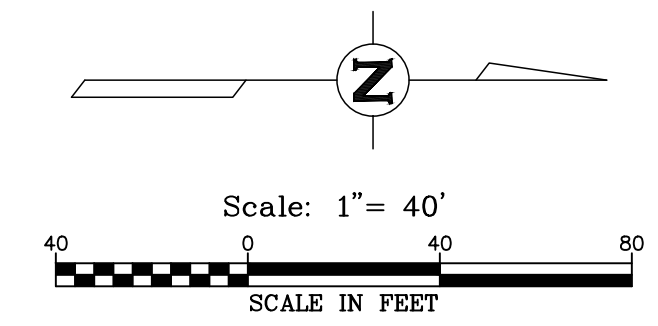


GRAND ISLE

A REPLAT OF LOTS 31 THROUGH 49, BLOCK 2, MIDLAND HEIGHTS, PLAT BOOK 6, PAGE 68, AND PART OF THE SOUTHEAST 1/4 OF SECTION 32, TOWNSHIP 18 SOUTH, RANGE 26 EAST, CITY OF EUSTIS, LAKE COUNTY, FLORIDA



CURVE TABLE					
CURVE NO.	CENTRAL ANGLE	RADIUS	ARC LENGTH	CHORD	CHORD BEARING
C1	90°00'00"	45.00'	70.69'	63.64'	N44°46'39"E
C2	90°00'00"	45.00'	70.69'	63.64'	S45°13'21"E
C3	90°00'00"	45.00'	70.69'	63.64'	S44°46'39"W
C4	26°33'32"	27.00'	12.52'	12.40'	S13°30'07"E
C5	90°00'00"	25.00'	39.27'	35.36'	S44°46'39"W
C6	90°00'00"	65.00'	102.10'	91.92'	N44°46'39"E
C7	90°00'00"	25.00'	39.27'	35.36'	N44°46'39"E
C8	90°00'00"	25.00'	39.27'	35.36'	S44°46'39"W
C9	90°00'00"	25.00'	39.27'	35.36'	N45°13'21"W
C10	90°00'00"	25.00'	39.27'	35.36'	S44°46'39"W
C11	90°00'00"	65.00'	102.10'	91.92'	S44°46'39"W
C12	78°33'32"	65.00'	89.12'	82.30'	S39°30'07"E
C13	90°00'00"	25.00'	39.27'	35.36'	S45°13'21"E
C14	78°33'32"	25.00'	34.28'	31.66'	N39°30'07"W
C15	27°22'21"	27.00'	12.90'	12.78'	N13°27'49"E
C16	23°46'19"	65.00'	26.97'	26.78'	N77°53'29"E
C17	26°26'39"	65.00'	30.00'	29.73'	N52°47'01"E
C18	26°26'39"	65.00'	30.00'	29.73'	N26°20'21"E
C19	13°20'23"	65.00'	15.13'	15.10'	N6°26'50"E
C20	8°51'00"	65.00'	10.04'	10.03'	S85°21'09"W
C21	31°40'58"	65.00'	35.94'	35.49'	S65°05'10"W
C22	28°08'57"	65.00'	31.93'	31.61'	S35°10'13"W
C23	21°19'05"	65.00'	24.18'	24.05'	S10°26'11"W
C24	13°28'33"	65.00'	15.29'	15.25'	S6°57'38"E
C25	65°04'58"	65.00'	73.83'	69.93'	S46°14'24"E
C26	11°15'15"	25.00'	4.91'	4.90'	N73°09'15"W
C27	67°18'16"	25.00'	29.37'	27.71'	N33°52'29"W

LINE TABLE		
LINE NO.	DIRECTION	LENGTH
L1	N44°43'35"E	19.67'
L2	N0°16'17"W	15.53'
L3	N45°16'25"W	19.67'
L4	N0°16'25"W	43.35'
L5	N0°16'25"W	44.30'
L6	N44°43'35"E	9.90'
L7	N0°16'25"W	30.30'
L8	N45°16'25"W	9.90'
L9	N40°45'18"W	41.95'
L10	N52°51'24"W	46.80'
L11	N29°42'54"W	12.08'
L12	N0°16'25"W	30.00'