

COLONIAL REVIVAL

The Colonial Revival style was introduced at the Philadelphia Exposition of 1876. This celebration of the centennial of the United States fueled a nostalgia for early America, and sparked a renewed interest in the architecture of the colonial period. There are three basic types of Colonial Revival buildings:

- the historically accurate reproduction of 17th century Georgian and Federal styles,
- Colonial or Classical elements applied to Victorian or Post-Victorian buildings, and
- simple vernacular homes with Colonial details.

The typical Colonial Revival house in Florida, which emerged in the late 1880's, is a mix of several colonial designs rather than a direct copy of a single style.

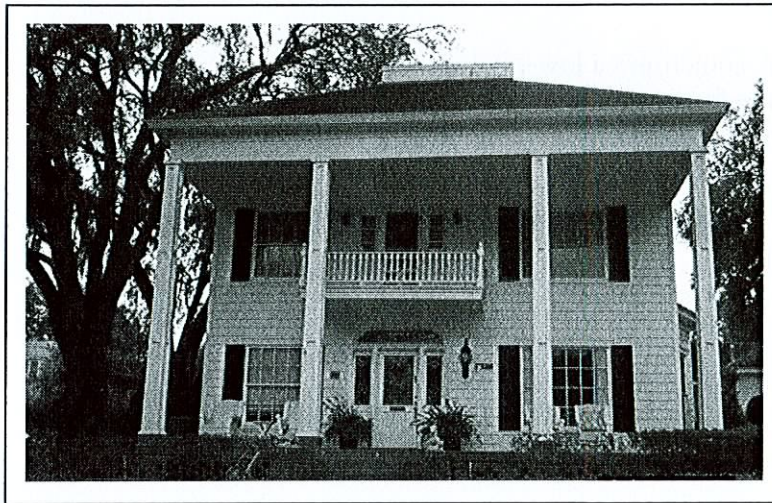


Figure 3-33: Colonial Revival with Federal elements

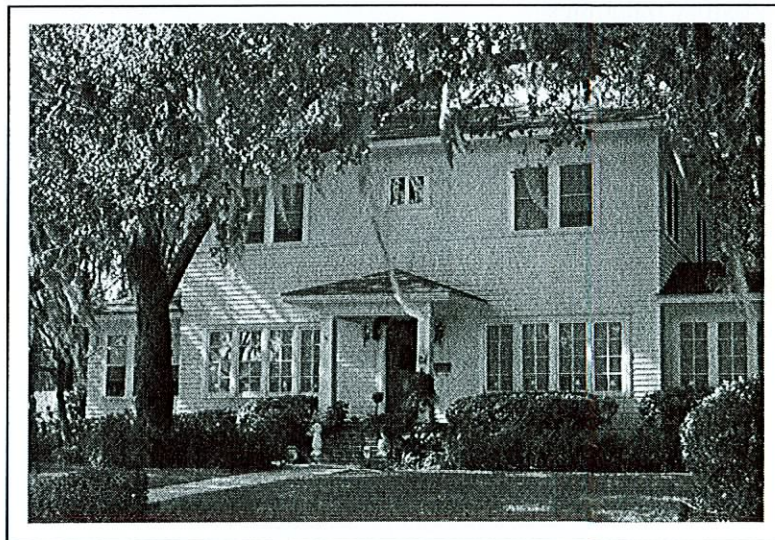


Figure 3-34: Colonial Revival

Features of the Colonial Revival Style

Plans

- Two story
- Entrance stairs typically centered on the main facade

Foundations

- Simple brick piers; concrete piers used at later times
- Spaces between piers left open to allow for ventilation and for protection from high water

Porches and Facades

- Porches may be portico/simple entry porches, or may stretch the length of the building
- May have a porch on the rear
- Simple, classical columns spaced evenly across the front facade
- Simple railings and balusters, when present
- Symmetrical facade

Roofs

- Gable, hip, or gambrel roof
- Roof over porch is typically shed or low-sloped hip roof
- Dormers with hip, gable or shed roofs are a defining characteristic
- Rafter ends are typically exposed and decoratively cut
- Composition shingles are the most often used; occasional metal roof coverings
- Chimneys are brick with simple coursing, shoulder and corbel details

Exterior

- Horizontal wood siding

Windows and Doors

- Paired double-hung wood sash windows with 6/6 or 2/2 divided panes; occasionally the upper sash is divided while the lower is a single pane
- Windows are detailed with simple surrounds
- Windows sometimes framed by wooden or wrought iron grills
- Doors often flanked by fixed glass sidelights, surrounded by simple classical trim

Exterior Decoration

- Pediments
- Broken pediments
- Wood shutters