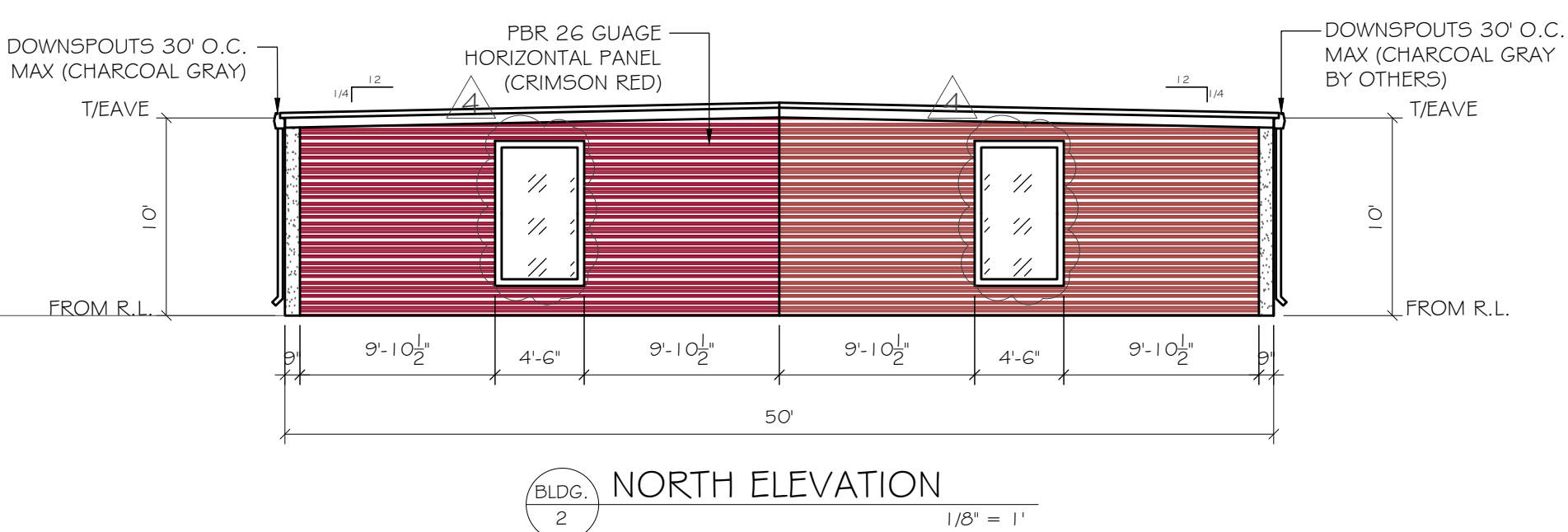
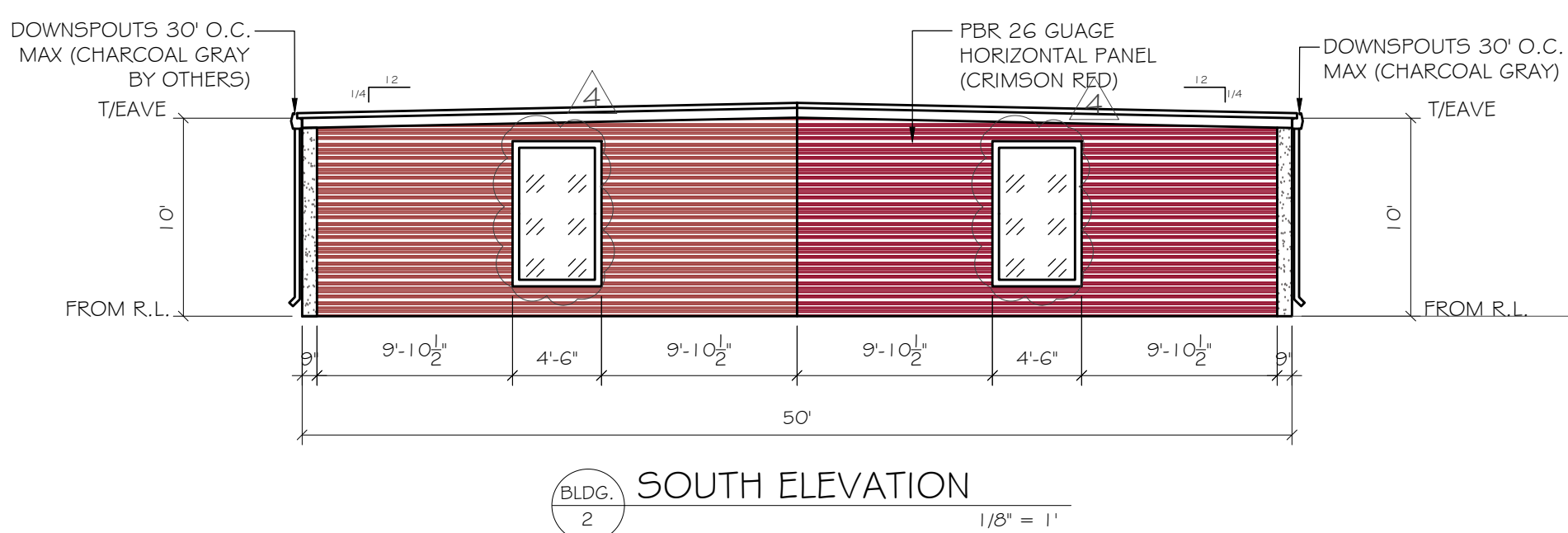
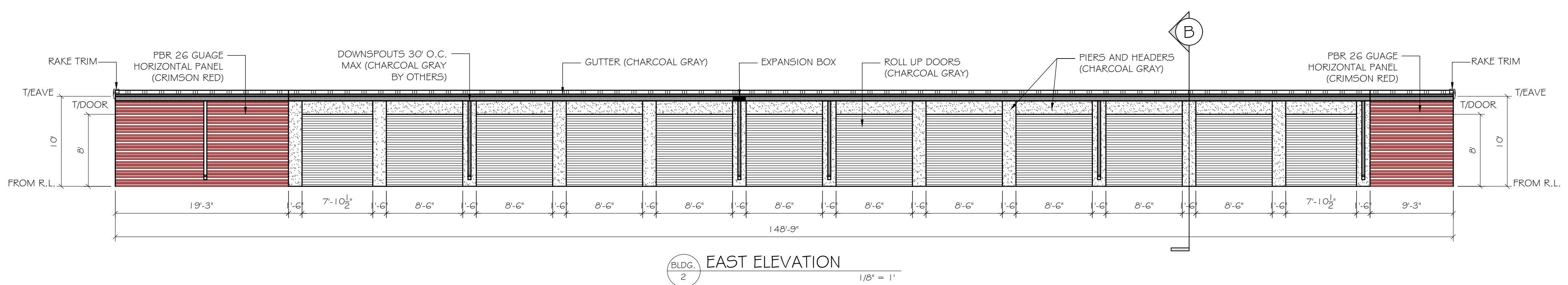
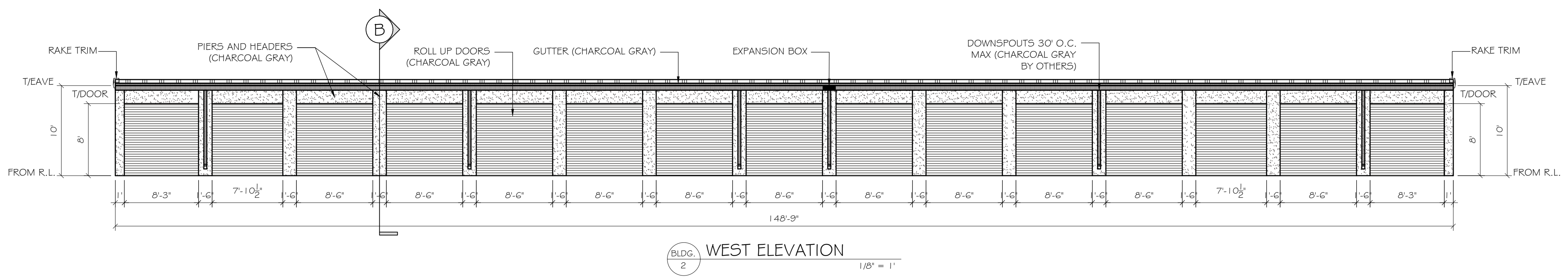


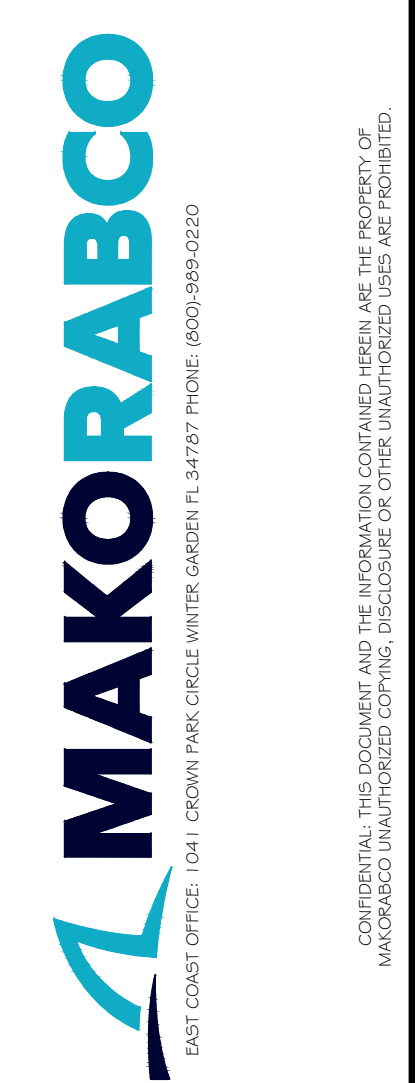
MARKUPS / REVISIONS			
NO.	BY	ISSUE	DATE
1	SRW	MARKUPS	01-19-24
4	SRW	FAUX WINDOWS	06-25-24



MBCI TRUE COLOR CODE							
COLOR	AUTOCAD (TRUE COLORS)			SIGNATURE 300			
	R	G	B	SR#	SR#	LRV	HEX#
CHARCOAL GRAY	101	00	98	0.38	41	12.78%	#656462
CRIMSON RED	60	64	65	---	---	11.57%	#A0403F

NOTES:
ALL MAN DOORS, ROLL-UP DOORS, SLIDING GLASS DOORS, WINDOWS AND TRANSOMS SHALL BE FIELD VERIFIED PRIOR TO FABRICATION TO ENSURE PROPER FIT. G.C./SUBCONTRACTOR SHALL NOT FABRICATE FROM THE CONSTRUCTION DOCUMENTS, SHOULD THE G.C./SUBCONTRACTOR CHOOSE TO FABRICATE THE PREVIOUSLY REFERENCED ITEMS FROM THE CONTRACT/PROPOSAL DOCUMENTS AND NOT FROM THE FIELD THEY DO SO AT THEIR OWN RISK AND ANY AND ALL MODIFICATIONS REQUIRED AS A RESULT SHALL BE AT THEIR OWN EXPENSE.

NOTE:
GC SHALL COORDINATE ALL TCMU WALL HEIGHTS WITH RABCO ENTERPRISES, LLC PRIOR TO CONSTRUCTION TO ENSURE PROPER FIT OF THE METAL BUILDING COMPONENTS. FAILURE TO GET WRITTEN APPROVAL PRIOR TO ERECTING THE CMU WALLS MAY RESULT IN NEEDED MODIFICATIONS TO EITHER THE CMU WALL AND/OR THE METAL BUILDING COMPONENTS AT THE G.C.'S EXPENSE.



EUSTIS SELF STORAGE
DAVID WALKER DRIVE
EUSTIS, FL 32726

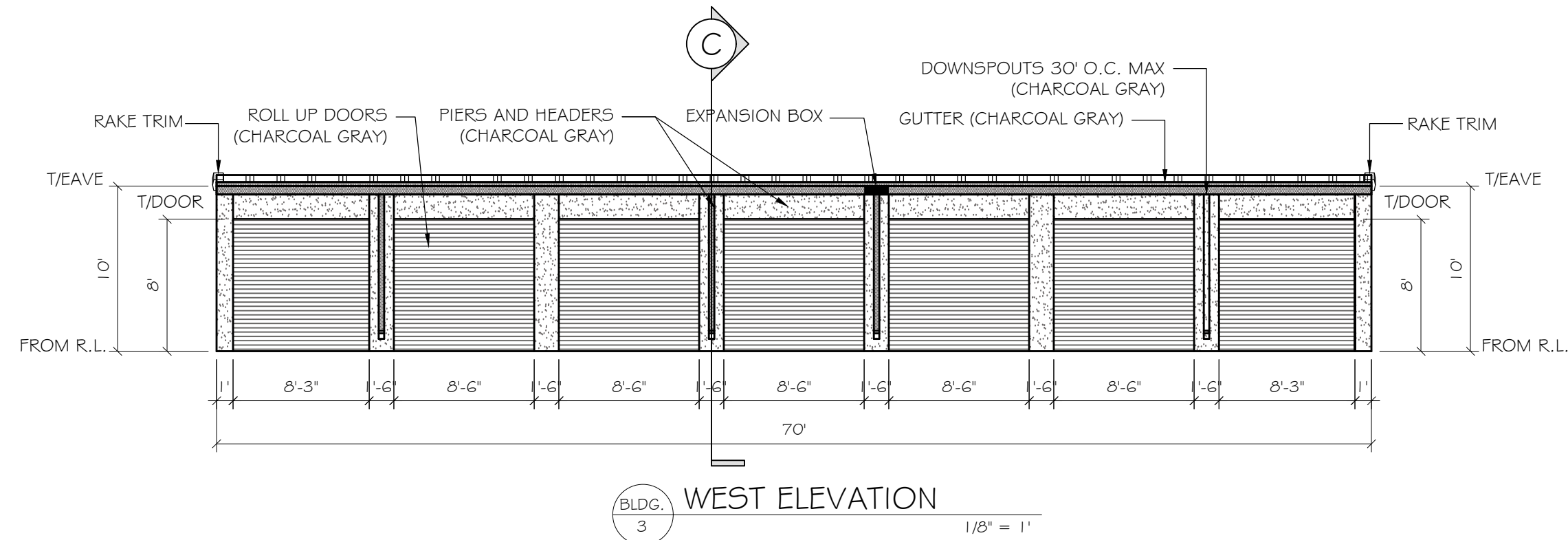
ENGINEER STAMP

ENGINEER
RBE CONSULTING SERVICES, LLC
1805 W. PALM BEACH BLVD. SUITE 200
WEST PALM BEACH, FL 33411
TEL: 561-833-1111
WWW.RBECONSULTING.COM
FL REG. NO. 12547
THE CONSULTING SERVICES, LLC hereby certifies that the design and construction of the project shown on this drawing was prepared by a duly licensed professional engineer under the supervision and control of the professional engineer whose name and registration number are shown on this drawing.

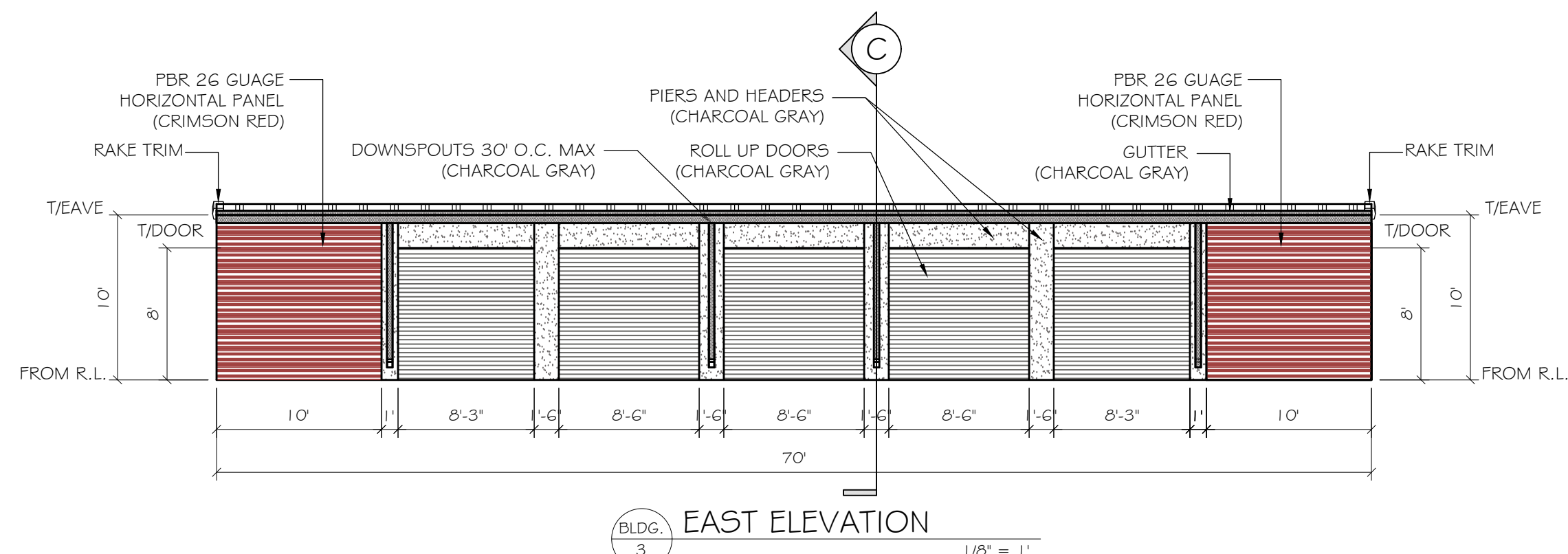
BLDG. 2 ELEVATIONS

DATE: 01-10-24
DRAWN BY: SRW
CHECKED BY: JS
JOB NO.: 2747
SCALE: AS NOTED
SHEET

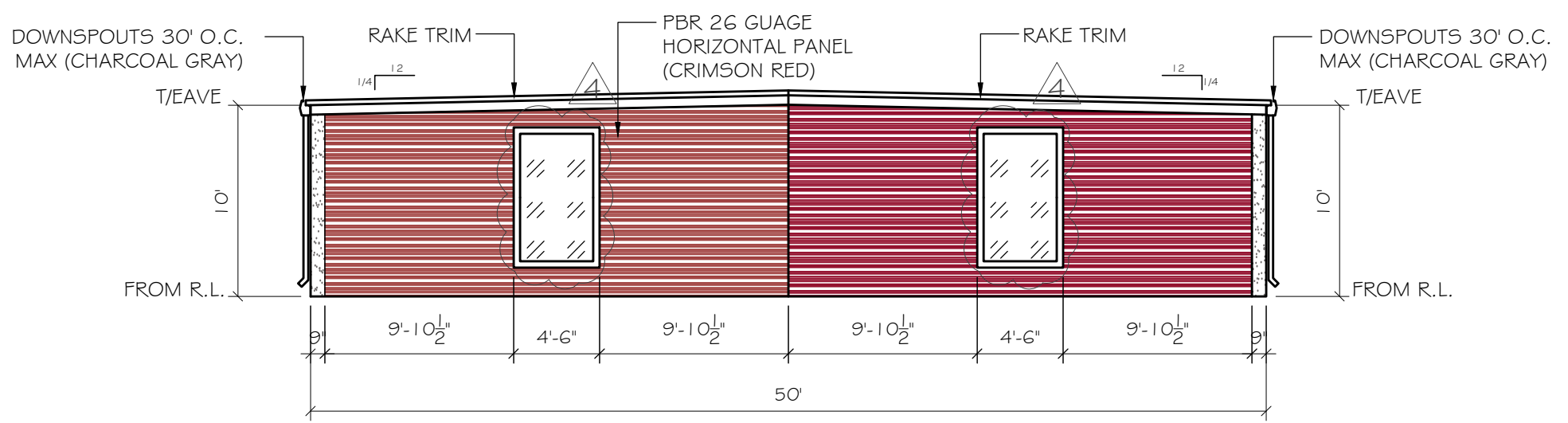
MARKUPS / REVISIONS			
NO.	BY	ISSUE	DATE
1	SRW	MARKUPS	01-19-24
4	SRW	FALSE WINDOWS	06-25-24



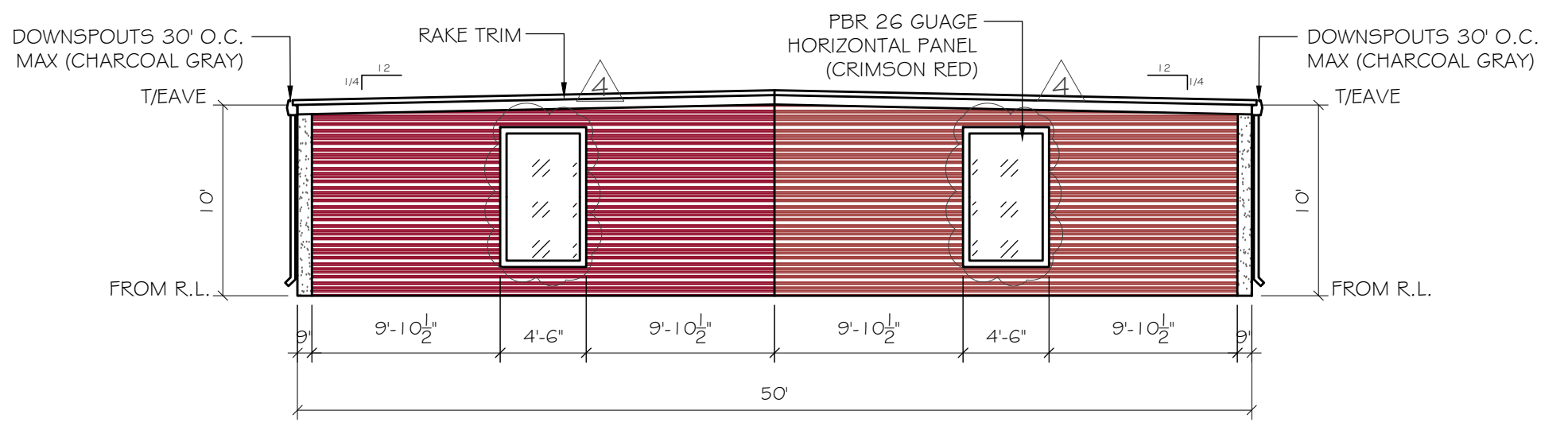
BLDG. 3 WEST ELEVATION
1/8" = 1'



BLDG. 3 EAST ELEVATION
1/8" = 1'



BLDG. 3 SOUTH ELEVATION
1/8" = 1'

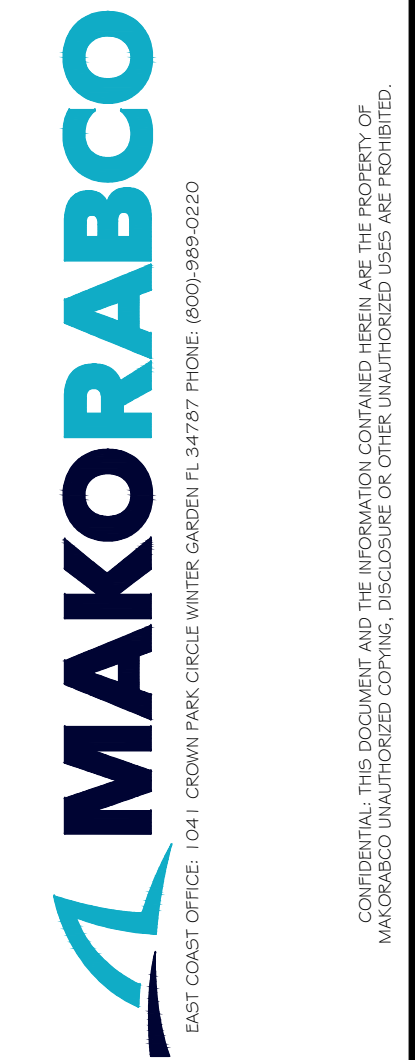


BLDG. 3 NORTH ELEVATION
1/8" = 1'

MBCI TRUE COLOR CODE							
COLOR	AUTOCAD (TRUE COLORS)			SIGNATURE 300			
	CODING			CODING			
	R	G	B	SR#	SRJ#	LRV	HEX#
CHARCOAL GRAY	10	80	88	0.38	41	12.78%	#656462
CRIMSON RED	180	68	65	---	---	11.57%	#A0403F

NOTES:
ALL MAN DOORS, ROLL-UP DOORS, SLIDING GLASS DOORS, WINDOWS AND TRANSOMS SHALL BE FIELD VERIFIED PRIOR TO FABRICATION TO ENSURE PROPER FIT. G.C./SUBCONTRACTOR SHALL NOT FABRICATE FROM THE CONSTRUCTION DOCUMENTS. SHOULD THE G.C./SUBCONTRACTOR CHOOSE TO FABRICATE THE PREVIOUSLY REFERENCED ITEMS FROM THE CONTRACT/PROPOSAL DOCUMENTS AND NOT FROM THE FIELD THEY DO SO AT THEIR OWN RISK AND ANY AND ALL MODIFICATIONS REQUIRED AS A RESULT SHALL BE AT THEIR OWN EXPENSE.

NOTE:
GC SHALL COORDINATE ALL TCMU WALL HEIGHTS WITH RABCO ENTERPRISES, LLC PRIOR TO CONSTRUCTION TO ENSURE PROPER FIT OF THE METAL BUILDING COMPONENTS. FAILURE TO GET WRITTEN APPROVAL PRIOR TO ERRECTING THE CMU WALLS MAY RESULT IN NEEDED MODIFICATIONS TO EITHER THE CMU WALL AND/OR THE METAL BUILDING COMPONENTS AT THE G.C.'S EXPENSE.



EUSTIS SELF STORAGE
DAVID WALKER DRIVE
EUSTIS, FL 32726

ENGINEER STAMP

ENGINEER
RBE CONSULTING SERVICES, LLC
1805 S.W. 14TH AVENUE, SUITE 200, MIAMI, FL 33135
PH: 305.444.1111 FAX: 305.444.1112
WWW.RBECONSULTING.COM
THE CONSULTING SERVICES, LLC, PROJECT NO. 24-0001-001
DATE: 01-19-24
DRAWN BY: SRW
CHECKED BY: J5
JOB NO.: 2747
SCALE: AS NOTED
SHEET

SHEET TITLE
BLDG. 3
ELEVATIONS

DATE: 01-10-24
DRAWN BY: SRW
CHECKED BY: J5
JOB NO.: 2747
SCALE: AS NOTED
SHEET

