

PARKING SCHEDULE	
TYPE	COUNT
10' x 20' - 90 deg	41
12'-0" x 20'-0" (5'-0" Aisle)	2
14' x 60' - 90 deg	26
wheel_stop_6TB	41
wheel_stop_6TB	5
Grand total:	115

SITE AREA SCHEDULE	
GROSS SITE AREA	
GROSS SF	283,612 SF
GRAND TOTAL: 1	283,612 SF

ADJACENT PROPERTY (NOT PART OF CONSTRUCTION PROJECT)

ADJACENT PROPERTY (NOT PART OF CONSTRUCTION PROJECT)

ADJACENT PROPERTY (NOT PART OF CONSTRUCTION PROJECT)

ADJACENT PROPERTY (NOT PART OF CONSTRUCTION PROJECT)

1
A0.01
SITE
1" = 30'-0"



CLIENT:
LAKE SUMTER
STATE COLLEGE

PROJECT:
**CDL & ULW
CENTER**

CONSULTANT:
FADEN BUILDERS, INC
742 S. ROSSITER ST.
MT. DORA, FLORIDA 32757

CONSULTANT:
JH&A CONSTRUCTION & ENGINEERING
206 FL-79
PANAMA CITY BEACH, FL 32413

CONSULTANT:
SPRINGSTEAD ENGINEERING INC.
727 S 14TH STREET,
LEESBURG, FL 34748

CONSULTANT:
HANSON PROFESSIONAL SERVICES INC.
910 N WALKESHA STREET,
BONIFAY, FL 32425



SEAL:

**SCHEMATIC
DESIGN**

SCALE: 1" = 30'-0"	DATE: 01/01/21
DRAWN BY: Author	CHECKED BY: Checker

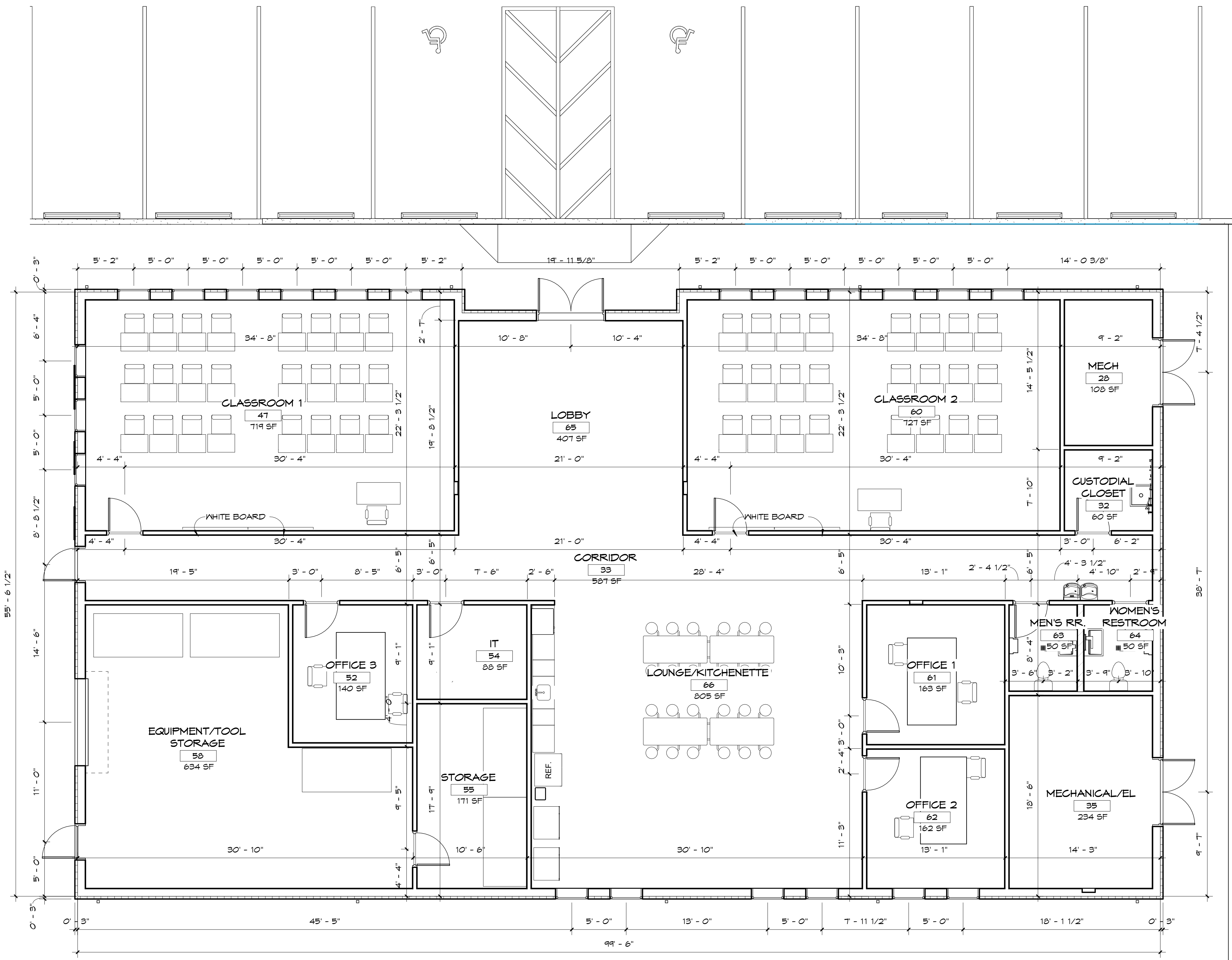
NO	REVISION	DATE

SHEET TITLE:
**ARCHITECTURAL
SITE PLANS**

PROJECT NO.
4274-21

SHEET NO.
A0.01

Copyright: 2024 BY FLORIDA ARCHITECTS, INC. ARCHITECT EXPRESSLY RESERVES HIS EXCLUSIVE COMMON LAW COPYRIGHT AND PROPERTY RIGHTS TO THESE DRAWINGS WHICH MAY NOT BE REPRODUCED, CHANGED OR COPIED IN ANY FORM OR MANNER, NOR ARE THEY TO BE ASSIGNED TO ANY PARTY WITHOUT THE ARCHITECT'S WRITTEN CONSENT.



ROOM SCHEDULE OPT. 3	
NAME	AREA
MECH	108 SF
CUSTODIAL CLOSET	60 SF
CORRIDOR	507 SF
MECHANICAL/EL	234 SF
CLASSROOM 1	719 SF
OFFICE 3	140 SF
IT	88 SF
STORAGE	171 SF
EQUIPMENT/TOOL STORAGE	634 SF
CLASSROOM 2	721 SF
OFFICE 1	163 SF
OFFICE 2	162 SF
MEN'S RR.	50 SF
WOMEN'S RESTROOM	50 SF
LOBBY	407 SF
LOUNGE/KITCHENETTE	805 SF
5,105 SF	

MAIN BUILDING GROSS SF OPT. 3	
Area	
	5,567 SF

1 FLOOR PLAN OPT. 3
A1.01 | 3/16" = 1'-0"

SEAL:

**SCHEMATIC
DESIGN**

SCALE: 3/16" = 1'-0"	DATE: 01/01/21
DRAWN BY: Author	CHECKED BY: Checker

NO	REVISION	DATE

SHEET TITLE:
**FLOOR PLANS OPT.
3**

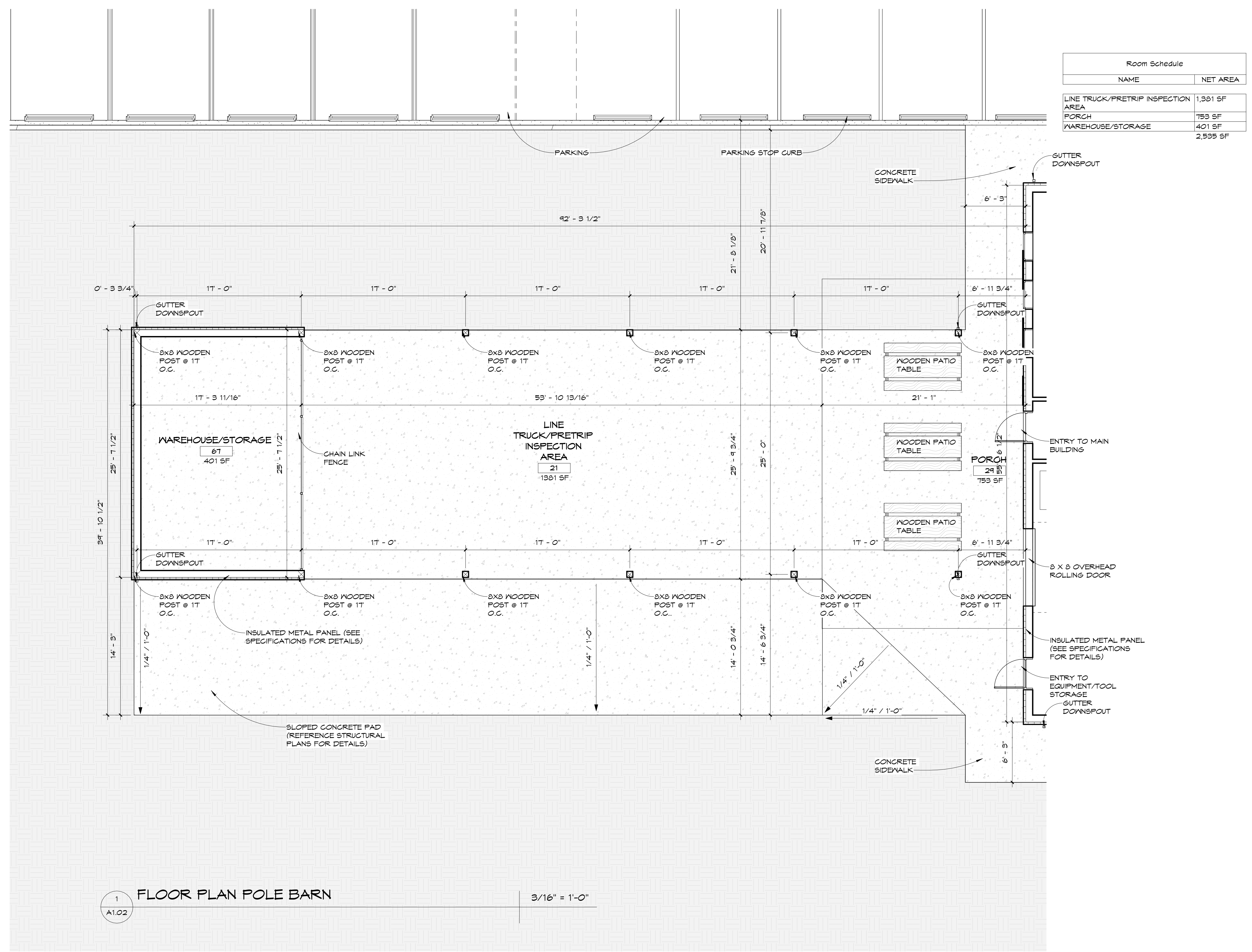
Copyright: 2024 BY FLORIDA ARCHITECTS, INC. ARCHITECT EXPRESSLY RESERVES HIS EXCLUSIVE COMMON LAW COPYRIGHT AND PROPERTY RIGHTS TO THESE DRAWINGS WHICH MAY NOT BE REPRODUCED, CHANGED OR COPIED IN ANY FORM OR MANNER, NOR ARE THEY TO BE ASSIGNED TO ANY PARTY WITHOUT THE ARCHITECT'S WRITTEN CONSENT.

SEAL:

SCHEMATIC DESIGN

SCALE: 3/16" = 1'-0"	DATE: 01/01/21	
DRAWN BY: Author	CHECKED BY: Checker	
NO	REVISION	DATE

SHEET TITLE:
FLOOR PLANS POLE BARN



1 FLOOR PLAN POLE BARN 3/16" = 1'-0"

Copyright: 2024 BY FLORIDA ARCHITECTS, INC. ARCHITECT EXPRESSLY RESERVES HIS EXCLUSIVE COMMON LAW COPYRIGHT AND PROPERTY RIGHTS TO THESE DRAWINGS WHICH MAY NOT BE REPRODUCED, CHANGED OR COPIED IN ANY FORM OR MANNER, NOR ARE THEY TO BE ASSIGNED TO ANY PARTY WITHOUT THE ARCHITECT'S WRITTEN CONSENT.



1 3D VIEW FLOOR PLAN OPT. 3
A9.00



2 3D VIEW FRONT FLOOR PLAN OPT. 3
A9.00

SEAL:

SCHEMATIC DESIGN

SCALE:	DATE:	
	01/01/21	
DRAWN BY:	CHECKED BY:	
Author	Checker	
NO	REVISION	DATE

SHEET TITLE:
3D DRAWINGS

Copyright: 2024 BY FLORIDA ARCHITECTS, INC. ARCHITECT EXPRESSLY RESERVES HIS EXCLUSIVE COMMON LAW COPYRIGHT AND PROPERTY RIGHTS TO THESE DRAWINGS WHICH MAY NOT BE REPRODUCED, CHANGED OR COPIED IN ANY FORM OR MANNER, NOR ARE THEY TO BE ASSIGNED TO ANY PARTY WITHOUT THE ARCHITECT'S WRITTEN CONSENT.