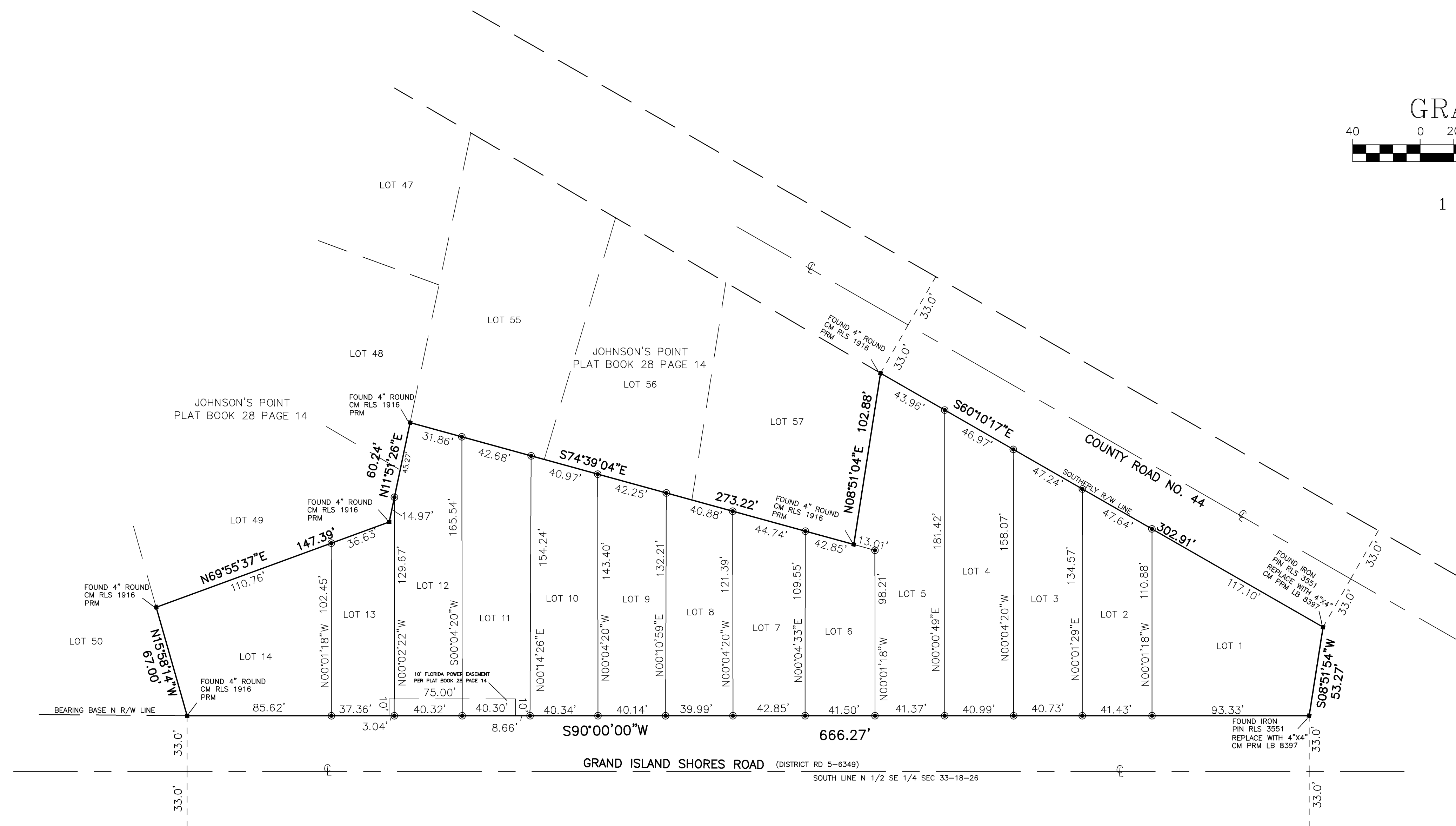
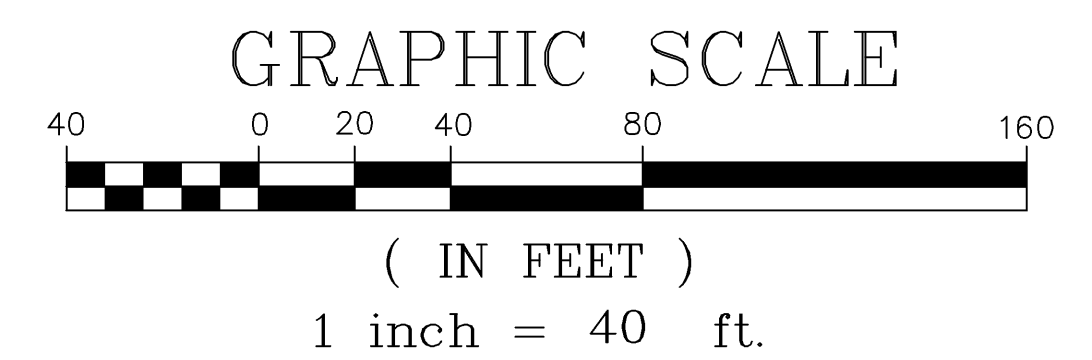


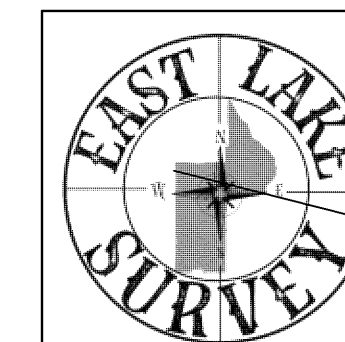
JOHNSON'S POINT TOWNHOMES

A REPLAT OF
OF LOTS 51 THROUGH 54 AND LOTS 58 THROUGH 60
JOHNSON'S POINT
RECORDED IN PLAT BOOK 28, PAGE 14,
SECTION 33, TOWNSHIP 18 SOUTH, RANGE 26 EAST
CITY OF EUSTIS, LAKE COUNTY, FLORIDA



LEGEND

- PRM = PERMANENT REFERENCE MONUMENT
- PCP = PERMANENT CONTROL POINT
- RLS = REGISTERED LAND SURVEYOR
- R/W = RIGHT OF WAY
- CL = CENTERLINE
- PLS = PROFESSIONAL LAND SURVEYOR
- CM = CONCRETE MONUMENT
- = SET IRON PIN LB 8397
- LB = LICENSED BUSINESS



18400 BAKER ROAD
UMATILLA, FLORIDA 32784
PHONE: (352) 355-9827
EASTLAKESURVEY@GMAIL.COM

PROFESSIONAL SURVEYORS AND MAPPERS
LB 8397