

Analysis of Comprehensive Plan/Future Land Use Request (**Ordinance Number 26-07**)

In Accordance with Florida Statutes Chapter 163.3177.9.:

Discourage Urban Sprawl: Primary Indicators of Sprawl:

The future land use element and any amendment to the future land use element shall discourage the proliferation of urban sprawl. The primary indicators that a plan or plan amendment does not discourage the proliferation of urban sprawl are listed below. The evaluation of the presence of these indicators shall consist of an analysis of the plan or plan amendment within the context of features and characteristics unique to each locality in order to determine whether the plan or plan amendment:

Review of Indicators

1. Low Intensity Development:

Promotes, allows, or designates for development substantial areas of the jurisdiction to develop as low-intensity, low-density, or single-use development or uses.

This indicator does not apply. The requested future land use will provide Commercial uses at a major intersection.

2. Urban Development in Rural Areas:

Promotes, allows, or designates significant amounts of urban development to occur in rural areas at substantial distances from existing urban areas while not using undeveloped lands that are available and suitable for development.

This indicator does not apply. The area is a significant intersection in an urbanizing/suburbanizing area.

3. Strip or Isolated Development:

Promotes, allows, or designates urban development in radial, strip, isolated, or ribbon patterns generally emanating from existing urban developments.

This indicator does not apply. The site is within an urbanizing corridor with commercial and industrial land uses designated to the west and residential development to the south.

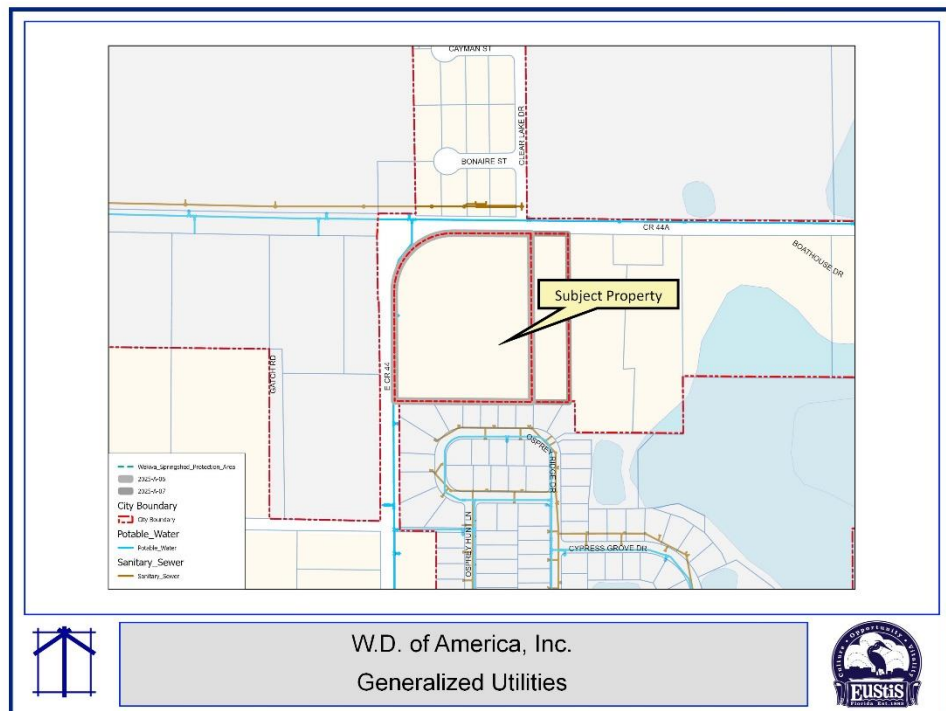
4. Natural Resources Protection:

Fails to adequately protect and conserve natural resources, such as wetlands, floodplains, native vegetation, environmentally sensitive areas, natural groundwater aquifer recharge areas, lakes, rivers, shorelines, beaches, bays, estuarine systems, and other significant natural systems.

This indicator does not apply. The subject property is a tree farm (silviculture) and is currently planted with pine and mixed natural deciduous trees.

5. Agricultural Area Protection:

Fails to adequately protect adjacent agricultural areas and activities, including silviculture, active agricultural and silvicultural activities, passive agricultural activities, and dormant, unique, and prime farmlands and soils.



8. Separation of Urban and Rural:

Fails to provide a clear separation between rural and urban uses.

This indicator does not apply. No other nearby properties contain active agricultural activities or uses. The surrounding area is developed or has development entitlements attached to the land. These developments have densities and intensities that are clearly suburban uses.

9. Infill and Redevelopment:

Discourages or inhibits infill development or the redevelopment of existing neighborhoods and communities.

This indicator does not apply. This property is a logical extension of development for the city.

10. Functional Mix of Uses:

Fails to encourage a functional mix of uses.

This indicator does not apply. The site is surrounded by single-family development on the adjacent properties, which is consistent with permitted uses in the area. A variety of other uses are evident, including various commercial, industrial, and residential uses, within 1 mile of the subject property.

11. Accessibility among Uses:

Results in poor accessibility among linked or related land uses.

This indicator does not apply. The Land Development Regulations include provisions to provide adequate accessibility and linkages between related uses. Development Services will ensure compliance with these standards at the time of development review.

12. Open Space:

Results in the loss of significant amounts of functional open space.

This indicator does not apply. The site does not contain functional open space and is not connected to regionally significant open space.

13. Urban Sprawl:

The future land use element or plan amendment shall be determined to discourage the proliferation of urban sprawl if it incorporates a development pattern or urban form that achieves four or more of the following:

a. Direction of Growth:

Directs or locates economic growth and associated land development to geographic areas of the community in a manner that does not have an adverse impact on and protects natural resources and ecosystems.

The site is adjacent to existing urban/suburban development patterns and is a logical extension of the urban development boundary. The

Comprehensive Plan and Land Development Regulations have provisions to protect natural resources and ecosystems at time of site plan approval.

- b. Efficient and Cost-Effective Services:
Promotes the efficient and cost-effective provision or extension of public infrastructure and services.

Water and sewer service are available.

- c. Walkable and Connected Communities:
Promotes walkable and connected communities and provides for compact development and a mix of uses at densities and intensities that will support a range of housing choices and a multimodal transportation system, including pedestrian, bicycle, and transit, if available.

At the time of development, the site must meet the City's Land Development Regulations relating to connection and sidewalks. County Roads 44 and 44A are not City infrastructure and do not currently have a sidewalk system. Interconnectivity to existing and future uses will be a challenge.

- d. Water and Energy Conservation:
Promotes the conservation of water and energy.

The development of the site must meet City development and Florida Building Code standards, which will require energy and water-efficient appliances.

- e. Agricultural Preservation:
Preserves agricultural areas and activities, including silviculture, and dormant, unique, and prime farmlands and soils.

Not applicable. The site is within an existing developed/developing area.

- f. Open Space:
Preserves open space and natural lands and provides for public open space and recreation needs.

This is not applicable. The site does not provide functional open space or natural areas.

- g. Balance of Land Uses:
Creates a balance of land uses based upon the demands of the residential population for the nonresidential needs of an area.

The proposed land use would allow for additional commercial opportunities to serve existing residential development and capture market for through-commuters.

- h. Urban Form Densities and Intensities:
Provides uses, densities, and intensities of use and urban form that would remediate an existing or planned development pattern in the vicinity that constitutes sprawl or if it provides for an innovative development pattern such as transit-oriented developments or new towns as defined in s. [163.3164](#).

Not applicable.

In Accordance with the Comprehensive Plan Future Land Use Element Appendix:

All applications for a Plan amendment relating to the development patterns described and supported within the Plan including, but not limited to, site specific applications for changes in land use designations, are presumed to involve a legislative function of local government which, if approved, would be by legislative act of the City and shall, therefore, be evaluated based upon the numerous generally acceptable planning, timing, compatibility, and public facility considerations detailed or inferred in the policies of the Plan. Each application for an amendment to the Map #1: 2035 Future Land Use Map by changing the land use designation assigned to a parcel of property shall also be reviewed to determine and assess any significant impacts to the policy structure on the Comprehensive Plan of the proposed amendment including, but not limited to, the effect of the land use change on either the internal consistency or fiscal structure of the Plan.

Major Categories of Plan Policies:

This Plan amendment application review and evaluation process will be prepared and presented in a format consistent with the major categories of Plan policies as follows:

1. General Public Facilities/Services:

Since the Plan policies address the continuance, expansion and initiation of new government service and facility programs, including, but not limited to, capital facility construction, each application for a land use designation amendment shall include a description and evaluation of any Plan programs (such as the effect on the timing/financing of these programs) that will be affected by the amendment if approved. This analysis shall include the availability of, and actual and anticipated demand on, facilities and services serving or proposed to serve the subject property. The facilities and services required for analysis include emergency services, parks and recreation, potable water, public transportation if and when available, sanitary sewer, schools, solid waste, stormwater, and the transportation network.

- a. Emergency Services Analysis:
Eustis emergency services already provide emergency response to other properties in the area. Any development consistent with the GC future land use designation would not have a significant negative impact on the operations of Eustis emergency services.
- b. Parks & Recreation:
In 2010, the City prepared a Park Inventory and Level of Service Demand and Capacity analysis as part of the Comprehensive Plan Evaluation and Appraisal Report. The results show that a surplus of park area exists up to and beyond the City's population of 20,015. The current population is 24,500. Pursuant to comprehensive plan policy and Land Development Regulation, residential development will be required to provide on-site park amenities.
- c. Potable Water & Sanitary Sewer:
Water and sewer are available to the subject property. Both the water and sewer systems have adequate capacity to serve the development of the property.
- d. Schools:
The proposed change should not negatively impact schools. At the time of development application verification of capacity will be required from Lake County Schools.
- e. Solid Waste:
The City contracts with Waste Management for the hauling of solid waste. The company already services properties in the general area of the subject property. Serving this property will increase efficiency in the delivery of services.
- f. Stormwater:
The Comprehensive Plan and Land Development Regulations include the level of service standards to which new development must adhere. Projects designed to meet these standards will not negatively affect the existing facilities and services.
- g. Transportation Network Analysis:
This potential added Commercial development will be evaluated at the time a development plan is submitted. At this time, the adjacent transportation network (CR 44/CR 44A) has the capacity to serve the proposed GC land use. Future improvements will depend on the ultimate buildout intensity and specific commercial uses. Prior to the development of the property, site plan approval amongst other approvals

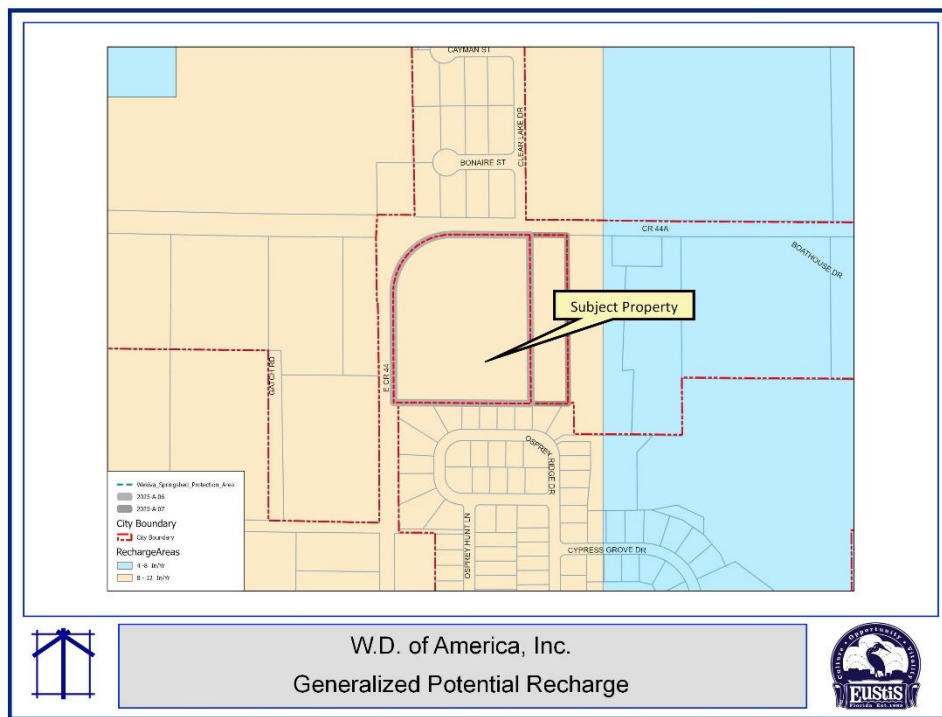
will be required. As part of the site plan review, a traffic study will be required to evaluate traffic impacts.

2. Natural Resources/Natural Features:

The policies of the Plan also contain general regulatory guidelines and requirements for managing growth and protecting the environment. These guidelines will be used to evaluate the overall consistency of the land use amendment with the Comprehensive Plan. Specifically, each amendment will be evaluated to 1) determine the existence of groundwater recharge areas; 2) the existence of any historical or archaeological sites; 3) the location of flood zones and the demonstration that the land uses proposed in flood-prone areas are suitable to the continued natural functioning of flood plains; and 4) the suitability of the soil and topography to the development proposed.

a. Groundwater recharge areas:

The site may be within a high recharge area; a site-specific geotechnical and hydrologic study will be needed to determine the site-specific impact at the time of development. Source: Lake County Comprehensive Plan 2030 Floridian Aquifer Recharge Map.

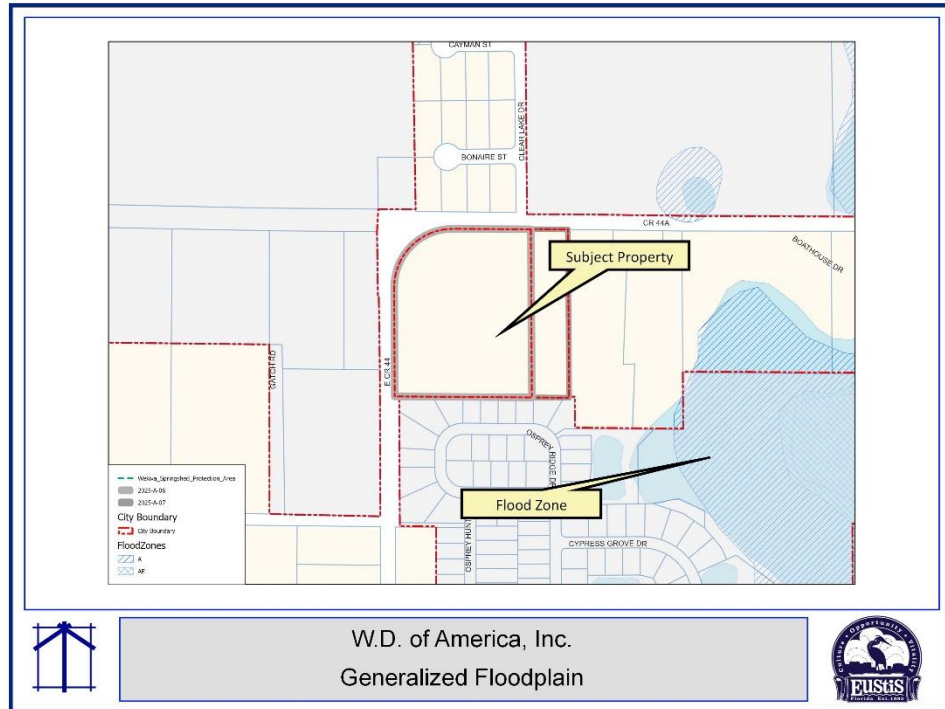


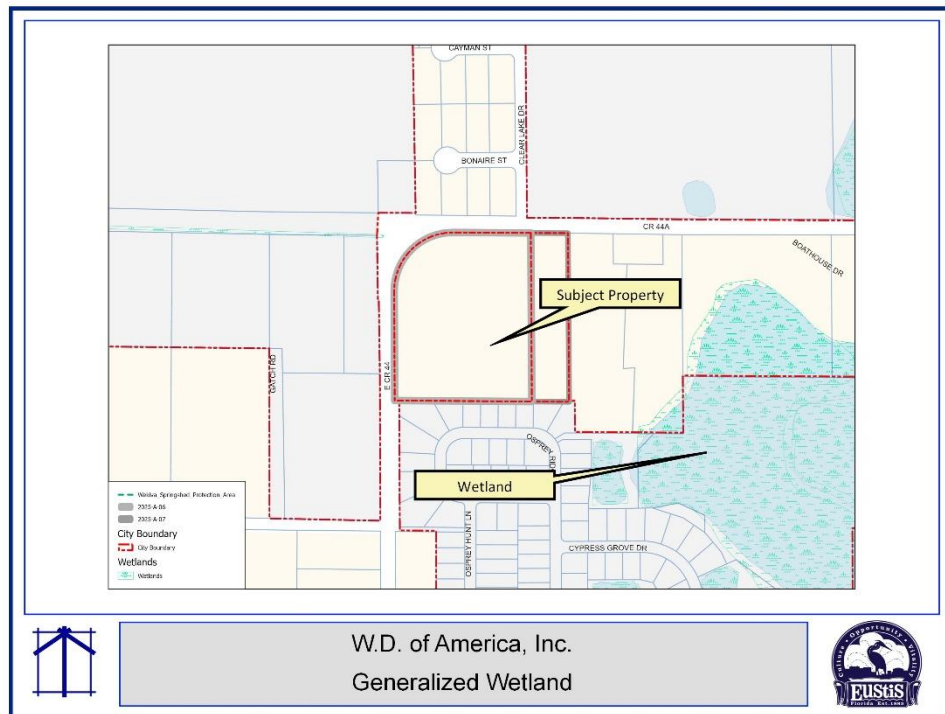
b. Historical or archaeological sites:

The City does not have any record of Florida Master Site Files related to this property, and no known historical or cultural resources exist.

c.Flood zones:

The subject property is not impacted by a 100-year flood zone area. Source - Lake County GIS - 2012 Flood Zones. Development of the property poses no wetland impacts, as no wetlands exist on the property.

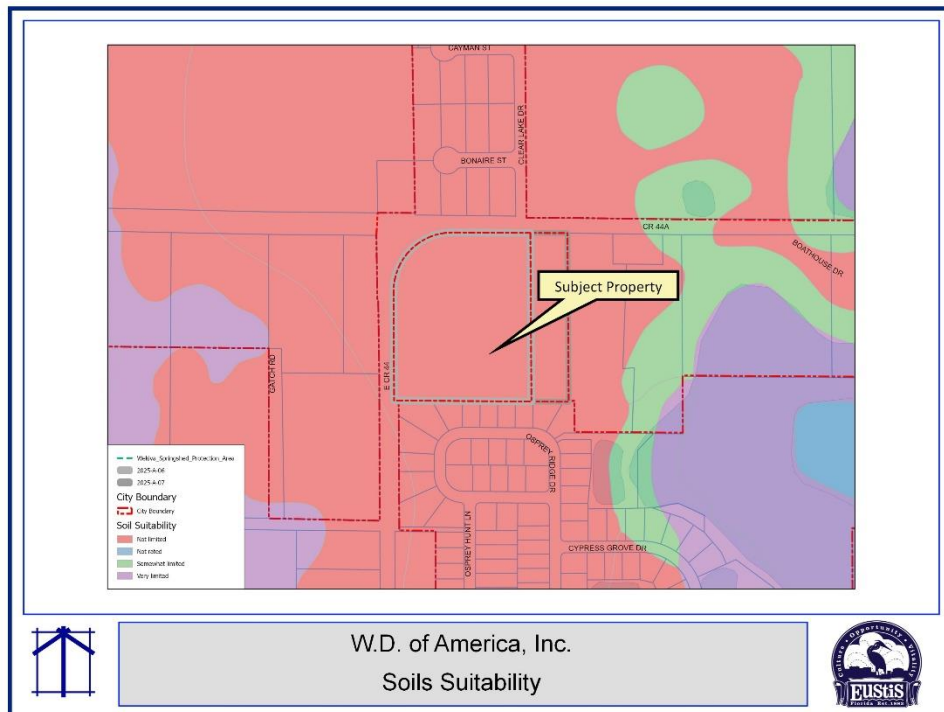




d. *Soil and topography:*

The soils appear to pose no limitations for development. At the development application stage, soils and geotechnical reports will be required as part of the application packages as well as for permitting for development with the applicable state agencies.

As site plan and building permit approval must be obtained before development can begin, the Comprehensive Plan and the Land Development Regulations include standards for the protection of environmentally sensitive lands that would apply should conditions at the time of development warrant such protection.



3. Comprehensive Plan Review:

Additional criteria and standards are also included in the Plan that describe when, where and how development is to occur. Plan development policies will be used to evaluate the appropriateness of the compatibility of the use, intensity, location, and timing of the proposed amendment.

Existing Land Use According to the Lake County Comprehensive Plan:

Policy I-1.3.2 Urban Low Density Future Land Use Category

The Urban Low Density Future Land Use Category provides for a range of residential development at a maximum density of four (4) dwelling units per net buildable acre in addition to civic, institutional, commercial, and office uses at an appropriate scale and intensity to serve this category. Limited light industrial uses may only be allowed as a conditional use. This category shall be located on or in proximity to collector or arterial roadways to minimize traffic on local streets and provide convenient access to transit facilities. Within this category any residential development in excess of 10 dwelling units shall be required to provide a minimum 25% of the net buildable area of the entire site as common open space.

The maximum intensity in this category shall be 0.25, except for institutional uses which shall be 0.35. The maximum Impervious Surface Ratio shall be 0.60.

TYPICAL USES INCLUDE:

- Residential;
- Nursing and personal care facilities;• Civic uses;
- Residential professional offices;
- Passive parks;
- Religious organizations;
- Day care services;
- Schools;
- Commerce uses, including: services, retail trade, finance, insurance and real estate as allowed pursuant to Policy I-1.3.10 Commercial Activities within the Urban Future Land Use Series (*... Lake County shall allocate sufficient land area to accommodate commercial activities that provide goods and services, with consideration to economic benefits and environmental impacts to the County. For the purposes of this Objective, the term —Commercial shall include commercial, retail, office, limited light industrial uses, and other uses commonly associated with these activities. The location and distribution of commercial land uses within Lake County shall be guided by information contained in the Data Inventory and Analysis for the Future Land Use and Economic Elements. The policies below shall apply to commercial development within the Urban Future Land Use Series.*); and
- Public order and safety.

Proposed Land Use According to the Eustis Comprehensive Plan:

General Commercial

(GC)

The GC designation is intended to provide an area consisting of primarily free-standing commercial land uses serving both motorists and local residents.

General Range of Uses: General Commercial may include a variety of free-standing retail and service uses and small strip centers including automotive-oriented uses such as service stations and auto sales as well as outdoor recreation, and schools. Public and utility services and facilities that are 5 acres or less in size are also permitted.

Intensity Range: up to 2.5 FAR subject to restrictions in Section 109-3 of the Land

Development Regulations.

Developments within the Wekiva Protection Overlay that include longleaf pine, sandhill, sand pine, and xeric oak communities shall protect these areas as dedicated open space or conservation easements, with total open space equal to at least 35% of the net buildable area.

Comparison of Lake County Development Conditions

The existing Lake County future land use designation of the property is Urban Low, which provides for a range of residential development in addition to civic, commercial and office uses at an appropriate scale and intensity to serve this category. Allowable density and intensity in Urban Low is a maximum of 4 dwelling units per acre and intensity of 0.25 to 0.35 floor area ratio, with the sum of residential density and non-residential intensity not exceeding 100%.

Residential: Lake County limits residential development to 4 du/acre and other Lake County Comprehensive Plan policies would all for some commercial, while the City of Eustis GC (General Commercial) would allow for a greater variety of commercial uses while limiting residential options.

Proposed Residential Land Uses.

The City shall limit these uses adjacent to incompatible commercial or industrial lands unless sufficient mitigation, such as buffering and setbacks, is provided and available, which lessens the impact on the proposed residences.

Not applicable.

Proposed Non-Residential Land Uses.

The City shall generally not permit new industrial uses to be located adjacent to existing or planned residentially designated areas.

The proposed future land use does not allow for industrial-type uses that may be incompatible with existing residential uses. Through the site development process, each project is evaluated, and the appropriate land development regulations are applied to mitigate potential incompatibility.

1. Transportation:

Each application for a land use designation amendment will be required to demonstrate consistency with the Transportation Element of the adopted Comprehensive Plan.

This potential added commercial development will be evaluated at the time a development plan is submitted. At this time, the adjacent transportation network (CR 44/CR 44A) has the capacity to serve the proposed GC land use. Future improvements will depend on the ultimate buildout intensity and specific commercial uses. Prior to the development of the property, site plan approval

amongst other approvals will be required. As part of the site plan review, a traffic study will be required to evaluate traffic impacts.

2. Water Supply:

Each application for a land use designation amendment will be required to demonstrate that adequate water supplies and associated public facilities are (or will be) available to meet the projected growth demands.

City water service and other services are available. The City's adopted Water Supply Plan anticipated additional growth consistent with this development, so both supply and capacity are available.

In Accordance with Chapter 102-16(f), Land Development Regulations

Standards for Review:

In reviewing the application of a proposed amendment to the comprehensive plan, the local planning agency and the city commission shall consider:

a. *Consistent with Comprehensive Plan:*

Whether the proposed amendment is consistent with all expressed policies the comprehensive plan.

The proposed amendment is consistent with the Comprehensive Plan.

b. *In Conflict with Land Development Regulations:*

Whether the proposed amendment is in conflict with any applicable provisions of these land development regulations.

The proposed amendment is not in conflict with the Land Development Regulations. At the time of development, there will be further review for compliance.

c. *Inconsistent with Surrounding Uses:*

Whether, and the extent to which, the proposed amendment is inconsistent with existing and proposed land uses.

City commercial future land use has been designated for the west side of the CR 44/44A intersection. The General Commercial FLU would not be inconsistent for the area.

d. *Changed Conditions:*

Whether there have been changed conditions that justify an amendment.

The applicant wishes to annex the property into the City limits of Eustis. Assignment of a City of Eustis future land use designation is required. Upon annexation, the subject property will have a full array of municipal services, including central water. These changed conditions warrant a change in the land use designation.

e. *Demand on Public Facilities:*

Whether, and the extent to which, the proposed amendment would result in demands on public facilities, and whether, or to the extent to which, the proposed amendment would exceed the capacity of such public facilities, infrastructure and services, including, but not limited to police, roads, sewage facilities, water supply, drainage, solid waste, parks and recreation, schools, and fire and emergency medical facilities.

City water and sewer services are available and, in close proximity to the site. Adequate capacity is available to serve future development consistent with the requested future land use designation.

Upon annexation, the City will also provide other services such as fire and police protection, library services, parks, and recreation. The City provides these services to other properties in the area, so efficiency will improve.

f. *Impact on Environment:*

Whether, and the extent to which, the proposed amendment would result in significant impacts on the natural environment.

The site contains no apparent natural resources and is not connected to significant open space.

g. *Orderly Development Pattern:*

Whether, and the extent to which, the proposed amendment would result in an orderly and logical development pattern, specifically identifying any negative effects on such pattern.

The site is contiguous to the City limits. The annexation would create a logical development pattern as it extends the City limits to a more natural boundary in this area.

h. Public Interest and Intent of Regulations:

Whether the proposed amendment would be consistent with or advance the public interest, and in harmony with the purpose and intent of these land development regulations.

The purpose and intent of the Land Development Regulations is as follows:

“The general purpose of this Code is to establish procedures and standards for the development of land within the corporate boundaries and the planning area of the city, such procedures and standards being formulated in an effort to promote the public health, safety and welfare and enforce and implement the city's comprehensive plan, while permitting the orderly growth and development with the city and Eustis planning area consistent with its small-town community character and lifestyle.”

The requested designation of GC land use will provide for orderly growth and development. This designation would advance the public interest by potentially providing additional commercial options, and the application of the LDRs to future development will ensure consistency with the community character and lifestyle of the city.

i. Other Matters:

Any other matters that may be deemed appropriate by the local planning agency or the city commissioners, in review and consideration of the proposed amendment.

No other matters.

Analysis of Design District Request (Ordinance Number 26-08):

Form-Based Code:

The City's Land Development Regulations are a form-based code. Design districts are unique to form-based codes. Lake County still uses traditional Euclidean zoning, so there are no design districts for parcels in unincorporated Lake County. When a parcel annexes into the City of Eustis, the City must assign a consistent design district that follows the urban, suburban and rural transect

1. Standards for Review:

The Land Development Regulations include the following standards for review of an amendment to the Design District Map. In approving a change in the designation, the City Commission shall consider: Whether the amendment is in conflict with any applicable provisions of the Code.

a. Section 102-17(a) "...Section 109-3 Design Districts:

identifies the definition, structure, and form of each design district. The assignment of design district must follow the district pattern and intent."

The requested amendment assigns a newly annexed parcel a designation that meets the district pattern and intent (Suburban Corridor). The Suburban development pattern and intent, and the Suburban Corridor definition, structure and form description are stated below. The assignment of a Suburban Corridor design district designation is appropriate due to the established and proposed development patterns in the area.

b. Sec. 109-3.4. Suburban development pattern intent statements:

Intent. Suburban development pattern...relies primarily on a pattern of residential development that provides the majority of property owners with substantial yards

on their own property. The street layout, comprised of streets with fewer vehicular connections, helps to reduce cut-through traffic and establishes distinct boundaries for residential communities/subdivisions. Each land use provides for pedestrian and bicycle connections.

Design districts – Suburban center.

- a. *Definition. Mix of commercial, office, and potentially multifamily residential uses.*
- b. *Structure. Development blocks organized with streets, pedestrian walkways and driveways.*
- c. *Form. Mix of nonresidential uses from office to commercial with supportive uses adjacent to larger use types.*

A Suburban Corridor designation follows the district pattern and intent outlined in the Land Development Regulations and is consistent with the existing transect in the area.

c. Section 102-17(a)

The following guidelines must be followed when proposing the reassignment of design district:

Compatible intensities should face across streets. Changes in design districts should occur along rear alleys or lanes or along conservation edges.

Reassignment is not being proposed. A Eustis design district designation must be assigned to annexed property. The proposed design district is compatible with the surrounding design districts.

d. Consistent with Comprehensive Plan:

Whether the proposed amendment is consistent with all elements of the comprehensive plan.

The requested amendment is consistent with the Comprehensive Plan.

e. Consistent with Surrounding Uses:

Whether, and the extent to which, the proposed design district is consistent with existing and proposed land uses.

The Suburban Corridor definition, structure and form are compatible with the existing uses and any proposed uses permitted under the General Commercial and Suburban Residential future land use designations in the area.

f. Changed Conditions:

Whether there have been changed conditions that justify amending the design district.

The subject property is proposed for annexation, and a design district assignment is necessary. The conditions have changed from land

located in unincorporated Lake County without central services to a site within the City of Eustis with municipal services.

g. Public Facilities.

Whether, and the extent to which, the proposed redistricting would result in demands on public facilities, and whether, or to the extent to which, the proposed change would exceed the capacity of such public facilities, including, but not limited to police, roads, sewage facilities, water supply, drainage, solid waste, parks and recreation, schools, and fire and emergency medical facilities.

A redistricting is not proposed. Assigning a design district to an annexation property will not change the demand impact on public facilities. The Future Land Use designation controls the density and intensity permitted on the site, so the Design District map amendment would not result in impacts beyond that already anticipated. Also, see the analysis of public facilities in the above sections of this report.

h. Impact on Environment:

Whether, and the extent to which, the redistricting would result in significant impacts on the natural environment.

The proposed Design District designation for this property does not change the development potential of the parcel. Design Districts control the form and function of any development that does occur. The Future Land Use designation controls the density, intensity, and minimum open space permitted on the site, so the Design District amendment would not result in additional impacts on the natural environment. As building permit approval must be obtained before development can begin, the Comprehensive Plan and the Land Development Regulations include standards for the protection of environmentally sensitive lands that would apply should conditions at the time of development warrant such protection.

i. Property Values:

Whether, and the extent to which, the proposed redistricting would affect the property values in the area.

Redistricting is not being proposed. A City of Eustis design district designation must be assigned to the annexed property. This request should not affect property values because the proposed Design District designation is consistent with the surrounding development patterns and design districts.

j. Orderly Development Pattern:

Whether, and the extent to which, the proposed redistricting would result in an orderly and logical development pattern.

The request is the assignment of a design district to an annexation parcel, not redistricting. However, the proposed Design District designation is consistent with the suburban development pattern identified in Section 109-5.5 of the Land Development Regulations. Assignment of the requested designation will result in a more orderly and logical development pattern; making the designation consistent with the surrounding area designations and established development patterns.

k. Public Interest and Intent of Regulations:

Whether the proposed redistricting would be in conflict with the public interest, and in harmony with the purpose and intent of these regulations.

The request is the assignment of a design district to an annexation parcel, not redistricting. The proposed Design District is not in conflict with the public interest and reflects the purpose and intent of the regulations.

l. Other Matters:

Any other matters that may be deemed appropriate by the city commission, in review and consideration of the proposed redistricting.

The request is the assignment of a design district to an annexation parcel, not redistricting. The City's Land Development Regulations are a form-based code. The Design District designations define the development form, but not the types of land use, densities, intensities, or required open space. The districts, therefore, must be consistent and follow the urban, suburban, and rural transects. This request assigns a Suburban Corridor design district designation to an annexation parcel, which is consistent with the existing transect.