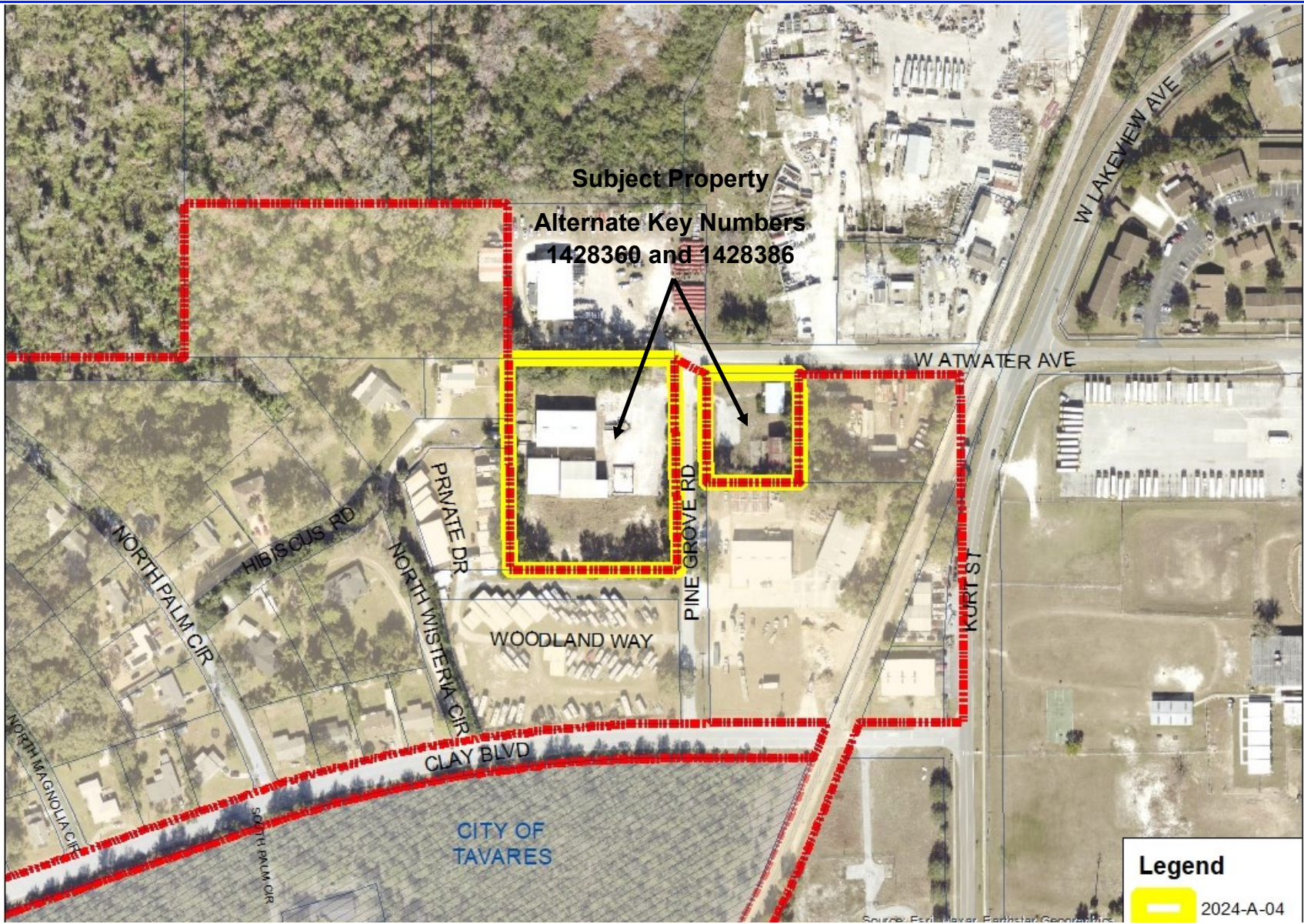


1436 Pine Grove RE, LLC (Chris Creech)
Aerial Location



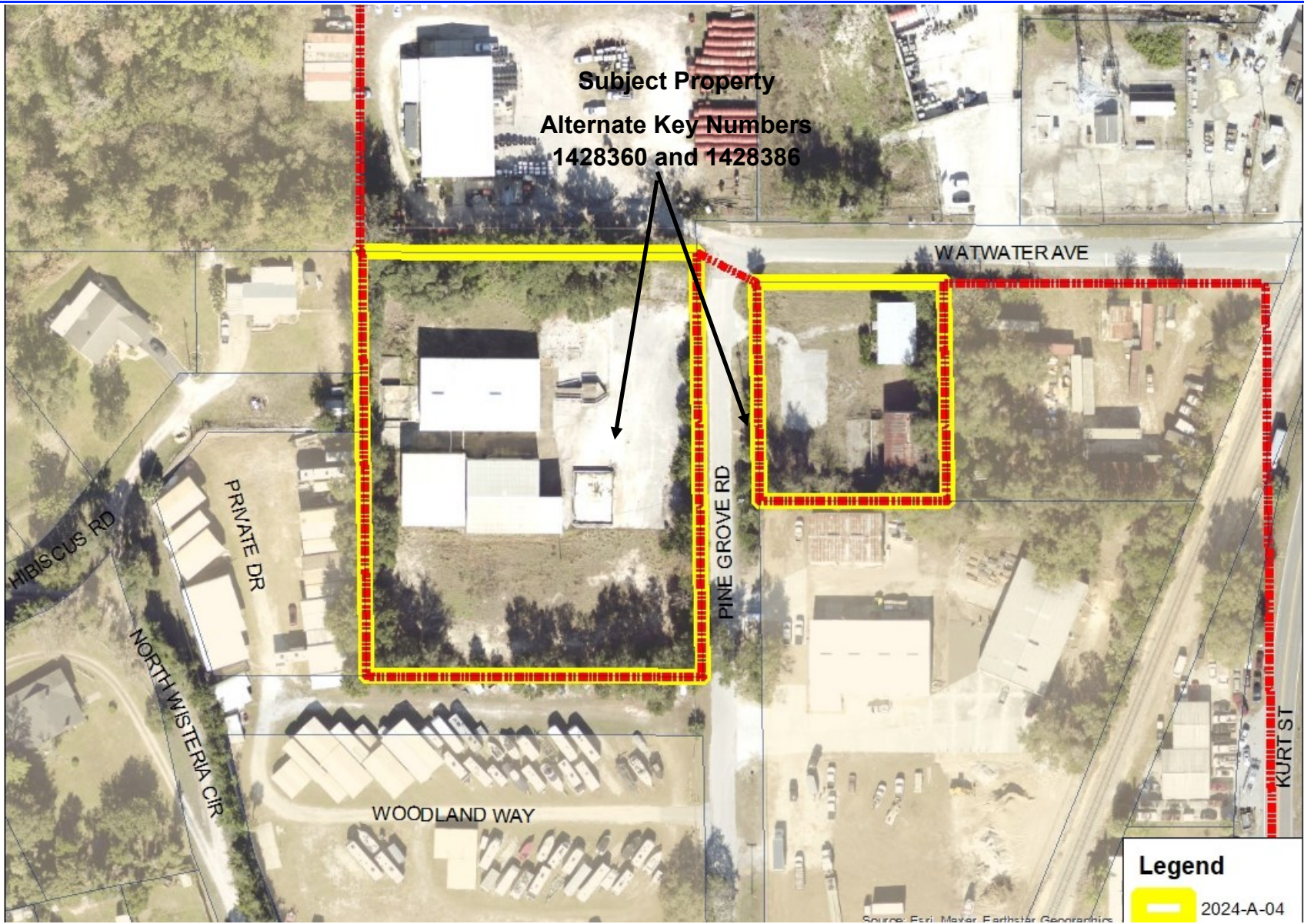


Legend
2024-A-04



1436 Pine Grove RE, LLC (Chris Creech)
Aerial Location





Subject Property
Alternate Key Numbers
1428360 and 1428386

WATWATER AVE

PINE GROVE RD

KURT ST

HIBISCUS RD

PRIVATE DR

NORTH WISTERIA CIR

WOODLAND WAY

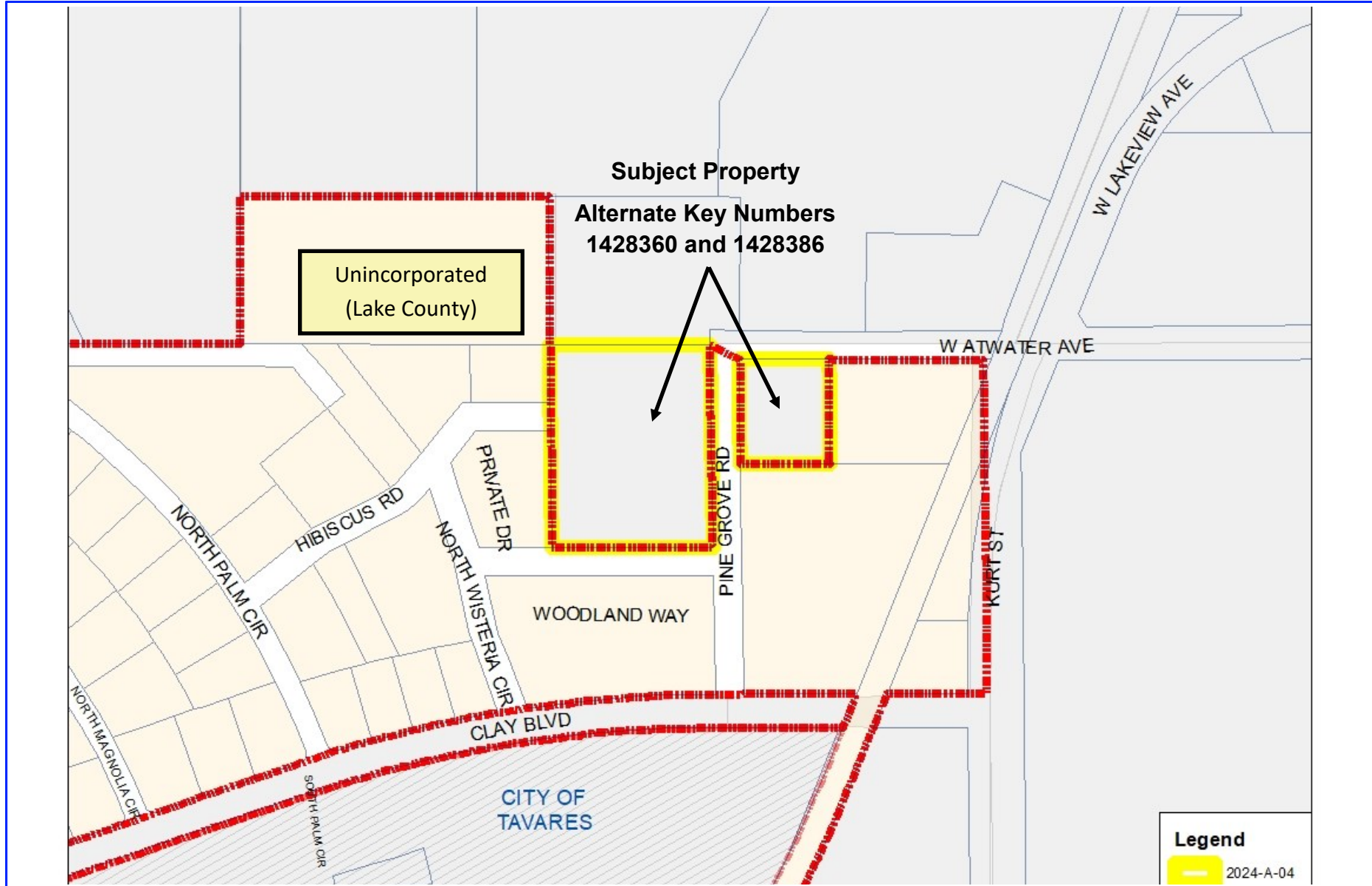
Legend

2024-A-04



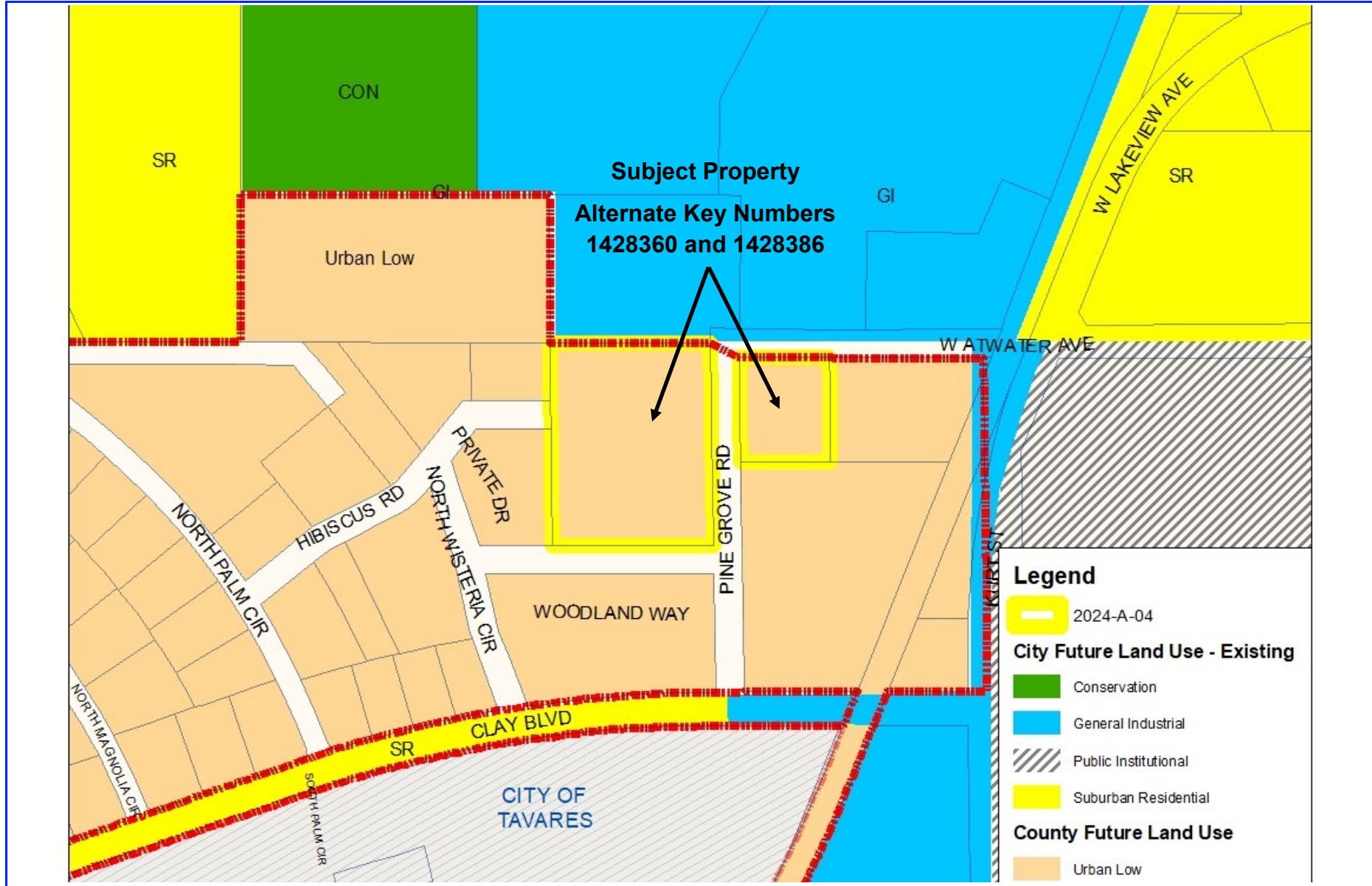
1436 Pine Grove RE, LLC (Chris Creech)
Aerial Location





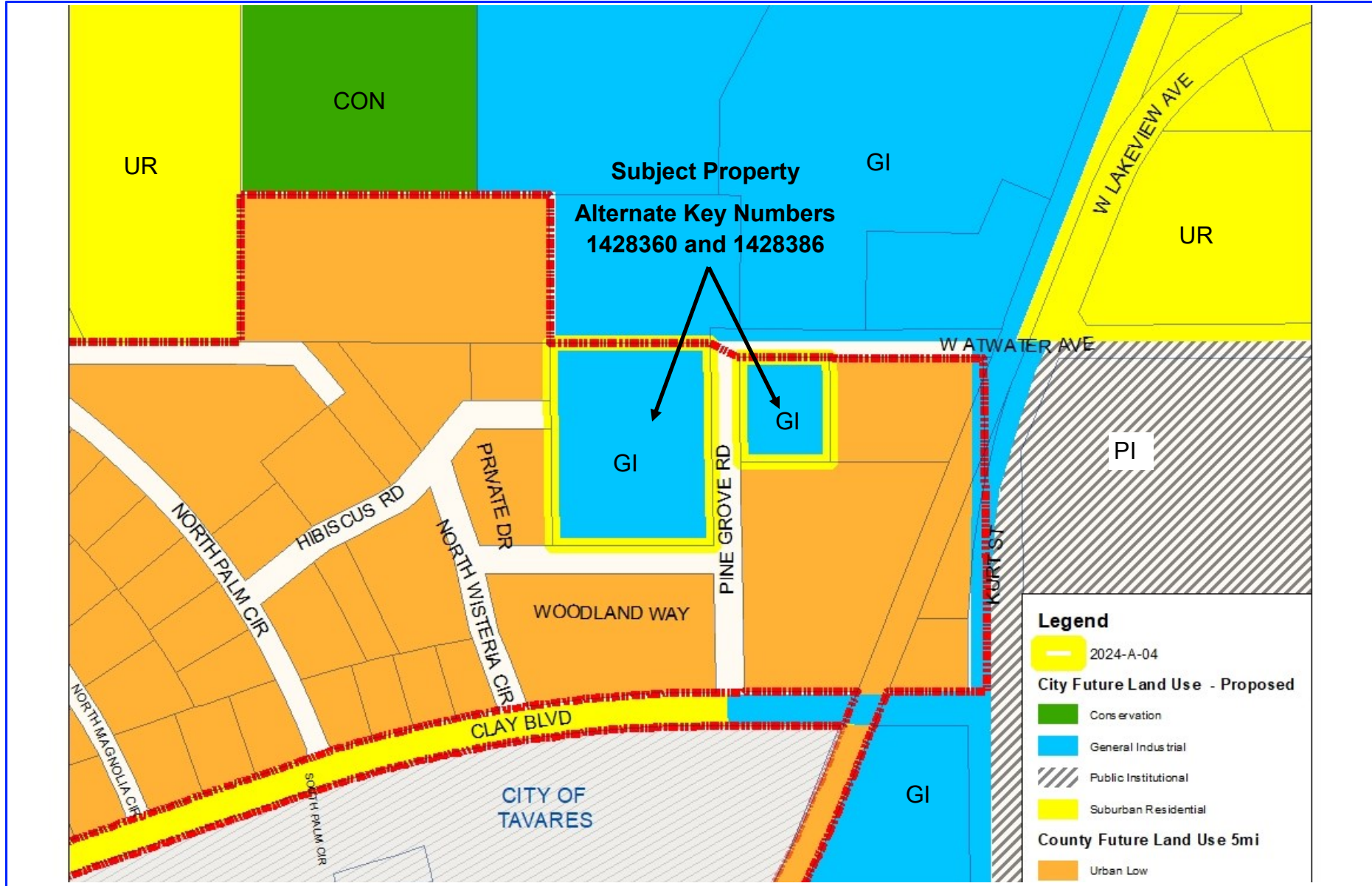
1436 Pine Grove RE, LLC (Chris Creech)
Location





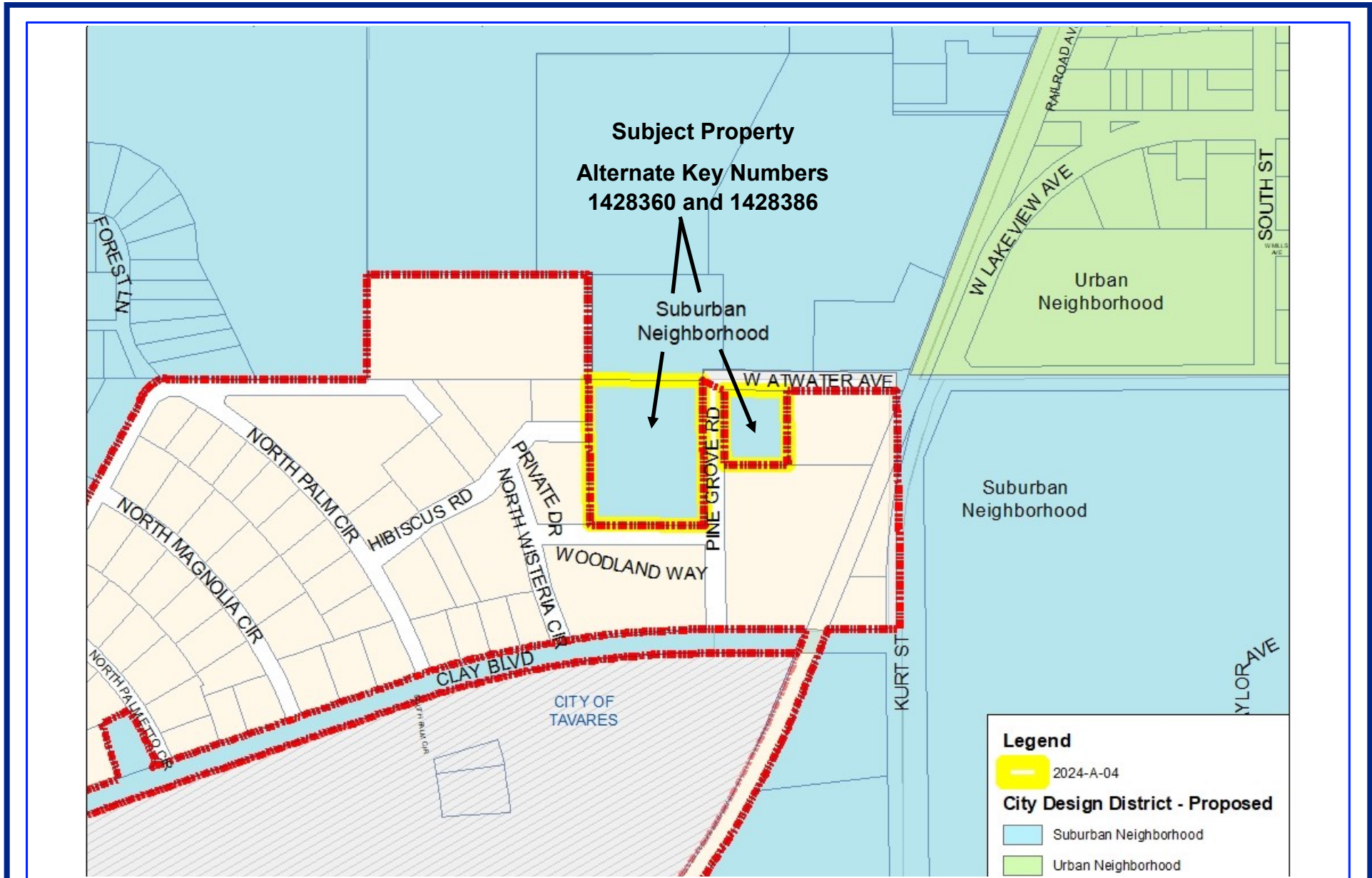
1436 Pine Grove RE, LLC (Chris Creech)
 Future Land Use (Current)





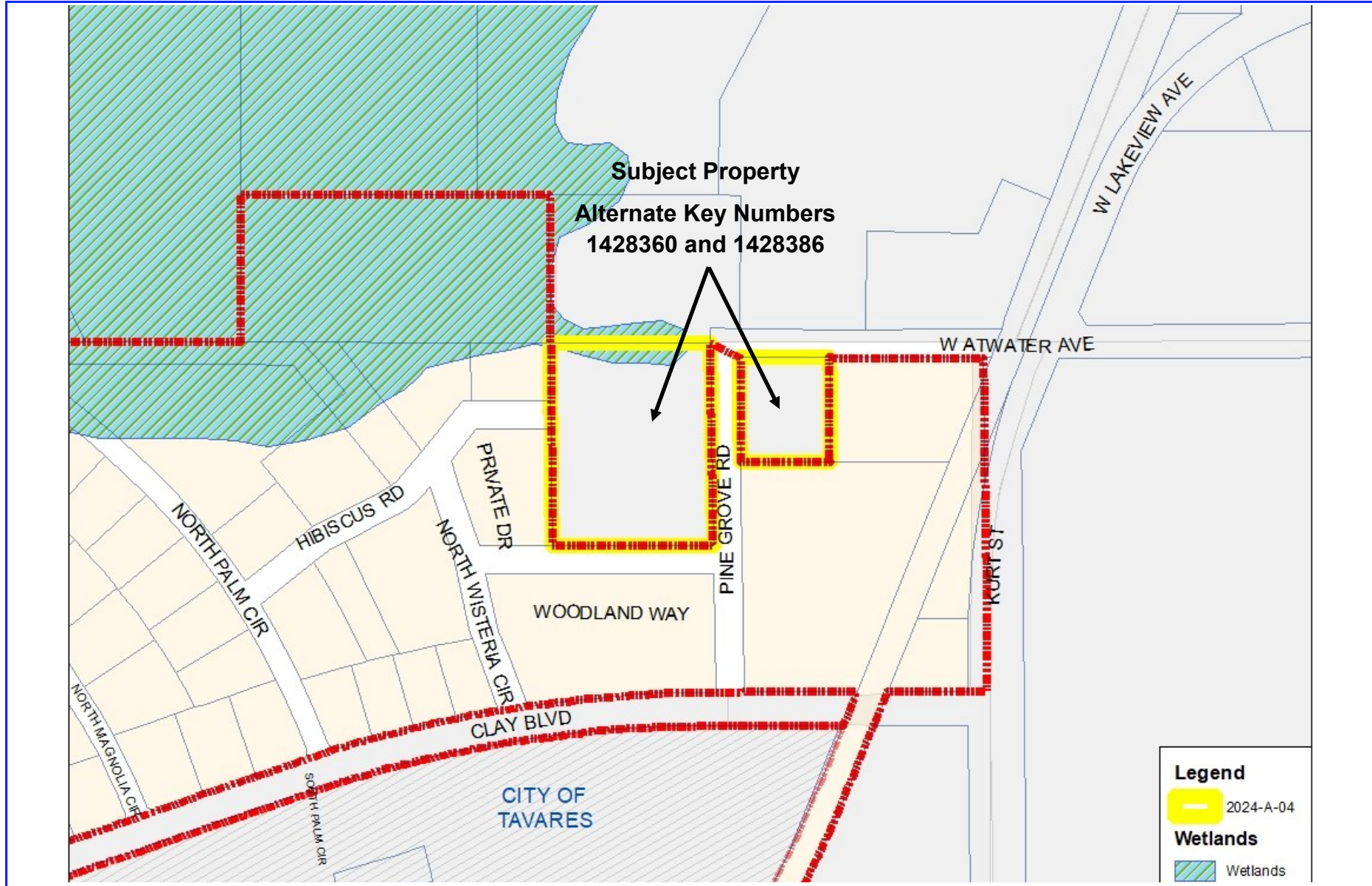
1436 Pine Grove RE, LLC (Chris Creech)
 Future Land Use (Proposed)





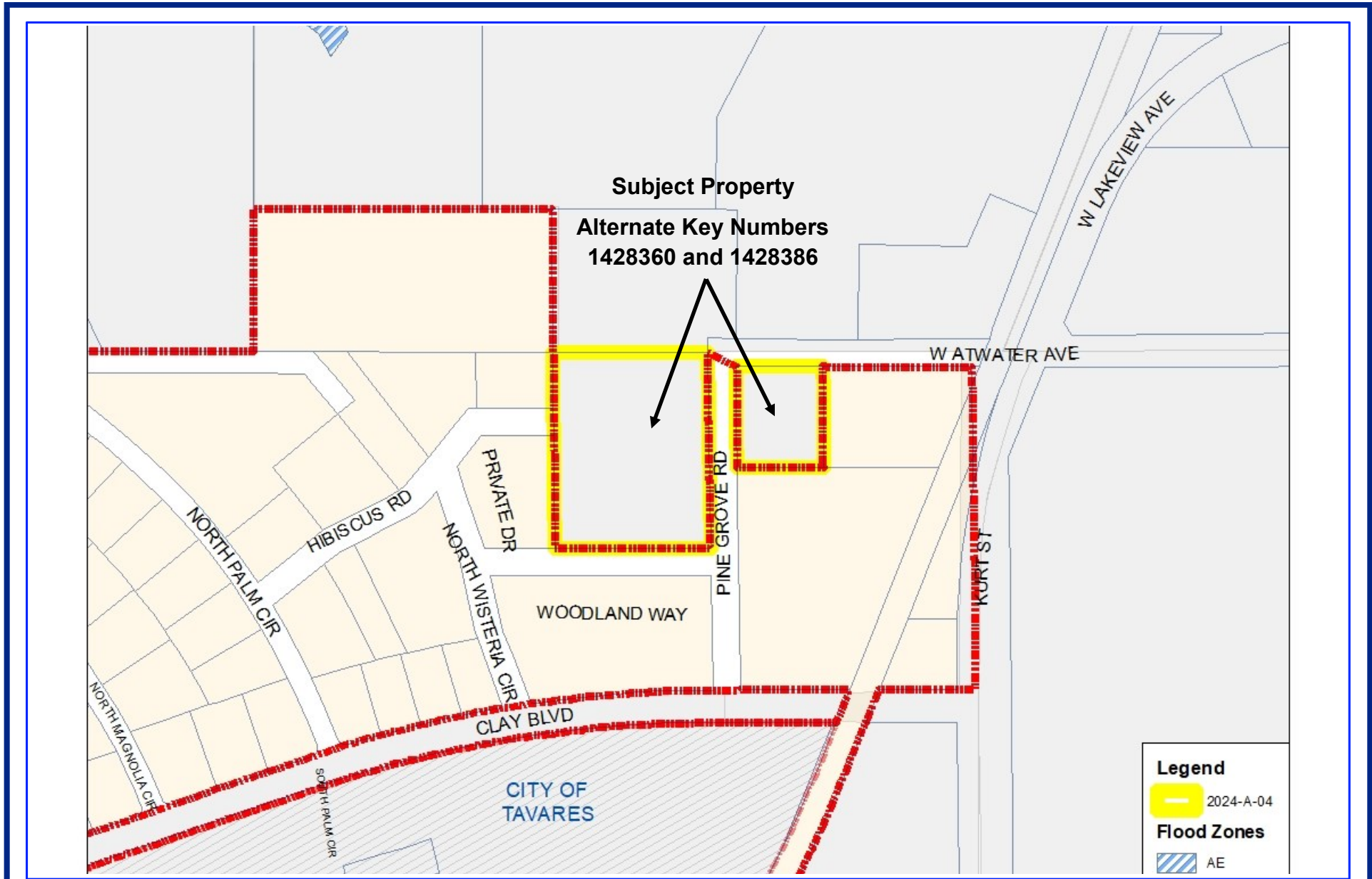
1436 Pine Grove RE, LLC (Chris Creech)
 Design District (After)





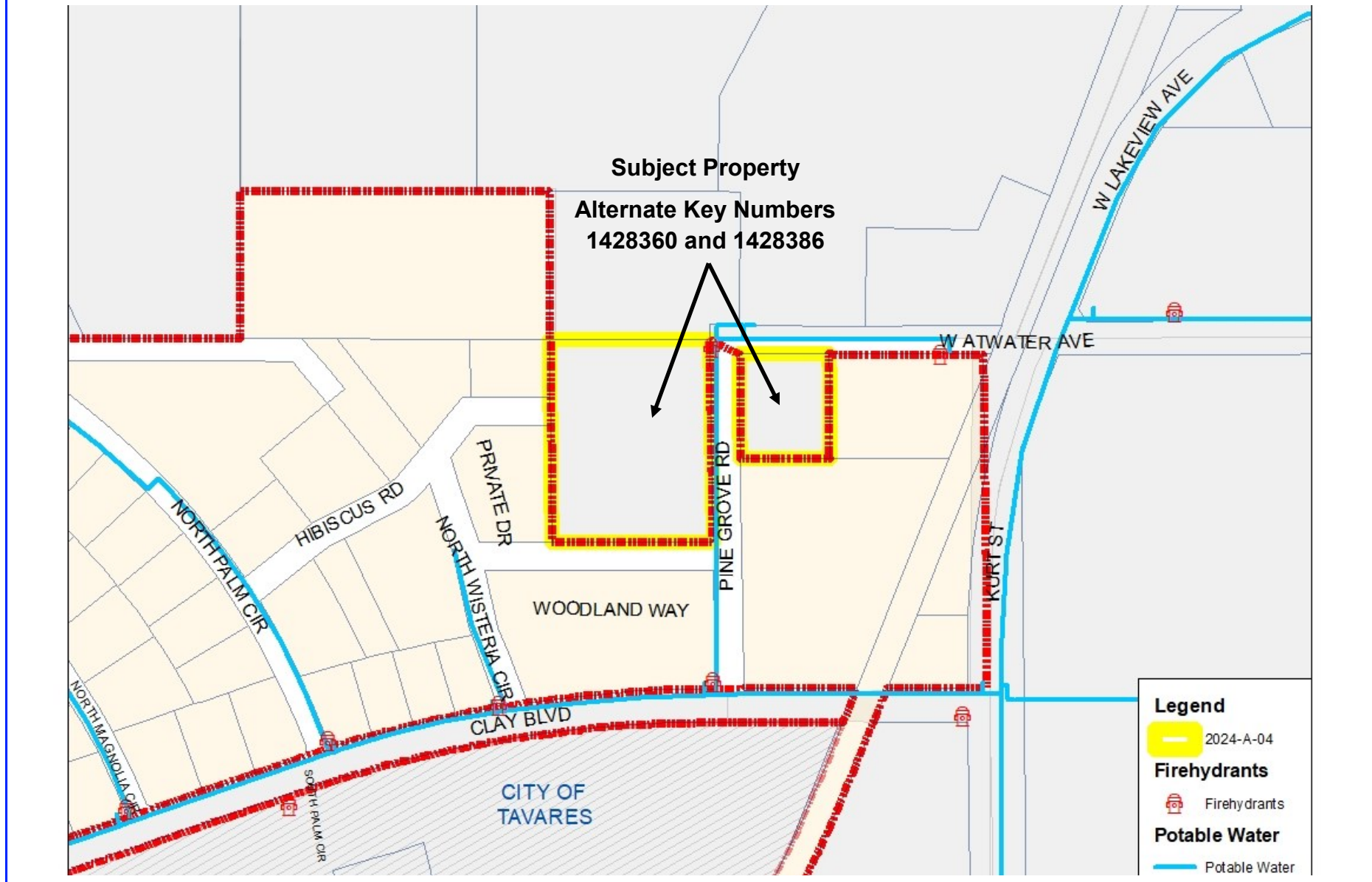
1436 Pine Grove RE, LLC (Chris Creech)
 Wetland Map





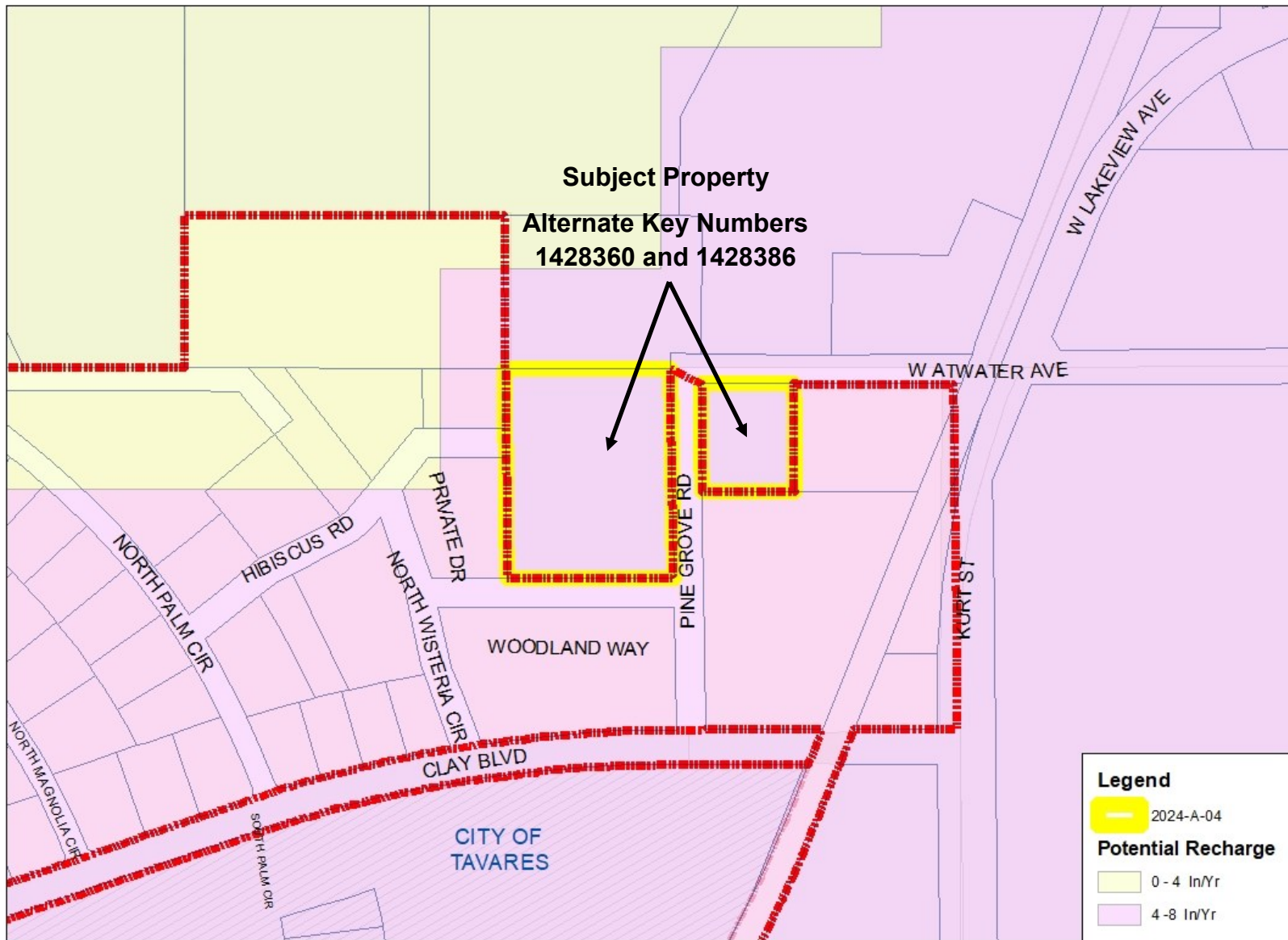
1436 Pine Grove RE, LLC (Chris Creech)
 Flood Zone





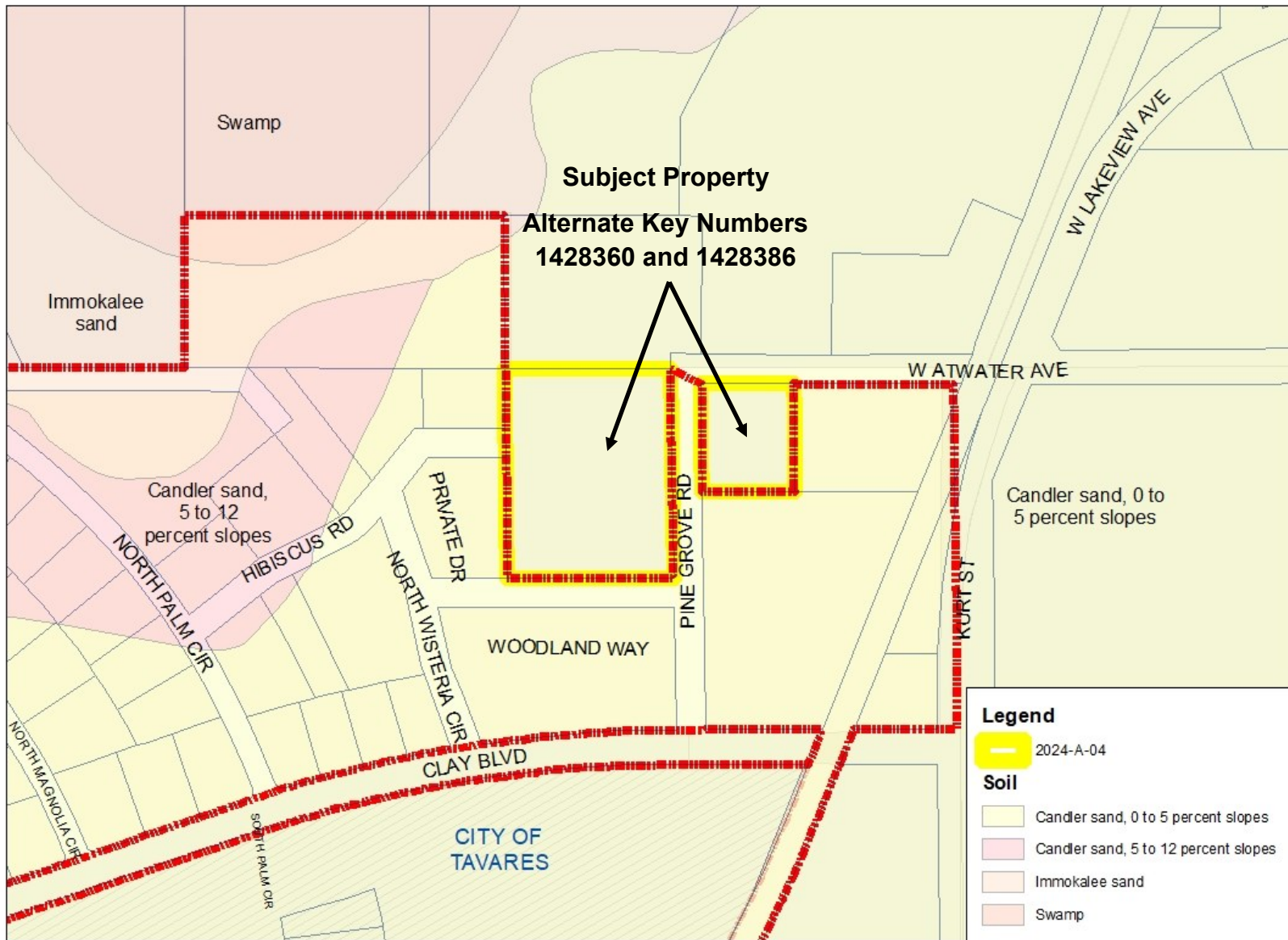
1436 Pine Grove RE, LLC (Chris Creech)
 Utilities





1436 Pine Grove RE, LLC (Chris Creech)
 Potential Recharge





1436 Pine Grove RE, LLC (Chris Creech)
 USGS Soils Survey Map

